

Table 1 - Seep Well Field (SWF) Operational Metrics

Nevada Environmental Response Trust Groundwater Extraction and Treatment System Enhanced Operational Metrics																			
Date	LS #1 Flow (gpm)	PC-116R (East Well)		PC-99R2/R3 (Center Well)		PC-115R (West Well)		PC-117		PC-118		PC-119		PC-120		PC-121		PC-133	
		Flow (gpm)	Water Elevation (ft amsl)	Flow ³ (gpm)	Water Elevation (ft amsl)	Flow ⁴ (gpm)	Water Elevation (ft amsl)	Flow (gpm)	Water Elevation (ft amsl)	Flow (gpm)	Water Elevation (ft amsl)	Flow (gpm)	Water Elevation (ft amsl)	Flow (gpm)	Water Elevation (ft amsl)	Flow (gpm)	Water Elevation (ft amsl)	Flow (gpm)	Water Elevation ⁵ (ft amsl)
02/01/21	467	163	1536.34	93	1540.25	130	1542.34	108	1536.42	71	1546.76	102	1547.88	50	1549.03	20	1550.01	9.6	< 1520.00
02/02/21	466	163	1536.33	93	1540.22	130	1542.35	108	1536.42	71	1546.76	102	1547.89	50	1549.03	20	1550.01	9.6	1536.22
02/03/21	462	163	1536.34	93	1540.19	128	1542.51	108	1536.42	71	1546.79	102	1547.90	50	1549.04	20	1550.02	9.6	1555.00
02/04/21	470	163	1536.32	93	1540.19	130	1542.55	108	1536.40	71	1546.77	102	1547.88	50	1549.03	20	1550.00	9.6	1555.00
02/05/21	465	163	1536.33	93	1540.17	130	1542.56	108	1536.40	71	1546.79	102	1547.89	50	1549.04	20	1550.02	9.6	1555.00
02/06/21	465	163	1536.33	93	1540.16	130	1542.56	108	1536.40	71	1546.80	102	1547.90	50	1549.04	20	1550.02	9.6	1555.00
02/07/21	465	163	1536.33	93	1540.13	130	1542.57	108	1536.40	71	1546.82	102	1547.91	50	1549.06	20	1550.03	9.6	1555.00
02/08/21	465	163	1536.33	93	1540.11	130	1542.58	108	1536.40	71	1546.83	102	1547.91	50	1549.06	20	1550.04	9.6	1555.00
02/09/21	469	162	1536.48	93	1540.11	129	1542.63	108	1536.50	71	1546.85	102	1547.92	50	1549.07	20	1550.04	9.6	1555.00
02/10/21	462	163	1536.49	93	1540.10	130	1542.59	108	1536.48	71	1546.85	102	1547.92	50	1549.06	20	1550.04	9.6	1533.34
02/11/21	463	163	1536.46	93	1540.10	130	1542.58	108	1536.46	71	1546.85	102	1547.91	50	1549.06	20	1550.03	9.6	< 1520.00
02/12/21	468	163	1536.44	93	1540.09	130	1542.59	108	1536.45	71	1546.86	102	1547.91	50	1549.06	20	1550.03	9.6	< 1520.00
02/13/21 ¹	463	162	1536.52	93	1540.07	130	1542.62	107	1536.53	71	1546.88	102	1547.93	50	1549.07	20	1550.04	9.5	1520.13
02/14/21	459	163	1536.46	93	1540.00	130	1542.58	108	1536.48	71	1546.85	102	1547.89	50	1549.03	20	1550.01	9.6	< 1520.00
02/15/21	461	163	1536.44	93	1539.96	130	1542.57	108	1536.46	71	1546.85	102	1547.88	50	1549.02	20	1550.00	9.6	< 1520.00
02/16/21	472	163	1536.41	93	1539.94	130	1542.56	108	1536.44	71	1546.85	102	1547.87	50	1549.01	20	1549.99	9.6	< 1520.00
02/17/21	463	163	1536.38	93	1539.94	130	1542.54	108	1536.40	71	1546.84	102	1547.85	50	1548.99	20	1549.96	9.6	< 1520.00
02/18/21	459	163	1536.37	93	1539.95	130	1542.52	108	1536.38	71	1546.83	102	1547.83	50	1548.97	20	1549.94	9.6	< 1520.00
02/19/21	458	163	1536.37	93	1539.93	130	1542.52	108	1536.37	71	1546.83	102	1547.83	50	1548.97	20	1549.94	9.6	< 1520.00
02/20/21	458	163	1536.34	93	1539.87	130	1542.51	108	1536.36	71	1546.83	102	1547.82	50	1548.96	20	1549.94	9.6	< 1520.00
02/21/21	458	163	1536.31	93	1539.91	130	1542.49	108	1536.33	71	1546.82	102	1547.80	50	1548.93	20	1549.91	9.6	< 1520.00
02/22/21	457	163	1536.30	93	1539.89	130	1542.49	108	1536.32	71	1546.82	102	1547.79	50	1548.93	20	1549.91	9.6	< 1520.00
02/23/21	466	163	1536.29	93	1539.83	130	1542.49	108	1536.31	71	1546.83	102	1547.79	50	1548.93	20	1549.90	9.6	< 1520.00
02/24/21	462	163	1536.26	93	1539.82	130	1542.48	108	1536.29	71	1546.82	102	1547.78	50	1548.91	20	1549.89	9.6	< 1520.00
02/25/21	464	163	1536.25	93	1539.83	130	1542.46	108	1536.28	71	1546.82	102	1547.76	50	1548.90	20	1549.87	9.6	< 1520.00
02/26/21	462	163	1536.25	93	1539.81	130	1542.47	108	1536.28	71	1546.82	102	1547.77	50	1548.90	20	1549.87	9.6	< 1520.00
02/27/21	471	163	1536.22	93	1539.81	130	1542.46	108	1536.26	71	1546.82	102	1547.75	50	1548.89	20	1549.86	9.6	< 1520.00
02/28/21	465	163	1536.26	79	1541.34	130	1542.47	108	1536.27	71	1546.83	102	1547.76	50	1548.89	20	1549.86	9.6	< 1520.00
Monthly Average	464	163	1536.36	93	1540.06	130	1542.52	108	1536.39	71	1546.82	102	1547.85	50	1548.99	20	1549.97	9.6	1529.81
Analytical ¹		Conc (mg/L)	Date	Conc (mg/L)	Date	Conc (mg/L)	Date	Conc (mg/L)	Date	Conc (mg/L)	Date	Conc (mg/L)	Date	Conc (mg/L)	Date	Conc (mg/L)	Date	Conc (mg/L)	Date
Perchlorate		13	2/3/2021	9.7	2/3/2021	3.1	2/3/2021	8.7	2/3/2021	1.9	2/3/2021	0.22	2/3/2021	0.0034	2/3/2021	0.0012	2/3/2021	1.1	2/3/2021
Hexavalent Chromium		0.0033	2/3/2021	ND	2/3/2021	ND	2/3/2021	0.0042	2/3/2021	ND	2/3/2021	ND	2/3/2021	ND	2/3/2021	ND	2/3/2021	ND	2/3/2021
Total Chromium		0.0014	2/3/2021	ND	2/3/2021	ND	2/3/2021	0.0026	2/3/2021	ND	2/3/2021	0.0024	2/3/2021	ND	2/3/2021	ND	2/3/2021	ND	2/3/2021

Notes:
 Flow reported as gpm is a daily average calculated from the totalizer reading.
 ND = Not detected above laboratory method detection limit (Cr(TR)=2.5 ug/L, Cr(VI)=0.20 ug/L).
 J = Result is less than the reporting limit but greater than or equal to the method detection limit and the concentration is an approximate value.
 1: Analytical results are reported from Eurofins TestAmerica.
 2: On 02/13, LS #1 and SWF offline briefly due to maintenance
 3: On 02/28, PC-99R2/R3 offline due to maintenance until 03/01/21
 4: On 02/03, PC-115R offline briefly due to maintenance
 5: Duplicates taken on 02/03 for well PC-118; average of both values is presented and used for calculations.
 6: A "<" preceding the water elevation indicates the reported water level is below the transducer. Average monthly water elevation calculations include the transducer elevation in instances where the water level is below the transducer.

Nevada Environmental Response Trust Groundwater Extraction and Treatment System Enhanced Operational Metrics																	
Date	LS #3 Flow ² (gpm)	ART-1/1A		ART-2/2A		ART-3/3A		ART-4/4A		ART-9		ART-7A/7B		ART-8/8A		PC-150	
		Flow (gpm)	Water Elevation (ft amsl)	Flow ³ (gpm)	Water Elevation (ft amsl)	Flow ⁴ (gpm)	Water Elevation ⁷ (ft amsl)	Flow (gpm)	Water Elevation (ft amsl)	Flow (gpm)	Water Elevation (ft amsl)	Flow (gpm)	Water Elevation (ft amsl)	Flow ⁵ (gpm)	Water Elevation (ft amsl)	Flow ⁶ (gpm)	Water Elevation (ft amsl)
02/01/21	403	42	1583.73	152	1583.36	21	1583.83	3.5	1578.85	55	1577.53	19	1584.55	170	1583.25	1.5	1578.68
02/02/21	403	42	1583.72	152	1583.36	21	1583.85	3.5	1578.85	55	1577.50	19	1584.55	170	1583.24	1.5	1578.67
02/03/21	402	42	1583.72	152	1583.35	21	1583.87	3.5	1578.85	55	1577.63	19	1584.55	170	1583.24	1.5	1578.67
02/04/21	402	42	1583.70	152	1583.33	21	1583.89	3.4	1578.85	55	1577.70	19	1584.54	171	1583.23	1.5	1578.66
02/05/21	403	42	1583.69	152	1583.33	21	1583.92	3.4	1578.85	55	1577.68	19	1584.54	171	1583.22	1.5	1578.66
02/06/21	402	42	1583.68	152	1583.32	21	1583.95	3.4	1578.85	55	1577.68	19	1584.54	171	1583.21	1.5	1578.66
02/07/21	402	42	1583.68	152	1583.31	21	1583.96	3.4	1578.85	55	1577.67	19	1584.54	170	1583.21	1.5	1578.66
02/08/21	402	42	1583.67	152	1583.31	21	1583.99	3.4	1578.85	55	1577.67	19	1584.54	170	1583.20	1.5	1578.66
02/09/21	402	42	1583.66	152	1583.30	21	1584.04	3.4	1578.85	55	1577.66	19	1584.54	170	1583.20	1.5	1578.66
02/10/21	402	42	1583.65	152	1583.29	21	1584.09	3.4	1578.85	55	1577.65	19	1584.54	170	1583.19	1.5	1578.66
02/11/21	402	42	1583.65	152	1583.29	21	1584.17	3.4	1578.85	55	1577.66	19	1584.54	170	1583.19	1.5	1578.66
02/12/21	402	42	1583.65	152	1583.29	21	1584.22	3.4	1578.85	55	1577.66	19	1584.54	170	1583.19	1.5	1578.66
02/13/21	390	42	1583.60	146	1583.45	18	1580.76	3.4	1578.89	55	1577.67	19	1584.53	166	1583.12	1.5	1578.66
02/14/21	395	42	1583.72	152	1583.43	13	1576.16	3.5	1578.85	55	1577.66	19	1584.52	171	1583.35	1.5	1578.66
02/15/21	400	42	1583.70	152	1583.35	21	1585.75	3.5	1578.85	55	1577.67	19	1584.52	171	1583.23	1.5	1578.66
02/16/21	399	42	1583.66	152	1583.30	21	1585.71	3.4	1578.85	55	1577.64	19	1584.52	171	1583.19	1.5	1578.65
02/17/21	402	42	1583.63	152	1583.27	21	1585.71	3.4	1578.85	55	1577.63	19	1584.51	171	1583.17	1.5	1578.65
02/18/21	402	42	1583.61	152	1583.25	21	1585.72	3.4	1578.85	55	1577.65	19	1584.51	171	1583.15	1.5	1578.65
02/19/21	399	42	1583.61	152	1583.25	21	1585.73	3.4	1578.85	55	1577.65	19	1584.50	171	1583.15	1.5	1578.65
02/20/21	402	42	1583.60	152	1583.24	21	1585.73	3.4	1578.85	55	1577.61	19	1584.50	171	1583.14	1.5	1578.64
02/21/21	402	42	1583.59	152	1583.23	21	1585.74	3.4	1578.85	55	1577.57	19	1584.50	171	1583.13	1.5	1578.64
02/22/21	399	42	1583.59	152	1583.23	21	1585.75	3.4	1578.85	55	1577.59	19	1584.50	171	1583.13	1.5	1578.65
02/23/21	399	42	1583.58	152	1583.23	21	1585.76	3.4	1578.85	55	1577.58	19	1584.50	171	1583.13	1.5	1578.65
02/24/21	399	42	1583.57	151	1583.22	21	1585.76	3.4	1578.85	55	1577.58	19	1584.49	171	1583.13	1.5	1578.64
02/25/21	402	42	1583.56	151	1583.21	21	1585.77	3.4	1578.84	55	1577.57	19	1584.49	171	1583.12	1.5	1578.64
02/26/21	402	42	1583.56	151	1583.21	21	1585.78	3.4	1578.84	55	1577.54	19	1584.49	171	1583.12	1.5	1578.64
02/27/21	401	42	1583.55	151	1583.20	21	1585.78	3.3	1578.84	55	1577.54	19	1584.49	171	1583.11	1.5	1578.64
02/28/21	401	42	1583.54	151	1583.19	21	1585.78	3.3	1578.84	54	1577.56	19	1584.48	171	1583.10	1.5	1578.65
Monthly Average	401	42	1583.64	151	1583.29	21	1584.47	3.4	1578.85	55	1577.62	19	1584.52	171	1583.18	1.5	1578.65
Analytical ¹	Conc (mg/L)	Date	Conc (mg/L)	Date	Conc (mg/L)	Date	Conc (mg/L)	Date	Conc (mg/L)	Date	Conc (mg/L)	Date	Conc (mg/L)	Date	Conc (mg/L)	Date	
Perchlorate	26	2/3/2021	10	2/3/2021	200	2/3/2021	120	2/3/2021	150	2/3/2021	75	2/3/2021	71	2/3/2021	51	2/3/2021	
Hexavalent Chromium	ND	2/3/2021	0.0042	2/3/2021	0.31	2/3/2021	0.14	2/3/2021	0.57	2/3/2021	0.44	2/3/2021	0.080	2/3/2021	0.048	2/3/2021	
Total Chromium	ND	2/3/2021	0.0010	2/3/2021	0.32	2/3/2021	0.15	2/3/2021	0.59	2/3/2021	0.46	2/3/2021	0.076	2/3/2021	0.046	2/3/2021	

Notes:
 Flow reported as gpm is a daily average calculated from the totalizer reading.
 ND = Not detected above laboratory method detection limit (ClO₂ = 0.5 ug/L; ClO₃ = 10 ug/L; NO₃-N = 0.055 mg/L, Cr(VI) = 0.25 ug/L).
 ART-1, 2, 3, 4, 7B, and 8 have adjacent recovery wells, both of which can be used for extraction. The pumping well can be chosen manually or automatically, based on operational considerations. The wells with transducers are ART-1, -2, -3, -4, -7A, -8, -9, and PC-150.
 1: Analytical results are reported from Eurofins TestAmerica.
 2: On 02/13, LS #3 offline briefly due to maintenance
 3: On 02/13, ART-2 offline briefly due to maintenance
 4: On 02/13, ART-3A switched to ART-3 until 02/14
 5: On 02/13, ART-8A switched to ART8
 6: Conducted periodic bucket tests to confirm flow rates for PC-150. Average flow of 1.5 gpm determined from flow tests is presented for 01/01-01/31 flows and used for calculation purposes. Flow was steady throughout the month but the totalizer showed zero flow because totalizer units are 1,000 gallons.
 7: Duplicates taken on 02/03 for well ART4/4A; average of both values is presented and used for calculations.

Table 3 - Interceptor Well Field (IWF) Operational Metrics

Nevada Environmental Response Trust Groundwater Extraction and Treatment System Enhanced Operational Metrics																				
Date	I-AR		I-AA		I-AB		I-AC		I-AD		I-B		I-C		I-D		I-E		I-F	
	Flow (gpm)	Water Elevation (ft amsl)	Flow (gpm)	Water Elevation (ft amsl)	Flow (gpm)	Water Elevation (ft amsl)	Flow (gpm)	Water Elevation (ft amsl)	Flow (gpm)	Water Elevation (ft amsl)	Flow ³ (gpm)	Water Elevation (ft amsl)	Flow (gpm)	Water Elevation (ft amsl)	Flow (gpm)	Water Elevation (ft amsl)	Flow ^{4,5} (gpm)	Water Elevation (ft amsl)	Flow (gpm)	Water Elevation (ft amsl)
02/01/21	0.13	1723.20	1.0	1707.56	0.00	1719.77	0.00	1727.62	0.74	1722.32	0.21	1718.02	3.9	1708.28	1.4	1721.79	0.97	1718.66	4.2	1721.12
02/02/21	0.13	1723.22	1.0	1707.56	0.00	1719.77	0.00	1727.57	0.76	1722.43	0.22	1717.83	3.9	1708.28	1.4	1721.77	1.0	1718.45	4.2	1721.11
02/03/21	0.12	1723.25	1.0	1707.56	0.00	1719.76	0.00	1727.54	0.76	1722.59	0.23	1717.67	3.9	1708.28	1.3	1721.75	1.0	1718.31	4.2	1721.08
02/04/21	0.12	1723.37	1.0	1707.56	0.00	1719.75	0.00	1727.43	0.75	1722.63	0.24	1717.55	3.8	1708.20	1.3	1721.72	1.0	1718.27	4.2	1721.05
02/05/21 ¹	0.12	1723.55	1.0	1707.58	0.00	1719.74	0.00	1727.42	0.73	1722.75	0.37	1714.10	3.9	1708.12	1.4	1721.70	0.97	1718.49	4.2	1721.04
02/06/21	0.11	1723.58	1.0	1707.62	0.00	1719.68	0.00	1727.65	0.73	1722.76	0.49	1710.00	3.9	1708.08	1.4	1721.67	0.95	1718.58	4.3	1721.01
02/07/21	0.11	1723.60	1.0	1707.56	0.00	1719.68	0.00	1727.53	0.74	1722.73	0.48	1710.47	3.9	1708.08	1.4	1721.65	0.96	1718.53	4.3	1721.00
02/08/21 ²	0.11	1723.64	0.99	1707.90	0.00	1719.75	0.00	1727.17	0.70	1722.97	0.29	1716.13	3.8	1708.52	1.4	1721.65	0.89	1718.79	4.1	1721.03
02/09/21	0.12	1723.49	1.0	1707.56	0.02	1719.38	0.00	1726.95	0.73	1722.85	0.34	1716.21	3.9	1708.15	1.4	1721.63	0.70	1719.62	4.3	1720.99
02/10/21	0.11	1723.53	1.0	1707.56	0.00	1719.78	0.00	1726.88	0.73	1722.84	0.36	1715.66	3.9	1708.21	1.4	1721.63	0.62	1720.00	4.3	1720.99
02/11/21 ²	0.11	1723.54	1.0	1707.67	0.00	1719.79	0.03	1725.72	0.72	1722.90	0.23	1717.68	3.9	1708.27	1.3	1721.63	0.61	1720.03	4.2	1721.00
02/12/21 ²	0.11	1723.59	1.0	1707.72	0.00	1719.79	0.00	1727.37	0.71	1722.95	0.19	1718.29	3.8	1708.41	1.3	1721.62	0.71	1719.65	4.2	1721.02
02/13/21	0.12	1723.17	1.0	1707.57	0.00	1719.74	0.00	1727.18	0.72	1722.89	0.24	1717.40	3.8	1708.22	1.4	1721.60	0.77	1719.39	4.3	1721.01
02/14/21 ²	0.12	1723.19	1.0	1707.70	0.00	1719.73	0.00	1727.05	0.73	1722.83	0.17	1718.19	3.8	1708.34	1.4	1721.58	0.73	1719.54	4.2	1720.99
02/15/21 ²	0.12	1723.29	1.0	1707.85	0.00	1719.76	0.00	1726.92	0.75	1722.66	0.15	1718.75	3.7	1708.50	1.4	1721.58	0.98	1718.13	4.2	1721.01
02/16/21	0.12	1723.21	1.0	1707.57	0.00	1719.79	0.00	1726.83	0.78	1722.45	0.17	1718.70	3.8	1708.21	1.4	1721.54	1.2	1716.80	4.3	1720.94
02/17/21	0.13	1723.25	1.0	1707.56	0.00	1719.79	0.00	1726.78	0.79	1722.36	0.19	1718.61	3.8	1708.20	1.4	1721.51	1.2	1716.70	4.3	1720.90
02/18/21 ²	0.12	1723.40	0.99	1708.06	0.00	1719.76	0.00	1726.70	0.75	1722.61	0.40	1713.92	3.8	1708.70	1.4	1721.50	1.2	1716.95	4.1	1720.92
02/19/21	0.12	1723.33	1.0	1707.56	0.00	1719.71	0.00	1726.68	0.77	1722.48	0.42	1713.75	3.8	1708.19	1.4	1721.48	1.2	1716.83	4.3	1720.87
02/20/21 ²	0.12	1723.37	1.0	1707.74	0.00	1719.73	0.00	1726.72	0.76	1722.58	0.36	1715.01	3.8	1708.35	1.4	1721.46	1.1	1717.05	4.2	1720.87
02/21/21	0.12	1723.34	1.0	1707.64	0.00	1719.69	0.00	1726.63	0.78	1722.44	0.42	1713.66	3.8	1708.18	1.4	1721.43	1.1	1717.21	4.3	1720.82
02/22/21 ¹	0.11	1723.48	0.98	1708.09	0.00	1719.69	0.00	1726.61	0.75	1722.61	0.48	1711.80	3.7	1708.62	1.4	1721.44	1.1	1717.49	4.1	1720.85
02/23/21 ¹	0.11	1723.51	0.99	1708.01	0.00	1719.70	0.00	1726.62	0.74	1722.73	0.46	1712.46	3.7	1708.59	1.4	1721.43	1.0	1717.51	4.1	1720.84
02/24/21	0.11	1723.42	1.0	1707.64	0.00	1719.70	0.00	1726.59	0.77	1722.63	0.45	1713.02	3.8	1708.17	1.4	1721.40	1.1	1717.35	4.3	1720.77
02/25/21	0.12	1723.42	1.0	1707.66	0.00	1719.68	0.00	1726.58	0.75	1722.67	0.45	1712.74	3.8	1708.28	1.4	1721.40	0.88	1718.47	4.2	1720.75
02/26/21	0.11	1723.51	1.0	1707.87	0.00	1719.70	0.00	1726.65	0.74	1722.77	0.34	1716.14	3.8	1708.66	1.4	1721.39	1.0	1717.70	4.1	1720.79
02/27/21	0.12	1723.38	1.0	1707.58	0.00	1719.63	0.00	1726.58	0.77	1722.59	0.36	1714.67	3.8	1708.18	1.5	1721.35	1.1	1717.42	4.3	1720.72
02/28/21	0.12	1723.39	1.0	1707.64	0.00	1719.63	0.00	1726.54	0.75	1722.63	0.35	1715.69	3.8	1708.31	1.5	1721.33	1.0	1717.65	4.2	1720.71
Monthly Average	0.12	1723.40	1.0	1707.68	0.00	1719.72	0.00	1726.95	0.75	1722.67	0.32	1715.50	3.8	1708.31	1.4	1721.56	0.97	1718.20	4.2	1720.94
Analytical ⁴	Conc (mg/L)	Date	Conc (mg/L)	Date	Conc (mg/L)	Date	Conc (mg/L)	Date	Conc (mg/L)	Date	Conc (mg/L)	Date	Conc (mg/L)	Date	Conc (mg/L)	Date	Conc (mg/L)	Date	Conc (mg/L)	Date
Perchlorate	410	2/9/2021	37	2/9/2021	320	2/9/2021	200	2/11/2021	200	2/11/2021	410	2/9/2021	500	2/9/2021	700	2/9/2021	390	2/9/2021	510	2/9/2021
Hexavalent Chromium	0.13	2/9/2021	0.053	2/9/2021	ND	2/9/2021	1.7	2/11/2021	1.8	2/11/2021	0.33	2/9/2021	3.2	2/9/2021	4.5	2/11/2021	5.3	2/9/2021	12	2/9/2021
Total Chromium	4.9	2/9/2021	0.069	2/9/2021	0.021	2/9/2021	1.8	2/11/2021	1.8	2/11/2021	0.36	2/9/2021	3.0	2/9/2021	4.7	2/9/2021	5.5	2/9/2021	12	2/9/2021

Notes:
 Flow reported as gpm is a daily average calculated from the totalizer reading.
 1: Analytical results are reported from Eurofins TestAmerica.
 2: On 02/05, 02/08, 02/11, 02/12, 02/14, 02/15, 02/18, 02/20, 02/22, and 02/23, IWF offline intermittently due to maintenance at GWTP.
 3: On 02/18 I-B adjusted to meet flow target as directed by the Trust.
 4: On 02/15, I-E, I-M, and I-N adjusted to meet target as directed by the Trust.
 5: On 02/25, I-E, I-R, and I-S adjusted to meet target as directed by the Trust.

Table 3 - Interceptor Well Field (IWF) Operational Metrics

Nevada Environmental Response Trust Groundwater Extraction and Treatment System Enhanced Operational Metrics																				
Date	I-G		I-H		I-I		I-J		I-K		I-L		I-M		I-N		I-O		I-P	
	Flow (gpm)	Water Elevation (ft amsl)	Flow (gpm)	Water Elevation (ft amsl)	Flow (gpm)	Water Elevation (ft amsl)	Flow (gpm)	Water Elevation (ft amsl)	Flow (gpm)	Water Elevation (ft amsl)	Flow (gpm)	Water Elevation (ft amsl)	Flow ⁴ (gpm)	Water Elevation (ft amsl)	Flow ^{4,6} (gpm)	Water Elevation (ft amsl)	Flow (gpm)	Water Elevation (ft amsl)	Flow (gpm)	Water Elevation (ft amsl)
02/01/21	0.23	1722.20	1.0	1721.26	5.0	1722.89	7.2	1712.68	3.9	1708.15	1.2	1718.00	2.0	1721.59	3.3	1720.31	0.47	1722.74	1.7	1722.74
02/02/21	0.23	1722.15	1.0	1721.27	5.0	1722.90	7.2	1712.62	3.9	1708.15	1.2	1717.96	2.0	1721.56	3.3	1720.29	0.47	1722.74	1.7	1722.74
02/03/21	0.21	1722.22	1.0	1721.29	4.9	1722.91	7.2	1712.50	3.9	1708.15	1.2	1717.91	2.0	1721.53	3.3	1720.27	0.48	1722.74	1.7	1722.74
02/04/21	0.21	1722.24	1.0	1721.27	5.0	1722.87	7.2	1712.74	3.9	1708.15	1.2	1717.83	2.0	1721.49	3.3	1720.24	0.48	1722.71	1.7	1722.71
02/05/21 ¹	0.17	1722.28	0.99	1721.33	4.9	1722.88	7.2	1712.75	3.9	1708.19	1.2	1717.96	2.0	1721.49	3.2	1720.24	0.47	1722.72	1.7	1722.73
02/06/21	0.17	1722.29	0.98	1721.36	5.0	1722.88	7.2	1712.66	3.9	1708.15	1.2	1718.12	2.0	1721.46	3.2	1720.23	0.46	1722.72	1.7	1722.73
02/07/21	0.16	1722.32	1.0	1721.41	5.0	1722.89	7.2	1712.56	3.9	1708.15	1.2	1718.14	2.0	1721.44	3.2	1720.21	0.46	1722.73	1.7	1722.75
02/08/21 ²	0.16	1722.32	0.92	1721.54	4.8	1722.96	7.1	1713.20	3.8	1708.58	1.1	1718.94	1.9	1721.48	2.9	1720.32	0.42	1722.77	1.6	1722.78
02/09/21	0.16	1722.32	0.94	1721.51	5.0	1722.91	7.2	1712.63	3.9	1708.15	1.2	1719.02	2.0	1721.43	2.8	1720.29	0.40	1722.76	1.7	1722.75
02/10/21	0.16	1722.32	0.93	1721.52	4.9	1722.90	7.2	1712.67	3.9	1708.15	1.2	1718.79	1.9	1721.43	2.8	1720.29	0.37	1722.76	1.7	1722.74
02/11/21 ²	0.18	1722.31	0.92	1721.56	4.9	1722.91	7.2	1712.78	3.9	1708.23	1.2	1718.76	1.9	1721.45	2.6	1720.34	0.34	1722.77	1.7	1722.76
02/12/21 ²	0.20	1722.28	0.94	1721.55	4.9	1722.95	7.2	1712.79	3.9	1708.34	1.2	1717.69	1.9	1721.47	2.6	1720.38	0.49	1722.77	1.7	1722.79
02/13/21	0.20	1722.29	0.95	1721.53	5.0	1722.93	7.2	1712.49	3.9	1708.15	1.2	1717.07	1.9	1721.45	2.6	1720.36	0.57	1722.74	1.7	1722.77
02/14/21 ²	0.18	1722.28	0.94	1721.50	4.9	1722.91	7.2	1712.91	3.9	1708.30	1.2	1716.97	1.8	1721.49	2.6	1720.35	0.48	1722.73	1.7	1722.73
02/15/21 ²	0.23	1722.21	0.93	1721.54	4.9	1722.94	7.1	1713.12	3.8	1708.46	1.2	1717.51	1.9	1721.40	2.9	1720.25	0.43	1722.76	1.7	1722.76
02/16/21	0.27	1722.13	0.95	1721.50	5.0	1722.91	7.2	1712.67	3.9	1708.15	1.2	1718.13	2.0	1721.24	3.2	1720.09	0.48	1722.74	1.7	1722.74
02/17/21	0.26	1722.12	0.95	1721.46	5.0	1722.87	7.2	1712.83	3.9	1708.15	1.2	1718.26	2.0	1721.19	3.2	1720.06	0.49	1722.71	1.7	1722.71
02/18/21 ²	0.23	1722.14	0.91	1721.55	4.8	1722.92	7.0	1713.39	3.8	1708.61	1.2	1718.46	2.0	1721.22	3.0	1720.11	0.40	1722.74	1.6	1722.76
02/19/21	0.25	1722.13	0.94	1721.52	5.0	1722.89	7.2	1712.57	3.9	1708.15	1.2	1717.99	2.0	1721.16	3.1	1720.04	0.40	1722.75	1.6	1722.77
02/20/21 ²	0.20	1722.22	0.91	1721.61	4.9	1722.93	7.2	1712.85	3.9	1708.37	1.2	1718.25	2.0	1721.17	3.0	1720.08	0.43	1722.77	1.6	1722.80
02/21/21	0.19	1722.21	0.83	1721.73	5.0	1722.87	7.2	1712.70	3.9	1708.15	1.2	1717.81	2.0	1721.15	3.4	1719.92	0.46	1722.72	1.7	1722.74
02/22/21 ¹	0.22	1722.19	0.86	1721.69	4.8	1722.95	7.0	1713.23	3.8	1708.64	1.2	1717.93	1.9	1721.23	3.3	1719.93	0.47	1722.74	1.7	1722.76
02/23/21 ¹	0.21	1722.21	0.86	1721.72	4.8	1722.99	7.1	1713.04	3.8	1708.61	1.2	1718.20	1.8	1721.23	3.2	1719.94	0.59	1722.75	1.7	1722.77
02/24/21	0.17	1722.27	0.89	1721.65	4.9	1722.93	7.3	1712.47	3.9	1708.15	1.2	1718.02	1.9	1721.17	3.3	1719.88	0.72	1722.69	1.8	1722.71
02/25/21	0.17	1722.27	0.88	1721.64	4.9	1722.90	7.2	1712.77	3.9	1708.25	1.2	1718.04	1.9	1721.16	3.2	1719.89	0.33	1722.74	1.8	1722.70
02/26/21	0.20	1722.24	0.86	1721.73	4.8	1722.99	7.2	1713.14	3.8	1708.61	1.2	1717.84	1.8	1721.23	3.1	1719.97	0.55	1722.76	1.8	1722.76
02/27/21	0.21	1722.20	0.89	1721.65	5.0	1722.92	7.3	1712.49	3.9	1708.15	1.2	1717.04	1.9	1721.14	3.1	1719.90	0.63	1722.71	1.9	1722.72
02/28/21	0.19	1722.20	0.88	1721.63	4.9	1722.89	7.2	1712.87	3.9	1708.28	1.2	1717.08	1.8	1721.13	3.1	1719.90	0.54	1722.70	1.8	1722.70
Monthly Average	0.20	1722.23	0.93	1721.52	4.9	1722.91	7.2	1712.79	3.9	1708.28	1.2	1717.99	1.9	1721.34	3.1	1720.15	0.48	1722.74	1.7	1722.74
Analytical ³	Conc (mg/L)	Date	Conc (mg/L)	Date	Conc (mg/L)	Date	Conc (mg/L)	Date	Conc (mg/L)	Date	Conc (mg/L)	Date	Conc (mg/L)	Date	Conc (mg/L)	Date	Conc (mg/L)	Date	Conc (mg/L)	Date
Perchlorate	910	2/8/2021	880	2/8/2021	580	2/11/2021	200	2/11/2021	260	2/11/2021	250	2/9/2021	400	2/9/2021	430	2/9/2021	720	2/8/2021	830	2/8/2021
Hexavalent Chromium	16	2/8/2021	15	2/8/2021	7.7	2/11/2021	4.2	2/11/2021	2.5	2/11/2021	1.3	2/9/2021	5.5	2/9/2021	5.9	2/9/2021	12	2/8/2021	14	2/8/2021
Total Chromium	14	2/8/2021	14	2/8/2021	7.7	2/11/2021	4.2	2/11/2021	2.6	2/11/2021	1.6	2/9/2021	5.6	2/9/2021	6.7	2/9/2021	12	2/8/2021	13	2/8/2021

Notes:
 Flow reported as gpm is a daily average calculated from the totalizer reading.
 1: Analytical results are reported from Eurofins TestAmerica.
 2: On 02/05, 02/08, 02/11, 02/12, 02/14, 02/15, 02/18, 02/20, 02/22, and 02/23, IWF offline intermittently due to maintenance at GWTP.
 4: On 02/15, I-E, I-M, and I-N adjusted to meet target as directed by the Trust.
 6: On 02/21, I-N and I-S adjusted to meet flow target as directed by the Trust.
 7: Duplicates taken on 02/09 for well I-M; average of both values is presented and used for calculations.

Table 3 - Interceptor Well Field (IWF) Operational Metrics

Date	I-Q		I-R		I-S ^{6,9}		I-T		I-U		I-V		I-W		I-X ¹⁰		I-Y		I-Z	
	Flow (gpm)	Water Elevation (ft amsl)	Flow (gpm)	Water Elevation (ft amsl)	Flow (gpm)	Water Elevation (ft amsl)	Flow (gpm)	Water Elevation (ft amsl)	Flow (gpm)	Water Elevation (ft amsl)	Flow (gpm)	Water Elevation (ft amsl)	Flow (gpm)	Water Elevation (ft amsl)	Flow (gpm)	Water Elevation (ft amsl)	Flow (gpm)	Water Elevation (ft amsl)	Flow (gpm)	Water Elevation (ft amsl)
02/01/21	0.30	1720.69	1.1	1721.09	2.0	1721.10	0.71	1713.74	0.57	1716.87	4.4	1721.72	0.71	1722.76	3.7	1717.76	1.3	1715.62	8.5	1714.12
02/02/21	0.32	1720.58	1.1	1721.07	2.0	1721.08	0.70	1713.77	0.58	1716.66	4.4	1721.72	0.71	1722.76	3.7	1717.74	1.3	1715.57	8.5	1714.11
02/03/21	0.34	1720.52	1.1	1721.06	2.0	1721.05	0.70	1713.84	0.58	1716.67	4.4	1721.73	0.69	1722.79	3.7	1717.71	1.3	1715.54	8.5	1714.14
02/04/21	0.33	1720.48	1.1	1721.03	2.0	1721.02	0.63	1715.11	0.56	1717.01	4.4	1721.68	0.70	1722.74	3.7	1717.67	1.3	1715.51	8.5	1713.96
02/05/21 ²	0.28	1720.65	1.1	1721.05	1.8	1721.17	0.52	1717.51	0.57	1716.85	4.4	1721.70	0.68	1722.77	3.7	1717.69	1.3	1715.57	8.5	1714.13
02/06/21	0.28	1720.65	1.1	1721.04	1.6	1721.31	0.51	1717.72	0.58	1716.67	4.4	1721.69	0.69	1722.78	3.7	1717.66	1.3	1715.58	8.5	1714.08
02/07/21	0.32	1720.51	1.0	1721.06	1.6	1721.32	0.50	1717.79	0.58	1716.62	4.4	1721.71	0.68	1722.80	3.7	1717.63	1.3	1715.60	8.5	1714.12
02/08/21 ²	0.20	1720.88	1.0	1721.36	1.4	1721.46	0.48	1718.09	0.60	1716.42	4.3	1721.83	0.65	1722.88	3.6	1717.81	1.2	1716.13	8.3	1714.69
02/09/21	0.19	1720.94	1.0	1720.66	0.82	1721.71	0.50	1717.91	0.62	1716.06	4.4	1721.75	0.68	1722.83	3.7	1717.69	1.3	1715.92	8.5	1714.25
02/10/21	0.20	1720.93	1.1	1720.16	2.0	1719.15	0.50	1717.94	0.61	1716.26	4.4	1721.73	0.68	1722.82	3.7	1717.67	1.3	1715.82	8.5	1714.18
02/11/21 ²	0.20	1720.93	1.1	1719.63	1.7	1719.28	0.48	1718.13	0.60	1716.44	4.4	1721.75	0.67	1722.85	3.7	1717.71	1.3	1715.88	8.4	1714.30
02/12/21 ²	0.21	1720.91	1.0	1719.06	2.9	1713.08	0.47	1718.34	0.59	1716.57	4.4	1721.81	0.67	1722.88	3.7	1717.77	1.3	1715.74	8.4	1714.48
02/13/21	0.21	1720.92	1.0	1718.81	2.8	1711.35	0.47	1718.34	0.59	1716.63	4.4	1721.77	0.70	1722.83	3.7	1717.71	1.3	1715.53	8.5	1714.28
02/14/21 ²	0.20	1720.91	1.0	1719.10	2.7	1711.71	0.46	1718.35	0.60	1716.36	4.4	1721.75	0.68	1722.82	3.7	1717.72	1.3	1715.53	8.4	1714.31
02/15/21 ²	0.23	1720.84	0.98	1719.22	1.8	1717.54	0.45	1718.58	0.63	1715.97	4.3	1721.81	0.60	1722.88	3.6	1717.78	1.3	1715.74	8.3	1714.58
02/16/21	0.26	1720.72	0.99	1719.18	1.2	1720.38	0.45	1718.52	0.66	1715.45	4.4	1721.75	0.64	1722.85	3.7	1717.62	1.3	1715.75	8.5	1714.23
02/17/21	0.26	1720.67	0.98	1719.21	1.4	1721.24	0.45	1718.47	0.62	1715.94	4.4	1721.68	0.67	1722.80	3.7	1717.56	1.3	1715.79	8.5	1714.06
02/18/21 ²	0.22	1720.77	0.90	1720.08	1.7	1721.11	0.42	1718.83	0.57	1716.78	4.3	1721.77	0.66	1722.84	3.6	1717.72	1.2	1716.11	8.2	1714.75
02/19/21	0.22	1720.78	0.92	1719.93	1.7	1721.06	0.43	1718.76	0.62	1716.11	4.4	1721.71	0.70	1722.81	3.7	1717.56	1.3	1715.81	8.5	1714.38
02/20/21 ²	0.21	1720.81	0.94	1719.78	1.5	1721.20	0.42	1718.88	0.67	1715.38	4.4	1721.80	0.68	1722.87	3.7	1717.61	1.2	1715.99	8.4	1714.62
02/21/21	0.22	1720.76	0.97	1719.49	1.9	1720.74	0.42	1718.78	0.68	1715.12	4.4	1721.69	0.71	1722.78	3.7	1717.49	1.3	1715.82	8.5	1714.29
02/22/21 ¹	0.19	1720.85	0.94	1719.79	1.9	1720.73	0.40	1718.98	0.66	1715.50	4.3	1721.82	0.68	1722.85	3.6	1717.65	1.2	1716.11	8.2	1714.94
02/23/21 ¹	0.20	1720.85	0.91	1719.93	1.7	1720.97	0.40	1719.03	0.68	1715.20	4.3	1721.89	0.68	1722.89	3.6	1717.64	1.2	1716.28	8.2	1715.07
02/24/21	0.20	1720.81	0.90	1719.87	1.8	1720.92	0.40	1718.56	0.70	1714.96	4.4	1721.77	0.72	1722.80	3.7	1717.46	1.2	1716.10	8.5	1714.51
02/25/21	0.19	1720.82	0.92	1719.51	1.7	1720.97	0.44	1718.41	0.69	1715.01	4.4	1721.74	0.71	1722.79	3.7	1717.47	1.2	1716.07	8.4	1714.49
02/26/21	0.18	1720.88	1.2	1719.02	2.4	1718.22	0.38	1719.11	0.71	1714.80	4.3	1721.88	0.54	1723.02	3.6	1717.59	1.2	1715.94	8.3	1715.02
02/27/21	0.19	1720.83	1.2	1718.76	2.3	1715.86	0.40	1718.89	0.69	1714.97	4.4	1721.76	0.59	1722.97	3.7	1717.41	1.3	1715.39	8.5	1714.42
02/28/21	0.21	1720.73	1.2	1718.91	2.3	1715.84	0.39	1718.92	0.72	1714.51	4.4	1721.72	0.54	1722.99	3.7	1717.43	1.2	1715.53	8.4	1714.44
Monthly Average	0.23	1720.77	1.0	1719.96	1.9	1719.38	0.48	1717.83	0.63	1715.99	4.4	1721.75	0.67	1722.84	3.7	1717.64	1.3	1715.78	8.4	1714.39
Analytical ¹	Conc (mg/L)	Date	Conc (mg/L)	Date	Conc (mg/L)	Date	Conc (mg/L)	Date	Conc (mg/L)	Date	Conc (mg/L)	Date	Conc (mg/L)	Date	Conc (mg/L)	Date	Conc (mg/L)	Date	Conc (mg/L)	Date
Perchlorate	700	2/8/2021	570	2/9/2021	220	2/9/2021	920	2/8/2021	1,100	2/8/2021	610	2/11/2021	730	2/8/2021	620	2/9/2021	310	2/9/2021	330	2/11/2021
Hexavalent Chromium	15	2/8/2021	0.92	2/9/2021	1.8	2/9/2021	16	2/8/2021	16	2/8/2021	8.7	2/11/2021	13	2/8/2021	8.6	2/9/2021	1.2	2/9/2021	7.3	2/11/2021
Total Chromium	13	2/8/2021	1.1	2/9/2021	1.8	2/9/2021	15	2/8/2021	15	2/8/2021	8.7	2/11/2021	12	2/8/2021	8.2	2/9/2021	1.3	2/9/2021	7.5	2/11/2021

Notes:
 Flow reported as gpm is a daily average calculated from the totalizer reading.
 1: Analytical results are reported from Eurofins TestAmerica.
 2: On 02/05, 02/08, 02/11, 02/12, 02/14, 02/15, 02/18, 02/20, 02/22, and 02/23, IWF offline intermittently due to maintenance at GWTP.
 6: On 02/21, I-N and I-S adjusted to meet flow target as directed by the Trust.
 8: On 02/09, 02/10, and 02/15, I-S offline intermittently due to maintenance.
 9: On 02/17, I-S adjusted to meet flow target as directed by the Trust.
 10: On 02/13, I-X offline briefly due to maintenance.

Table 4 - Treatment Plant Operational Metrics

Nevada Environmental Response Trust Groundwater Extraction and Treatment System Enhanced Operational Metrics																
Date	LS #2	GWTP Effluent ¹				GW-11 Influent ¹				FBR Plant Influent ¹						
	Flow (gpm)	Flow (gpm)	TA - Cr (TR) (mg/L)	TA - Cr (VI) (mg/L)	TA - ClO ₂ (mg/L)	Flow ⁴ (gpm)	TA - Cr (TR) (mg/L)	TA - Cr (VI) (mg/L)	TA - ClO ₂ (mg/L)	Flow (gpm)	TA - ClO ₂ (mg/L)	ETI - ClO ₂ (mg/L)	TA - ClO ₂ (mg/L)	TA - NO ₃ - N (mg/L)	TA - Cr (TR) (mg/L)	TA - Cr (VI) (mg/L)
02/01/21	944	62				7.5	0.054	0.054	35	1,053		57	110	8.3	0.043	0.032
02/02/21	945	62				0.02				1,040		56				
02/03/21	941	63	0.097 B	ND	520	0.00				1,066		57				
02/04/21	951	62				0.03				1,019		57				
02/05/21	943	62				0.04				1,015		56				
02/06/21	944	62				0.03				1,027	69	54				
02/07/21	944	61				0.04				1,023		56				
02/08/21	943	61				0.03				1,034		61		8.7	0.026	0.026
02/09/21	951	62				0.01				1,017		55				
02/10/21	945	62	0.12	ND	450	0.01				1,017		53				
02/11/21	944	62				0.02				1,016		53				
02/12/21	944	62				0.00				1,057		53				
02/13/21 ³	929	62				0.00				1,066	50	53				
02/14/21	938	62				0.03				1,034		54				
02/15/21	942	62				0.03				1,015		52		8.7	0.035	0.026
02/16/21	947	61				0.01				1,023		41				
02/17/21	946	63	0.29	ND	410	0.04				1,008		55				
02/18/21	945	61				0.05				1,020		55				
02/19/21	941	63				0.05				1,017		56				
02/20/21	944	61				0.00				1,005	64	48				
02/21/21	944	62				0.04				1,006		52				
02/22/21	941	61				0.04				1,001		55		7.7	0.023	0.021
02/23/21	948	62				0.02				1,009		53				
02/24/21	940	62	0.21	ND	550	0.00				1,006		56				
02/25/21	944	62				0.05				1,014		54				
02/26/21	943	60				0.04				1,033		54				
02/27/21	943	63				0.03				1,011	60	50				
02/28/21	931	62				0.06				1,000		55				
Monthly Average ²	943	62	0.13	ND	259	0.29	0.054	0.054	35	1,023	61	54	110	8.3	0.030	0.025

Notes:
 Flow reported as gpm is a daily average calculated from the totalizer reading. The only exceptions are the instantaneous flow readings recorded for the 1st and 2nd Stage FBR flows.
 ND = Not detected above laboratory method detection limit (ClO₂ = 0.5 ug/L; ClO₃ = 10 ug/L; NO₃-N= 0.055 mg/L, Cr(VI) = 0.25 ug/L).
 B = Compound was found in the blank and sample.
 1: ETI = Envirogen internal process control data, TA = Eurofins TestAmerica data.
 2: All average concentrations reported are monthly flow weighted averages.
 3: On 02/13, LS #2 totalizer offline briefly due to maintenance.

Table 4 - Treatment Plant Operational Metrics

Nevada Environmental Response Trust Groundwater Extraction and Treatment System Enhanced Operational Metrics														
Date	1st Stage FBR ¹			2nd Stage FBR ¹			FBR Plant Effluent							
	Flow (gpm)	pH (s.u.)	ORP (mV)	Flow (gpm)	pH (s.u.)	ORP (mV)	Flow ² (gpm)	TA - ClO ₄ (mg/L)	ETI - ClO ₄ (mg/L)	TA - ClO ₃ (mg/L)	TA - Cr (TR) (mg/L)	TA - Cr (VI) (mg/L)	TA - NO ₃ - N (mg/L)	ETI - Turbidity (NTU)
02/01/21	1,072	7.0	-382	941	6.6	-409	1,078		0.00	0.022 J	0.0063 J	ND	ND	36
02/02/21	1,074	6.9	-360	926	6.6	-410	1,083		0.00					32
02/03/21	1,015	7.0	-332	937	6.6	-413	1,068		0.00					36
02/04/21	1,029	6.4	-319	896	6.5	-365	1,038		0.00					27
02/05/21	1,062	6.4	-340	916	6.5	-363	817		0.00					30
02/06/21	1,064	6.4	-347	856	6.5	-373	1,072	ND	0.00					31
02/07/21	1,046	6.4	-353	922	6.6	-386	1,062		0.00					36
02/08/21	1,063	6.6	-352	899	6.6	-392	1,080		0.00		0.0085 J	ND	ND	33
02/09/21	966	6.4	-354	723	6.6	-399	1,005		0.00					33
02/10/21	1,034	6.4	-355	916	6.6	-405	1,022		0.00					28
02/11/21	1,090	6.5	-350	982	6.6	-409	1,053		0.00					30
02/12/21	1,086	6.5	-347	952	6.6	-377	1,091		0.00					33
02/13/21	1,056	6.6	-337	936	6.6	-385	1,065	ND	0.00					38
02/14/21	1,051	6.4	-345	965	6.6	-398	1,075		0.00					28
02/15/21	1,018	6.4	-351	899	6.6	-403	1,056		0.00		0.0039 J	ND	ND	28
02/16/21	1,025	6.3	-354	909	6.5	-406	1,055		0.00					30
02/17/21	1,068	6.4	-356	818	6.6	-410	1,053		0.00					40
02/18/21	1,052	6.6	-383	874	6.5	-386	1,067		0.00					30
02/19/21	1,051	6.4	-387	897	6.6	-401	840		0.00					25
02/20/21	1,049	6.4	-387	806	6.6	-408	1,056	ND	0.00					24
02/21/21	1,058	6.4	-388	914	6.6	-411	1,049		0.00					25
02/22/21	1,050	6.5	-388	937	6.5	-413	1,060		0.00					30
02/23/21	1,052	6.5	-378	931	6.5	-415	1,046		0.00		0.0017 J	ND	ND	31
02/24/21	1,049	6.5	-355	911	6.5	-413	1,029		0.00					23
02/25/21	1,050	6.5	-366	921	6.6	-396	1,057		0.00					30
02/26/21	1,047	6.5	-370	845	6.6	-409	1,059		0.00					24
02/27/21	1,054	6.5	-350	907	6.6	-411	823	ND	0.00					22
02/28/21	1,000	6.5	-351	890	6.6	-415	1,045		0.00					27
Monthly Average ²	1,047	6.5	-359	901	6.6	-399	1,032	ND	ND	0.022	0.0046	ND	ND	30

Notes:

Flow reported as gpm is a daily average calculated from the totalizer reading. The only exceptions are the instantaneous flow readings recorded for the 1st and 2nd Stage FBR flows.

ND = Not detected above laboratory method detection limit (ClO₄ = 0.5 ug/L; ClO₃ = 10 ug/L; NO₃-N = 0.055 mg/L, Cr(VI) = 0.25 ug/L).

J = Result is less than the reporting limit but greater than or equal to the method detection limit and the concentration is an approximate value.

1: ETI = Envirogen internal process control data, TA = Eurofins TestAmerica data.

4: For 1st and 2nd stage FBRs, flow measurements are collected from the influent lines and pH and ORP samples are collected from the recycle lines

5: FBR Plant Effluent represents effluent discharged to Las Vegas Wash. While this may represent the entirety of the FBR Plant effluent, any diversions to GW-11 are subtracted from the original effluent flow.

GW-11 Level Monitoring ¹		
Date	Field Measurement (ft)	Volume (MG)
02/15/21	31.7	34.4
02/28/21	31.7	34.4

GW-11 Leak Detection Monitoring				
Date	Amount Pumped ² (gallons)			
	NW Corner	NE Corner	SW Corner	SE Corner
02/15/21	0	0	592	0
02/28/21	0	0	581	0

GW-11 Composite Sample ³		
Analytes	Concentration	Units
Perchlorate	5.7	mg/L
Chlorate	5.0	mg/L
Ammonia as N	0.069	mg/L
Total Phosphorus	0.57	mg/L
Total Dissolved Solids (TDS)	12,000	mg/L
Total Suspended Solids (TSS)	60	mg/L
pH	8.8 HF	s.u.
Calcium	550	mg/L
Iron	1.0	mg/L
Chromium (total)	0.022	mg/L
Chromium VI	ND	mg/L
Chloride	4,000	mg/L
Nitrate as N	ND	mg/L
Sulfate	3,500	mg/L

Notes:

HF = Field parameter with a holding time of 15 minutes. Test performed by laboratory at client's request.

J = Result is less than the reporting limit but greater than or equal to the method detection limit and the concentration is an approximate value.

ND = Not detected above laboratory method detection limit (NH₃-N= 0.1 mg/L; Total P = 0.025 ug/L; Cr(VI) = 0.25 ug/L).

1: A transducer installed along the eastern berm provides water pressure measurements that are correlated to elevations for calculation of water depths. Results from a December 2018 bathymetric survey of the pond will be used to identify adjustment to the procedure, if necessary.

2: Pumping occurs over three consecutive days. The total amount pumped over the three day period is listed with the last day pumping occurred.

3: GW-11 Corner Composite Sample is collected quarterly, most recent sampling results are presented. Sampled on: November 12, 2020.

Nevada Environmental Response Trust Groundwater Extraction and Treatment System Enhanced Operational Metrics						
Date	Flow ¹ (gpm)	FBR Influent Concentration			Influent Function Load ³ (lbs/day)	6 Month Rolling Average (lbs/day)
		ClO ₄ ² (mg/L)	NO ₃ as N (mg/L)	ClO ₃ (mg/L)		
Mar 2020	1,073	66	10	130	556	713
Apr 2020	1,078	77	11	100	525	658
May 2020	1,065	86	11	120	582	598
June 2020	1,019	98	12	120	592	548
July 2020	1,035	66	11	91	458	536
Aug 2020	1,040	59	9	100	444	526
Sep 2020	1,038	59	9	120	492	516
Oct 2020	1,029	64	9	94	441	501
Nov 2020	1,037	56	10	100	451	480
Dec 2020	1,027	59	9	130	507	465
Jan 2021	1,047	54	9	110	454	465
Feb 2021	1,023	61	8	110	457	467

Notes:

Concentrations and flow are presented as monthly average.

1: Flow used in loading calculation is average monthly FBR influent flow.

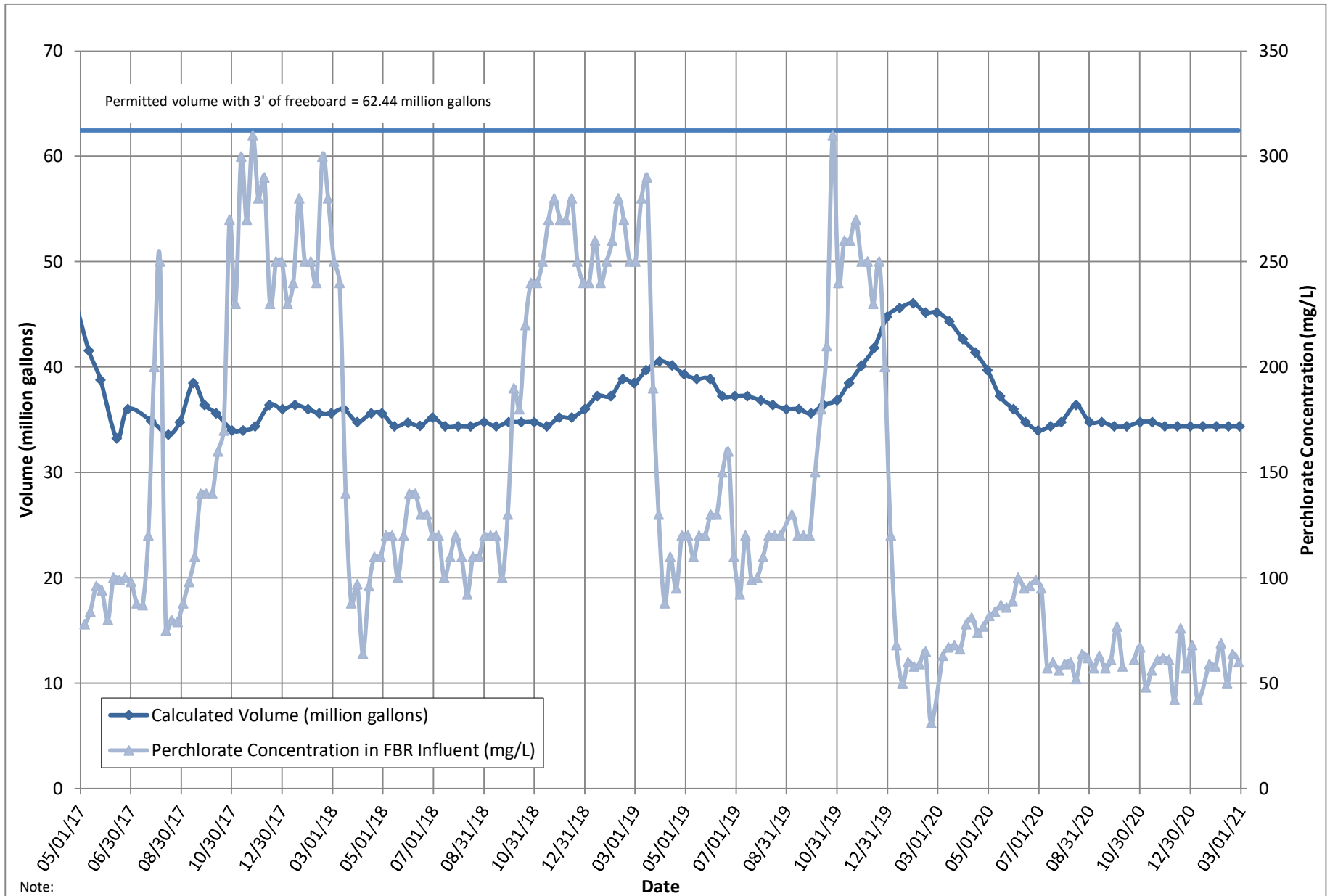
2: The AP-5 wash water feed rate was increased on October 1, 2019 in accordance with the higher seasonal ammonia permit limits beginning October 1. The AP-5 wash water feed rate was decreased in March 2020 to prepare for the lower seasonal ammonia permit limits beginning April 1. AP-5 sediment mixing and solids washing activities were completed on January 4, 2020. AP-5 tank processing was completed on 7/15/20.

3: FBR loading calculated as $[(0.9 \times \text{NO}_3 \text{ as N} + 0.17 \times \text{ClO}_3 + 0.18 \times \text{ClO}_4) \times \text{Flow} \times 1440 / 1000000 \times 8.34]$.

Nevada Environmental Response Trust Groundwater Extraction and Treatment System Enhanced Operational Metrics																
Date	E1-1		E1-2		E1-3		E2-1		E2-2		E2-3		E2-4		E2-5	
	Flow (gpm)	Water Elevation (ft amsl)	Flow (gpm)	Water Elevation (ft amsl)	Flow (gpm)	Water Elevation (ft amsl)	Flow (gpm)	Water Elevation (ft amsl)	Flow (gpm)	Water Elevation (ft amsl)	Flow (gpm)	Water Elevation (ft amsl)	Flow (gpm)	Water Elevation (ft amsl)	Flow (gpm)	Water Elevation (ft amsl)
02/01/21	0.49	1710.62	0.86	1709.78	0.61	1710.61	0.92	1716.48	1.1	1716.71	1.2	1717.38	1.6	1713.53	0.32	1717.51
02/02/21	0.46	1710.51	0.86	1709.76	0.62	1710.59	0.92	1717.00	1.1	1716.89	1.2	1717.78	1.6	1713.83	0.31	1717.41
02/03/21	0.50	1711.22	0.87	1711.09	0.62	1711.00	0.95	1714.50	1.1	1715.18	1.2	1716.37	1.6	1714.19	0.31	1717.55
02/04/21	0.47	1710.99	0.85	1711.04	0.61	1710.31	0.91	1714.56	1.1	1714.50	0.95	1716.83	1.6	1714.02	0.30	1717.46
02/05/21	0.46	1710.53	0.85	1710.92	0.63	1710.46	0.92	1717.29	1.1	1717.33	0.93	1719.65	1.6	1711.76	0.30	1718.07
02/06/21	0.42	1710.81	0.87	1710.95	0.66	1710.40	0.93	1715.77	1.1	1715.53	1.2	1716.28	1.5	1713.98	0.28	1717.76
02/07/21	0.42	1711.58	0.88	1711.29	0.66	1710.78	0.97	1714.65	1.2	1714.51	1.2	1714.84	1.5	1714.56	0.29	1716.84
02/08/21	0.40	1711.01	0.85	1709.76	0.65	1710.42	0.90	1716.52	1.1	1716.34	1.2	1717.23	1.5	1713.57	0.29	1717.42
02/09/21	0.41	1711.52	0.87	1710.61	0.67	1709.78	0.95	1715.75	1.1	1714.85	1.2	1716.70	1.5	1713.47	0.26	1716.87
02/10/21	0.41	1711.00	0.87	1709.70	0.66	1710.48	0.95	1715.91	1.1	1716.19	1.2	1714.97	1.5	1713.73	0.30	1717.93
02/11/21	0.40	1710.63	0.88	1709.59	0.67	1710.02	0.96	1716.51	1.1	1716.44	1.2	1714.67	1.5	1713.51	0.26	1718.62
02/12/21	0.41	1709.98	0.88	1709.64	0.67	1710.64	0.96	1716.52	1.0	1716.40	1.3	1716.20	1.5	1713.71	0.03	1721.19
02/13/21	0.40	1710.58	0.87	1709.54	0.65	1714.47	0.95	1715.87	1.0	1715.73	1.2	1715.43	1.5	1713.39	0.42	1713.31
02/14/21	0.41	1710.26	0.87	1710.36	0.63	1713.07	0.94	1717.17	0.98	1716.77	1.2	1715.88	1.5	1713.53	0.37	1716.01
02/15/21	0.44	1709.73	0.9	1709.71	0.64	1710.05	0.92	1716.75	0.98	1716.52	1.2	1716.20	1.5	1713.26	0.38	1714.47
02/16/21	0.44	1710.61	0.87	1709.75	0.62	1710.44	0.96	1716.61	1.00	1716.31	1.2	1716.46	1.5	1713.68	0.36	1715.21
02/17/21	0.43	1709.81	0.88	1709.77	0.63	1710.57	0.92	1716.14	0.99	1713.50	1.2	1716.90	1.5	1713.66	0.33	1716.76
02/18/21	0.39	1709.92	0.88	1709.75	0.63	1710.52	0.86	1715.50	0.97	1716.13	1.1	1716.52	1.5	1713.75	0.32	1716.44
02/19/21	0.38	1712.94	0.88	1711.87	0.63	1709.45	0.96	1715.21	0.98	1714.45	1.1	1715.90	1.5	1714.86	0.32	1717.90
02/20/21	0.38	1712.08	0.89	1711.96	0.65	1709.69	0.89	1715.01	0.98	1715.37	1.1	1716.84	1.5	1713.96	0.34	1717.81
02/21/21	0.37	1712.28	0.88	1711.72	0.65	1709.37	0.98	1715.47	0.97	1714.05	1.1	1715.88	1.5	1714.36	0.31	1717.54
02/22/21	0.36	1711.88	0.90	1710.96	0.67	1709.62	0.86	1714.62	1.00	1714.77	1.1	1715.50	1.5	1714.71	0.32	1717.95
02/23/21 ²	0.35	1709.68	0.85	1709.66	0.61	1708.47	0.85	1718.77	0.92	1716.47	1.1	1719.55	1.4	1718.11	0.29	1719.17
02/24/21	0.41	1711.53	0.89	1709.56	0.69	1710.62	0.98	1715.32	1.2	1715.07	1.1	1715.23	1.5	1713.51	0.25	1717.37
02/25/21	0.39	1710.94	0.85	1709.64	0.65	1711.20	0.93	1715.71	1.1	1715.94	1.1	1717.30	1.5	1713.77	0.23	1717.70
02/26/21	0.39	1711.30	0.87	1709.75	0.67	1710.47	0.92	1717.27	1.1	1716.31	1.0	1718.13	1.5	1713.80	0.15	1719.07
02/27/21	0.37	1711.15	0.88	1709.71	0.66	1710.80	0.93	1717.22	1.1	1717.59	1.1	1717.66	1.5	1713.73	0.34	1717.33
02/28/21	0.39	1710.75	0.89	1709.77	0.67	1710.63	0.93	1717.25	1.1	1716.66	1.1	1717.18	1.5	1713.80	0.32	1717.11
Monthly Average	0.41	1710.92	0.87	1710.27	0.65	1710.54	0.93	1716.12	1.1	1715.81	1.2	1716.62	1.5	1713.92	0.30	1717.35
Analytical ¹	Conc (mg/L)	Date	Conc (mg/L)	Date	Conc (mg/L)	Date	Conc (mg/L)	Date	Conc (mg/L)	Date	Conc (mg/L)	Date	Conc (mg/L)	Date	Conc (mg/L)	Date
Perchlorate	570	2/11/2021	1,100	2/11/2021	410	2/11/2021	97	2/11/2021	400	2/11/2021	900	2/11/2021	950	2/11/2021	1,150	2/11/2021
Hexavalent Chromium	0.069	2/11/2021	0.45	2/11/2021	0.67	2/11/2021	0.029	2/11/2021	0.028	2/11/2021	0.077	2/11/2021	0.077	2/11/2021	0.18	2/11/2021
Total Chromium	0.066	2/11/2021	0.43	2/11/2021	0.65	2/11/2021	0.04	2/11/2021	0.028	2/11/2021	0.074	2/11/2021	0.072	2/11/2021	0.18	2/11/2021

Notes:
 Flow reported as gpm is a daily average calculated from the totalizer reading.
 The flow rate at individual wells is adjusted daily to maintain the water level in the wells above the pump.
 1: Analytical results are reported from Eurofins TestAmerica.
 2: On 02/23 AP Area wells down briefly due to maintenance.
 3: Duplicates taken on 02/11 for well E2-5; average of both values is presented and used for calculations.

Figure 1 - GW-11 Pond Volume and FBR Influent Perchlorate Concentration



Note:

1. Treatment of AP-5 wash water began on July 17, 2017 and was suspended on August 4, 2017 to allow Envirogen to evaluate internal process controls to meet discharge limits. Treatment of AP-5 wash water resumed on August 31, 2017. The AP-5 wash water feed rate was increased on October 1, 2019 in accordance with the higher seasonal ammonia permit limits beginning October 1. The AP-5 wash water feed rate was decreased in March 2019 to prepare for the lower seasonal ammonia permit limits beginning April 1. AP-5 tank processing was completed on 7/15/20.

Figure 2 - FBR Equivalent Loading Calculation

