

Nevada Environmental Response Trust Groundwater Extraction and Treatment System Enhanced Operational Metrics																				
Date	LS #1	PC-116R (East Well)		PC-99R2/R3 (Center Well)		PC-115R (West Well)		PC-117		PC-118		PC-119		PC-120		PC-121		PC-133		
	Flow (gpm)	Flow (gpm)	Water Elevation (ft amsl)	Flow (gpm)	Water Elevation (ft amsl)	Flow (gpm)	Water Elevation (ft amsl)	Flow (gpm)	Water Elevation (ft amsl)	Flow (gpm)	Water Elevation (ft amsl)	Flow (gpm)	Water Elevation (ft amsl)	Flow* (gpm)	Water Elevation (ft amsl)	Flow (gpm)	Water Elevation (ft amsl)	Flow* (gpm)	Water Elevation* (ft amsl)	
12/01/20	509	163	1536.22	89	1541.20	130	1542.20	108	1546.44	71	1546.44	102	1548.99	50	1548.99	20	1549.98	9.7	1526.61	
12/02/20	500	163	1536.21	89	1541.60	131	1542.21	108	1536.56	72	1546.45	102	1547.83	50	1548.98	20	1549.97	9.0	1526.57	
12/03/20 ³	308	107	1546.92	58	1547.81	85	1548.46	71	1548.40	47	1551.17	67	1551.07	33	1551.77	13	1551.87	6.3	1542.87	
12/04/20	332	114	1537.41	65	1541.29	91	1540.74	76	1537.25	50	1546.84	75	1548.24	37	1549.34	15	1550.29	6.2	1526.64	
12/05/20	464	164	1537.02	91	1541.25	131	1542.51	108	1537.04	72	1546.63	102	1548.10	50	1549.22	20	1550.19	9.7	1526.73	
12/06/20	463	164	1536.80	92	1541.23	131	1542.42	108	1536.97	72	1546.60	103	1548.03	50	1549.17	20	1550.13	9.7	1526.74	
12/07/20	463	164	1536.66	91	1541.32	131	1542.37	108	1536.85	71	1546.59	102	1547.98	50	1549.11	21	1550.09	9.7	1526.64	
12/08/20	463	163	1536.57	91	1540.83	130	1542.32	108	1536.80	72	1546.50	102	1547.94	50	1549.08	20	1550.06	9.7	1526.84	
12/09/20	463	163	1536.55	91	1541.19	131	1542.32	108	1536.81	71	1546.54	103	1547.93	50	1549.06	20	1550.04	9.7	1526.88	
12/10/20	469	164	1536.47	90	1541.07	131	1542.29	108	1536.73	72	1546.50	102	1547.89	49	1549.03	20	1550.01	9.0	1526.71	
12/11/20	458	163	1536.42	91	1541.09	130	1542.28	108	1536.71	71	1546.50	103	1547.88	50	1549.01	20	1549.99	9.7	1526.64	
12/12/20	468	164	1536.37	91	1541.12	131	1542.22	108	1536.66	72	1546.49	102	1547.83	50	1548.97	20	1549.95	9.7	1526.58	
12/13/20	467	163	1536.38	91	1540.74	130	1542.26	108	1536.66	71	1546.44	102	1547.84	50	1548.98	21	1549.96	9.0	1526.60	
12/14/20	468	163	1536.32	91	1541.19	131	1542.21	108	1536.62	72	1546.42	103	1547.81	50	1548.94	20	1549.93	9.7	1526.54	
12/15/20	474	164	1536.30	90	1540.96	130	1542.20	108	1536.59	71	1546.44	102	1547.79	50	1548.93	20	1549.91	9.7	1526.46	
12/16/20	468	163	1536.28	91	1541.02	131	1542.19	108	1536.58	72	1546.39	102	1547.79	50	1548.92	20	1549.90	9.0	1526.66	
12/17/20	463	163	1536.32	91	1541.23	129	1542.19	108	1536.60	71	1546.45	102	1547.77	49	1548.91	20	1549.89	9.7	1526.91	
12/18/20	458	163	1536.27	91	1541.00	131	1542.17	108	1536.56	71	1546.39	102	1547.75	50	1548.88	20	1549.86	9.7	1526.49	
12/19/20	452	164	1536.26	91	1541.11	130	1542.15	108	1536.53	71	1546.37	102	1547.69	50	1548.09	21	1549.82	9.0	1526.51	
12/20/20	452	163	1536.25	91	1540.97	131	1542.18	108	1536.52	72	1546.40	103	1547.76	46	1548.95	20	1549.87	9.7	1526.56	
12/21/20	453	163	1536.22	91	1540.95	131	1542.16	108	1536.51	71	1546.39	102	1547.74	45	1548.89	20	1549.86	9.7	1522.92	
12/22/20	453	164	1536.17	91	1540.49	130	1542.13	108	1536.48	72	1546.43	103	1547.72	50	1548.86	20	1549.83	10	1521.81	
12/23/20	451	163	1536.17	92	1541.02	131	1542.12	108	1536.44	71	1546.37	102	1547.69	49	1548.81	20	1549.81	10	1520.95	
12/24/20	452	163	1536.18	91	1540.86	130	1542.11	108	1536.44	72	1546.39	102	1547.71	50	1548.85	20	1549.82	10	1520.03	
12/25/20	452	163	1536.16	91	1540.77	130	1542.12	108	1536.42	71	1546.42	102	1547.71	50	1548.85	21	1549.82	10	< 1520.00	
12/26/20	449	163	1536.13	92	1540.91	131	1542.12	108	1536.40	71	1546.35	103	1547.70	49	1548.84	20	1549.81	9.7	< 1520.00	
12/27/20	449	164	1536.13	91	1540.75	130	1542.14	108	1536.41	72	1546.40	102	1547.70	50	1548.85	20	1549.82	10.4	< 1520.00	
12/28/20	451	163	1536.11	92	1540.80	131	1542.11	108	1536.40	71	1546.39	102	1547.69	50	1548.84	20	1549.80	9.7	< 1520.00	
12/29/20	456	163	1536.10	91	1540.76	130	1542.11	108	1536.39	72	1546.40	103	1547.68	49	1548.82	20	1549.79	9.7	< 1520.00	
12/30/20	455	163	1536.12	92	1540.58	131	1542.13	108	1536.37	71	1546.43	102	1547.69	50	1548.84	20	1549.81	9.7	< 1520.00	
12/31/20	453	162	1536.27	91	1540.38	129	1542.15	108	1536.48	71	1546.40	101	1547.71	49	1548.85	20	1549.82	9.7	< 1520.00	
Monthly Average	453	160	1536.70	89	1541.21	127	1542.43	106	1537.31	70	1546.61	100	1547.96	49	1549.02	20	1549.99	9.5	1525.00	
Analytical ¹	Conc (mg/L)	Date	Conc ³ (mg/L)	Date	Conc (mg/L)	Date	Conc (mg/L)	Date	Conc (mg/L)	Date	Conc (mg/L)	Date	Conc (mg/L)	Date	Conc (mg/L)	Date	Conc (mg/L)	Date	Conc (mg/L)	Date
Perchlorate	14	12/3/2020	20	12/3/2020	5.8	12/3/2020	7.4	12/3/2020	2.2	12/3/2020	0.27	12/3/2020	0.0096	12/3/2020	0.0018	12/3/2020	1.4	12/3/2020	ND	12/3/2020
Hexavalent Chromium	0.0054	12/3/2020	0.00026 J	12/3/2020	ND	12/3/2020	0.0069	12/3/2020	ND	12/3/2020	ND	12/3/2020	ND	12/3/2020	ND	12/3/2020	ND	12/3/2020	ND	12/3/2020
Total Chromium	0.0026 J	12/3/2020	ND	12/3/2020	ND	12/3/2020	0.0048 J	12/3/2020	ND	12/3/2020	ND	12/3/2020	ND	12/3/2020	ND	12/3/2020	ND	12/3/2020	ND	12/3/2020

Notes:
 Flow reported as gpm is a daily average calculated from the totalizer reading.
 ND = Not detected above laboratory method detection limit (Cr(TR)=2.5 ug/L, Cr(VI) =0.20 ug/L).
 J = Result is less than the reporting limit but greater than or equal to the method detection limit and the concentration is an approximate value.
 1: Analytical results are reported from Eurofins TestAmerica.
 2: On 12/03, LS #1 and SWF offline intermittently due to power outage.
 3: Duplicates taken on 12/03 for well PC-99R2/R3; average of both values is presented and used for calculations.
 4: On 12/21, PC-120 and PC-133 offline intermittently due to maintenance.
 5: A "<" preceding the water elevation indicates the reported water level is below the transducer. Average monthly water elevation calculations include the transducer elevation in instances where the water level is below the transducer.

Nevada Environmental Response Trust Groundwater Extraction and Treatment System Enhanced Operational Metrics																	
Date	LS #3 Flow (gpm)	ART-1/1A		ART-2/2A		ART-3/3A		ART-4/4A		ART-9		ART-7A/7B		ART-8/8A		PC-150	
		Flow ⁴ (gpm)	Water Elevation (ft amsl)	Flow ⁵ (gpm)	Water Elevation (ft amsl)	Flow ⁴ (gpm)	Water Elevation (ft amsl)	Flow ⁴ (gpm)	Water Elevation (ft amsl)	Flow (gpm)	Water Elevation (ft amsl)	Flow (gpm)	Water Elevation (ft amsl)	Flow (gpm)	Water Elevation (ft amsl)	Flow ⁶ (gpm)	Water Elevation (ft amsl)
12/01/20	407	42	1584.23	152	1583.68	22	1585.17	4.2	1578.85	60	1576.32	19	1584.79	171	1583.64	1.5	1579.26
12/02/20	407	42	1584.20	151	1583.66	22	1585.15	3.5	1578.85	60	1576.32	19	1584.76	170	1583.62	1.5	1579.15
12/03/20 ¹	263	27	1586.18	98	1587.14	14	1588.46	2.8	1584.19	39	1585.77	13	1585.84	112	1587.16	1.5	1587.01
12/04/20	285	22	1577.47	108	1584.67	12	1576.72	2.8	1583.87	48	1576.34	15	1585.00	121	1584.62	1.5	1578.78
12/05/20	392	28	1577.51	153	1584.45	16	1576.72	3.5	1583.77	63	1576.34	19	1584.90	171	1584.40	1.5	1579.70
12/06/20	390	27	1577.50	153	1584.38	15	1576.74	4.2	1583.72	62	1576.35	20	1584.87	169	1584.33	1.5	1578.99
12/07/20	402	36	1584.67	153	1584.15	20	1585.52	4.2	1579.31	62	1576.32	20	1584.82	169	1584.06	1.5	1579.15
12/08/20	409	42	1584.58	153	1584.02	24	1585.43	4.2	1579.12	62	1576.32	19	1584.79	169	1583.95	1.5	1579.37
12/09/20	408	42	1584.51	154	1583.95	23	1585.37	3.5	1578.99	60	1576.32	19	1584.79	172	1583.89	1.5	1579.23
12/10/20	413	42	1584.44	151	1583.88	23	1585.31	4.2	1578.86	60	1576.35	19	1584.76	176	1583.82	1.5	1579.17
12/11/20	401	40	1584.39	150	1583.83	23	1585.27	4.2	1578.84	60	1576.34	19	1584.79	176	1583.78	1.5	1579.36
12/12/20	406	40	1584.32	149	1583.77	23	1585.23	3.5	1578.84	60	1576.35	19	1584.73	176	1583.72	1.5	1579.29
12/13/20	406	41	1584.31	149	1583.76	22	1585.22	4.2	1578.84	58	1576.30	19	1584.76	176	1583.71	1.5	1579.28
12/14/20	406	40	1584.26	149	1583.71	22	1585.18	4.2	1578.84	58	1576.31	19	1584.73	176	1583.66	1.5	1579.25
12/15/20	406	40	1584.23	149	1583.68	22	1585.16	3.5	1578.84	59	1576.34	19	1584.72	176	1583.64	1.5	1578.78
12/16/20	406	40	1584.21	149	1583.66	22	1585.15	4.2	1578.84	58	1576.31	19	1584.73	176	1583.62	1.5	1578.75
12/17/20 ³	399	40	1584.27	144	1583.74	22	1585.21	3.5	1583.13	58	1576.32	19	1584.72	172	1583.69	1.5	1579.11
12/18/20	410	40	1584.18	149	1583.63	22	1585.12	3.5	1578.85	58	1576.31	19	1584.72	176	1583.59	1.5	1578.67
12/19/20 ³	401	42	1584.19	147	1583.65	22	1585.14	3.5	1578.85	58	1577.99	18	1583.20	174	1583.61	1.5	1578.83
12/20/20	401	44	1584.38	141	1584.57	22	1585.21	4.2	1583.08	58	1577.68	19	1583.16	176	1583.78	1.5	1586.61
12/21/20 ³	381	42	1584.30	124	1583.77	22	1585.22	3.5	1578.85	56	1576.41	19	1584.66	169	1583.71	1.5	1579.08
12/22/20	407	44	1584.19	147	1583.65	22	1585.14	4.2	1578.85	57	1577.37	18	1584.63	176	1583.60	1.5	1578.62
12/23/20	411	44	1584.13	147	1583.59	22	1585.09	3.5	1578.84	56	1577.71	19	1584.62	176	1583.54	1.5	1578.75
12/24/20	414	44	1584.12	147	1583.58	22	1585.08	3.5	1578.85	57	1577.37	18	1584.62	176	1583.54	1.5	1578.69
12/25/20	414	44	1584.10	147	1583.55	22	1585.06	3.5	1578.85	56	1577.93	19	1584.65	176	1583.52	1.5	1578.73
12/26/20	412	44	1584.07	147	1583.53	22	1585.05	4.2	1578.85	57	1577.12	18	1584.61	176	1583.50	1.5	1578.68
12/27/20	413	44	1584.07	147	1583.53	22	1585.05	3.5	1578.85	56	1577.32	19	1584.62	176	1583.50	1.5	1578.74
12/28/20	413	44	1584.05	147	1583.51	22	1585.03	3.5	1578.85	57	1576.34	18	1584.61	176	1583.48	1.5	1578.67
12/29/20	415	44	1584.03	147	1583.49	22	1585.02	4.2	1578.85	56	1578.35	19	1584.61	176	1583.46	1.5	1578.62
12/30/20	417	44	1584.03	147	1583.49	22	1585.02	3.5	1578.85	56	1577.04	18	1584.62	176	1583.46	1.5	1578.62
12/31/20	415	44	1584.03	146	1583.49	22	1585.02	3.5	1578.85	56	1578.94	18	1584.58	175	1583.46	1.5	1578.63
Monthly Average	398	40	1583.65	145	1583.91	21	1584.46	3.7	1579.80	58	1577.13	19	1584.66	170	1583.84	1.5	1579.47
Analytical ¹	Conc (mg/L)	Date	Conc (mg/L)	Date	Conc (mg/L)	Date	Conc (mg/L)	Date	Conc (mg/L)	Date	Conc (mg/L)	Date	Conc (mg/L)	Date	Conc ⁷ (mg/L)	Date	
Perchlorate	27	12/3/2020	15	12/3/2020	190	12/3/2020	190	12/3/2020	170	12/3/2020	76	12/3/2020	96	12/3/2020	60	12/3/2020	
Hexavalent Chromium	ND	12/3/2020	0.0039	12/3/2020	0.29	12/3/2020	0.14	12/3/2020	0.62	12/3/2020	0.40	12/3/2020	0.075	12/3/2020	0.044	12/3/2020	
Total Chromium	ND	12/3/2020	ND	12/3/2020	0.31	12/3/2020	0.15	12/3/2020	0.62	12/3/2020	0.41	12/3/2020	0.068	12/3/2020	0.042	12/3/2020	

Notes:
 Flow reported as gpm is a daily average calculated from the totalizer reading.
 ND = Not detected above laboratory method detection limit (ClO₄ = 0.5 ug/L; ClO₃ = 10 ug/L; NO₃-N = 0.055 mg/L, Cr(VI) = 0.25 ug/L).
 ART-1, 2, 3, 4, 7B, and 8 have adjacent recovery wells, both of which can be used for extraction. The pumping well can be chosen manually or automatically, based on operational considerations. The wells with transducers are ART-1, -2, -3, -4, -7A, -8, -9, and PC-150.
 1: Analytical results are reported from Eurofins TestAmerica.
 2: On 12/03, LS #3 and AWF offline intermittently due to power outage.
 3: On 12/17, 12/19, and 12/21, LS #3 and AWF offline intermittently due to instrument error.
 4: On 12/05, ART-1A switched to ART-1, ART-4 switched to ART-4A, and ART-3A switched to ART-3 until 12/07.
 5: On 12/20, ART-2 offline and ART-4 switched to ART-4A briefly due to LS #3 instrument error.
 6: Conducted periodic bucket tests to confirm flow rates for PC-150. Average flow of 1.5 gpm determined from flow tests is presented for 12/01-12/31 flows and used for calculation purposes. Flow was steady throughout the month but the totalizer showed zero flow because totalizer units are 1,000 gallons.
 7: Duplicates taken on 12/03 for well PC-150; average of both values is presented and used for calculations.

Table 3 - Interceptor Well Field (IWF) Operational Metrics

Nevada Environmental Response Trust Groundwater Extraction and Treatment System Enhanced Operational Metrics																				
Date	I-AR		I-AA		I-AB		I-AC		I-AD		I-B		I-C		I-D		I-E		I-F	
	Flow ³ (gpm)	Water Elevation (ft amsl)	Flow (gpm)	Water Elevation (ft amsl)	Flow (gpm)	Water Elevation (ft amsl)	Flow (gpm)	Water Elevation (ft amsl)	Flow ⁴ (gpm)	Water Elevation (ft amsl)	Flow ⁵ (gpm)	Water Elevation (ft amsl)	Flow ⁶ (gpm)	Water Elevation (ft amsl)	Flow ⁷ (gpm)	Water Elevation (ft amsl)	Flow ⁸ (gpm)	Water Elevation (ft amsl)	Flow (gpm)	Water Elevation (ft amsl)
12/01/20	0.24	1719.69	0.99	1708.85	0.00	1720.27	0.00	1724.46	1.0	1720.74	0.32	1719.53	4.4	1711.80	1.4	1722.84	1.1	1719.37	4.2	1722.10
12/02/20	0.26	1719.11	0.99	1708.86	0.00	1720.25	0.00	1724.38	1.0	1720.73	0.34	1718.83	4.4	1711.90	1.4	1722.81	1.1	1719.36	4.2	1722.07
12/03/20	0.25	1719.44	0.97	1709.55	0.00	1720.24	0.00	1724.37	1.0	1720.75	0.37	1718.81	4.3	1711.96	1.4	1722.79	1.1	1719.39	4.2	1722.07
12/04/20	0.24	1719.66	0.98	1708.15	0.00	1720.20	0.00	1724.38	1.0	1720.81	0.36	1718.87	4.3	1711.70	1.3	1722.78	1.1	1719.39	4.2	1722.06
12/05/20 ²	0.23	1719.94	0.99	1708.70	0.00	1720.26	0.00	1724.46	1.0	1720.24	0.32	1719.93	4.1	1713.63	1.3	1722.77	1.1	1719.60	4.2	1722.05
12/06/20 ²	0.22	1720.03	0.98	1708.63	0.00	1720.28	0.00	1724.51	1.0	1720.46	0.28	1720.23	4.1	1712.94	1.3	1705.61	1.1	1719.43	4.2	1722.06
12/07/20 ²	0.24	1718.78	0.99	1708.58	0.00	1720.30	0.00	1724.54	1.1	1719.99	0.20	1720.34	4.0	1714.77	1.3	1705.61	1.1	1719.42	4.2	1722.04
12/08/20	0.24	1719.41	1.0	1707.55	0.03	1720.20	0.00	1724.51	1.1	1720.06	0.47	1713.44	4.0	1714.65	1.3	1705.61	1.1	1719.35	4.2	1722.02
12/09/20	0.27	1717.89	1.0	1707.56	0.00	1720.21	0.00	1728.18	1.0	1720.58	0.62	1713.24	4.0	1714.60	1.3	1722.56	1.1	1719.38	4.2	1722.00
12/10/20	0.27	1717.93	1.0	1707.55	0.00	1720.25	0.01	1728.67	1.0	1720.57	0.58	1715.04	4.2	1711.84	1.3	1722.53	1.1	1719.38	4.2	1721.95
12/11/20	0.28	1718.70	1.0	1707.55	0.00	1720.21	0.00	1728.39	1.0	1720.57	0.57	1714.20	4.2	1711.93	1.2	1722.53	1.1	1719.44	4.2	1721.93
12/12/20 ²	0.27	1718.28	1.0	1707.55	0.00	1720.25	0.00	1727.95	0.94	1720.83	0.43	1718.03	4.1	1712.12	1.2	1722.53	1.0	1719.31	4.2	1721.90
12/13/20 ²	0.14	1723.08	1.1	1708.55	0.00	1720.33	0.00	1727.84	1.0	1720.59	0.27	1719.98	4.2	1713.25	1.1	1722.56	1.0	1719.30	4.2	1721.94
12/14/20	0.13	1723.65	1.1	1707.56	0.00	1720.32	0.00	1727.67	1.1	1720.56	0.26	1719.99	4.2	1713.41	1.2	1722.51	1.1	1719.35	4.2	1721.89
12/15/20	0.11	1723.81	1.1	1706.57	0.00	1720.31	0.00	1728.27	1.0	1720.89	0.26	1720.00	4.2	1713.33	1.2	1722.50	1.1	1719.36	4.2	1721.88
12/16/20	0.11	1723.64	1.0	1707.59	0.00	1720.16	0.00	1728.54	0.94	1720.86	0.29	1719.28	4.2	1713.58	1.2	1722.50	1.1	1719.42	4.2	1721.88
12/17/20 ²	0.13	1723.80	1.0	1707.56	0.00	1720.19	0.00	1728.00	0.91	1721.13	0.26	1720.60	4.0	1714.81	1.1	1722.51	0.85	1720.72	4.1	1721.91
12/18/20	0.17	1723.37	1.1	1707.56	0.00	1720.15	0.00	1727.65	0.94	1720.89	0.18	1720.13	3.8	1714.66	1.2	1722.48	0.70	1720.75	4.2	1721.85
12/19/20	0.16	1723.46	1.1	1707.57	0.00	1720.13	0.00	1727.53	0.94	1720.87	0.21	1719.72	3.8	1714.72	1.2	1722.47	0.70	1720.77	4.2	1721.83
12/20/20	0.23	1723.44	1.1	1707.58	0.00	1720.11	0.0	1727.48	0.95	1720.81	0.25	1719.59	3.8	1714.63	1.2	1722.48	0.70	1720.74	4.2	1721.83
12/21/20	0.09	1723.40	1.1	1707.58	0.00	1720.10	0.00	1727.42	0.94	1720.94	0.22	1719.64	3.7	1714.58	1.2	1722.49	0.70	1720.71	4.2	1721.82
12/22/20 ²	0.15	1723.53	0.97	1708.44	0.00	1720.05	0.00	1721.37	0.91	1721.00	0.37	1717.91	3.6	1714.60	1.1	1722.49	0.68	1720.70	3.8	1721.81
12/23/20 ²	0.17	1723.54	0.93	1710.34	0.00	1720.12	0.00	1727.26	0.92	1722.39	0.24	1720.70	3.7	1715.67	1.2	1722.51	0.74	1720.62	3.7	1721.91
12/24/20 ²	0.16	1723.59	0.93	1709.98	0.00	1720.02	0.00	1727.31	0.92	1722.09	0.52	1714.75	3.7	1715.95	1.1	1722.53	0.72	1720.80	3.8	1721.91
12/25/20 ²	0.15	1723.48	0.97	1707.55	0.00	1720.14	0.00	1727.32	0.84	1720.96	0.27	1719.45	3.5	1715.02	1.1	1722.53	0.78	1720.59	3.8	1721.85
12/26/20	0.19	1723.46	0.99	1707.55	0.00	1720.14	0.00	1727.24	0.94	1720.88	0.24	1719.23	3.8	1715.00	1.2	1722.51	0.70	1720.69	3.9	1721.81
12/27/20	0.16	1723.47	1.0	1707.55	0.00	1720.18	0.00	1727.17	0.94	1720.71	0.24	1719.46	3.8	1715.14	1.2	1722.53	0.70	1720.75	3.8	1721.83
12/28/20	0.16	1723.43	0.98	1707.57	0.00	1720.17	0.00	1727.13	0.94	1720.67	0.28	1719.20	3.8	1715.15	1.2	1722.49	0.70	1720.72	3.8	1721.78
12/29/20	0.16	1723.31	0.98	1707.56	0.00	1720.16	0.00	1726.98	0.92	1721.31	0.29	1719.11	3.7	1715.14	1.2	1722.49	0.70	1720.74	3.8	1721.77
12/30/20	0.15	1723.41	0.98	1707.55	0.00	1720.16	0.00	1726.98	0.92	1721.46	0.29	1718.95	3.8	1715.27	1.2	1722.52	0.70	1720.83	3.8	1721.81
12/31/20	0.16	1723.46	0.98	1707.55	0.00	1720.15	0.00	1726.96	0.94	1721.38	0.31	1718.79	3.7	1715.27	1.2	1722.49	0.70	1720.81	3.8	1721.77
Monthly Average	0.19	1721.78	1.0	1708.03	0.00	1720.19	0.00	1726.61	0.96	1720.86	0.33	1718.61	4.0	1713.97	1.2	1720.92	0.90	1720.04	4.1	1721.91
Analytical	Conc (mg/L)	Date	Conc (mg/L)	Date	Conc (mg/L)	Date	Conc (mg/L)	Date	Conc (mg/L)	Date	Conc (mg/L)	Date	Conc (mg/L)	Date	Conc (mg/L)	Date	Conc (mg/L)	Date	Conc (mg/L)	Date
Perchlorate	470	12/8/2020	51	12/8/2020	180	12/8/2020	310	12/15/2020	160	12/9/2020	450	12/8/2020	440	12/8/2020	600	12/8/2020	330	12/8/2020	460	12/8/2020
Hexavalent Chromium	0.65	12/8/2020	0.055	12/8/2020	0.0083	12/8/2020	1.7	12/15/2020	1.7	12/9/2020	0.45	12/8/2020	3.0	12/8/2020	4.5	12/8/2020	5.5	12/8/2020	11	12/8/2020
Total Chromium	11	12/8/2020	0.064	12/8/2020	0.028	12/8/2020	1.8	12/15/2020	1.8	12/9/2020	0.49	12/8/2020	3.3	12/8/2020	4.6	12/8/2020	5.6	12/8/2020	12	12/8/2020

- Notes:
- Flow reported as gpm is a daily average calculated from the totalizer reading.
 - F1 = MS and/or MSD Recovery is outside acceptance limits.
 - 1: Analytical results are reported from Eurofins TestAmerica.
 - 2: On 12/05, 12/06, 12/07, 12/12, 12/13, 12/17, 12/22, 12/23, 12/24, and 12/25 IWF offline intermittently due to instrument error.
 - 3: On 12/17, I-AR offline briefly due to maintenance.
 - 4: On 12/29, I-AD, I-J, I-K and I-Z offline intermittently due to maintenance.
 - 5: On 12/22, I-B offline briefly due to maintenance.
 - 6: On 12/08, I-B, I-M, I-N, and I-S adjusted to meet flow target as directed by the Trust.
 - 7: On 12/31, I-C, I-L, I-M, I-N and I-S adjusted to meet flow target as directed by the Trust.
 - 8: On 12/06, I-D transducer offline due to maintenance.

Table 3 - Interceptor Well Field (IWF) Operational Metrics

Nevada Environmental Response Trust Groundwater Extraction and Treatment System Enhanced Operational Metrics																				
Date	I-G		I-H		I-I		I-J		I-K		I-L		I-M		I-N		I-O		I-P	
	Flow ⁶ (gpm)	Water Elevation (ft amsl)	Flow (gpm)	Water Elevation (ft amsl)	Flow (gpm)	Water Elevation (ft amsl)	Flow ⁴ (gpm)	Water Elevation (ft amsl)	Flow ⁴ (gpm)	Water Elevation (ft amsl)	Flow ⁷ (gpm)	Water Elevation (ft amsl)	Flow ^{6,7} (gpm)	Water Elevation (ft amsl)	Flow ^{6,7} (gpm)	Water Elevation (ft amsl)	Flow (gpm)	Water Elevation (ft amsl)	Flow ¹¹ (gpm)	Water Elevation (ft amsl)
12/01/20	0.09	1723.13	1.2	1722.13	4.9	1723.17	7.2	1712.42	3.9	1708.17	1.3	1721.24	1.9	1722.61	3.0	1721.36	0.40	1723.14	1.9	1723.10
12/02/20	0.09	1723.10	1.2	1722.10	4.9	1723.14	7.2	1712.52	3.9	1708.17	1.3	1721.15	1.9	1722.57	3.0	1721.34	0.39	1723.11	1.8	1723.08
12/03/20	0.09	1723.09	1.1	1722.14	4.9	1723.13	7.2	1712.43	3.9	1708.16	1.3	1721.10	1.9	1722.56	3.0	1721.33	0.40	1723.09	1.8	1723.06
12/04/20	0.09	1723.07	1.1	1722.12	4.9	1723.13	7.3	1712.40	3.9	1708.16	1.3	1721.07	1.9	1722.54	3.0	1721.31	0.42	1723.08	1.9	1723.03
12/05/20 ²	0.09	1723.05	1.1	1722.19	4.9	1723.12	7.2	1712.43	3.9	1708.22	1.3	1721.30	1.9	1722.54	2.9	1721.35	0.42	1723.08	1.8	1723.08
12/06/20 ²	0.21	1722.47	1.0	1722.30	4.9	1723.14	7.2	1712.36	3.9	1708.18	1.3	1721.52	1.9	1722.56	2.7	1721.41	0.45	1723.10	1.7	1723.15
12/07/20 ²	0.25	1722.56	1.0	1722.28	4.9	1723.12	7.0	1712.46	3.9	1708.18	1.3	1721.61	1.9	1722.56	2.7	1721.41	0.45	1723.09	1.6	1723.11
12/08/20	0.23	1722.52	1.00	1722.30	4.9	1723.12	7.0	1712.38	3.9	1708.18	1.3	1721.17	2.0	1722.38	3.0	1721.20	0.44	1723.09	1.6	1723.11
12/09/20	0.24	1722.43	1.00	1722.32	4.9	1723.15	7.0	1712.22	3.9	1708.12	1.3	1721.00	2.1	1722.37	3.3	1721.18	0.43	1723.13	1.7	1723.12
12/10/20	0.25	1722.35	1.00	1722.32	5.1	1723.13	7.0	1712.28	3.9	1708.14	1.3	1720.97	2.1	1722.34	3.3	1721.14	0.43	1723.12	1.7	1723.11
12/11/20	0.25	1722.33	0.97	1722.29	5.1	1723.21	7.0	1712.34	3.9	1708.14	1.3	1720.87	2.1	1722.33	3.3	1721.13	0.42	1723.08	1.8	1723.07
12/12/20 ²	0.11	1722.60	0.93	1722.33	5.1	1723.09	7.0	1712.62	3.8	1708.15	1.3	1721.07	2.1	1722.31	3.0	1721.16	0.44	1723.07	1.6	1723.10
12/13/20 ²	0.11	1722.87	0.93	1722.37	5.1	1723.12	7.3	1712.31	3.8	1708.15	1.3	1721.30	2.1	1722.35	3.0	1721.23	0.44	1723.05	1.6	1723.13
12/14/20	0.09	1722.85	0.94	1722.36	5.1	1723.08	7.5	1712.42	3.9	1708.16	1.3	1721.33	2.1	1722.31	3.0	1721.19	0.47	1723.02	1.4	1723.08
12/15/20	0.09	1722.84	0.90	1722.37	5.1	1723.06	7.5	1712.48	3.9	1708.16	1.3	1721.33	2.1	1722.30	3.0	1721.18	0.47	1722.99	1.8	1722.96
12/16/20	0.09	1722.86	0.88	1722.36	5.1	1723.07	7.5	1712.35	3.9	1708.15	1.3	1720.77	2.1	1722.28	2.8	1721.18	0.47	1722.98	1.9	1722.96
12/17/20 ²	0.09	1722.85	0.86	1722.45	5.0	1723.13	7.2	1712.54	3.8	1708.15	1.2	1720.96	2.0	1722.32	2.7	1721.27	0.47	1722.99	1.8	1723.01
12/18/20	0.21	1722.08	0.82	1722.41	5.1	1723.04	7.5	1712.76	3.9	1708.14	1.4	1720.97	2.1	1722.30	2.8	1721.20	0.60	1722.95	1.9	1722.96
12/19/20	0.30	1722.01	0.82	1722.42	4.7	1723.03	7.5	1712.69	3.9	1708.15	1.4	1720.89	2.1	1722.30	2.8	1721.19	0.56	1722.94	1.9	1722.95
12/20/20	0.30	1721.99	0.82	1722.42	4.7	1723.04	7.5	1712.56	3.9	1708.13	1.4	1720.84	1.9	1722.31	2.8	1721.19	0.56	1722.94	1.9	1722.97
12/21/20	0.29	1721.97	0.82	1722.42	4.7	1723.05	7.5	1712.44	3.9	1708.15	1.4	1720.83	1.9	1722.31	2.8	1721.18	0.59	1722.95	1.8	1722.99
12/22/20 ²	0.26	1722.00	0.80	1722.38	4.5	1723.06	7.3	1712.63	3.8	1708.13	1.4	1720.98	1.8	1722.33	2.7	1721.21	0.36	1723.02	1.8	1722.99
12/23/20 ²	0.26	1722.34	0.85	1722.33	4.6	1723.09	7.4	1715.71	3.8	1708.14	1.4	1721.28	1.8	1722.34	2.8	1721.32	0.33	1723.01	1.7	1723.00
12/24/20 ²	0.15	1722.46	0.86	1722.38	4.6	1723.11	7.3	1717.16	3.7	1710.21	1.2	1721.51	1.8	1722.39	2.8	1721.30	0.34	1723.03	1.6	1723.04
12/25/20 ²	0.14	1722.47	0.90	1722.42	4.5	1723.10	7.1	1712.48	3.7	1708.16	0.93	1721.93	1.8	1722.42	2.4	1721.32	0.42	1723.01	1.6	1723.01
12/26/20	0.15	1722.45	0.94	1722.38	4.7	1723.06	7.5	1712.46	3.8	1708.15	0.94	1721.95	1.9	1722.40	2.3	1721.29	0.46	1722.98	1.8	1722.96
12/27/20	0.15	1722.46	0.94	1722.38	4.7	1723.06	7.5	1712.34	3.8	1708.14	0.94	1721.99	1.9	1722.42	2.3	1721.29	0.37	1722.98	1.9	1722.96
12/28/20	0.15	1722.42	0.78	1722.42	4.7	1723.03	7.5	1712.47	3.8	1708.14	0.94	1722.00	1.9	1722.39	2.3	1721.25	0.35	1722.96	1.9	1722.94
12/29/20	0.15	1722.41	0.70	1722.40	4.7	1723.00	7.5	1712.61	3.7	1708.17	0.94	1722.01	1.9	1722.37	2.3	1721.24	0.35	1722.93	1.9	1722.92
12/30/20	0.15	1722.43	0.70	1722.43	4.7	1723.02	7.5	1712.37	3.8	1708.13	0.94	1722.02	1.9	1722.40	2.3	1721.27	0.35	1722.94	1.9	1722.93
12/31/20	0.15	1722.40	0.70	1722.41	4.7	1723.00	7.5	1712.43	3.8	1708.16	0.78	1722.10	1.9	1722.37	2.3	1721.23	0.35	1722.92	1.9	1722.91
Monthly Average	0.17	1722.54	0.92	1722.33	4.9	1723.09	7.3	1712.71	3.8	1708.22	1.2	1721.32	2.0	1722.40	2.8	1721.25	0.43	1723.02	1.8	1723.03
Analytical	Conc (mg/L)	Date	Conc (mg/L)	Date	Conc ¹⁰ (mg/L)	Date	Conc (mg/L)	Date	Conc (mg/L)	Date	Conc (mg/L)	Date	Conc (mg/L)	Date	Conc (mg/L)	Date	Conc (mg/L)	Date	Conc (mg/L)	Date
Perchlorate	940	12/9/2020	740	12/9/2020	650	12/9/2020	260	12/9/2020	210	12/9/2020	220	12/8/2020	300	12/8/2020	360	12/8/2020	590	12/9/2020	730	12/9/2020
Hexavalent Chromium	13	12/9/2020	12	12/9/2020	7.8	12/9/2020	4.0	12/9/2020	2.4	12/9/2020	1.3	12/8/2020	5.4	12/8/2020	6.3	12/8/2020	12	12/9/2020	12	12/9/2020
Total Chromium	15	12/9/2020	14	12/9/2020	8.5	12/9/2020	4.3	12/9/2020	2.6	12/9/2020	1.4	12/8/2020	5.4	12/8/2020	9.6	12/8/2020	13	12/9/2020	14	12/9/2020

- Notes:
- Flow reported as gpm is a daily average calculated from the totalizer reading.
 - B = Compound was found in the blank and sample.
 - 1: Analytical results are reported from Eurofins TestAmerica.
 - 2: On 12/05, 12/06, 12/07, 12/12, 12/13, 12/17, 12/22, 12/23, 12/24, and 12/25 IWF offline intermittently due to instrument error.
 - 4: On 12/29, I-AD, I-J, I-K and I-Z offline intermittently due to maintenance.
 - 6: On 12/08, I-B, I-M, I-N, and I-S adjusted to meet flow target as directed by the Trust.
 - 7: On 12/31, I-C, I-L, I-M, I-N and I-S adjusted to meet flow target as directed by the Trust.
 - 9: On 12/18, I-G offline briefly due to maintenance.
 - 10: Duplicates taken on 12/09 for well I-I; average of both values is presented and used for calculations.
 - 11: On 12/15, I-P and I-S adjusted to meet flow target as directed by the Trust.

Nevada Environmental Response Trust Groundwater Extraction and Treatment System Enhanced Operational Metrics																				
Date	I-Q		I-R		I-S		I-T		I-U		I-V		I-W		I-X		I-Y		I-Z	
	Flow (gpm)	Water Elevation (ft amsl)	Flow ¹² (gpm)	Water Elevation (ft amsl)	Flow ^{6,7,11} (gpm)	Water Elevation (ft amsl)	Flow (gpm)	Water Elevation (ft amsl)	Flow (gpm)	Water Elevation (ft amsl)	Flow (gpm)	Water Elevation (ft amsl)	Flow ¹² (gpm)	Water Elevation (ft amsl)	Flow (gpm)	Water Elevation (ft amsl)	Flow (gpm)	Water Elevation (ft amsl)	Flow ⁴ (gpm)	Water Elevation (ft amsl)
12/01/20	0.27	1721.77	1.0	1722.27	2.1	1722.20	0.67	1717.20	0.66	1716.83	4.4	1722.29	0.70	1723.20	3.7	1718.79	1.2	1717.22	8.4	1714.92
12/02/20	0.27	1721.73	1.2	1721.92	2.0	1722.16	0.67	1717.11	0.65	1716.85	4.4	1722.24	0.69	1723.19	3.7	1718.76	1.2	1717.18	8.4	1714.83
12/03/20	0.27	1721.73	0.93	1721.91	2.0	1722.15	0.66	1717.12	0.68	1715.91	4.4	1722.22	0.68	1723.16	3.7	1718.76	1.2	1717.18	8.4	1714.89
12/04/20	0.27	1721.70	0.93	1721.78	2.0	1722.13	0.66	1717.12	0.65	1716.62	4.4	1722.20	0.66	1723.17	3.6	1718.74	1.2	1717.10	8.4	1714.81
12/05/20 ²	0.19	1721.91	0.98	1722.39	1.5	1722.37	0.66	1717.12	0.64	1716.59	4.4	1722.19	0.55	1723.31	3.6	1718.78	1.2	1717.24	8.4	1714.82
12/06/20 ²	0.15	1722.17	0.95	1722.91	1.1	1722.53	0.66	1716.97	0.71	1715.42	4.4	1722.23	0.44	1723.45	3.6	1718.80	1.2	1717.35	8.4	1714.89
12/07/20 ²	0.13	1721.88	0.97	1722.76	0.99	1722.60	0.67	1716.73	0.77	1713.74	4.4	1722.19	0.46	1723.44	3.7	1718.80	1.2	1717.39	8.4	1714.82
12/08/20	0.18	1721.85	0.99	1725.30	1.6	1722.15	0.67	1716.66	0.80	1715.32	4.5	1722.19	0.46	1723.45	3.7	1718.75	1.3	1717.00	8.4	1714.79
12/09/20	0.18	1721.85	0.99	1724.95	2.0	1722.07	0.67	1716.54	0.73	1715.38	4.5	1722.23	0.37	1723.65	3.8	1718.72	1.3	1716.88	8.4	1714.86
12/10/20	0.19	1721.79	0.99	1724.89	2.0	1722.05	0.69	1716.25	0.73	1715.27	4.4	1722.21	0.26	1723.64	3.8	1718.67	1.3	1716.90	8.4	1714.77
12/11/20	0.19	1721.78	1.1	1723.41	2.0	1722.04	0.70	1716.21	0.65	1716.63	4.2	1722.18	0.42	1723.25	3.8	1718.66	1.3	1716.68	8.4	1714.71
12/12/20 ²	0.16	1721.83	1.3	1723.40	1.6	1722.21	0.70	1716.25	0.67	1716.55	4.2	1722.13	0.76	1723.09	3.7	1718.66	1.3	1716.95	8.3	1714.70
12/13/20 ²	0.16	1721.87	1.3	1723.04	1.3	1722.35	0.70	1716.28	0.67	1716.46	4.2	1722.17	0.76	1722.93	3.7	1718.69	1.3	1717.07	8.4	1714.92
12/14/20	0.15	1721.82	1.3	1723.10	1.4	1722.37	0.70	1716.15	0.64	1716.54	4.2	1722.12	0.82	1722.87	3.8	1718.63	1.3	1717.11	8.4	1714.71
12/15/20	0.15	1721.82	1.3	1723.16	1.4	1722.39	0.70	1716.12	0.64	1716.36	4.2	1722.08	0.82	1722.80	3.7	1718.62	1.3	1717.15	8.4	1714.65
12/16/20	0.12	1722.21	1.3	1723.02	2.6	1721.90	0.70	1716.10	0.66	1715.82	4.2	1722.07	0.82	1722.79	3.8	1718.60	1.3	1716.81	8.4	1714.67
12/17/20 ²	0.11	1721.79	1.2	1722.72	1.9	1722.12	0.68	1714.67	0.68	1715.41	4.1	1722.16	0.74	1723.15	3.6	1718.70	1.2	1717.31	8.1	1715.22
12/18/20	0.19	1721.70	1.2	1722.73	1.4	1722.13	0.70	1714.73	0.64	1717.01	4.2	1722.05	0.62	1723.11	3.8	1718.63	1.2	1717.26	8.4	1714.65
12/19/20	0.18	1721.69	1.3	1722.53	1.4	1722.11	0.70	1714.60	0.59	1716.68	4.2	1722.02	0.59	1723.11	3.8	1718.60	1.2	1717.05	8.4	1714.60
12/20/20	0.18	1721.68	1.3	1722.48	1.4	1722.09	0.70	1714.55	0.59	1716.90	4.2	1722.03	0.59	1723.10	3.7	1718.60	1.2	1717.01	8.4	1714.62
12/21/20	0.18	1721.66	1.2	1722.44	1.5	1722.09	0.70	1714.47	0.59	1717.19	4.3	1722.05	0.59	1723.12	3.8	1718.59	1.2	1717.97	8.4	1714.63
12/22/20 ²	0.23	1721.49	1.1	1722.74	1.2	1722.20	0.68	1714.42	0.66	1716.00	4.5	1722.08	0.55	1723.17	3.6	1718.62	1.1	1717.23	8.5	1714.73
12/23/20 ²	0.19	1721.55	1.2	1722.84	1.2	1722.24	0.69	1716.81	0.66	1717.82	4.6	1722.12	0.49	1723.38	3.7	1718.75	1.2	1718.13	7.7	1715.38
12/24/20 ²	0.23	1721.55	1.1	1722.59	1.1	1722.29	0.69	1716.10	0.58	1718.06	4.6	1722.15	0.61	1723.73	3.7	1718.79	1.1	1718.33	9.1	1715.50
12/25/20 ²	0.17	1721.53	1.1	1722.52	1.1	1722.38	0.67	1714.96	0.62	1716.14	4.5	1722.13	0.60	1723.04	3.6	1718.65	1.1	1717.67	8.9	1715.10
12/26/20	0.23	1721.48	1.2	1722.51	1.2	1722.40	0.70	1714.80	0.70	1715.44	4.7	1722.07	0.70	1722.97	3.7	1718.60	1.2	1717.73	9.4	1714.83
12/27/20	0.23	1721.52	1.2	1722.53	1.2	1722.44	0.70	1714.76	0.70	1715.93	4.7	1722.06	0.70	1722.96	3.8	1718.60	1.2	1717.82	9.3	1714.76
12/28/20	0.21	1721.49	1.2	1722.55	1.2	1722.45	0.70	1714.64	0.66	1716.29	4.7	1722.02	0.70	1722.94	3.8	1718.56	1.2	1717.79	9.2	1714.62
12/29/20	0.22	1721.47	1.2	1722.58	1.2	1722.45	0.70	1714.57	0.67	1716.44	4.7	1721.96	0.70	1722.91	3.8	1718.54	1.2	1717.84	8.8	1714.45
12/30/20	0.23	1721.50	1.2	1722.58	0.97	1722.47	0.70	1714.68	0.59	1716.54	4.7	1721.98	0.70	1722.91	3.8	1718.57	1.2	1717.82	8.6	1714.56
12/31/20	0.23	1721.47	1.2	1722.57	0.94	1722.47	0.70	1714.64	0.56	1717.82	4.7	1721.96	0.70	1722.90	3.7	1718.51	1.2	1717.82	8.6	1714.46
Monthly Average	0.19	1721.72	1.1	1722.87	1.5	1722.26	0.69	1715.78	0.66	1716.32	4.4	1722.12	0.62	1723.16	3.7	1718.67	1.2	1717.32	8.5	1714.80
Analytical	Conc (mg/L)	Date	Conc (mg/L)	Date	Conc (mg/L)	Date	Conc (mg/L)	Date	Conc (mg/L)	Date	Conc (mg/L)	Date	Conc (mg/L)	Date	Conc (mg/L)	Date	Conc (mg/L)	Date	Conc (mg/L)	Date
Perchlorate	650	12/9/2020	590	12/8/2020	230	12/8/2020	840	12/9/2020	920	12/9/2020	650	12/9/2020	660	12/9/2020	520	12/8/2020	340	12/8/2020	510	12/9/2020
Hexavalent Chromium	12	12/9/2020	1.0	12/8/2020	1.8	12/8/2020	14	12/9/2020	14	12/9/2020	9.4	12/9/2020	11	12/9/2020	8.0	12/8/2020	1.2	12/8/2020	7.3	12/9/2020
Total Chromium	14	12/9/2020	1.1	12/8/2020	1.9	12/8/2020	16	12/9/2020	15	12/9/2020	11	12/9/2020	13	12/9/2020	8.8	12/8/2020	1.3	12/8/2020	7.9	12/9/2020

Notes:
 Flow reported as gpm is a daily average calculated from the totalizer reading.
 B = Compound was found in the blank and sample.
 1: Analytical results are reported from Eurofins TestAmerica.
 2: On 12/05, 12/06, 12/07, 12/12, 12/13, 12/17, 12/22, 12/23, 12/24, and 12/25 IWF offline intermittently due to instrument error.
 4: On 12/29, I-AD, I-J, I-K and I-Z offline intermittently due to maintenance.
 6: On 12/08, I-B, I-M, I-N, and I-S adjusted to meet flow target as directed by the Trust.
 7: On 12/31, I-C, I-L, I-M, I-N and I-S adjusted to meet flow target as directed by the Trust.
 11: On 12/15, I-P and I-S adjusted to meet flow target as directed by the Trust.
 12: On 12/11, I-R and I-W adjusted to meet flow target as directed by the Trust.

Table 4 - Treatment Plant Operational Metrics

Nevada Environmental Response Trust Groundwater Extraction and Treatment System Enhanced Operational Metrics																
Date	LS #2	GWTP Effluent ¹				GW-11 Influent ¹				FBR Plant Influent ¹						
	Flow (gpm)	Flow (gpm)	TA - Cr (TR) (mg/L)	TA - Cr (VI) (mg/L)	TA - ClO ₂ (mg/L)	Flow ³ (gpm)	TA - Cr (TR) (mg/L)	TA - Cr (VI) (mg/L)	TA - ClO ₂ (mg/L)	Flow ^{3 4} (gpm)	TA - ClO ₂ (mg/L)	ETI - ClO ₂ (mg/L)	TA - ClO ₂ (mg/L)	TA - NO ₂ - N (mg/L)	TA - Cr (TR) (mg/L)	TA - Cr (VI) (mg/L)
12/01/20	953	62				0.00				1,020		52				
12/02/20	944	62	0.35	ND	450	0.00				1,020		55				
12/03/20	607	62				0.00				909		55				
12/04/20	666	62				0.00				878		46				
12/05/20	935	62				0.00				1,001	61	52				
12/06/20	932	62				0.00				1,050		55				
12/07/20	945	62				0.00				1,031		51	130	9.3	0.029	0.032
12/08/20	953	63				0.00				1,016		51				
12/09/20	951	62	0.45	ND	410	5.2	0.072	0.030	57	1,044		46				
12/10/20	964	62				0.00				1,048		52				
12/11/20	938	62				0.00				1,001		49				
12/12/20	951	62				0.00				1,014	42	43				
12/13/20	951	62				0.00				1,013		48				
12/14/20	953	63				0.00				1,015		51		9.2	0.029	0.030
12/15/20	958	62				0.00				1,021		40				
12/16/20	949	62	0.16	ND	420	0.00				1,034		38				
12/17/20	941	61				0.00				1,078		51				
12/18/20	948	62				0.00				1,029		51				
12/19/20	947	62				0.00				1,043	76	55				
12/20/20	945	62				0.00				1,010		44				
12/21/20	926	63	0.86	ND	400	0.00				1,020		54		9.7	0.0041	0.020
12/22/20	951	61				0.00				1,037		50				
12/23/20	951	61				0.00				1,044		51				
12/24/20	952	61				0.00				1,053		52				
12/25/20	952	61				0.00				1,066		47				
12/26/20	915	60				0.00				1,008	57	52				
12/27/20	938	62				0.00				1,028		50				
12/28/20	933	61				0.00				1,080		47		9.1	0.019	0.019
12/29/20	933	62				0.00				1,091		50				
12/30/20	931	61	0.69	ND	580	0.00				1,054		53				
12/31/20	922	61				0.00				1,095		53				
Monthly Average ²	924	62	0.52	ND	449	0.17	0.072	0.030	57	1,027	59	50	130	9.3	0.021	0.026

Notes:

Flow reported as gpm is a daily average calculated from the totalizer reading. The only exceptions are the instantaneous flow readings recorded for the 1st and 2nd Stage FBR flows.
 ND = Not detected above laboratory method detection limit (ClO₂ = 0.5 ug/L; ClO₃ = 10 ug/L; NO₂-N = 0.055 mg/L, Cr(VI) = 0.25 ug/L).

B7 = Target analyte detected in method blank at or above method reporting limit. Concentration found in the sample was 10 times above the concentration found in the blank.

1: ETI = Envirogen internal process control data, TA = Eurofins TestAmerica data.

2: All average concentrations reported are monthly flow weighted averages.

3: Flows bypassed GW-11 Influent and FBR Plant Influent totalizers from 12/01 to 12/31 due to FBR plant influent strainers clogging, except for monthly sampling and maintenance.

4: From 12/01 to 12/31, the FBR Plant Influent Flow was estimated by summing flows for LS #2, GWTP Effluent, and GW-11 Effluent.

Table 4 - Treatment Plant Operational Metrics

Nevada Environmental Response Trust Groundwater Extraction and Treatment System Enhanced Operational Metrics														
Date	1st Stage FBR ³			2nd Stage FBR ³			FBR Plant Effluent ¹							
	Flow (gpm)	pH (s.u.)	ORP (mV)	Flow (gpm)	pH (s.u.)	ORP (mV)	Flow ⁶ (gpm)	TA - ClO ₄ (mg/L)	ETI - ClO ₄ (mg/L)	TA - ClO ₃ (mg/L)	TA - Cr (TR) (mg/L)	TA - Cr (VI) (mg/L)	TA - NO ₃ - N (mg/L)	ETI - Turbidity (NTU)
12/01/20	1,069	6.6	-417	951	6.6	-385	802		ND					21
12/02/20	1,053	6.6	-408	900	6.6	-389	1,080		ND					17
12/03/20	536	6.4	-188	678	6.5	-311	928		ND					28
12/04/20	1,070	6.6	-403	858	6.6	-363	507		ND					32
12/05/20	1,050	6.6	-422	948	6.6	-376	1,031	ND						25
12/06/20	1,086	6.7	-425	876	6.6	-382	1,084		ND					28
12/07/20	1,065	6.6	-334	923	6.5	-355	1,080		ND	0.032 J	0.0025 J	ND	ND	22
12/08/20	981	6.6	-289	919	6.5	-332	1,062		ND					25
12/09/20	1,073	6.6	-294	899	6.6	-331	1,092		ND					40
12/10/20	1,065	6.6	-314	918	6.6	-333	1,078		ND					34
12/11/20	1,089	6.6	-302	969	6.6	-329	1,067		ND					25
12/12/20	1,067	6.6	-318	968	6.6	-333	1,064	0.087	ND					32
12/13/20	1,058	6.7	-368	933	6.6	-339	1,065		ND					29
12/14/20	1,052	6.7	-337	898	6.6	-337	1,064		ND		0.0066	ND	0.036	29
12/15/20	1,068	6.7	-396	779	6.6	-346	1,055		ND					21
12/16/20	1,107	6.7	-413	897	6.6	-373	1,080		ND					20
12/17/20	1,097	6.8	-387	961	6.7	-363	1,102		ND					43
12/18/20	1,084	6.7	-386	883	6.6	-360	1,090		ND					29
12/19/20	1,085	6.7	-404	1,003	6.6	-375	1,086	ND	ND					33
12/20/20	1,036	6.4	-388	942	6.6	-385	1,074		ND					28
12/21/20	1,037	6.4	-346	926	6.6	-390	1,066		ND		0.014	ND	ND	9
12/22/20	1,102	6.5	-327	976	6.6	-369	1,104		ND					25
12/23/20	1,097	6.7	-364	941	6.6	-376	1,117		ND					33
12/24/20	1,096	6.7	-406	957	6.7	-393	1,119		ND					40
12/25/20	1,100	6.7	-403	870	6.6	-398	843		ND					29
12/26/20	1,089	6.7	-398	929	6.6	-400	1,124	ND	ND					27
12/27/20	1,097	6.7	-394	972	6.6	-403	1,114		ND					17
12/28/20	1,146	6.7	-409	1,002	6.7	-410	1,124		ND		0.0039 J	ND	ND	35
12/29/20	1,093	6.7	-407	976	6.6	-410	1,118		ND					28
12/30/20	1,129	6.7	-387	1,006	6.6	-379	832		ND					28
12/31/20	1,121	6.7	-400	995	6.6	-393	1,125		ND					36
Monthly Average ²	1,061	6.6	-372	924	6.6	-369	1,038	0.020	ND	0.032	0.0065	ND	0.0084	28

Notes:

Flow reported as gpm is a daily average calculated from the totalizer reading. The only exceptions are the instantaneous flow readings recorded for the 1st and 2nd Stage FBR flows.

ND = Not detected above laboratory method detection limit (ClO₄ = 0.5 ug/L; ClO₃ = 10 ug/L; NO₃-N = 0.055 mg/L, Cr(VI) = 0.25 ug/L).

J = Result is less than the reporting limit but greater than or equal to the method detection limit and the concentration is an approximate value.

B = Compound was found in the blank and sample.

1: ETI = Envirogen internal process control data, TA = Eurofins TestAmerica data.

2: All average concentrations reported are monthly flow weighted averages.

5: For 1st and 2nd stage FBRs, flow measurements are collected from the influent lines and pH and ORP samples are collected from the recycle lines.

6: FBR Plant Effluent represents effluent discharged to Las Vegas Wash. While this may represent the entirety of the FBR Plant effluent, any diversions to GW-11 are subtracted from the original effluent flow.

GW-11 Level Monitoring ¹		
Date	Field Measurement (ft)	Volume (MG)
12/15/20	31.7	34.4
12/31/20	31.7	34.4

GW-11 Leak Detection Monitoring				
Date	Amount Pumped ² (gallons)			
	NW Corner	NE Corner	SW Corner	SE Corner
12/09/20	0	0	627	0
12/23/20	0	0	652	0

GW-11 Composite Sample ³		
Analytes	Concentration	Units
Perchlorate	5.7	mg/L
Chlorate	5.0	mg/L
Ammonia as N	0.069	mg/L
Total Phosphorus	0.57	mg/L
Total Dissolved Solids (TDS)	12,000	mg/L
Total Suspended Solids (TSS)	60	mg/L
pH	8.8 HF	s.u.
Calcium	550	mg/L
Iron	1.0	mg/L
Chromium (total)	0.022	mg/L
Chromium VI	ND	mg/L
Chloride	4,000	mg/L
Nitrate as N	ND	mg/L
Sulfate	3,500	mg/L

Notes:

HF = Field parameter with a holding time of 15 minutes. Test performed by laboratory at client's request.

J = Result is less than the reporting limit but greater than or equal to the method detection limit and the concentration is an approximate value.

ND = Not detected above laboratory method detection limit (NH₃-N= 0.1 mg/L; Total P = 0.025 ug/L; Cr(VI) = 0.25 ug/L).

1: A transducer installed along the eastern berm provides water pressure measurements that are correlated to elevations for calculation of water depths. Results from a December 2018 bathymetric survey of the pond will be used to identify adjustment to the procedure, if necessary.

2: Pumping occurs over three consecutive days. The total amount pumped over the three day period is listed with the last day pumping occurred.

3: GW-11 Corner Composite Sample is collected quarterly, most recent sampling results are presented. Sampled on: November 12, 2020.

Nevada Environmental Response Trust Groundwater Extraction and Treatment System Enhanced Operational Metrics						
Date	Flow ¹ (gpm)	FBR Influent Concentration			Influent Function Load ³ (lbs/day)	6 Month Rolling Average (lbs/day)
		ClO ₄ ² (mg/L)	NO ₃ as N (mg/L)	ClO ₃ (mg/L)		
Jan 2020	1,050	73	9	120	529	757
Feb 2020	1,060	54	10	120	502	730
Mar 2020	1,073	66	10	130	556	713
Apr 2020	1,078	77	11	100	525	658
May 2020	1,065	86	11	120	582	598
June 2020	1,019	98	12	120	592	548
July 2020	1,035	66	11	91	458	536
Aug 2020	1,040	59	9	100	444	526
Sep 2020	1,038	59	9	120	492	516
Oct 2020	1,029	64	9	94	441	501
Nov 2020	1,037	56	10	100	451	480
Dec 2020	1,027	59	9	130	507	465

Notes:

Concentrations and flow are presented as monthly average.

1: Flow used in loading calculation is average monthly FBR effluent flow to be consistent with historical loading calculations.

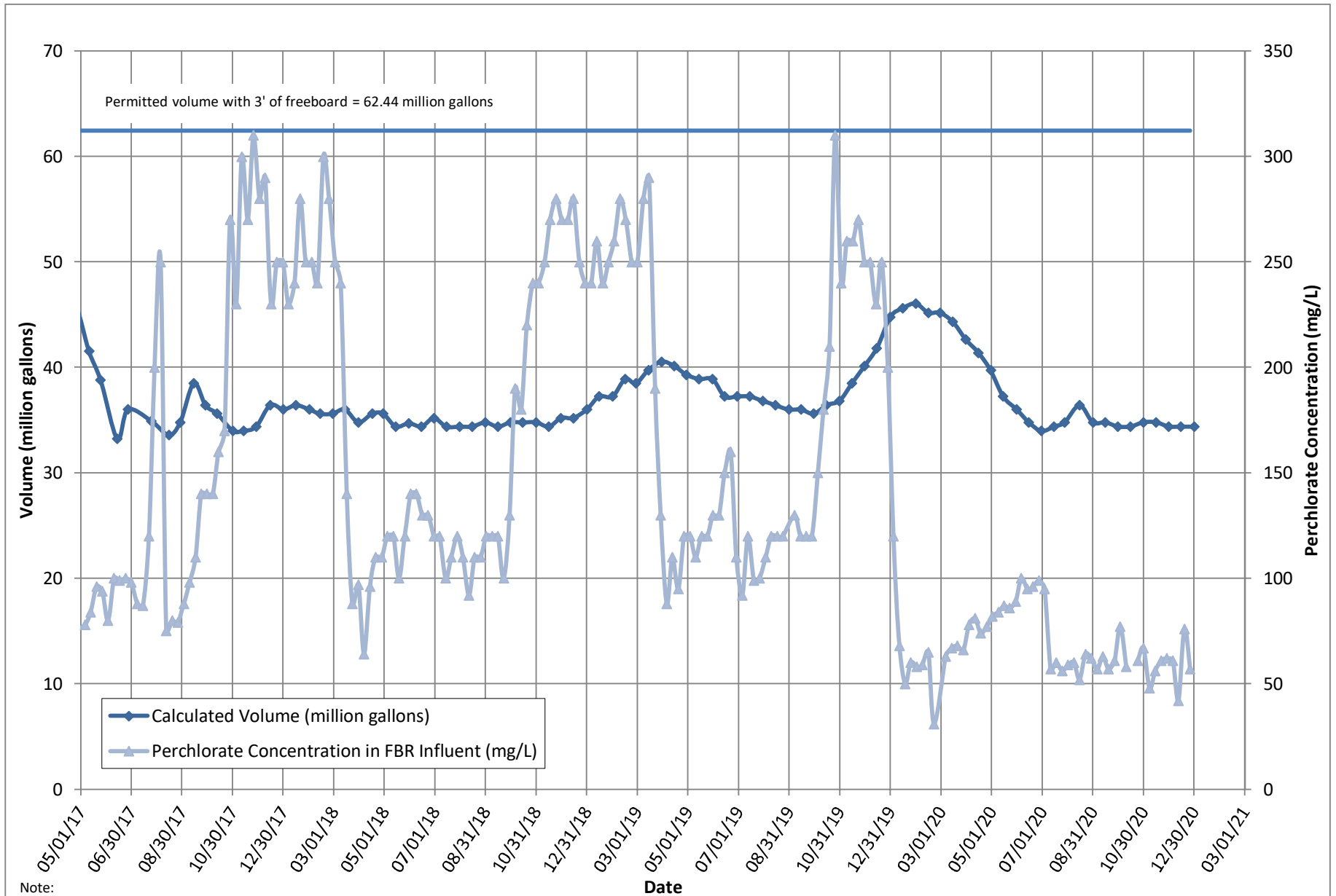
2: The AP-5 wash water feed rate was increased on October 1, 2019 in accordance with the higher seasonal ammonia permit limits beginning October 1. The AP-5 wash water feed rate was decreased in March 2020 to prepare for the lower seasonal ammonia permit limits beginning April 1. AP-5 sediment mixing and solids washing activities were completed on January 4, 2020. AP-5 tank processing was completed on 7/15/20.

3: FBR loading calculated as $[(0.9 \cdot \text{NO}_3 \text{ as N} + 0.17 \cdot \text{ClO}_3 + 0.18 \cdot \text{ClO}_4) \cdot \text{Flow} \cdot 1440 / 1000000 \cdot 8.34]$.

Nevada Environmental Response Trust Groundwater Extraction and Treatment System Enhanced Operational Metrics																
Date	E1-1		E1-2		E1-3		E2-1		E2-2		E2-3		E2-4		E2-5	
	Flow ^{4,5} (gpm)	Water Elevation (ft amsl)	Flow (gpm)	Water Elevation (ft amsl)	Flow ⁶ (gpm)	Water Elevation (ft amsl)	Flow ⁷ (gpm)	Water Elevation (ft amsl)	Flow (gpm)	Water Elevation (ft amsl)	Flow (gpm)	Water Elevation (ft amsl)	Flow (gpm)	Water Elevation (ft amsl)	Flow (gpm)	Water Elevation (ft amsl)
12/01/20	2.3	1711.31	0.99	1711.24	1.0	1711.14	0.87	1716.22	0.84	1717.56	0.73	1717.87	1.3	1716.93	0.47	1717.03
12/02/20	2.3	1711.08	0.99	1711.11	1.1	1711.24	0.89	1717.65	0.95	1721.00	0.82	1722.93	1.3	1716.56	0.41	1717.54
12/03/20	2.3	1711.51	1.0	1711.11	1.1	1711.02	0.90	1718.07	0.84	1720.02	1.3	1723.05	1.2	1718.26	0.55	1720.37
12/04/20	2.3	1711.34	1.0	1711.25	1.1	1711.19	0.92	1717.83	0.82	1716.13	1.8	1715.66	1.1	1717.63	0.59	1715.15
12/05/20	2.3	1711.43	1.0	1711.86	0.97	1711.87	0.94	1717.60	1.3	1715.89	1.5	1714.54	1.2	1717.99	0.52	1714.30
12/06/20	2.2	1711.86	1.0	1712.31	0.91	1711.41	0.92	1717.27	1.2	1716.37	1.5	1716.77	1.2	1717.26	0.55	1716.01
12/07/20	2.2	1711.32	0.95	1712.01	0.42	1711.12	0.91	1714.61	1.2	1717.52	1.4	1717.78	1.2	1717.06	0.51	1716.55
12/08/20	1.2	1712.22	1.1	1711.18	0.92	1710.97	0.94	1716.32	1.3	1715.77	1.4	1716.33	1.2	1717.80	0.56	1715.70
12/09/20	0.01	1717.17	0.93	1710.75	0.73	1714.55	1.2	1715.35	1.3	1714.11	1.4	1714.38	1.3	1716.90	0.57	1713.30
12/10/20	0.84	1716.84	1.2	1714.11	0.87	1713.88	0.40	1716.43	0.73	1714.89	0.78	1716.53	0.75	1716.90	0.32	1715.14
12/11/20	0.84	1719.39	1.2	1711.38	0.83	1714.40	0.75	1719.21	1.3	1718.01	1.2	1718.81	1.3	1723.06	0.28	1721.01
12/12/20	0.84	1716.85	1.2	1711.86	0.85	1714.07	0.76	1718.06	1.3	1717.45	1.2	1715.82	1.3	1720.35	0.32	1717.73
12/13/20 ²	0.84	1723.44	1.1	1712.60	0.80	1718.49	0.91	1720.25	1.2	1715.83	1.2	1718.90	1.4	1718.22	0.42	1719.08
12/14/20 ²	0.84	1723.54	0.37	1714.36	0.46	1720.15	0.80	1717.30	1.2	1716.14	1.4	1718.88	1.1	1716.85	0.39	1714.86
12/15/20	1.1	1723.31	1.0	1712.16	0.76	1711.62	0.90	1717.22	1.2	1715.75	1.1	1719.38	1.5	1717.76	0.38	1716.98
12/16/20	0.93	1710.21	0.75	1709.77	0.61	1710.64	0.82	1719.49	1.2	1717.59	1.2	1720.07	1.5	1718.19	0.36	1717.75
12/17/20	1.8	1710.56	0.76	1710.72	0.62	1711.32	0.84	1717.21	0.90	1716.29	1.3	1716.52	1.6	1714.43	0.38	1716.35
12/18/20	0.42	1709.91	0.74	1709.44	0.66	1709.82	0.72	1717.77	1.4	1715.31	1.1	1715.68	1.5	1713.74	0.34	1714.82
12/19/20	0.41	1710.43	0.84	1709.59	0.56	1709.82	0.91	1717.26	1.2	1716.18	1.2	1717.45	1.6	1713.39	0.34	1714.95
12/20/20	0.41	1710.43	0.80	1709.59	0.63	1709.41	0.88	1716.77	1.2	1715.51	1.2	1716.88	1.6	1715.29	0.34	1715.67
12/21/20	0.41	1710.72	0.81	1711.24	0.63	1709.80	0.88	1716.97	1.3	1716.00	1.3	1717.20	1.7	1714.94	0.31	1714.87
12/22/20	0.43	1711.48	0.85	1709.37	0.66	1711.37	0.85	1717.37	1.0	1715.27	1.0	1716.23	1.4	1714.56	0.18	1715.25
12/23/20	0.41	1714.36	0.85	1710.52	0.65	1710.89	0.37	1716.94	1.1	1716.06	1.0	1717.58	1.6	1714.78	0.22	1719.08
12/24/20	0.42	1712.40	0.84	1709.58	0.65	1710.33	0.84	1721.26	1.1	1717.65	1.1	1719.59	1.6	1713.95	0.32	1719.95
12/25/20 ³	0.45	1712.38	0.85	1709.50	0.65	1710.18	0.48	1717.10	0.65	1715.93	0.61	1717.58	0.94	1713.39	0.19	1717.09
12/26/20	0.44	1714.16	0.83	1710.92	0.66	1712.40	0.61	1716.86	1.2	1715.30	0.84	1717.86	1.7	1713.19	0.31	1717.24
12/27/20	0.45	1712.66	0.84	1711.18	0.65	1711.06	0.61	1716.27	1.2	1715.87	0.84	1717.80	1.7	1714.11	0.32	1717.50
12/28/20	0.44	1712.32	0.84	1711.61	0.67	1710.87	0.92	1718.82	1.1	1716.35	1.5	1721.13	1.6	1714.90	0.47	1719.37
12/29/20	0.41	1712.58	0.82	1709.89	0.65	1710.41	0.85	1716.58	1.1	1716.67	1.4	1717.03	1.6	1713.56	0.46	1717.45
12/30/20	0.43	1712.28	0.83	1710.71	0.65	1710.57	0.90	1716.04	1.1	1716.53	1.5	1716.47	1.6	1713.83	0.46	1718.07
12/31/20	0.44	1711.74	0.83	1709.75	0.66	1710.41	0.88	1711.01	1.1	1715.87	1.4	1713.64	1.6	1713.92	0.46	1710.20
Monthly Average	1.0	1713.59	0.91	1711.06	0.74	1711.82	0.82	1717.19	1.1	1716.48	1.2	1717.62	1.4	1716.12	0.40	1716.65
Analytical ¹	Conc (mg/L)	Date	Conc (mg/L)	Date	Conc (mg/L)	Date	Conc ⁸ (mg/L)	Date	Conc (mg/L)	Date	Conc (mg/L)	Date	Conc (mg/L)	Date	Conc (mg/L)	Date
Perchlorate	540	12/2/2020	1,300	12/2/2020	440	12/2/2020	94	12/2/2020	350	12/2/2020	710	12/2/2020	970	12/2/2020	1,200	12/2/2020
Hexavalent Chromium	0.062	12/2/2020	0.40	12/2/2020	0.64	12/2/2020	0.027	12/2/2020	0.024	12/2/2020	0.043	12/2/2020	0.060	12/2/2020	0.10	12/2/2020
Total Chromium	0.063	12/2/2020	0.41	12/2/2020	0.65	12/2/2020	0.029	12/2/2020	0.031	12/2/2020	0.055	12/2/2020	0.060	12/2/2020	0.18	12/2/2020

Notes:
 Flow reported as gpm is a daily average calculated from the totalizer reading.
 The flow rate at individual wells is adjusted daily to maintain the water level in the wells above the pump.
 H = Sample was prepped or analyzed beyond the specified holding time
 1: Analytical results are reported from Eurofins TestAmerica.
 2: On 12/13 and 12/14, AP Area wells offline intermittently.
 3: On 12/25, AP Area wells offline briefly.
 4: On 12/09 and 12/10, E1-1 offline intermittently due to maintenance.
 5: On 12/14, E1-1 totalizer replaced.
 6: On 12/07, E1-3 offline briefly due to instrument error.
 7: On 12/24, E2-1 offline intermittently due to instrument error.
 8: Duplicates taken on 12/02 for well E2-1; average of both values is presented and used for calculations.

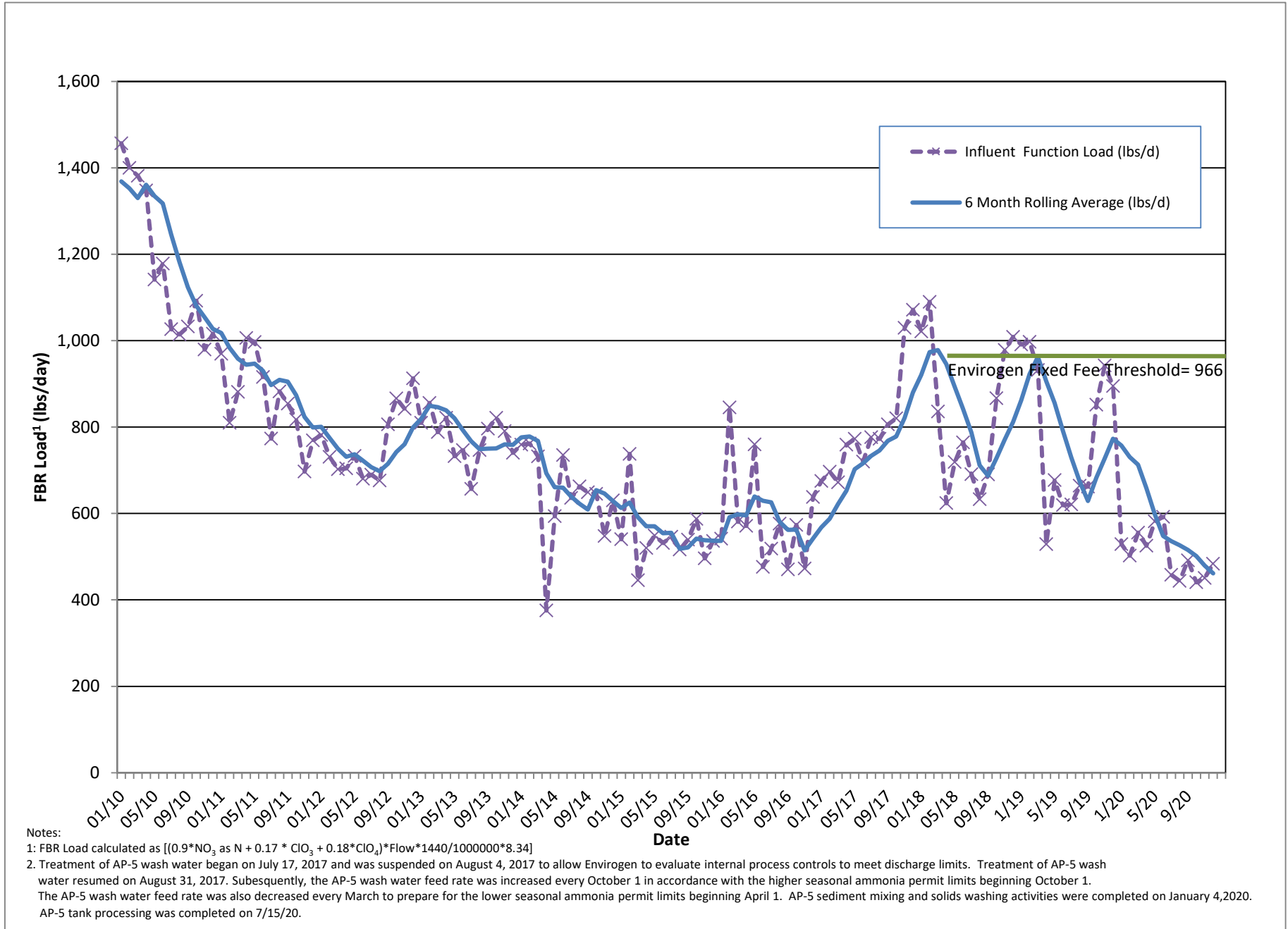
Figure 1 - GW-11 Pond Volume and FBR Influent Perchlorate Concentration



Note:

1. Treatment of AP-5 wash water began on July 17, 2017 and was suspended on August 4, 2017 to allow Envirogen to evaluate internal process controls to meet discharge limits. Treatment of AP-5 wash water resumed on August 31, 2017. The AP-5 wash water feed rate was increased on October 1, 2019 in accordance with the higher seasonal ammonia permit limits beginning October 1. The AP-5 wash water feed rate was decreased in March 2019 to prepare for the lower seasonal ammonia permit limits beginning April 1. AP-5 tank processing was completed on 7/15/20.

Figure 2 - FBR Equivalent Loading Calculation



Notes:

- 1: FBR Load calculated as $[(0.9 \cdot \text{NO}_3 \text{ as N} + 0.17 \cdot \text{ClO}_3 + 0.18 \cdot \text{ClO}_2) \cdot \text{Flow} \cdot 1440 / 1000000] \cdot 8.34$
2. Treatment of AP-5 wash water began on July 17, 2017 and was suspended on August 4, 2017 to allow Envirogen to evaluate internal process controls to meet discharge limits. Treatment of AP-5 wash water resumed on August 31, 2017. Subsequently, the AP-5 wash water feed rate was increased every October 1 in accordance with the higher seasonal ammonia permit limits beginning October 1. The AP-5 wash water feed rate was also decreased every March to prepare for the lower seasonal ammonia permit limits beginning April 1. AP-5 sediment mixing and solids washing activities were completed on January 4, 2020. AP-5 tank processing was completed on 7/15/20.