

Table 1 - Seep Well Field (SWF) Operational Metrics

Nevada Environmental Response Trust I Groundwater Extraction and Treatment System I Enhanced Operational Metrics																			
Date	LS #1 Flow ³ (gpm)	PC-116R (East Well)		PC-99R2/R3 (Center Well)		PC-115R (West Well)		PC-117		PC-118		PC-119		PC-120		PC-121		PC-133	
		Flow (gpm)	Water Elevation (ft amsl)	Flow (gpm)	Water Elevation (ft amsl)	Flow (gpm)	Water Elevation (ft amsl)	Flow (gpm)	Water Elevation (ft amsl)	Flow (gpm)	Water Elevation (ft amsl)	Flow (gpm)	Water Elevation (ft amsl)	Flow (gpm)	Water Elevation (ft amsl)	Flow (gpm)	Water Elevation (ft amsl)	Flow (gpm)	Water Elevation (ft amsl)
12/01/19	688	168	1538.01	92	1541.83	132	1542.54	111	1538.61	72	1547.23	104	1548.90	51	1550.06	20	1551.17	11	1522.36
12/02/19 ²	689	168	1538.09	92	1542.81	131	1542.60	111	1538.66	72	1547.30	103	1548.99	51	1550.14	20	1551.26	10	1522.30
12/03/19	689	150	< 1520.00	83	1542.71	117	1542.84	99	1539.22	65	1547.87	92	1549.46	47	1552.50	19	1552.78	9.7	1522.32
12/04/19	676	165	1538.53	92	1542.14	129	1542.88	109	1539.09	71	1547.53	101	1549.24	51	1550.40	19	1551.50	9.7	1524.17
12/05/19	679	124	1538.99	69	1542.34	96	1543.11	82	1539.35	54	1547.74	76	1549.45	38	1550.60	15	1551.69	7.6	1524.72
12/06/19	650	167	1538.84	93	1541.92	130	1543.07	110	1539.31	72	1547.77	103	1549.46	49	1550.62	19	1551.72	10	1524.63
12/07/19	644	167	1538.84	94	1542.08	132	1543.13	111	1539.34	72	1547.82	104	1549.52	53	1550.68	21	1551.78	10	1524.71
12/08/19	644	168	1538.82	93	1541.90	131	1543.16	110	1539.34	72	1547.85	103	1549.54	51	1550.70	20	1551.81	10	1524.63
12/09/19 ²	644	168	1538.82	93	1542.20	132	1543.17	111	1539.36	72	1547.88	103	1549.56	52	1550.72	21	1551.83	10	1524.58
12/10/19	643	167	1538.83	92	1542.36	130	1543.20	110	1539.35	72	1547.89	102	1549.59	50	1550.76	20	1551.87	10	1524.62
12/11/19	650	168	1538.84	94	1542.07	132	1543.22	111	1539.38	73	1547.92	104	1549.61	51	1550.78	20	1551.90	10	1524.57
12/12/19	639	168	1538.86	93	1541.98	132	1543.28	111	1539.39	72	1547.92	103	1549.63	51	1550.80	20	1551.92	10	1524.61
12/13/19	638	167	1538.87	94	1541.63	131	1543.26	110	1539.41	72	1547.96	103	1549.67	51	1550.84	19	1551.95	10	1524.63
12/14/19	641	168	1538.86	93	1542.13	132	1543.28	110	1539.43	72	1547.96	103	1549.68	51	1550.84	20	1551.96	10	1524.64
12/15/19	641	167	1538.83	94	1542.18	131	1543.24	111	1539.41	72	1547.94	103	1549.63	51	1550.79	20	1551.90	10	1524.58
12/16/19 ²	641	168	1538.81	93	1542.35	132	1543.21	111	1539.37	72	1547.92	103	1549.60	51	1550.76	20	1551.87	10	1524.54
12/17/19	638	167	1538.82	93	1542.08	131	1543.24	111	1539.38	72	1547.97	103	1549.62	51	1550.78	20	1551.89	10	1524.59
12/18/19	638	147	1538.80	93	1541.56	132	1543.21	110	1539.37	72	1547.95	103	1549.61	51	1550.77	19	1551.88	10	1524.60
12/19/19	636	187	1538.75	92	1542.17	130	1543.17	110	1539.33	72	1547.90	102	1549.56	50	1550.72	20	1551.83	10	1524.52
12/20/19	637	167	1538.72	93	1542.53	131	1543.18	110	1539.31	71	1547.89	103	1549.55	51	1550.70	20	1551.81	10	1524.56
12/21/19	638	168	1538.73	93	1542.17	132	1543.19	111	1539.33	72	1547.91	103	1549.55	51	1550.70	20	1551.81	10	1524.64
12/22/19	642	163	1538.72	90	1542.04	128	1543.19	107	1539.32	71	1547.89	101	1549.55	49	1550.71	20	1551.82	9.9	1524.54
12/23/19 ²	640	165	1538.73	92	1542.34	130	1543.24	109	1539.34	72	1547.90	102	1549.57	50	1550.73	20	1551.84	10	1524.56
12/24/19	640	174	1538.73	97	1542.17	136	1543.24	115	1539.33	75	1547.92	107	1549.59	53	1550.75	21	1551.87	10	1524.57
12/25/19	636	164	1538.72	91	1542.29	129	1543.25	108	1539.33	71	1547.96	101	1549.60	50	1550.76	20	1551.88	10	1524.48
12/26/19	637	167	1538.76	92	1542.71	131	1543.28	110	1539.37	72	1547.98	103	1549.64	51	1550.80	19	1551.92	10	1524.54
12/27/19	649	167	1538.93	93	1542.32	130	1543.31	111	1539.45	72	1548.08	103	1549.66	51	1550.83	20	1551.94	10	1524.77
12/28/19	653	169	1538.90	94	1542.35	133	1543.29	112	1539.44	73	1548.01	105	1549.66	51	1550.83	20	1551.94	11	1524.80
12/29/19	663	166	1542.48	93	1543.32	131	1538.90	110	1539.44	71	1548.03	102	1549.68	50	1550.85	20	1551.97	10	1524.77
12/30/19 ²	658	168	1542.50	94	1543.31	132	1538.88	111	1539.43	72	1548.05	103	1549.68	51	1550.84	20	1551.96	11	1524.77
12/31/19	650	169	1538.87	94	1542.03	133	1543.34	111	1539.43	72	1548.05	103	1549.67	51	1550.84	20	1551.95	11	1524.75
Monthly Average	650	165	1538.39	92	1542.26	130	1542.87	109	1539.31	71	1547.87	102	1549.54	50	1550.76	20	1551.85	10	1524.39
Analytical ¹		Conc (mg/L)	Date	Conc (mg/L)	Date	Conc (mg/L)	Date	Conc (mg/L)	Date	Conc (mg/L)	Date	Conc (mg/L)	Date	Conc (mg/L)	Date	Conc (mg/L)	Date	Conc (mg/L)	Date
Perchlorate		11	12/4/2019	13	12/4/2019	8.4	12/4/2019	6.2	12/4/2019	3.5	12/4/2019	0.49	12/4/2019	0.016	12/4/2019	ND	12/4/2019	1.4	12/4/2019
Hexavalent Chromium		0.0041	12/4/2019	0.00034	12/4/2019	ND	12/4/2019	0.0057	12/4/2019	ND	12/4/2019	ND	12/4/2019	ND	12/4/2019	ND	12/4/2019	ND	12/4/2019
Total Chromium		0.0050	12/4/2019	ND	12/4/2019	ND	12/4/2019	0.0060	12/4/2019	ND	12/4/2019	ND	12/4/2019	ND	12/4/2019	ND	12/4/2019	ND	12/4/2019

Notes:

- Flow reported as gpm is a daily average calculated from the totalizer reading.
- ND = Not detected above laboratory method detection limit (Cr(TR)=2.5 ug/L, Cr(VI) =0.20 ug/L).
- J = Result is less than the reporting limit but greater than or equal to the method detection limit and the concentration is an approximate value.
- 1: Analytical results are reported from TestAmerica.
- 2: On 12/02, 12/09, 12/16, 12/23 and 12/30, the LS #1 and SWF totalizers were reset. Instantaneous flow rate at the time of the water level measurement was used for these dates.
- 3: From 12/03 to 12/04, communication to LS #1 was lost briefly due to instrument error.
- 4: Duplicates taken on 12/04 for well PC-118; average of both values is presented and used for calculations.

Nevada Environmental Response Trust Groundwater Extraction and Treatment System Enhanced Operational Metrics																		
Date	LS #3 Flow ³ (gpm)	ART-1/1A		ART-2/2A		ART-3/3A		ART-4/4A		ART-9		ART-7A/7B		ART-8/8A		PC-150		
		Flow ⁴ (gpm)	Water Elevation (ft amsl)	Flow (gpm)	Water Elevation (ft amsl)	Flow (gpm)	Water Elevation (ft amsl)	Flow (gpm)	Water Elevation (ft amsl)	Flow ⁴ (gpm)	Water Elevation ^{6,7} (ft amsl)	Flow (gpm)	Water Elevation ^{6,7} (ft amsl)	Flow (gpm)	Water Elevation (ft amsl)	Flow ⁵ (gpm)	Water Elevation (ft amsl)	
12/01/19	408	39	1583.40	146	1583.01	20	1581.23	2.8	1578.81	59	1582.47	18	1584.83	176	1583.08	1.5	1578.74	
12/02/19 ²	408	38	1583.44	147	1583.05	20	1581.26	3.1	1578.81	58	1582.53	19	1584.83	176	1583.12	1.5	1578.62	
12/03/19	408	34	1584.37	131	1585.50	18	1585.79	2.8	1582.99	51	1585.09	16	1585.44	150	1585.49	1.5	1586.09	
12/04/19	407	39	1583.88	141	1583.55	22	1584.25	3.5	1578.78	56	1582.70	19	1584.95	167	1583.56	1.5	1579.34	
12/05/19	408	37	1584.14	104	1583.82	17	1584.48	2.8	1578.78	56	1582.87	17	1585.06	118	1583.80	1.5	1579.68	
12/06/19	401	37	1577.37	150	1583.89	22	1584.46	3.5	1578.78	64	1582.84	19	1585.03	171	1583.82	1.5	1579.64	
12/07/19	391	37	1577.41	150	1583.95	22	1584.50	3.5	1578.78	63	< 1575.00	19	< 1578.00	172	1583.87	1.5	1579.48	
12/08/19	401	37	1584.22	149	1583.80	22	1584.44	4.2	1578.78	63	1582.84	19	1585.09	171	1583.76	1.5	1579.15	
12/09/19 ²	396	37	1584.33	150	1583.85	22	1584.47	3.8	1578.78	63	1582.90	19	1585.09	171	1583.81	1.5	1579.48	
12/10/19	400	42	1584.36	150	1583.88	23	1584.50	4.1	1578.78	63	1582.91	20	1585.12	171	1583.82	1.5	1578.98	
12/11/19	399	42	1584.38	150	1583.89	23	1584.52	3.5	1578.78	64	< 1575.00	20	< 1578.00	171	1583.84	1.5	1579.42	
12/12/19	400	42	1584.41	151	1583.92	22	1584.54	4.2	1578.78	64	< 1575.00	20	< 1578.00	172	1583.87	1.5	1579.18	
12/13/19	401	42	1584.44	150	1583.96	23	1584.56	3.5	1578.78	63	< 1575.00	20	< 1578.00	171	1583.90	1.5	1579.60	
12/14/19	401	42	1584.47	151	1583.98	23	1584.58	4.2	1578.78	63	< 1575.00	20	< 1578.00	169	1583.92	1.5	1579.72	
12/15/19	401	42	1584.46	151	1583.97	24	1584.58	3.5	1578.78	63	< 1575.00	20	< 1578.00	169	1583.91	1.5	1579.50	
12/16/19 ²	401	42	1584.47	151	1583.98	23	1584.59	3.8	1578.78	63	< 1575.00	20	< 1578.00	169	1583.92	1.5	1579.55	
12/17/19	401	42	1584.49	151	1584.01	23	1584.61	4.2	1578.78	63	< 1575.00	20	< 1578.00	170	1583.95	1.5	1579.54	
12/18/19	401	42	1584.52	151	1584.03	23	1584.62	3.5	1578.78	64	1583.12	20	1585.27	170	1583.97	1.5	1579.04	
12/19/19	400	42	1584.51	150	1584.03	23	1584.63	4.1	1578.78	63	1583.15	20	1585.30	170	1583.97	1.5	1579.17	
12/20/19	402	42	1584.54	151	1584.05	23	1584.64	4.2	1578.78	63	1583.18	20	1585.30	170	1583.99	1.5	1578.83	
12/21/19	403	42	1584.56	152	1584.07	23	1584.66	3.5	1578.78	63	1583.21	20	1585.34	169	1584.01	1.5	1579.73	
12/22/19	403	42	1584.57	151	1584.09	23	1584.67	4.2	1578.78	63	1583.21	20	1585.33	169	1584.03	1.5	1579.09	
12/23/19 ²	403	42	1584.58	151	1584.10	23	1584.68	3.9	1578.78	63	1583.18	20	1585.33	169	1584.04	1.5	1579.81	
12/24/19	401	42	1584.60	151	1584.12	23	1584.69	4.2	1578.77	63	1583.21	20	1585.34	170	1584.05	1.5	1579.71	
12/25/19	401	42	1584.61	151	1584.13	23	1584.70	4.1	1578.78	63	1583.23	20	1585.37	170	1584.06	1.5	1579.23	
12/26/19	401	42	1584.62	150	1584.15	24	1584.71	4.2	1578.80	63	1583.23	20	1585.43	170	1584.08	1.5	1579.56	
12/27/19	402	42	1584.63	150	1584.16	23	1584.71	3.5	1583.30	63	1583.28	20	1585.37	169	1584.08	1.5	1579.81	
12/28/19	403	42	1584.64	150	1584.17	24	1584.72	4.2	1583.32	63	1583.25	20	1585.43	168	1584.09	1.5	1579.22	
12/29/19	403	42	1584.67	150	1584.20	23	1584.74	3.5	1583.35	63	1583.34	20	1585.45	169	1584.12	1.5	1579.45	
12/30/19 ²	403	42	1584.69	150	1584.22	23	1584.76	3.8	1583.36	63	1583.30	20	1585.43	169	1584.13	1.5	1579.46	
12/31/19	402	42	1584.70	151	1584.24	24	1584.77	4.2	1583.38	64	1583.31	20	1585.43	170	1584.15	1.5	1578.83	
Monthly Average	402	41	1583.95	148	1583.99	22	1584.42	3.7	1579.65	62	1581.04	20	1583.37	168	1583.94	1.5	1579.57	
Analytical ¹	Conc (mg/L)		Date	Conc (mg/L)		Date	Conc (mg/L)		Date	Conc (mg/L)		Date	Conc (mg/L)		Date	Conc (mg/L)		Date
Perchlorate	22	12/3/2019	9.9	12/3/2019	180	12/3/2019	120	12/3/2019	90	12/3/2019	180	12/3/2019	90	12/3/2019	71	12/3/2019	55	12/3/2019
Hexavalent Chromium	ND	12/3/2019	0.0053	12/3/2019	0.31	12/3/2019	0.15	12/3/2019	0.61	12/3/2019	0.50	12/3/2019	0.078	12/3/2019	0.048	12/3/2019		
Total Chromium	ND	12/3/2019	0.0049	12/3/2019	0.33	12/3/2019	0.16	12/3/2019	0.59	12/3/2019	0.55	12/3/2019	0.082	12/3/2019	0.056	12/3/2019		

Notes:
 Flow reported as gpm is a daily average calculated from the totalizer reading.
 ND = Not detected above laboratory method detection limit (ClO₂ = 0.5 ug/L; ClO₃ = 10 ug/L; NO₃-N = 0.055 mg/L, Cr(VI) = 0.25 ug/L).
 J = Result is less than the reporting limit but greater than or equal to the method detection limit and the concentration is an approximate value.
 ART-1, 2, 3, 4, 7B, and 8 have adjacent recovery wells, both of which can be used for extraction. The pumping well can be chosen manually or automatically, based on operational considerations. The wells with transducers are ART-1, -2, -3, -4, -7A, -8, -9, and PC-150.
 1: Analytical results are reported from TestAmerica.
 2: On 12/02, 12/09, 12/16, 12/23 and 12/30, the LS #3 and AWF totalizers were reset. Instantaneous flow rate at the time of the water level measurement was used for these dates.
 3: From 12/03 to 12/04, communication to LS #3 was lost briefly due to instrument error.
 4: From 12/05 to 12/10, flow averages used for ART-1A and ART-9 due to instrument error.
 5: Duplicates taken on 12/03 for well ART-2/2A; average of both values is presented and used for calculations.
 6: From 12/11 to 12/17, ART-7B and ART-9 transducers were offline due to communication issues.
 7: A "c" preceding the water elevation indicates the reported water level is below the transducer. Average monthly water elevation calculations include the transducer elevation in instances where the water level is below the transducer.
 8: Conducted periodic bucket tests to confirm flow rates for PC-150. Average flow of 1.5 gpm determined from flow tests is presented for 12/01-12/31 flows and used for calculation purposes. Flow was steady throughout the month but the totalizer showed zero flow because totalizer units are 1,000 gallons.

Table 3 - Interceptor Well Field (IWF) Operational Metrics

Nevada Environmental Response Trust Groundwater Extraction and Treatment System Enhanced Operational Metrics																				
Date	I-AR		I-AA		I-AB		I-AC		I-AD		I-B		I-C		I-D		I-E		I-F	
	Flow (gpm)	Water Elevation (ft amsl)	Flow (gpm)	Water Elevation (ft amsl)	Flow (gpm)	Water Elevation (ft amsl)	Flow (gpm)	Water Elevation ⁴ (ft amsl)	Flow (gpm)	Water Elevation (ft amsl)	Flow (gpm)	Water Elevation (ft amsl)	Flow ⁵ (gpm)	Water Elevation (ft amsl)	Flow (gpm)	Water Elevation (ft amsl)	Flow (gpm)	Water Elevation (ft amsl)	Flow (gpm)	Water Elevation (ft amsl)
12/01/19	0.01	1726.89	0.80	1713.64	0.00	1720.60	0.00	1724.51	0.00	1738.90	0.82	1709.66	4.0	1718.13	1.1	1721.62	0.76	1720.71	4.7	1721.26
12/02/19 ^{2 3}	0.02	1726.89	0.79	1713.73	0.00	1720.60	0.00	1740.00	0.00	1738.61	0.81	1709.69	3.9	1712.73	1.1	1722.26	0.76	1720.95	4.6	1721.32
12/03/19	0.01	1726.97	0.81	1713.05	0.01	1720.58	0.00	1724.51	0.00	1738.74	0.87	1709.67	4.0	1713.27	1.1	1722.10	0.66	1721.33	4.5	1721.35
12/04/19	0.00	1726.79	0.83	1713.22	0.04	1720.59	0.00	1724.54	0.00	1738.83	0.85	1709.65	4.0	1712.68	1.1	1722.58	0.60	1721.35	4.5	1721.36
12/05/19	0.00	1726.87	0.82	1713.18	0.00	1720.58	0.03	1724.85	0.03	1738.84	0.84	1709.70	4.0	1713.41	1.1	1722.68	0.60	1721.37	4.6	1721.38
12/06/19	0.00	1726.99	0.82	1713.23	0.00	1720.59	0.00	1724.89	0.00	1738.84	0.81	1709.67	4.0	1711.76	1.0	1719.50	0.59	1721.41	4.6	1721.41
12/07/19	0.00	1727.04	0.82	1713.29	0.00	1720.60	0.00	1724.87	0.00	1738.84	0.80	1709.69	3.9	1710.94	1.0	1718.99	0.59	1721.46	4.5	1721.44
12/08/19	0.00	1726.96	0.82	1713.33	0.00	1720.60	0.00	1724.82	0.00	1738.86	0.79	1709.65	4.0	1711.23	1.1	1719.57	0.59	1721.45	4.5	1721.44
12/09/19 ²	0.00	1726.87	0.82	1713.37	0.00	1720.59	0.00	1724.73	0.00	1738.86	0.80	1709.67	3.9	1711.71	1.1	1719.23	0.59	1721.46	4.5	1721.44
12/10/19	0.00	1726.92	0.81	1713.36	0.00	1720.60	0.00	1724.68	0.00	1738.91	0.76	1709.68	3.8	1713.38	1.1	1723.09	0.59	1721.49	4.5	1721.48
12/11/19	0.00	1726.96	0.87	1713.41	0.00	1720.60	0.00	1720.69	0.00	1738.90	0.77	1709.69	3.7	1710.89	1.1	1716.77	0.59	1721.51	4.5	1721.49
12/12/19	0.00	1726.99	0.74	1713.45	0.00	1720.62	0.00	1724.66	0.00	1738.96	0.76	1709.65	3.6	1711.21	1.0	1719.62	0.59	1721.54	4.5	1721.52
12/13/19	0.00	1727.05	0.81	1713.34	0.00	1720.63	0.00	1724.72	0.00	1738.90	0.76	1709.67	2.4	1713.58	1.0	1720.31	0.59	1721.55	4.5	1721.55
12/14/19	0.00	1727.03	0.81	1713.47	0.00	1720.66	0.00	1724.74	0.00	1738.90	0.78	1709.68	2.3	1711.85	0.99	1719.59	0.59	1721.56	4.5	1721.58
12/15/19	0.01	1726.98	0.81	1713.39	0.00	1720.66	0.00	1724.62	0.00	1738.84	0.87	1709.72	2.5	1719.51	1.0	1725.19	0.60	1721.51	4.3	1721.58
12/16/19 ²	0.01	1727.07	0.81	1713.42	0.00	1720.66	0.00	1724.50	0.00	1738.86	0.83	1709.48	2.4	1718.97	1.0	1722.78	0.60	1721.40	4.4	1721.61
12/17/19	0.00	1727.12	0.81	1713.49	0.00	1720.68	0.00	1724.55	0.00	1738.76	0.84	1709.74	2.5	1719.73	1.2	1722.97	0.66	1721.46	4.5	1721.66
12/18/19	0.00	1727.18	0.81	1713.55	0.00	1720.69	0.00	1724.60	0.00	1738.79	0.84	1709.66	2.4	1719.05	1.2	1722.85	0.66	1721.50	4.5	1721.68
12/19/19	0.00	1727.18	0.81	1713.52	0.00	1720.68	0.00	1724.54	0.00	1738.80	0.84	1709.48	2.4	1718.73	1.2	1722.58	0.65	1721.51	4.6	1721.68
12/20/19	0.00	1727.20	0.81	1713.57	0.00	1720.68	0.00	1724.56	0.00	1738.92	0.84	1709.84	2.4	1719.55	1.2	1719.28	0.66	1721.54	4.6	1721.72
12/21/19	0.00	1727.25	0.80	1713.62	0.00	1720.69	0.00	1724.59	0.00	1738.91	0.84	1709.49	2.4	1721.21	1.2	1723.18	0.65	1721.59	4.5	1721.75
12/22/19	0.00	1727.29	0.81	1713.32	0.00	1720.69	0.00	1724.60	0.00	1738.88	0.83	1710.12	2.4	1720.86	1.1	1722.28	0.65	1721.62	4.5	1721.77
12/23/19 ^{2 3}	0.00	1727.27	0.81	1713.57	0.00	1720.72	0.00	1724.63	0.00	1738.85	0.84	1709.51	2.4	1720.18	1.1	1722.63	0.65	1721.70	4.5	1721.81
12/24/19	0.00	1727.29	0.81	1713.54	0.00	1720.72	0.00	1724.62	0.00	1738.92	0.85	1709.57	2.6	1719.73	1.1	1721.56	0.64	1721.74	4.5	1721.84
12/25/19	0.00	1727.31	0.81	1713.54	0.00	1720.71	0.00	1724.56	0.00	1738.96	0.85	1709.47	2.6	1719.38	1.1	1721.26	0.66	1721.68	4.5	1721.86
12/26/19	0.00	1727.34	0.81	1713.56	0.00	1720.72	0.00	1724.55	0.00	1738.98	0.85	1709.75	2.6	1719.88	1.1	1721.73	0.66	1721.73	4.6	1721.89
12/27/19	0.00	1727.35	0.81	1713.58	0.00	1720.71	0.00	1724.54	0.00	1738.99	0.85	1709.45	2.6	1719.78	1.1	1720.78	0.66	1721.78	4.6	1721.91
12/28/19	0.00	1727.38	0.81	1713.59	0.00	1720.70	0.00	1724.49	0.00	1738.99	0.84	1709.52	2.6	1719.73	1.1	1721.58	0.65	1721.81	4.5	1721.93
12/29/19	0.00	1727.43	0.80	1713.63	0.00	1720.71	0.00	1724.52	0.00	1738.03	0.84	1709.66	2.6	1719.38	1.1	1721.13	0.66	1721.80	4.5	1721.97
12/30/19 ²	0.00	1727.44	0.81	1713.44	0.00	1720.71	0.00	1724.55	0.00	1738.98	0.84	1709.49	2.6	1719.32	1.1	1721.08	0.66	1721.84	4.5	1721.84
12/31/19	0.00	1727.47	0.82	1713.48	0.00	1720.71	0.00	1724.54	0.00	1739.03	0.85	1709.49	2.5	1718.92	1.1	1718.71	0.66	1721.89	4.5	1722.04
Monthly Average	0.00	1727.12	0.81	1713.45	0.00	1720.65	0.00	1725.12	0.00	1738.85	0.82	1709.64	3.0	1716.47	1.1	1721.27	0.63	1721.52	4.5	1721.63
Analytical ¹	Conc (mg/L)	Date	Conc (mg/L)	Date	Conc (mg/L)	Date	Conc (mg/L)	Date	Conc (mg/L)	Date	Conc (mg/L)	Date	Conc (mg/L)	Date	Conc (mg/L)	Date	Conc (mg/L)	Date	Conc (mg/L)	Date
Perchlorate	660	12/3/2019	47	12/3/2019	120	12/4/2019	230	12/5/2019	130	12/5/2019	260	12/3/2019	450	12/5/2019	520	12/5/2019	360	12/5/2019	480	12/5/2019
Hexavalent Chromium	0.012	12/3/2019	0.057	12/3/2019	0.00033	12/3/2019	2.3	12/5/2019	1.3	12/5/2019	0.079	12/3/2019	2.5	12/5/2019	4.3	12/5/2019	5.3	12/5/2019	11	12/5/2019
Total Chromium	3.4	12/3/2019	0.068	12/3/2019	0.021	12/3/2019	2.3	12/5/2019	1.3	12/5/2019	0.10	12/3/2019	2.3	12/5/2019	4.1	12/5/2019	5.2	12/5/2019	11	12/5/2019

Notes:

- Flow reported as gpm is a daily average calculated from the totalizer reading.
- J = Result is less than the reporting limit but greater than or equal to the method detection limit and the concentration is an approximate value.
- 1: Analytical results are reported from TestAmerica.
- 2: On 12/02, 12/09, 12/16, 12/23 and 12/30, the IWF totalizers were reset. Instantaneous flow rate at the time of the water level measurement was used for these dates.
- 3: On 12/02 and 12/23, IWF offline briefly due to maintenance.
- 4: On 12/03, I-AC transducer replaced.
- 5: On 12/14, I-C offline briefly for motor replacement.

Table 3 - Interceptor Well Field (IWF) Operational Metrics

Nevada Environmental Response Trust Groundwater Extraction and Treatment System Enhanced Operational Metrics																				
Date	I-G		I-H		I-I		I-J		I-K		I-L		I-M		I-N		I-O			
	Flow (gpm)	Water Elevation (ft amsl)	Flow (gpm)	Water Elevation (ft amsl)	Flow (gpm)	Water Elevation (ft amsl)	Flow (gpm)	Water Elevation (ft amsl)	Flow (gpm)	Water Elevation (ft amsl)	Flow (gpm)	Water Elevation (ft amsl)	Flow (gpm)	Water Elevation (ft amsl)	Flow (gpm)	Water Elevation (ft amsl)	Flow (gpm)	Water Elevation (ft amsl)		
12/01/19	0.09	1721.51	1.6	1717.89	4.9	1722.09	6.6	1712.00	3.7	1709.13	1.7	1714.75	1.5	1722.57	2.1	1721.54	0.41	1721.61	3.0	1720.96
12/02/19 ^{2 3}	0.09	1721.16	1.5	1718.15	4.9	1722.13	6.5	1712.01	3.7	1709.13	1.5	1715.31	1.5	1722.63	2.4	1721.55	0.43	1721.67	3.2	1721.09
12/03/19	0.14	1721.21	1.6	1718.26	4.9	1722.17	6.5	1712.01	3.7	1710.12	1.6	1715.53	1.5	1722.65	2.3	1721.58	0.42	1721.71	2.9	1721.15
12/04/19	0.13	1721.26	1.6	1718.30	4.9	1722.18	6.6	1712.01	3.7	1709.10	1.6	1715.38	1.5	1722.66	2.3	1721.60	0.42	1721.74	2.9	1721.20
12/05/19	0.13	1721.32	1.6	1718.30	4.9	1722.18	6.5	1712.00	3.7	1709.26	1.6	1715.86	1.5	1722.68	2.3	1721.61	0.43	1721.73	2.9	1721.22
12/06/19	0.11	1721.40	1.6	1718.38	4.9	1722.20	6.6	1712.01	3.7	1709.85	1.6	1715.81	1.5	1722.70	2.3	1721.63	0.44	1721.75	2.8	1721.25
12/07/19	0.12	1721.41	1.6	1718.49	4.9	1722.23	6.6	1712.01	3.7	1709.05	1.6	1715.76	1.5	1722.70	2.3	1721.67	0.45	1721.79	2.8	1721.31
12/08/19	0.12	1721.38	1.6	1718.52	4.9	1722.23	6.6	1712.01	3.7	1709.07	1.6	1715.37	1.6	1722.70	2.3	1721.66	0.45	1721.80	2.8	1721.33
12/09/19 ²	0.12	1721.39	1.6	1718.54	4.9	1722.22	6.6	1712.01	3.7	1709.47	1.6	1715.28	1.6	1722.70	2.3	1721.65	0.45	1721.79	2.8	1721.35
12/10/19	0.13	1721.37	1.6	1718.53	4.9	1722.23	6.6	1712.01	3.7	1709.08	1.7	1715.55	1.6	1722.72	2.3	1721.68	0.45	1721.77	2.7	1721.33
12/11/19	0.13	1721.39	1.6	1718.53	4.9	1722.24	6.6	1712.01	3.7	1709.07	1.7	1715.45	1.6	1722.74	2.4	1721.68	0.44	1721.77	2.7	1721.34
12/12/19	0.13	1721.43	1.6	1718.56	4.9	1722.25	6.6	1712.01	3.7	1709.11	1.6	1715.78	1.5	1722.77	2.4	1721.71	0.44	1721.78	2.7	1721.36
12/13/19	0.13	1721.46	1.6	1718.66	4.9	1722.28	6.6	1712.01	3.7	1709.09	1.6	1715.65	1.5	1722.82	2.4	1721.74	0.44	1721.82	2.7	1721.41
12/14/19	0.12	1721.74	1.6	1718.86	4.9	1722.31	6.6	1712.01	3.7	1709.09	1.6	1716.48	1.5	1722.94	2.4	1721.81	0.43	1721.88	2.7	1721.51
12/15/19	0.08	1721.84	1.6	1718.79	4.8	1722.28	6.6	1712.02	3.7	1709.08	1.4	1717.81	1.4	1722.94	2.1	1721.86	0.37	1721.82	2.5	1721.49
12/16/19 ²	0.10	1721.84	1.6	1718.74	4.9	1722.25	6.6	1712.01	3.7	1709.08	1.5	1717.95	1.5	1722.96	2.2	1721.87	0.40	1721.80	2.6	1721.51
12/17/19	0.08	1721.90	1.6	1718.87	4.9	1722.30	6.6	1712.01	3.8	1709.09	1.5	1718.07	1.4	1723.01	2.1	1721.91	0.38	1721.85	2.4	1721.57
12/18/19	0.09	1721.90	1.6	1718.95	4.9	1722.32	6.7	1712.01	3.8	1709.08	1.5	1717.79	1.4	1723.04	2.2	1721.94	0.37	1721.88	2.4	1721.60
12/19/19	0.09	1721.90	1.6	1718.94	4.9	1722.31	6.7	1712.01	3.8	1709.12	1.5	1718.10	1.4	1723.06	2.3	1721.95	0.37	1721.88	2.4	1721.61
12/20/19	0.09	1721.88	1.6	1719.01	4.9	1722.33	6.7	1712.02	3.8	1709.08	1.5	1718.38	1.4	1723.10	2.4	1721.90	0.36	1721.90	2.4	1721.64
12/21/19	0.10	1721.91	1.6	1719.07	4.9	1722.35	6.7	1712.01	3.8	1709.08	1.5	1718.30	1.4	1723.13	2.4	1721.92	0.36	1721.93	2.4	1721.66
12/22/19	0.10	1721.92	1.6	1719.11	4.9	1722.37	6.8	1712.02	3.8	1709.09	1.5	1718.37	1.4	1723.16	2.3	1721.95	0.36	1721.95	2.3	1721.69
12/23/19 ^{2 3}	0.10	1721.46	1.6	1719.31	4.9	1722.41	6.8	1712.03	3.8	1709.08	1.5	1720.21	1.4	1723.21	2.4	1722.13	0.36	1721.98	2.4	1721.77
12/24/19	0.16	1721.58	1.6	1719.32	4.9	1722.40	6.8	1712.03	3.8	1709.09	1.2	1720.00	1.4	1723.23	2.0	1722.15	0.35	1721.98	2.3	1721.77
12/25/19	0.15	1721.58	1.6	1719.32	4.9	1722.40	6.8	1712.05	3.8	1709.09	1.2	1720.10	1.4	1723.25	2.0	1722.16	0.35	1721.98	2.2	1721.77
12/26/19	0.15	1721.63	1.6	1719.36	4.9	1722.41	6.8	1712.04	3.8	1709.09	1.2	1720.03	1.4	1723.28	2.0	1722.19	0.35	1722.00	2.2	1721.79
12/27/19	0.15	1721.67	1.6	1719.37	4.9	1722.41	6.8	1712.02	3.8	1709.09	1.3	1719.69	1.4	1723.29	2.0	1722.21	0.35	1722.00	2.2	1721.79
12/28/19	0.15	1721.61	1.6	1719.37	4.9	1722.40	6.8	1712.02	3.8	1709.08	1.3	1719.95	1.4	1723.31	2.0	1722.23	0.35	1721.99	2.2	1721.79
12/29/19	0.16	1721.64	1.6	1719.41	4.9	1722.42	6.8	1712.05	3.8	1709.08	1.3	1719.73	1.4	1723.34	2.0	1722.27	0.35	1722.01	2.2	1721.81
12/30/19 ²	0.16	1721.86	1.6	1719.50	4.9	1722.43	6.8	1712.02	3.8	1709.09	1.3	1720.21	1.4	1723.36	2.0	1722.35	0.35	1722.04	2.2	1721.90
12/31/19	0.13	1721.87	1.6	1719.53	4.9	1722.44	6.8	1712.05	3.8	1709.12	1.3	1720.12	1.4	1723.38	1.8	1722.38	0.35	1722.06	2.0	1721.92
Monthly Average	0.12	1721.59	1.6	1718.84	4.9	1722.30	6.7	1712.02	3.7	1709.17	1.5	1717.51	1.5	1722.97	2.2	1721.88	0.39	1721.86	2.6	1721.51
Analytical ¹	Conc (mg/L)	Date	Conc (mg/L)	Date	Conc (mg/L)	Date	Conc (mg/L)	Date	Conc (mg/L)	Date	Conc (mg/L)	Date	Conc (mg/L)	Date	Conc (mg/L)	Date	Conc (mg/L)	Date	Conc (mg/L)	Date
Perchlorate	810	12/23/2019	850	12/23/2019	630	12/5/2019	250	12/5/2019	230	12/5/2019	340	12/3/2019	380	12/5/2019	340	12/5/2019	765	12/23/2019	840	12/23/2019
Hexavalent Chromium	16	12/6/2019	15	12/6/2019	8.6	12/5/2019	3.9	12/5/2019	2.3	12/5/2019	0.69	12/3/2019	4.9	12/5/2019	4.9	12/5/2019	15	12/6/2019	15	12/6/2019
Total Chromium	14	12/6/2019	14	12/6/2019	8.4	12/5/2019	3.9	12/5/2019	2.2	12/5/2019	0.71	12/3/2019	4.7	12/5/2019	4.6	12/5/2019	15	12/6/2019	14	12/6/2019

Notes:
 Flow reported as gpm is a daily average calculated from the totalizer reading.
 1: Analytical results are reported from TestAmerica.
 2: On 12/02, 12/09, 12/16, 12/23 and 12/30, the IWF totalizers were reset. Instantaneous flow rate at the time of the water level measurement was used for these dates.
 3: On 12/02 and 12/23, IWF offline briefly due to maintenance.
 6: On 12/23, I-G and I-Q adjusted to meet flow target as directed by the Trust.
 7: Duplicates taken on 12/05 and 12/23 for well I-O; average of both values is presented and used for calculations.

Table 3 - Interceptor Well Field (IWF) Operational Metrics

Nevada Environmental Response Trust Groundwater Extraction and Treatment System Enhanced Operational Metrics																				
Date	I-Q		I-R		I-S		I-T		I-U		I-V		I-W		I-X		I-Y		I-Z	
	Flow ⁶ (gpm)	Water Elevation (ft amsl)	Flow (gpm)	Water Elevation (ft amsl)	Flow (gpm)	Water Elevation (ft amsl)	Flow (gpm)	Water Elevation (ft amsl)	Flow (gpm)	Water Elevation (ft amsl)	Flow (gpm)	Water Elevation (ft amsl)	Flow (gpm)	Water Elevation (ft amsl)	Flow (gpm)	Water Elevation (ft amsl)	Flow (gpm)	Water Elevation (ft amsl)	Flow (gpm)	Water Elevation ⁸ (ft amsl)
12/01/19	0.18	1720.69	0.47	1719.12	4.3	1706.04	0.59	1708.22	0.64	1714.39	4.2	1720.08	0.31	1720.38	3.3	1718.56	1.3	1715.65	8.4	< 1707.89
12/02/19 ^{2,3}	0.22	1720.78	0.48	1719.46	4.4	1706.04	0.58	1708.31	0.64	1714.50	4.2	1720.16	0.35	1720.56	3.3	1718.66	1.3	1716.35	8.3	< 1707.89
12/03/19	0.17	1720.79	0.33	1719.24	4.3	1705.99	0.60	1709.55	0.63	1714.52	4.4	1720.20	0.23	1720.08	3.4	1718.68	1.3	1717.11	8.2	< 1707.89
12/04/19	0.19	1720.78	0.35	1719.25	4.3	1705.99	0.62	1708.29	0.63	1714.17	4.4	1720.23	0.23	1720.90	3.3	1718.69	1.3	1715.82	8.2	< 1707.89
12/05/19	0.19	1720.75	0.37	1719.29	4.2	1705.99	0.63	1708.27	0.67	1713.99	4.3	1720.22	0.24	1718.77	3.4	1718.71	1.3	1713.86	8.2	< 1707.89
12/06/19	0.21	1720.66	0.38	1719.33	4.3	1705.99	0.62	1708.79	0.66	1713.91	4.3	1720.25	0.24	1717.61	3.4	1718.73	1.2	1713.11	8.2	< 1707.89
12/07/19	0.23	1720.72	0.36	1719.41	4.3	1706.00	0.61	1708.86	0.67	1714.03	4.4	1720.30	0.24	1717.87	3.4	1718.77	1.2	1714.04	8.2	< 1707.89
12/08/19	0.23	1720.69	0.37	1719.36	4.3	1705.99	0.62	1708.46	0.67	1713.87	4.5	1720.30	0.24	1718.18	3.4	1718.76	1.2	1713.71	8.4	< 1707.89
12/09/19 ²	0.23	1720.68	0.37	1719.34	4.3	1705.99	0.62	1708.02	0.67	1714.16	4.4	1720.30	0.24	1718.55	3.4	1718.77	1.2	1713.17	8.3	< 1707.89
12/10/19	0.24	1720.65	0.38	1719.36	4.3	1706.09	0.63	1708.91	0.65	1714.19	4.4	1720.30	0.43	1719.27	3.3	1718.80	1.2	1714.48	8.2	< 1707.89
12/11/19	0.25	1720.64	0.38	1719.40	4.4	1706.08	0.63	1707.90	0.64	1715.21	4.4	1720.32	0.57	1716.61	3.3	1718.82	1.2	1712.55	8.2	< 1707.89
12/12/19	0.25	1720.66	0.39	1719.35	4.4	1706.08	0.64	1707.90	0.62	1714.46	4.3	1720.34	0.57	1717.11	3.4	1718.84	1.2	1711.94	8.2	< 1707.89
12/13/19	0.25	1720.74	0.42	1719.31	4.5	1706.08	0.64	1707.90	0.64	1714.43	4.3	1720.39	0.56	1717.59	3.4	1718.87	1.2	1712.75	8.2	< 1707.89
12/14/19	0.24	1720.89	0.40	1719.69	4.6	1706.10	0.64	1707.90	0.64	1714.36	4.4	1720.46	0.52	1715.80	3.4	1718.91	1.2	1713.45	8.2	< 1707.89
12/15/19	0.25	1720.60	0.28	1719.85	4.7	1706.10	0.64	1707.92	0.53	1716.23	4.4	1720.42	0.74	1718.45	3.3	1718.94	1.2	1716.72	8.3	< 1707.89
12/16/19 ²	0.25	1720.79	0.34	1719.75	4.7	1706.09	0.64	1707.90	0.59	1715.59	4.4	1720.38	0.63	1715.49	3.4	1718.96	1.2	1716.84	8.3	< 1707.89
12/17/19	0.23	1720.86	0.33	1719.73	4.9	1706.09	0.65	1707.90	0.57	1715.72	4.4	1720.45	0.84	1717.11	3.3	1719.01	1.2	1717.15	8.3	< 1707.89
12/18/19	0.23	1720.91	0.34	1719.71	4.9	1706.09	0.65	1707.89	0.57	1715.74	4.4	1720.49	0.84	1716.59	3.3	1719.03	1.2	1716.77	8.3	< 1707.89
12/19/19	0.22	1720.96	0.35	1719.68	4.9	1706.09	0.66	1707.90	0.56	1715.81	4.4	1720.47	0.84	1716.69	3.3	1719.00	1.2	1716.12	8.3	< 1707.89
12/20/19	0.22	1721.01	0.36	1719.59	5.0	1706.09	0.66	1707.89	0.56	1715.75	4.3	1720.51	0.84	1716.23	3.4	1719.04	1.2	1716.69	8.2	< 1707.89
12/21/19	0.23	1720.95	0.41	1719.54	5.0	1706.09	0.66	1707.90	0.57	1715.71	4.3	1720.55	0.83	1717.68	3.4	1719.08	1.2	1717.02	8.2	< 1707.89
12/22/19	0.24	1720.99	0.40	1719.63	5.1	1706.09	0.67	1707.90	0.58	1715.72	4.5	1720.58	0.83	1717.18	3.4	1719.09	1.2	1716.45	8.4	< 1707.89
12/23/19 ^{2,3}	0.24	1720.62	0.41	1719.94	5.0	1706.12	0.67	1709.83	0.58	1716.18	4.4	1720.66	0.83	1717.61	3.4	1719.20	1.2	1716.16	8.3	< 1707.89
12/24/19	0.32	1720.65	0.32	1719.94	5.3	1706.11	0.64	1709.34	0.55	1716.09	4.4	1720.66	0.95	1718.81	3.3	1719.22	1.2	1716.70	8.3	< 1707.89
12/25/19	0.35	1720.53	0.32	1719.90	5.3	1706.11	0.64	1708.22	0.55	1716.16	4.4	1720.66	1.0	1718.61	3.3	1719.23	1.2	1716.54	8.3	< 1707.89
12/26/19	0.35	1720.61	0.31	1719.99	5.3	1706.11	0.62	1710.64	0.55	1716.13	4.3	1720.68	1.0	1718.75	3.3	1719.26	1.2	1716.76	8.4	< 1707.89
12/27/19	0.34	1720.68	0.35	1719.83	5.2	1706.11	0.63	1710.21	0.56	1716.15	4.3	1720.68	1.0	1718.08	3.4	1719.27	1.2	1716.42	8.4	< 1707.89
12/28/19	0.33	1720.71	0.38	1719.74	5.2	1706.10	0.64	1709.17	0.55	1716.14	4.4	1720.67	1.0	1720.23	3.3	1719.30	1.2	1717.09	8.4	< 1707.89
12/29/19	0.32	1720.75	0.38	1719.75	5.3	1706.10	0.65	1709.50	0.54	1716.24	4.5	1720.71	1.0	1718.48	3.3	1719.33	1.2	1715.66	8.4	< 1707.89
12/30/19 ²	0.33	1721.04	0.38	1719.92	5.3	1707.45	0.65	1710.07	0.55	1715.54	4.4	1720.75	1.0	1719.43	3.3	1719.39	1.2	1716.42	8.4	< 1707.89
12/31/19	0.24	1721.13	0.34	1719.90	5.3	1708.95	0.64	1710.11	0.60	1715.45	4.4	1720.77	0.99	1710.81	3.3	1719.43	1.2	1714.71	8.4	< 1707.89
Monthly Average	0.25	1720.77	0.37	1719.59	4.7	1706.20	0.63	1708.63	0.60	1715.18	4.4	1720.45	0.66	1717.92	3.4	1718.98	1.2	1715.42	8.3	< 1707.89
Analytical ¹	Conc (mg/L)	Date	Conc (mg/L)	Date	Conc (mg/L)	Date	Conc (mg/L)	Date	Conc (mg/L)	Date	Conc (mg/L)	Date	Conc (mg/L)	Date	Conc (mg/L)	Date	Conc (mg/L)	Date	Conc (mg/L)	Date
Perchlorate	850	12/23/2019	820	12/3/2019	390	12/3/2019	1,100	12/23/2019	1,200	12/23/2019	640	12/5/2019	780	12/23/2019	560	12/5/2019	680	12/3/2019	300	12/5/2019
Hexavalent Chromium	15	12/6/2019	0.30	12/3/2019	1.0	12/3/2019	17	12/6/2019	17	12/6/2019	12	12/5/2019	16	12/6/2019	6.6	12/5/2019	0.56	12/3/2019	7.5	12/5/2019
Total Chromium	15	12/6/2019	0.29	12/3/2019	0.82	12/3/2019	17	12/6/2019	16	12/6/2019	12	12/5/2019	15	12/6/2019	6.1	12/5/2019	0.53	12/3/2019	7.2	12/5/2019

Notes:

Flow reported as gpm is a daily average calculated from the totalizer reading.

1: Analytical results are reported from TestAmerica.

2: On 12/02, 12/09, 12/16, 12/23 and 12/30, the IWF totalizers were reset. Instantaneous flow rate at the time of the water level measurement was used for these dates.

3: On 12/02 and 12/23, IWF offline briefly due to maintenance.

6: On 12/23, I-G and I-Q adjusted to meet flow target as directed by the Trust.

8: A "<" preceding the water elevation indicates the reported water level is below the transducer. Average monthly water elevation calculations include the transducer elevation in instances where the water level is below the transducer.

Table 4 - Treatment Plant Operational Metrics

Nevada Environmental Response Trust Groundwater Extraction and Treatment System Enhanced Operational Metrics																
Date	LS #2	GWTP Effluent ¹				GW-11 Influent ¹				FBR Plant Influent ¹						
	Flow ⁴ (gpm)	Flow (gpm)	TA - Cr (TR) (mg/L)	TA - Cr (VI) (mg/L)	TA - ClO ₄ (mg/L)	Flow ⁵ (gpm)	TA - Cr (TR) (mg/L)	TA - Cr (VI) (mg/L)	TA - ClO ₄ (mg/L)	Flow ⁶ (gpm)	TA - ClO ₄ (mg/L)	ETI - ClO ₄ (mg/L)	TA - ClO ₃ (mg/L)	TA - NO ₃ - N (mg/L)	TA - Cr (TR) (mg/L)	TA - Cr (VI) (mg/L)
12/01/19	966	62				0.00				1,029		205				
12/02/19 ³	968	62				0.00				1,030		203	120	8.9	0.033	0.046
12/03/19	967	62				0.00				1,099		170				
12/04/19	964	62	0.54	ND	610	0.00				1,203		190				
12/05/19	964	62				0.00				1,253		243				
12/06/19	963	63				0.00				1,026		205				
12/07/19	944	63				0.00				1,208		192				
12/08/19	955	63				0.00				1,027	250	175				
12/09/19 ³	950	63				0.00				1,189		201		8.5	0.016	0.012
12/10/19	957	62				0.00				1,019		200				
12/11/19	964	63	0.54	ND	540	0.00				1,027		207				
12/12/19	957	63				0.00				1,020		197				
12/13/19	953	62				0.00				1,016		194				
12/14/19	955	62				0.00				1,017		212				
12/15/19	956	62				0.00				1,019		212				
12/16/19 ³	956	62				0.00				1,018		196		10	0.019	0.014
12/17/19	956	62				71				1,018		205				
12/18/19	956	63	0.21	ND	600	3.8	0.079	0.017	66	1,018		208				
12/19/19	955	62				0.00				1,017		210				
12/20/19	955	62				0.00				1,017		195				
12/21/19	956	63				0.00				1,019	250	193				
12/22/19	960	63				0.00				1,022		173				
12/23/19 ³	958	60	0.16			0.00				1,018		166		9.5	0.017	0.015
12/24/19	958	63				0.00				1,021		125				
12/25/19	955	63				0.00				1,018		152				
12/26/19	956	62				0.00				1,019		84				
12/27/19	965	63		ND F2	500	0.00				1,027		145				
12/28/19	969	63				0.00				1,032	200	125				
12/29/19	981	64				0.00				1,044		98				
12/30/19 ³	975	62	0.27	ND	510	0.00				1,037		90		9.4	0.034	0.038
12/31/19	968	63				0.00				1,031		79				
Monthly Average ²	960	62	0.35	ND	557	2.4	0.079	0.017	66	1,050	235	176	120	9.3	0.023	0.023

Notes:
 Flow reported as gpm is a daily average calculated from the totalizer reading. The only exceptions are the instantaneous flow readings recorded for the 1st and 2nd Stage FBR flows.
 ND = Not detected above laboratory method detection limit (ClO₄ = 0.5 ug/L; ClO₃ = 10 ug/L; NO₃-N = 0.055 mg/L, Cr(VI) = 0.25 ug/L).
 J = Result is less than the reporting limit but greater than or equal to the method detection limit and the concentration is an approximate value.
 F2 = MS/MSD RPD exceeds control limits.
 1: ETI = Envirogen internal process control data, TA = TestAmerica data.
 2: All average concentrations reported are monthly flow weighted averages.
 3: On 12/02, 12/09, 12/16, 12/23 and 12/30, the LS #2 totalizer was reset. Instantaneous flow rate at the time of the water level measurement was used for these dates.
 4: From 12/03 to 12/04, communication to LS #2 was lost briefly due to instrument error.
 5: Flows bypassed GW-11 Influent and FBR Plant Influent totalizers from 12/01 to 12/31 due to FBR plant influent strainers clogging, except for monthly sampling and maintenance.
 6: From 12/01 to 12/31, the FBR Plant Influent Flow was estimated by summing flows for LS #2, GWTP Effluent, and GW-11 Effluent.

Table 4 - Treatment Plant Operational Metrics

Nevada Environmental Response Trust Groundwater Extraction and Treatment System Enhanced Operational Metrics														
Date	1st Stage FBR ⁷			2nd Stage FBR ⁷			FBR Plant Effluent ¹							
	Flow (gpm)	pH (s.u.)	ORP (mV)	Flow (gpm)	pH (s.u.)	ORP (mV)	Flow ⁸ (gpm)	TA - ClO ₄ (mg/L)	ETI - ClO ₄ (mg/L)	TA - ClO ₃ (mg/L)	TA - Cr (TR) (mg/L)	TA - Cr (VI) (mg/L)	TA - NO ₃ - N (mg/L)	ETI - Turbidity (NTU)
12/01/19	1,051	6.3	-373	866	6.2	-379	1,040		ND					41
12/02/19 ³	1,059	6.2	-328	1,001	6.2	-378	1,049		ND	ND			ND	33
12/03/19	1,000	6.2	-316	845	6.4	-377	1,015		ND				ND	27
12/04/19	717	6.3	-363	848	6.5	-380	1,043		ND				ND	30
12/05/19	1,103	6.3	-367	917	6.7	-377	628		ND				ND	32
12/06/19	1,092	6.3	-383	978	6.6	-383	1,047		ND				ND	24
12/07/19	1,076	6.4	-382	945	6.6	-379	1,086	ND					ND	55
12/08/19	1,055	6.3	-383	980	6.4	-381	1,051		ND				ND	23
12/09/19 ³	1,037	6.3	-392	972	6.4	-384	1,036				0.0034 J		ND	44
12/10/19	1,020	6.2	-386	962	6.3	-381	1,031						ND	31
12/11/19	1,055	6.3	-383	1,050	6.3	-381	1,030						ND	40
12/12/19	1,074	6.2	-325	828	6.2	-360	1,049		ND				ND	33
12/13/19	1,031	6.2	-314	958	6.2	-368	1,048		ND				ND	41
12/14/19	1,026	6.3	-362	1,067	6.3	-372	1,026		ND				ND	33
12/15/19	1,023	6.2	-359	1,053	6.2	-375	1,016						ND	30
12/16/19 ³	1,056	6.2	-363	962	6.2	-375	1,016				0.019		ND	18
12/17/19	1,069	6.2	-359	713	6.3	-378	1,031						ND	27
12/18/19	1,017	6.3	-370	1,106	6.2	-378	970						ND	22
12/19/19	1,068	6.2	-377	999	6.2	-377	930						ND	52
12/20/19	1,033	6.3	-382	1,007	6.3	-380	1,023						ND	60
12/21/19	1,039	6.5	-398	1,082	6.5	-387	994	ND					ND	52
12/22/19	1,003	6.5	-401	849	6.5	-390	1,000						ND	33
12/23/19 ³	1,021	6.5	-400	989	6.6	-390	1,008				0.0043 J		ND	15
12/24/19	1,078	6.4	-392	1,030	6.4	-383	999						ND	55
12/25/19	1,056	6.3	-386	1,029	6.3	-379	1,058						ND	42
12/26/19	1,042	6.4	-389	1,001	6.4	-379	1,023						ND	37
12/27/19	1,085	6.5	-370	1,024	6.7	-380	1,003						ND	31
12/28/19	1,072	6.6	-386	952	6.6	-389	1,064	ND	^				ND	13
12/29/19	1,041	6.6	-398	946	6.7	-397	1,026						ND	15
12/30/19 ³	1,008	6.4	-378	961	6.4	-385	1,007				0.0084		ND	100
12/31/19	1,040	6.3	-341	853	6.3	-380	1,016						ND	27
Monthly Average ²	1,037	6.3	-371	960	6.4	-380	1,012	ND	ND	ND	0.0074	ND	ND	36

Notes:

Flow reported as gpm is a daily average calculated from the totalizer reading. The only exceptions are the instantaneous flow readings recorded for the 1st and 2nd Stage FBR flows.

ND = Not detected above laboratory method detection limit (ClO₄ = 0.5 ug/L; ClO₃ = 10 ug/L; NO₃-N= 0.055 mg/L, Cr(VI) = 0.25 ug/L).

J = Result is less than the reporting limit but greater than or equal to the method detection limit and the concentration is an approximate value.

^ = Instrument related QC is outside acceptance limits.

1: ETI = Envirogen internal process control data, TA = TestAmerica data.

2: All average concentrations reported are monthly flow weighted averages.

7: For 1st and 2nd stage FBRs, flow measurements are collected from the influent lines and pH and ORP samples are collected from the recycle lines.

8: FBR Plant Effluent represents effluent discharged to Las Vegas Wash. While this may represent the entirety of the FBR Plant effluent, any diversions to GW-11 are subtracted from the original effluent flow.

GW-11 Level Monitoring ¹				
Date	Field Measurement (ft)	Volume (MG)		
12/15/19	26.1	41.8		
12/31/19	23.8	44.8		

GW-11 Leak Detection Monitoring				
Date	Amount Pumped ² (gallons)			
	NW Corner	NE Corner	SW Corner	SE Corner
12/11/19	0	0	1,454	0
12/25/19	0	0	2,721	0

GW-11 Composite Sample ³		
Analytes	Concentration	Units
Perchlorate	11	mg/L
Chlorate	21	mg/L
Ammonia as N	0.32	mg/L
Total Phosphorus	0.11	mg/L
Total Dissolved Solids (TDS)	12,000	mg/L
Total Suspended Solids (TSS)	91	mg/L
pH	8.7 HF	s.u.
Calcium	520	mg/L
Iron	0.58	mg/L
Chromium (total)	0.023	mg/L
Chromium VI	ND	mg/L
Chloride	3,800	mg/L
Nitrate as N	ND	mg/L
Sulfate	3,200	mg/L

Notes:

HF = Field parameter with a holding time of 15 minutes. Test performed by laboratory at client's request.

H = Sample was prepped or analyzed beyond the specified holding time

H3 = Sample was received and analyzed past holding time.

ND = Not detected above laboratory method detection limit (NH₃-N= 0.1 mg/L; Total P = 0.025 ug/L; Cr(VI) = 0.25 ug/L).

- 1: A transducer installed along the eastern berm provides water pressure measurements that are correlated to elevations for calculation of water depths. Results from a December 2018 bathymetric survey of the pond will be used to identify adjustment to the procedure, if necessary.
- 2: Pumping occurs over three consecutive days. The total amount pumped over the three day period is listed with the last day pumping occurred.
- 3: GW-11 Corner Composite Sample is collected quarterly, most recent sampling results are presented. Sampled on: November 5, 2019.

Nevada Environmental Response Trust Groundwater Extraction and Treatment System Enhanced Operational Metrics						
Date	Flow ¹ (gpm)	FBR Influent Concentration			Influent Function Load ³ (lbs/day)	6 Month Rolling Average (lbs/day)
		ClO ₄ ² (mg/L)	NO ₃ as N (mg/L)	ClO ₃ (mg/L)		
Jan 2019	1,067	247	10	140	991	861
Feb 2019	1,070	264	9	130	997	922
Mar 2019	1,035	233	10	140	932	962
Apr 2019	1,038	102	10	89	529	906
May 2019	1,027	118	11	140	677	856
June 2019	1,009	138	6	120	620	791
July 2019	1,007	102	10	140	621	729
Aug 2019	1,005	123	10	140	664	674
Sep 2019	1,015	123	11	130	662	629
Oct 2019	1,012	217	10	130	852	683
Nov 2019	1,019	258	9	130	942	727
Dec 2019	1,050	235	9	120	895	773

Notes:

Concentrations and flow are presented as monthly average.

1: Flow used in loading calculation is average monthly FBR effluent flow to be consistent with historical loading calculations.

2: Treatment of AP-5 wash water began on July 17, 2017 and was suspended on August 4, 2017 to allow Envirogen to evaluate internal process controls to meet discharge limits. Treatment of AP-5 wash water resumed on August 31, 2017. The AP-5 wash water feed rate was decreased in March 2019 to prepare for the lower seasonal ammonia permit limits beginning April 1. The AP-5 wash water feed rate was increased on October 1, 2018 in accordance with the higher seasonal ammonia permit limits beginning October 1.

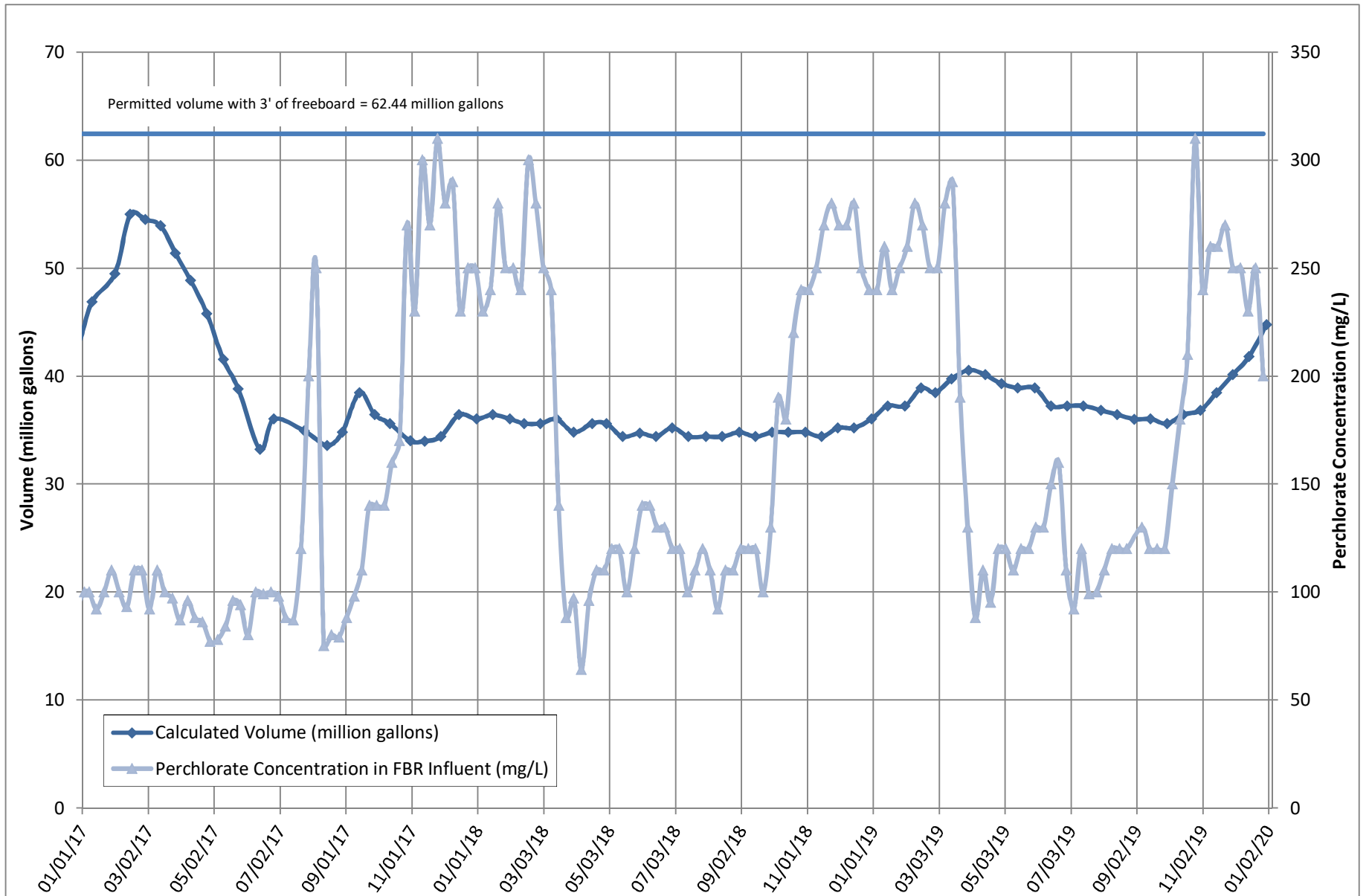
3: FBR loading calculated as $[(0.9 \cdot \text{NO}_3 \text{ as N} + 0.17 \cdot \text{ClO}_3 + 0.18 \cdot \text{ClO}_4) \cdot \text{Flow} \cdot 1440 / 1000000 \cdot 8.34]$.

Table 7 - AP Area Operational Metrics

Nevada Environmental Response Trust Groundwater Extraction and Treatment System Enhanced Operational Metrics																
Date	E1-1		E1-2		E1-3		E2-1		E2-2		E2-3		E2-4		E2-5	
	Flow (gpm)	Water Elevation (ft amsl)	Flow (gpm)	Water Elevation (ft amsl)	Flow (gpm)	Water Elevation (ft amsl)	Flow (gpm)	Water Elevation (ft amsl)	Flow (gpm)	Water Elevation (ft amsl)	Flow (gpm)	Water Elevation (ft amsl)	Flow (gpm)	Water Elevation (ft amsl)	Flow ³ (gpm)	Water Elevation (ft amsl)
12/01/19	2.8	1711.34	1.1	1713.19	0.91	1710.82	1.1	1720.12	1.5	1721.47	1.6	1718.73	1.6	1717.24	0.38	1719.99
12/02/19	2.8	1710.97	1.1	1713.06	0.89	1711.43	1.3	1715.50	1.5	1719.83	1.6	1717.58	1.6	1717.23	0.38	1720.44
12/03/19	2.8	1711.63	1.1	1712.79	0.89	1709.70	1.3	1708.30	1.5	1717.27	1.7	1718.41	1.6	1716.77	0.40	1721.81
12/04/19	2.8	1711.23	1.1	1714.26	0.90	1711.54	1.2	1708.37	1.7	1718.20	1.6	1717.62	1.5	1717.82	0.38	1709.96
12/05/19	2.8	1708.56	1.1	1708.48	0.91	1705.65	1.2	1708.58	1.6	1710.81	1.6	1709.42	1.6	1711.31	0.38	1707.50
12/06/19	2.7	1709.72	1.1	1711.40	0.91	1706.83	1.2	1710.49	1.6	1711.29	1.5	1714.33	1.6	1713.94	0.38	1716.62
12/07/19	2.7	1707.80	1.1	1709.54	0.91	1707.02	1.1	1711.89	1.6	1712.84	1.6	1714.23	1.6	1712.44	0.38	1717.91
12/08/19	2.8	1709.03	1.1	1710.34	0.86	1707.06	1.1	1713.04	1.6	1712.74	1.5	1714.60	1.6	1714.85	0.54	1712.45
12/09/19	2.8	1711.32	1.1	1713.44	0.88	1713.54	1.1	1715.24	1.6	1717.13	1.5	1717.89	1.6	1717.72	0.61	1709.72
12/10/19	2.8	1711.25	0.99	1714.02	0.89	1713.42	1.1	1715.41	1.6	1716.42	1.6	1718.60	1.5	1717.73	0.52	1717.62
12/11/19	2.8	1706.80	1.1	1711.21	0.83	1709.58	1.1	1710.99	1.6	1713.84	1.5	1713.02	1.6	1712.34	0.45	1711.46
12/12/19	2.7	1705.86	1.0	1708.94	0.95	1708.98	1.1	1712.60	1.6	1713.50	1.4	1713.80	1.6	1713.33	0.71	1713.08
12/13/19	2.8	1709.61	1.1	1710.65	0.88	1710.65	1.1	1712.60	1.6	1715.19	1.4	1714.13	1.6	1713.31	0.55	1713.76
12/14/19	2.8	1710.30	1.1	1709.59	0.87	1710.30	1.1	1712.23	1.6	1713.83	1.4	1714.48	1.6	1714.15	0.56	1712.69
12/15/19	2.8	1711.55	1.0	1713.65	0.86	1713.72	1.1	1717.30	1.7	1717.70	1.6	1720.11	1.5	1718.01	0.43	1712.79
12/16/19	2.8	1711.48	0.96	1713.80	0.88	1713.10	1.1	1716.37	1.7	1717.19	1.5	1717.48	1.6	1718.40	0.43	1712.69
12/17/19	2.8	1712.58	0.93	1714.78	0.87	1714.30	1.1	1715.94	1.7	1716.12	1.5	1716.78	1.6	1717.33	0.43	1717.81
12/18/19	2.8	1711.12	1.1	1714.94	0.97	1715.22	1.1	1718.09	1.7	1717.31	1.6	1718.96	1.6	1716.74	0.46	1718.10
12/19/19	2.8	1709.43	1.1	1712.64	0.94	1712.47	1.1	1717.47	1.6	1717.57	1.7	1717.90	1.6	1717.68	0.46	1717.81
12/20/19	2.7	1710.83	1.1	1714.34	0.94	1714.02	1.1	1714.20	1.6	1717.47	1.7	1715.44	1.6	1717.63	0.47	1718.28
12/21/19	2.8	1711.72	1.2	1714.11	0.96	1713.82	1.1	1716.07	1.7	1717.27	1.7	1716.10	1.6	1717.53	0.47	1717.37
12/22/19	2.8	1712.68	1.1	1713.36	0.94	1713.77	1.1	1714.77	1.6	1717.37	1.7	1715.88	1.6	1717.25	0.46	1717.84
12/23/19	2.7	1712.58	1.1	1712.14	0.92	1714.37	1.0	1717.17	1.6	1716.77	1.7	1715.71	1.6	1716.39	0.45	1718.97
12/24/19	2.9	1712.32	1.1	1712.61	0.96	1714.32	1.1	1717.47	1.7	1717.52	1.8	1716.20	1.6	1716.11	0.46	1718.37
12/25/19	2.8	1712.18	1.1	1713.31	0.95	1714.29	1.0	1717.20	1.7	1717.01	1.7	1715.88	1.6	1716.30	0.46	1718.23
12/26/19	2.8	1713.08	1.1	1712.66	0.94	1713.77	1.0	1718.69	1.6	1717.69	1.6	1717.62	1.6	1717.89	0.44	1717.33
12/27/19	2.8	1713.00	1.1	1712.74	0.94	1713.82	1.0	1717.12	1.6	1717.49	1.6	1717.48	1.6	1717.46	0.42	1717.27
12/28/19	2.8	1713.28	1.1	1713.11	0.95	1714.12	1.0	1717.22	1.7	1717.27	1.6	1716.90	1.6	1717.31	0.42	1716.87
12/29/19	2.8	1713.73	1.1	1713.31	0.93	1713.77	1.0	1717.57	1.6	1717.47	1.6	1717.05	1.6	1717.46	0.42	1716.97
12/30/19	2.8	1713.23	1.1	1713.51	0.95	1713.87	1.0	1717.37	1.6	1717.62	1.7	1717.30	1.6	1716.90	0.41	1717.05
12/31/19	2.9	1711.43	1.1	1713.36	0.96	1711.90	1.3	1719.60	1.7	1717.39	1.7	1717.13	1.6	1717.01	0.40	1717.45
Monthly Average	2.8	1711.02	1.1	1712.56	0.91	1711.98	1.1	1715.00	1.6	1716.41	1.6	1716.35	1.6	1716.25	0.46	1716.00
Analytical	Conc (mg/L)	Date	Conc ² (mg/L)	Date	Conc (mg/L)	Date	Conc (mg/L)	Date	Conc ² (mg/L)	Date	Conc (mg/L)	Date	Conc (mg/L)	Date	Conc (mg/L)	Date
Perchlorate	600	12/2/2019	1,700	12/2/2019	760	12/2/2019	100	12/2/2019	325	12/2/2019	690	12/2/2019	1,100	12/2/2019	1,300	12/2/2019
Hexavalent Chromium	0.042	12/2/2019	0.24	12/2/2019	0.38	12/2/2019	0.027	12/2/2019	0.025	12/2/2019	0.026	12/2/2019	0.043	12/2/2019	0.087	12/2/2019
Total Chromium	0.041	B 12/2/2019	0.22	B 12/2/2019	0.37	B 12/2/2019	0.036	B 12/2/2019	0.030	B 12/2/2019	0.036	B 12/2/2019	0.054	B 12/2/2019	0.24	B 12/2/2019

Notes:
 Flow reported as gpm is a daily average calculated from the totalizer reading.
 The flow rate at individual wells is adjusted daily to maintain the water level in the wells above the pump.
 B = Compound was found in the blank and sample.
 1: Analytical results are reported from TestAmerica.
 2: Duplicates taken on 12/02 for well E2-2; average of both values is presented and used for calculations.
 3: On 12/08, for E2-5, new totalizer used for flow calculation.

Figure 1 - GW-11 Pond Volume and FBR Influent Perchlorate Concentration



Note:

1. Treatment of AP-5 wash water began on July 17, 2017 and was suspended on August 4, 2017 to allow Envirogen to evaluate internal process controls to meet discharge limits. Treatment of AP-5 wash water resumed on August 31, 2017. The AP-5 wash water feed rate was increased on October 1, 2019 in accordance with the higher seasonal ammonia permit limits beginning October 1. The AP-5 wash water feed rate was decreased in March 2019 to prepare for the lower seasonal ammonia permit limits beginning April 1.

Figure 2 - FBR Equivalent Loading Calculation

