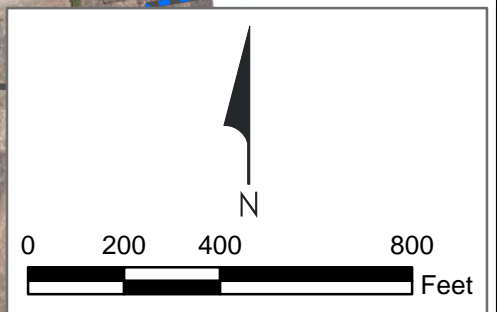


Legend

- Excavation Control Areas (ECAs)
- Polygon Remediation Completed
- Polygon Area Inaccessible, Remediation Not Performed
- NERT Site Boundary
- Remediation Zones

Map Source: Aerotech Mapping, Inc. July-August 2016.

See Figure 6b for
Excavation Control Area
(ECA) Descriptions.

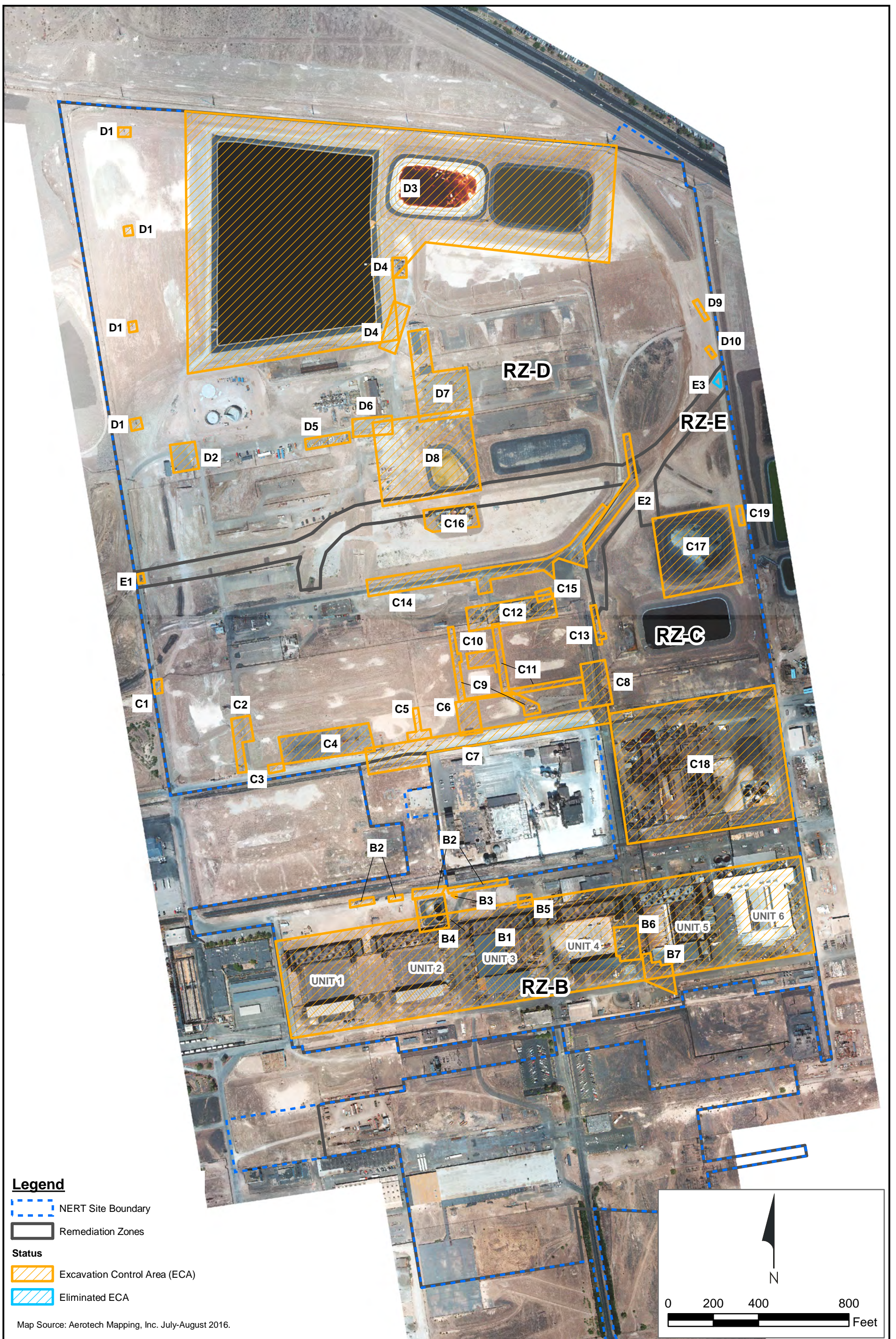


Excavation Control Areas - All Remediation Zones
Nevada Environmental Response Trust Site, Henderson, Nevada



Figure
1



Drafter: EA/RS Date: 3/13/2018 Contract Number: 1690006941 Approved by: Revised:

Path: \\wce\lps1\eng\LePetomane\NERT\Soil Excavation\GIS\Maps\ExcavationControlAreas_2018\Fig 1_ExcavationControlAreas_RZ_2018.mxd



Legend

-  NERT Site Boundary
-  Remediation Zones

- Status**
-  Excavation Control Area (ECA)
 -  Eliminated ECA

Map Source: Aerotech Mapping, Inc. July-August 2016.

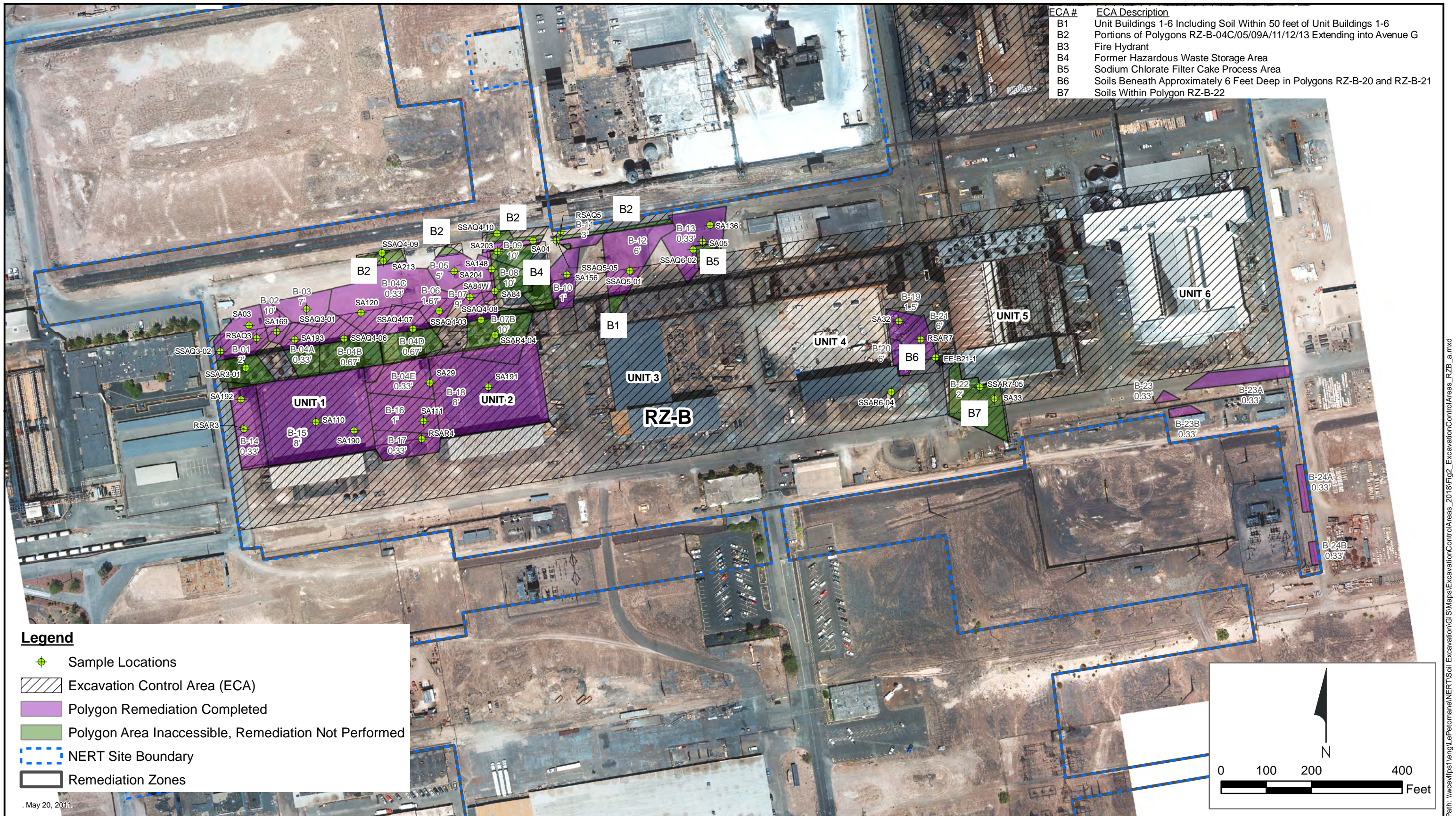


Excavation Control Areas - All Remediation Zones
 Nevada Environmental Response Trust Site
 Henderson, Nevada

Figure
1a

Drafter: RS Date: 3/13/2018 Contract Number: 1690006941 Approved by: Revised:

Path: \\wce\lps1\eng\LePetomane\NERT\Soil Excavation\GIS\Maps\ExcavationControlAreas_2018\Fig1a_ProposedExcavationControlAreas_RZ_2018.mxd

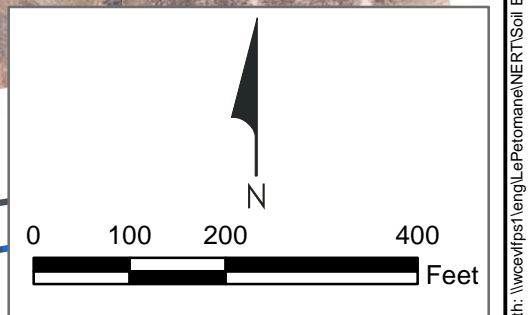


| ECA # | ECA Description |
|-------|---|
| B1 | Unit Buildings 1-6 Including Soil Within 50 feet of Unit Buildings 1-6 |
| B2 | Portions of Polygons RZ-B-04C/05/09A/11/12/13 Extending into Avenue G |
| B3 | Fire Hydrant |
| B4 | Former Hazardous Waste Storage Area |
| B5 | Sodium Chlorate Filter Cake Process Area |
| B6 | Soils Beneath Approximately 6 Feet Deep in Polygons RZ-B-20 and RZ-B-21 |
| B7 | Soils Within Polygon RZ-B-22 |

Legend

- Sample Locations
- Excavation Control Area (ECA)
- Polygon Remediation Completed
- Polygon Area Inaccessible, Remediation Not Performed
- NERT Site Boundary
- Remediation Zones

May 20, 2011.



Excavation Control Areas in RZ-B
Nevada Environmental Response Trust Site, Henderson, Nevada

Drafter: EMcC

Date: 2/1/2018

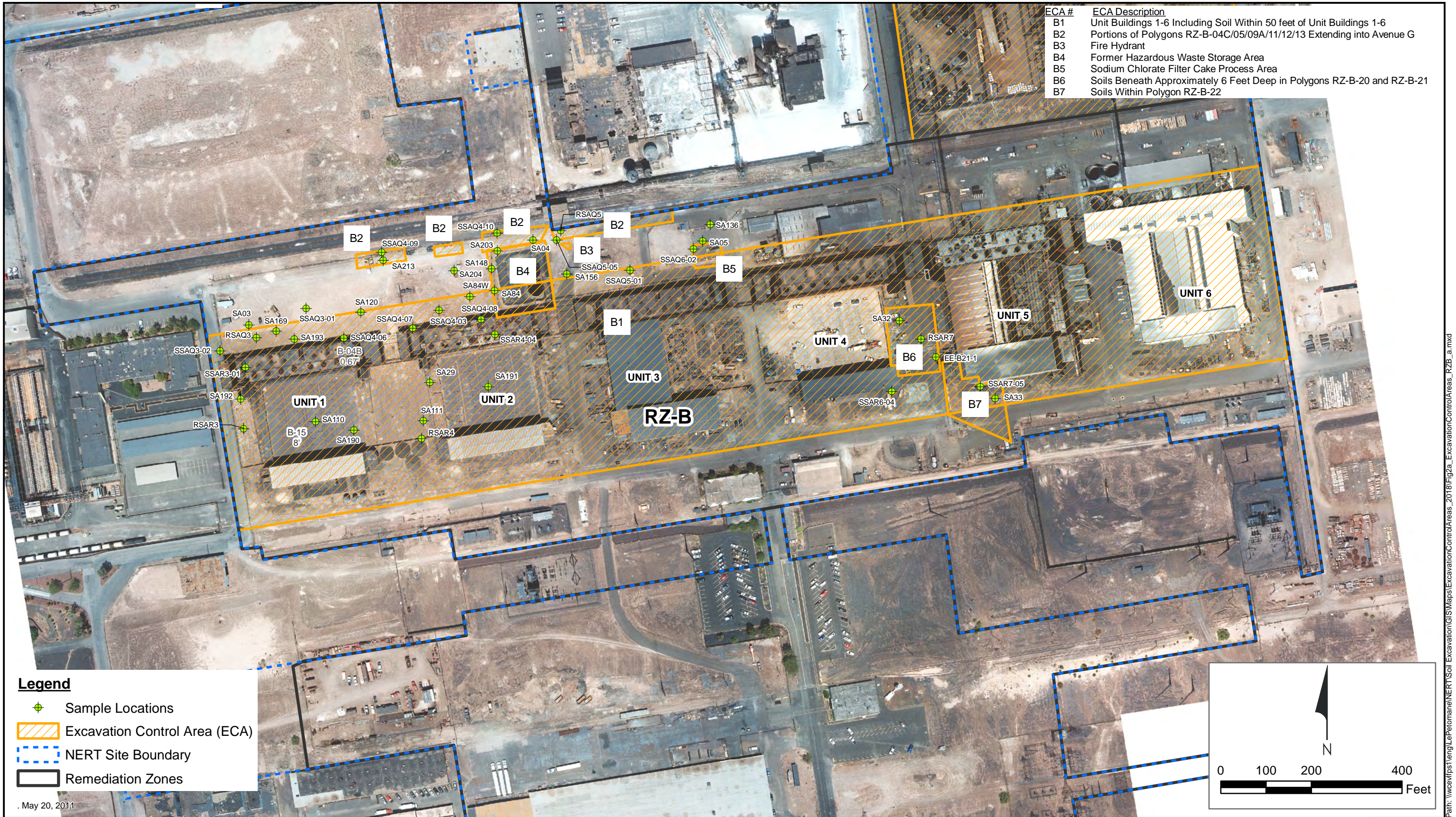
Contract Number: 1690006941

Approved by: DR

Revised:

Figure
2

Path: \\wccaffps1\eng\LePetromana\NERT\Soil Excavation\GIS\Maps\ExcavationControlAreas_2018\Fig2_ExcavationControlAreas_RZB_a.mxd

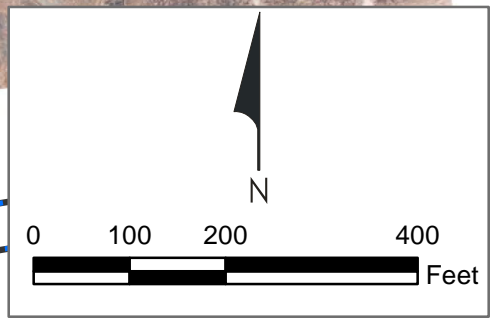


| ECA # | ECA Description |
|-------|---|
| B1 | Unit Buildings 1-6 Including Soil Within 50 feet of Unit Buildings 1-6 |
| B2 | Portions of Polygons RZ-B-04C/05/09A/11/12/13 Extending into Avenue G |
| B3 | Fire Hydrant |
| B4 | Former Hazardous Waste Storage Area |
| B5 | Sodium Chlorate Filter Cake Process Area |
| B6 | Soils Beneath Approximately 6 Feet Deep in Polygons RZ-B-20 and RZ-B-21 |
| B7 | Soils Within Polygon RZ-B-22 |

Legend

| | |
|--|-------------------------------|
| | Sample Locations |
| | Excavation Control Area (ECA) |
| | NERT Site Boundary |
| | Remediation Zones |

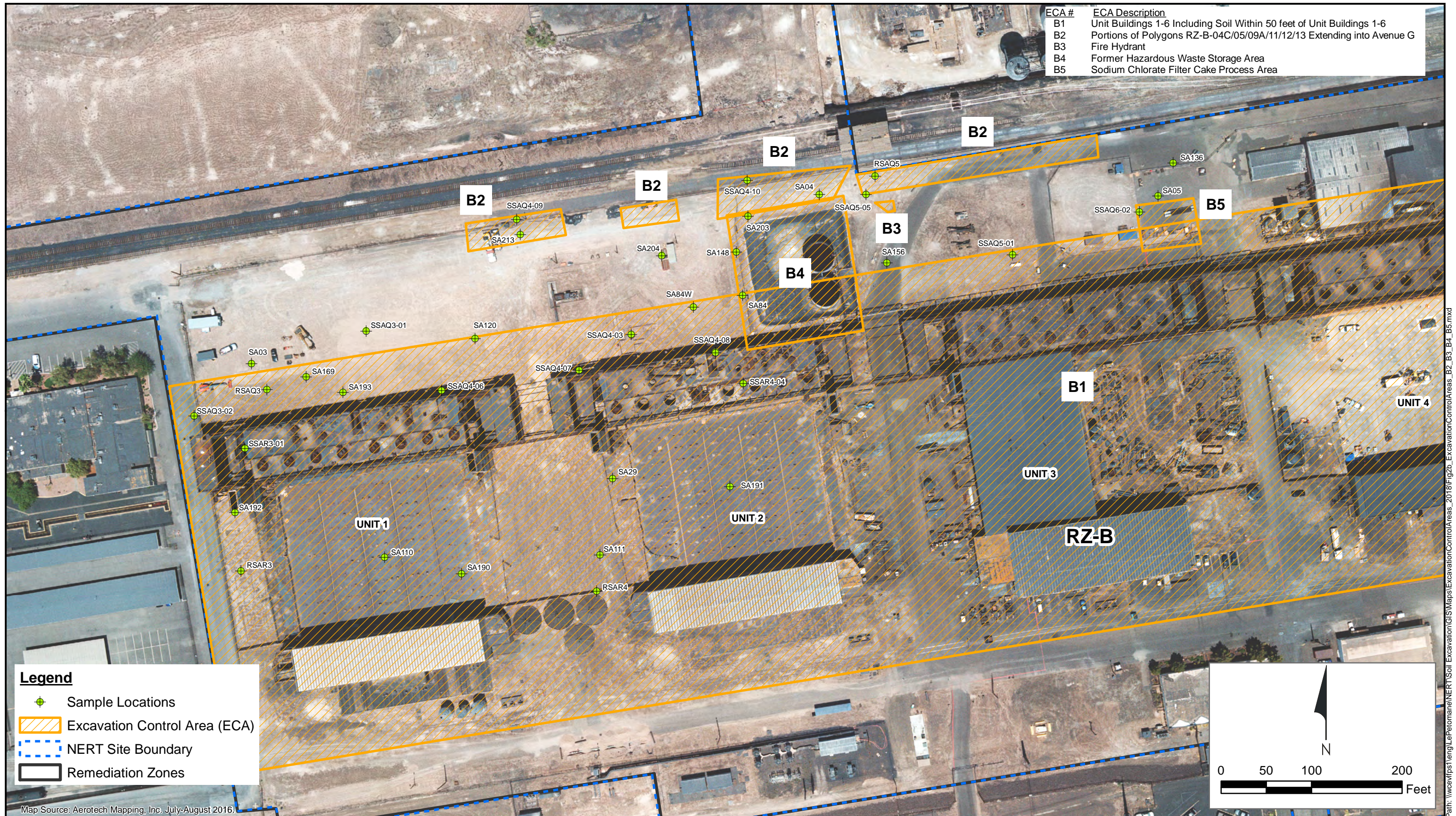
May 20, 2011



Excavation Control Areas in RZ-B (without Remediation Polygons)
 Nevada Environmental Response Trust Site, Henderson, Nevada

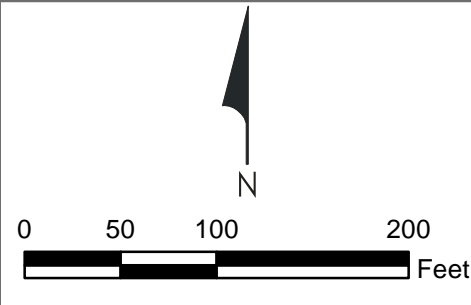
Figure
2a

Path: \\wcc\apps\eng\LePetoman\NERT\Soil_Excavation\GIS\Maps\ExcavationControlAreas_2018\Fig2a_ExcavationControlAreas_RZB_a.mxd



Legend

- Sample Locations
- Excavation Control Area (ECA)
- NERT Site Boundary
- Remediation Zones



Map Source: Aerotech Mapping, Inc. July-August 2016.

Path: \\wcc\apps\eng\LePetomane\NERT\Soil_Excavation\GIS\Maps\ExcavationControlAreas_2018\Fig2b_ExcavationControlAreas_B2_B3_B4_B5.mxd



Map Source: Aerotech Mapping, Inc. July-August 2016.



Excavation Control Areas B6 and B7
 Nevada Environmental Response Trust Site, Henderson, Nevada

Drafter: RS

Date: 3/12/2018

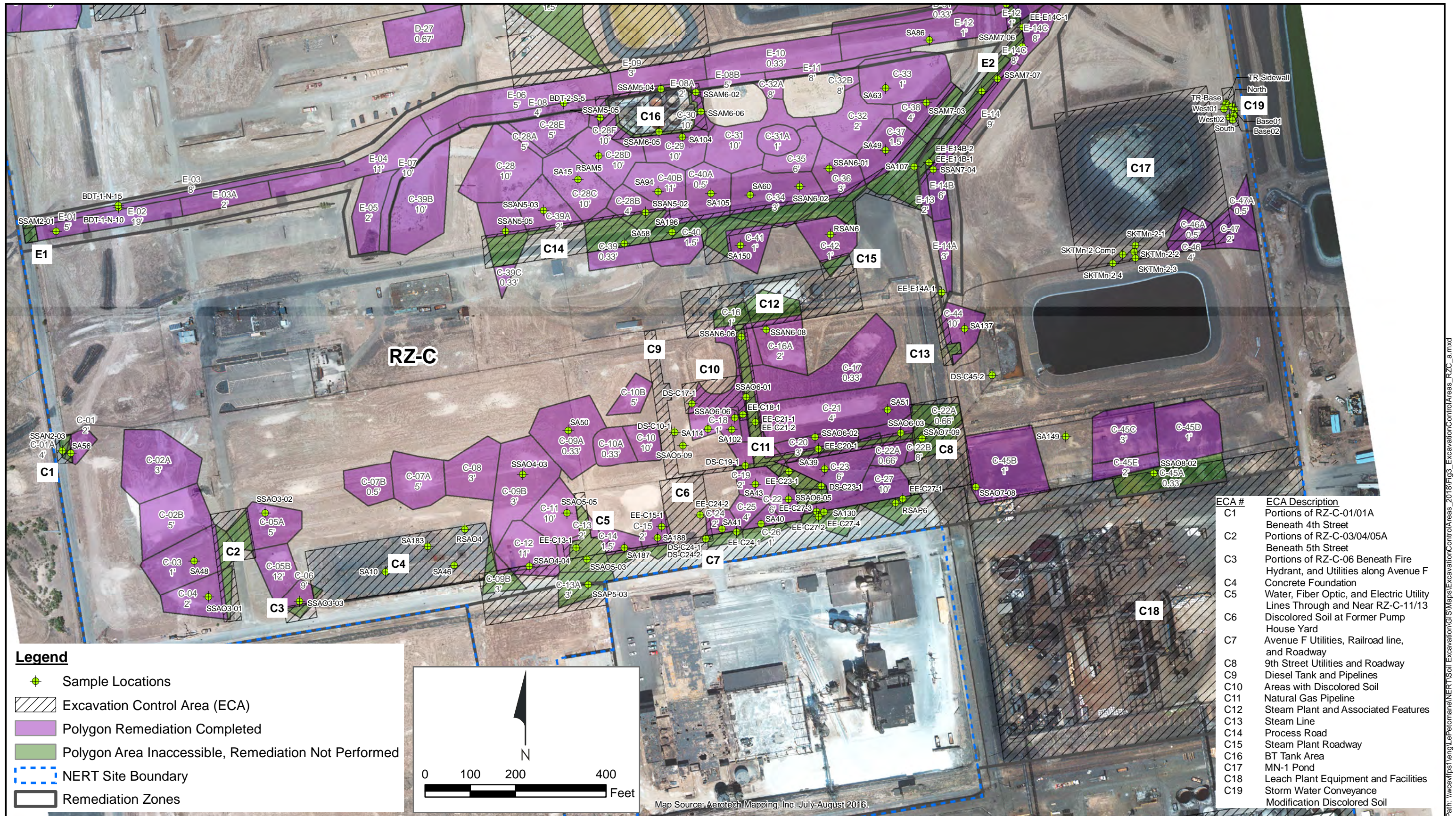
Contract Number: 1690006941

Approved by: DR

Revised:

Figure
2c

Path: \\wccaffps1\eng\LePetomane\NERT\Soil_Excavation\GIS\Maps\ExcavationControlAreas_2018\Fig2c_ExcavationControlAreas_B6_B7.mxd



Excavation Control Areas in RZ-C
 Nevada Environmental Response Trust Site, Henderson, Nevada

Drafter: RS

Date: 2/1/2018

Contract Number: 1690006941

Approved by: DR

Revised:

Path: \\wcc\apps\eng\LePetomane\NERT\Soil_Excavation\GIS\Maps\ExcavationControlAreas_2018\Fig3_ExcavationControlAreas_RZ-C_a.mxd

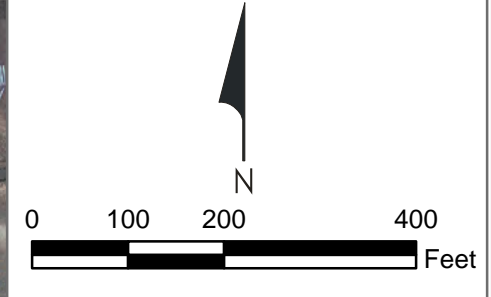


| ECA # | ECA Description |
|-------|--|
| C1 | Portions of RZ-C-01/01A Beneath 4th Street |
| C2 | Portions of RZ-C-03/04/05A Beneath 5th Street |
| C3 | Portions of RZ-C-06 Beneath Fire Hydrant, and Utilities along Avenue F |
| C4 | Concrete Foundation |
| C5 | Water, Fiber Optic, and Electric Utility Lines Through and Near RZ-C-11/13 |
| C6 | Discolored Soil at Former Pump House Yard |
| C7 | Avenue F Utilities, Railroad line, and Roadway |
| C8 | 9th Street Utilities and Roadway |
| C9 | Diesel Tank and Pipelines |
| C10 | Areas with Discolored Soil |
| C11 | Natural Gas Pipeline |
| C12 | Steam Plant and Associated Features |
| C13 | Steam Line |
| C14 | Process Road |
| C15 | Steam Plant Roadway |
| C16 | BT Tank Area |
| C17 | MN-1 Pond |
| C18 | Leach Plant Equipment and Facilities |
| C19 | Storm Water Conveyance Modification Discolored Soil |

Legend

- Sample Locations
- Excavation Control Area (ECA)
- NERT Site Boundary
- Remediation Zones

Map Source: Aerotech Mapping, Inc. July-August 2016.



Excavation Control Areas in RZ-C (without Remediation Polygons)
 Nevada Environmental Response Trust Site, Henderson, Nevada





Figure
3a

Drafter: RS Date: 2/1/2018 Contract Number: 1690006941 Approved by: DR Revised:

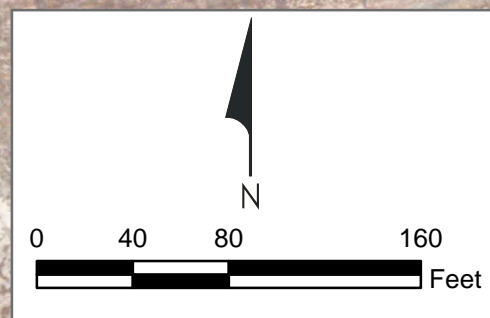
Path: \\wccaffps1\eng\LePetomane\NERT\Soil_Excavation\GIS\Maps\ExcavationControlAreas_2018\Fig3a_ExcavationControlAreas_RZC.mxd



Legend

-  Sample Locations
-  Excavation Control Area (ECA)
-  NERT Site Boundary
-  Remediation Zones

Map Source: Aerotech Mapping, Inc. July-August 2016.



Excavation Control Areas C1, C2, C3, and C4
 Nevada Environmental Response Trust Site, Henderson, Nevada

Figure
3b

Drafter: RS Date: 3/13/2018 Contract Number: 1690006941 Approved by: DR Revised:



| ECA # | ECA Description |
|-------|--|
| C5 | Water, Fiber Optic, and Electric Utility Lines Through and Near RZ-C-11/13 |
| C6 | Discolored Soil at Former Pump House Yard |
| C7 | Avenue F Utilities, Railroad line, and Roadway |
| C8 | 9th Street Utilities and Roadway |
| C9 | Diesel Tank and Pipelines |
| C10 | Areas with Discolored Soil |
| C11 | Natural Gas Pipeline |
| C12 | Steam Plant and Associated Features |
| C13 | Steam Line |

| Legend | |
|--------|-------------------------------|
| | Sample Locations |
| | Excavation Control Area (ECA) |
| | NERT Site Boundary |
| | Remediation Zones |

Map Source: Aerotech Mapping, Inc. July-August 2016.

Excavation Control Areas C5, C6, C7, C8, C9, C10, C11, C12 and C13
 Nevada Environmental Response Trust Site, Henderson, Nevada



Drafter: RS

Date: 3/13/2018

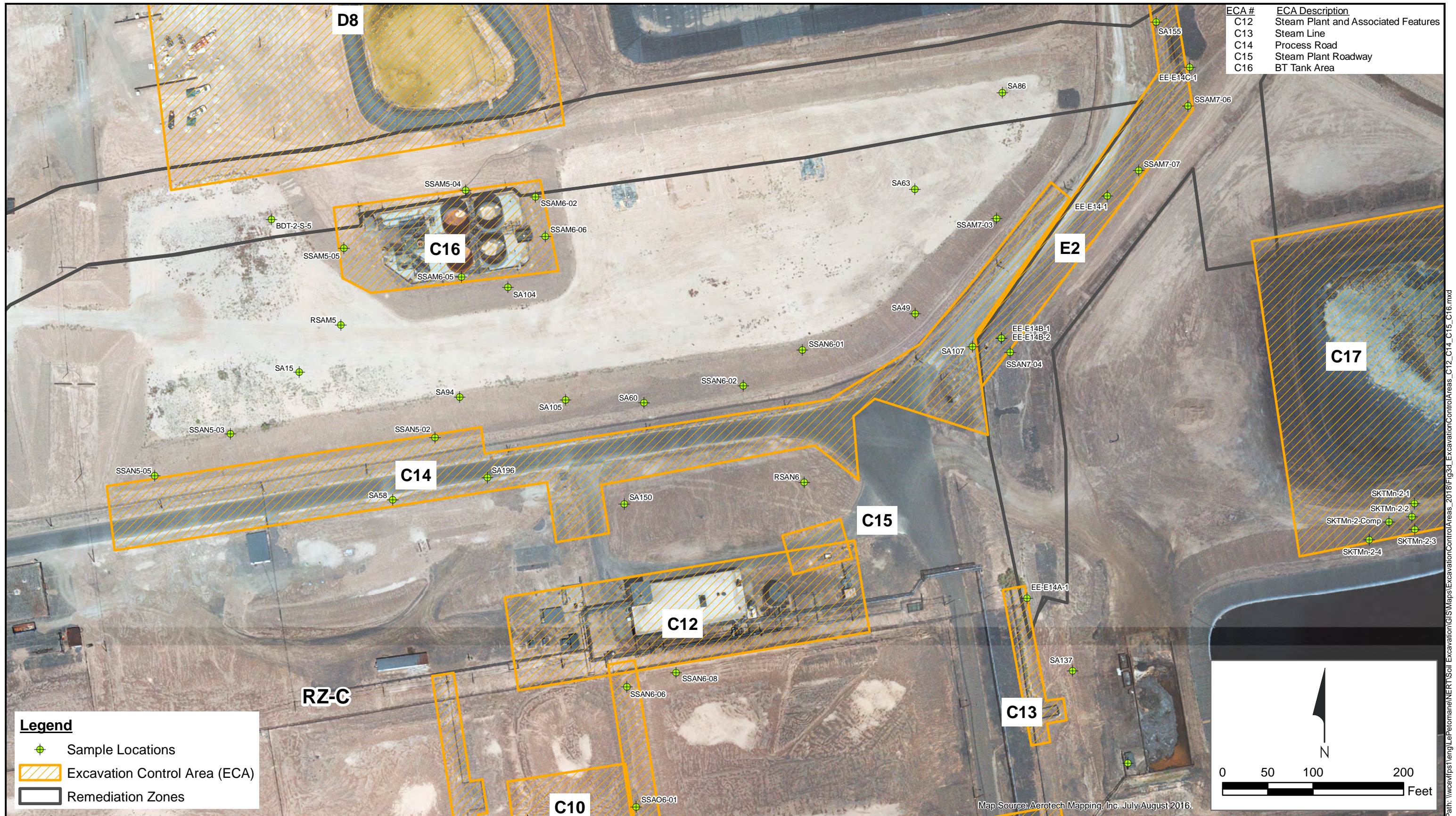
Contract Number: 1690006941

Approved by: DR

Revised:

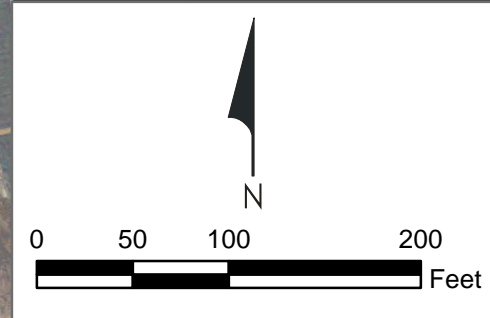
Figure
3c

Path: \\wcc\apps\eng\LePetomane\NERT\Soil_Excavation\GIS\Maps\ExcavationControlAreas_2018\Fig3c_ExcavationControlAreas_C5_C6_C7_C8_C9_C10_C11_C13.mxd



| ECA # | ECA Description |
|-------|-------------------------------------|
| C12 | Steam Plant and Associated Features |
| C13 | Steam Line |
| C14 | Process Road |
| C15 | Steam Plant Roadway |
| C16 | BT Tank Area |

| Legend | |
|--------|-------------------------------|
| | Sample Locations |
| | Excavation Control Area (ECA) |
| | Remediation Zones |



Map Source: Aerotech Mapping, Inc. July-August 2016.



Excavation Control Areas C12, C13, C14, C15, and C16

Nevada Environmental Response Trust Site, Henderson, Nevada

Figure
3d

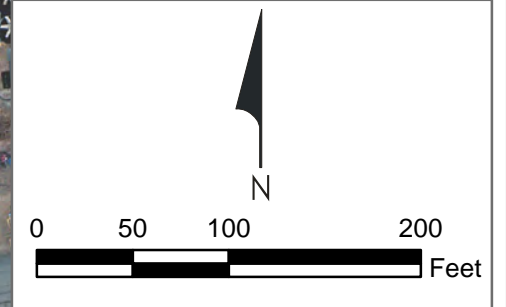
Drafter: RS Date: 3/13/2018 Contract Number: 1690006941 Approved by: DR Revised:

Path: \\wccaffps1\eng\LePetomane\NERT\Soil_Excavation\GIS\Maps\ExcavationControlAreas_2018\Fig3d_ExcavationControlAreas_C12_C14_C15_C16.mxd



| ECA # | ECA Description |
|-------|--|
| C17 | MN-1 Pond |
| C19 | Storm Water Conveyance Modification Discolored Soil |

| Legend | |
|--------|-------------------------------|
| | Sample Locations |
| | Excavation Control Area (ECA) |
| | NERT Site Boundary |
| | Remediation Zones |



Map Source: Aerotech Mapping, Inc. July-August 2016.



Excavation Control Areas C17 and C19
 Nevada Environmental Response Trust Site, Henderson, Nevada

Figure
3e

Drafter: RS Date: 3/13/2018 Contract Number: 1690006941 Approved by: DR Revised:

Path: \\wcc\apps\eng\LePetomane\NERT\Soil_Excavation\GIS\Maps\ExcavationControlAreas_2018\Fig3e_ExcavationControlAreas_C17_C19.mxd



| ECA # | ECA Description |
|-------|--------------------------------------|
| C18 | Leach Plant Equipment and Facilities |

Legend

- Sample Locations
- Excavation Control Area (ECA)
- NERT Site Boundary
- Remediation Zones

Map Source: Aerotech Mapping, Inc. July-August 2016.



Excavation Control Area C18
Nevada Environmental Response Trust Site, Henderson, Nevada

Drafter: RS

Date: 3/13/2018

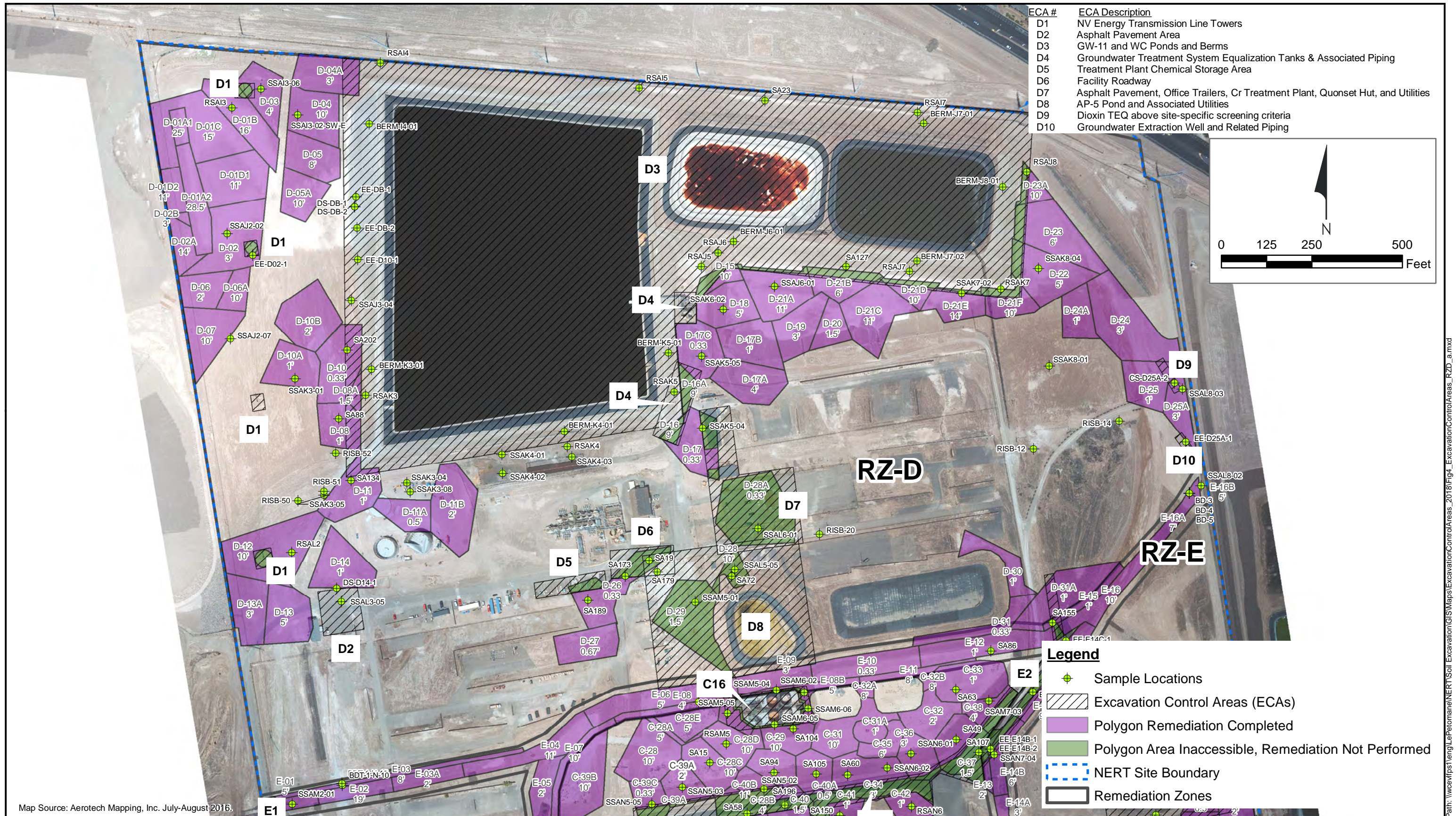
Contract Number: 1690006941

Approved by: DR

Revised:

Figure
3f

Path: \\wcc\apps\eng\LePetomane\NERT\Soil_Excavation\GIS\Maps\ExcavationControlAreas_2018\Fig3f_ExcavationControlAreas_C18.mxd



Map Source: Aerotech Mapping, Inc. July-August 2016.



Excavation Control Areas in RZ-D

Nevada Environmental Response Trust Site, Henderson, Nevada

Drafter: RS

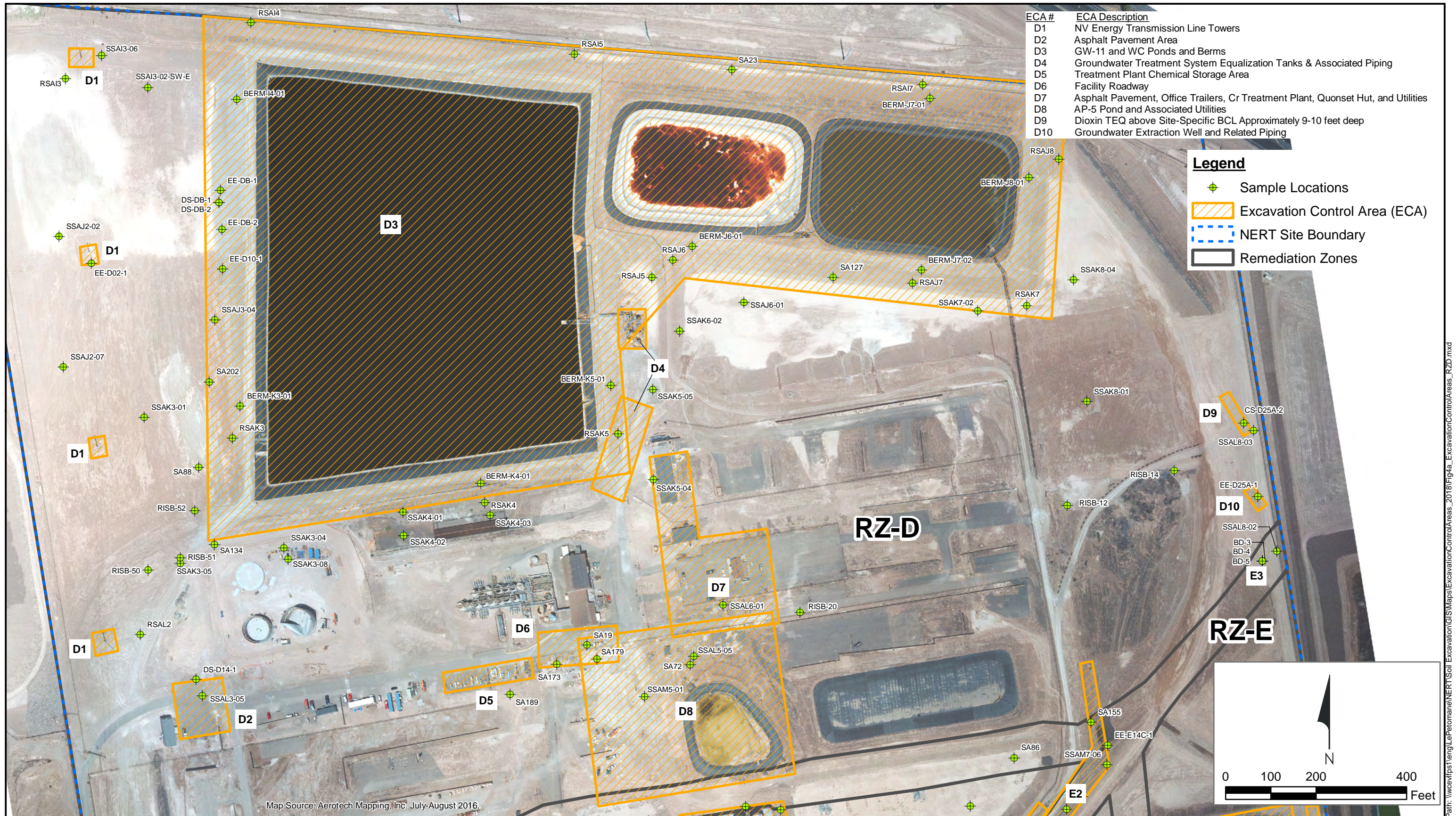
Date: 3/13/2018

Contract Number: 1690006941

Approved by: DR

Revised:

Path: \\wcc\apps\LePetomane\NERT\Soil_Excavation\GIS\Maps\ExcavationControlAreas_2018\Fig4_ExcavationControlAreas_RZD_a.mxd



Excavation Control Areas in RZ-D (without Remediation Polygons)
 Nevada Environmental Response Trust Site, Henderson, Nevada

Drafter: RS

Date: 3/13/2018

Contract Number: 1690006941

Approved by: DR





Revised:

Figure
4a

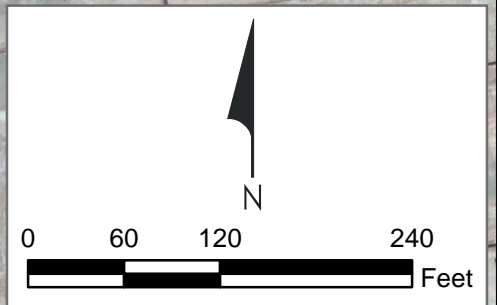
Path: \\wcc\apps\1\eng\LePetomane\NERT\Soil_Excavation\GIS\Maps\ExcavationControlAreas_2018\Fig4a_ExcavationControlAreas_RZD.mxd



Legend

-  Sample Locations
-  Excavation Control Area (ECA)
-  NERT Site Boundary
-  Remediation Zones

Map Source: Aerotech Mapping, Inc. July-August 2016.



Excavation Control Areas D1 and D2
Nevada Environmental Response Trust Site, Henderson, Nevada

Figure
4b

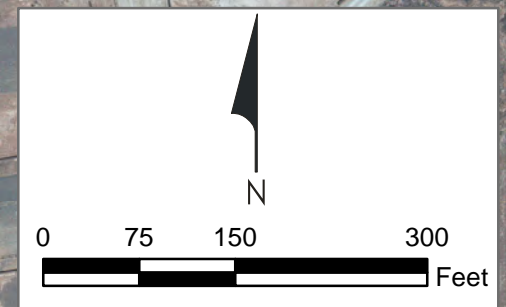
Drafter: RS Date: 3/13/2018 Contract Number: 1690006941 Approved by: Revised:

| ECA # | ECA Description |
|-------|---|
| D3 | GW-11 and WC Ponds and Berms |
| D4 | Groundwater Treatment System Equalization Tanks & Associated Piping |



Legend

- Sample Locations
- Excavation Control Area (ECA)
- NERT Site Boundary
- Remediation Zones

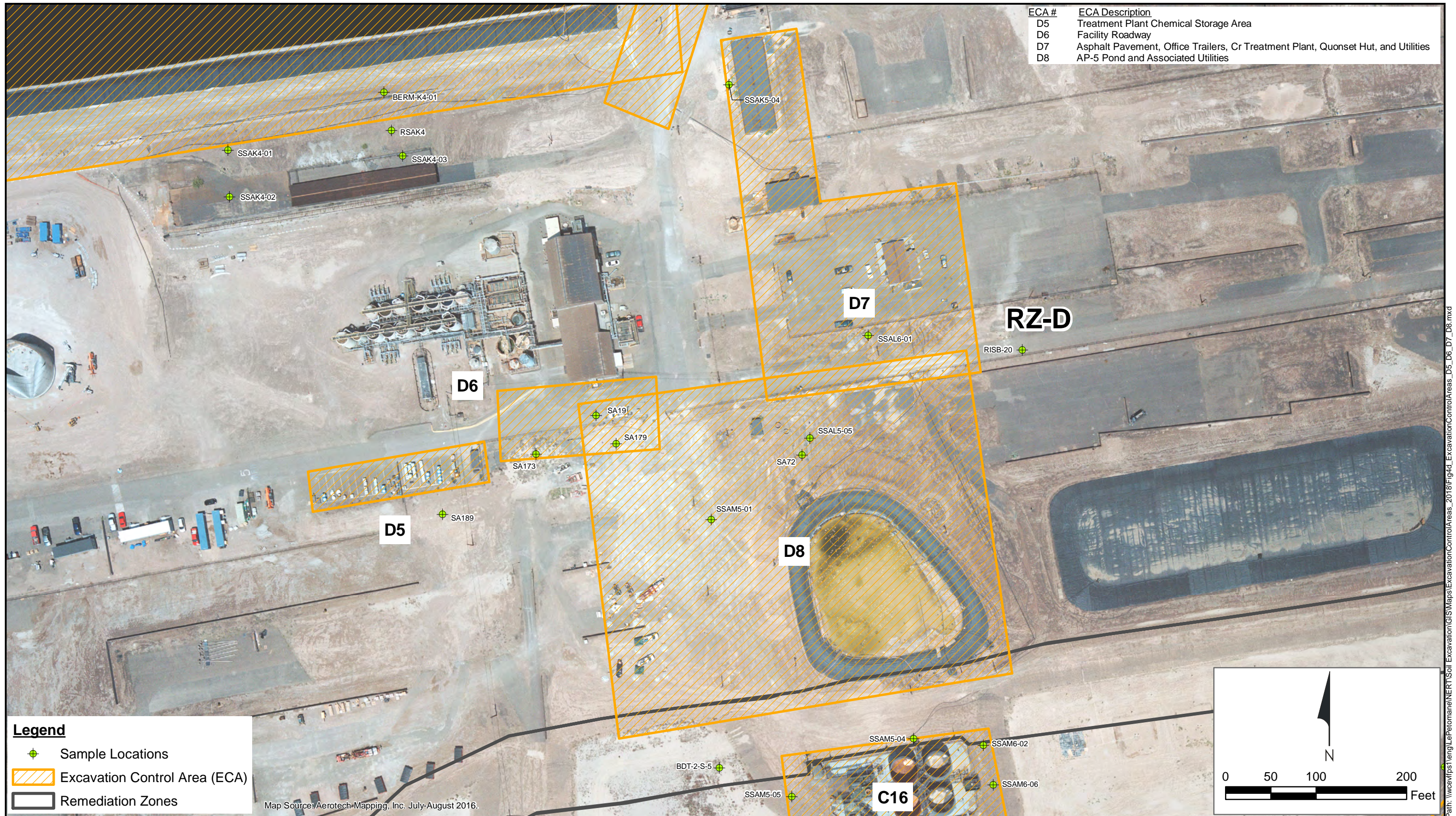


Excavation Control Areas D3 and D4
 Nevada Environmental Response Trust Site, Henderson, Nevada

Drafter: RS Date: 3/13/2018 Contract Number: 1690006941 Approved by: DR Revised:

Figure
4c

Path: \\wcc\apps\eng\LePetoman\NERT\Soil_Excavation\GIS\Maps\ExcavationControlAreas_2018\Fig4c_ExcavationControlAreas_D3_D4.mxd

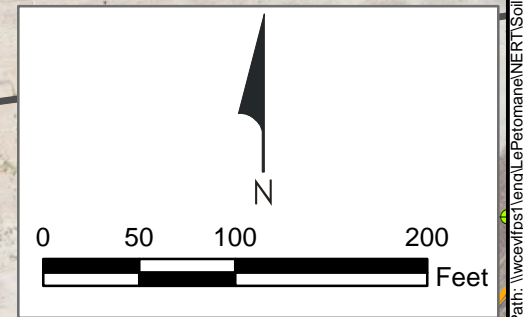


| ECA # | ECA Description |
|-------|---|
| D5 | Treatment Plant Chemical Storage Area |
| D6 | Facility Roadway |
| D7 | Asphalt Pavement, Office Trailers, Cr Treatment Plant, Quonset Hut, and Utilities |
| D8 | AP-5 Pond and Associated Utilities |

Legend

- Sample Locations
- Excavation Control Area (ECA)
- Remediation Zones

Map Source: Aerotech Mapping, Inc. July-August 2016.



Excavation Control Areas D5, D6, D7, and D8
 Nevada Environmental Response Trust Site, Henderson, Nevada

Figure
4d

Drafter: RS Date: 3/13/2018 Contract Number: 1690006941 Approved by: DR Revised:

Path: \\wcc\apps\eng\LePetoman\NERT\Soil_Excavation\GIS\Maps\ExcavationControlAreas_2018\Fig4d_ExcavationControlAreas_D5_D6_D7_D8.mxd

| ECA # | ECA Description |
|-------|---|
| D9 | Dioxin TEQ above site-specific screening criteria |
| D10 | Groundwater Extraction Well and Related Piping |



Legend

- Sample Locations
- Excavation Control Area (ECA)
- Removed ECA
- NERT Site Boundary
- Remediation Zones

Map Source: Aerotech Mapping, Inc. July-August 2016.

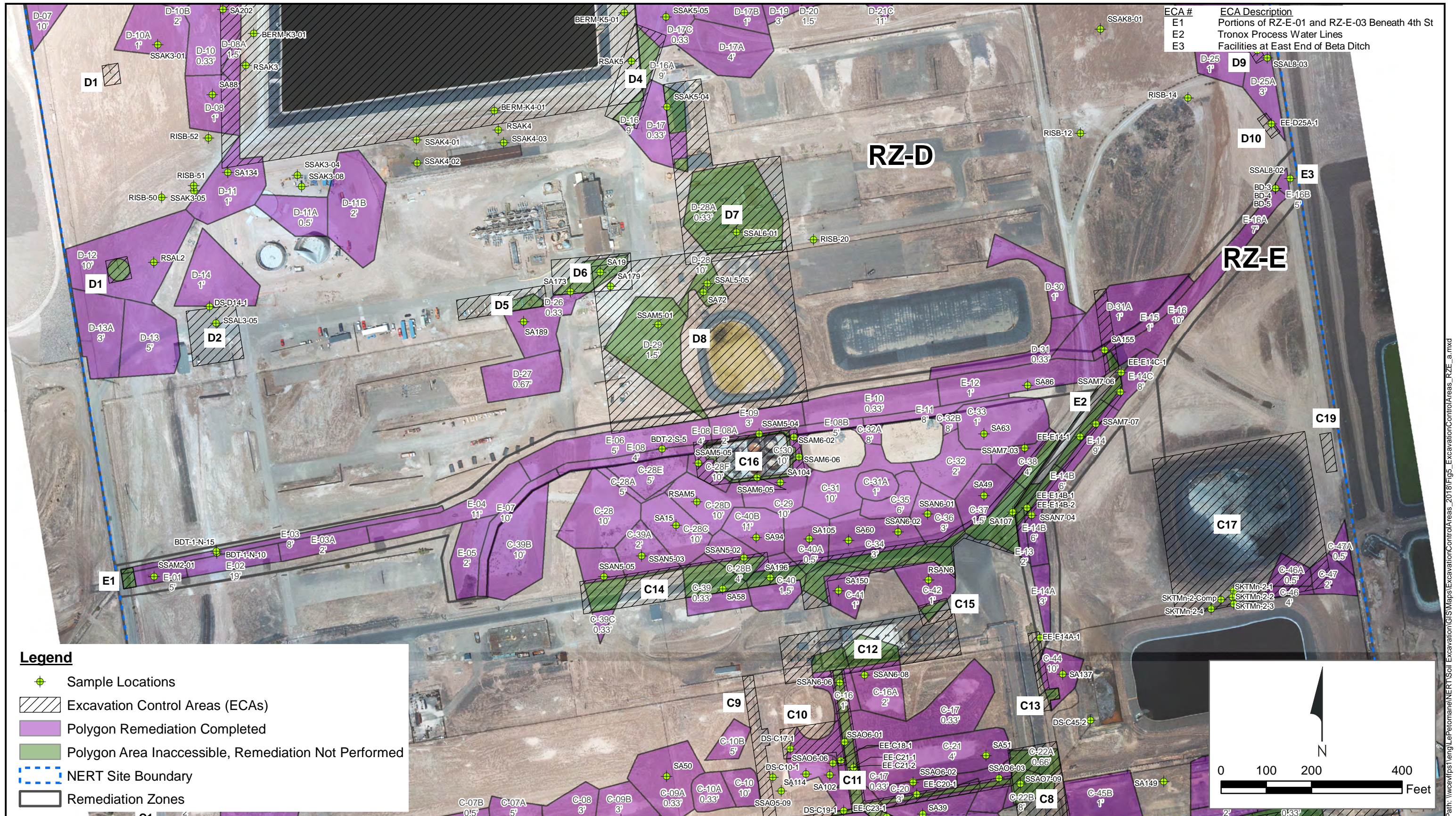


Excavation Control Areas D9 and D10
 Nevada Environmental Response Trust Site, Henderson, Nevada

Figure
4e

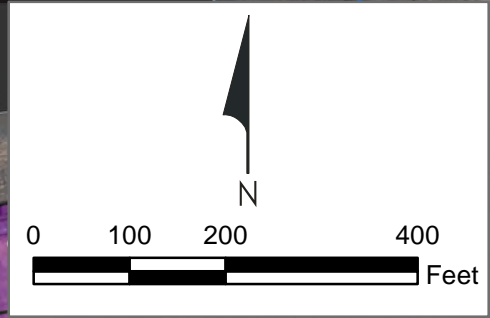
Drafter: RS Date: 3/13/2018 Contract Number: 1690006941 Approved by: DR Revised:

Path: \\wccaffps1\eng\LePetomane\NERT\Soil_Excavation\GIS\Maps\ExcavationControlAreas_2018\Fig4e_ExcavationControlAreas_D9_D10_D11_D12.mxd



Legend

- Sample Locations
- Excavation Control Areas (ECAs)
- Polygon Remediation Completed
- Polygon Area Inaccessible, Remediation Not Performed
- NERT Site Boundary
- Remediation Zones



Excavation Control Areas in RZ-E
 Nevada Environmental Response Trust Site, Henderson, Nevada

Figure
5

Path: \\wcc\apps\1\eng\LePetoman\NERT\Soil_Excavation\GIS\Maps\ExcavationControlAreas_2018\Fig5_ExcavationControlAreas_RZ_E_a.mxd



Legend

- Sample Locations
- Excavation Control Area (ECA)
- Removed ECA
- NERT Site Boundary
- Remediation Zones

Map Source: Aerotech Mapping, Inc. July-August 2016.



Excavation Control Areas in RZ-E (without Remediation Polygons)
 Nevada Environmental Response Trust Site, Henderson, Nevada





Figure
5a

Path: \\wcc\apps\eng\LePetomane\NERT\Soil_Excavation\GIS\Maps\ExcavationControlAreas_2018\Fig5a_ExcavationControlAreas_RZE.mxd

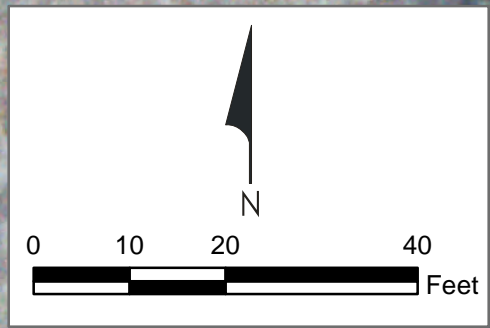
| ECA # | ECA Description |
|-------|--|
| E1 | Portions of RZ-E-01 and RZ-E-03 Beneath 4th St |



Legend

-  Sample Locations
-  Excavation Control Area (ECA)
-  NERT Site Boundary
-  Remediation Zones

Service Layer Credits: , May 20, 2011.



Excavation Control Area E1
 Nevada Environmental Response Trust Site, Henderson, Nevada

Figure
5b

Drafter: RS Date: 3/13/2018 Contract Number: 1690006941 Approved by: DR Revised:

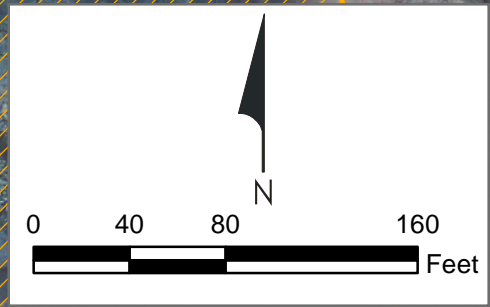
Path: \\wcc\apps\eng\LePetomane\NERT\Soil_Excavation\GIS\Maps\ExcavationControlAreas_2018\Fig5b_ExcavationControlAreas_E1.mxd

| ECA # | ECA Description |
|-------|----------------------------|
| E2 | Tronox Process Water Lines |



Legend

- Sample Locations
- Excavation Control Area (ECA)
- NERT Site Boundary
- Remediation Zones

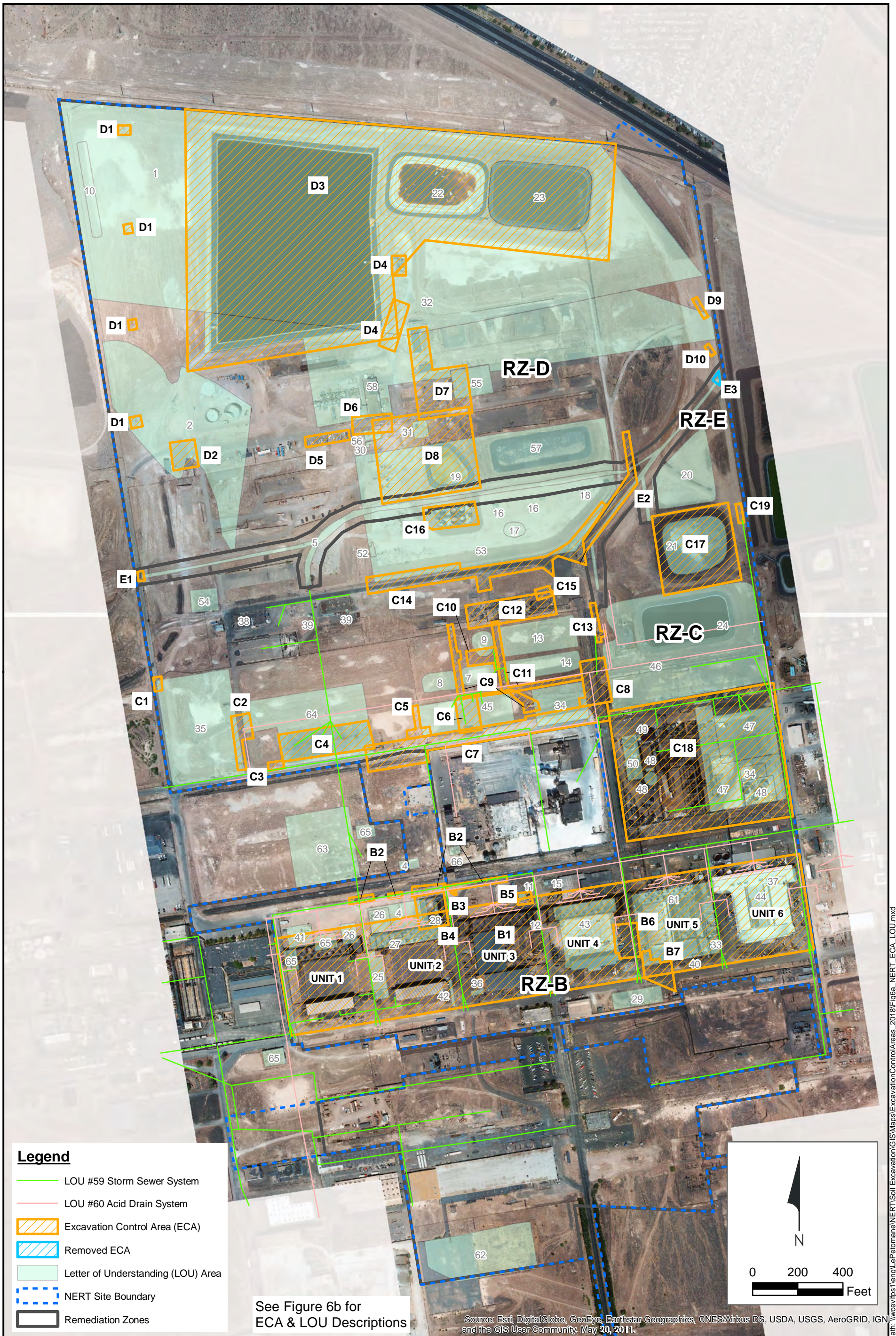


Excavation Control Area E2
 Nevada Environmental Response Trust Site, Henderson, Nevada

Figure
5c

Drafter: RS Date: 3/13/2018 Contract Number: 1690006941 Approved by: DR Revised:

Path: \\wcc\apps\leng\lepetomana\NERT\Soil_Excavation\GIS\Maps\ExcavationControlAreas_2018\Fig5c_ExcavationControlAreas_E2.mxd



Legend

- LOU #59 Storm Sewer System
- LOU #60 Acid Drain System
- Excavation Control Area (ECA)
- Removed ECA
- Letter of Understanding (LOU) Area
- NERT Site Boundary
- Remediation Zones

See Figure 6b for
ECA & LOU Descriptions

Source: Esri, DigitalGlobe, GeoEye, Earthstar Geographics, CNES/Airbus DS, USDA, USGS, AeroGRID, IGN and the GIS User Community, May 20, 2011.



ECA & LOU Locations

Nevada Environmental Response Trust Site, Henderson, Nevada

Figure
6a

Drafter: RS

Date: 3/15/2018

Contract Number: 1690006606

Approved by:

Revised:

| ECA # | ECA Description | LOU # | LOU Description |
|-------------|---|-------|---|
| RZ-B | | | |
| B1 | Unit Buildings 1-6 Including Soil Within 50 feet of Unit Buildings 1-6 | 1 | Trade Effluent Settling Ponds |
| B2 | Portions of Polygons RZ-B-04C/05/09A/11/12/13 Extending into Avenue G | 2 | Open Area Due South of Trade Effluent Settling Ponds |
| B3 | Fire Hydrant | 3 | Air Pollution Emissions Associated with Industrial Processes |
| B4 | Former Hazardous Waste Storage Area | 4 | Former Hardesty Chemical Company Site |
| B5 | Sodium Chlorate Filter Cake Process Area | 5 | On-Site Portion of Beta Ditch Including the Small Diversion Ditch |
| B6 | Soils Beneath Approximately 6 Feet Deep in Polygons RZ-B-20 and RZ-B-21 | 6 | Unnamed Drainage Ditch Segment |
| B7 | Soils Within Polygon RZ-B-22 | 7 | Old P-2 Surface Impoundment |
| RZ-C | | | |
| C1 | Portions of RZ-C-01/01A Beneath 4th Street | 8 | Old P-3 Surface Impoundment |
| C2 | Portions of RZ-C-03/04/05A Beneath 5th Street | 9 | New P-2 Pond and Associated Piping |
| C3 | Portions of RZ-C-06 Beneath Fire Hydrant, and Utilities along Avenue F | 10 | On-Site Hazardous Landfill |
| C4 | Concrete Foundation | 11 | Sodium Chlorate Filter Cake Area North of Unit 3 |
| C5 | Water, Fiber Optic, and Electric Utility Line Through and Near RZ-C-11/13 | 12 | Hazardous Waste Storage Area Between Units 3 and 4 |
| C6 | Discolored Soil at Former Pump House Yard | 13 | Closed Surface Impoundment S-1 |
| C7 | Avenue F Utilities, Railroad Line, and Roadway | 14 | Closed Surface Impoundment P-1 |
| C8 | 9th Street Utilities and Roadway | 15 | Platinum Drying Unit North of Unit 4 |
| C9 | Diesel Tank and Pipelines | 16 | Ponds AP-1, AP-2 and AP-3 and Associated Transfer Lines |
| C10 | Areas with Discolored Soil | 17 | Ponds AP-1, AP-2 and AP-3 and Associated Transfer Lines |
| C11 | Natural Gas Pipeline | 18 | Pond AP-4 |
| C12 | Steam Plant and Associated Features | 19 | Pond AP-5 |
| C13 | Steam Line | 20 | Pond C-1 and Associated Piping |
| C14 | Process Road | 21 | Pond MN-1 and Associated Piping |
| C15 | Stream Plant Roadway | 22 | Ponds WC-West and Associated Piping |
| C16 | BT Tank Area | 23 | Ponds WC-East and Associated Piping |
| C17 | MN-1 Pond | 24 | Leach Beds, Associated Conveyance Facilities and Former Manganese Tailings Area |
| C18 | Leach Plant Equipment and Facilities | 25 | Process Hardware Storage Area Between Units 1 and 2 |
| C19 | Stormwater Conveyance Modification Discolored Soil | 26 | Trash Storage Area North of Units 1 and 2 |
| RZ-D | | | |
| D1 | NV Energy Transmission Line Towers | 27 | PCB Storage Area - Unit 2 |
| D2 | Asphalt Pavement Area | 28 | Hazardous Waste Storage Area North of Unit 2 |
| D3 | GW-11 and WC Ponds and Berms | 29 | Solid Waste Dumpsters |
| D4 | Groundwater Treatment System Equalization Tanks & Associated Piping | 30 | Ammonium Perchlorate Area- Pad 35 |
| D5 | Treatment Plant Chemical Storage Area | 31 | Drum Crushing and Recycling Area |
| D6 | Facility Roadway | 32 | Groundwater Remediation Unit |
| D7 | Asphalt Pavement, Office Trailers, Cr Treatment Plant, Quonset Hut, and Utilities | 33 | Sodium Perchlorate Platinum By-Product Filter |
| D8 | AP-5 Pond and Associated Utilities | 34 | Manganese Tailings Area |
| D9 | Dioxin TEQ above Site-Specific BCL Approximately 9-10 feet deep | 35 | Truck Unloading Area |
| D10 | Groundwater Extraction Well and Related Piping | 36 | Former Satellite Accumulation Point - Unit 3, Maintenance Shop |
| RZ-E | | | |
| E1 | Portions of RZ-E-01 and RZ-E-03 Beneath 4th Street | 37 | Former Satellite Accumulation Point - Unit 6, Maintenance Shop |
| E2 | Tronox Process Water Lines | 38 | Former Satellite Accumulation Point - AP Laboratory |
| E3 | Facilities at East End of Beta Ditch | 39 | Former Satellite Accumulation Point - AP Maintenance Shop |
| Former E3 | Facilities at East End of Beta Ditch | 40 | PCB Transformer Spill |
| E3 | | 41 | Unit 1 Tenants - Stains |
| | | 42 | Unit 2 Salt Redler |
| | | 43 | Unit 4 and 5 Basements |
| | | 44 | Unit 6 Basements |
| | | 45 | Diesel Storage Tank Area - Stains |
| | | 46 | Former Old Main Cooling Tower and Recirculation Lines |
| | | 47 | Leach Plant Area Manganese Ore Piles |
| | | 48 | Leach Plant Area Anolyte Tanks |
| | | 49 | Leach Plant Area Sulfuric Acid Storage Tank |
| | | 50 | Leach Plant Area Leach Tanks |
| | | 51 | Leach Plant Area Transfer Lines To/From Unit 6 |
| | | 52 | AP Plant Area Screening Building, Dryer Building, and Associated Sump |
| | | 53 | AP Plant Area Tank Farm |
| | | 54 | AP Plant Area Change House/Laboratory and Septic Tank |
| | | 55 | AP Plant Area Storage Pads - Fire |
| | | 56 | AP Plant Area Old Building D-1 Washdown |
| | | 57 | AP Plant Area New Building D-1 Washdown |
| | | 58 | AP Plant SI and Transfer Lines To/From AP SI |
| | | 59 | Storm Sewer System |
| | | 60 | Acid Drain System |
| | | 61 | Old Sodium Chlorate Plant Decommissioning |
| | | 62 | State Industries Inc. Site, Including Impoundments and Catch Basin |
| | | 63 | J.B. Kellet, Inc. Trucking Site |
| | | 64 | Koch Materials Company |
| | | 65 | Assorted KMCC Tenants |
| | | 66 | Flintkote Company |
| | | 67 | Delbert Madsen and Estate of Delbery Madsen |

Path: \\wce\dfs1\eng\LePetomane\NERT\Soil Excavation\GIS\Maps\Excavation\ControlAreas_2018\Fig6b_



ECA & LOU Descriptions

Nevada Environmental Response Trust Site, Henderson, Nevada

Figure
6b

Drafter: EA

Date: 3/15/2018

Contract Number: 1690006941

Approved by:

Revised: