

August 24, 2017

TECHNICAL MEMORANDUM

To: Steve Clough
Nevada Environmental Response Trust

From: Jessica Donovan, Ramboll Environ
John Pekala, CEM#2347, Expires 9/20/2018, Ramboll Environ

Re: **RI Phase 2 Modification No. 8**
Nevada Environmental Response Trust Site
Henderson, Nevada
Ramboll Environ Project No. 21-41400C, M03B

This Technical Memorandum presents Ramboll Environ's recommended Modification No. 8 to the scope of work for the Remedial Investigation (RI) Phase 2 Investigation currently in progress at the Nevada Environmental Response Trust Site (the "Site") located in Henderson, Nevada. Based on lithology and soil sample concentrations encountered during drilling of pilot borings, we are recommending small modifications to the well screen intervals in three of the planned Site monitoring wells (M-224, M-227, and M-228). The wells will be installed in accordance with the procedures in the approved Field Sampling Plan (FSP).

The well construction modifications and the rationale for the modifications are summarized in Table 1, and the well locations are shown on Figure 1. As part of the scope of work for the RI Phase 2 Investigation, clustered monitoring wells were planned to be installed adjacent to soil borings RI-3 and RI-4, which are located east of the DNAPL plume identified by Montrose during previous investigations. The wells and their initial planned screen intervals are shown below. For well M-224 adjacent to boring RI-3 and wells M-227 and M-228 adjacent to boring RI-4, the well screens are being raised to align with the actual depth of the target zone at each boring based on conditions encountered during drilling and preliminary soil concentration data.

Adjacent to boring RI-3

Well M-223 (40-55 ft) – no change
Well M-224 (65-85 ft) – modify screen interval to 60-80 ft
Well M-225 (100-120 ft) – no change

Adjacent to boring RI-4

Well M-226 (40-55 ft) – no change
Well M-227 (65-85 ft) – modify screen interval to 60-80 ft
Well M-228 (100-120 ft) – modify screen interval to 95-115 ft

Please contact us should you have any questions about the modified well construction details presented in this technical memorandum.

Attachments

Table 1 Modified New Groundwater Monitoring Well Construction Details

Figure 1 RI Phase 2 Investigation - Modification No. 8

TABLE 1. MODIFIED NEW GROUNDWATER MONITORING WELL CONSTRUCTION DETAILS

RI Phase 2 Modification No. 8

Nevada Environmental Response Trust Site; Henderson, Nevada

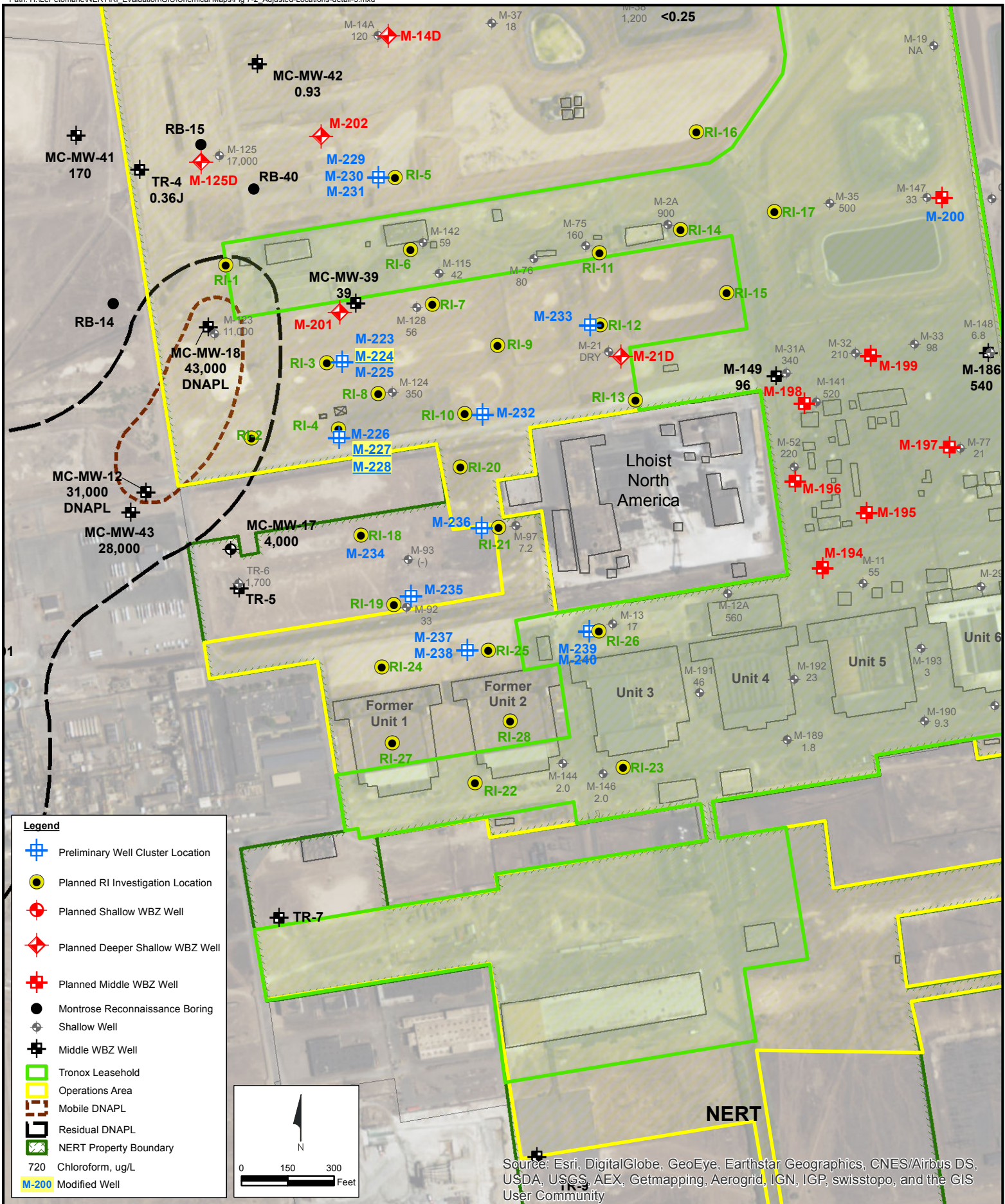
Monitoring Well ID	NERT On-Site Location	Initial Planned Well Construction Details						Recommended Modifications						
		Pilot Boring Depth (ft bgs)	Casing Diameter and Type	Screen Size (inches)	Screened Interval (ft bgs)	Sand Pack Interval (ft bgs)	Sand Pack Size	Pilot Boring Depth (ft bgs)	Casing Diameter and Type	Screen Size (inches)	Screened Interval (ft bgs)	Sand Pack Interval (ft bgs)	Sand Pack Size	Rationale for Modification
New Wells Adjacent to RI Borings														
M-224	Adjacent to RI-3	85	4" PVC	0.01	65-85	63-85	No. 2/12	80	4" PVC	0.01	60-80	58-80	No. 2/12	[a]
M-227	Adjacent to RI-4	85	4" PVC	0.01	65-85	63-85	No. 2/12	80	4" PVC	0.01	60-80	58-80	No. 2/12	[a]
M-228		120	4" PVC	0.01	100-120	98-120	No. 2/12	115	4" PVC	0.01	95-115	93-115	No. 2/12	[a]

Notes:

See Figure 1 for well locations.

ft bgs: feet below ground surface

[a] Well screen raised to intercept an interval of higher COPC concentrations based on adjacent RI boring soil samples and lithology.



RI Phase 2 Investigation - Modification No. 8
 Nevada Environmental Response Trust Site
 Henderson, Nevada

Figure
1