




Legend

-  Excavation Control Areas (ECAs)
-  Polygon Remediation Completed
-  Polygon Area Inaccessible, Remediation Not Performed

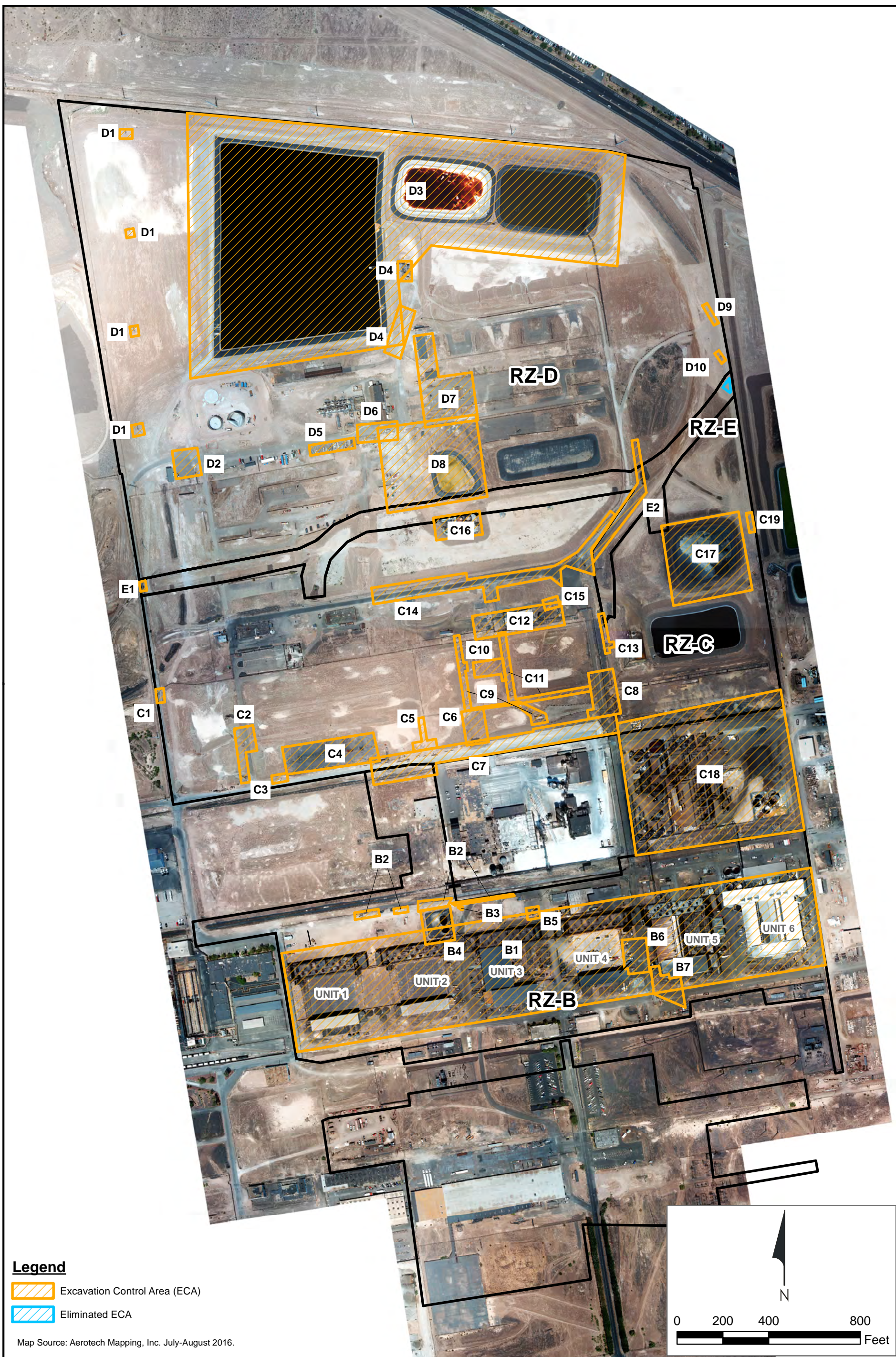
See Figure 6b for Excavation Control Area (ECA) Descriptions.

Map Source: Aerotech Mapping, Inc. July-August 2016.

Excavation Control Areas - All Remediation Zones
 Nevada Environmental Response Trust Site, Henderson, Nevada

Figure **1**

Drafter: EA/RS Date: 12/14/2016 Contract Number: 21-32100FA Approved by: Revised:

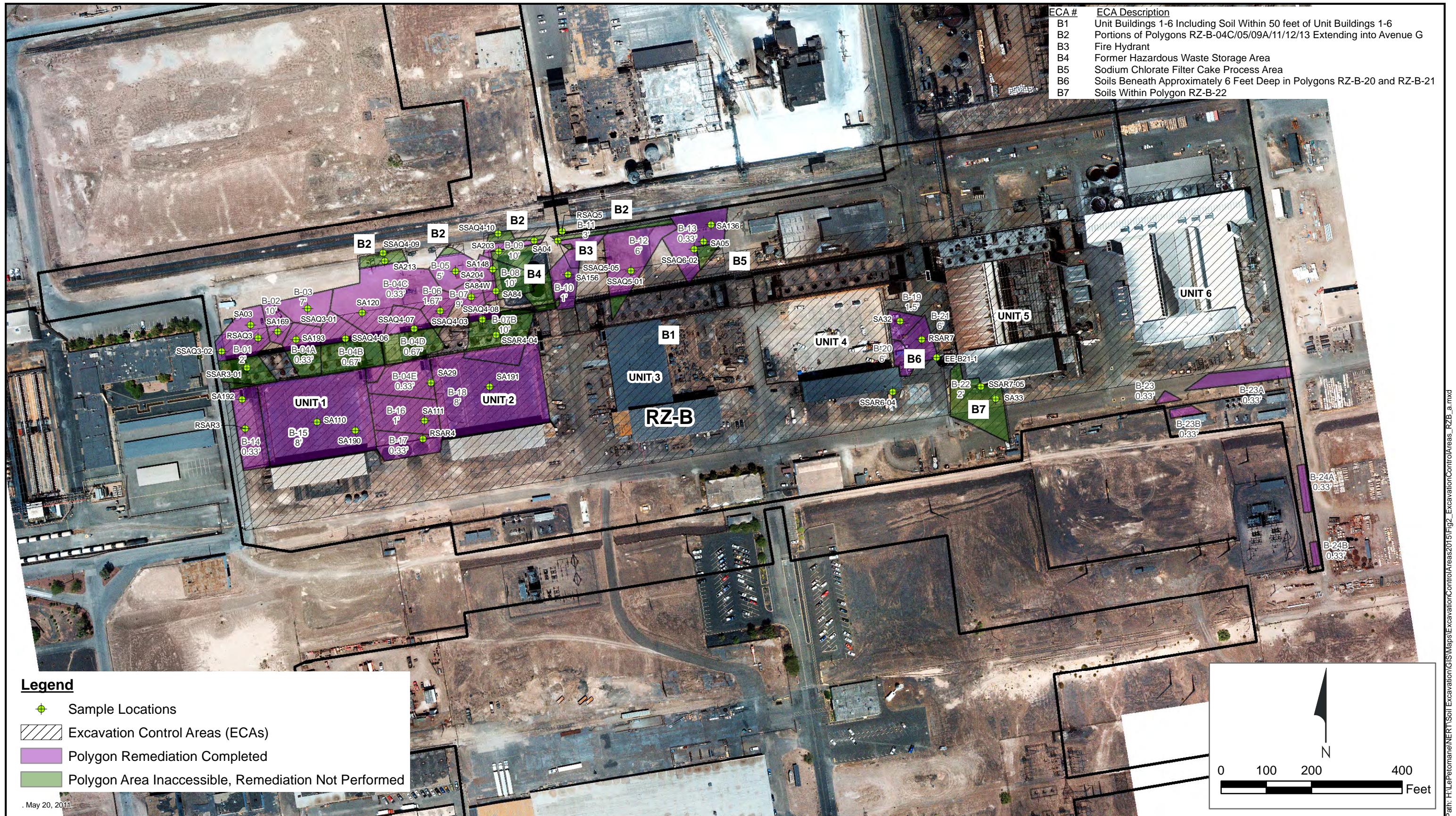


Excavation Control Areas - All Remediation Zones
 Nevada Environmental Response Trust Site
 Henderson, Nevada

Figure
1a



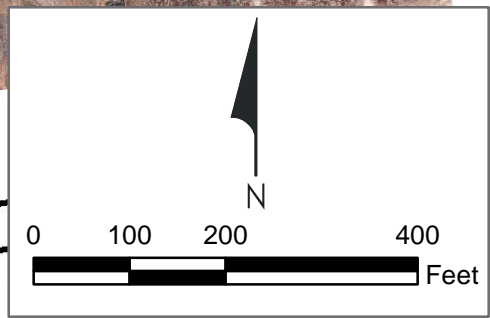
Drafter: RS Date: 12/12/2016 Contract Number: 21-37300C Approved by: Revised:



ECA #	ECA Description
B1	Unit Buildings 1-6 Including Soil Within 50 feet of Unit Buildings 1-6
B2	Portions of Polygons RZ-B-04C/05/09A/11/12/13 Extending into Avenue G
B3	Fire Hydrant
B4	Former Hazardous Waste Storage Area
B5	Sodium Chlorate Filter Cake Process Area
B6	Soils Beneath Approximately 6 Feet Deep in Polygons RZ-B-20 and RZ-B-21
B7	Soils Within Polygon RZ-B-22

Legend

	Sample Locations
	Excavation Control Areas (ECAs)
	Polygon Remediation Completed
	Polygon Area Inaccessible, Remediation Not Performed



May 20, 2011

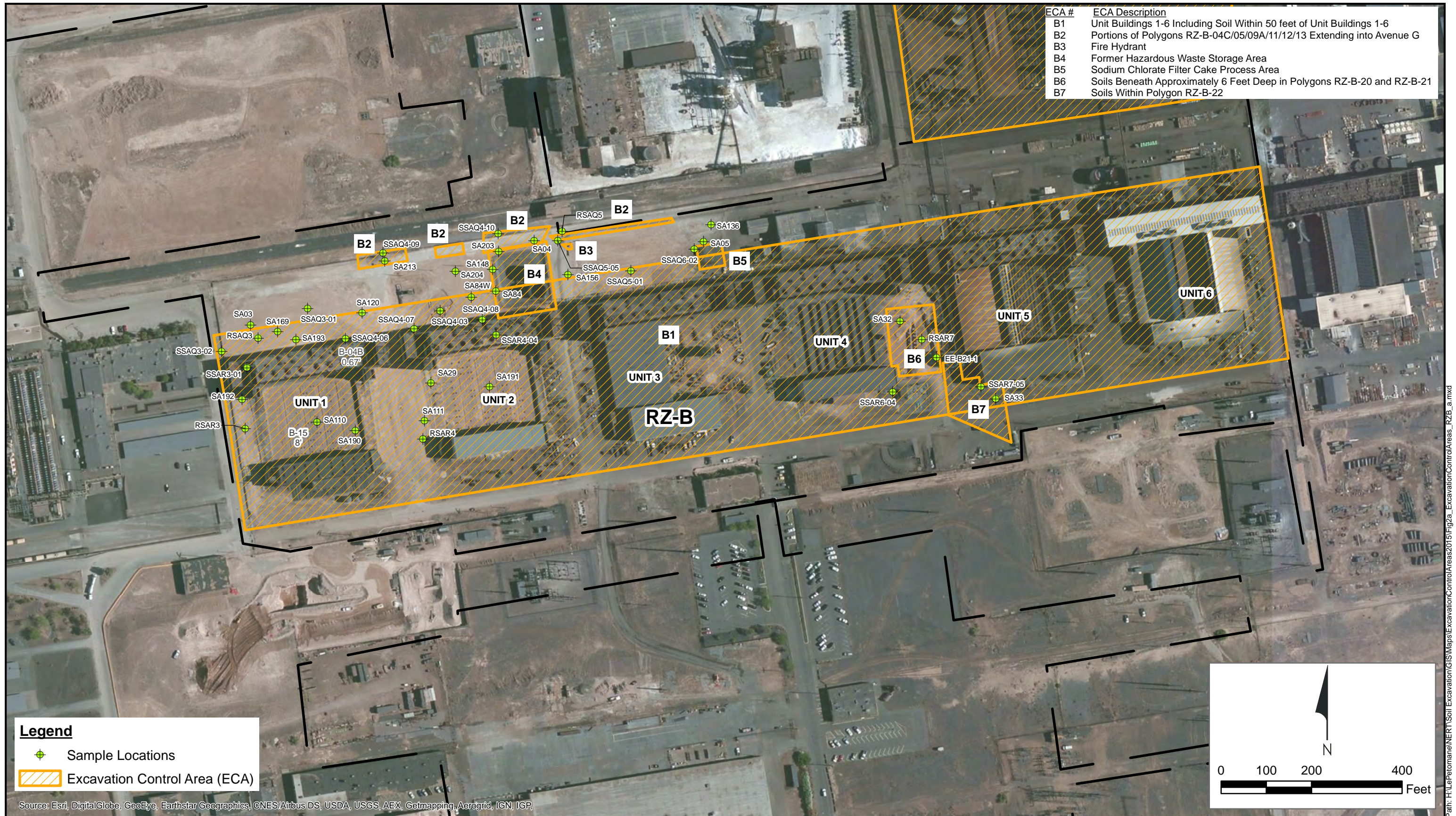


Excavation Control Areas in RZ-B
 Nevada Environmental Response Trust Site, Henderson, Nevada

Figure
2

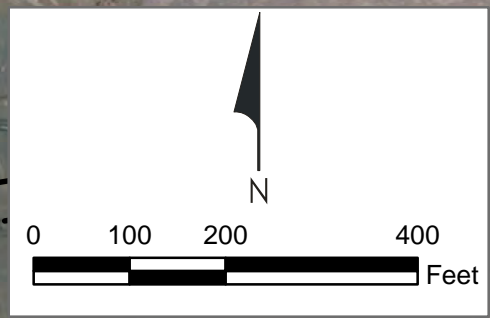
Drafter: EMcC Date: 9/30/2013 Contract Number: 21-32100FA Approved by: DR Revised:

Path: H:\LePetomane\NERT\Soil_Excavation\GIS\Map\ExcavationControlAreas2015\Fig2_ExcavationControlAreas_RZB_a.mxd



Legend
 ● Sample Locations
 ▨ Excavation Control Area (ECA)

Source: Esri, DigitalGlobe, GeoEye, Earthstar Geographics, CNES/Airbus DS, USDA, USGS, AEX, Getmapping, Aerogrid, IGN, IGP,



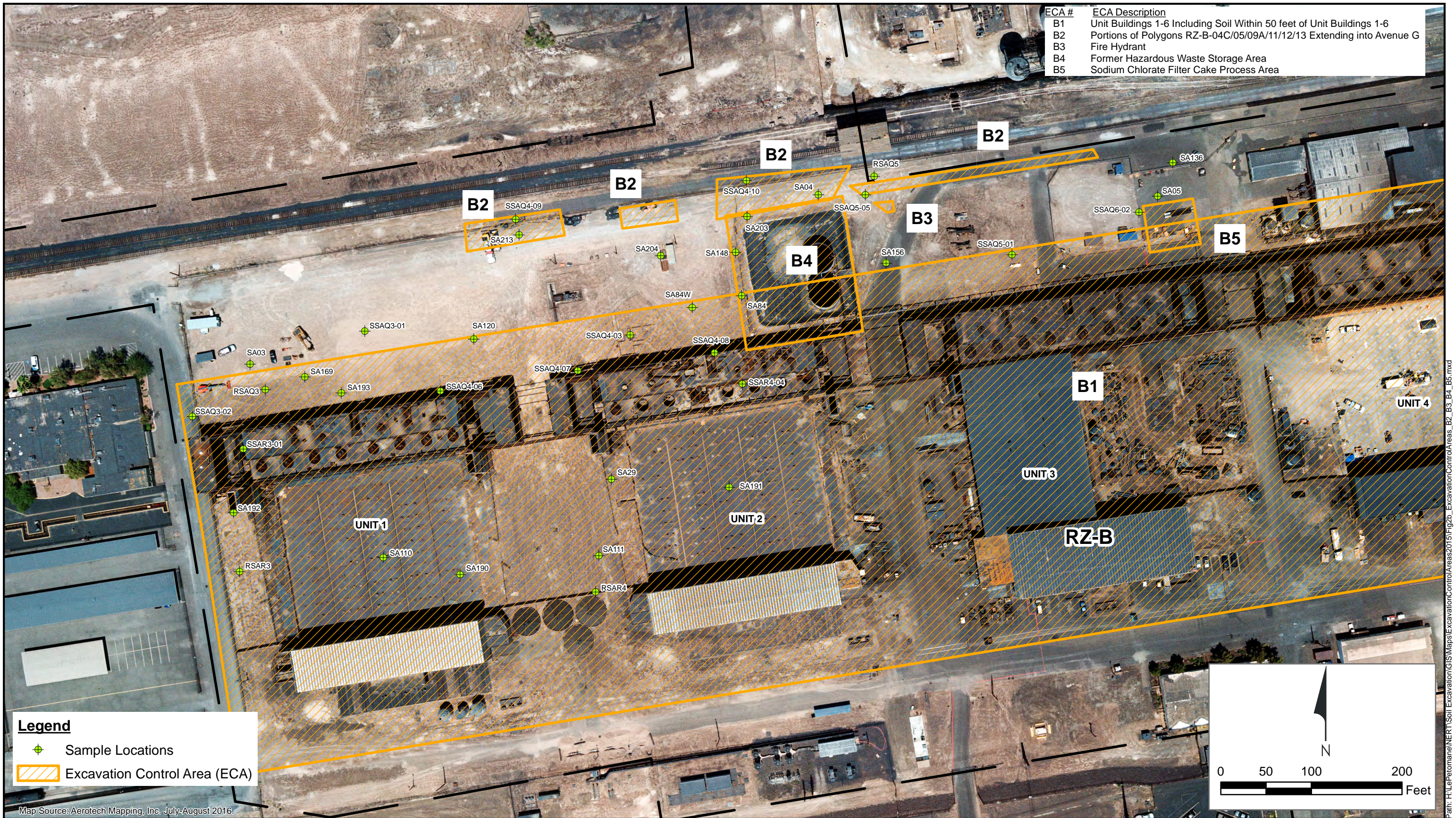
Excavation Control Areas in RZ-B (without Remediation Polygons)
 Nevada Environmental Response Trust Site, Henderson, Nevada

Figure
2a

Drafter: RS Date: 9/30/2013 Contract Number: 21-32100FA Approved by: DR Revised:

Path: H:\LePetoman\NERT\Soil_Excavation\GIS\Maps\ExcavationControlAreas2015\Fig2a_ExcavationControlAreas_RZ-B_a.mxd

ECA #	ECA Description
B1	Unit Buildings 1-6 Including Soil Within 50 feet of Unit Buildings 1-6
B2	Portions of Polygons RZ-B-04C/05/09A/11/12/13 Extending into Avenue G
B3	Fire Hydrant
B4	Former Hazardous Waste Storage Area
B5	Sodium Chlorate Filter Cake Process Area



Legend

- + Sample Locations
- Excavation Control Area (ECA)

N

0 50 100 200

Feet

Map Source: Aerotech Mapping, Inc. July-August 2016.

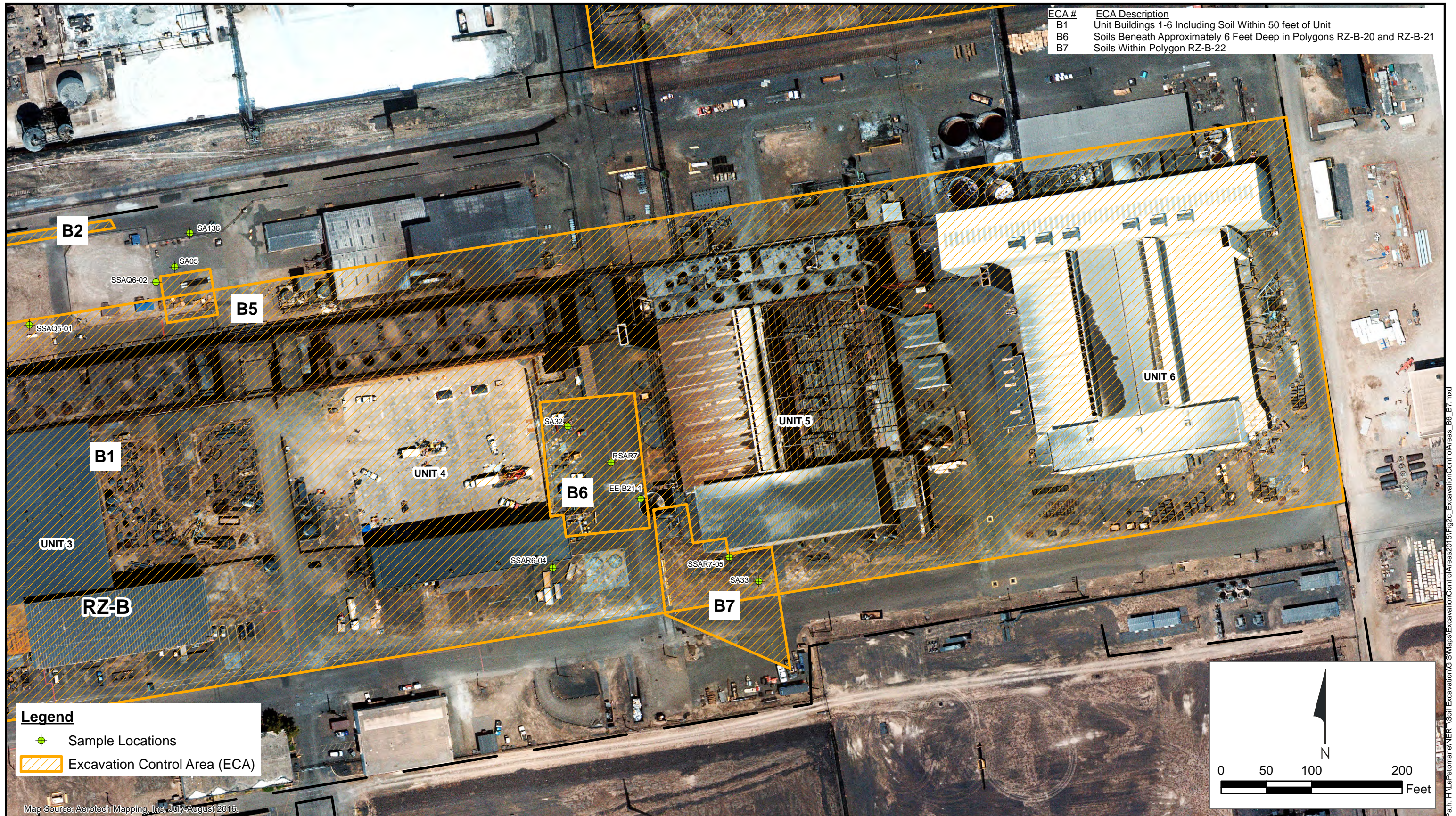


Excavation Control Areas B2, B3, B4, and B5
 Nevada Environmental Response Trust Site, Henderson, Nevada

Figure
2b

Drafter: RS Date: 10/5/2016 Contract Number: 21-32100FA Approved by: DR Revised:

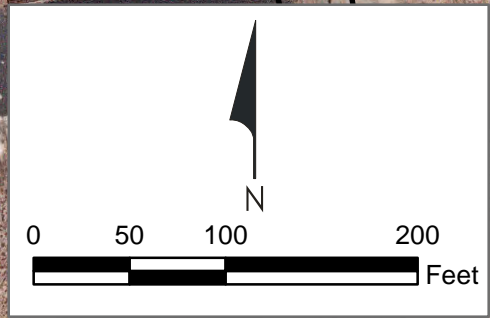
Path: H:\LePetoman\NERT\Soil_Excavation\GIS\Map\ExcavationControlAreas2015\Fig2b_ExcavationControlAreas_B2_B3_B4_B5.mxd



ECA #	ECA Description
B1	Unit Buildings 1-6 Including Soil Within 50 feet of Unit
B6	Soils Beneath Approximately 6 Feet Deep in Polygons RZ-B-20 and RZ-B-21
B7	Soils Within Polygon RZ-B-22

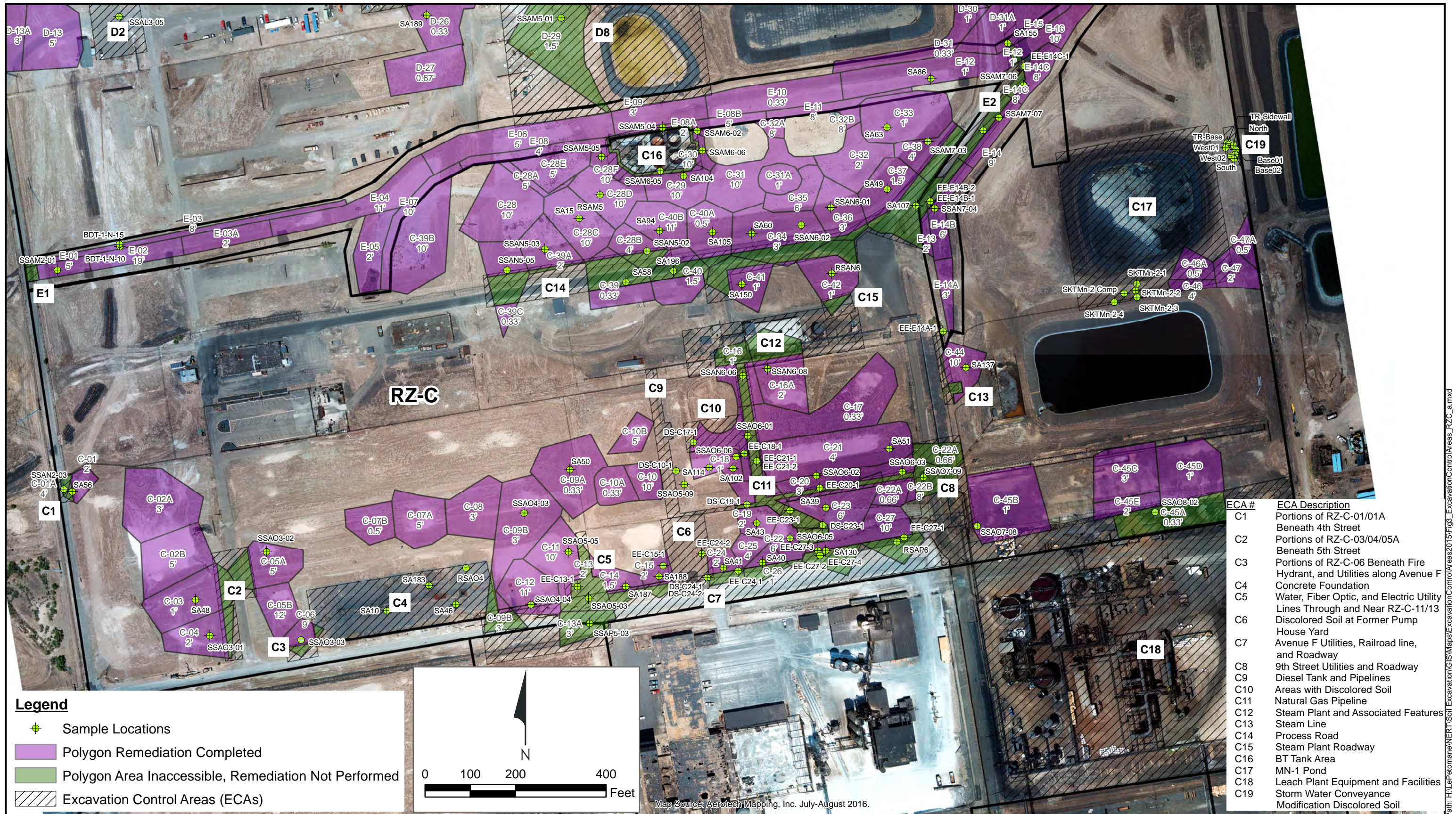
Legend

- Sample Locations
- Excavation Control Area (ECA)



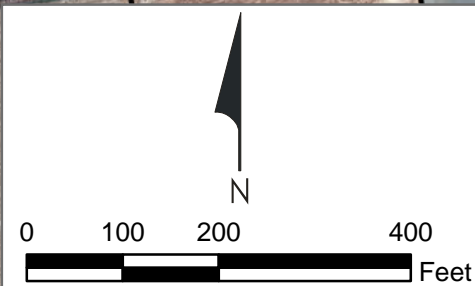
Map Source: Aerotech Mapping, Inc. July-August, 2016.

Path: H:\Leifeman\NERT\Soil_Excavation\GIS\Map\ExcavationControlAreas2015\Fig2c_ExcavationControlAreas_B6_B7.mxd



Legend

- Sample Locations
- Polygon Remediation Completed
- Polygon Area Inaccessible, Remediation Not Performed
- Excavation Control Areas (ECAs)



ECA #	ECA Description
C1	Portions of RZ-C-01/01A Beneath 4th Street
C2	Portions of RZ-C-03/04/05A Beneath 5th Street
C3	Portions of RZ-C-06 Beneath Fire Hydrant, and Utilities along Avenue F
C4	Concrete Foundation
C5	Water, Fiber Optic, and Electric Utility Lines Through and Near RZ-C-11/13
C6	Discolored Soil at Former Pump House Yard
C7	Avenue F Utilities, Railroad line, and Roadway
C8	9th Street Utilities and Roadway
C9	Diesel Tank and Pipelines
C10	Areas with Discolored Soil
C11	Natural Gas Pipeline
C12	Steam Plant and Associated Features
C13	Steam Line
C14	Process Road
C15	Steam Plant Roadway
C16	BT Tank Area
C17	MN-1 Pond
C18	Leach Plant Equipment and Facilities
C19	Storm Water Conveyance Modification Discolored Soil

Map Source: Aerotech Mapping, Inc. July-August 2016.



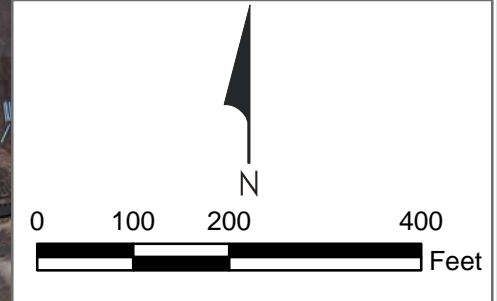
Excavation Control Areas in RZ-C
 Nevada Environmental Response Trust Site, Henderson, Nevada

Drafter: RS Date: 9/30/2013 Contract Number: 21-32100FA Approved by: DR Revised:

Path: H:\LePedemane\NERT\Soil Excavation\GIS\Map\ExcavationControlAreas2015\Fig3_ExcavationControlAreas_RZC_a.mxd



ECA #	ECA Description
C1	Portions of RZ-C-01/01A
C2	Beneath 4th Street
C3	Portions of RZ-C-03/04/05A
C4	Beneath 5th Street
C5	Portions of RZ-C-06 Beneath Fire Hydrant, and Utilities along Avenue F
C6	Concrete Foundation
C7	Water, Fiber Optic, and Electric Utility Lines Through and Near RZ-C-11/13
C8	Discolored Soil at Former Pump House Yard
C9	Avenue F Utilities, Railroad line, and Roadway
C10	9th Street Utilities and Roadway
C11	Diesel Tank and Pipelines
C12	Areas with Discolored Soil
C13	Natural Gas Pipeline
C14	Steam Plant and Associated Features
C15	Steam Line
C16	Process Road
C17	Steam Plant Roadway
C18	BT Tank Area
C19	MN-1 Pond
	Leach Plant Equipment and Facilities
	Storm Water Conveyance
	Modification Discolored Soil



Legend

- Sample Locations
- Excavation Control Area (ECA)

Map Source: Aerotech Mapping, Inc. July-August 2016.



Path: H:\LePetomane\NERT\Soil_Excavation\GIS\Map\ExcavationControlAreas\2015\Fig3a_ExcavationControlAreas_RZC.mxd

ECA #	ECA Description
C1	Portions of RZ-C-01/01A Beneath 4th Street
C2	Portions of RZ-C-03/04/05A Beneath 5th Street
C3	Portions of RZ-C-06 Beneath Fire Hydrant, and Utilities along Avenue F
C4	Concrete Foundation



Legend

- Sample Locations
- Excavation Control Area (ECA)

Map Source: Aerotech Mapping, Inc. July-August 2016.



Excavation Control Areas C1, C2, C3, and C4
 Nevada Environmental Response Trust Site, Henderson, Nevada

Figure
3b

Drafter: RS Date: 10/5/2016 Contract Number: 21-32100FA Approved by: DR Revised:

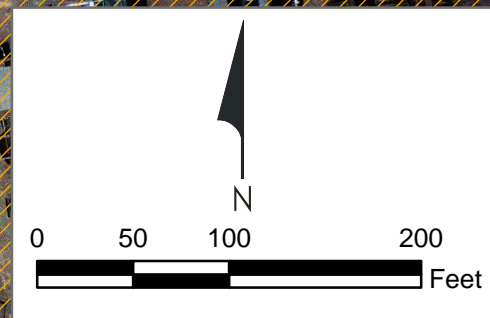
Path: H:\LePetoman\NERT\Soil_Excavation\GIS\Map\ExcavationControlAreas2015\Fig3b_ExcavationControlAreas_C1_C2_C3_C4.mxd



Legend

- + Sample Locations
- Excavation Control Area (ECA)

Map Source: Aerotech Mapping, Inc. July-August 2016.

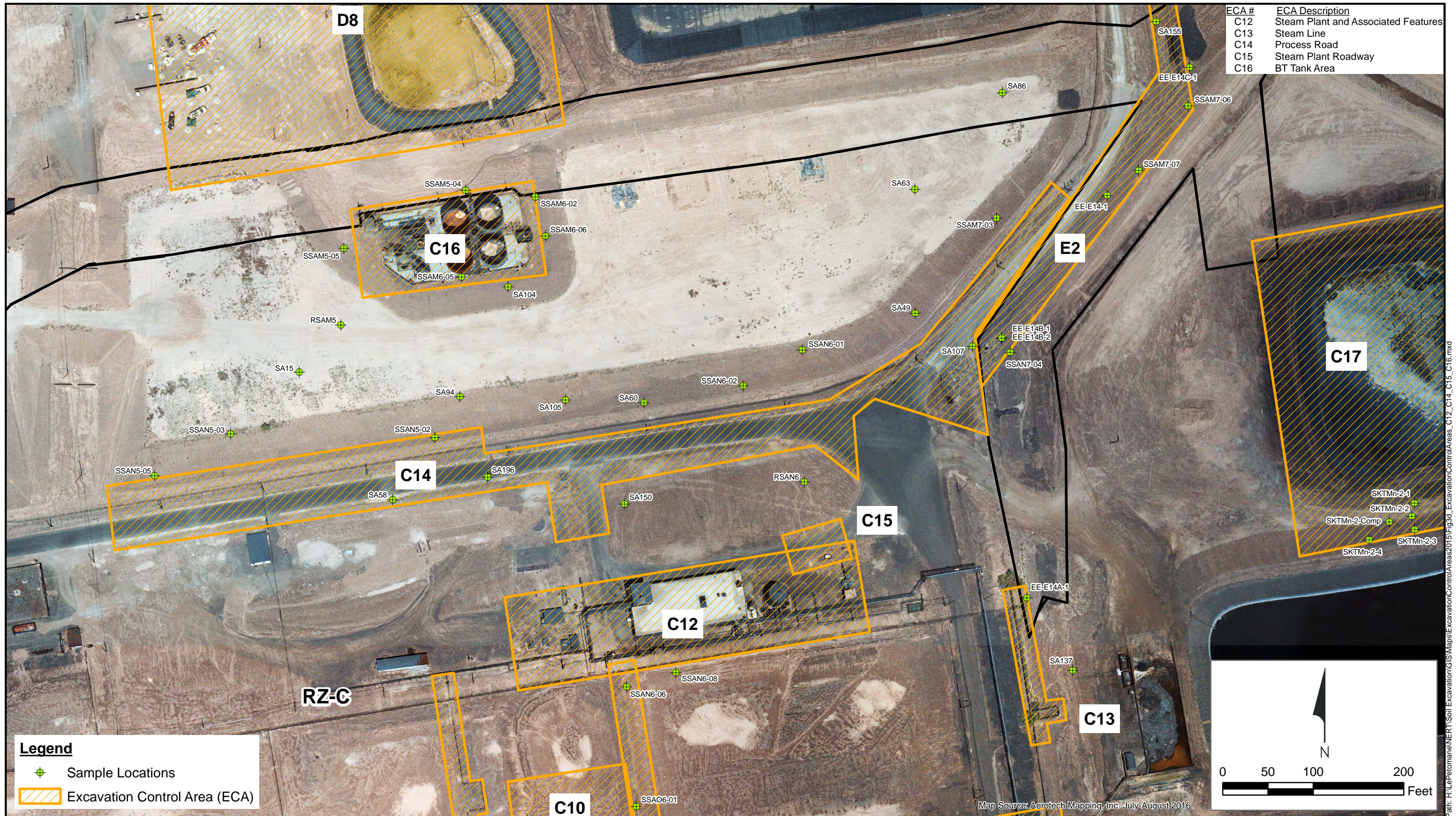


Excavation Control Areas C5, C6, C7, C8, C9, C10, C11, C12, and C13
 Nevada Environmental Response Trust Site, Henderson, Nevada

Figure
3c

Drafter: RS Date: 10/5/2016 Contract Number: 21-3100FA Approved by: DR Revised:

Path: H:\LePetoman\NER\T\Soil_Excavation\GIS\Maps\ExcavationControlAreas2015\Fig3c_ExcavationControlAreas_C5_C6_C7_C8_C9_C10_C11_C13.mxd



ECA #	ECA Description
C12	Steam Plant and Associated Features
C13	Steam Line
C14	Process Road
C15	Steam Plant Roadway
C16	BT Tank Area

Legend

- + Sample Locations
- Excavation Control Area (ECA)

N

0 50 100 200
Feet

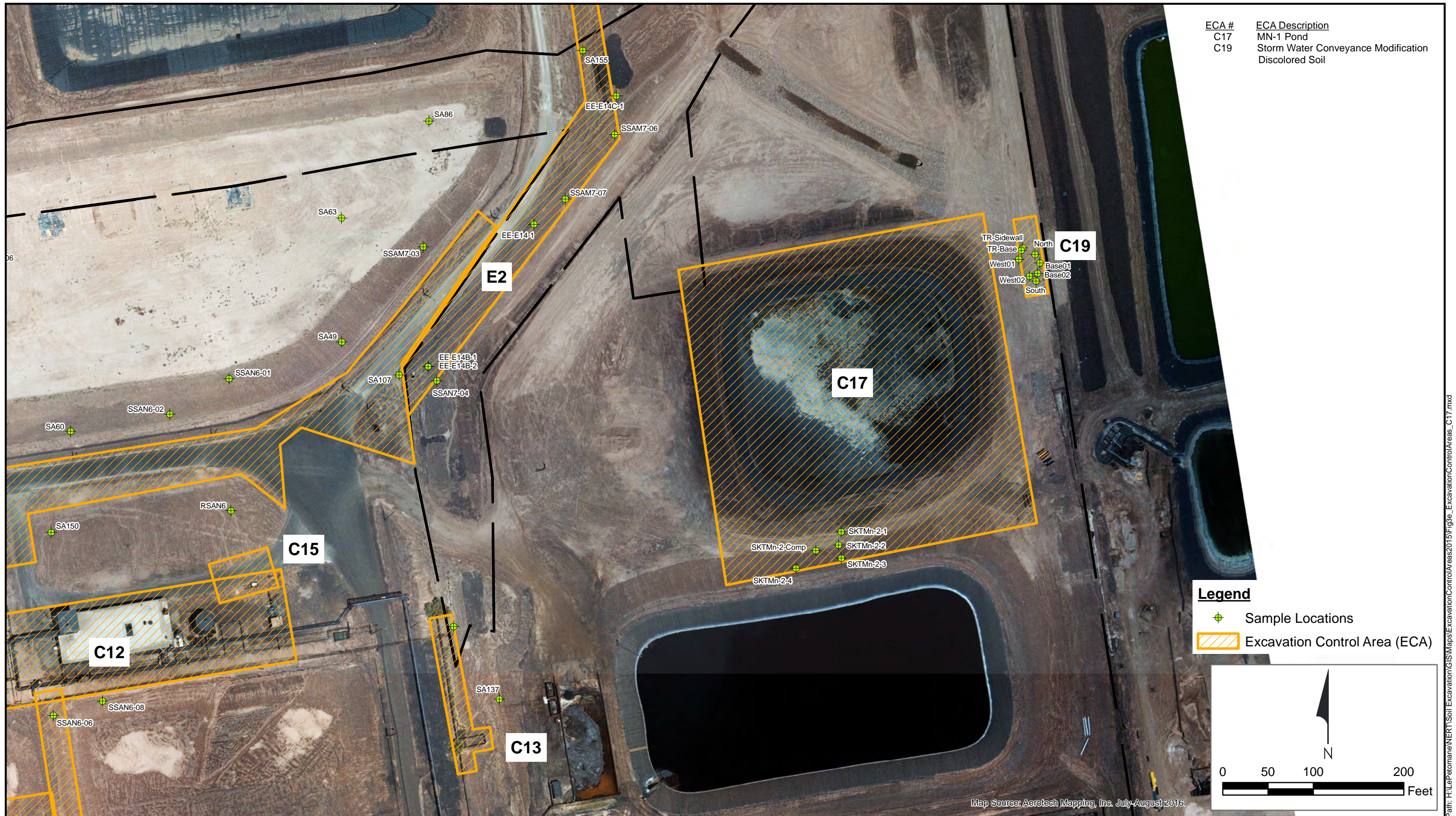


Excavation Control Areas C12, C13, C14, C15, and C16
Nevada Environmental Response Trust Site, Henderson, Nevada

Figure
3d

Drafter: RS Date: 10/5/2016 Contract Number: 21-32100FA Approved by: DR Revised:

Path: H:\LePetoman\NERT\Soil_Excavation\GIS\Map\ExcavationControlAreas2015\Fig3d_ExcavationControlAreas_C12_C13_C14_C15_C16.mxd



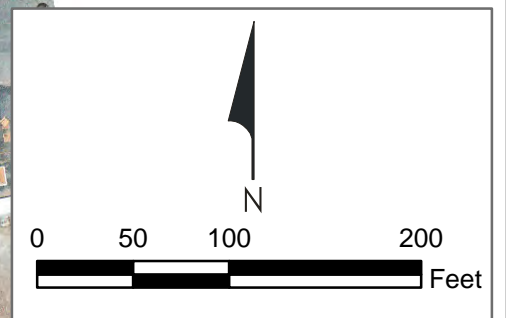
Path: H:\LePetomane\NERT\Soil_Excavation\GIS\Maps\ExcavationControlAreas2015\Fig3e_ExcavationControlAreas_C17.mxd



Legend

- Sample Locations
- Excavation Control Area (ECA)

Map Source: Aerotech Mapping, Inc. July-August 2016.

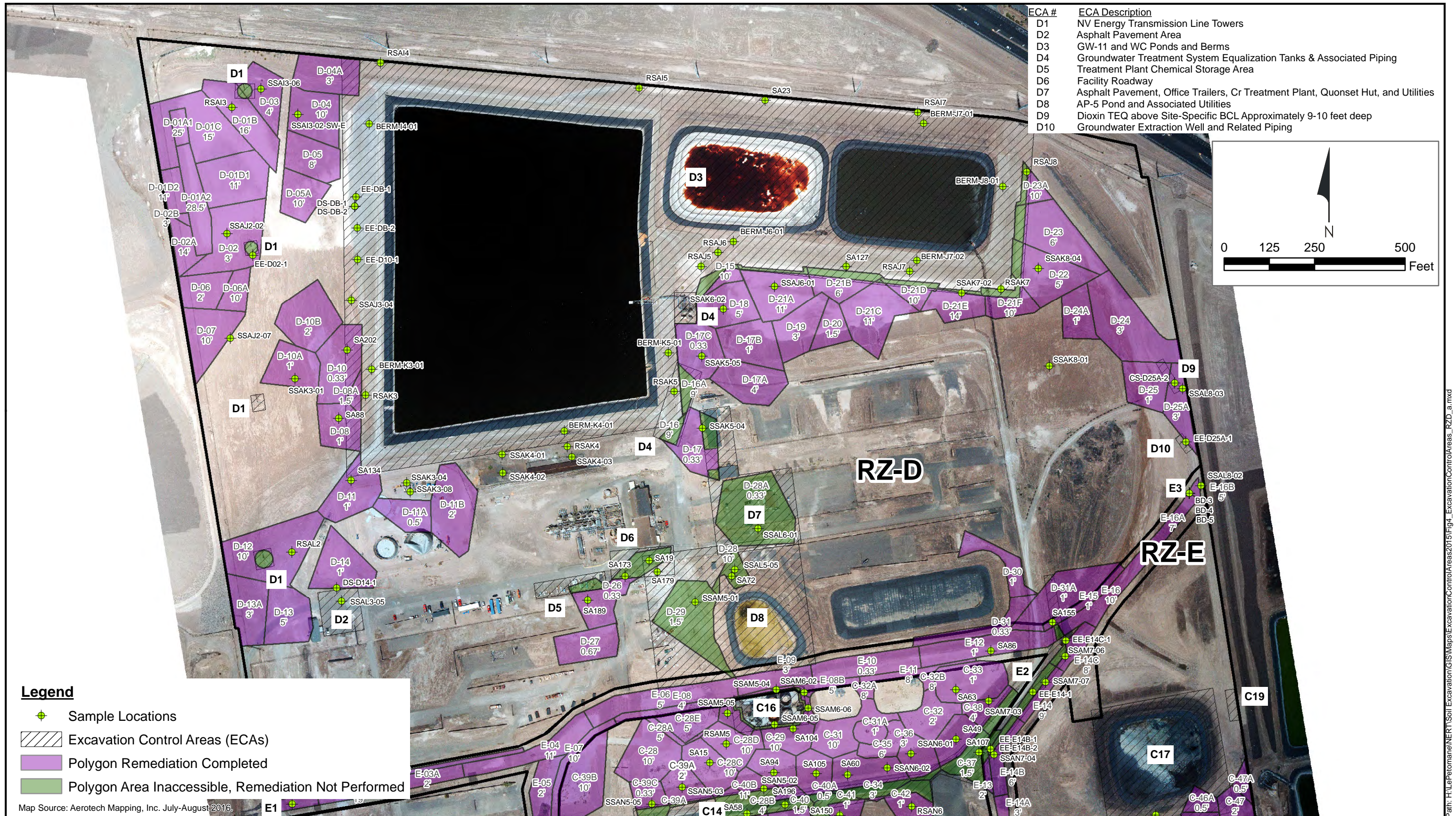


Excavation Control Area C18
 Nevada Environmental Response Trust Site, Henderson, Nevada





Figure
3f

Drafter: RS Date: 10/5/2016 Contract Number: 21-32100FA Approved by: DR Revised:

Path: H:\Leveeman\NERT\Soil_Excavation\GIS\Maps\ExcavationControlAreas2015\Fig3f_ExcavationControlAreas_C18.mxd



Legend

-  Sample Locations
-  Excavation Control Areas (ECAs)
-  Polygon Remediation Completed
-  Polygon Area Inaccessible, Remediation Not Performed

Map Source: Aerotech Mapping, Inc. July-August 2016.

Excavation Control Areas in RZ-D
Nevada Environmental Response Trust Site, Henderson, Nevada



Drafter: RS Date: 10/13/2016 Contract Number: 21-32100FA Approved by: DR Revised:

Figure
4

Path: H:\LePetomane\NERT\Soil_Excavation\GIS\Map\ExcavationControlAreas2015\Fig4_ExcavationControlAreas_RZ-D_a.mxd



Legend

- Sample Locations
- Excavation Control Area (ECA)

ECA #	ECA Description
D1	NV Energy Transmission Line Towers
D2	Asphalt Pavement Area
D3	GW-11 and WC Ponds and Berms
D4	Groundwater Treatment System Equalization Tanks & Associated Piping
D5	Treatment Plant Chemical Storage Area
D6	Facility Roadway
D7	Asphalt Pavement, Office Trailers, Cr Treatment Plant, Quonset Hut, and Utilities
D8	AP-5 Pond and Associated Utilities
D9	Dioxin TEQ above Site-Specific BCL Approximately 9-10 feet deep
D10	Groundwater Extraction Well and Related Piping

Excavation Control Areas in RZ-D (without Remediation Polygons)
 Nevada Environmental Response Trust Site, Henderson, Nevada



Drafter: RS Date: 12/14/2016 Contract Number: 21-32100FA Approved by: DR Revised:

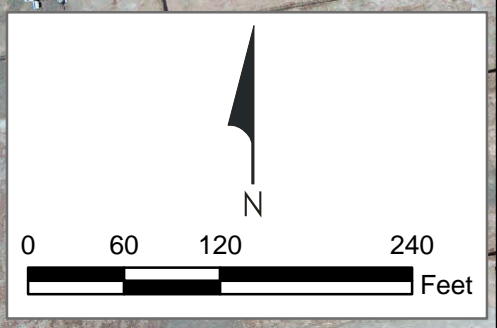
Figure
4a

Path: H:\LePetomane\NERT\Soil_Excavation\GIS\Map\ExcavationControlAreas\2015\Fig4a_ExcavationControlAreas_RZD.mxd

ECA #	ECA Description
D1	NV Energy Transmission Line Towers
D2	Asphalt Pavement Area



Legend
 ● Sample Locations
 ▨ Excavation Control Area (ECA)
 Map Source: Aerotech Mapping, Inc. July-August 2016.

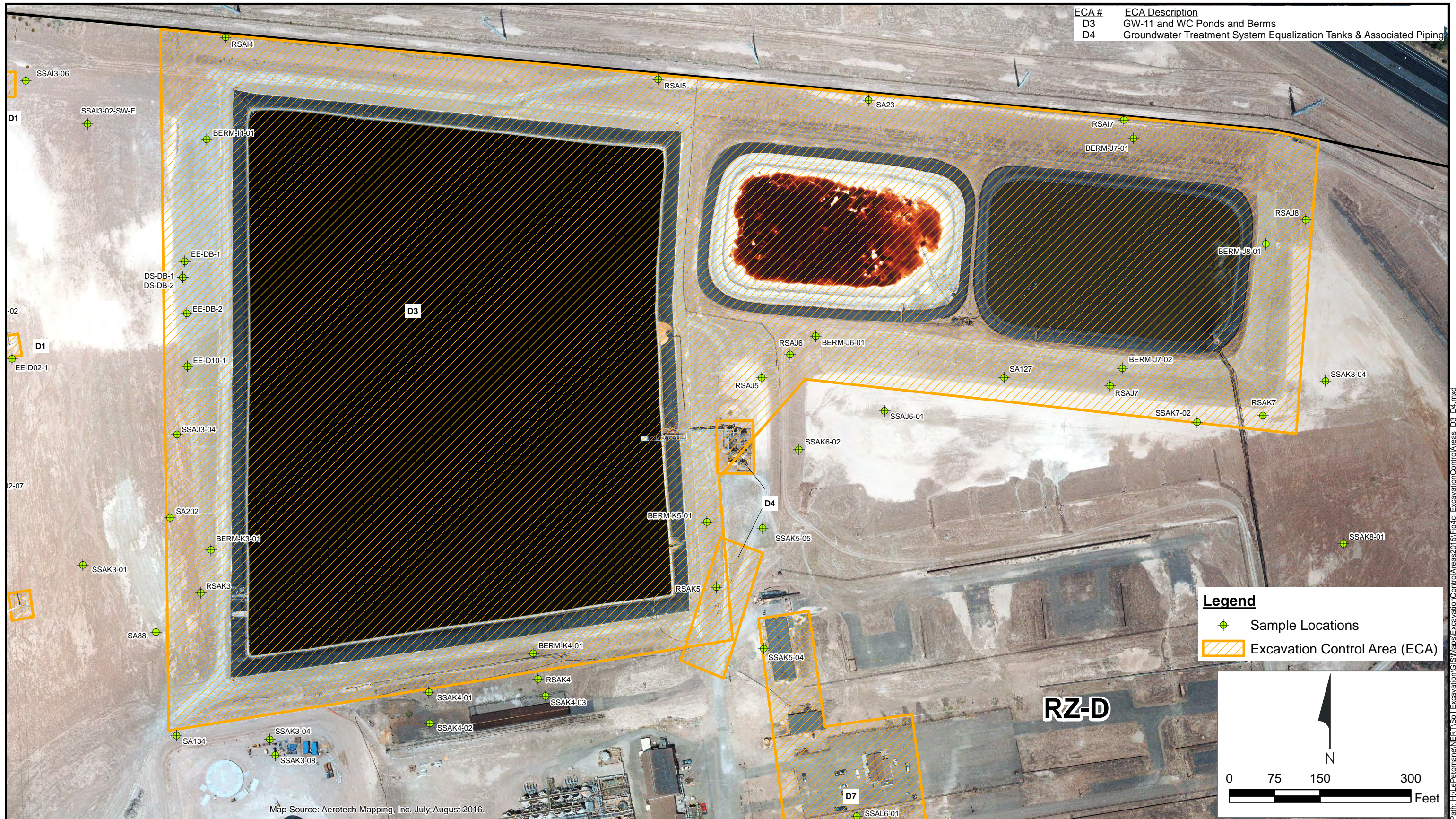


Excavation Control Areas D1 and D2
 Nevada Environmental Response Trust Site, Henderson, Nevada

Figure
4b

Drafter: RS Date: 10/5/2016 Contract Number: 21-32100FA Approved by: Revised:

ECA #	ECA Description
D3	GW-11 and WC Ponds and Berms
D4	Groundwater Treatment System Equalization Tanks & Associated Piping



Map Source: Aerotech Mapping, Inc. July-August 2016.



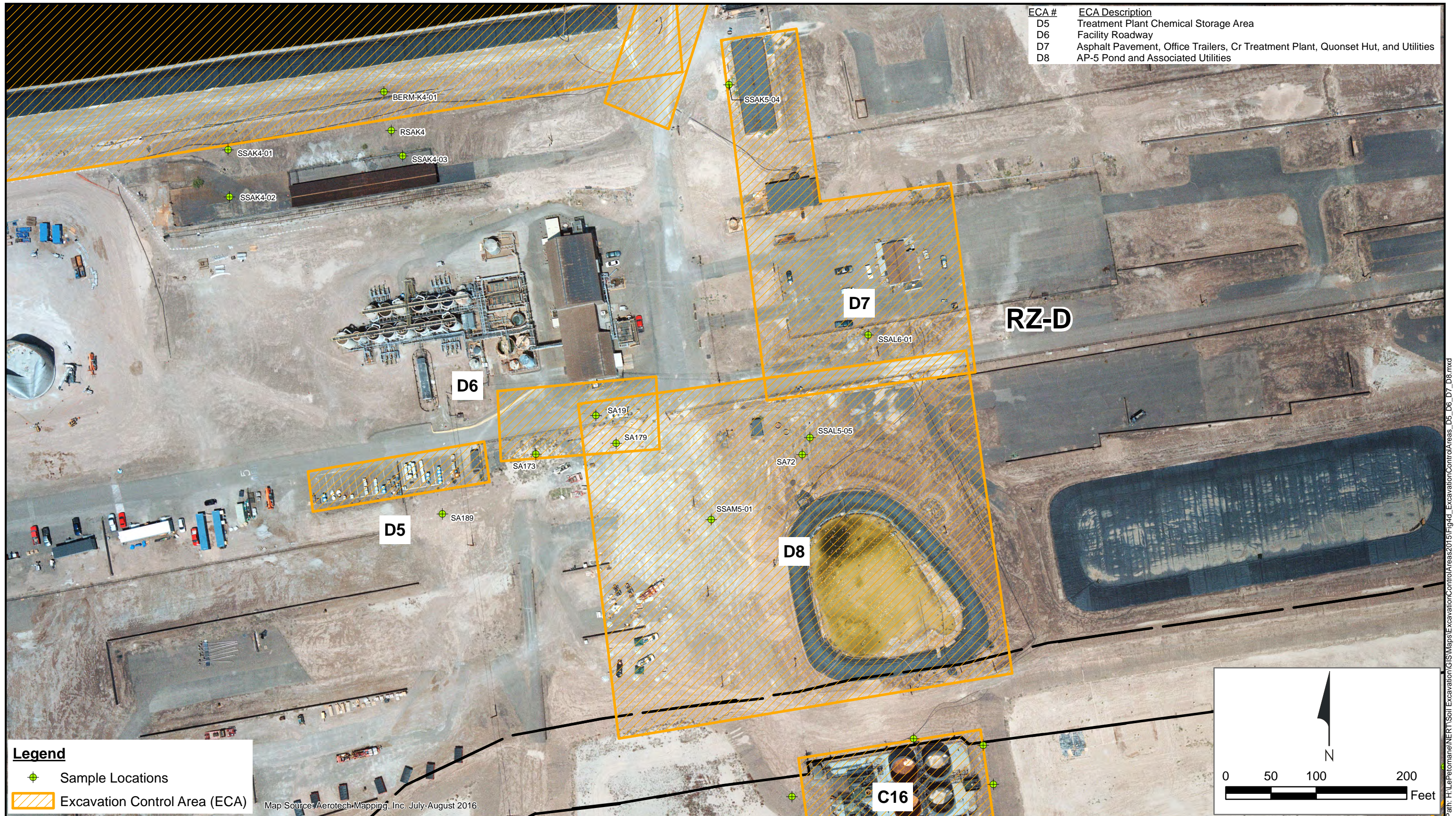
Excavation Control Areas D3 and D4

Nevada Environmental Response Trust Site, Henderson, Nevada

Drafter: RS Date: 10/5/2016 Contract Number: 21-32100FA Approved by: DR Revised:

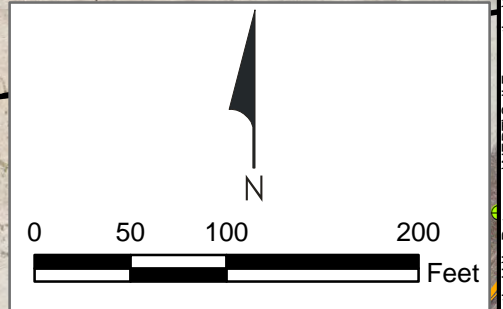
Figure
4c

Path: H:\LePetoman\NERT\Soil Excavation\GIS\Map\ExcavationControlAreas2015\Fig4c_ExcavationControlAreas_D3_D4.mxd



Legend
 ● Sample Locations
 ▨ Excavation Control Area (ECA)

Map Source: Aerotech Mapping, Inc. July-August 2016.



Excavation Control Areas D5, D6, D7, and D8
 Nevada Environmental Response Trust Site, Henderson, Nevada

Figure
4d

Drafter: RS

Date: 10/5/2016

Contract Number: 21-32100FA

Approved by: DR

Revised:

Path: H:\LePetoman\NERT\Soil_Excavation\GIS\Map\ExcavationControlAreas2015\Fig4d_ExcavationControlAreas_D5_D6_D7_D8.mxd

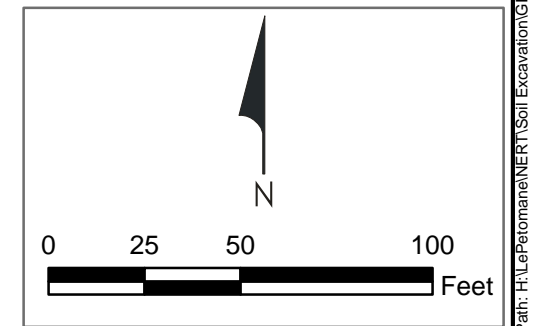


ECA #	ECA Description
D9	Dioxin TEQ above Site-Specific BCL Approximately 9-10 feet deep
D10	Groundwater Extraction Well and Related Piping

Legend

- Sample Locations
- Excavation Control Area (ECA)
- Removed ECA

Map Source: Aerotech Mapping, Inc. July-August 2016.



Path: H:\LePetoman\NERT\Soil_Excavation\GIS\Maps\ExcavationControlAreas2015\Fig4e_ExcavationControlAreas_D9_D10_2015.mxd



Excavation Control Areas D9 and D10
 Nevada Environmental Response Trust Site, Henderson, Nevada

Figure
4e

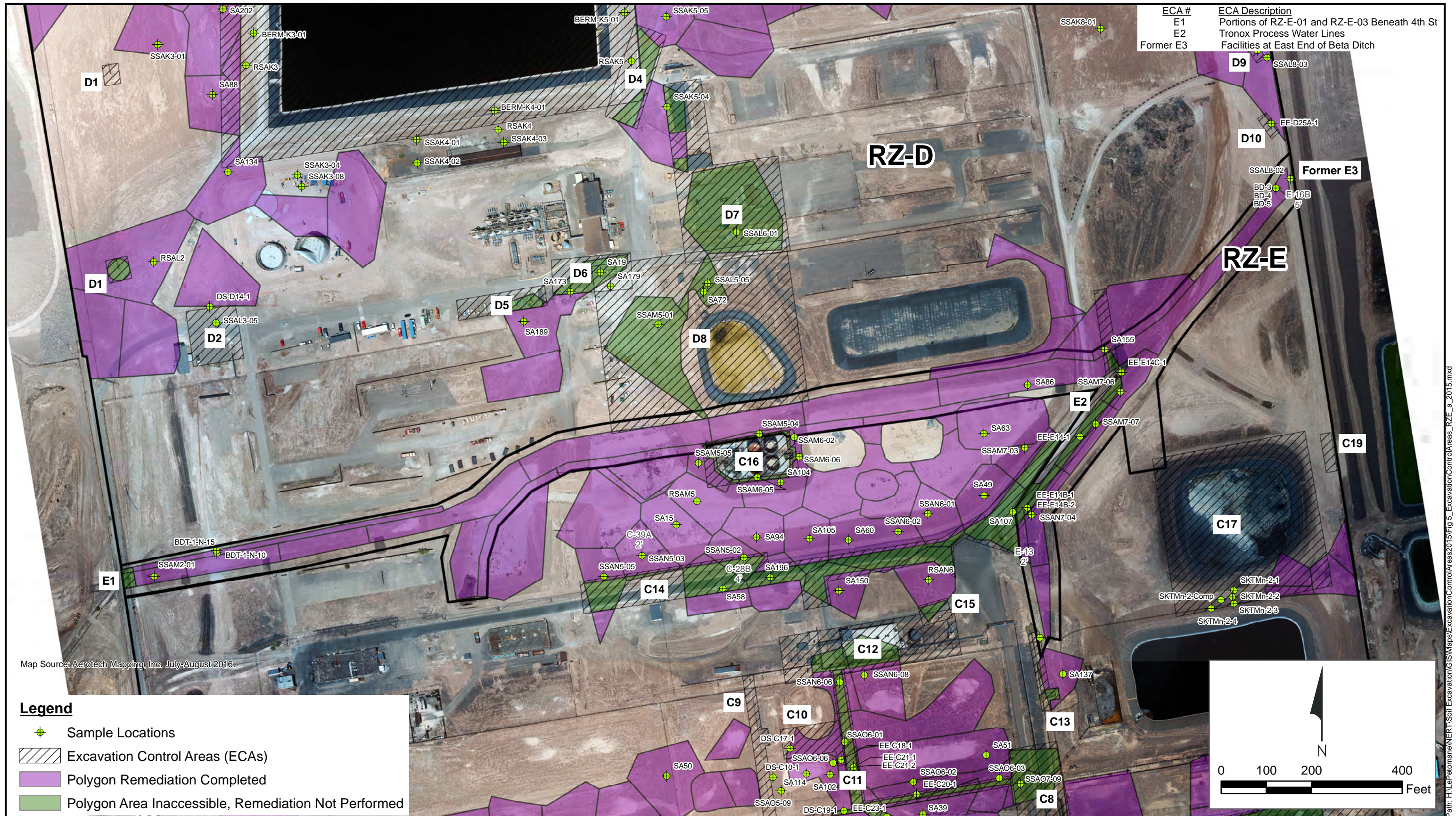
Drafter: RS

Date: 10/5/2016

Contract Number: 21-32100FA

Approved by: DR

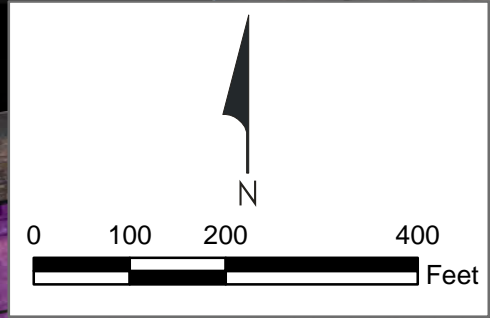
Revised:



Map Source: Aerotech Mapping, Inc. July-August 2016.

Legend

- Sample Locations
- Excavation Control Areas (ECAs)
- Polygon Remediation Completed
- Polygon Area Inaccessible, Remediation Not Performed



Excavation Control Areas in RZ-E
 Nevada Environmental Response Trust Site, Henderson, Nevada

Figure **5**

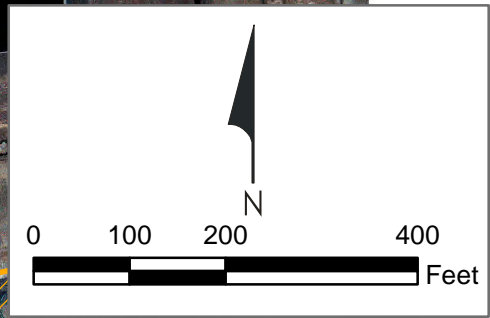
Path: H:\LePomane\NERT\Soil_Excavation\GIS\Maps\ExcavationControlAreas2015\Fig 5_ExcavationControlAreas_RZ-E_a_2015.mxd



Map Source: Aerotech Mapping, Inc. July-August 2016.

Legend

- Sample Locations
- Excavation Control Area (ECA)
- Removed ECA



Excavation Control Areas in RZ-E (without Remediation Polygons)
 Nevada Environmental Response Trust Site, Henderson, Nevada

Figure
5a

Drafter: RS Date: 10/13/2016 Contract Number: 21-29100FA Approved by: DR Revised:

Path: H:\LePetoman\NERT\Soil_Excavation\GIS\Maps\ExcavationControlAreas2015\Fig5a_ExcavationControlAreas_RZ-E.mxd

ECA #	ECA Description
E1	Portions of RZ-E-01 and RZ-E-03 Beneath 4th St

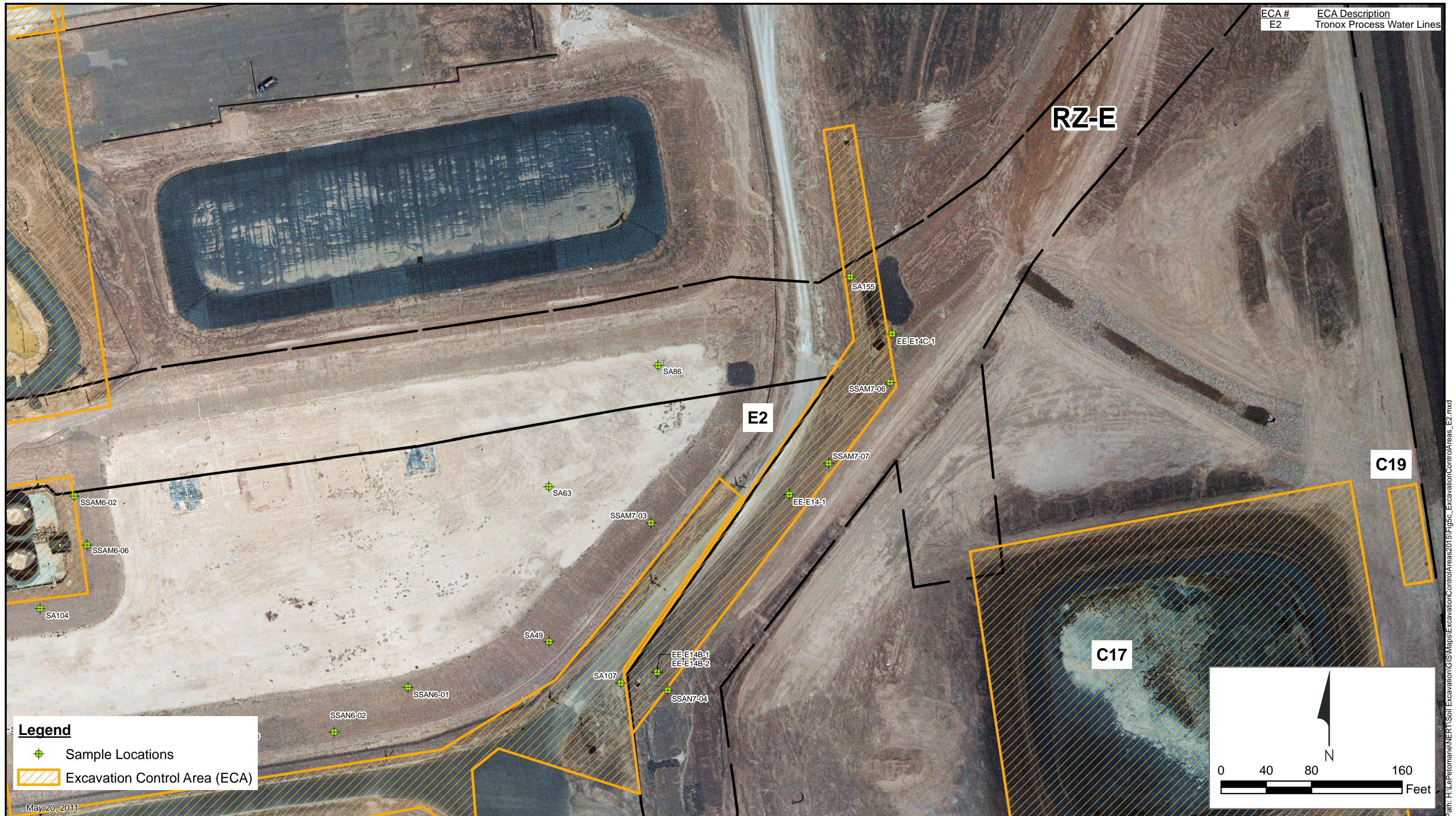


Excavation Control Area E1
 Nevada Environmental Response Trust Site, Henderson, Nevada

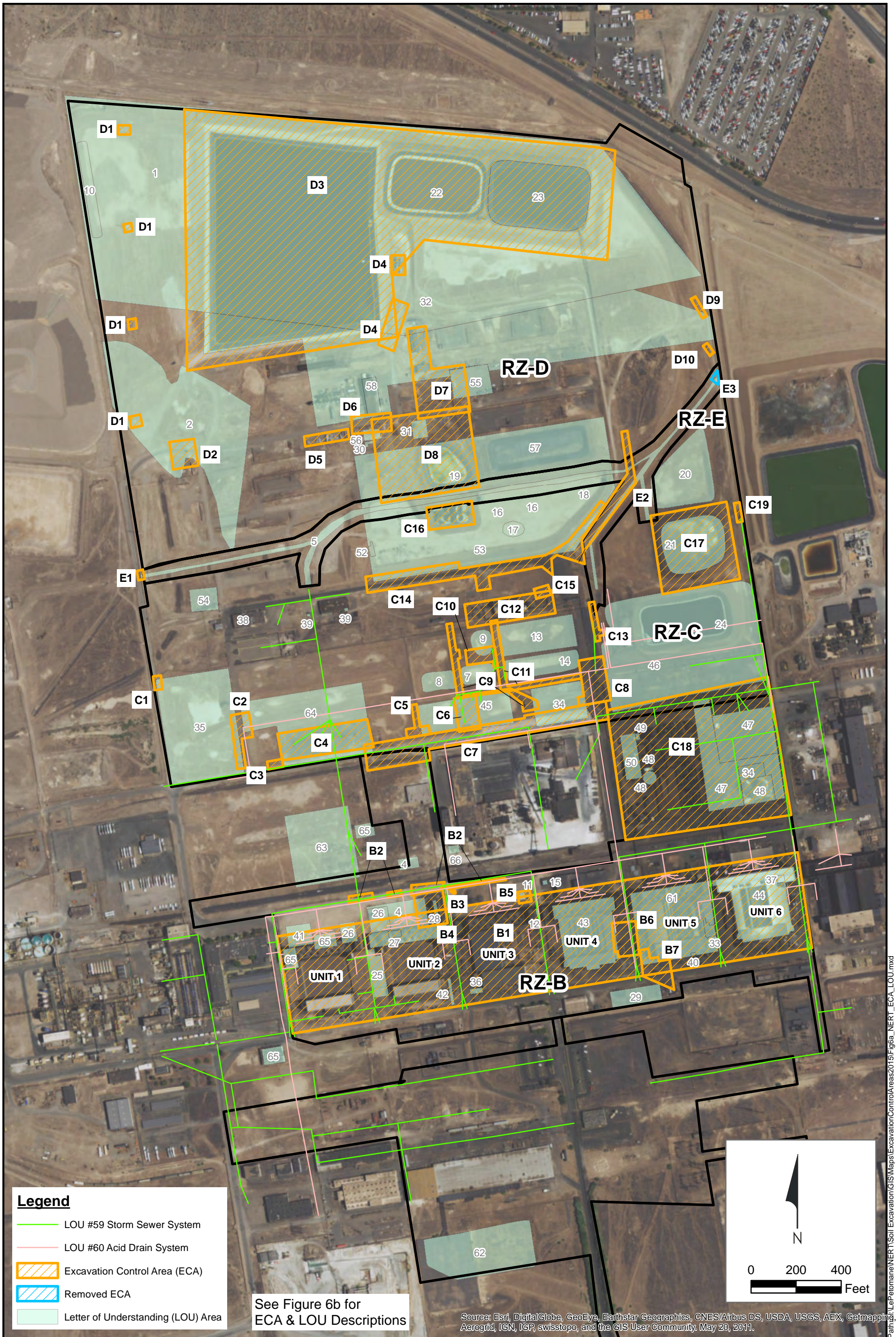
Figure
5b

Drafter: RS Date: 12/14/2016 Contract Number: 21-32100FA Approved by: DR Revised:

Path: H:\LePetomane\NERT\Soil_Excavation\GIS\Maps\ExcavationControlAreas2015\Fig5b_ExcavationControlAreas_E1.mxd



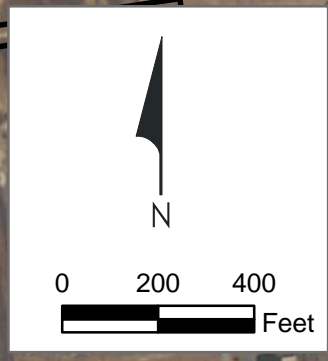
Path: H:\LePetoman\NER\Soil_Excavation\GIS\Maps\ExcavationControlAreas2015\Fig5c_ExcavationControlAreas_E2.mxd



Legend

- LOU #59 Storm Sewer System
- LOU #60 Acid Drain System
- Excavation Control Area (ECA)
- Removed ECA
- Letter of Understanding (LOU) Area

See Figure 6b for
ECA & LOU Descriptions



Source: Esri, DigitalGlobe, GeoEye, Earthstar Geographics, CNES/Airbus DS, USDA, USGS, AEX, Getmapping, Aerogrid, IGN, IGP, swisstopo, and the GIS User Community, May 20, 2011.

ECA #	ECA Description	LOU #	LOU Description
RZ-B		1	Trade Effluent Settling Ponds
B1	Unit Buildings 1-6 Including Soil Within 50 feet of Unit Buildings 1-6	2	Open Area Due South of Trade Effluent Settling Ponds
B2	Portions of Polygons RZ-B-04C/05/09A/11/12/13 Extending into Avenue G	3	Air Pollution Emissions Associated with Industrial Processes
B3	Fire Hydrant	4	Former Hardesty Chemical Company Site
B4	Former Hazardous Waste Storage Area	5	On-Site Portion of Beta Ditch Including the Small Diversion Ditch
B5	Sodium Chlorate Filter Cake Process Area	6	Unnamed Drainage Ditch Segment
B6	Soils Beneath Approximately 6 Feet Deep in Polygons RZ-B-20 and RZ-B-21	7	Old P-2 Surface Impoundment
B7	Soils Within Polygon RZ-B-22	8	Old P-3 Surface Impoundment
RZ-C		9	New P-2 Pond and Associated Piping
C1	Portions of RZ-C-01/01A Beneath 4th Street	10	On-Site Hazardous Landfill
C2	Portions of RZ-C-03/04/05A Beneath 5th Street	11	Sodium Chlorate Filter Cake Area North of Unit 3
C3	Portions of RZ-C-06 Beneath Fire Hydrant, and Utilities along Avenue F	12	Hazardous Waste Storage Area Between Units 3 and 4
C4	Concrete Foundation	13	Closed Surface Impoundment S-1
C5	Water, Fiber Optic, and Electric Utility Line Through and Near RZ-C-11/13	14	Closed Surface Impoundment P-1
C6	Discolored Soil at Former Pump House Yard	15	Platinum Drying Unit North of Unit 4
C7	Avenue F Utilities, Railroad Line, and Roadway	16	Ponds AP-1, AP-2 and AP-3 and Associated Transfer Lines
C8	9th Street Utilities and Roadway	17	Ponds AP-1, AP-2 and AP-3 and Associated Transfer Lines
C9	Diesel Tank and Pipelines	18	Pond AP-4
C10	Areas with Discolored Soil	19	Pond AP-5
C11	Natural Gas Pipeline	20	Pond C-1 and Associated Piping
C12	Steam Plant and Associated Features	21	Pond MN-1 and Associated Piping
C13	Steam Line	22	Ponds WC-West and Associated Piping
C14	Process Road	23	Ponds WC-East and Associated Piping
C15	Stream Plant Roadway	24	Leach Beds, Associated Conveyance Facilities and Former Manganese Tailings Area
C16	BT Tank Area	25	Process Hardware Storage Area Between Units 1 and 2
C17	MN-1 Pond	26	Trash Storage Area North of Units 1 and 2
C18	Leach Plant Equipment and Facilities	27	PCB Storage Area - Unit 2
C19	Storm Water Conveyance Modification Discolored Soil	28	Hazardous Waste Storage Area North of Unit 2
RZ-D		29	Solid Waste Dumpsters
D1	NV Energy Transmission Line Towers	30	Ammonium Perchlorate Area- Pad 35
D2	Asphalt Pavement Area	31	Drum Crushing and Recycling Area
D3	GW-11 and WC Ponds and Berms	32	Groundwater Remediation Unit
D4	Groundwater Treatment System Equalization Tanks & Associated Piping	33	Sodium Perchlorate Platinum By-Product Filter
D5	Treatment Plant Chemical Storage Area	34	Manganese Tailings Area
D6	Facility Roadway	35	Truck Unloading Area
D7	Asphalt Pavement, Office Trailers, Cr Treatment Plant, Quonset Hut, and Utilities	36	Former Satellite Accumulation Point - Unit 3, Maintenance Shop
D8	AP-5 Pond and Associated Utilities	37	Former Satellite Accumulation Point - Unit 6, Maintenance Shop
D9	Dioxin TEQ above Site-Specific BCL Approximately 9-10 feet deep	38	Former Satellite Accumulation Point - AP Laboratory
D10	Groundwater Extraction Well and Related Piping	39	Former Satellite Accumulation Point - AP Maintenance Shop
RZ-E		40	PCB Transformer Spill
E1	Portions of RZ-E-01 and RZ-E-03 Beneath 4th Street	41	Unit 1 Tenants - Stains
E2	Tronox Process Water Lines	42	Unit 2 Salt Redler
Former		43	Unit 4 and 5 Basements
E3	Facilities at East End of Beta Ditch	44	Unit 6 Basements
		45	Diesel Storage Tank Area - Stains
		46	Former Old Main Cooling Tower and Recirculation Lines
		47	Leach Plant Area Manganese Ore Piles
		48	Leach Plant Area Anolyte Tanks
		49	Leach Plant Area Sulfuric Acid Storage Tank
		50	Leach Plant Area Leach Tanks
		51	Leach Plant Area Transfer Lines To/From Unit 6
		52	AP Plant Area Screening Building, Dryer Building, and Associated Sump
		53	AP Plant Area Tank Farm
		54	AP Plant Area Change House/Laboratory and Septic Tank
		55	AP Plant Area Storage Pads - Fire
		56	AP Plant Area Old Building D-1 Washdown
		57	AP Plant Area New Building D-1 Washdown
		58	AP Plant SI and Transfer Lines To/From AP SI
		59	Storm Sewer System
		60	Acid Drain System
		61	Old Sodium Chlorate Plant Decommissioning
		62	State Industries Inc. Site, Including Impoundments and Catch Basin
		63	J.B. Kellet, Inc. Trucking Site
		64	Koch Materials Company
		65	Assorted KMCC Tenants
		66	Flintkote Company
		67	Delbert Madsen and Estate of Delbery Madsen

Path: H:\LePetomane\NER\Soil Excavation\GIS\Maps\ExcavationControlAreas2015\Fig 6b_NERT_ECA_L