

Nevada Environmental Response Trust Groundwater Extraction and Treatment System Enhanced Operational Metrics																			
Date	LS #1 Flow (gpm)	East Well (PC-116R)		Center Well (PC99R3)		West Well (PC-115R)		PC 117		PC 118		PC 119		PC 120		PC 121		PC 133	
		Flow (gpm)	Water Elevation (ft amsl)	Flow (gpm)	Water Elevation (ft amsl)	Flow (gpm)	Water Elevation (ft amsl)	Flow (gpm)	Water Elevation (ft amsl)	Flow (gpm)	Water Elevation (ft amsl)	Flow (gpm)	Water Elevation (ft amsl)	Flow (gpm)	Water Elevation (ft amsl)	Flow (gpm)	Water Elevation (ft amsl)	Flow (gpm)	Water Elevation (ft amsl)
09/01/16	464	156	1539.2	72	1542.0	107	1543.1	119	1537.5	66	1546.6	42	1548.6	0	1550.1	0	1549.9	8	1520.0
09/02/16	463	150	1539.2	69	1541.8	105	1543.1	116	1537.5	63	1546.6	40	1548.6	0	1550.1	0	1549.9	8	1520.0
09/03/16	464	159	1539.1	74	1541.9	110	1543.1	122	1537.5	67	1546.7	43	1548.6	0	1550.1	0	1549.9	8	1520.0
09/04/16	468	153	1539.1	70	1541.9	106	1543.1	118	1537.5	65	1546.7	41	1548.6	0	1550.1	0	1550.0	8	1520.0
09/05/16	468	155	1539.1	71	1542.1	105	1543.1	120	1537.5	66	1546.6	42	1548.6	0	1550.1	0	1549.9	8	1520.0
09/06/16	469	152	1539.1	70	1542.1	105	1543.1	117	1537.5	64	1546.6	40	1548.6	0	1550.1	0	1549.9	8	1520.0
09/07/16	468	155	1539.1	71	1542.1	107	1543.1	120	1537.4	65	1546.6	42	1548.6	0	1550.2	0	1549.9	8	1520.0
09/08/16	468	155	1539.1	71	1541.9	107	1543.1	119	1537.4	65	1546.6	41	1548.6	0	1550.2	0	1549.9	8	1520.0
09/09/16	469	157	1539.1	73	1541.8	109	1543.0	121	1537.4	66	1546.6	42	1548.6	0	1550.2	0	1549.9	8	1520.0
09/10/16	469	156	1539.1	71	1541.7	107	1543.0	119	1537.4	66	1546.6	41	1548.6	0	1550.1	0	1549.9	8	1520.0
09/11/16	468	155	1539.0	75	1541.9	108	1543.0	119	1537.4	65	1546.6	42	1548.6	0	1550.1	0	1549.9	8	1520.0
09/12/16	469	149	1539.1	64	1541.9	103	1543.0	114	1537.4	63	1546.6	40	1548.6	0	1550.1	0	1549.9	8	1520.0
09/13/16	469	161	1539.0	73	1542.0	111	1543.0	124	1537.4	68	1546.6	43	1548.6	0	1550.1	0	1549.9	8	1520.0
09/14/16	469	154	1539.0	71	1541.9	107	1543.0	119	1537.4	65	1546.6	41	1548.5	0	1550.1	0	1549.9	8	1520.0
09/15/16	469	155	1539.0	70	1541.9	106	1543.0	118	1537.4	64	1546.6	41	1548.5	0	1550.1	0	1549.9	8	1520.0
09/16/16	469	157	1539.0	72	1542.0	108	1543.0	121	1537.4	66	1546.6	42	1548.5	0	1550.1	0	1549.9	8	1520.0
09/17/16	468	156	1539.0	71	1542.1	107	1543.0	120	1537.3	65	1546.6	41	1548.5	0	1550.1	0	1549.9	8	1520.0
09/18/16	469	153	1539.0	70	1541.9	106	1543.0	118	1537.3	65	1546.6	41	1548.5	0	1550.1	0	1549.9	8	1520.0
09/19/16	467	157	1539.0	72	1541.9	108	1543.0	120	1537.3	66	1546.6	42	1548.5	0	1550.1	0	1549.9	8	1520.0
09/20/16	469	149	1539.0	68	1542.0	102	1543.0	114	1537.3	62	1546.6	40	1548.5	0	1550.1	0	1549.9	8	1520.0
09/21/16	479	159	1539.0	73	1541.8	111	1543.0	123	1537.3	67	1546.6	42	1548.5	0	1550.1	0	1549.9	8	1520.0
09/22/16	468	153	1539.0	71	1541.9	107	1543.0	119	1537.4	65	1546.6	41	1548.5	0	1550.1	0	1549.9	8	1520.0
09/23/16	469	153	1539.0	70	1542.1	106	1543.0	119	1537.4	65	1546.6	41	1548.5	0	1550.1	0	1549.8	8	1520.0
09/24/16	469	153	1539.0	71	1541.8	103	1543.0	119	1537.4	64	1546.6	41	1548.5	0	1550.1	0	1549.8	8	1520.0
09/25/16	469	152	1539.0	70	1541.8	106	1543.0	119	1537.3	64	1546.5	41	1548.5	0	1550.1	0	1549.8	8	1520.0
09/26/16	469	148	1539.0	68	1541.9	104	1543.0	115	1537.3	63	1546.5	39	1548.5	0	1550.1	0	1549.8	8	1520.0
09/27/16	469	159	1539.0	73	1542.0	111	1543.0	124	1537.3	68	1546.5	43	1548.5	0	1550.1	0	1549.8	8	1520.0
09/28/16	468	151	1539.0	70	1541.9	106	1542.9	118	1537.3	64	1546.5	41	1548.5	0	1550.1	0	1549.8	8	1520.0
09/29/16	469	154	1539.0	71	1541.7	108	1542.9	120	1537.3	66	1546.5	41	1548.5	0	1550.0	0	1549.8	8	1520.0
09/30/16	469	153	1539.0	71	1541.9	108	1542.9	119	1537.3	65	1546.5	42	1548.5	0	1550.0	0	1549.8	8	1520.0
Monthly Average	469	154	1539.0	71	1541.9	107	1543.0	119	1537.4	65	1546.6	41	1548.5	0	1550.1	0	1549.9	8	1520.0
Analytical	Conc (mg/L)	Date	Conc (mg/L)	Date	Conc (mg/L)	Date	Conc (mg/L)	Date	Conc (mg/L)	Date	Conc (mg/L)	Date	Conc (mg/L)	Date	Conc (mg/L)	Date	Conc (mg/L)	Date	
Perchlorate	13	9/6/2016	15	9/6/2016	12	9/6/2016	6.8	9/6/2016	4.5	9/6/2016	0.60	9/6/2016	0.0036	9/6/2016	0.0086	9/6/2016	0.67	9/6/2016	
Hexavalent Chromium	ND	9/6/2016	ND	9/6/2016	ND	9/6/2016	ND	9/6/2016	ND	9/6/2016	ND	9/6/2016	ND	9/6/2016	ND	9/6/2016	ND	9/6/2016	
Total Chromium	ND	9/6/2016	ND	9/6/2016	ND	9/6/2016	ND	9/6/2016	ND	9/6/2016	ND	9/6/2016	ND	9/6/2016	ND	9/6/2016	ND	9/6/2016	

Notes:
 Flow reported as gpm is a daily average calculated from the totalizer reading.
 NA = Not Available; ND = Not detected above laboratory method detection limit (ClO₄ = 0.5 ug/L; Cr(TR)=2.5 ug/L, Cr(VI) = 1 ug/L).
 1: Analytical results are reported from TestAmerica.

Nevada Environmental Response Trust Groundwater Extraction and Treatment System Enhanced Operational Metrics																	
Date	LS #3 Flow (gpm)	ART 1A/1B		ART 2A/2B		ART 3A/3B		ART 4A/4B		ART 6/9		ART 7A/7B		ART 8A/8B		PC-150	
		Flow (gpm)	Water Elevation (ft amsl)	Flow (gpm)	Water Elevation (ft amsl)	Flow (gpm)	Water Elevation (ft amsl)	Flow (gpm)	Water Elevation (ft amsl)	Flow (gpm)	Water Elevation (ft amsl)	Flow (gpm)	Water Elevation (ft amsl)	Flow (gpm)	Water Elevation (ft amsl)	Flow (gpm)	Water Elevation (ft amsl)
09/01/16	234	0	1589.2	112	1588.0	30	1585.6	7	1575.0	57	1581.7	15	1578.7	164	1583.9	2	1584.7
09/02/16	234	0	1589.2	117	1588.6	29	1585.5	7	1575.0	59	1581.7	14	1578.8	164	1583.9	2	1584.1
09/03/16	235	0	1589.2	117	1588.5	29	1585.5	7	1575.0	59	1581.7	14	1578.9	161	1583.8	1	1584.6
09/04/16	234	0	1589.1	118	1588.5	30	1585.5	8	1575.0	58	1581.7	14	1578.7	156	1583.8	2	1584.5
09/05/16	234	0	1589.1	117	1588.5	29	1585.5	7	1575.0	59	1581.7	14	1578.7	155	1583.8	1	1584.1
09/06/16	235	0	1589.1	117	1588.5	29	1585.5	8	1575.0	59	1581.7	14	1578.7	156	1583.8	2	1584.0
09/07/16	235	0	1589.0	117	1588.4	29	1585.4	7	1575.0	58	1581.7	14	1578.8	158	1583.7	1	1584.5
09/08/16	235	0	1589.0	118	1588.4	29	1585.4	8	1575.0	58	1581.6	14	1578.7	159	1583.7	2	1584.1
09/09/16	234	0	1589.0	117	1588.4	29	1585.4	7	1575.0	59	1581.7	14	1578.7	159	1583.7	1	1584.2
09/10/16	234	0	1589.0	117	1588.4	29	1585.4	8	1575.0	59	1581.6	15	1579.2	159	1583.7	1	1584.6
09/11/16	235	0	1589.0	117	1588.4	30	1585.4	7	1575.0	58	1581.7	14	1578.7	154	1583.7	2	1584.1
09/12/16	234	0	1588.9	117	1588.4	29	1585.4	7	1575.0	58	1581.6	14	1578.7	148	1583.6	1	1584.2
09/13/16	234	0	1588.9	118	1588.3	29	1585.4	8	1575.0	59	1581.6	14	1578.8	139	1583.6	1	1584.6
09/14/16	234	0	1588.9	117	1588.3	29	1585.3	7	1575.0	59	1581.6	14	1578.7	138	1583.6	1	1584.4
09/15/16	234	0	1588.9	117	1588.3	30	1585.3	7	1575.0	58	1581.6	14	1581.1	141	1583.6	2	1583.8
09/16/16	235	0	1588.9	117	1588.3	29	1585.3	7	1575.0	59	1581.6	14	1578.7	143	1583.6	1	1584.3
09/17/16	235	0	1588.8	117	1588.3	29	1585.3	7	1575.0	58	1581.6	14	1578.8	119	1583.5	1	1584.7
09/18/16	234	0	1588.8	117	1588.2	29	1585.3	6	1575.0	58	1581.6	14	1578.8	117	1583.5	1	1584.3
09/19/16	234	0	1588.8	117	1588.2	29	1585.3	7	1575.0	59	1581.6	14	1579.6	135	1583.5	1	1584.3
09/20/16	234	0	1588.8	117	1588.2	29	1585.3	7	1575.0	59	1581.6	14	1578.8	133	1583.5	1	1584.6
09/21/16	235	0	1588.8	117	1588.2	29	1585.3	7	1575.0	59	1581.6	14	1579.4	132	1583.5	2	1584.6
09/22/16	234	0	1588.8	117	1588.2	29	1585.3	7	1575.0	59	1581.6	14	1579.0	131	1583.5	2	1584.5
09/23/16	234	0	1588.7	79	1588.2	31	1585.2	3	1575.0	63	1581.6	12	1580.8	128	1583.5	1	1584.5
09/24/16	234	0	1588.7	91	1588.2	35	1585.2	4	1575.0	72	1581.6	13	1579.6	146	1583.4	1	1584.3
09/25/16	235	0	1588.7	91	1588.1	36	1585.2	4	1575.0	72	1581.6	14	1579.1	147	1583.4	1	1584.5
09/26/16	234	0	1588.7	91	1588.1	35	1585.2	5	1575.0	76	1581.6	13	1580.1	146	1583.4	1	1584.1
09/27/16	235	0	1588.7	92	1588.1	35	1585.2	4	1575.0	67	1581.6	13	1579.6	147	1583.4	1	1584.6
09/28/16 ³	234	0	1588.7	91	1588.1	35	1585.2	5	1575.0	72	1581.6	14	1578.9	146	1583.4	1	1584.2
09/29/16	203	0	1588.6	78	1588.1	31	1585.2	4	1575.0	62	1581.6	13	1579.3	127	1583.4	1	1584.1
09/30/16	0	0	1589.2	0	1589.2	0	1587.6	0	1575.0	0	1582.2	0	1587.5	0	1585.5	0	1588.3
Monthly Average	225	0	1588.9	106	1588.3	29	1585.4	6	1575.0	59	1581.7	13	1579.4	140	1583.7	1	1584.5
Analytical ¹		Conc (mg/L)	Date	Conc (mg/L)	Date	Conc (mg/L)	Date	Conc (mg/L)	Date	Conc (mg/L) ²	Date	Conc (mg/L)	Date	Conc (mg/L)	Date	Conc (mg/L)	Date
Perchlorate		27	9/6/2016	11	9/6/2016	180	9/6/2016	210	9/6/2016	190	9/6/2016	97	9/6/2016	76	9/6/2016	170	9/6/2016
Hexavalent Chromium		0.0039	9/6/2016	ND	9/6/2016	0.37	9/6/2016	0.46	9/6/2016	1.3	9/6/2016	1.0	9/6/2016	0.14	9/6/2016	0.37	9/6/2016
Total Chromium		0.016	9/6/2016	ND	9/6/2016	0.30	9/6/2016	0.41	9/6/2016	0.83	9/6/2016	0.61	9/6/2016	0.082	9/6/2016	0.27	9/6/2016

Notes:
 Flow reported as gpm is a daily average calculated from the totalizer reading. NA = Not Available.
 1: Analytical results are reported from TestAmerica.
 2: Concentrations reported for ART-9.
 3: LS #3 and AWF turned off for pump upgrade on 09/28.

Table 3 - Interceptor Well Field (IWF) Operational Metrics

Nevada Environmental Response Trust Groundwater Extraction and Treatment System Enhanced Operational Metrics																					
Date	I-AR		I-AA		I-AB		I-AC		I-AD		I-B		I-C		I-D		I-E		I-F		
	Flow (gpm)	Water Elevation (ft amsl)	Flow (gpm)	Water Elevation (ft amsl)	Flow (gpm)	Water Elevation (ft amsl)	Flow (gpm)	Water Elevation (ft amsl)	Flow (gpm)	Water Elevation (ft amsl)	Flow (gpm)	Water Elevation (ft amsl)	Flow (gpm)	Water Elevation (ft amsl)	Flow (gpm)	Water Elevation (ft amsl)	Flow (gpm)	Water Elevation (ft amsl)	Flow (gpm)	Water Elevation (ft amsl)	
09/01/16	0.47	1723.9	0.70	1715.0	0.00	1720.6	0.00	1723.9	0.00	1725.2	0.38	1717.1	2.59	1710.0	2.74	1706.1	1.50	1714.0	3.75	1705.0	
09/02/16	0.47	1724.3	0.70	1715.0	0.00	1720.6	0.00	1723.9	0.00	1725.3	0.47	1717.0	2.20	1714.5	2.72	1706.0	1.53	1713.7	3.75	1705.0	
09/03/16	0.47	1724.3	0.70	1714.9	0.00	1720.6	0.00	1724.0	0.00	1725.3	0.43	1717.1	2.41	1714.6	2.69	1706.0	1.54	1713.5	3.75	1705.0	
09/04/16	0.47	1724.4	0.70	1714.8	0.00	1720.6	0.00	1724.0	0.00	1725.3	0.47	1716.9	2.89	1715.1	2.66	1706.0	1.49	1713.2	3.75	1705.0	
09/05/16	0.47	1724.4	0.70	1714.9	0.00	1720.6	0.00	1724.0	0.00	1725.3	0.40	1716.9	3.15	1715.3	2.63	1706.0	1.51	1712.9	3.75	1705.0	
09/06/16	0.47	1724.4	0.70	1714.8	0.00	1720.6	0.00	1724.0	0.00	1725.3	0.45	1717.3	3.02	1715.3	2.60	1706.2	1.48	1712.5	3.75	1705.0	
09/07/16	0.53	1724.5	0.70	1714.8	0.00	1720.6	0.00	1724.0	0.00	1725.4	0.43	1717.2	2.94	1715.3	2.56	1706.0	1.49	1711.9	3.75	1705.0	
09/08/16	0.47	1722.2	0.70	1714.7	0.00	1720.5	0.00	1724.0	0.00	1725.4	0.47	1716.6	2.80	1715.3	2.61	1706.0	1.44	1711.5	3.75	1705.0	
09/09/16	0.47	1723.8	0.70	1714.5	0.00	1720.5	0.00	1724.0	0.00	1725.0	0.45	1716.6	2.67	1715.2	2.58	1706.1	1.41	1711.4	3.68	1705.0	
09/10/16	0.23	1724.6	0.70	1715.9	0.00	1720.5	0.00	1724.0	0.00	1725.4	0.23	1718.8	1.88	1718.1	2.02	1706.0	1.41	1713.0	3.75	1705.0	
09/11/16	0.23	1726.5	0.70	1714.9	0.00	1720.5	0.00	1723.9	0.00	1725.3	0.24	1718.4	1.88	1718.5	1.87	1706.0	1.40	1711.3	3.75	1705.0	
09/12/16	0.23	1726.8	0.70	1714.8	0.00	1720.6	0.00	1723.9	0.00	1725.3	0.26	1718.1	1.88	1718.8	1.88	1706.0	1.41	1711.2	3.75	1705.0	
09/13/16	0.23	1726.7	0.70	1714.5	0.00	1720.5	0.00	1723.9	0.00	1725.3	0.25	1718.2	1.87	1718.9	1.87	1706.0	1.42	1711.1	3.75	1705.0	
09/14/16	0.23	1726.7	0.70	1714.5	0.00	1720.6	0.00	1723.8	0.00	1725.3	0.36	1718.4	1.88	1718.9	1.88	1706.0	1.42	1711.0	3.75	1705.0	
09/15/16	0.23	1726.7	1.03	1714.5	0.00	1720.6	0.00	1723.8	0.00	1725.2	0.61	1718.4	3.18	1719.0	1.88	1706.0	1.41	1710.8	3.75	1705.0	
09/16/16	0.23	1726.7	1.17	1709.8	0.00	1720.4	0.00	1723.8	0.00	1725.2	0.65	1710.0	3.75	1715.7	2.14	1706.0	1.41	1710.6	3.75	1705.0	
09/17/16	0.23	1726.7	1.17	1709.7	0.00	1720.4	0.00	1723.7	0.00	1725.2	0.64	1710.0	3.75	1716.0	2.45	1706.0	1.40	1710.3	3.75	1705.0	
09/18/16	0.23	1726.2	1.10	1709.7	0.00	1720.0	0.00	1723.7	0.00	1725.2	0.52	1710.0	3.74	1716.2	2.44	1706.2	1.40	1709.9	3.75	1705.0	
09/19/16	0.23	1726.2	0.94	1710.0	0.00	1720.4	0.00	1723.6	0.00	1725.1	0.59	1711.6	2.70	1716.4	2.44	1706.1	1.40	1709.6	3.75	1705.0	
09/20/16	0.23	1726.2	0.94	1710.2	0.00	1720.4	0.00	1723.6	0.00	1725.1	0.70	1710.7	3.72	1716.6	2.44	1706.1	1.39	1709.2	3.75	1705.0	
09/21/16	0.23	1726.3	0.94	1710.4	0.00	1720.4	0.00	1723.6	0.00	1725.1	0.70	1710.1	3.75	1716.6	2.43	1706.1	1.40	1709.0	3.75	1705.0	
09/22/16	0.23	1723.4	0.94	1710.6	0.00	1720.4	0.00	1723.6	0.00	1725.1	0.70	1710.4	2.59	1716.6	2.44	1706.0	1.39	1708.8	3.75	1705.0	
09/23/16	0.23	1723.5	0.94	1710.4	0.00	1720.4	0.00	1723.6	0.00	1725.1	0.70	1710.7	1.87	1717.3	2.45	1706.3	1.39	1708.7	3.75	1705.0	
09/24/16	0.23	1723.6	0.94	1710.7	0.00	1720.5	0.00	1723.5	0.00	1725.1	0.47	1713.1	1.88	1717.5	2.48	1706.3	1.39	1708.7	3.75	1705.0	
09/25/16	0.23	1723.6	0.94	1710.9	0.00	1720.5	0.00	1723.5	0.00	1725.0	0.47	1713.6	1.87	1717.6	2.50	1706.2	1.39	1708.7	3.75	1705.0	
09/26/16	0.23	1723.6	0.94	1711.0	0.00	1720.6	0.00	1723.5	0.00	1725.0	0.47	1712.7	1.88	1717.7	2.51	1706.0	1.39	1708.7	3.75	1705.0	
09/27/16	0.23	1723.5	0.94	1711.0	0.00	1720.6	0.00	1723.5	0.00	1725.0	0.47	1712.9	1.88	1717.8	2.51	1706.2	1.39	1708.7	3.75	1705.0	
09/28/16	0.23	1723.5	0.94	1711.1	0.00	1720.6	0.00	1723.5	0.00	1725.0	0.47	1713.4	1.87	1717.8	2.52	1706.1	1.39	1708.7	3.75	1705.0	
09/29/16	0.23	1723.5	0.94	1711.4	0.00	1720.6	0.00	1723.5	0.00	1725.0	0.47	1713.0	1.88	1717.8	2.52	1706.0	1.39	1708.7	3.75	1705.0	
09/30/16	0.24	1723.0	0.94	1711.1	0.00	1720.6	0.00	1723.5	0.00	1725.0	0.47	1713.5	3.36	1717.9	2.50	1706.3	1.38	1708.7	3.75	1705.0	
Monthly Average	0.31	1724.8	0.85	1712.7	0.00	1720.5	0.00	1723.8	0.00	1725.2	0.48	1714.6	2.59	1716.6	2.40	1706.1	1.42	1710.7	3.75	1705.0	
Analytical	Conc (mg/L)	Date	Conc (mg/L)	Date	Conc (mg/L)	Date	Conc (mg/L)	Date	Conc (mg/L)	Date	Conc (mg/L)	Date	Conc (mg/L)	Date	Conc (mg/L)	Date	Conc (mg/L)	Date	Conc (mg/L)	Date	
Perchlorate	1900	9/7/2016	87	9/7/2016	120	9/7/2016	140	9/7/2016	130	9/7/2016	350	9/7/2016	630	9/7/2016	630	9/7/2016	500	9/7/2016	740	9/7/2016	
Hexavalent Chromium	ND	9/7/2016	0.084	9/7/2016	0.013	9/7/2016	ND	9/7/2016	0.035	9/7/2016	0.085	9/7/2016	3.1	9/7/2016	12	9/7/2016	12	9/7/2016	18	9/7/2016	
Total Chromium	0.53	9/7/2016	0.053	9/7/2016	0.017	9/7/2016	0.43	9/7/2016	0.55	9/7/2016	0.048	9/7/2016	2.6	9/7/2016	6.3	9/7/2016	8.6	9/7/2016	12	9/7/2016	

Notes:
 Flow reported as gpm is a daily average calculated from the totalizer reading. NA=Not Available.
 1: Analytical results are reported from TestAmerica.

Table 3 - Interceptor Well Field (IWF) Operational Metrics

Nevada Environmental Response Trust Groundwater Extraction and Treatment System Enhanced Operational Metrics																					
Date	I-G		I-H		I-I		I-J		I-K		I-L		I-M		I-N		I-O		I-P		
	Flow ² (gpm)	Water Elevation (ft amsl)	Flow (gpm)	Water Elevation (ft amsl)	Flow (gpm)	Water Elevation (ft amsl)	Flow ³ (gpm)	Water Elevation (ft amsl)	Flow (gpm)	Water Elevation (ft amsl)	Flow (gpm)	Water Elevation (ft amsl)	Flow (gpm)	Water Elevation (ft amsl)	Flow (gpm)	Water Elevation (ft amsl)	Flow (gpm)	Water Elevation (ft amsl)	Flow (gpm)	Water Elevation (ft amsl)	
09/01/16	0.15	1711.1	1.22	1709.2	5.62	1721.8	5.89	1722.8	1.87	1720.6	1.89	1711.8	1.87	1720.3	3.75	1712.0	0.47	1721.2	2.81	1709.5	
09/02/16	0.15	1711.1	1.21	1709.2	5.62	1721.8	5.88	1722.9	1.87	1720.7	1.90	1711.6	1.88	1720.5	3.75	1712.0	0.47	1721.2	2.81	1709.5	
09/03/16	0.15	1711.1	1.23	1709.1	5.63	1721.9	5.89	1722.9	1.88	1720.8	1.91	1711.6	1.88	1720.5	3.75	1712.0	0.47	1721.2	2.81	1709.5	
09/04/16	0.15	1711.1	1.21	1709.1	5.62	1721.9	5.94	1723.0	1.87	1720.9	1.93	1711.5	1.87	1720.5	3.75	1712.0	0.47	1721.2	2.81	1709.5	
09/05/16	0.14	1711.1	1.24	1709.2	3.84	1721.9	5.94	1723.0	1.88	1720.9	1.98	1711.8	1.88	1720.5	3.75	1712.0	0.47	1721.2	2.81	1709.5	
09/06/16	0.14	1711.1	1.24	1709.1	3.75	1721.9	5.94	1723.0	1.87	1720.9	2.00	1711.5	1.87	1720.5	3.75	1712.0	0.47	1721.2	2.81	1709.5	
09/07/16	0.13	1711.1	1.24	1709.2	3.75	1721.9	0.84	1723.1	1.88	1721.0	1.88	1711.6	1.61	1720.4	3.75	1712.0	0.80	1721.2	2.79	1709.5	
09/08/16	0.13	1711.1	1.23	1709.2	3.75	1721.9	5.39	1723.1	1.88	1721.0	1.86	1711.8	1.41	1720.5	3.75	1711.9	0.61	1721.1	2.76	1710.7	
09/09/16	0.13	1711.1	1.23	1709.2	3.72	1721.9	7.45	1710.5	1.86	1720.8	1.85	1711.8	1.40	1720.5	3.68	1711.9	0.75	1721.1	2.74	1709.5	
09/10/16	0.00	1715.7	1.23	1709.1	3.75	1721.8	7.50	1709.8	1.88	1720.7	1.95	1711.6	1.41	1720.9	3.75	1712.0	0.51	1721.1	2.73	1709.6	
09/11/16	0.00	1720.1	1.21	1709.2	3.75	1721.7	7.50	1707.0	1.87	1720.5	1.97	1711.7	1.41	1720.9	3.75	1712.0	0.48	1721.1	2.72	1709.4	
09/12/16	0.12	1720.2	1.23	1709.2	3.75	1721.6	7.50	1707.0	1.88	1720.5	1.97	1711.7	1.41	1721.0	3.75	1712.0	0.61	1721.1	2.81	1709.5	
09/13/16	0.12	1711.1	1.15	1709.1	3.75	1721.6	7.50	1707.0	1.87	1720.4	2.00	1711.5	1.33	1721.0	3.75	1712.0	0.88	1721.0	2.88	1709.5	
09/14/16	0.13	1711.1	1.09	1709.1	3.75	1721.5	7.50	1707.0	1.88	1720.3	1.99	1711.6	0.94	1721.1	3.75	1712.0	0.88	1721.0	2.85	1709.7	
09/15/16	0.13	1711.1	1.07	1709.1	3.75	1721.5	7.50	1707.0	3.03	1720.3	1.99	1711.7	1.59	1721.1	3.75	1712.0	0.93	1721.0	2.81	1709.4	
09/16/16	0.13	1711.1	1.08	1709.1	3.75	1721.5	7.50	1707.0	3.75	1717.4	1.95	1711.7	1.88	1719.9	3.75	1712.0	0.71	1720.9	2.81	1709.7	
09/17/16	0.13	1711.1	1.07	1709.1	3.75	1721.5	7.50	1707.0	3.75	1717.2	1.92	1711.7	1.87	1719.9	3.75	1712.0	0.65	1720.9	2.78	1709.4	
09/18/16	0.13	1711.1	1.03	1709.1	3.75	1721.5	7.50	1707.0	3.75	1717.0	1.94	1711.6	1.88	1720.0	3.75	1712.0	0.56	1720.9	2.73	1710.0	
09/19/16	0.13	1711.1	0.99	1709.2	3.75	1721.4	7.50	1707.0	3.75	1717.0	1.94	1711.7	1.87	1720.0	3.75	1712.0	0.53	1720.9	2.68	1709.3	
09/20/16	0.13	1711.1	1.03	1709.1	3.75	1721.4	7.50	1707.0	3.75	1716.9	1.89	1711.7	1.88	1720.0	3.75	1712.0	0.80	1720.9	2.77	1709.5	
09/21/16	0.13	1711.1	0.98	1709.2	3.75	1721.4	7.50	1707.0	3.75	1716.9	1.96	1711.8	1.88	1720.0	3.75	1712.0	0.84	1720.9	2.77	1710.3	
09/22/16	0.13	1711.1	1.00	1709.1	3.75	1721.4	7.50	1707.0	3.49	1717.0	2.00	1711.7	1.87	1720.0	3.75	1712.0	0.94	1720.9	2.74	1709.4	
09/23/16	0.12	1711.1	0.96	1709.1	3.75	1721.4	7.50	1707.0	2.27	1717.0	2.05	1711.7	1.00	1720.1	3.75	1712.0	0.94	1720.8	2.71	1709.5	
09/24/16	0.13	1711.0	0.94	1709.0	3.75	1721.3	7.50	1707.0	1.87	1717.0	2.08	1711.8	0.94	1720.7	3.75	1712.0	0.82	1720.8	2.67	1709.9	
09/25/16	0.13	1711.0	0.94	1709.1	3.75	1721.3	7.50	1707.0	1.88	1716.9	2.10	1711.5	0.94	1720.7	3.75	1712.0	0.28	1720.9	2.68	1709.5	
09/26/16	0.13	1711.0	0.96	1709.1	3.75	1721.3	7.50	1707.0	1.88	1716.9	2.11	1711.6	0.94	1720.7	3.75	1712.0	0.00	1721.2	2.69	1709.8	
09/27/16	0.13	1711.0	0.98	1709.1	3.75	1721.4	7.50	1707.0	1.88	1716.9	2.12	1711.6	0.94	1720.8	3.75	1712.0	0.00	1721.3	2.72	1709.8	
09/28/16	0.13	1711.0	0.95	1709.1	3.75	1721.4	7.50	1707.0	1.87	1716.9	2.12	1711.6	0.94	1720.8	3.75	1712.0	0.35	1721.3	2.73	1709.4	
09/29/16	0.13	1711.0	0.94	1709.1	3.75	1721.3	7.50	1707.0	1.87	1716.9	2.12	1711.6	0.94	1720.8	3.75	1712.0	0.47	1720.9	2.67	1709.5	
09/30/16	0.12	1711.0	0.94	1709.1	3.75	1721.3	7.50	1707.0	3.63	1716.9	2.10	1711.7	1.83	1720.8	3.75	1712.0	0.47	1720.8	2.64	1709.5	
Monthly Average	0.12	1711.8	1.09	1709.1	4.00	1721.6	6.89	1711.5	2.41	1718.8	1.98	1711.7	1.51	1720.5	3.75	1712.0	0.59	1721.0	2.76	1709.6	
Analytical ¹	Conc (mg/L)	Date	Conc (mg/L)	Date	Conc (mg/L)	Date	Conc (mg/L)	Date	Conc (mg/L)	Date	Conc (mg/L)	Date	Conc (mg/L)	Date	Conc (mg/L)	Date	Conc (mg/L)	Date	Conc (mg/L)	Date	
Perchlorate	1700	9/7/2016	1500	9/7/2016	650	9/7/2016	310	9/13/2016	230	9/7/2016	710	9/7/2016	620	9/7/2016	640	9/7/2016	850	9/7/2016	890	9/7/2016	
Hexavalent Chromium	29	9/7/2016	27	9/7/2016	18	9/7/2016	7.0	9/13/2016	2.8	9/7/2016	0.95	9/7/2016	10	9/7/2016	13	9/7/2016	25	9/7/2016	23	9/7/2016	
Total Chromium	22	9/7/2016	22	9/7/2016	11	9/7/2016	3.5	9/13/2016	1.9	9/7/2016	0.55	9/7/2016	7.5	9/7/2016	7.6	9/7/2016	20	9/7/2016	19	9/7/2016	

Notes:
 Flow reported as gpm is a daily average calculated from the totalizer reading. NA=Not Available.
 1: Analytical results are reported from TestAmerica.
 2: Well I-G turned on 09/12 after ETI noticed it was off 09/10 to 09/11.
 3: Well I-J motor replaced on 09/07.

Nevada Environmental Response Trust Groundwater Extraction and Treatment System Enhanced Operational Metrics																					
Date	I-Q		I-R		I-S		I-T		I-U		I-V		I-W		I-X		I-Y		I-Z		
	Flow (gpm)	Water Elevation (ft amsl)	Flow (gpm)	Water Elevation (ft amsl)	Flow (gpm)	Water Elevation (ft amsl)	Flow (gpm)	Water Elevation (ft amsl)	Flow (gpm)	Water Elevation (ft amsl)	Flow (gpm)	Water Elevation (ft amsl)	Flow (gpm)	Water Elevation (ft amsl)	Flow (gpm)	Water Elevation (ft amsl)	Flow (gpm)	Water Elevation (ft amsl)	Flow (gpm)	Water Elevation (ft amsl)	
09/01/16	0.63	1711.7	1.41	1707.0	3.75	1710.0	0.47	1705.0	0.86	1707.4	3.75	1719.3	0.94	1710.0	1.87	1710.9	1.40	1707.9	7.50	1712.4	
09/02/16	0.62	1711.6	1.41	1707.0	3.75	1710.0	0.47	1705.0	0.86	1707.4	3.75	1719.4	0.94	1710.0	1.87	1710.6	1.39	1714.3	7.50	1712.6	
09/03/16	0.61	1711.5	1.41	1707.0	3.75	1710.0	0.47	1705.0	0.86	1707.4	3.75	1719.4	0.94	1710.0	1.88	1710.6	1.36	1715.7	7.52	1712.8	
09/04/16	0.60	1711.6	1.41	1707.0	3.75	1710.0	0.47	1705.0	0.86	1707.4	3.75	1719.5	0.94	1710.0	1.87	1710.5	0.92	1716.2	7.48	1713.0	
09/05/16	0.59	1711.4	1.41	1707.0	3.75	1710.0	0.47	1705.0	0.86	1707.3	3.75	1719.5	0.94	1710.0	1.88	1711.2	0.89	1716.8	7.50	1713.1	
09/06/16	0.58	1711.4	1.43	1707.0	3.75	1710.0	0.47	1705.0	0.86	1707.3	3.75	1719.5	0.94	1710.0	1.87	1711.3	0.90	1717.6	7.50	1713.2	
09/07/16	0.57	1711.5	1.41	1707.0	3.75	1710.0	0.47	1705.0	0.86	1707.4	3.75	1719.5	0.94	1710.0	1.89	1710.9	1.76	1718.1	7.50	1713.3	
09/08/16	0.56	1711.4	1.41	1707.0	3.75	1710.0	0.47	1705.0	0.86	1707.4	3.75	1719.5	0.94	1710.0	1.88	1713.4	1.57	1705.0	7.50	1713.4	
09/09/16	0.56	1711.7	1.36	1707.0	3.68	1710.0	0.47	1705.0	0.85	1707.4	3.72	1719.4	0.92	1710.0	1.84	1713.5	1.37	1708.6	7.45	1711.8	
09/10/16	0.55	1711.5	1.12	1707.0	3.75	1710.0	0.47	1705.0	0.86	1709.7	3.75	1719.4	0.93	1716.3	1.88	1715.2	1.58	1716.3	7.50	1711.6	
09/11/16	0.58	1711.7	1.18	1707.0	3.75	1710.0	0.47	1705.0	0.85	1707.3	3.75	1719.2	0.94	1712.2	1.87	1713.9	1.82	1714.0	7.50	1710.4	
09/12/16	0.59	1711.4	1.32	1707.0	3.75	1710.0	0.47	1705.0	0.85	1707.3	3.75	1719.2	0.94	1711.9	1.88	1714.0	1.82	1713.6	7.50	1710.0	
09/13/16	0.58	1711.4	1.13	1707.0	3.75	1710.0	0.47	1705.0	0.85	1707.3	3.75	1719.2	0.94	1710.5	1.87	1713.9	1.29	1714.6	7.50	1710.0	
09/14/16	0.57	1711.5	1.24	1707.0	3.75	1710.0	0.47	1705.0	0.85	1707.3	3.75	1719.0	0.94	1710.0	1.88	1714.0	0.90	1716.2	7.50	1710.0	
09/15/16	0.58	1711.6	1.21	1707.0	3.75	1710.0	0.47	1705.0	0.85	1707.3	3.75	1719.0	0.94	1710.0	1.87	1713.9	1.57	1716.3	7.50	1710.0	
09/16/16	0.59	1711.5	1.28	1707.0	3.75	1710.0	0.47	1705.0	0.84	1707.3	3.75	1719.0	0.94	1710.2	1.88	1713.6	1.83	1705.0	7.50	1710.0	
09/17/16	0.59	1711.6	1.30	1707.0	3.75	1710.0	0.47	1705.0	0.84	1707.4	3.75	1718.9	0.94	1710.1	1.87	1713.5	1.55	1714.0	7.50	1710.0	
09/18/16	0.59	1711.4	1.17	1707.0	3.75	1710.0	0.47	1705.0	0.85	1707.4	3.75	1718.9	0.94	1710.0	1.88	1713.4	0.92	1717.7	7.50	1710.0	
09/19/16	0.58	1711.6	1.07	1707.0	3.75	1710.0	0.47	1705.0	0.84	1707.4	3.75	1718.9	0.94	1710.0	1.87	1713.3	0.92	1715.5	7.50	1710.0	
09/20/16	0.57	1711.4	1.50	1707.0	3.75	1710.0	0.47	1705.0	0.84	1707.3	3.75	1718.8	0.94	1710.0	1.88	1713.2	0.94	1716.1	7.50	1710.0	
09/21/16	0.57	1711.4	1.88	1707.0	3.75	1710.0	0.47	1705.0	0.84	1707.4	3.75	1718.8	0.94	1710.0	1.88	1713.2	0.93	1716.1	7.50	1710.0	
09/22/16	0.56	1711.6	1.87	1707.0	3.75	1710.0	0.47	1705.0	0.84	1707.4	3.75	1718.8	0.94	1710.0	1.87	1713.2	0.92	1716.1	7.50	1710.0	
09/23/16	0.55	1711.7	0.98	1707.0	3.75	1710.0	0.47	1705.0	0.84	1707.4	3.75	1718.7	0.94	1710.0	1.87	1713.2	0.92	1717.5	7.50	1710.0	
09/24/16	0.54	1711.5	0.94	1707.0	3.75	1710.0	0.47	1705.0	0.84	1707.3	3.75	1718.7	0.94	1710.0	1.87	1713.3	0.92	1718.0	7.50	1710.0	
09/25/16	0.54	1711.5	0.94	1707.0	3.75	1710.0	0.47	1705.0	0.84	1707.3	3.75	1718.6	0.94	1710.0	1.87	1713.3	0.91	1718.2	7.50	1710.0	
09/26/16	0.54	1711.6	0.94	1707.0	3.75	1710.0	0.47	1705.0	0.84	1707.4	3.75	1718.7	0.94	1710.0	1.88	1713.2	0.91	1718.6	7.50	1710.0	
09/27/16	0.53	1711.5	0.94	1707.0	3.75	1710.0	0.47	1705.0	0.84	1707.3	3.75	1718.7	0.94	1710.0	1.88	1713.3	0.91	1719.0	7.50	1710.0	
09/28/16	0.53	1711.4	0.94	1707.0	3.75	1710.0	0.47	1705.0	0.83	1707.4	3.75	1718.7	0.94	1710.0	1.87	1713.3	0.93	1718.9	7.50	1710.0	
09/29/16	0.53	1711.4	0.94	1707.0	3.75	1710.0	0.47	1705.0	0.83	1707.3	3.75	1718.6	0.94	1710.0	1.87	1713.4	0.92	1718.8	7.50	1710.0	
09/30/16	0.53	1711.4	0.94	1707.0	3.75	1710.0	0.47	1705.0	0.83	1707.4	3.75	1718.6	0.94	1710.0	1.87	1713.4	1.65	1719.3	7.50	1710.0	
Monthly Average	0.57	1678.2	1.25	1707.0	3.75	1710.0	0.47	1705.0	0.85	1707.4	3.75	1719.0	0.94	1710.4	1.87	1712.9	1.22	1715.3	7.50	1710.9	
Analytical	Conc (mg/L)	Date	Conc (mg/L)	Date	Conc (mg/L)	Date	Conc (mg/L)	Date	Conc (mg/L)	Date	Conc (mg/L)	Date	Conc (mg/L)	Date	Conc (mg/L)	Date	Conc (mg/L)	Date	Conc (mg/L)	Date	
Perchlorate	1100	9/7/2016	1000	9/7/2016	470	9/7/2016	1700	9/7/2016	1700	9/7/2016	840	9/7/2016	1000	9/7/2016	1100	9/7/2016	1300	9/7/2016	330	9/7/2016	
Hexavalent Chromium	26	9/7/2016	0.34	9/7/2016	1.5	9/7/2016	27	9/7/2016	25	9/7/2016	21	9/7/2016	23	9/7/2016	14	9/7/2016	0.67	9/7/2016	15	9/7/2016	
Total Chromium	23	9/7/2016	0.31	9/7/2016	1.0	9/7/2016	26	9/7/2016	22	9/7/2016	15	9/7/2016	18	9/7/2016	9.0	9/7/2016	0.40	9/7/2016	7.5	9/7/2016	

Notes:
 Flow reported as gpm is a daily average calculated from the totalizer reading. NA=Not Available.
 1: Analytical results are reported from TestAmerica.

Nevada Environmental Response Trust Groundwater Extraction and Treatment System Enhanced Operational Metrics																	
Date	LS #2	GWTP Effluent				GW-11 Influent				FBR Plant Influent ¹							
	Flow ² (gpm)	Flow (gpm)	TA - Cr (TR) (mg/L)	TA - Cr (VI) (mg/L)	TA - ClO ₄ (mg/L)	Flow ⁴ (gpm)	Cr (TR) (mg/L)	Cr (VI) (mg/L)	ClO ₄ (mg/L)	Flow ^{4,5,6,7} (gpm)	TA - ClO ₄ (mg/L)	ETI - ClO ₄ (mg/L)	TA - ClO ₃ (mg/L)	TA - SO ₄ (mg/L)	TA - NO ₃ - N (mg/L)	TA - Cr (TR) (mg/L)	TA - Cr (VI) (mg/L)
09/01/16	937	60	1.8	ND	720	957				844		75					
09/02/16	937	59				960				782		74					
09/03/16	939	58				960				842	79	66					
09/04/16	936	57				960				790		65					
09/05/16	938	58				960				812		68					
09/06/16	937	57				960				922		69					
09/07/16	937	59				966	0.17	0.074	75	911		69	150	1,600	6.1	0.029	0.026
09/08/16	937	70	2.8	ND	710	958				926		73					
09/09/16	937	69				970				895		72					
09/10/16	938	64				959				835	66	75					
09/11/16	938	65				963				824		75					
09/12/16	937	65				962				822		75					
09/13/16	937	66				291				1,003		89			5.5	0.024	0.012
09/14/16	938	64				0				1,002		85					
09/15/16	938	70	0.30	ND	660	0				1,008		84					
09/16/16	938	71				0				1,008		89					
09/17/16	937	71				0				1,008	74	83					
09/18/16	937	69				0				1,007		86					
09/19/16	937	69				0				1,006		86			9.3	0.066	0.072
09/20/16	938	67				0				1,005		81					
09/21/16	938	68				0				1,006		86					
09/22/16	938	67	0.14	ND	560	0				1,005		84					
09/23/16	937	66				0				1,004		85					
09/24/16	937	65				0				1,002	87	84					
09/25/16	938	65				0				1,003		83					
09/26/16	937	65				0				1,002		79					
09/27/16	938	65				0				1,004		83			9.3	0.060	0.061
09/28/16	937	66				0				1,003		83					
09/29/16	703	65	0.10	ND	680	85				810		79					
09/30/16	704	71				29				810		74					
Monthly Average ²	922	65	1.0	ND	658	398	0.17	0.074	75	930	78	79	150	1,600	7.6	0.046	0.044

Notes:
 Flow reported as gpm is a daily average calculated from the totalizer reading.
 ND = Not detected above laboratory method detection limit (ClO₄ = 0.5 ug/L; ClO₃ = 10 ug/L; NO₃-N = 0.055 mg/L, CR(VI) = 0.25 ug/L); NA = Not Available, sample result not reported.
 1: ETI = Envirogen internal process control data, TA = TestAmerica data.
 2: All average concentrations reported are monthly flow weighted averages.
 3: LS #2, LS #3 and AWF turned off for pump upgrade on 09/28.
 4: Flows bypassed GW-11 Influent and FBR Plant Influent totalizers from 09/13 to 09/30 with partial days 09/25, 09/29, and 09/30 due to FBR plant influent strainers clogging.
 5: FBR Plant Influent flow decreased 09/01 to 09/05 due to transferring contents of FBR A to FBR 4.
 6: FBR Plant Influent flows estimated using LS #2 and GWTP from 09/13 to 09/29.
 7: FBR Plant Influent flow estimated using 1st Stage FBR Influent on 09/29 and 09/30 due to transition to TK-101 for influent flow during pump upgrade.

Table 4 - Treatment Plant Operational Metrics

Nevada Environmental Response Trust Groundwater Extraction and Treatment System Enhanced Operational Metrics																
Date	1st Stage FBR Influent			2nd Stage FBR Influent			FBR Plant Effluent ¹									
	Flow (gpm)	pH (s.u.)	ORP (mV)	Flow (gpm)	pH (s.u.)	ORP (mV)	Flow ⁸ (gpm)	TA - ClO ₂ (mg/L)	ETI - ClO ₂ (mg/L)	TA - ClO ₃ (mg/L)	TA - Cr (TR) (mg/L)	TA - Cr (VI) (mg/L)	TA - SO ₄ (mg/L)	TA - NO ₃ - N (mg/L)	ETI - Turbidity (NTU)	
09/01/16	601	6.1	-398	739	7.4	-485	768		ND						11	
09/02/16	596	6.2	-403	431	7.4	-482	641		ND						16	
09/03/16	628	6.1	-402	433	7.3	-483	773	ND	ND						15	
09/04/16	618	6.0	-399	886	7.3	-485	696		ND						20	
09/05/16	583	5.9	-397	489	7.3	-485	606		ND						25	
09/06/16	603	5.9	-394	772	7.2	-486	916		ND	ND		1,500	2.0		22	
09/07/16	908	5.8	-397	882	7.2	-486	881		ND						20	
09/08/16	820	5.9	-402	705	7.1	-486	907		ND						17	
09/09/16	893	5.9	-389	901	7.1	-487	799		ND						10	
09/10/16	805	6.0	-397	657	7.0	-484	715	ND	ND						15	
09/11/16	915	5.9	-392	782	6.9	-484	701		ND						15	
09/12/16	794	5.8	-379	451	6.9	-483	713		ND	0.0062	ND			ND	14	
09/13/16	814	6.0	-381	674	6.9	-480	869		ND						12	
09/14/16	943	6.0	-381	1036	6.8	-479	966		ND						11	
09/15/16	936	6.9	-369	743	6.9	-478	873		ND						9	
09/16/16	955	7.0	-374	930	7.0	-476	975		ND						10	
09/17/16	903	6.9	-320	808	6.9	-475	944	ND	ND						11	
09/18/16	903	6.9	-328	802	6.9	-477	979		ND						10	
09/19/16	927	6.9	-332	944	6.9	-481	965		ND	0.0078	ND			ND	10	
09/20/16	895	6.9	-339	709	6.9	-480	977		ND						10	
09/21/16	918	6.9	-340	813	6.9	-482	959		ND						7	
09/22/16	905	6.9	-336	985	6.9	-480	944		ND						13	
09/23/16	877	6.9	-331	902	6.9	-480	996		ND						14	
09/24/16	907	6.9	-333	789	6.9	-479	948	ND	ND						7	
09/25/16	884	6.9	-330	953	6.9	-478	925		ND						7	
09/26/16	848	7.1	-324	900	7.1	-472	825		ND	0.0075	ND				25	
09/27/16	816	7.0	-328	704	7.0	-475	939		ND				0.31		14	
09/28/16	827	7.0	-317	887	7.0	-477	814		ND						35	
09/29/16	810	7.0	-378	878	7.0	-477	839		ND						14	
09/30/16	810	7.1	-342	579	7.1	-479	432		ND						7	
Monthly Average ²	821	6.5	-362	772	7.0	-480	843	ND	ND	ND	0.011	ND	1,500	1.1	14	

Notes:

- Flow reported as gpm is a daily average calculated from the totalizer reading.
- ND = Not detected above laboratory method detection limit (ClO₂ = 0.5 ug/L; ClO₃ = 10 ug/L; NO₃-N = 0.055 mg/L, CR(VI) = 0.25 ug/L); NA = Not Available, sample result not reported.
- 1: ETI = Envirogen internal process control data, TA = TestAmerica data.
- 2: All average concentrations reported are monthly flow weighted averages.
- 8: FBR Plant Effluent flow decreased due to excessive backwashing of FBR units from 09/09 to 09/12.
- 9: FBR Plant Effluent flow decreased due to FBR plant effluent strainers clogging on 09/30 because of transition to TK-101 for influent flow during LS #2 and LS #3 pump upgrades.

GW-11 Level Monitoring		
Date	Field Measurement (ft)	Volume (MG)
9/13/2016	21.6	47.8
9/27/2016	21.3	48.2

GW-11 Leak Detection Monitoring				
Date	Amount Pumped ¹ (gallons)			
	NW Corner	NE Corner	SW Corner	SE Corner
9/9/2016	5	1,322	0	0
9/23/2016	0	579	0	0

GW-11 Composite Sample ²		
Analytes	Concentration	Units
Perchlorate	79	mg/L
Chlorate	140	mg/L
Ammonia as N	0.27	mg/L
Total Phosphorus	0.039	mg/L
Total Dissolved Solids (TDS)	6,200	mg/L
Total Suspended Solids (TSS)	11	mg/L
pH	8.55	s.u.
Calcium	360	mg/L
Iron	0.19	mg/L
Chromium (total)	0.019	mg/L
Chromium VI	0.013	mg/L
Chloride	1,800	mg/L
Nitrate as N	6.7	mg/L
Sulfate	1,600	mg/L

Notes:

ND = Not detected above laboratory method detection limit (NH₃-N= 0.1 mg/L; Total P = 0.025 ug/L; Cr(VI) = 0.25 ug/L).

1: Pumping occurs over three consecutive days. The total amount pumped over the three day period is listed with the last day pumping occurred.

2: Corner Composite Sample collected quarterly, most recent sampling results presented. Sampled on: July 13, 2016 by Envirogen.

Nevada Environmental Response Trust Groundwater Extraction and Treatment System Enhanced Operational Metrics						
Date	Flow ¹ (gpm)	FBR Influent Concentration			Influent Function Load ² (lbs/day)	6 Month Rolling Average (lbs/day)
		ClO ₄ (mg/L)	NO ₃ as N (mg/L)	ClO ₃ (mg/L)		
Oct 2015	950	86	6.0	180	587	542
Nov 2015	927	82	6.6	140	496	536
Dec 2015	919	76	8.6	160	537	537
Jan 2016	892	85	9.0	160	542	536
Feb 2016	930	93	8.8	300	846	591
Mar 2016	960	84	9.0	160	581	598
April 2016	944	84	9.0	160	572	595
May 2016	976	98	9.0	230	760	639
June 2016	902	75	9.3	130	476	629
July 2016	878	86	11	140	519	626
Aug 2016	901	80	9.2	180	577	581
Sep 2016	843	78	7.7	150	470	562

Notes:

Concentrations and flow are presented as monthly average.

1: Flow used in loading calculation is average monthly FBR effluent flow to be consistent with historical loading calculations.

2: FBR loading calculated as $[(0.9 \cdot \text{NO}_3 \text{ as N} + 0.17 \cdot \text{ClO}_3 + 0.18 \cdot \text{ClO}_4) \cdot \text{Flow} \cdot 1440 / 1000000 \cdot 8.34]$.

Figure 1 - GW-11 Pond Volume and Perchlorate Concentration

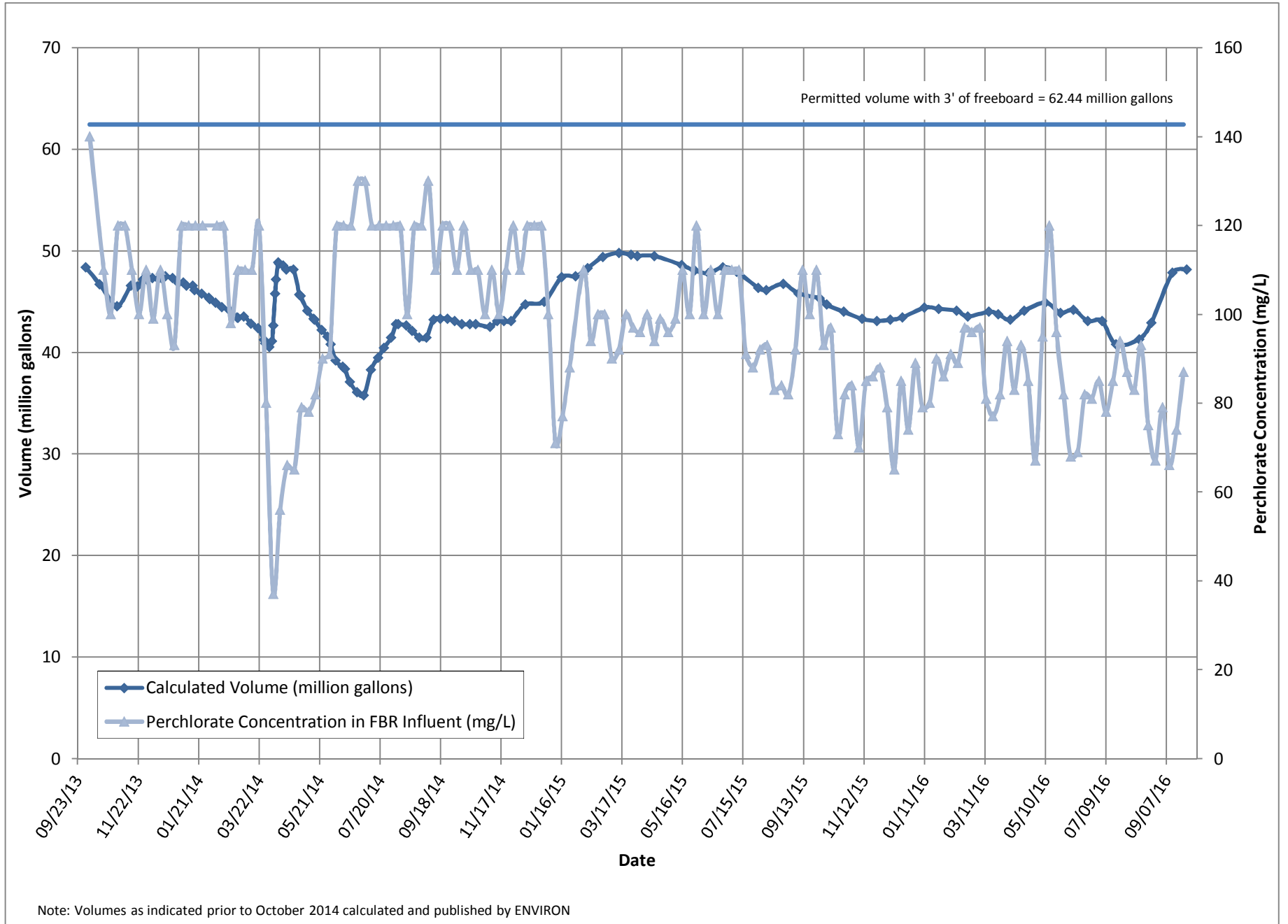


Figure 2 - FBR Equivalent Loading Calculation

