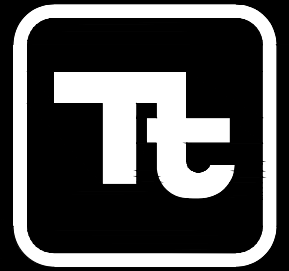


NEVADA ENVIRONMENTAL RESPONSE TRUST AP-5 POND SOLIDS REMOVAL

1489 WEST WARM SPRINGS ROAD, STE. 110
HENDERSON, NEVADA, 89014
PHONE: 702.946.6700 FAX: 702.997.7140



TETRA TECH

www.tetrattech.com

PROJECT LOCATION:
510 SOUTH FOURTH STREET
HENDERSON, NEVADA 89015

CLIENT INFORMATION:
NEVADA ENVIRONMENTAL
RESPONSE TRUST

Tt PROJECT No.:
200-01299-16002

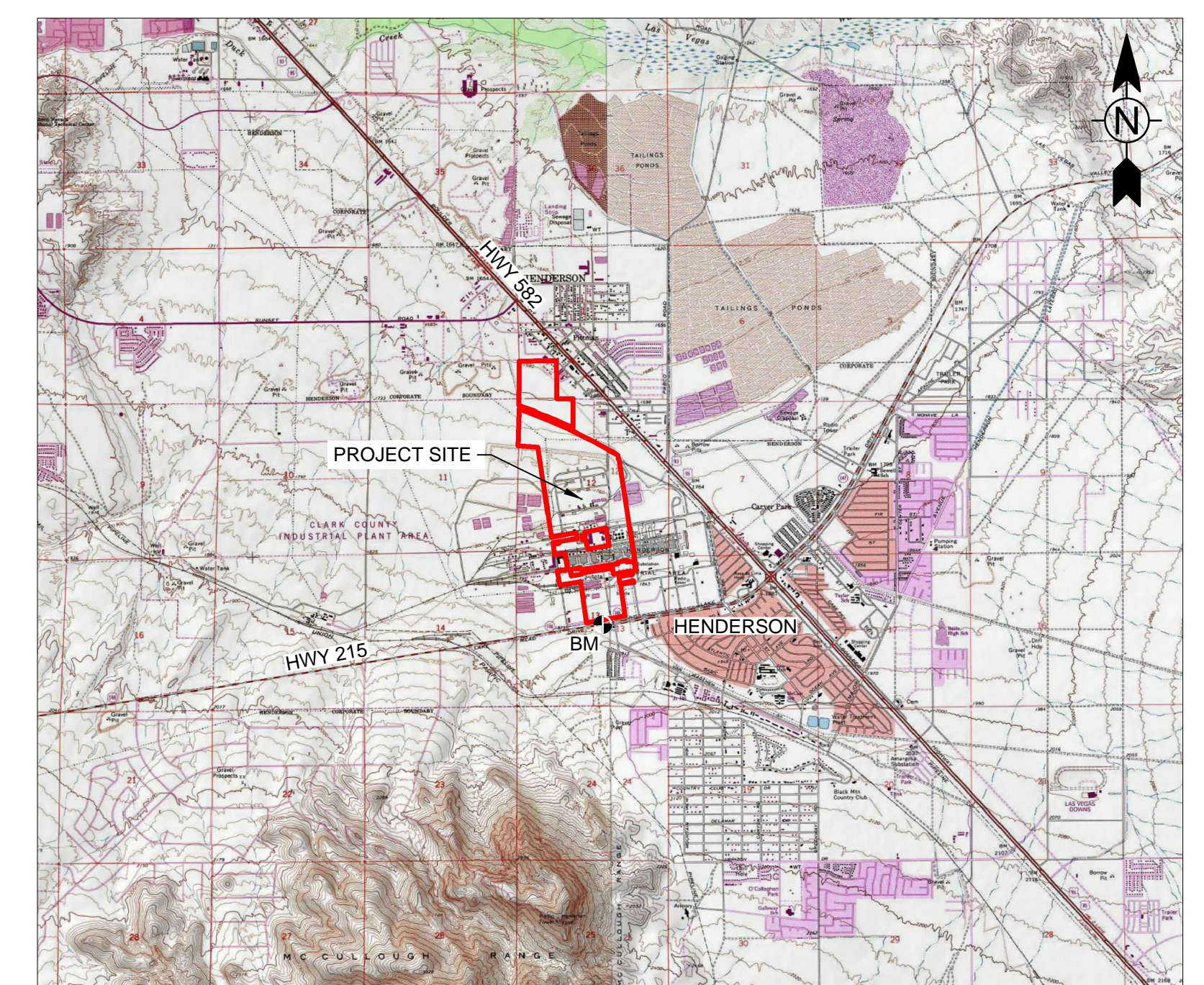
CLIENT PROJECT No.:

PROJECT DESCRIPTION / NOTES:
CWP-05: 90 PERCENT

ISSUED:

CWP-05: ISSUED FOR NDEP REVIEW

VICINITY MAP:



DRAWING INDEX	
Sheet Number	Sheet Title
GENERAL	
G-001	COVER SHEET AND DRAWING INDEX
CIVIL	
C-101	OVERALL SITE PLAN
C-204	TANK CONTAINMENT AREA GENERAL ARRANGEMENT
C-301	SOLIDS DEWATERING AREA GENERAL ARRANGEMENT
PROCESS	
D-002	TREATMENT SYSTEM PROCESS FLOW DIAGRAM
D-003	TRANSFER SYSTEM PROCESS FLOW DIAGRAM
INSTRUMENTATION	
I-001	INSTRUMENTATION LEGEND
I-200	TANK CONTAINMENT AREA TANK T-200 P&ID
I-201	TANK CONTAINMENT AREA TANK T-201 P&ID
I-202	TANK CONTAINMENT AREA TANK T-202 P&ID
I-203	TRANSFER SYSTEM TREATMENT FACILITY P&ID
I-204	TRANSFER SYSTEM RECEIVING TANK T-204 P&ID
I-205	TRANSFER SYSTEM RECEIVING TANK T-205 P&ID
I-206	SOLIDS DEWATERING AREA P&ID
I-207	COMPRESSED AIR P&ID
I-208	STABILIZED LAKE MEAD WATER P&ID



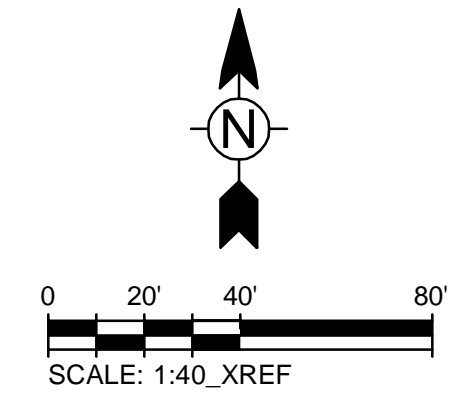
SITE PLAN

ENGINEER OF RECORD
MICHAEL SCHMIDT, PE
TETRA TECH
2110 POWERS FERRY ROAD SE, SUITE 202
ATLANTA, GA 30339
TEL: 770.738.6059
FAX: 770-850-0950
MICHAEL.SCHMIDT@TETRATECH.COM

Bar Measures 1 inch

NOT TO SCALE

8/3/2016 1:42:48 PM - \\ERS008F51\PROJECTS\IER01299\200-01299-16002\CAD\SHETS\CWP-05 GENERAL CONTRACTOR\C-101 CWP-05.DWG - REYES, HECTOR



- NOTES:**
- SEE SHEET G-004 FOR PARKING, STAGING, LAYDOWN AND STORAGE AREAS.
 - SEE SHEET C-102 FOR PIPING INFORMATION.
- LEGEND**
- EXISTING SOIL BORING LOCATIONS
 - SLMW = STABILIZED LAKE MEAD WATER

TETRA TECH

www.tetrattech.com
 1489 West Warm Springs Road, Suite 110
 Henderson, NV 89014
 Phone: 702.946.6700 Fax: 702.997.7140

MARK	DATE	DESCRIPTION	BY	FJD
1	07/01/15	FOR BID		
2	09/09/15	UPDATED NOTES		
3	05/03/16	UPDATED FOR DESIGN CHANGES	HCR	
4	07/19/16	GRADING PERMIT MODIFICATION	HCR	
f	08/03/16	CWP-05: ISSUED FOR NDEP REVIEW	HCR	

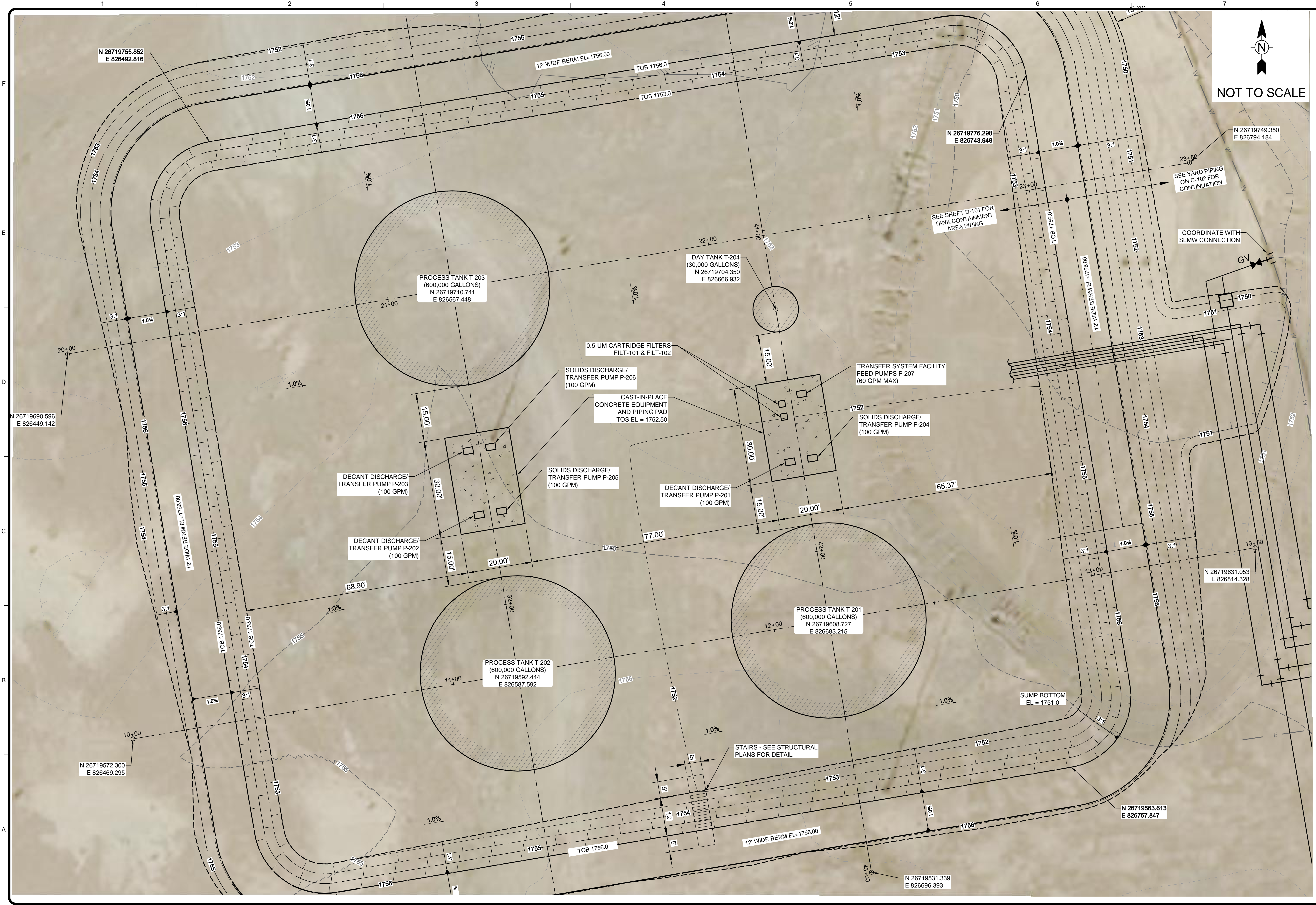
NEVADA ENVIRONMENTAL RESPONSE TRUST
 HENDERSON, NEVADA
 AP-5 POND PHASE II
 PROJECT IMPLEMENTATION
OVERALL SITE PLAN

Project No.: 200-01299-16002
 Designed By: C. FLORES
 Drawn By: H. REYES
 Checked By: J. WARNER

C-101

Copyright: Tetra Tech

8/3/2016 3:02:24 PM - \\ERS008F51\PROJECTS\IER01299\200-01299-16002\CAD\SHETS\CWP-05 GENERAL CONTRACTOR\C-204\CWP-05.DWG - REYES, HECTOR



TETRA TECH
www.tetra.tech.com
1489 West Warm Springs Road, Suite 110
Henderson, NV 89014
Phone: 702.946.6700 Fax: 702.987.7140

MARK	DATE	DESCRIPTION	BY
1	07/19/16	GRADING PERMIT MODIFICATION	HCR
2	08/03/16	CWP-05: ISSUED FOR NDEP REVIEW	HCR

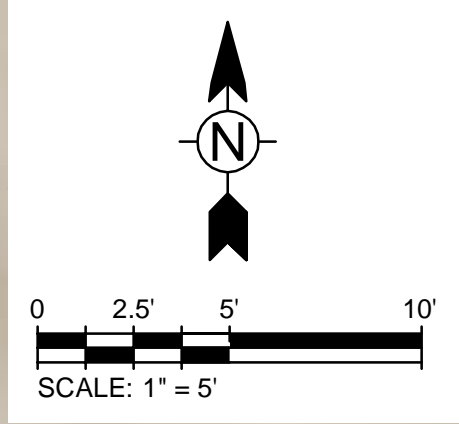
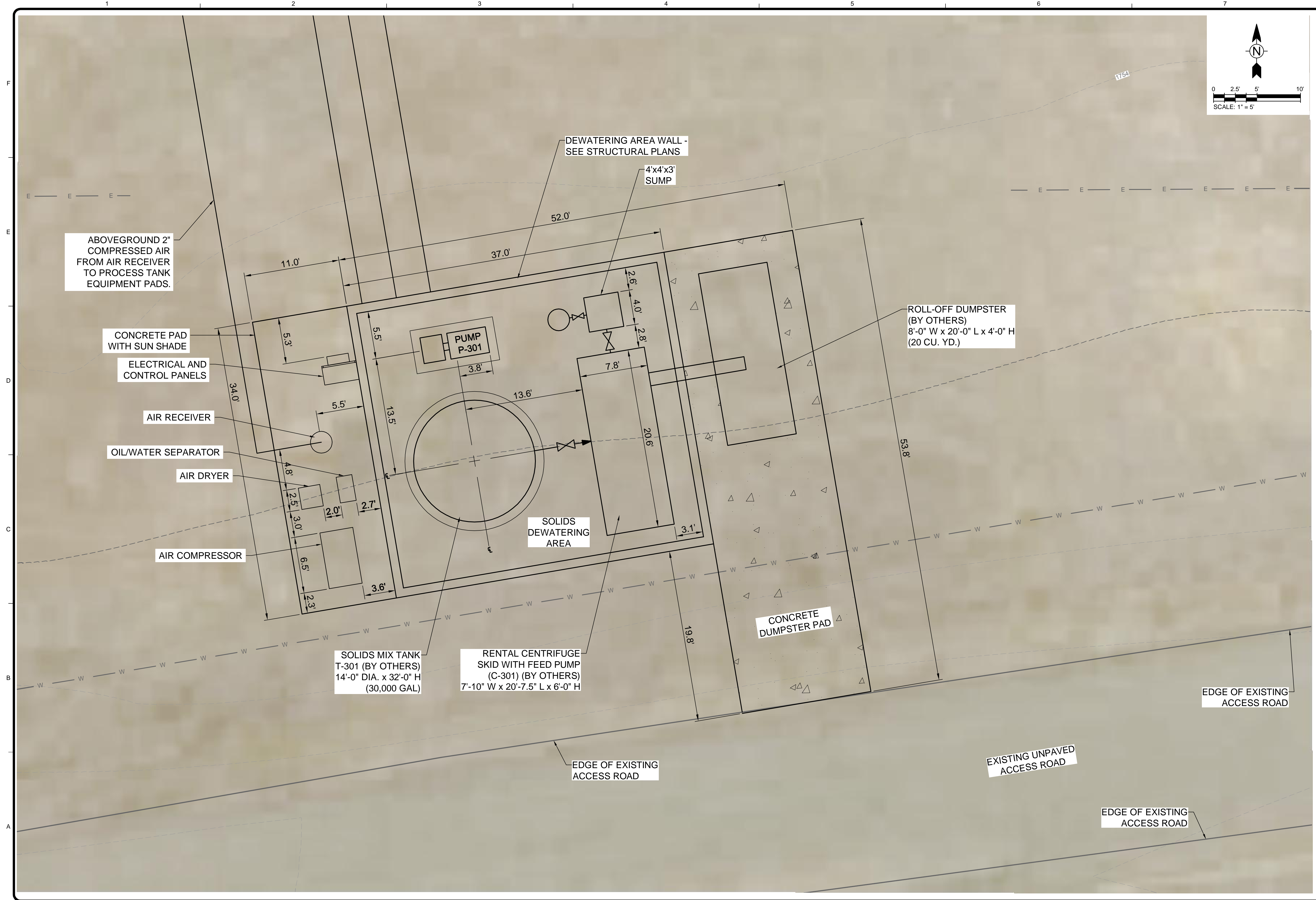
NEVADA ENVIRONMENTAL RESPONSE TRUST
HENDERSON, NEVADA
AP-5 POND PHASE II
PROJECT IMPLEMENTATION
**TANK CONTAINMENT AREA
GENERAL ARRANGEMENT**

Project No.: 200-01299-16002
Designed By: C. FLORES
Drawn By: H. REYES
Checked By: J. WARNER

C-204
Sheet

Copyright: Tetra Tech

8/3/2016 4:17:56 PM \\NERS008F51\PROJECTS\IER01299-16002\CAD\SHETS\CWP-05 GENERAL CONTRACTOR\C-301 CWP-05.DWG - REYES, HECTOR



TETRA TECH

 www.tetrattech.com
 1489 West Warm Springs Road, Suite 110
 Henderson, NV 89014
 Phone: 702.946.6700 Fax: 702.997.7140

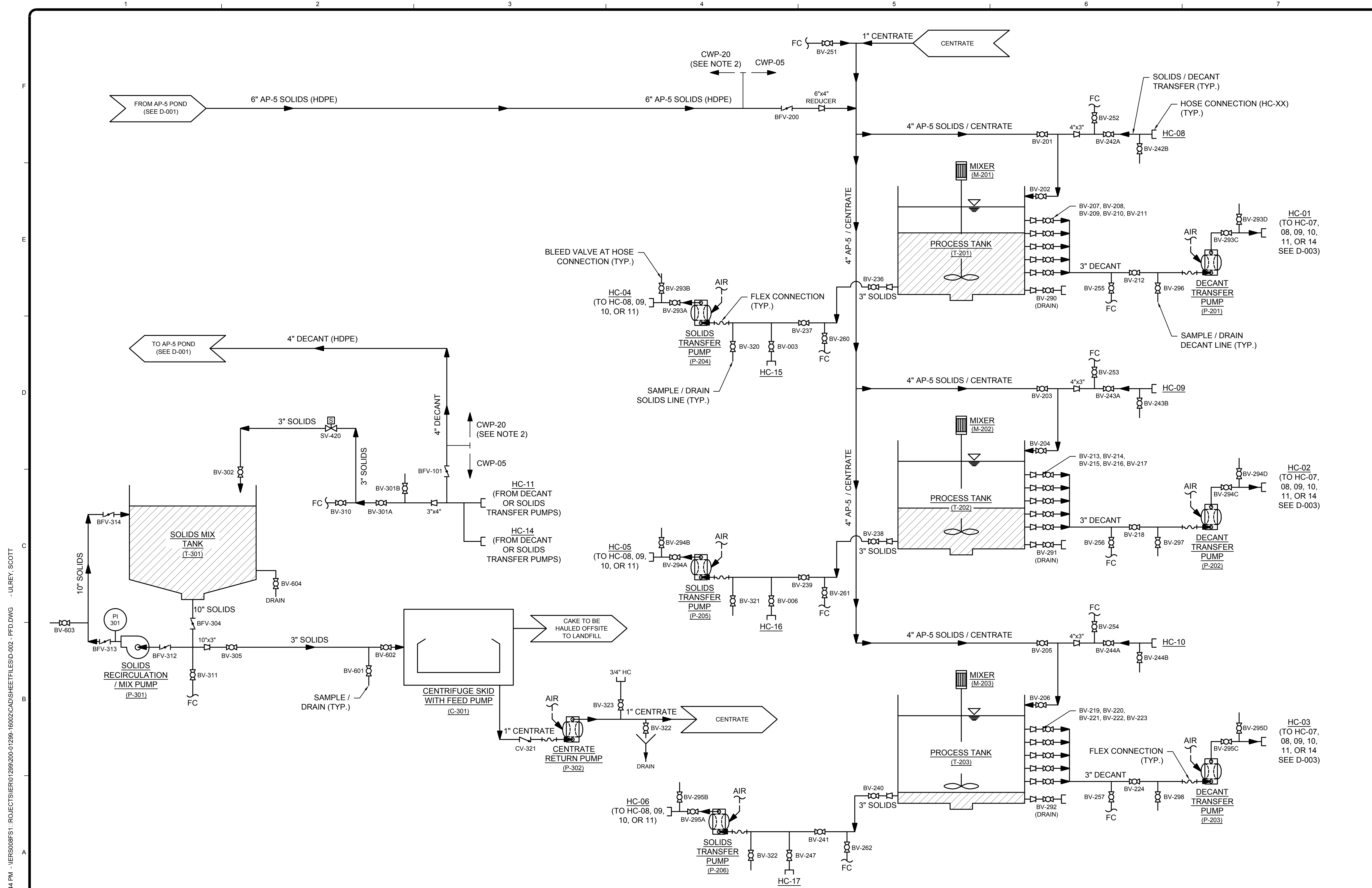
MARK	DATE	DESCRIPTION	BY	BY
1	07/19/16	GRADING PERMIT MODIFICATION	HCR	HCR
2	08/03/16	CWP-05: ISSUED FOR NDEP REVIEW	HCR	HCR

NEVADA ENVIRONMENTAL RESPONSE TRUST
 HENDERSON, NEVADA
 P-5 POND PHASE II
 PROJECT IMPLEMENTATION
**SOLIDS DEWATERING AREA
 GENERAL ARRANGEMENT**

Project No.: 200-01299-16002
 Designed By: C. FLORES
 Drawn By: H. REYES
 Checked By: J. WARNER

C-301
 Sheet

Copyright: Tetra Tech



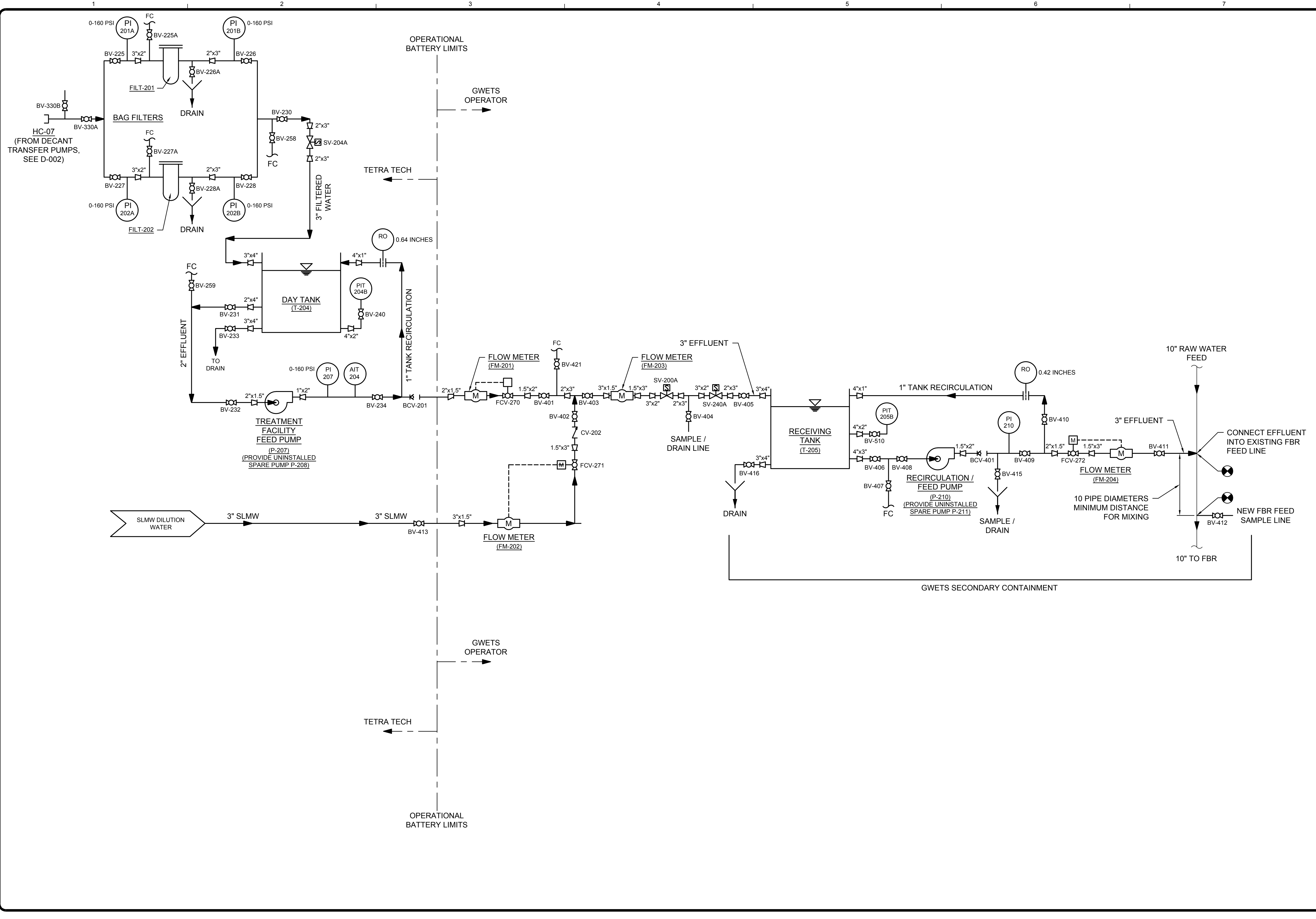
GENERAL NOTES:
 1. ALL PIPING SHALL BE SCHEDULE 80 CPVC UNLESS OTHERWISE SPECIFIED.
 2. WORK TO BE COVERED UNDER CWP-20 (TO BE DONE BY TETRA TECH).

MARK	DATE	DESCRIPTION	BY
1	8/31/16	CWP-05 ISSUED FOR NDEP REVIEW	SKU

NEVADA ENVIRONMENTAL RESPONSE TRUST
 HENDERSON, NEVADA
 AP-5 POND PHASE II
 PROJECT IMPLEMENTATION
**TREATMENT SYSTEM
 PROCESS FLOW DIAGRAM**

Project No.: 200-01299-16002
 Designed By: C FLORES
 Drawn By: S. ULREY
 Checked By: C FLORES

8/3/2016 5:16:19 PM - I:\ERS08\F5\PROJECTS\IER01299\200-01299-16002\CAD\SHEETFILES\D-003 - PFD.DWG - ULREY, SCOTT



www.tetrattech.com
 1489 West Warm Springs Road, Suite 110
 Henderson, NV 89014
 Phone: 702.946.6700 Fax: 702.997.7140

MARK	DATE	DESCRIPTION	BY	SKU
1	8/3/16	CWP-05 ISSUED FOR NDEP REVIEW		

NEVADA ENVIRONMENTAL RESPONSE TRUST
 HENDERSON, NEVADA
**AP-5 POND PHASE II
 PROJECT IMPLEMENTATION**
**TRANSFER SYSTEM
 PROCESS FLOW DIAGRAM**

Project No.: 200-01299-16002
 Designed By: C FLORES
 Drawn By: S. ULREY
 Checked By: C FLORES

D-003

Copyright: Tetra Tech

8/3/2016 4:35:21 PM - P:\NER\012939\200-01299-16002\CAD\SHEET\TESU-001 - INSTRUMENTATION LEGEND.DWG - PRATT, BRADFORD

GRAPHIC SYMBOL FOR INSTRUMENTATION ITEMS			
	LOGIC IN PLC DISPLAYED ON OIP & SCADA (INCLUDING INPUTS & OUTPUTS)		TEMPERATURE SWITCH-NC
	LOGIC IN PLC		CONTROL RELAY CONTACT-NORMALLY OPEN
	FIELD OR LOCALLY MOUNTED DEVICE		CONTROL RELAY CONTACT-NORMALLY CLOSED
	MASTER CONTROL PANEL FUNCTION (DASHED LINE - NOT ACCESSIBLE, SOLID LINE - OPERATOR ACCESSIBLE)		LIGHTNING ARRESTOR
	LOCAL CONTROL PANEL FUNCTION (DASHED LINE - NOT ACCESSIBLE, SOLID LINE - OPERATOR ACCESSIBLE)		ELAPSED TIME INDICATOR
	PANEL MOUNTED INDICATOR		PUSH-TO-TEST INDICATING LIGHT
	INTERLOCKING		BATTERY
	EXCLUSIVE OR		SECONDARY TRANSFORMER
	ALTERNATOR		VARIABLE RESISTOR
	OR		RESISTOR
	AND		MOLDED CASE CIRCUIT BREAKER
	MOTOR STARTER		SPEED SWITCH
	VARIABLE FREQUENCY DRIVE		MOMENTARY PUSHBUTTON OPERATOR- NORMALLY CLOSED
	DIGITAL INPUT TO PROGRAMMABLE CONTROLLER		MOMENTARY PUSHBUTTON OPERATOR- NORMALLY OPEN
	DIGITAL OUTPUT TO PROGRAMMABLE CONTROLLER		SELECTOR SWITCH-NORMALLY OPEN
	ANALOG INPUT TO PROGRAMMABLE CONTROLLER		PUSHBUTTON OPERATOR WITH MUSHROOM HEAD
	ANALOG OUTPUT TO PROGRAMMABLE CONTROLLER		SOLENOID OR CLUTCH
	FLOAT SWITCH		THERMAL OVERLOAD
	PARSHALL FLUME		A-C SURGE PROTECTOR
	MIXER		HORN
	SEAL		FIELD LOCATED
	OFF PAGE CONNECTOR		TERMINAL POINT
	PROCESS MACHINERY MOTOR		TERMINAL POINT ARROW
	VENTURI OR INSERT FLOW TUBE		LOW VOLTAGE FUSE
	IN-LINE FLOW ELEMENT (PROPELLER TYPE)		CIRCUIT BREAKER WITH STAB CONNECTION
	IN-LINE FLOW ELEMENT (MAGNETIC TYPE)		TWO COIL LATCHING RELAY
	IN-LINE FLOW ELEMENT (ULTRA SONIC)		RECEPTACLE
	FLOW ORIFICE		SELECTOR SWITCH OPERATOR WITH FUNCTION SHOWN
	TURBIDIMETER		MAINTAINED PUSH-PULL OPERATOR
	ROTAMETER		MAINTAINED STOP-START PUSHBUTTON OPERATOR
	PUMP		CONTROL POWER TRANSFORMER
	BLOWER		DIODE RECTIFIER OR D-C SURGE PROTECTOR
	GENERAL USE DISCONNECTING SWITCH		LIMIT SWITCH - NORMALLY OPEN
	TIMED CLOSED CONTACT ON ENERGIZATION		LIMIT SWITCH - NORMALLY OPEN - HELD CLOSED
	TIMED OPEN CONTACT ON ENERGIZATION		LIMIT SWITCH - NORMALLY CLOSED - HELD OPEN
	TIMED OPEN CONTACT ON DE-ENERGIZATION		LIMIT SWITCH - NORMALLY CLOSED
	TIMED CLOSED CONTACT ON DE-ENERGIZATION		CURRENT / PNEUMATIC CONVERTER
	FLOAT ACTUATED SWITCH-NO		
	FLOAT ACTUATED SWITCH-NC		
	PRESSURE ACTUATED SWITCH-NC		
	PRESSURE ACTUATED SWITCH-NO		
	FLOW ACTUATED SWITCH-NO		
	FLOW ACTUATED SWITCH-NC		
	TEMPERATURE SWITCH-NO		

GRAPHIC SYMBOLS FOR VALVES	
	STROKE OR POSITION ACTUATOR CYLINDER (OPEN-SHUT)
	STROKE OR POSITION ACTUATOR CYLINDER (THROTTLING)
	PNEUMATIC OPERATED (OPEN-SHUT)
	PNEUMATIC OPERATED (THROTTLING)
	MOTOR OPERATED (THROTTLING)
	MOTOR OPERATED (OPEN-SHUT)
	SLIDE-STOP GATE
	SLUICE GATE
	AIR SET ASSEMBLY
	BALL VALVE
	GLOBE VALVE
	GATE VALVE OR KNIFE GATE
	CHECK VALVE
	PLUG VALVE
	BUTTERFLY VALVE, DAMPER OR LOUVER
	PRESSURE REDUCING VALVE
	TWO-WAY SOLENOID VALVE OPERATOR
	ELECTRONICALLY CONTROLLED CHECK VALVE
	TWO-WAY SOLENOID VALVE OPERATOR-DETTENTED
	THREE-WAY SOLENOID VALVE OPERATOR
	FOUR-WAY SOLENOID VALVE OPERATOR
	PIPE REDUCER (CONCENTRIC)
	PIPE REDUCER (ECCENTRIC)
	STATIC MIXER
	FLEXIBLE CONNECTOR

INSTRUMENTATION LINE SYMBOLS	
	ELECTRICAL SIGNAL
	AIR LINE
	HYDRAULIC SIGNAL
	ELECTROMAGNETIC OR SONIC SIGNAL
	SOFTWARE SIGNAL
	CONNECTION TO PROCESS, OR MECHANICAL LINK
	ETHERNET CABLE (CAT 5E)
	FIBER OPTIC CABLE

PIPING ABBREVIATIONS			
INSULATION - CC		TRACING - DD	
IH	HOT INSULATION	ET	ELECTRIC TRACING
IC	COLD INSULATION	ST	STEAM TRACING
PP	PERSONNEL PROTECTION	WT	WATER TRACING
FP	FREEZE PROTECTION	XJ	JACKETED, DENOTE TYPE
X	NO INSULATION		

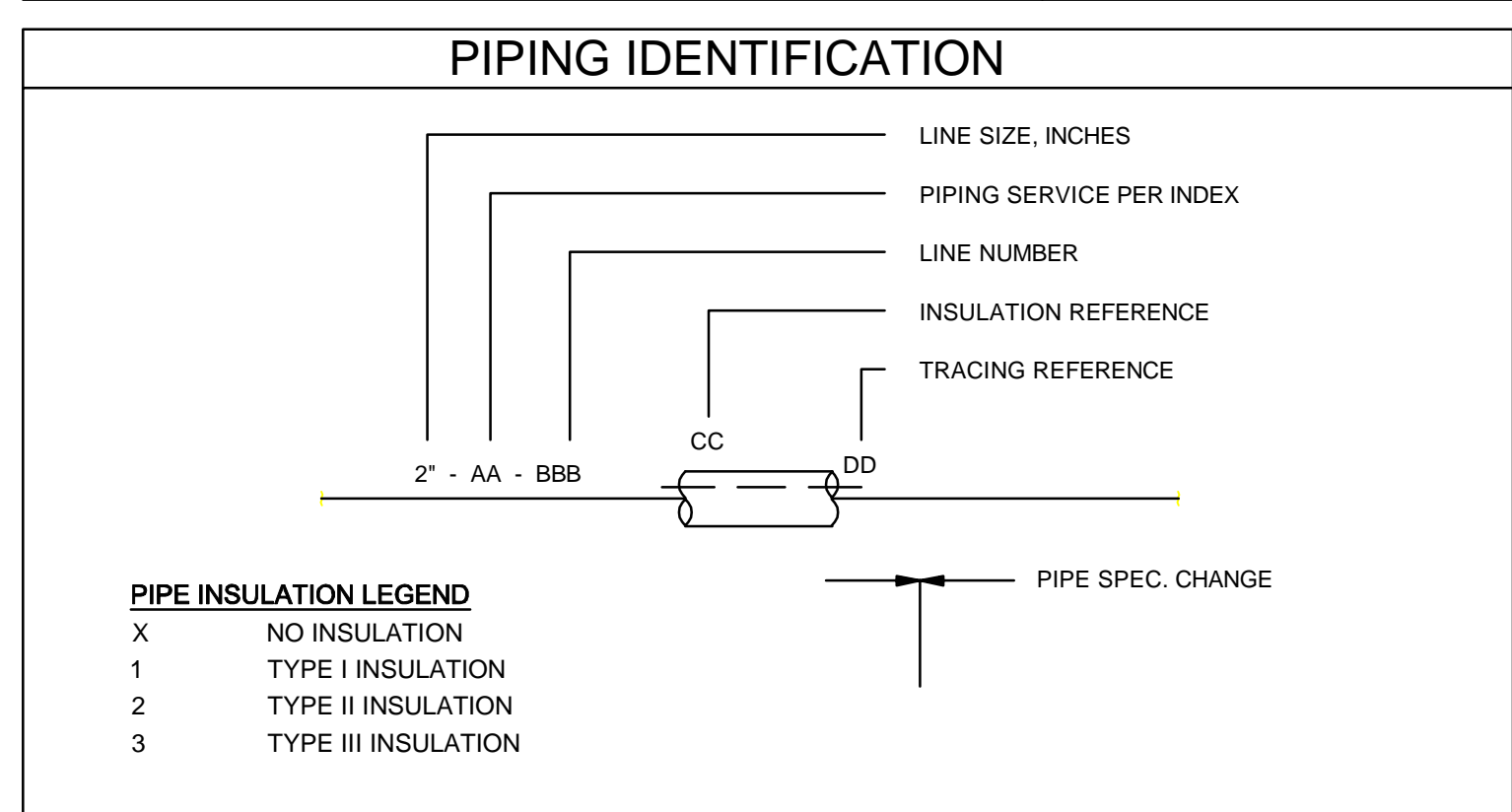
PIPE MATERIAL LEGEND - AAAA	
CPVC	CHLORINATED POLYVINYL CHLORIDE
CS	CARBON STEEL
CU	COPPER
CUT	COPPER TUBING
HDPE	HIGH-DENSITY POLYETHYLENE
HOSE	RUBBER HOSE
HTH	HIGH TEMPERATURE HOSE
GS	GALVANIZED STEEL
PRID	PVC COATED RIGID CONDUIT
PT	PLASTIC TUBING (NYLON / TYGON TUBING)
PVC	POLYVINYL CHLORIDE
RID	RIGID CONDUIT
SS04	STAINLESS STEEL, 304
SS16	STAINLESS STEEL, 316

PIPE FLUID LEGEND - BBBB	
AP5	AP-5 SOLUTION
CA	COMPRESSED AIR OR CONTROL AIR
CEN	CENTRATE
DECANT	DECANT WATER
FUEL2	#2 FUEL OIL OR DIESEL
SLMW	STABILIZED LAKE MEAD WATER, NON-POTABLE
SLMW/CEN	STABILIZED LAKE MEAD WATER OR CENTRATE
SLMW/P	STABILIZED LAKE MEAD WATER, POTABLE
SOLIDS	SOLIDS/WATER MIXTURE
TEPID	TEPID STABILIZED LAKE MEAD WATER (60-100 F)

I.S.A. STANDARD LETTER FUNCTIONS		
SYMBOL	FIRST LETTER	SUCEEDING LETTERS
A	ANALYSIS , ANALOG	ALARM
B	BURNER , FLAME	BATCH, BUTTON
C	CONDUCTIVITY , COMMAND	CONTROL (FEEDBACK TYPE)
D	DENSITY , SPECIFIC GRAVITY	
E	VOLTAGE	PRIMARY ELEMENT
F	FLOW RATE	RATIO
G	GAGING	GLASS
H	HAND , MANUAL	HIGH
I	CURRENT	INDICATE
J	POWER	SCAN
K	TIME , TIME SCHEDULE	CONTROL (NO FEEDBACK)
L	LEVEL , LIGHT	LOW
M	MOISTURE , HUMIDITY	MIDDLE , MODULATE
N		
O	OVERLOAD	ORIFICE
P	PRESSURE , VACUUM, PUSH	POINT
Q	QUANTITY	TOTALIZE , INTEGRATE
R	RADIOACTIVITY	RECORD , PRINT , RECEIVE
S	SPEED , FREQUENCY , SOLENOID	SWITCH
T	TEMPERATURE , TURBIDITY	TRANSMIT , TRANSFORM
U	MULTIVARIABLE	MULTIFUNCTION
V	VIBRATION , VISCOSITY	VALVE , DAMPER , LOUVER
W	WEIGHT , FORCE	
X		
Y	EVENT, STATE, PRESENCE	RELAY , COMPUTE
Z	POSITION	DRIVE , ACTUATE

INSTRUMENT DESIGNATIONS	SAMPLE
AHC - AUTO / HOLD / CLOSE AM - AUTO / MANUAL DEV - DEVIATION HOA - HAND / OFF / AUTO HOR - HAND / OFF / REMOTE LOR - LOCAL / OFF / REMOTE LOS - LOCKOUT STOP LR - LOCAL / REMOTE MOA - MANUAL / OFF / AUTO OO - ON / OFF OCA - OPEN / CLOSE / AUTO	OSC - OPEN / STOP / CLOSE POT - POTENTIOMETER RL - RAISE / LOWER RSL - RAISE / STOP / LOWER RST - RESET SD - SHUTDOWN SEL - SELECT SP - SETPOINT SS - START / STOP STR - START STP - STOP

ANALYTICAL	SAMPLE
AE - ALKALINITY CL2 - CHLORINE CONCENTRATION COM - COMBUSTIBLE GAS CON - CONDUCTIVITY DO - DISSOLVED OXYGEN H2S - HYDROGEN SULFIDE LEL - LOWER EXPLOSIVE LIMIT O2 - OXYGEN CONCENTRATION O3 - OZONE	ORP - OXYGEN / REDUCTION POTENTIAL PH - HYDROGEN ION CONCENTRATION SO2 - SULFUR DIOXIDE TH - TOTAL HARDNESS TURB - TURBIDITY UV - ULTRAVIOLET



PIPE INSULATION LEGEND	
X	NO INSULATION
1	TYPE I INSULATION
2	TYPE II INSULATION
3	TYPE III INSULATION

David A. Burger, P.E.
PE No. 024026, NV
EX. No. 12312016
1489 West Warm Springs Road,
Henderson, NV 89014

TETRA TECH

www.tetratech.com
1489 West Warm Springs Road, Suite 110
Henderson, NV 89014
Phone: 702.946.6700 Fax: 702.987.7140

DATE _____

BY	DESCRIPTION	DATE	MARK
DAB	CWP-05: ISSUED FOR NDEFP REVIEW	8/3/16	1

NEVADA ENVIRONMENTAL RESPONSE TRUST
HENDERSON, NEVADA

AP-5 POND PHASE II
PROJECT IMPLEMENTATION

**INSTRUMENTATION
LEGEND**

Copyright: Tetra Tech

Project No.: 200-01299-16002

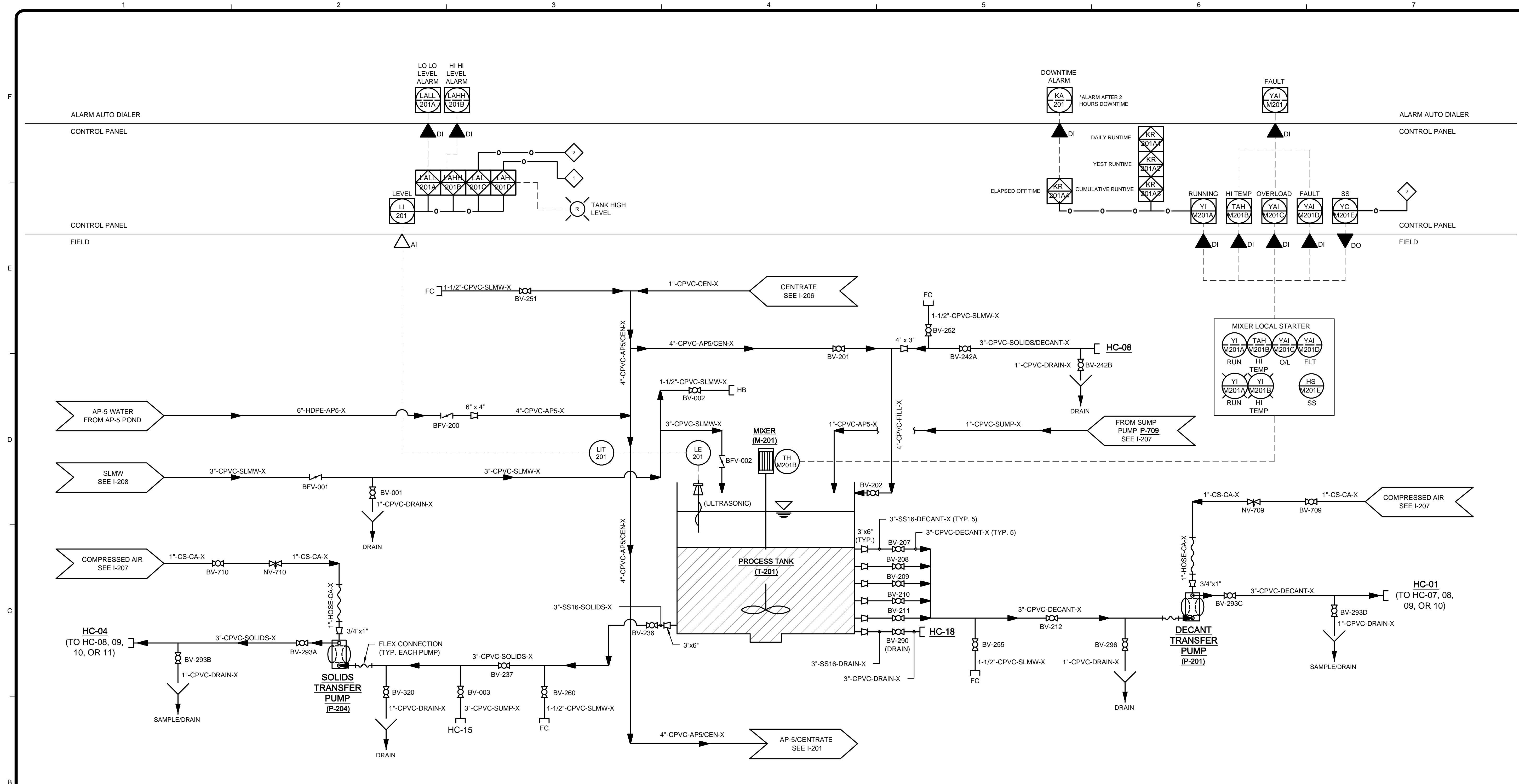
Designed By: J. COWARD

Drawn By: T. CALZARETTA

Checked By: D. BURGER

I-001

8/3/2016 4:38:34 PM - P:\NER\072939200-07293-16002\CAD\SHEETFILES\I-200 - PID.DWG - PRATT, BRADFORD



EQUIPMENT ID	P-201	P-204	T-201	M-201	LIT-201				
DESCRIPTION	DECANT TRANSFER PUMP	SOLIDS TRANSFER PUMP	PROCESS TANK	TANK MIXER	PROCESS TANK LEVEL				
TYPE	AIR DIAPHRAGM PUMP	AIR DIAPHRAGM PUMP	FLAT BOTTOM	PROPELLER	ULTRASONIC				
MANUFACTURER	WILDEN	WILDEN	RMF	LOTUS MIXERS	ENDRESS + HAUSER				
SIZE	3"	3"	600,000 GAL	40 HP	-				
FLOW RANGE	0-200 GPM	0-200 GPM	-	-	-				
LEVEL RANGE	-	-	0-34 FEET	-	0-28 FEET				
POWER REQUIRMENTS	AIR OPERATED	AIR OPERATED	-	480VAC, 3φ, 52A FLA	LOOP POWERED				
ANALYZER RANGE	-	-	-	-	-				
WETTED MATERIAL	PVDF	PVDF	316 SS	316 SS	PVDF				
ELEVATION	-	-	-	-	-				
LOCAL CONTROLS / INDICATION	YES	YES	-	YES	YES				
MOUNTING	-	-	-	-	FLANGE, 4"D STILLING WELL				
CONTROL TYPE	ON-OFF, MANUAL	ON-OFF, MANUAL	-	ON-OFF	-				
NOTES	FURNISHED BY TETRA TECH	FURNISHED BY TETRA TECH	INSTALLED IN CWP-01	INSTALLED IN CWP-01	MODEL: PROSONIC FMU44				

TETRA TECH

www.tetra.tech.com
1489 West Warm Springs Road, Suite 110
Henderson, NV 89014
Phone: 702.946.6700 Fax: 702.997.7140

David A. Burger, P.E.
PE No. 024026, NV
EX No. 12312016
1489 West Warm Springs Road, Suite 110
Henderson, NV 89014

DATE _____

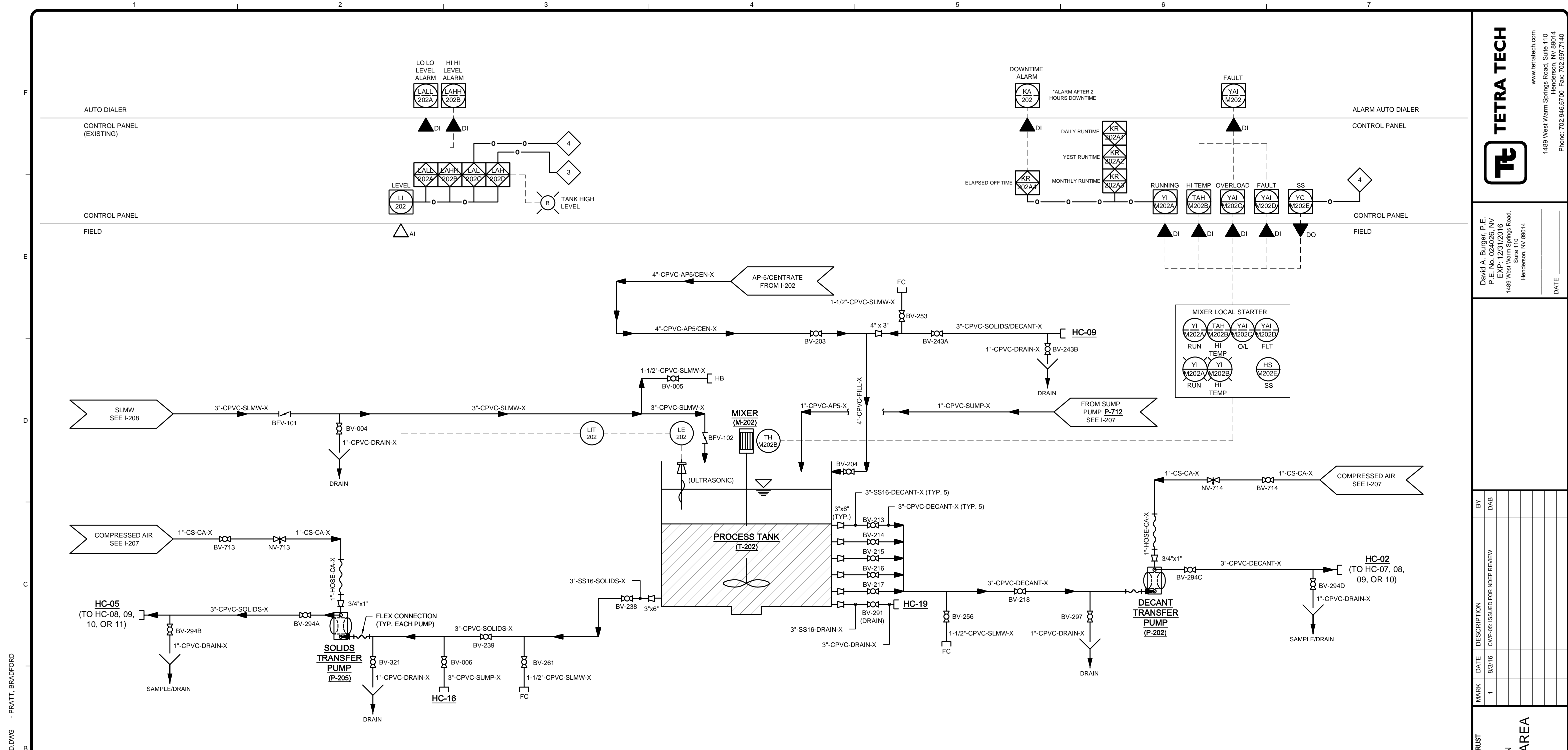
MARK	DATE	DESCRIPTION	BY
1	8/3/16	CWP-05 ISSUED FOR NDEP REVIEW	DAB

NEVADA ENVIRONMENTAL RESPONSE TRUST
HENDERSON, NEVADA
PROJECT IMPLEMENTATION
TANK CONTAINMENT AREA
TANK T-201
P&ID

Project No.: 200-01299-16002
Designed By: J. COWARD
Drawn By: T. CALZARETTA
Checked By: D. BURGER

I-200

Copyright: Tetra Tech



EQUIPMENT ID	P-202	P-205	T-202	M-202	LIT-202				
DESCRIPTION	DECANT TRANSFER PUMP	SOLIDS TRANSFER PUMP	PROCESS TANK	TANK MIXER	PROCESS TANK LEVEL				
TYPE	AIR DIAPHRAGM PUMP	AIR DIAPHRAGM PUMP	FLAT BOTTOM	PROPELLER	ULTRASONIC				
MANUFACTURER	WILDEN	WILDEN	RMF	LOTUS MIXER	ENDRESS + HAUSER				
SIZE	3"	3"	600,000 GAL	40 HP	-				
FLOW RANGE	0-200 GPM	0-200 GPM	-	-	-				
LEVEL RANGE	-	-	0-34 FEET	-	0-28 FEET				
POWER REQUIRMENTS	AIR OPERATED	AIR OPERATED	-	480VAC, 3φ, 52A FLA	LOOP POWERED				
ANALYZER RANGE	-	-	-	-	-				
WETTED MATERIAL	PVDF	PVDF	316SS	316SS	PVDF				
ELEVATION	-	-	-	-	-				
LOCAL CONTROLS / INDICATION	YES	YES	-	YES	YES				
MOUNTING	-	-	-	-	FLANGE, 4"D STILLING WELL				
CONTROL TYPE	ON-OFF, MANUAL	ON-OFF, MANUAL	-	ON-OFF	-				
NOTES	FURNISHED BY TETRA TECH	FURNISHED BY TETRA TECH	INSTALLED IN CWP-01	INSTALLED IN CWP-01	MODEL: PROSONIC FMU44				

TETRA TECH
 www.tetra-tech.com
 1489 West Warm Springs Road, Suite 110
 Henderson, NV 89014
 Phone: 702.946.6700 Fax: 702.987.7140

David A. Burger, P.E.
 PE No. 024026, NV
 EX No. 12312016
 1489 West Warm Springs Road, Suite 110
 Henderson, NV 89014

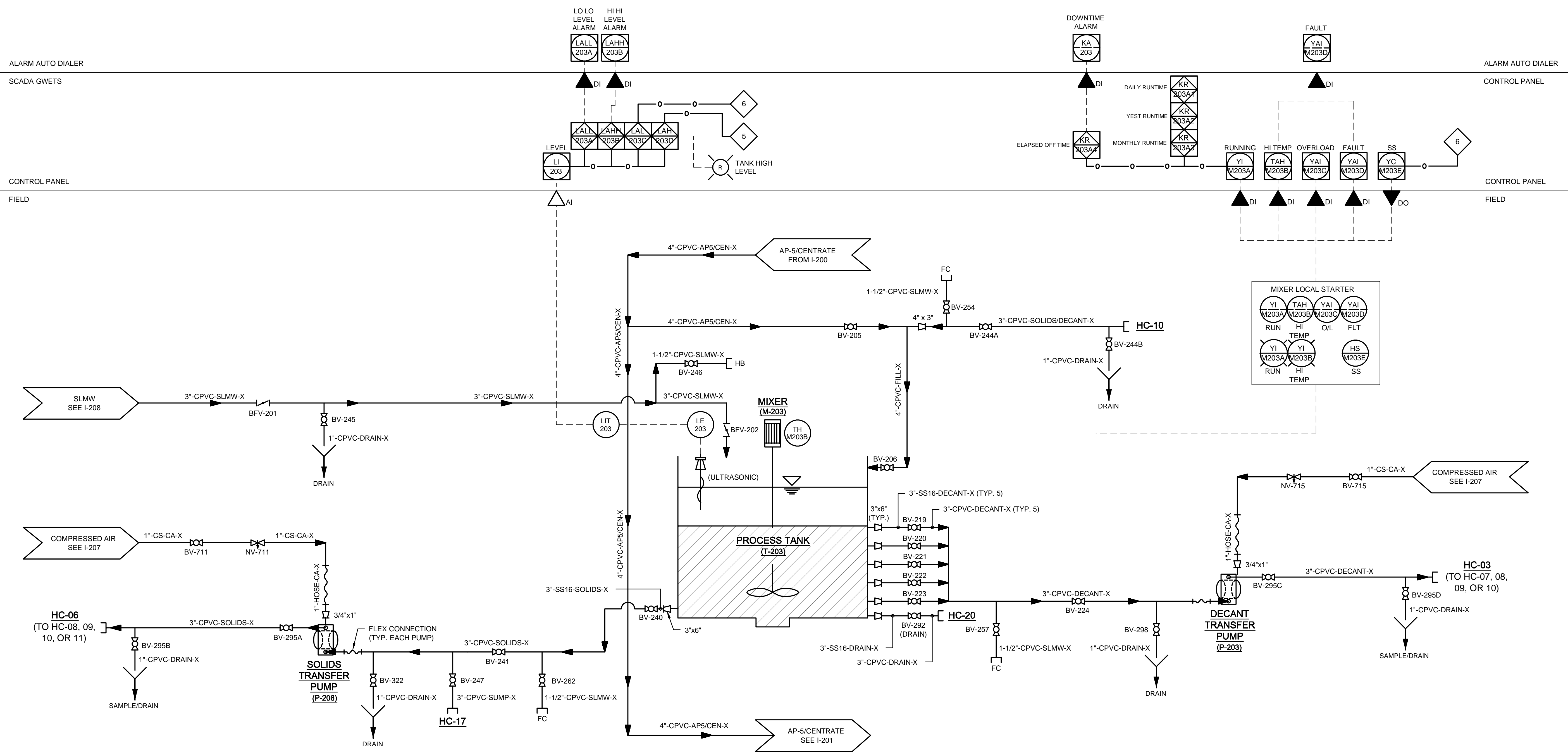
MARK	DATE	DESCRIPTION	BY
1	8/3/16	CWP-05 ISSUED FOR NDEFP REVIEW	DAB

NEVADA ENVIRONMENTAL RESPONSE TRUST
 HENDERSON, NEVADA
 Project No.: 200-01299-16002
 AP-5 POND PHASE II
 PROJECT IMPLEMENTATION
TANK T-202
P&ID
 Design By: J. COWARD
 Drawn By: T. CALZARETTA
 Checked By: D. BURGER

I-201

8/3/2016 4:40:05 PM - P:\NER\072939\200-01299-16002\CAD\SHEETFILES\I-201 - PID.DWG - PRATT, BRADFORD

8/3/2016 4:41:06 PM - P:\NER\072939200-072939-16002\CAD\SHEETFILES\I-202 - PID.DWG - PRATT, BRADFORD



EQUIPMENT ID	P-203	P-206	T-203	M-203	LIT-203	PCV-711, PCV-715			
DESCRIPTION	DECANT TRANSFER PUMP	SOLIDS TRANSFER PUMP	PROCESS TANK	TANK MIXER	PROCESS TANK LEVEL	PRESSURE REGULATOR			
TYPE	AIR DIAPHRAGM PUMP	AIR DIAPHRAGM PUMP	FLAT BOTTOM	PROPELLER	ULTRASONIC	-			
MANUFACTURER	WILDEN	WILDEN	RMF	LOTUS MIXER	ENDRESS + HAUSER	WILKERSON			
SIZE	3"	3"	600,000 GAL	40 HP	-	1"			
FLOW RANGE	0-200 GPM	0-200 GPM	-	-	-	0-500 CFM			
LEVEL RANGE	-	-	0-34 FEET	-	0-28 FEET	-			
POWER REQUIRMENTS	AIR OPERATED	AIR OPERATED	-	480VAC, 3φ, 52A FLA	LOOP POWERED	-			
ANALYZER RANGE	-	-	-	-	-	-			
WETTED MATERIAL	PVDF	PVDF	316 SS	316 SS	PVDF	ZINC			
ELEVATION	-	-	-	-	-	-			
LOCAL CONTROLS / INDICATION	YES	YES	-	YES	YES	-			
MOUNTING	-	-	-	-	FLANGE, 4"D STILLING WELL	NPT			
CONTROL TYPE	ON-OFF, MANUAL	ON-OFF, MANUAL	-	ON-OFF	-	SELF			
NOTES	FURNISHED BY TETRA TECH	FURNISHED BY TETRA TECH	INSTALLED IN CWP-01	INSTALLED IN CWP-01	MODEL: PROSONIC FMU44	MODEL: R30			

TETRA TECH
 www.tetra-tech.com
 1489 West Warm Springs Road, Suite 110
 Henderson, NV 89014
 Phone: 702.946.6700 Fax: 702.987.7140

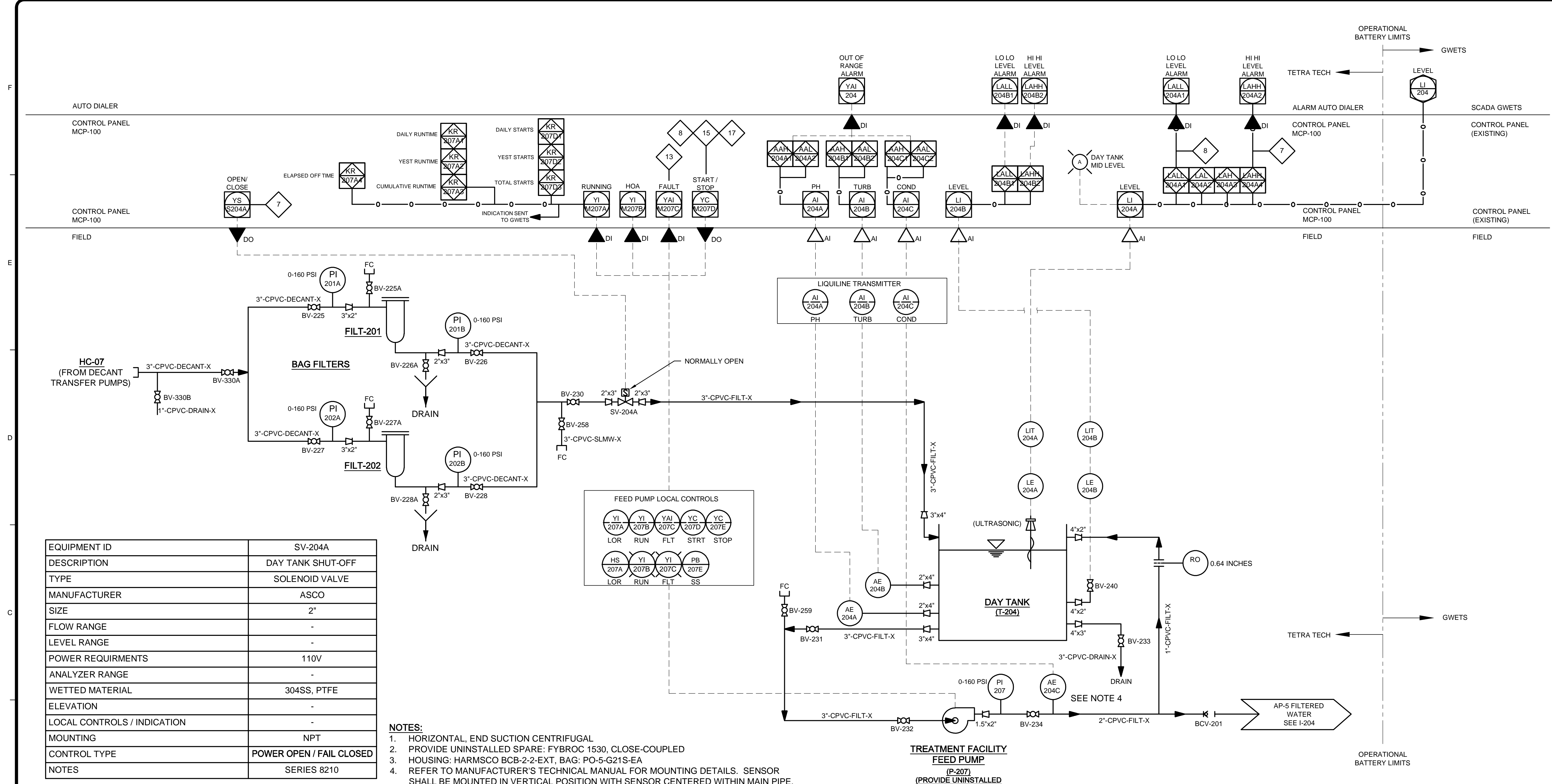
David A. Burger, P.E.
 PE No. 024026, NV
 EX. No. 12312016
 1489 West Warm Springs Road, Suite 110
 Henderson, NV 89014

MARK	DATE	DESCRIPTION	BY
1	8/3/16	CWP-05 ISSUED FOR NDEFP REVIEW	DAB

NEVADA ENVIRONMENTAL RESPONSE TRUST
 HENDERSON, NEVADA
 Project No.: 200-01299-16002
 AP-5 POND PHASE II
 PROJECT IMPLEMENTATION
TANK CONTAINMENT AREA
TANK T-203
P&ID
 Designated By: J. COWARD
 Drawn By: T. CALZARETTA
 Checked By: D. BURGER

I-202

8/3/2016 4:42:31 PM - P:\N\ER\07299\200-07299-16002\CAD\SHETS\TILES\203 - PID.DWG - PRATT, BRADFORD



EQUIPMENT ID	SV-204A
DESCRIPTION	DAY TANK SHUT-OFF
TYPE	SOLENOID VALVE
MANUFACTURER	ASCO
SIZE	2"
FLOW RANGE	-
LEVEL RANGE	-
POWER REQUIREMENTS	110V
ANALYZER RANGE	-
WETTED MATERIAL	304SS, PTFE
ELEVATION	-
LOCAL CONTROLS / INDICATION	-
MOUNTING	NPT
CONTROL TYPE	POWER OPEN / FAIL CLOSED
NOTES	SERIES 8210

- NOTES:**
- HORIZONTAL, END SUCTION CENTRIFUGAL
 - PROVIDE UNINSTALLED SPARE: FYBROC 1530, CLOSE-COUPLED
 - HOUSING: HARMSCO BCB-2-2-EXT, BAG: PO-5-G21S-EA
 - REFER TO MANUFACTURER'S TECHNICAL MANUAL FOR MOUNTING DETAILS. SENSOR SHALL BE MOUNTED IN VERTICAL POSITION WITH SENSOR CENTERED WITHIN MAIN PIPE.

EQUIPMENT ID	P-207	T-204	LIT-204A	LIT-204B	AIT-204	AE-204A	AE-204B	AE-204C	PI-207, PI-201A/B, PI-202A/B	FILT-201, FILT-202
DESCRIPTION	TREATMENT FACILITY FEED PUMP	DAY TANK	DAY TANK LEVEL	DAY TANK LEVEL	ANALYTICAL TRANSMITTER	PH ELEMENT	TURBIDITY ELEMENT	CONDUCTIVITY ELEMENT	PRESSURE INDICATOR	BAG FILTERS
TYPE	SEE NOTE 1	FLAT BOTTOM	ULTRASONIC	HYDROSTATIC	LIQUILINE	GLASS ELECTRODE	PULSED LIGHT	LIQUILINE	-	SIMPLEX
MANUFACTURER	FYBROC	AUGUSTA FIBERGLASS	ENDRESS + HAUSER	ENDRESS + HAUSER	ENDRESS + HAUSER	ENDRESS + HAUSER	ENDRESS + HAUSER	ENDRESS + HAUSER	-	HARMSCO
SIZE	1 x 1.5 x 8	30,000 GAL	-	2"	-	-	-	-	-	3"
FLOW RANGE	0-50 GPM	-	-	-	-	-	-	-	-	0-400 GPM
LEVEL RANGE	-	0-32 FEET	0-32 FEET	0-32 FEET	-	-	-	-	-	-
POWER REQUIREMENTS	480VAC, 3φ	-	LOOP POWERED	LOOP POWERED	120 VAC	POWERED BY AIT-204	POWERED BY AIT-204	POWERED BY AIT-204	-	24VDC
ANALYZER RANGE	-	-	-	-	-	0-14 PH	0-4000 FNU	10 μS/cm - 20 mS/cm	-	-
WETTED MATERIAL	FRP	FRP	PVDF	CERAMIC DIAPHRAGM	-	GLASS / PTFE	SAPPHIRE / SST / EPDM	SS (AISI 316L)	-	316 SS
ELEVATION	-	-	-	-	-	-	-	-	-	-
LOCAL CONTROLS / INDICATION	YES	-	YES	YES	YES	NO	NO	YES	-	NO
MOUNTING	-	-	FLANGE, 4"D STILLING WELL	FLANGE	PANEL	CLEANFIT, 2" SS FLANGE	CLEANFIT, 2" SS FLANGE	2" FLANGE	-	-
CONTROL TYPE	ON-OFF, AUTO	-	4-20MA	4-20MA	4-20MA	-	-	-	-	FLANGE
NOTES	SEE NOTE 2	-	MODEL: PROSONIC FMU44	MODEL: CERABAR M PMC51	MODEL: CM444R (4 CHANNEL)	MODEL: CPS11	MODEL: CUS51D	MODEL: CLS50D	-	SEE NOTE 3

TETRA TECH

www.tetrattech.com
1489 West Warm Springs Road, Suite 110
Henderson, NV 89014
Phone: 702.946.6700 Fax: 702.997.7140

David A. Burger, P.E.
PE No. 024026, NV
EX. No. 12312016
1489 West Warm Springs Road,
Suite 110
Henderson, NV 89014

DATE _____

MARK	DATE	DESCRIPTION	BY
1	8/3/16	CWP-05: ISSUED FOR NDEFP REVIEW	DAB

NEVADA ENVIRONMENTAL RESPONSE TRUST
HENDERSON, NEVADA

AP-5 POND PHASE II
PROJECT IMPLEMENTATION

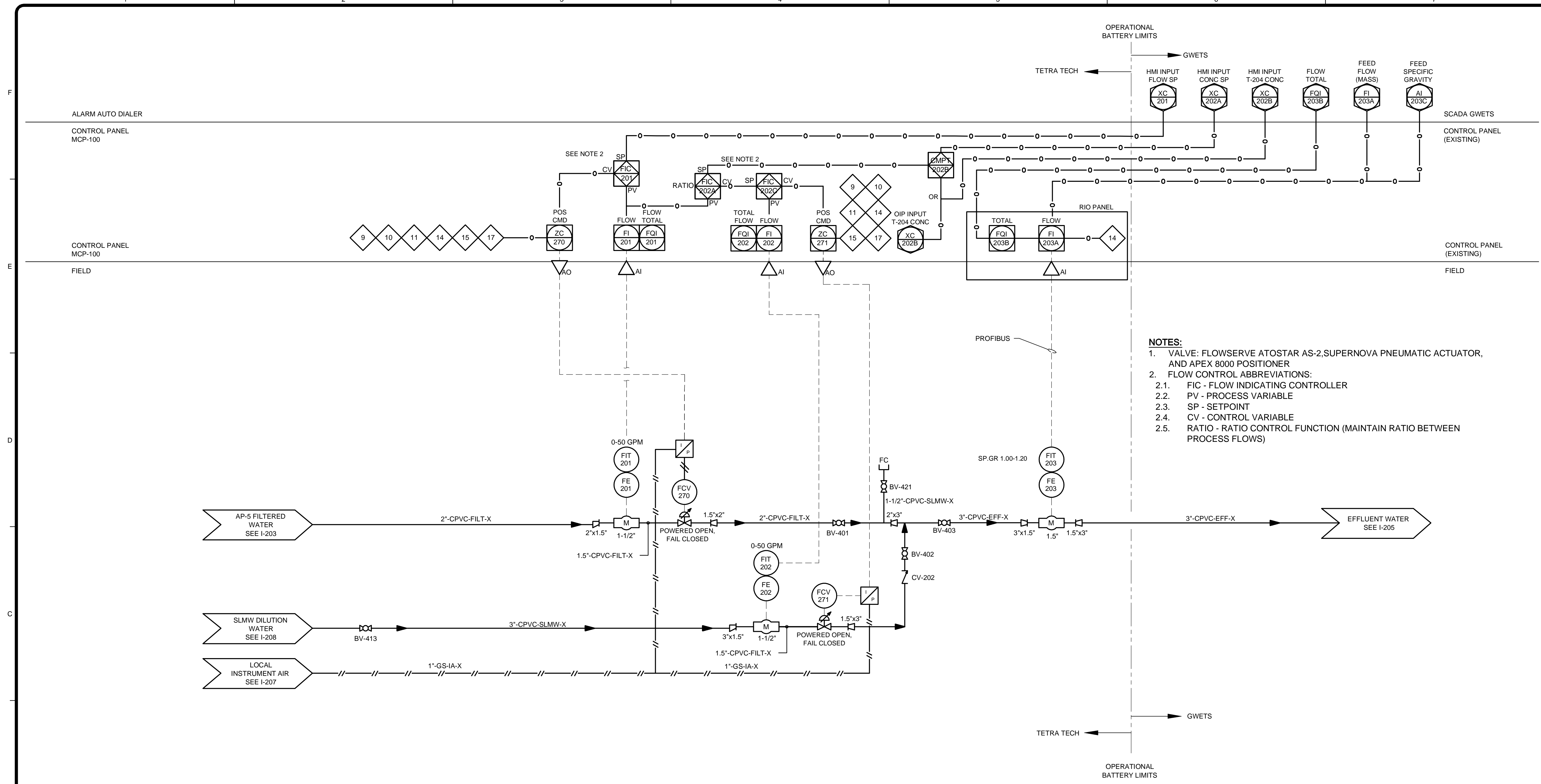
**TRANSFER SYSTEM
TREATMENT FACILITY
P&ID**

Project No.: 200-01299-16002
Designed By: J. COWARD
Drawn By: T. CALZARETTA
Checked By: D. BURGER

I-203

Copyright: Tetra Tech

8/3/2016 4:43:41 PM - P:\NER\072939\200-01299-16002\CAD\SHEETFILES\I-204 - PID.DWG - PRATT, BRADFORD



- NOTES:**
1. VALVE: FLOWSERVE ATOSTAR AS-2, SUPERNOVA PNEUMATIC ACTUATOR, AND APEX 8000 POSITIONER
 2. FLOW CONTROL ABBREVIATIONS:
 - 2.1. FIC - FLOW INDICATING CONTROLLER
 - 2.2. PV - PROCESS VARIABLE
 - 2.3. SP - SETPOINT
 - 2.4. CV - CONTROL VARIABLE
 - 2.5. RATIO - RATIO CONTROL FUNCTION (MAINTAIN RATIO BETWEEN PROCESS FLOWS)

EQUIPMENT ID	FCV-270	FCV-271	FIT-201, FIT-202	FIT-203	BFP-401				
DESCRIPTION	DAY TANK CV	SLMW DILUTION CV	FLOW RATE	FLOW RATE	BACKFLOW PREVENTOR				
TYPE	V-PORT BALL VALVE	V-PORT BALL VALVE	ELECTROMAGNETIC	CORIOLIS	RPZ				
MANUFACTURER	FLOWSERVE	FLOWSERVE	ROSEMOUNT	ROSEMOUNT	WATTS				
SIZE	1-1/2"	1-1/2"	1-1/2"	1.5"	3"				
FLOW RANGE	-	-	-	-	170 GPM				
LEVEL RANGE	-	-	-	-	-				
POWER REQUIRMENTS	120VAC	120VAC	120VAC	120VAC	-				
ANALYZER RANGE	-	-	-	-	-				
WETTED MATERIAL	SS	SS	-	-	-				
ELEVATION	-	-	-	-	-				
LOCAL CONTROLS / INDICATION	POSITION INDICATION	POSITION INDICATION	YES	YES	-				
MOUNTING	FLANGE	FLANGE	FLANGE	FLANGE	FLANGE				
CONTROL TYPE	PNEUMATIC ACTUATOR	PNEUMATIC ACTUATOR	4-20 MA	PROFIBUS COMM	-				
NOTES	SEE NOTE 1	SEE NOTE 1	MODEL: 8705TSA015C1M0N5B3	MODEL: CMF150M418N2BMEZZZ	MODEL: LF909				

David A. Burger, P.E.
 PE No. 024026, NV
 EX. No. 12312016
 1489 West Warm Springs Road, Suite 110
 Henderson, NV 89014

TETRA TECH

www.tetrattech.com
 1489 West Warm Springs Road, Suite 110
 Henderson, NV 89014
 Phone: 702.946.6700 Fax: 702.997.7140

DATE _____

DATE _____

MARK	DATE	DESCRIPTION	BY
1	8/3/16	CWP-05: ISSUED FOR NDEP REVIEW	DAB

NEVADA ENVIRONMENTAL RESPONSE TRUST
 HENDERSON, NEVADA

AP-5 POND PHASE II
 PROJECT IMPLEMENTATION
**TRANSFER SYSTEM
 RECEIVING TANK T-205**
 P&ID

Copyright: Tetra Tech

Project No.: 200-01299-16002

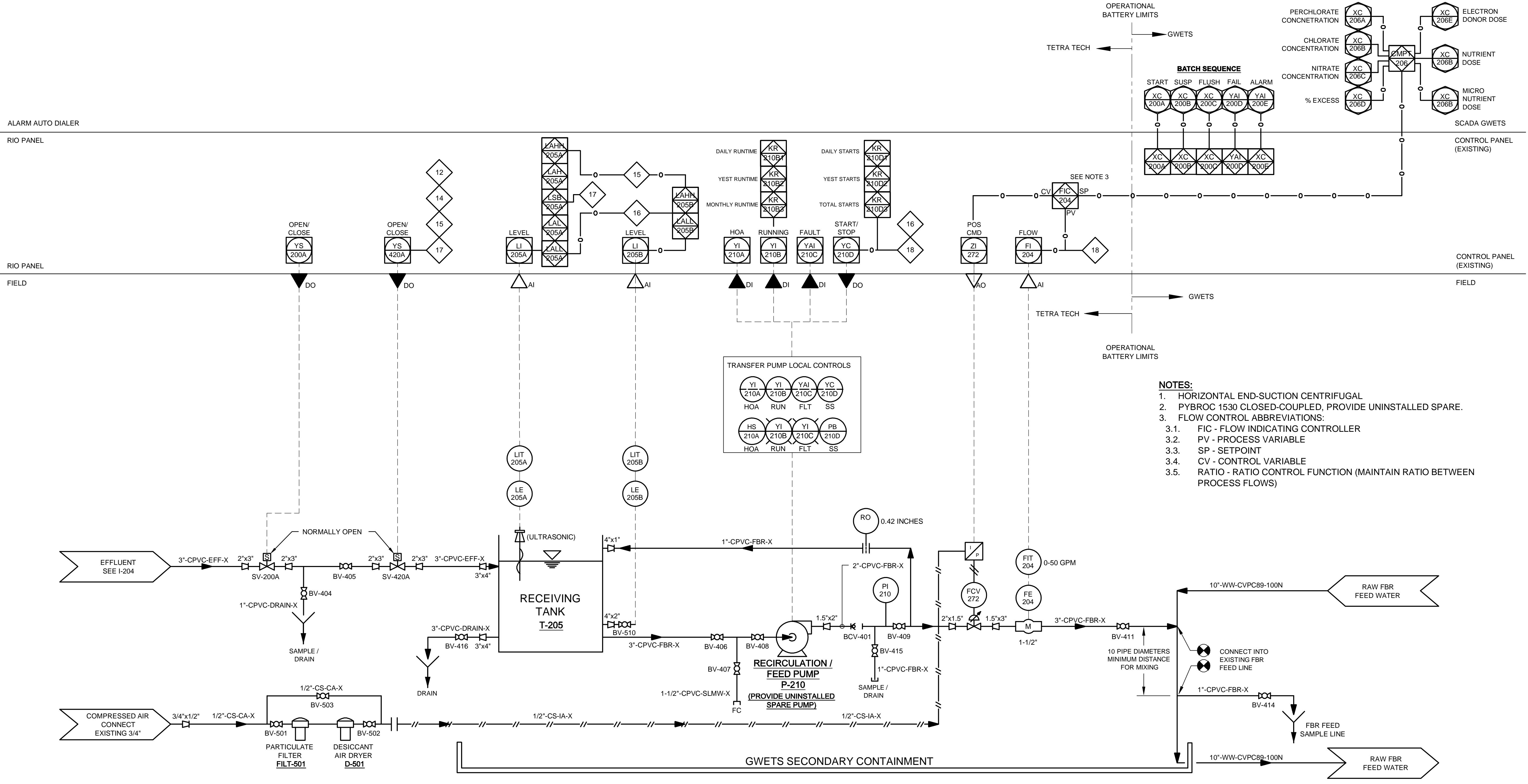
Designed By: J. COWARD

Drawn By: T. CALZARETTA

Checked By: D. BURGER

I-204

8/3/2016 4:45:22 PM - P:\NER\072939200-072939-16002\CAD\SHETS\I-205 - PID.DWG - PRATT, BRADFORD



- NOTES:**
- HORIZONTAL END-SUCTION CENTRIFUGAL
 - PYBROC 1530 CLOSED-COUPLED, PROVIDE UNINSTALLED SPARE.
 - FLOW CONTROL ABBREVIATIONS:
 - FIC - FLOW INDICATING CONTROLLER
 - PV - PROCESS VARIABLE
 - SP - SETPOINT
 - CV - CONTROL VARIABLE
 - RATIO - RATIO CONTROL FUNCTION (MAINTAIN RATIO BETWEEN PROCESS FLOWS)

EQUIPMENT ID	P-210	T-205	FCV-272	LIT-205A	FIT-204	LIT-205B	SV-200A	SV-420A	D-501	FILT-501
DESCRIPTION	RECIRCULATION/FEED PUMP	RECEIVING TANK	SLMW DILUTION CV	RECEIVING TANK LEVEL	FLOW RATE	RECEIVING TANK LEVEL	RECEIVING TANK SHUT-OFF	RECEIVING TANK SHUT-OFF	AIR DRYER	AIR FILTER
TYPE	SEE NOTE 1	FLAT BOTTOM	V-PORT BALL VALVE	ULTRASONIC	ELECTROMAGNETIC	HYDROSTATIC	SOLENOID VALVE	SOLENOID VALVE	DESICCANT	DESICCANT
MANUFACTURER	FYBROC	AUGUSTA FIBERGLASS	FLO-TITE	ENDRESS + HAUSER	ROSEMOUNT	ENDRESS + HAUSER	ASCO	ASCO	WILKERSON	WILKERSON
SIZE	1.5 X 3 X 6	15,000 GAL	1-1/2"	-	1-1/2"	2"	2"	2"	1/2"	1/2"
FLOW RANGE	0-50 GPM	-	-	-	-	-	-	-	-	-
LEVEL RANGE	-	0 - 20 FEET	-	0-18 FEET	-	0-20 FEET	-	-	-	-
POWER REQUIRMENTS	24VDC CONTROL POWER	-	120VAC	LOOP POWERED	120VAC	LOOP POWERED	110V	110V	-	-
ANALYZER RANGE	-	-	-	-	-	-	-	-	-	-
WETTED MATERIAL	FRP	FRP	SS	PVDF	-	-	304SS, PTFE	304SS, PTFE	ZINC, ALUMINUM	ZINC, POLYPROPYLENE
ELEVATION	-	-	-	-	-	-	-	-	-	-
LOCAL CONTROLS / INDICATION	YES	-	POSITION INDICATION	YES	YES	YES	-	-	-	-
MOUNTING	-	-	FLANGE	FLANGE, 4"D STILLING WELL	FLANGE	FLANGE	NPT	NPT	NPT	NPT
CONTROL TYPE	CONSTANT SPEED	-	PNEUMATIC ACTUATOR	4-20 MA	4-20 MA	4-20 MA	POWER OPEN, FAIL CLOSED	POWER OPEN, FAIL CLOSED	-	-
NOTES	SEE NOTE 2	-	SEE NOTE 1	MODEL: PROSONIC FMU44	MODEL: 8705TSA015C1M0N5B3	MODEL: CERABAR M PMC51	MODEL: SERIES 8210	MODEL: SERIES 8210	MODEL: X25	MODEL: F16

TETRA TECH

www.tetra.tech.com
1489 West Warm Springs Road, Suite 110
Henderson, NV 89014
Phone: 702.946.6700 Fax: 702.987.7140

David A. Burger, P.E.
PE No. 024026, NV
EX. No. 12312016
1489 West Warm Springs Road, Suite 110
Henderson, NV 89014

DATE _____

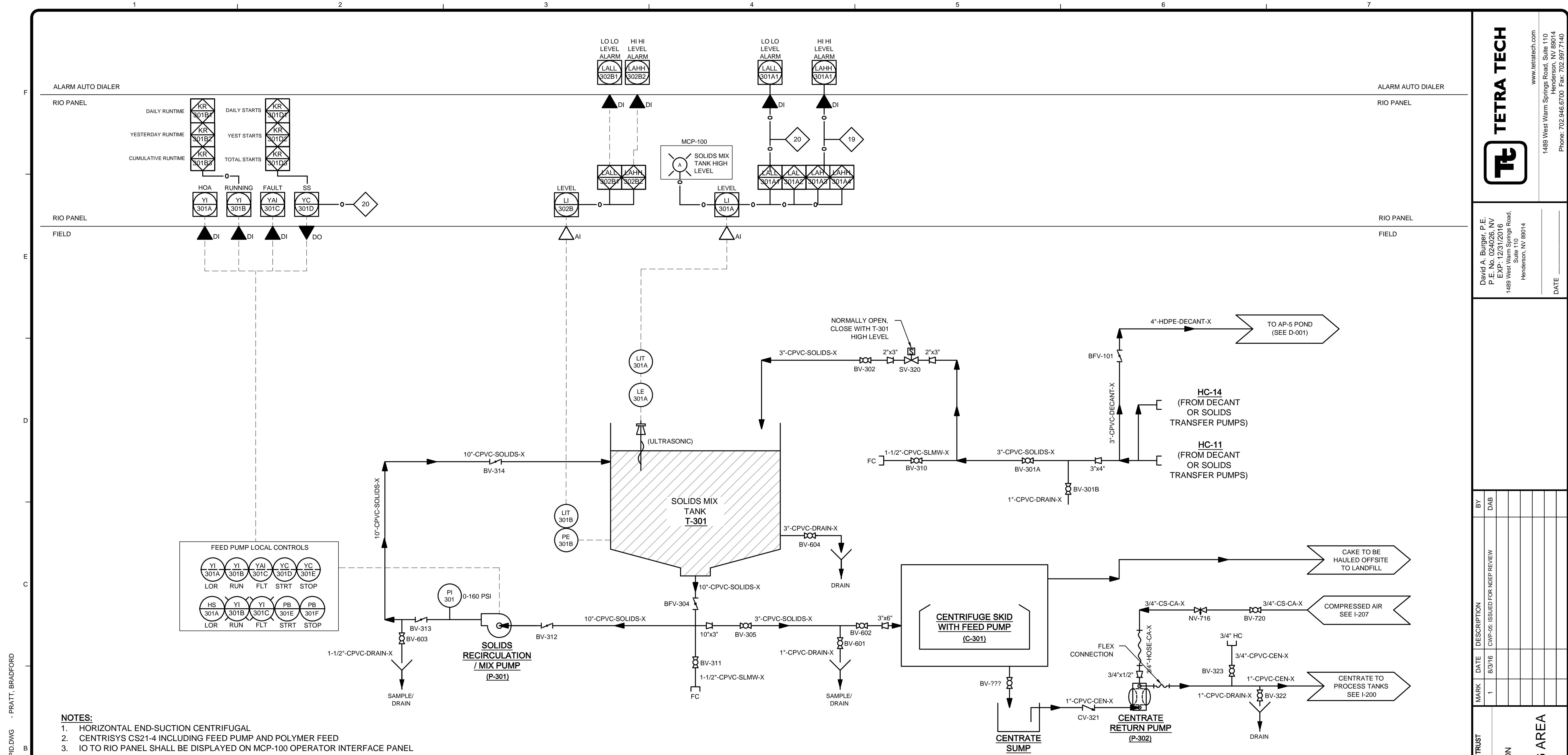
MARK	DATE	DESCRIPTION	BY
1	8/3/16	CWP-05: ISSUED FOR NDEP REVIEW	DAB

NEVADA ENVIRONMENTAL RESPONSE TRUST
HENDERSON, NEVADA
PROJECT IMPLEMENTATION
**TRANSFER SYSTEM
RECEIVING TANK T-205**
P&ID

Project No.: 200-01299-16002
Designed By: J. COWARD
Drawn By: T. CALZARETTA
Checked By: D. BURGER

I-205

Copyright: Tetra Tech



- NOTES:**
- HORIZONTAL END-SUCTION CENTRIFUGAL
 - CENTRISYS CS21-4 INCLUDING FEED PUMP AND POLYMER FEED
 - IO TO RIO PANEL SHALL BE DISPLAYED ON MCP-100 OPERATOR INTERFACE PANEL

EQUIPMENT ID	P-301	P-302	T-301	LIT-301A	LIT-301B	C-301	SV-320		
DESCRIPTION	RECIRCULATION PUMP	CENTRATE RETURN PUMP	SOLIDS MIX TANK	SOLIDS MIX TANK LEVEL	SOLIDS MIX TANK LEVEL	CENTRIFUGE SKID	SOLIDS SHUT-OFF		
TYPE	SEE NOTE 1	AIR DIAPHRAGM PUMP	CONE BOTTOM	ULTRASONIC	HYDROSTATIC	RENTAL	SOLENOID VALVE		
MANUFACTURER	NAGLE	WILDEN	AUGUSTA FIBERGLASS	ENDRESS + HAUSER	ENDRESS + HAUSER	CENTRISYS	ASCO		
SIZE	10"x10"x23"	1"	30,000 GAL	-	2"	3,000 LBS/HR	2"		
FLOW RANGE	0 - 2,400 GPM	0 - 50 GPM	-	-	-	0 - 200 GPM	-		
LEVEL RANGE	-	-	0-25 FEET	0-25 FEET	0-25 FEET	-	-		
POWER REQUIREMENTS	480 VAC, 3φ	AIR OPERATED	-	LOOP POWERED	LOOP POWERED	480 VAC, 3φ	110 VAC		
ANALYZER RANGE	-	-	-	-	-	-	-		
WETTED MATERIAL	CAST IRON, CARBON STEEL	PVDF	FRP	PVDF	CERAMIC DIAPHRAGM	-	304SS, PTFE		
ELEVATION	-	-	-	-	-	-	-		
LOCAL CONTROLS / INDICATION	ON-OFF, AUTO	YSE	-	YES	YES	YES	-		
MOUNTING	-	-	-	FLANGE, 4"D STILLING WELL	FLANGE	SKID MOUNTED	NPT		
CONTROL TYPE	-	ON-OFF, MANUAL	-	4-20MA	4-20MA	ON-OFF, MANUAL	POWER OPEN, FAIL CLOSED		
NOTES	MODEL: NAGLE FCH	FURNISHED BY TETRATECH	-	MODEL: PROSONIC FMU42	MODEL: CERABAR M PMC51	-	MODEL: SERIES 8210		

8/3/2016 4:46:35 PM - P:\I\ER\072939\200-01299-16002\CAD\SHEETFILES\I-206 - PID.DWG - PRATT, BRADFORD

TETRA TECH
 www.tetrattech.com
 1489 West Warm Springs Road, Suite 110
 Henderson, NV 89014
 Phone: 702.946.6700 Fax: 702.997.7140

David A. Burger, P.E.
 PE No. 024026, NV
 EX. No. 12312016
 1489 West Warm Springs Road, Suite 110
 Henderson, NV 89014

DATE _____

MARK	DATE	DESCRIPTION	BY
1	8/3/16	CWP-05 ISSUED FOR NDEP REVIEW	DAB

NEVADA ENVIRONMENTAL RESPONSE TRUST
 HENDERSON, NEVADA

Project No.: 200-01299-16002
 AP-5 POND PHASE II
 PROJECT IMPLEMENTATION

**SOLIDS DEWATERING AREA
 P&ID**

Designed By: J. COWARD
 Drawn By: T. CALZARETTA
 Checked By: D. BURGER

I-206

Copyright: Tetra Tech

8/3/2016 4:47:28 PM - P:\NER\072939\200-01299-16002\CAD\SHEETFILES\I-207 - PID.DWG - PRATT, BRADFORD

ALARM AUTO DIALER

CONTROL PANEL
MCP-100

CONTROL PANEL
MCP-100

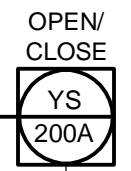
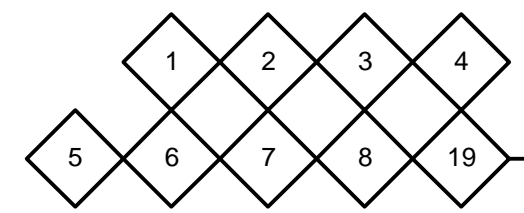
FIELD

ALARM AUTO DIALER

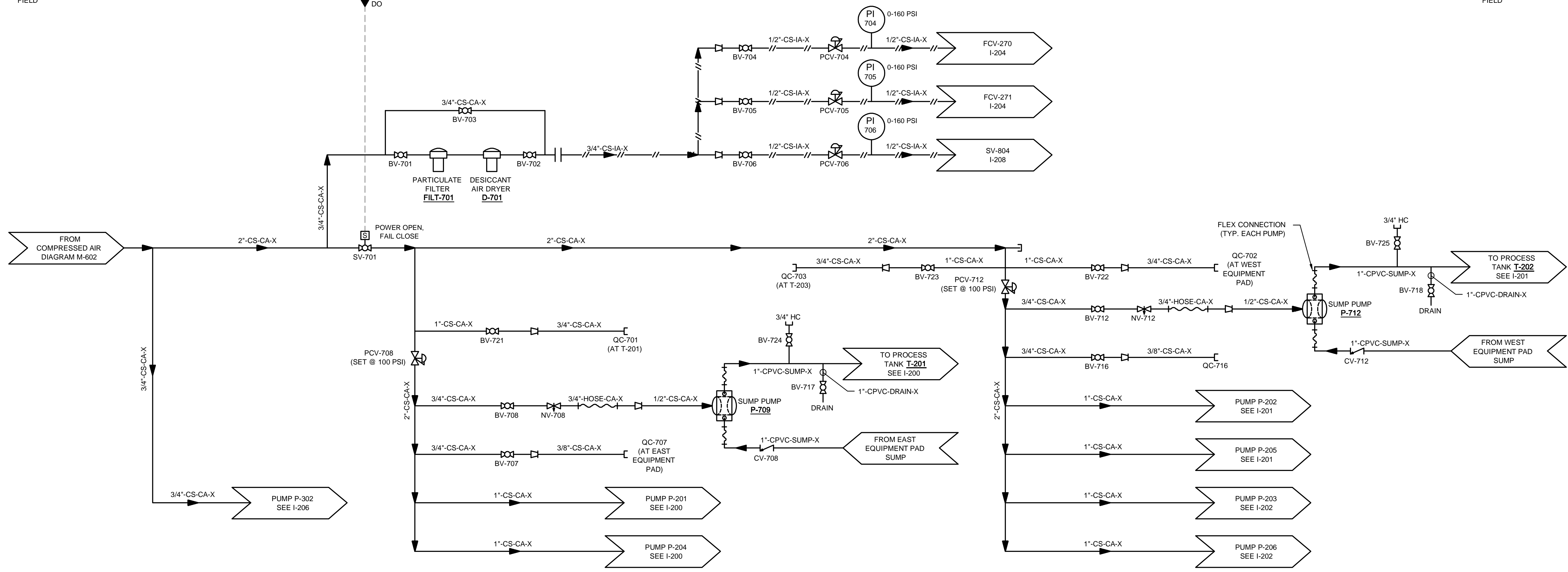
CONTROL PANEL
MCP-100

CONTROL PANEL
MCP-100

FIELD



DO



EQUIPMENT ID	P-709, P-712	SV-701	D-701	FILT-701	PCV-704, 705, 706	PCV-708, 712	-	-	-	-
DESCRIPTION	SUMP PUMP	COMPRESSED AIR SHUTOFF	AIR DRYER	AIR FILTER	PRESSURE REGULATOR	PRESSURE REGULATOR	-	-	-	-
TYPE	AIR DIAPHRAGM PUMP	SOLENOID VALVE	DESICCANT DRYER	PARTICULATE FILTER	-	-	-	-	-	-
MANUFACTURER	WILDEN	ASCO	WILKERSON	WILKERSON	WILKERSON	WILKERSON	-	-	-	-
SIZE	1"	2"	1/2"	3/4"	1/2"	2"	-	-	-	-
FLOW RANGE	0-50 GPM	-	-	-	0-100 CFM	0-1,200 CFM	-	-	-	-
LEVEL RANGE	-	-	-	-	-	-	-	-	-	-
POWER REQUIRMENTS	AIR OPERATED	110V	-	-	-	-	-	-	-	-
ANALYZER RANGE	-	-	-	-	-	-	-	-	-	-
WETTED MATERIAL	PVDF	304 SS, PTFE	ZINC, ALUMINUM	ZINC, ALUMINUM	ZINC	ZINC	-	-	-	-
ELEVATION	-	-	-	-	-	-	-	-	-	-
LOCAL CONTROLS / INDICATION	YES	-	-	-	-	-	-	-	-	-
MOUNTING	-	NPT	NPT	NPT	NPT	NPT	-	-	-	-
CONTROL TYPE	ON-OFF, MANUAL	POWER OPEN, FAIL CLOSED	-	-	SELF	SELF	-	-	-	-
NOTES	-	MODEL: SERIES 8210	MODEL: X25	MODEL: F30	MODEL: R28	MODEL: R40	-	-	-	-

TETRA TECH
www.tetratech.com
1489 West Warm Springs Road, Suite 110
Henderson, NV 89014
Phone: 702.946.6700 Fax: 702.997.7140

David A. Burger, P.E.
PE No. 024026, NV
EX. No. 12312016
1489 West Warm Springs Road, Suite 110
Henderson, NV 89014

DATE _____

BY	DESCRIPTION	DATE	MARK
DAB	ISSUED FOR NDEP REVIEW	8/3/16	1

BY	DESCRIPTION	DATE	MARK
DAB	ISSUED FOR NDEP REVIEW	8/3/16	1

NEVADA ENVIRONMENTAL RESPONSE TRUST
HENDERSON, NEVADA

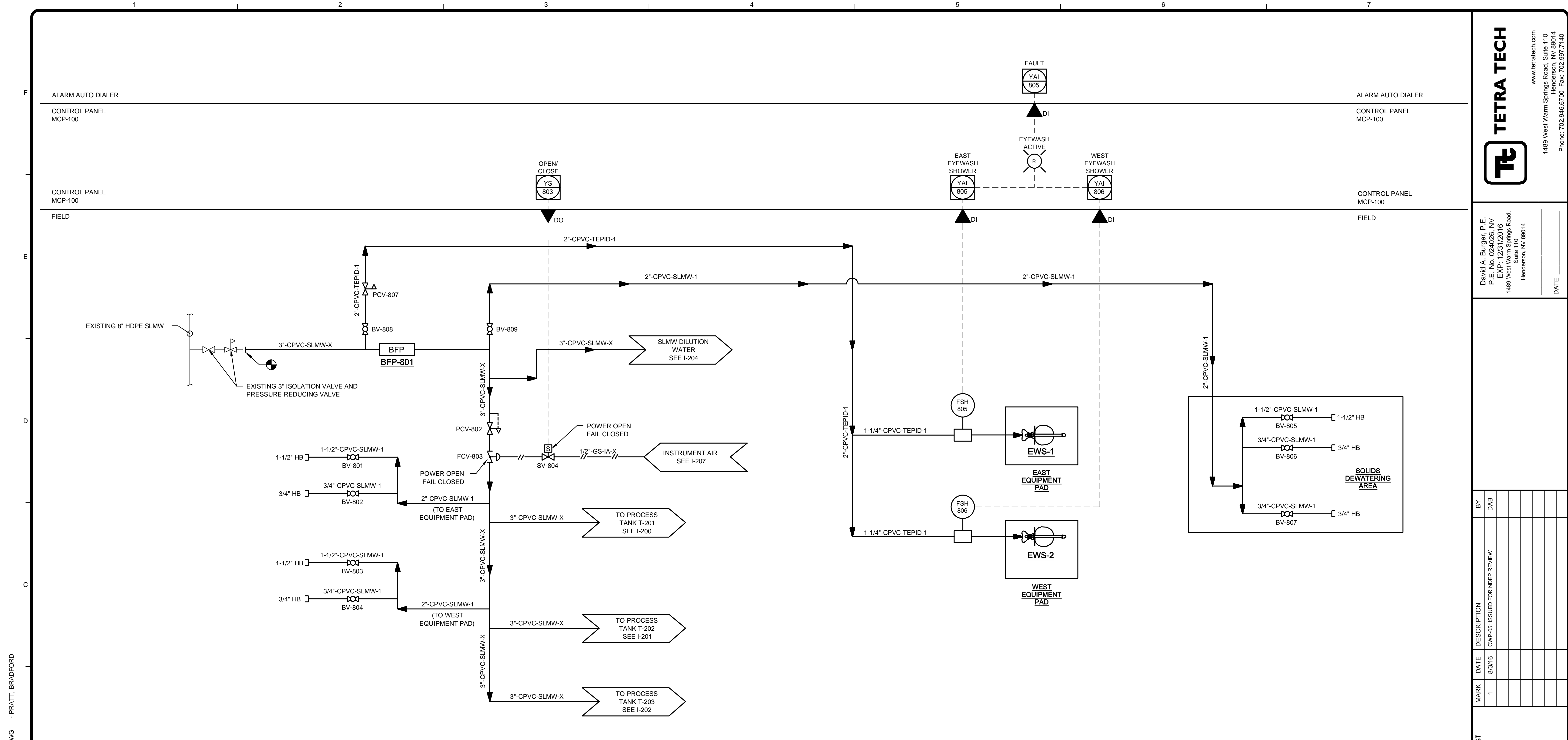
Project No.: 200-01299-16002
Designed By: J. COWARD
Drawn By: T. CALZARETTA
Checked By: D. BURGER

AP-5 POND PHASE II
PROJECT IMPLEMENTATION

**COMPRESSED AIR
P&ID**

I-207

Copyright: Tetra Tech



EQUIPMENT ID	BFP-801	PCV-802	FCV-803	PCV-807	SV-804	FS-805, FS-806	EWS-1, EWS-2		
DESCRIPTION	BACKFLOW PREVENTOR	PRESSURE CONTROL	SHUT-OFF	PRESSURE REGULATOR	SHUT-OFF	FLOW SWITCH	EMERGENCY SHOWER		
TYPE	REDUCED PRESSURE ZONE	GLOBE	BUTTERFLY	-	SOLENOID	-	SHOWER/EYE/FACE		
MANUFACTURER	WATTS	CLA-VAL	HAYWARD	WATTS	ASCO	-	GUARDIAN		
SIZE	3"	3"	3"	2"	3/8"	1-1/4"	1-1/4"		
FLOW RANGE	0-300 GPM	2 - 460 GPM	2 - 460 GPM	0 - 20 GPM	-	4-20 GPM	20 GPM		
LEVEL RANGE	-	-	-	-	-	-	-		
POWER REQUIRMENTS	-	-	PNEUMATIC	-	PNEUMATIC - 110V	110V	-		
ANALYZER RANGE	-	-	-	-	-	-	-		
WETTED MATERIAL	CI, SS	CS, BRONZE	PVC	BRONZE	BRASS	-	GALVANIZED		
ELEVATION	-	-	-	-	-	-	-		
LOCAL CONTROLS / INDICATION	-	-	-	-	-	STROBE/HORN/SENSING	YES		
MOUNTING	FLANGED	FLANGED	FLANGED	NPT	NPT	NPT	-		
CONTROL TYPE	-	PRESSURE	ON-OFF	DIRECT ACTING	ON-OFF	ON-OFF	-		
NOTES	MODEL: LF909	MODEL: 92-01	MODEL: BYV	MODEL: LF223	MODEL: SERIES 8210	MODEL: AP275-705	MODEL: G1942		

TETRA TECH
 www.tetra-tech.com
 1489 West Warm Springs Road, Suite 110
 Henderson, NV 89014
 Phone: 702.946.6700 Fax: 702.997.7140

David A. Burger, P.E.
 PE No. 024026, NV
 EX. No. 12312016
 1489 West Warm Springs Road, Suite 110
 Henderson, NV 89014

BY	DATE	DESCRIPTION
DAB	8/3/16	CWP-05 ISSUED FOR NDEFP REVIEW

MARK	DATE	DESCRIPTION
1	8/3/16	CWP-05 ISSUED FOR NDEFP REVIEW

NEVADA ENVIRONMENTAL RESPONSE TRUST
 HENDERSON, NEVADA
 AP-5 POND PHASE II
 PROJECT IMPLEMENTATION
STABILIZED LAKE MEAD WATER P&ID

Project No.: 200-01299-16002
 Designed By: W. KRAMER
 Drawn By: S. ULREY
 Checked By: D. BURGER

I-208