

Nevada Environmental Response Trust Groundwater Extraction and Treatment System Enhanced Operational Metrics																											
Date	LS #1 Flow ² (gpm)	East Well (PC-116R)		Center Well (PC99R3)		West Well (PC-115R)		PC 117		PC 118		PC 119		PC 120		PC 121		PC 133									
		Flow (gpm)	Water Elevation (ft amsl)	Flow (gpm)	Water Elevation (ft amsl)	Flow (gpm)	Water Elevation (ft amsl)	Flow (gpm)	Water Elevation (ft amsl)	Flow (gpm)	Water Elevation (ft amsl)	Flow (gpm)	Water Elevation (ft amsl)	Flow (gpm)	Water Elevation (ft amsl)	Flow (gpm)	Water Elevation (ft amsl)	Flow (gpm)	Water Elevation (ft amsl)								
05/01/16	534	117	1539.2	58	1540.9	118	1544.2	117	1538.6	58	1547.3	59	1548.8	0	1550.8	0	1550.0	7	1520.0								
05/02/16	535	117	1539.2	59	1540.9	117	1544.2	117	1538.6	59	1547.3	58	1548.8	0	1550.9	0	1550.6	8	1520.0								
05/03/16	522	115	1539.2	57	1540.9	114	1544.2	115	1538.6	57	1547.3	57	1548.9	0	1550.9	0	1550.7	8	1520.0								
05/04/16	548	120	1539.2	60	1541.3	121	1544.2	120	1538.6	60	1547.3	61	1548.9	0	1550.9	0	1550.7	7	1520.0								
05/05/16	533	117	1539.2	59	1540.8	117	1544.2	117	1538.6	59	1547.3	58	1548.9	0	1550.9	0	1550.7	6	1520.0								
05/06/16	528	116	1539.2	58	1541.2	116	1544.2	116	1538.6	58	1547.3	58	1548.8	0	1550.9	0	1550.7	7	1520.0								
05/07/16	534	117	1539.3	58	1541.3	117	1544.2	117	1538.7	59	1547.4	59	1548.9	0	1550.9	0	1550.7	6	1520.0								
05/08/16	531	117	1539.3	59	1541.0	117	1544.2	117	1538.7	58	1547.3	58	1548.9	0	1550.9	0	1550.7	6	1520.0								
05/09/16	534	117	1539.3	58	1541.1	118	1544.2	118	1538.7	59	1547.3	59	1548.9	0	1550.9	0	1550.7	6	1520.0								
05/10/16	532	118	1539.2	59	1541.1	117	1544.2	117	1538.6	58	1547.3	58	1548.9	0	1550.9	0	1550.7	6	1520.0								
05/11/16	534	117	1539.2	59	1541.1	117	1544.2	117	1538.6	59	1547.3	59	1548.8	0	1550.8	0	1550.6	6	1520.0								
05/12/16	552	117	1539.2	66	1540.8	121	1544.2	121	1538.6	60	1547.3	60	1548.8	0	1550.8	0	1550.6	6	1520.0								
05/13/16	514	117	1539.1	51	1540.9	113	1544.2	113	1538.6	57	1547.3	57	1548.8	0	1550.8	0	1550.6	6	1520.0								
05/14/16	539	117	1539.1	64	1540.9	117	1544.1	117	1538.6	59	1547.3	59	1548.8	0	1550.8	0	1550.6	6	1520.0								
05/15/16	533	117	1539.1	59	1541.2	117	1544.1	117	1538.5	58	1547.2	59	1548.8	0	1550.8	0	1550.6	6	1520.0								
05/16/16	534	117	1539.1	59	1541.2	117	1544.1	117	1538.5	59	1547.2	58	1548.8	0	1550.8	0	1550.6	6	1520.0								
05/17/16	535	117	1539.1	60	1541.0	117	1544.1	117	1538.5	58	1547.2	58	1548.8	0	1550.8	0	1550.6	8	1520.0								
05/18/16	537	117	1539.2	60	1540.8	117	1544.1	117	1538.6	59	1547.2	59	1548.8	0	1550.8	0	1550.5	9	1520.0								
05/19/16	536	117	1539.1	60	1541.0	117	1544.1	117	1538.6	59	1547.2	59	1548.8	0	1550.8	0	1550.5	8	1520.0								
05/20/16	533	117	1539.1	59	1541.3	117	1544.1	117	1538.5	58	1547.2	59	1548.8	0	1550.7	0	1550.5	5	1520.0								
05/21/16	537	117	1539.1	60	1541.1	118	1544.1	118	1538.5	59	1547.2	58	1548.7	0	1550.7	0	1550.5	7	1520.0								
05/22/16	533	117	1539.0	60	1541.0	117	1544.0	117	1538.5	58	1547.2	58	1547.8	0	1550.7	0	1550.5	6	1520.0								
05/23/16	535	117	1539.0	60	1541.3	118	1544.0	118	1538.5	59	1547.2	59	1548.7	0	1550.7	0	1550.5	6	1520.0								
05/24/16	534	117	1539.0	60	1540.9	117	1544.0	117	1538.5	59	1547.1	59	1548.7	0	1550.7	0	1550.5	6	1520.0								
05/25/16	534	117	1539.0	60	1540.9	117	1544.0	117	1538.4	59	1547.1	59	1548.7	0	1550.7	0	1550.4	6	1520.0								
05/26/16	531	117	1539.0	60	1541.1	116	1544.0	116	1538.4	59	1547.1	58	1548.7	0	1550.6	0	1550.4	6	1520.0								
05/27/16 ³	534	117	1539.0	60	1541.2	117	1544.0	117	1538.5	59	1547.1	59	1548.7	0	1550.6	0	1550.4	6	1520.0								
05/28/16	573	153	1539.0	69	1541.0	97	1544.0	119	1538.4	69	1547.1	60	1548.6	0	1550.6	0	1550.4	6	1520.0								
05/29/16	575	153	1538.9	70	1541.3	97	1544.0	119	1538.4	69	1547.1	60	1548.6	0	1550.6	0	1550.4	6	1520.0								
05/30/16	574	153	1538.9	70	1540.8	97	1544.0	119	1538.4	69	1547.1	60	1548.6	0	1550.6	0	1550.4	7	1520.0								
05/31/16	573	153	1538.9	69	1541.0	96	1544.0	118	1538.4	69	1547.1	60	1548.6	0	1550.6	0	1550.4	8	1520.0								
Monthly Average	539	122	1539.1	61	1541.0	114	1544.1	117	1538.5	60	1547.2	59	1548.7	0	1550.8	0	1550.5	7	1520.0								
Analytical ¹	Conc (mg/L)		Date	Conc (mg/L)		Date	Conc (mg/L)		Date	Conc (mg/L)		Date	Conc (mg/L)		Date	Conc (mg/L)		Date	Conc (mg/L)		Date						
Perchlorate	12		5/2/2016	17		5/2/2016	15		5/2/2016	8.0		5/2/2016	5.2		5/2/2016	0.69		5/2/2016	0.0055		5/2/2016	ND		5/2/2016	0.72		5/2/2016
Hexavalent Chromium	ND		5/2/2016	ND		5/2/2016	ND		5/2/2016	0.00400		5/2/2016	ND		5/2/2016	ND		5/2/2016	ND		5/2/2016	ND		5/2/2016	ND		5/2/2016
Total Chromium	ND		5/2/2016	ND		5/2/2016	ND		5/2/2016	0.0029		5/2/2016	ND		5/2/2016	ND		5/2/2016	ND		5/2/2016	ND		5/2/2016	ND		5/2/2016

Notes:
 Flow reported as gpm is a daily average calculated from the totalizer reading.
 NA = Not Available; ND = Not detected above laboratory method detection limit (ClO₄ = 0.5 ug/L; Cr(TR)=2.5 ug/L, Cr(VI) = 1 ug/L).
 1: Analytical results are reported from TestAmerica.
 2: Flows for LS #1 estimated using SWF combined daily flow total due to communication issues with the totalizer from 05/01 - 05/31.
 3: Totalizer reset for LS #1 and well field.

Nevada Environmental Response Trust Groundwater Extraction and Treatment System Enhanced Operational Metrics																	
Date	LS #3 Flow³ (gpm)	ART 1A/1B		ART 2A/2B		ART 3A/3B		ART 4A/4B		ART 6/9		ART 7A/7B		ART 8A/8B		PC-150	
		Flow (gpm)	Water Elevation (ft amsl)	Flow (gpm)	Water Elevation (ft amsl)	Flow (gpm)	Water Elevation (ft amsl)	Flow (gpm)	Water Elevation (ft amsl)	Flow² (gpm)	Water Elevation (ft amsl)	Flow (gpm)	Water Elevation (ft amsl)	Flow (gpm)	Water Elevation (ft amsl)	Flow (gpm)	Water Elevation (ft amsl)
05/01/16	234	0	1591.5	58	1590.7	58	1587.5	7	1575.0	58	1576.6	29	1578.0	58	1586.9	4	1584.2
05/02/16	234	0	1591.5	59	1590.7	59	1587.5	8	1575.0	59	1576.6	29	1578.0	59	1586.9	3	1584.6
05/03/16	234	0	1591.5	59	1590.7	59	1587.5	7	1575.0	59	1576.6	29	1578.0	59	1586.9	3	1583.8
05/04/16	234	0	1591.5	59	1590.8	59	1587.5	8	1575.0	59	1576.6	30	1578.0	59	1586.9	3	1585.0
05/05/16	234	0	1591.5	56	1590.8	55	1587.5	7	1575.0	56	1576.6	28	1578.0	56	1586.9	3	1584.2
05/06/16	235	0	1591.5	61	1590.8	61	1587.5	8	1575.0	61	1576.6	29	1578.0	61	1586.9	3	1584.4
05/07/16	234	0	1591.6	58	1590.8	59	1587.5	7	1575.0	58	1576.6	29	1578.0	58	1587.0	3	1584.2
05/08/16	234	0	1591.6	59	1590.8	58	1587.6	7	1575.0	59	1576.6	29	1578.0	59	1587.0	3	1584.2
05/09/16	235	0	1591.6	57	1590.8	57	1587.6	7	1575.0	57	1576.6	29	1578.0	57	1587.0	3	1584.8
05/10/16	234	0	1591.6	62	1590.8	62	1587.6	9	1575.0	62	1576.6	30	1578.0	62	1587.0	3	1584.3
05/11/16	235	0	1591.6	58	1590.8	59	1587.6	13	1575.0	59	1576.6	30	1578.0	59	1587.0	3	1584.9
05/12/16	234	0	1591.6	61	1590.8	60	1587.6	14	1575.0	60	1576.6	31	1578.0	60	1587.0	3	1584.2
05/13/16	282	0	1591.6	56	1590.8	57	1587.6	12	1575.0	57	1576.6	28	1578.0	57	1587.0	3	1584.2
05/14/16	267	0	1591.6	59	1590.9	59	1587.6	13	1575.0	59	1576.6	30	1578.0	59	1587.0	3	1584.7
05/15/16	267	0	1591.6	58	1590.9	59	1587.6	13	1575.0	58	1576.6	29	1578.0	58	1587.0	3	1584.8
05/16/16	267	0	1591.6	59	1590.9	58	1587.6	14	1575.0	59	1576.6	30	1578.0	59	1587.0	3	1584.8
05/17/16	265	0	1591.6	58	1590.9	59	1587.6	13	1575.0	58	1576.6	29	1578.0	58	1587.0	3	1585.0
05/18/16	265	0	1591.6	59	1590.9	59	1587.6	13	1575.0	59	1576.6	29	1578.0	59	1587.0	3	1584.1
05/19/16	259	0	1591.7	59	1590.9	59	1587.6	11	1575.0	59	1576.6	30	1578.0	59	1587.1	3	1584.5
05/20/16	259	0	1591.7	58	1591.0	58	1587.7	12	1575.0	58	1576.6	29	1578.0	58	1587.2	4	1584.5
05/21/16	263	0	1591.7	58	1591.0	58	1587.7	14	1575.0	59	1576.6	29	1578.0	59	1587.3	3	1584.1
05/22/16	264	0	1591.8	59	1591.0	59	1587.8	13	1575.0	58	1576.6	29	1578.0	59	1587.3	3	1584.3
05/23/16	264	0	1591.8	59	1591.0	59	1587.8	13	1575.0	59	1576.6	29	1578.0	59	1587.3	3	1584.6
05/24/16	264	0	1591.8	59	1591.1	58	1587.8	12	1575.0	59	1576.6	29	1578.0	59	1587.3	3	1584.5
05/25/16	263	0	1591.8	58	1591.1	59	1587.8	15	1575.0	59	1576.6	30	1578.0	59	1587.3	3	1584.8
05/26/16	264	0	1591.8	59	1591.1	59	1587.8	14	1575.0	59	1576.6	29	1578.0	59	1587.4	4	1584.5
05/27/16	251	0	1591.9	59	1591.1	59	1587.8	13	1575.0	59	1576.6	15	1578.0	59	1587.4	3	1584.4
05/28/16	234	0	1591.9	59	1591.1	59	1587.8	13	1575.0	59	1581.3	7	1581.7	59	1587.4	3	1584.5
05/29/16	234	0	1591.9	59	1591.1	59	1587.9	13	1575.0	59	1581.5	8	1583.4	59	1587.4	4	1583.8
05/30/16	235	0	1591.9	58	1591.1	58	1587.7	14	1575.0	59	1581.5	8	1583.8	59	1587.4	4	1584.8
05/31/16	235	0	1591.9	59	1591.1	59	1587.9	13	1575.0	59	1581.6	8	1584.2	59	1587.4	4	1584.8
Monthly Average	249	0	1591.7	59	1590.9	59	1587.7	11	1575.0	59	1577.2	26	1578.7	59	1587.1	3	1584.5
Analytical¹		Conc (mg/L)	Date	Conc (mg/L)	Date	Conc (mg/L)	Date	Conc (mg/L)	Date	Conc (mg/L)²	Date	Conc (mg/L)	Date	Conc (mg/L)	Date	Conc (mg/L)	Date
Perchlorate		21	5/2/2016	21	5/2/2016	160	5/2/2016	210	5/2/2016	210	5/2/2016	110	5/2/2016	89	5/2/2016	200	5/2/2016
Hexavalent Chromium		0.007	5/2/2016	ND	5/2/2016	0.569	5/2/2016	0.47	5/2/2016	1.06	5/2/2016	0.886	5/2/2016	0.081	5/2/2016	0.759	5/2/2016
Total Chromium		0.0042	5/2/2016	0.0049	5/2/2016	0.27	5/2/2016	0.47	5/2/2016	0.83	5/2/2016	0.58	5/2/2016	0.082	5/2/2016	0.37	5/2/2016

Notes:
 Flow reported as gpm is a daily average calculated from the totalizer reading. NA = Not Available.
 1: Analytical results are reported from TestAmerica.
 2: Concentrations reported for ART-9.
 3: Totalizer reset on 05/12/2016.

Nevada Environmental Response Trust Groundwater Extraction and Treatment System Enhanced Operational Metrics																				
Date	I-AR		I-AA		I-AB		I-AC		I-AD		I-B		I-C		I-D		I-E		I-F	
	Flow ² (gpm)	Water Elevation (ft amsl)	Flow (gpm)	Water Elevation (ft amsl)	Flow (gpm)	Water Elevation (ft amsl)	Flow (gpm)	Water Elevation (ft amsl)	Flow (gpm)	Water Elevation (ft amsl)	Flow (gpm)	Water Elevation (ft amsl)	Flow (gpm)	Water Elevation (ft amsl)	Flow ² (gpm)	Water Elevation (ft amsl)	Flow (gpm)	Water Elevation (ft amsl)	Flow (gpm)	Water Elevation (ft amsl)
05/01/16	0.47	1728.9	0.97	1708.0	0.18	1721.0	0.00	1723.4	0.00	1725.0	0.70	1709.9	2.83	1722.0	4.83	1706.4	1.88	1716.8	3.75	1720.5
05/02/16	0.47	1728.8	0.99	1708.0	0.18	1721.0	0.00	1723.4	0.00	1725.0	0.68	1709.6	2.69	1722.0	4.84	1708.7	1.87	1716.8	3.75	1720.5
05/03/16	0.35	1728.9	0.94	1708.0	0.18	1721.0	0.00	1723.4	0.00	1725.0	0.70	1709.7	2.54	1722.0	4.91	1706.6	1.88	1716.8	3.75	1720.5
05/04/16	0.47	1728.0	0.94	1714.9	0.18	1721.1	0.00	1723.4	0.00	1725.1	0.64	1709.5	2.37	1722.0	5.00	1706.1	1.88	1716.9	3.75	1720.6
05/05/16	0.47	1727.8	0.94	1714.6	0.18	1721.1	0.00	1723.4	0.00	1725.1	0.73	1709.6	2.17	1722.0	5.06	1708.1	1.87	1716.9	3.75	1720.6
05/06/16	0.47	1727.9	0.94	1714.8	0.18	1721.1	0.00	1723.5	0.00	1725.1	0.74	1709.4	1.95	1722.0	4.94	1706.7	1.88	1716.9	3.75	1720.6
05/07/16	0.47	1728.0	0.94	1714.9	0.18	1721.1	0.00	1723.4	0.00	1725.1	0.80	1709.6	2.16	1722.0	4.93	1706.1	1.87	1716.9	3.75	1720.6
05/08/16	0.47	1728.1	0.94	1714.9	0.18	1721.1	0.00	1723.5	0.00	1725.1	0.82	1709.5	2.39	1722.0	5.04	1706.1	1.87	1717.0	3.75	1720.7
05/09/16	0.47	1728.0	0.94	1715.0	0.18	1721.1	0.00	1723.5	0.00	1725.1	0.80	1709.7	2.33	1722.0	5.04	1707.5	1.88	1717.0	3.75	1720.7
05/10/16	0.25	1728.1	0.75	1715.1	0.18	1721.1	0.00	1723.5	0.00	1725.1	0.77	1709.7	3.09	1720.0	4.91	1706.1	1.83	1717.0	3.63	1720.7
05/11/16	0.41	1728.6	0.94	1708.0	0.18	1721.1	0.00	1723.4	0.00	1725.1	0.80	1709.7	3.80	1710.0	4.81	1706.2	1.91	1717.2	3.75	1720.5
05/12/16	0.47	1728.2	0.94	1708.0	0.17	1721.0	0.00	1723.4	0.00	1725.1	0.75	1709.9	3.77	1710.0	4.68	1706.2	1.84	1717.1	3.75	1720.5
05/13/16	0.47	1728.2	0.94	1708.0	0.13	1721.0	0.00	1723.5	0.00	1725.1	0.78	1709.6	3.76	1710.0	4.68	1706.2	1.88	1717.1	3.75	1720.4
05/14/16	0.47	1728.1	0.94	1708.0	0.12	1721.0	0.00	1723.5	0.00	1725.1	0.81	1709.8	3.75	1710.0	4.71	1706.4	1.87	1717.1	3.75	1720.4
05/15/16	0.47	1728.0	0.94	1708.0	0.12	1721.0	0.00	1723.5	0.00	1725.1	0.79	1709.7	3.75	1710.0	4.73	1706.3	1.88	1717.0	3.75	1720.4
05/16/16	0.47	1727.9	0.94	1708.0	0.12	1721.0	0.00	1723.5	0.00	1725.1	0.83	1709.7	3.75	1710.0	4.47	1706.2	1.88	1717.0	3.75	1720.3
05/17/16	0.47	1727.9	1.01	1708.0	0.12	1721.0	0.00	1723.5	0.00	1725.1	0.87	1709.7	3.75	1710.0	4.42	1706.0	1.88	1716.1	3.75	1720.0
05/18/16	0.80	1727.9	0.98	1708.0	0.12	1721.0	0.00	1723.4	0.00	1725.1	0.84	1709.5	3.75	1710.0	3.35	1706.4	1.88	1715.9	3.75	1719.9
05/19/16	0.47	1716.2	0.94	1708.0	0.12	1721.0	0.00	1723.4	0.00	1725.1	0.79	1709.7	3.75	1710.0	3.75	1720.4	1.87	1708.9	3.75	1719.5
05/20/16	0.47	1723.7	0.94	1708.0	0.12	1721.1	0.00	1723.5	0.00	1725.1	0.86	1709.5	3.75	1710.0	3.75	1719.3	1.87	1708.7	3.75	1719.2
05/21/16	0.47	1725.8	0.94	1708.0	0.12	1721.0	0.00	1723.4	0.00	1725.1	0.86	1709.7	3.75	1710.0	3.75	1717.5	1.87	1708.6	3.75	1719.0
05/22/16	0.22	1726.3	0.93	1708.0	0.12	1721.0	0.00	1723.4	0.00	1725.1	0.80	1709.7	3.73	1710.0	3.73	1715.3	1.84	1708.6	3.69	1718.8
05/23/16	0.20	1728.0	0.94	1708.0	0.12	1721.0	0.00	1723.4	0.00	1725.1	0.76	1709.7	3.75	1710.0	3.75	1716.9	1.87	1708.6	3.75	1718.7
05/24/16	0.20	1728.4	0.93	1708.0	0.12	1721.0	0.00	1723.5	0.02	1725.1	0.82	1709.4	3.73	1710.0	3.73	1715.8	1.87	1708.6	3.72	1718.6
05/25/16	0.20	1728.5	0.94	1709.3	0.12	1721.0	0.00	1723.4	0.00	1725.1	0.81	1709.5	3.75	1710.0	3.75	1717.2	1.87	1716.0	3.75	1718.6
05/26/16	0.20	1728.6	0.94	1708.0	0.12	1721.0	0.00	1723.4	0.00	1725.1	0.79	1709.6	3.75	1710.6	3.75	1714.4	1.87	1708.6	3.75	1718.4
05/27/16	0.20	1728.5	0.98	1708.0	0.12	1721.0	0.00	1723.4	0.00	1725.1	0.76	1709.7	3.75	1711.2	3.75	1712.3	1.87	1708.6	3.75	1718.3
05/28/16	0.20	1728.6	0.96	1708.0	0.12	1721.0	0.00	1723.4	0.00	1725.1	0.76	1709.4	3.75	1710.9	3.75	1712.2	1.85	1708.6	3.75	1718.2
05/29/16	0.20	1728.6	0.94	1708.0	0.12	1721.0	0.00	1723.4	0.00	1725.1	0.73	1709.5	3.75	1711.2	3.75	1710.2	1.80	1708.7	3.75	1718.1
05/30/16	0.20	1728.6	0.94	1708.0	0.12	1721.0	0.00	1723.4	0.00	1725.1	0.73	1709.7	3.75	1711.6	3.75	1708.1	1.77	1708.8	3.75	1718.0
05/31/16	0.20	1728.6	0.94	1708.0	0.12	1721.0	0.00	1723.4	0.00	1725.1	0.73	1709.7	3.75	1712.1	3.75	1707.5	1.67	1708.7	3.75	1717.9
Monthly Average	0.38	1727.6	0.94	1709.6	0.14	1721.0	0.00	1723.4	0.00	1725.1	0.78	1709.6	3.33	1714.1	4.32	1709.9	1.86	1713.7	3.74	1719.7
Analytical ¹	Conc (mg/L)	Date	Conc (mg/L)	Date	Conc (mg/L)	Date	Conc (mg/L)	Date	Conc (mg/L)	Date	Conc (mg/L)	Date	Conc (mg/L)	Date	Conc (mg/L)	Date	Conc (mg/L)	Date	Conc (mg/L)	Date
Perchlorate	980	5/3/2016	80	5/3/2016	250	5/3/2016	100	5/24/2016	100	5/24/2016	450	5/3/2016	530	5/3/2016	670	5/3/2016	560	5/3/2016	850	5/2/2016
Hexavalent Chromium	ND	5/3/2016	0.06	5/3/2016	ND	5/3/2016	0.272	4/8/2016 ³	0.017	4/8/2016 ³	0.1	5/3/2016	2.89	5/3/2016	8.87	5/3/2016	8.66	5/3/2016	13.3	5/2/2016
Total Chromium	0.085	5/3/2016	0.14	5/3/2016	0.0038	5/3/2016	0.73	5/24/2016	0.86	5/24/2016	0.093	5/3/2016	2.7	5/3/2016	5.9	5/3/2016	7.3	5/3/2016	14	5/2/2016

Notes:
 Flow reported as gpm is a daily average calculated from the totalizer reading. NA=Not Available.
 1: Analytical results are reported from TestAmerica.
 2: Flow adjusted on 05/18/2016 to optimize GWTP influent.
 3: May 2016 data not available from TestAmerica at time of submission. April 2016 data are presented for calculation purposes.

Nevada Environmental Response Trust Groundwater Extraction and Treatment System Enhanced Operational Metrics																				
Date	I-G		I-H		I-I		I-J		I-K		I-L		I-M		I-N		I-O		I-P	
	Flow (gpm)	Water Elevation (ft amsl)	Flow (gpm)	Water Elevation (ft amsl)	Flow (gpm)	Water Elevation (ft amsl)	Flow (gpm)	Water Elevation (ft amsl)	Flow (gpm)	Water Elevation (ft amsl)	Flow (gpm)	Water Elevation (ft amsl)	Flow ^{2,4} (gpm)	Water Elevation (ft amsl)	Flow ² (gpm)	Water Elevation (ft amsl)	Flow (gpm)	Water Elevation (ft amsl)	Flow (gpm)	Water Elevation (ft amsl)
05/01/16	0.24	1711.0	0.94	1718.6	3.75	1721.3	7.50	1707.0	2.78	1716.2	1.88	1711.5	1.88	1721.2	3.75	1712.4	0.94	1721.3	2.63	1709.6
05/02/16	0.23	1711.0	0.94	1718.6	3.75	1721.3	7.50	1707.0	3.75	1716.1	1.87	1711.5	1.87	1721.2	3.75	1712.4	0.70	1721.2	2.48	1709.7
05/03/16	0.22	1711.2	0.94	1718.4	3.75	1721.2	7.50	1707.0	3.75	1716.2	1.88	1711.3	1.88	1721.2	3.75	1712.8	0.94	1721.1	2.46	1709.6
05/04/16	0.23	1711.0	0.94	1718.4	3.75	1721.2	7.50	1707.0	3.75	1716.3	1.87	1711.2	1.87	1721.6	3.75	1713.8	0.94	1722.1	2.43	1710.6
05/05/16	0.24	1711.0	0.94	1718.4	3.75	1721.2	7.50	1707.0	3.75	1716.3	1.87	1711.3	1.87	1721.6	3.75	1714.8	0.94	1721.1	2.55	1709.6
05/06/16	0.24	1711.0	0.94	1718.5	3.75	1721.2	7.50	1707.0	3.75	1716.4	1.88	1711.4	1.88	1721.6	3.75	1714.6	0.94	1721.1	2.60	1709.7
05/07/16	0.23	1711.0	0.91	1718.5	3.75	1721.2	7.50	1707.0	3.75	1716.4	1.87	1711.4	1.88	1721.6	3.75	1715.0	0.91	1721.1	2.53	1709.7
05/08/16	0.25	1711.0	0.97	1718.5	3.75	1721.2	7.50	1707.0	3.75	1716.4	1.87	1711.3	1.87	1721.6	3.75	1715.8	0.97	1721.1	2.71	1709.7
05/09/16	0.25	1711.0	0.94	1718.5	3.75	1721.2	7.50	1707.0	3.75	1716.4	1.87	1711.3	1.88	1721.6	3.75	1715.9	0.94	1721.1	2.62	1709.7
05/10/16	0.26	1711.0	0.92	1718.5	3.66	1721.2	7.50	1707.0	3.67	1716.4	1.88	1711.3	1.83	1721.6	3.67	1716.8	1.56	1721.1	2.54	1709.8
05/11/16	0.25	1711.0	0.94	1709.5	3.75	1721.2	7.50	1707.0	3.75	1716.7	1.88	1711.3	1.88	1720.7	3.75	1714.8	1.31	1720.3	2.47	1709.7
05/12/16	0.26	1711.0	0.94	1709.5	3.75	1721.2	7.50	1707.0	3.75	1716.7	1.88	1711.3	1.87	1720.6	3.75	1713.9	1.24	1720.6	2.59	1709.8
05/13/16	0.27	1711.0	0.94	1709.5	3.75	1721.2	7.50	1707.0	3.75	1716.8	1.88	1711.3	1.88	1720.6	3.75	1712.5	1.03	1720.8	2.60	1709.7
05/14/16	0.26	1711.0	0.94	1709.5	3.75	1721.3	7.50	1707.0	3.75	1716.9	1.87	1711.3	1.87	1720.6	3.75	1712.4	0.94	1720.8	2.68	1709.8
05/15/16	0.26	1711.0	0.94	1709.7	3.75	1721.3	7.50	1707.0	3.75	1716.9	1.88	1711.3	1.88	1720.5	3.75	1712.7	0.94	1720.9	2.78	1709.9
05/16/16	0.25	1711.0	0.94	1710.2	3.75	1721.3	7.50	1707.0	3.75	1716.9	1.88	1711.3	3.12	1720.5	3.75	1712.5	0.94	1721.0	2.65	1709.7
05/17/16	0.22	1711.0	0.94	1709.5	3.75	1721.2	7.50	1707.0	3.75	1712.7	1.88	1711.3	3.75	1718.7	3.75	1712.2	0.94	1720.8	2.48	1709.7
05/18/16	0.21	1711.0	0.94	1709.5	3.75	1721.1	7.50	1707.0	3.75	1713.0	1.88	1711.4	3.81	1718.5	6.99	1712.2	0.94	1720.7	2.44	1710.0
05/19/16	0.21	1711.1	0.94	1709.5	3.75	1721.1	7.49	1707.0	3.75	1712.6	1.87	1711.3	3.75	1717.9	7.50	1712.1	0.94	1721.0	2.20	1709.8
05/20/16	0.20	1711.1	0.94	1712.6	3.75	1721.2	7.50	1707.0	3.75	1712.6	1.87	1711.4	3.02	1718.0	7.50	1712.1	0.94	1721.1	2.20	1721.5
05/21/16	0.19	1711.1	0.94	1716.4	3.75	1721.3	7.50	1707.0	3.75	1712.7	1.88	1711.3	1.88	1719.0	7.50	1712.1	0.94	1721.3	2.20	1721.6
05/22/16	0.19	1711.1	0.93	1717.8	3.73	1721.3	3.49	1707.0	3.73	1712.8	1.88	1711.4	1.86	1719.0	7.38	1712.1	0.93	1721.4	2.20	1721.7
05/23/16	0.13	1711.4	0.94	1718.4	6.46	1721.5	6.25	1721.9	3.75	1713.4	1.88	1711.3	1.87	1719.7	7.50	1712.2	0.94	1721.6	2.20	1721.9
05/24/16	0.10	1718.7	0.93	1717.8	7.46	1721.5	7.46	1707.0	3.73	1713.8	1.87	1711.4	1.87	1719.7	7.15	1712.2	0.93	1721.5	2.20	1719.2
05/25/16	0.10	1720.5	0.94	1717.8	7.50	1721.4	7.50	1707.0	3.75	1713.8	1.88	1711.3	1.88	1719.8	6.92	1712.2	0.94	1721.4	1.88	1719.4
05/26/16	0.20	1720.3	0.94	1717.2	7.50	1721.4	7.50	1707.0	3.75	1713.7	1.87	1711.3	1.87	1719.7	7.17	1712.2	0.94	1721.4	1.87	1719.3
05/27/16	0.19	1720.1	0.94	1717.2	7.50	1721.3	7.50	1707.0	3.75	1713.6	1.88	1711.3	1.88	1719.6	6.60	1712.2	0.94	1721.4	1.88	1719.3
05/28/16	0.23	1716.7	0.94	1717.1	7.50	1721.3	7.50	1707.0	3.75	1713.3	1.87	1711.3	1.87	1719.7	5.84	1712.2	0.94	1721.4	1.87	1719.4
05/29/16	0.23	1716.3	0.94	1716.6	7.50	1721.3	7.50	1707.0	3.75	1713.5	1.88	1711.3	1.88	1719.6	5.67	1712.2	0.94	1721.4	1.88	1719.3
05/30/16	0.22	1716.4	0.94	1716.1	7.50	1721.2	7.50	1707.0	3.75	1713.3	1.88	1711.3	1.87	1719.5	5.27	1712.2	0.94	1721.4	1.88	1719.4
05/31/16	0.23	1716.6	0.94	1715.1	7.50	1721.3	7.50	1707.0	3.75	1713.3	1.87	1711.3	1.87	1719.4	5.32	1712.2	0.94	1721.4	1.87	1719.4
Monthly Average	0.22	1712.9	0.94	1715.2	4.80	1721.3	7.33	1707.5	3.71	1714.9	1.88	1711.3	2.13	1720.2	5.10	1713.1	0.97	1721.2	2.34	1713.8
Analytical ¹	Conc (mg/L)	Date	Conc (mg/L)	Date	Conc (mg/L)	Date	Conc (mg/L)	Date	Conc (mg/L)	Date	Conc (mg/L)	Date	Conc (mg/L)	Date	Conc (mg/L)	Date	Conc (mg/L)	Date	Conc (mg/L)	Date
Perchlorate	1700	5/2/2016	1700	5/2/2016	710	5/24/2016	300	5/24/2016	190	5/24/2016	770	5/3/2016	550	5/3/2016	730	5/3/2016	1100	5/2/2016	1400	5/2/2016
Hexavalent Chromium	20.4	5/2/2016	18.4	5/2/2016	10.9	4/8/2016 ⁴	3.79	4/8/2016 ⁴	0.632	4/8/2016 ⁴	0.82	5/3/2016	7.71	5/3/2016	9.8	5/3/2016	18.3	5/2/2016	17	5/2/2016
Total Chromium	23	5/2/2016	22	5/2/2016	10	5/24/2016	3.3	5/24/2016	1.9	5/24/2016	0.69	5/3/2016	7.1	5/3/2016	8.5	5/3/2016	22	5/2/2016	21	5/2/2016

Notes:
 Flow reported as gpm is a daily average calculated from the totalizer reading. NA=Not Available.
 1: Analytical results are reported from TestAmerica.
 2: Flow adjusted on 05/18/2016 to optimize GWTP influent.
 3: May 2016 data not available from TestAmerica at time of submission. April 2016 data are presented for calculation purposes.
 4: Flow increased on 05/16/2016.

Nevada Environmental Response Trust Groundwater Extraction and Treatment System Enhanced Operational Metrics																				
Date	I-Q		I-R		I-S		I-T		I-U		I-V		I-W		I-X		I-Y		I-Z	
	Flow ² (gpm)	Water Elevation (ft amsl)	Flow (gpm)	Water Elevation (ft amsl)	Flow (gpm)	Water Elevation (ft amsl)	Flow ² (gpm)	Water Elevation (ft amsl)	Flow (gpm)	Water Elevation (ft amsl)	Flow (gpm)	Water Elevation (ft amsl)	Flow (gpm)	Water Elevation (ft amsl)	Flow ⁴ (gpm)	Water Elevation (ft amsl)	Flow (gpm)	Water Elevation (ft amsl)	Flow (gpm)	Water Elevation (ft amsl)
05/01/16	0.47	1718.7	2.42	1708.8	3.75	1710.0	0.47	1713.1	0.47	1714.4	3.75	1718.9	0.94	1710.0	1.88	1720.3	1.86	1705.0	7.50	1705.0
05/02/16	0.47	1718.7	2.41	1709.7	3.75	1710.0	0.47	1713.2	0.47	1714.3	3.75	1718.9	0.94	1710.0	1.86	1720.4	1.86	1705.2	7.50	1705.2
05/03/16	0.47	1718.7	2.40	1708.9	3.75	1710.0	0.47	1713.0	0.47	1714.3	3.75	1718.8	0.94	1710.0	0.98	1720.4	1.38	1705.5	7.50	1705.5
05/04/16	0.47	1719.7	2.41	1709.9	3.75	1711.0	0.47	1714.0	0.47	1715.3	3.75	1719.8	0.94	1711.0	0.94	1721.4	0.93	1706.5	7.50	1706.5
05/05/16	0.47	1718.8	2.44	1709.5	3.75	1710.0	0.47	1713.1	0.47	1714.3	3.75	1718.8	0.94	1710.0	0.94	1720.6	1.53	1713.9	7.50	1712.3
05/06/16	0.47	1718.8	2.46	1709.6	3.75	1710.0	0.47	1713.1	0.47	1714.4	3.75	1718.8	0.94	1710.0	0.94	1720.6	0.94	1714.2	7.50	1712.3
05/07/16	0.45	1718.8	2.44	1709.1	3.75	1710.0	0.45	1713.1	0.45	1714.4	3.75	1718.8	0.91	1710.0	0.94	1720.6	1.66	1714.1	7.50	1712.2
05/08/16	0.48	1718.8	2.45	1709.5	3.75	1710.0	0.48	1713.1	0.48	1714.4	3.75	1718.8	0.97	1710.0	0.94	1720.6	1.51	1710.3	7.50	1712.2
05/09/16	0.47	1718.8	2.21	1710.1	3.75	1710.0	0.47	1713.1	0.47	1714.4	3.75	1718.8	0.94	1710.0	0.94	1720.7	1.19	1713.1	7.50	1712.3
05/10/16	0.48	1718.8	2.62	1708.9	3.68	1710.0	0.46	1713.1	0.76	1714.4	3.67	1718.8	0.94	1710.0	2.19	1720.7	1.03	1715.1	7.22	1712.2
05/11/16	0.47	1719.7	2.50	1708.9	3.75	1710.0	0.47	1710.0	0.94	1709.3	3.75	1718.7	0.94	1710.0	2.81	1718.8	0.92	1717.2	7.50	1712.5
05/12/16	0.47	1719.5	2.44	1708.9	3.75	1710.0	0.47	1709.3	0.94	1709.0	3.75	1718.7	0.94	1712.3	2.81	1718.7	0.90	1717.9	7.50	1712.3
05/13/16	0.47	1719.4	2.17	1709.0	3.75	1710.0	0.47	1709.5	0.94	1708.8	3.75	1718.8	0.94	1721.4	2.81	1718.7	0.20	1718.8	7.50	1712.3
05/14/16	0.47	1719.4	2.14	1709.0	3.75	1710.0	0.47	1709.6	0.94	1709.0	3.75	1718.8	0.94	1721.4	2.81	1718.7	0.20	1719.6	7.50	1712.4
05/15/16	0.47	1719.4	2.23	1710.0	3.75	1710.0	0.47	1710.0	0.94	1709.2	3.75	1718.9	0.94	1721.4	2.81	1718.6	0.20	1719.6	7.50	1712.4
05/16/16	0.47	1719.3	1.00	1708.8	3.75	1710.0	0.47	1710.1	0.94	1709.4	3.75	1718.9	0.94	1721.4	4.05	1718.5	0.20	1719.6	7.50	1712.4
05/17/16	0.47	1719.3	4.69	1709.4	3.75	1710.0	0.47	1710.1	0.94	1709.4	3.75	1718.7	0.94	1710.0	4.69	1715.6	0.20	1719.9	7.50	1710.0
05/18/16	0.47	1719.2	2.48	1709.9	3.75	1710.0	0.48	1710.0	0.94	1709.4	3.75	1718.6	0.93	1710.0	3.38	1715.2	0.20	1719.9	7.50	1710.0
05/19/16	0.47	1719.1	2.35	1709.4	3.75	1710.0	0.47	1705.1	0.94	1707.3	3.75	1718.7	0.94	1710.0	2.81	1704.8	0.20	1720.0	7.50	1710.0
05/20/16	0.94	1716.9	2.55	1709.2	3.75	1710.0	0.47	1705.1	0.94	1707.3	3.75	1718.9	0.94	1710.0	2.81	1704.3	0.20	1719.6	7.50	1710.0
05/21/16	0.94	1711.6	2.60	1709.2	3.75	1710.0	0.47	1705.1	0.94	1707.3	3.75	1719.0	0.94	1710.0	2.81	1703.8	0.20	1720.6	7.50	1710.0
05/22/16	0.93	1711.6	2.31	1708.8	3.71	1710.0	0.46	1705.1	0.92	1707.3	3.73	1719.1	0.92	1710.0	2.77	1703.7	0.20	1720.7	7.38	1710.0
05/23/16	0.94	1716.4	2.23	1709.0	3.75	1710.0	0.47	1705.1	0.94	1707.2	3.75	1719.3	0.94	1720.2	2.78	1711.7	0.20	1720.8	7.50	1710.0
05/24/16	0.93	1713.3	2.51	1709.3	3.75	1710.0	0.46	1705.1	0.92	1707.3	3.73	1719.2	0.92	1719.8	4.50	1711.9	0.20	1720.4	7.24	1710.0
05/25/16	0.94	1714.6	2.03	1709.4	3.75	1710.0	0.47	1707.0	0.94	1709.3	3.75	1719.2	0.94	1719.7	1.74	1719.7	0.20	1720.5	7.24	1719.9
05/26/16	0.94	1712.3	1.96	1709.7	3.75	1710.0	0.47	1705.1	0.94	1707.2	3.75	1719.1	0.94	1719.6	1.88	1713.1	0.20	1720.4	7.50	1710.0
05/27/16	0.94	1711.6	1.91	1708.9	3.75	1710.0	0.47	1705.1	0.94	1707.2	3.75	1719.1	0.94	1719.6	1.88	1712.7	0.20	1720.4	7.50	1710.0
05/28/16	0.94	1711.6	1.87	1708.9	3.75	1710.0	0.47	1705.1	0.94	1707.2	3.75	1719.1	0.94	1719.6	1.87	1711.2	0.20	1720.6	7.50	1710.0
05/29/16	0.94	1711.6	1.88	1708.9	3.75	1710.0	0.47	1705.1	0.94	1707.2	3.75	1719.1	0.94	1719.6	1.88	1711.0	0.20	1720.7	7.50	1710.0
05/30/16	0.94	1711.6	1.88	1708.8	3.75	1710.0	0.47	1705.1	0.94	1707.3	3.75	1719.0	0.94	1719.7	1.88	1710.2	0.20	1720.5	7.50	1710.0
05/31/16	0.94	1711.6	1.87	1709.2	3.75	1710.0	0.47	1705.1	0.94	1707.2	3.75	1719.0	0.94	1719.7	1.87	1709.6	0.20	1720.4	7.50	1710.0
Monthly Average	0.65	1716.7	2.32	1709.2	3.75	1710.0	0.47	1709.0	0.79	1710.1	3.75	1718.9	0.94	1714.7	2.26	1715.4	0.63	1716.8	7.47	1710.6
Analytical ¹	Conc (mg/L)	Date	Conc (mg/L)	Date	Conc (mg/L)	Date	Conc (mg/L)	Date	Conc (mg/L)	Date	Conc (mg/L)	Date	Conc (mg/L)	Date	Conc (mg/L)	Date	Conc (mg/L)	Date	Conc (mg/L)	Date
Perchlorate	1400	5/2/2016	1100	5/3/2016	550	5/3/2016	1900	5/2/2016	1900	5/2/2016	900	5/24/2016	1200	5/2/2016	1200	5/3/2016	1400	5/3/2016	330	5/24/2016
Hexavalent Chromium	19.5	5/2/2016	0.5	5/3/2016	1.33	5/3/2016	20.8	5/2/2016	20.7	5/2/2016	15.7	4/8/2016 ³	16.5	5/2/2016	12	5/3/2016	0.84	5/3/2016	8.98	4/8/2016 ³
Total Chromium	21	5/2/2016	0.39	5/3/2016	1.4	5/3/2016	25	5/2/2016	25	5/2/2016	16	5/24/2016	21	5/2/2016	12	5/3/2016	1.1	5/3/2016	9.6	5/24/2016

Notes:
 Flow reported as gpm is a daily average calculated from the totalizer reading. NA = Not Available
 1: Analytical results are reported from TestAmerica.
 3: May 2016 data not available from TestAmerica at time of submission. April 2016 data are presented for calculation purposes.
 4: Flow increased on 05/16/2016.
 5: Flow increased on 05/20/2016.

Nevada Environmental Response Trust Groundwater Extraction and Treatment System Enhanced Operational Metrics																		
Date	LS #2	GWTP Effluent				GW-11 Influent				FBR Plant Influent ¹								
		Flow ² (gpm)	Flow (gpm)	TA - Cr (TR) (mg/L)	TA - Cr (VI) (mg/L)	TA - ClO ₄ (mg/L)	Flow (gpm)	Cr (TR) (mg/L)	Cr (VI) (mg/L)	ClO ₄ (mg/L)	Flow (gpm)	TA - ClO ₄ (mg/L)	ETI - ClO ₄ (mg/L)	TA - ClO ₃ (mg/L)	TA - SO ₄ (mg/L)	TA - NO ₃ - N (mg/L)	TA - Cr (TR) (mg/L)	TA - Cr (VI) (mg/L)
05/01/16	770	53				872				926		78						
05/02/16	736	61				850				902		96						
05/03/16	607	63				842				892		103				9.6	0.044	0.027
05/04/16	790	63				855	0.090	0.081	72	890		104	230	1,400				
05/05/16	792	63	0.14	ND	700	847				887		95						
05/06/16	890	63				856				871		96						
05/07/16	910	63				849				858	95	92						
05/08/16	729	63				849				849		93						
05/09/16	779	63				850				899		89				7.3	0.037	0.025
05/10/16	785	66				852				877		92						
05/11/16	811	68				847				875		108						
05/12/16	813	64	0.27	ND	690	853				874		105						
05/13/16	817	63				825				828		107						
05/14/16	806	63				849				861	120	107						
05/15/16	823	64				849				872		104						
05/16/16	860	70				851				824		110				9.7	0.039	0.026
05/17/16	867	72				857				846		111						
05/18/16	796	73				848				850		109						
05/19/16	857	72	0.18	0.020	750	846				864		108						
05/20/16	858	71				839				881		102						
05/21/16	867	69				840				849	96	105						
05/22/16	878	64				842				868		92						
05/23/16	847	68				839				853		104				11	0.044	0.027
05/24/16	856	67				840				857		101						
05/25/16	862	69				841				873		90						
05/26/16	846	71	0.16	ND	690	898				927		97						
05/27/16	828	70				898				940		61						
05/28/16	819	71				891				939	82	60						
05/29/16	831	70				893				936		63						
05/30/16	815	72				891				924		66						
05/31/16	809	71				890				920		67				7.3	0.048	0.042
Monthly Average	818	67	0.19	0.005	708	856	0.090	0.081	72	881	98	94	230	1400	9.0	0.042	0.029	

Notes:
 Flow reported as gpm is a daily average calculated from the totalizer reading.
 ND = Not detected above laboratory method detection limit (ClO₄ = 0.5 ug/L; ClO₃ = 10 ug/L; NO₃-N = 0.055 mg/L, CR(VI) = 0.25 ug/L); NA = Not Available, sample result not reported.
 1: ETI = Envirogen internal process control data, TA = TestAmerica data.

Table 4 - Treatment Plant Operational Metrics

Nevada Environmental Response Trust Groundwater Extraction and Treatment System Enhanced Operational Metrics															
Date	1st Stage FBR Influent			2nd Stage FBR Influent			FBR Plant Effluent ¹								
	Flow (gpm)	pH (s.u.)	ORP (mV)	Flow (gpm)	pH (s.u.)	ORP (mV)	Flow (gpm)	TA - ClO ₂ (mg/L)	ETI - ClO ₂ (mg/L)	TA - ClO ₃ (mg/L)	TA - Cr (TR) (mg/L)	TA - Cr (VI) (mg/L)	TA - SO ₄ (mg/L)	TA - NO ₃ - N (mg/L)	ETI - Turbidity (NTU)
05/01/16	937	6.8	-394	890	6.4	-385	960		ND						30
05/02/16	942	6.9	-400	674	6.4	-409	987		ND		0.019	ND		0.75	52
05/03/16	930	6.5	-365	897	6.3	-380	980		ND						12
05/04/16	945	6.5	-369	899	6.2	-369	976		ND	ND			1,400		6
05/05/16	927	6.6	-380	904	6.3	-368	970		ND						12
05/06/16	927	6.7	-386	806	6.3	-364	953		ND						18
05/07/16	907	6.8	-389	910	6.4	-361	917	ND	ND						32
05/08/16	882	6.8	-391	891	6.4	-367	914		ND						30
05/09/16	937	6.4	-371	850	6.2	-354	965		ND		0.0078	ND		ND	6
05/10/16	938	6.3	-352	901	6.2	-370	978		ND						8
05/11/16	939	6.2	-330	876	6.3	-377	982		ND						17
05/12/16	939	6.2	-352	695	6.2	-366	988		ND						19
05/13/16	923	6.4	-366	874	6.1	-360	970		ND						20
05/14/16	937	6.5	-376	797	6.2	-361	941	ND	ND						12
05/15/16	939	6.6	-386	890	6.2	-362	983		ND						15
05/16/16	839	6.4	-373	898	6.2	-321	938		ND					ND	19
05/17/16	916	6.5	-374	896	6.3	-367	870		ND		0.011	ND		ND	32
05/18/16	893	6.5	-381	905	6.3	-374	966		ND						22
05/19/16	936	6.4	-374	872	6.3	-371	994		ND						25
05/20/16	953	6.4	-364	900	6.3	-372	1003		ND						14
05/21/16	917	6.5	-361	894	6.3	-369	974	ND	ND						8
05/22/16	937	6.6	-371	776	6.4	-375	997		ND						19
05/23/16	925	6.5	-368	779	6.4	-372	990		ND		0.011	ND		ND	5
05/24/16	947	6.6	-384	888	6.4	-372	987		ND						4
05/25/16	938	6.6	-389	892	6.4	-384	1014		ND						39
05/26/16	940	6.9	-404	914	6.4	-387	1002		ND						33
05/27/16	938	6.7	-400	891	6.4	-392	1011		ND						19
05/28/16	936	6.6	-398	890	6.4	-388	1010	ND	ND						25
05/29/16	936	6.6	-354	885	6.4	-390	1004		ND						29
05/30/16	926	6.7	-402	677	6.4	-390	999		ND						21
05/31/16	916	6.7	-406	875	6.4	-389	1022		ND		0.0063	ND		0.64	18
Monthly Average	927	6.6	-378	858	6.3	-373	976	ND	ND	ND	0.011	ND	1400	0.695	20

Notes:

Flow reported as gpm is a daily average calculated from the totalizer reading.

ND = Not detected above laboratory method detection limit (ClO₂ = 0.5 ug/L; ClO₃ = 10 ug/L; NO₃-N = 0.055 mg/L, CR(VI) = 0.25 ug/L); NA = Not Available, sample result not reported.

1: ETI = Envirogen internal process control data, TA = TestAmerica data.

GW-11 Level Monitoring		
Date	Field Measurement (ft)	Volume (MG)
5/10/2016	23.8	44.9
5/25/2016	24.5	43.9

GW-11 Leak Detection Monitoring				
Date	Amount Pumped ¹ (gallons)			
	NW Corner	NE Corner	SW Corner	SE Corner
5/13/2016	0	529	0	0
5/27/2016	0	1163	0	0

GW-11 Composite Sample ²		
Analytes	Concentration	Units
Perchlorate	79	mg/L
Chlorate	200	mg/L
Ammonia as N	1.80	mg/L
Total Phosphorus	ND	mg/L
Total Dissolved Solids (TDS)	5500	mg/L
Total Suspended Solids (TSS)	8.0	mg/L
pH	8.01	s.u.
Calcium	370	mg/L
Iron	0.37	mg/L
Chromium (total)	0.047	mg/L
Chromium VI	0.018	mg/L
Chloride	1700	mg/L
Nitrate as N	NA ³	mg/L
Sulfate	1500	mg/L

Notes:

ND = Not detected above laboratory method detection limit (NH₃-N= 0.1 mg/L; Total P = 0.025 ug/L; Cr(VI) = 0.25 ug/L).

1: Pumping occurs over three consecutive days. The total amount pumped over the three day period is listed with the last day pumping occurred.

2: Corner Composite Sample collected quarterly, most recent sampling results presented. Sampled on: April 26, 2016 by Envirogen.

3: No value reported from TestAmerica for the April 26, 2016 sample.

Nevada Environmental Response Trust Groundwater Extraction and Treatment System Enhanced Operational Metrics						
Date	Flow ¹ (gpm)	FBR Influent Concentration			Influent Function Load ² (lbs/day)	6 Month Rolling Average (lbs/day)
		ClO ₄ (mg/L)	NO ₃ as N (mg/L)	ClO ₃ (mg/L)		
June 2015	824	108	6.0	170	532	554
July 2015	857	100	5.0	180	547	555
Aug 2015	891	87	6.0	160	516	518
Sep 2015	785	103	9.0	180	540	534
Oct 2015	950	86	6.0	180	587	542
Nov 2015	927	82	6.6	140	496	536
Dec 2015	919	76	9.0	160	537	537
Jan 2016	892	85	9.0	160	542	536
Feb 2016	930	93	8.8	300	846	591
Mar 2016	960	84	9.0	160	581	598
April 2016	944	84	9.0	160	572	595
May 2016	976	98	9.0	230	760	639

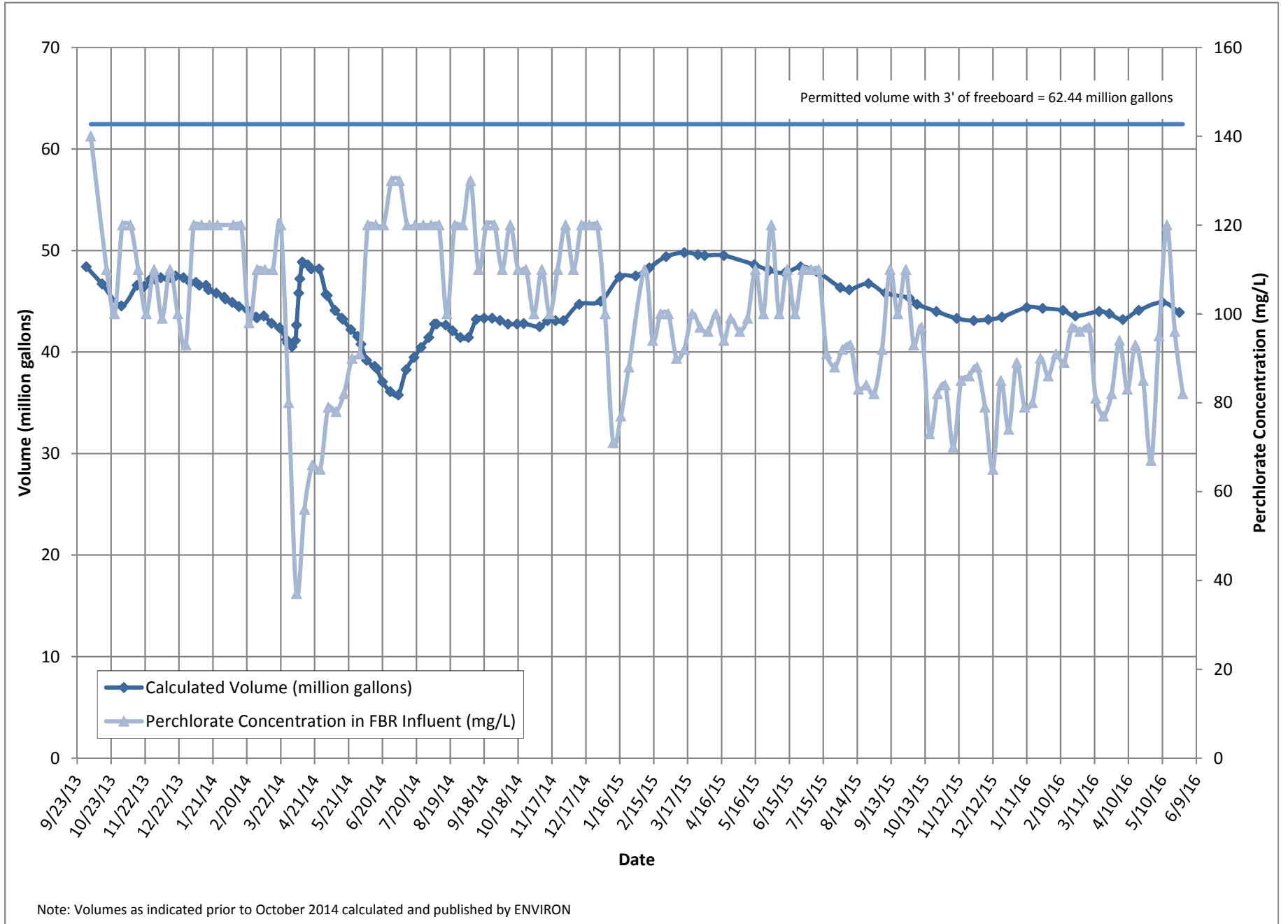
Notes:

Concentrations and flow are presented as monthly average.

1: Flow used in loading calculation is average monthly FBR effluent flow to be consistent with historical loading calculations.

2: FBR loading calculated as $[(0.9 \times \text{NO}_3 \text{ as N} + 0.17 \times \text{ClO}_3 + 0.18 \times \text{ClO}_4) \times \text{Flow} \times 1440 / 1000000 \times 8.34]$.

Figure 1 - GW-11 Pond Volume and Perchlorate Concentration



Note: Volumes as indicated prior to October 2014 calculated and published by ENVIRON

Figure 2 - FBR Equivalent Loading Calculation

