

Table 1 - Seep Well Field (SWF) Operational Metrics

Nevada Environmental Response Trust Groundwater Extraction and Treatment System Enhanced Operational Metrics																				
Date	LS #1 Flow (gpm)	East Well (PC-116R)		Center Well (PC99R3)		West Well (PC-115R)		PC 117		PC 118		PC 119		PC 120		PC 121		PC 133		
		Flow (gpm)	Water Elevation (ft amsl)	Flow (gpm)	Water Elevation (ft amsl)	Flow (gpm)	Water Elevation (ft amsl)	Flow (gpm)	Water Elevation (ft amsl)	Flow (gpm)	Water Elevation (ft amsl)	Flow (gpm)	Water Elevation (ft amsl)	Flow (gpm)	Water Elevation (ft amsl)	Flow (gpm)	Water Elevation (ft amsl)	Flow (gpm)	Water Elevation (ft amsl)	
02/01/16	469	175	1539.2	59	1541.1	117	1544.2	116	1541.4	58	1547.3	58	1548.8	0	1550.8	0	1550.5	9	1520.0	
02/02/16	469	175	1539.2	58	1541.4	117	1544.2	116	1541.3	58	1547.3	59	1548.8	0	1550.8	0	1550.5	9	1520.0	
02/03/16	467	176	1539.2	59	1541.0	117	1544.2	116	1541.3	59	1547.2	58	1548.8	0	1550.8	0	1550.5	10	1520.0	
02/04/16	469	145	1539.2	59	1541.3	118	1544.2	116	1541.3	59	1547.2	59	1548.8	0	1550.7	0	1550.5	10	1520.0	
02/05/16	466	117	1539.1	58	1541.1	117	1544.2	116	1541.3	58	1547.2	58	1548.8	0	1550.7	0	1550.5	10	1520.0	
02/06/16	469	116	1539.1	59	1541.0	118	1544.2	116	1541.3	59	1547.2	59	1548.8	0	1550.7	0	1550.5	10	1520.0	
02/07/16	469	117	1539.1	58	1541.2	113	1544.1	116	1541.3	58	1547.2	58	1548.8	0	1550.7	0	1550.5	10	1520.0	
02/08/16	469	117	1539.1	59	1541.3	110	1544.2	116	1541.3	59	1547.2	59	1548.8	0	1550.7	0	1550.5	10	1520.0	
02/09/16	513	117	1539.1	59	1541.2	117	1544.2	116	1541.2	59	1547.2	59	1548.7	0	1550.7	0	1550.5	10	1520.0	
02/10/16	469	117	1539.1	59	1541.0	117	1544.1	116	1541.2	59	1547.1	59	1548.7	0	1550.7	0	1550.4	10	1520.0	
02/11/16	469	117	1539.0	58	1541.2	117	1544.1	116	1541.2	58	1547.1	58	1548.7	0	1550.6	0	1550.4	10	1520.0	
02/12/16	494	118	1539.0	59	1541.2	117	1544.1	116	1541.2	59	1547.1	59	1548.7	0	1550.6	2	1550.4	10	1520.0	
02/13/16	469	117	1539.0	59	1541.1	117	1544.0	116	1541.2	59	1547.1	59	1548.7	0	1550.6	0	1550.4	10	1520.0	
02/14/16	469	118	1539.0	58	1541.1	118	1544.0	116	1541.1	59	1547.1	58	1548.6	0	1550.6	0	1550.3	10	1520.0	
02/15/16	469	117	1539.0	59	1541.0	117	1544.0	116	1541.1	59	1547.1	59	1548.6	0	1550.6	0	1550.3	10	1520.0	
02/16/16	491	117	1538.9	59	1541.4	117	1544.0	116	1541.1	59	1547.0	59	1548.6	0	1550.6	0	1550.3	10	1520.0	
02/17/16	339	79	1538.9	39	1541.1	79	1544.0	83	1541.1	39	1547.0	40	1548.6	0	1550.6	0	1550.3	10	1520.0	
02/18/16	468	117	1539.5	59	1541.7	117	1544.2	116	1541.4	58	1547.3	58	1548.8	0	1550.7	0	1550.5	10	1520.0	
02/19/16	487	117	1539.3	58	1541.7	116	1544.1	115	1541.3	58	1547.1	58	1548.7	0	1550.6	0	1550.4	10	1520.0	
02/20/16	469	117	1539.2	59	1541.2	107	1544.0	115	1541.2	59	1547.1	59	1548.6	0	1550.5	0	1550.3	10	1520.0	
02/21/16	469	117	1539.1	59	1541.1	117	1544.0	116	1541.2	59	1547.0	59	1548.6	0	1550.5	0	1550.3	10	1520.0	
02/22/16	468	117	1539.1	59	1541.0	117	1544.0	116	1541.2	59	1547.0	59	1548.6	0	1550.5	0	1550.3	10	1520.0	
02/23/16	469	117	1539.0	58	1541.2	117	1543.9	116	1541.1	58	1547.0	58	1548.5	0	1550.5	0	1550.2	10	1520.0	
02/24/16	469	118	1539.0	58	1541.2	118	1543.9	116	1541.1	58	1547.0	58	1548.5	0	1550.4	0	1550.2	10	1520.0	
02/25/16	496	116	1538.9	58	1541.2	115	1543.9	114	1541.1	58	1546.9	58	1548.5	0	1550.4	0	1550.2	10	1520.0	
02/26/16	469	117	1538.9	59	1541.1	117	1543.9	116	1541.1	59	1547.0	59	1548.5	0	1550.4	0	1550.2	10	1520.0	
02/27/16	469	117	1538.9	59	1541.0	117	1543.9	115	1541.1	59	1546.9	59	1548.5	0	1550.4	0	1550.1	10	1520.0	
02/28/16	469	117	1538.9	59	1541.1	117	1543.8	116	1541.0	59	1546.9	59	1548.4	0	1550.4	0	1550.1	10	1520.0	
02/29/16	469	117	1538.9	58	1541.1	117	1543.8	115	1541.0	58	1546.9	58	1548.4	0	1550.4	0	1550.1	10	1520.0	
Monthly Average	469	123	1539.1	58	1541.2	115	1544.0	115	1541.2	58	1547.1	58	1548.7	0	1550.6	0	1550.4	10	1520.0	
Analytical ¹	Conc (mg/L)		Date		Conc (mg/L)		Date		Conc (mg/L)		Date		Conc (mg/L)		Date		Conc (mg/L)		Date	
Perchlorate	16		2/5/2016		18		2/5/2016		14		2/5/2016		8.7		2/5/2016		4.1		2/5/2016	
Hexavalent Chromium	0.0031		2/5/2016		0.0052		2/5/2016		ND		2/5/2016		0.0049		2/5/2016		ND		2/5/2016	
Total Chromium	0.0031		2/5/2016		0.0052		2/5/2016		ND		2/5/2016		0.0049		2/5/2016		ND		2/5/2016	

Notes:
 Flow reported as gpm is a daily average calculated from the totalizer reading.
 NA= Not Available; ND = Not detected above laboratory method detection limit (ClO₂ = 0.5 ug/L; ClO₃ = 10 ug/L; NO₃-N= 0.055 mg/L, CR(VI) = 0.25 ug/L).
 1: Analytical results are reported from TestAmerica.
 2: Following contractual amendment agreements, ETI will begin collecting monthly hexavalent chromium samples.

Table 2- Athens Well Field (AWF) Operational Metrics

Nevada Environmental Response Trust Groundwater Extraction and Treatment System Enhanced Operational Metrics																								
Date	LS #3 Flow (gpm)	ART 1A/1B		ART 2A/2B		ART 3A/3B		ART 4A/4B		ART 6/9		ART 6/9		ART 7A/7B		ART 8A/8B		PC-150						
		Flow (gpm)	Water Elevation (ft amsl)	Flow (gpm)	Water Elevation (ft amsl)	Flow (gpm)	Water Elevation (ft amsl)	Flow (gpm)	Water Elevation (ft amsl)	Flow (gpm)	Water Elevation (ft amsl)	Flow (gpm)	Water Elevation (ft amsl)	Flow (gpm)	Water Elevation (ft amsl)	Flow (gpm)	Water Elevation (ft amsl)	Flow (gpm)	Water Elevation (ft amsl)					
02/01/16	234	0	1591.6	59	1590.9	58	1587.6	7	1605.0	59	1576.6	16	1578.0	59	1587.0	3	1583.9							
02/02/16	234	0	1591.5	58	1590.8	58	1587.5	8	1605.0	58	1576.6	15	1578.0	58	1586.9	4	1584.9							
02/03/16	234	0	1591.5	59	1590.8	57	1587.5	7	1605.0	59	1576.6	16	1578.0	59	1586.9	3	1583.8							
02/04/16	235	0	1591.5	58	1590.8	58	1587.5	8	1605.0	58	1576.5	15	1578.0	58	1586.9	4	1584.2							
02/05/16	228	0	1591.5	35	1590.8	57	1587.5	7	1605.0	58	1576.5	14	1578.0	59	1586.9	4	1584.3							
02/06/16	234	0	1591.8	29	1591.4	58	1587.7	6	1605.0	59	1576.6	14	1578.0	58	1587.2	4	1584.7							
02/07/16	234	0	1591.8	29	1591.5	58	1587.7	7	1605.0	59	1576.6	13	1578.0	59	1587.2	3	1584.1							
02/08/16	234	0	1591.8	29	1591.5	58	1587.7	8	1605.0	59	1576.6	13	1578.0	59	1587.3	4	1585.1							
02/09/16	230	0	1591.9	30	1591.5	58	1587.8	7	1605.0	58	1576.6	12	1578.0	59	1587.3	3	1584.8							
02/10/16	234	0	1591.9	48	1591.5	57	1587.8	7	1575.0	59	1576.5	14	1578.0	59	1587.3	4	1584.2							
02/11/16	234	0	1591.6	59	1591.3	57	1587.7	8	1575.0	59	1576.6	13	1578.0	59	1587.1	3	1584.4							
02/12/16	235	0	1591.5	59	1591.2	58	1587.6	7	1575.0	59	1576.5	13	1578.0	59	1587.0	4	1585.1							
02/13/16	234	0	1591.5	59	1591.1	57	1587.5	7	1575.0	59	1576.6	14	1578.0	59	1575.0	3	1583.8							
02/14/16	235	0	1591.5	59	1591.1	58	1587.5	8	1575.0	59	1576.6	15	1578.0	59	1586.9	3	1584.0							
02/15/16	234	0	1591.4	59	1591.1	57	1587.5	8	1575.0	59	1576.6	15	1578.0	59	1586.9	3	1584.8							
02/16/16	233	0	1591.4	59	1590.7	57	1587.5	7	1575.0	59	1576.6	14	1578.0	59	1586.8	3	1584.9							
02/17/16	158	0	1591.4	39	1590.7	38	1587.5	7	1575.0	39	1576.6	15	1578.0	39	1586.8	3	1585.0							
02/18/16	235	0	1591.6	59	1590.9	58	1587.6	11	1575.0	58	1576.6	16	1578.0	58	1587.1	2	1584.8							
02/19/16	229	0	1591.5	58	1590.7	57	1587.5	11	1575.0	58	1576.6	15	1578.0	58	1586.9	3	1584.0							
02/20/16	235	0	1591.4	59	1590.7	58	1587.4	10	1575.0	59	1576.5	15	1578.0	59	1586.9	4	1584.7							
02/21/16	234	0	1591.4	58	1590.6	57	1587.4	10	1575.0	59	1576.5	15	1578.0	58	1586.8	4	1584.1							
02/22/16	234	0	1591.4	59	1590.6	57	1587.4	8	1575.0	59	1576.6	15	1578.0	59	1586.8	3	1584.7							
02/23/16	235	0	1591.4	59	1590.6	58	1587.4	8	1575.0	58	1576.6	15	1578.0	58	1586.8	4	1584.5							
02/24/16	234	0	1591.3	58	1590.6	57	1587.4	8	1575.0	58	1576.6	14	1578.0	59	1586.8	3	1584.5							
02/25/16	234	0	1591.3	59	1590.6	57	1587.4	7	1575.0	59	1576.6	15	1578.0	59	1586.7	3	1584.5							
02/26/16	234	0	1591.3	58	1590.6	57	1587.4	8	1575.0	59	1576.6	15	1578.0	58	1586.7	4	1585.2							
02/27/16	235	0	1591.3	59	1590.6	57	1587.4	7	1575.0	59	1576.6	15	1578.0	59	1586.7	3	1583.9							
02/28/16	234	0	1591.3	59	1590.5	57	1587.3	8	1575.0	59	1576.6	15	1578.0	59	1586.7	3	1583.9							
02/29/16	234	0	1591.3	59	1590.5	56	1587.3	8	1575.0	58	1576.6	15	1578.0	58	1586.7	4	1584.5							
Monthly Average	231	0	1591.5	53	1590.9	57	1587.5	8	1584.3	58	1576.6	14	1578.0	58	1586.5	3	1584.5							
Analytical ¹	Conc (mg/L)		Date	Conc (mg/L)		Date	Conc (mg/L)		Date	Conc (mg/L) ²		Date	Conc (mg/L)		Date	Conc (mg/L)		Date						
Perchlorate	20		2/5/2016	23		2/5/2016	200		2/5/2016	240		2/5/2016	120		2/5/2016	100		2/5/2016	210		2/5/2016			
Hexavalent Chromium	Future Metric - Enhanced Operations (to be collected by ETI) ³																							
Total Chromium	0.014		2/5/2016	0.0081		2/5/2016	0.27		2/5/2016	0.44		2/5/2016	0.81		2/5/2016	0.6		2/5/2016	0.094		2/5/2016	0.35		2/5/2016

Notes:

Flow reported as gpm is a daily average calculated from the totalizer reading. NA = Not Available.

1: Analytical results are reported from TestAmerica.

2: Concentrations reported for ART-9.

3: Following contractual amendment agreements, ETI will begin collecting monthly hexavalent chromium samples.

Table 3 - Interceptor Well Field (IWF) Operational Metrics

Nevada Environmental Response Trust Groundwater Extraction and Treatment System Enhanced Operational Metrics																				
Date	I-AR		I-AA		I-AB		I-AC		I-AD		I-B		I-C		I-D		I-E		I-F	
	Flow (gpm)	Water Elevation (ft amsl)	Flow (gpm)	Water Elevation (ft amsl)	Flow (gpm)	Water Elevation (ft amsl)	Flow (gpm)	Water Elevation (ft amsl)	Flow (gpm)	Water Elevation (ft amsl)	Flow (gpm)	Water Elevation (ft amsl)	Flow (gpm)	Water Elevation (ft amsl)	Flow (gpm)	Water Elevation (ft amsl)	Flow (gpm)	Water Elevation (ft amsl)	Flow (gpm)	Water Elevation (ft amsl)
02/01/16	0.23	1727.6	0.72	1715.8	0.00	1721.4	0.00	1723.5	0.00	1725.0	0.85	1709.6	1.88	1721.4	1.41	1722.6	0.25	1716.7	3.75	1720.1
02/02/16	0.15	1727.6	0.51	1715.8	0.00	1721.4	0.00	1723.4	0.00	1724.9	0.77	1709.7	1.81	1721.5	1.08	1722.7	0.23	1716.7	3.62	1720.0
02/03/16	0.19	1728.1	0.46	1717.7	0.00	1721.3	0.00	1723.3	0.00	1724.9	0.73	1709.6	1.83	1721.5	0.95	1722.7	0.23	1716.7	3.65	1720.0
02/04/16	0.23	1728.1	0.47	1718.4	0.00	1721.3	0.00	1723.3	0.00	1724.9	0.73	1709.5	1.86	1721.7	0.93	1722.8	0.23	1716.8	3.72	1720.1
02/05/16	0.23	1726.0	0.47	1718.4	0.00	1721.3	0.00	1723.3	0.00	1724.9	0.74	1709.4	1.88	1721.8	0.94	1722.8	0.23	1716.8	3.75	1720.1
02/06/16	0.23	1725.6	0.47	1718.3	0.00	1721.3	0.00	1723.4	0.00	1724.9	0.73	1709.4	1.87	1721.8	0.94	1722.9	0.23	1716.9	3.75	1720.2
02/07/16	0.23	1725.5	0.47	1718.2	0.00	1721.3	0.00	1723.4	0.00	1724.9	0.74	1709.3	1.88	1721.8	0.94	1722.9	0.23	1716.9	3.75	1720.2
02/08/16	0.23	1725.5	0.47	1718.1	0.00	1721.3	0.00	1723.3	0.00	1724.9	0.73	1709.3	1.88	1721.9	0.94	1722.9	0.23	1716.9	3.75	1720.2
02/09/16	0.23	1725.6	0.47	1718.0	0.00	1721.3	0.00	1723.4	0.00	1724.9	0.73	1709.4	1.87	1721.9	0.94	1723.0	0.23	1717.0	3.75	1720.3
02/10/16	0.24	1725.8	0.47	1718.0	0.00	1721.3	0.00	1723.3	0.00	1724.9	0.03	1709.4	1.87	1721.9	0.94	1723.0	0.23	1717.0	3.73	1720.2
02/11/16	0.23	1726.6	0.47	1718.6	0.00	1721.5	0.00	1723.3	0.00	1724.9	0.73	1722.2	1.87	1722.0	0.94	1723.0	0.23	1717.0	3.75	1720.3
02/12/16	0.23	1726.7	0.47	1718.5	0.00	1721.4	0.00	1723.3	0.00	1724.9	0.75	1709.6	1.87	1722.1	0.94	1723.0	0.23	1717.0	3.75	1720.3
02/13/16	0.23	1726.8	0.47	1718.4	0.00	1721.4	0.00	1723.3	0.00	1724.9	0.75	1723.1	1.88	1717.1	0.94	1720.4	0.23	1712.8	3.75	1709.4
02/14/16	0.23	1726.8	0.47	1718.3	0.00	1721.4	0.00	1723.3	0.00	1724.9	0.76	1709.3	1.87	1722.2	0.94	1723.1	0.23	1717.1	3.75	1720.4
02/15/16	0.23	1726.9	0.47	1718.2	0.00	1721.4	0.00	1723.3	0.00	1724.9	0.76	1709.3	1.88	1722.2	0.94	1723.1	0.23	1717.2	3.75	1720.4
02/16/16	0.23	1727.0	0.47	1718.1	0.00	1721.4	0.00	1723.3	0.00	1724.9	0.78	1709.4	1.87	1722.3	0.94	1723.2	0.23	1717.2	3.75	1720.5
02/17/16	0.23	1727.0	0.47	1718.1	0.00	1721.4	0.00	1723.4	0.00	1724.9	0.77	1709.5	1.87	1722.3	0.94	1723.2	0.23	1717.2	3.75	1720.5
02/18/16	0.24	1727.1	0.47	1718.1	0.00	1721.4	0.00	1723.4	0.00	1724.9	0.77	1709.7	1.88	1722.3	0.94	1723.2	0.24	1717.3	3.76	1720.6
02/19/16	0.23	1727.1	0.47	1718.1	0.00	1721.4	0.00	1723.3	0.00	1724.9	0.77	1709.7	1.86	1722.3	0.93	1723.3	0.23	1717.3	3.74	1720.6
02/20/16	0.23	1727.2	0.47	1718.0	0.00	1721.4	0.00	1723.3	0.00	1724.9	0.79	1709.4	1.88	1722.4	0.94	1723.3	0.23	1717.3	3.75	1720.6
02/21/16	0.23	1727.2	0.47	1718.0	0.00	1721.4	0.00	1723.3	0.00	1724.9	0.79	1709.7	1.88	1722.4	0.94	1723.3	0.43	1717.4	3.75	1720.7
02/22/16	0.24	1727.3	0.47	1718.0	0.00	1721.4	0.00	1723.3	0.00	1724.9	0.80	1709.7	1.88	1722.4	0.94	1723.3	0.47	1717.4	3.75	1720.7
02/23/16	0.23	1727.3	0.47	1718.1	0.00	1721.4	0.00	1723.3	0.00	1724.9	0.83	1709.5	1.87	1722.5	0.94	1723.4	0.47	1717.4	3.75	1720.7
02/24/16	0.23	1727.3	0.47	1718.1	0.00	1721.5	0.00	1723.3	0.00	1724.9	0.83	1709.5	1.88	1722.5	0.94	1723.4	0.47	1717.5	3.75	1720.8
02/25/16	0.23	1727.3	0.47	1718.1	0.00	1721.5	0.00	1723.3	0.00	1724.9	0.85	1709.8	1.87	1722.5	0.94	1723.4	0.47	1717.5	3.75	1720.8
02/26/16	0.23	1727.4	0.47	1718.1	0.00	1721.5	0.00	1723.3	0.00	1724.9	0.86	1709.3	1.88	1722.6	0.94	1723.5	0.47	1717.6	3.75	1720.9
02/27/16	0.23	1727.5	0.47	1718.1	0.00	1721.5	0.00	1723.3	0.00	1724.9	0.86	1709.6	1.87	1722.6	0.94	1723.5	0.47	1717.6	3.75	1720.9
02/28/16	0.23	1727.5	0.47	1718.1	0.00	1721.5	0.00	1723.3	0.00	1724.9	0.86	1709.3	1.87	1722.7	0.94	1723.5	0.47	1717.6	3.75	1720.9
02/29/16	0.23	1727.6	0.47	1718.1	0.00	1721.5	0.00	1723.3	0.00	1724.9	0.86	1709.3	1.88	1722.7	0.94	1723.5	0.47	1717.7	3.75	1721.0
Monthly Average	0.23	1726.9	0.48	1718.0	0.00	1721.4	0.00	1723.3	0.00	1724.9	0.76	1710.4	1.87	1722.0	0.96	1723.0	0.31	1717.0	3.74	1720.1
Analytical ¹	Conc (mg/L)	Date	Conc (mg/L)	Date	Conc (mg/L)	Date	Conc (mg/L)	Date	Conc (mg/L)	Date	Conc (mg/L)	Date	Conc (mg/L)	Date	Conc (mg/L)	Date	Conc (mg/L)	Date	Conc (mg/L)	Date
Perchlorate	1900	2/9/2016	96	2/9/2016	87	2/9/2016	110	2/10/2016	110	2/10/2016	680	2/9/2016	650	2/9/2016	720	2/9/2016	680	2/9/2016	980	2/9/2016
Hexavalent Chromium	Future Metric - Enhanced Operations (to be collected by ETI) ²																			
Total Chromium	0.17	2/9/2016	0.072	2/9/2016	0.029	2/9/2016	1.0	2/10/2016	0.75	2/10/2016	0.15	2/9/2016	4.0	2/9/2016	7.3	2/9/2016	8.0	2/9/2016	16	2/9/2016

Notes:
 Flow reported as gpm is a daily average calculated from the totalizer reading. NA=Not Available.
 1: Analytical results are reported from TestAmerica.
 2: Following contractual amendment agreements, ETI will begin collecting monthly hexavalent chromium samples.

Table 3 - Interceptor Well Field (IWF) Operational Metrics

Nevada Environmental Response Trust Groundwater Extraction and Treatment System Enhanced Operational Metrics																				
Date	I-G		I-H		I-J		I-I		I-K		I-L		I-M		I-N		I-P			
	Flow (gpm)	Water Elevation (ft amsl)	Flow (gpm)	Water Elevation (ft amsl)	Flow (gpm)	Water Elevation (ft amsl)	Flow (gpm)	Water Elevation (ft amsl)	Flow (gpm)	Water Elevation (ft amsl)	Flow (gpm)	Water Elevation (ft amsl)	Flow (gpm)	Water Elevation (ft amsl)	Flow (gpm)	Water Elevation (ft amsl)	Flow (gpm)	Water Elevation (ft amsl)		
02/01/16	0.13	1712.6	0.94	1709.4	5.62	1720.8	5.68	1707.0	2.81	1714.5	1.87	1720.0	1.87	1721.2	2.81	1725.4	0.47	1720.8	1.87	1709.7
02/02/16	0.13	1713.3	0.91	1709.4	5.45	1721.1	6.88	1707.0	2.70	1714.7	1.82	1720.2	1.82	1721.3	2.72	1725.4	0.28	1720.8	1.87	1709.7
02/03/16	0.12	1714.8	0.91	1709.4	5.48	1721.4	7.31	1707.0	2.73	1716.6	1.13	1719.8	1.83	1721.4	2.74	1725.6	0.23	1720.9	1.86	1709.8
02/04/16	0.12	1714.2	0.93	1709.4	5.60	1721.2	7.46	1707.0	2.80	1717.0	0.93	1720.4	1.87	1721.5	2.80	1725.8	0.23	1721.0	1.88	1709.7
02/05/16	0.11	1712.0	0.94	1709.4	5.63	1721.0	7.50	1707.0	2.81	1717.1	0.94	1720.5	1.88	1721.6	2.81	1725.7	0.25	1720.9	1.91	1709.7
02/06/16	0.12	1712.8	0.94	1709.4	5.62	1720.9	7.50	1707.0	2.81	1717.2	0.94	1720.6	1.87	1721.7	2.81	1725.8	0.24	1720.9	1.92	1709.7
02/07/16	0.12	1713.1	0.94	1709.4	5.62	1720.9	10.73	1707.0	2.81	1717.1	0.94	1720.5	1.88	1721.7	2.81	1725.8	0.24	1720.9	1.92	1709.7
02/08/16	0.12	1712.7	0.94	1709.4	5.63	1720.8	11.25	1707.0	2.81	1717.1	0.94	1720.5	1.88	1721.7	2.81	1725.9	0.47	1720.9	1.91	1709.7
02/09/16	0.14	1711.5	0.94	1709.4	5.63	1720.9	11.25	1707.0	2.81	1717.2	0.94	1720.6	1.87	1721.7	2.81	1725.9	0.47	1720.9	1.88	1709.7
02/10/16	0.12	1712.3	0.93	1709.4	5.63	1720.8	11.25	1707.0	2.81	1717.2	0.94	1720.6	1.87	1721.7	2.81	1725.9	0.47	1720.9	1.88	1709.7
02/11/16	0.12	1712.7	0.94	1709.4	5.62	1720.8	11.25	1707.0	2.81	1717.2	0.94	1721.2	1.87	1721.9	2.81	1725.9	0.47	1720.9	1.88	1709.8
02/12/16	0.17	1715.9	0.94	1709.5	5.62	1720.8	11.25	1707.0	2.81	1717.2	0.94	1721.1	1.87	1721.9	2.81	1725.9	0.47	1720.9	1.87	1709.8
02/13/16	0.12	1712.8	0.94	1709.4	5.63	1720.8	11.25	1707.0	2.81	1717.2	0.94	1721.2	1.88	1722.0	2.81	1725.9	0.47	1720.9	1.88	1709.8
02/14/16	0.16	1713.9	0.94	1709.4	5.62	1720.8	11.24	1707.0	2.81	1717.2	0.94	1721.3	1.87	1722.0	2.81	1726.0	0.47	1720.9	1.88	1709.8
02/15/16	0.17	1710.9	0.94	1709.4	4.75	1720.8	11.25	1707.0	2.81	1717.2	0.94	1721.3	1.88	1722.0	2.81	1726.0	0.47	1720.9	1.88	1709.8
02/16/16	0.18	1713.0	0.94	1709.5	3.75	1720.8	11.25	1707.0	2.81	1717.2	0.94	1721.4	1.87	1722.1	2.81	1726.1	0.47	1720.9	1.89	1709.8
02/17/16	0.18	1710.9	0.94	1709.4	3.75	1720.9	11.26	1707.0	2.81	1717.3	0.94	1721.3	1.88	1722.1	2.46	1726.1	0.47	1720.9	1.92	1709.8
02/18/16	0.18	1710.9	0.94	1709.4	3.76	1720.9	11.28	1707.0	2.82	1717.3	0.94	1721.3	1.88	1722.1	1.88	1726.1	0.47	1720.9	1.92	1709.8
02/19/16	0.18	1710.9	0.93	1709.4	3.74	1720.9	11.21	1707.0	2.80	1717.3	0.93	1721.3	1.87	1722.2	1.87	1726.1	0.47	1720.9	1.91	1709.8
02/20/16	0.17	1711.0	0.94	1709.5	3.75	1720.9	11.26	1707.0	2.81	1717.3	0.94	1721.3	1.88	1722.2	1.88	1726.1	0.47	1720.9	1.91	1709.8
02/21/16	0.13	1712.9	0.94	1709.5	3.75	1720.9	11.24	1707.0	2.81	1717.3	0.94	1721.4	1.88	1722.3	1.87	1726.2	0.47	1720.9	1.91	1709.8
02/22/16	0.12	1714.6	0.94	1709.6	3.75	1720.9	11.25	1707.0	2.81	1717.4	0.94	1721.4	1.88	1722.3	1.88	1726.2	0.47	1721.0	1.94	1709.8
02/23/16	0.15	1714.7	0.94	1709.4	3.75	1720.9	10.94	1707.0	2.81	1717.4	0.94	1721.5	1.88	1722.3	1.18	1726.2	0.47	1720.9	1.93	1709.8
02/24/16	0.13	1718.3	0.94	1709.5	3.75	1720.9	7.50	1707.0	2.81	1717.5	0.94	1721.6	1.87	1722.3	2.53	1726.3	0.47	1720.9	1.90	1709.8
02/25/16	0.13	1712.9	0.94	1709.9	3.75	1720.9	7.50	1707.0	2.81	1716.7	0.94	1721.6	1.87	1722.4	1.88	1726.3	0.47	1721.0	1.88	1709.8
02/26/16	0.13	1713.8	0.94	1710.4	3.75	1721.0	7.50	1707.0	2.81	1716.6	0.94	1721.6	1.88	1722.4	1.87	1726.3	0.47	1721.0	1.88	1709.8
02/27/16	0.17	1713.5	0.94	1710.8	3.75	1721.0	7.50	1707.0	2.81	1716.7	0.94	1721.7	1.87	1722.5	1.88	1726.4	0.47	1721.0	1.91	1709.8
02/28/16	0.15	1713.6	0.94	1711.0	3.75	1721.0	7.50	1707.0	2.81	1716.7	0.94	1721.7	1.87	1722.4	1.87	1726.4	0.47	1721.0	2.02	1709.8
02/29/16	0.12	1714.0	0.94	1711.2	3.75	1721.0	10.66	1707.0	2.81	1716.8	0.94	1721.7	1.88	1722.5	1.88	1726.4	0.47	1721.0	2.08	1709.8
Monthly Average	0.14	1713.1	0.94	1709.6	4.68	1720.9	9.69	1707.0	2.81	1716.9	1.01	1721.1	1.87	1722.0	2.40	1726.0	0.42	1720.9	1.91	1709.8
Analytical ¹	Conc (mg/L)	Date	Conc (mg/L)	Date	Conc (mg/L)	Date	Conc (mg/L)	Date	Conc (mg/L)	Date	Conc (mg/L)	Date	Conc (mg/L)	Date	Conc (mg/L)	Date	Conc (mg/L)	Date	Conc (mg/L)	Date
Perchlorate	1900	2/9/2016	1800	2/9/2016	120	2/10/2016	270	2/10/2016	190	2/10/2016	690	2/9/2016	730	2/9/2016	750	2/9/2016	1400	2/9/2016	1200	2/9/2016
Hexavalent Chromium									Future Metric - Enhanced Operations (to be collected by ETI) ²											
Total Chromium	23	2/9/2016	18	2/9/2016	12	2/10/2016	3.2	2/10/2016	1.9	2/10/2016	0.72	2/9/2016	11	2/9/2016	7.7	2/9/2016	19	2/9/2016	16	2/9/2016

Notes:

Flow reported as gpm is a daily average calculated from the totalizer reading. NA=Not Available.

1. Analytical results are reported from TestAmerica.

2. Following contractual amendment agreements, ETI will begin collecting monthly hexavalent chromium samples.

Table 3 - Interceptor Well Field (IWF) Operational Metrics

Nevada Environmental Response Trust Groundwater Extraction and Treatment System Enhanced Operational Metrics																				
Date	I-Q		I-R		I-S		I-T		I-U		I-V		I-W		I-X		I-Z			
	Flow (gpm)	Water Elevation (ft amsl)	Flow (gpm)	Water Elevation (ft amsl)	Flow (gpm)	Water Elevation (ft amsl)	Flow (gpm)	Water Elevation (ft amsl)	Flow (gpm)	Water Elevation (ft amsl)	Flow (gpm)	Water Elevation (ft amsl)	Flow (gpm)	Water Elevation (ft amsl)	Flow (gpm)	Water Elevation (ft amsl)	Flow (gpm)	Water Elevation (ft amsl)		
02/01/16	0.47	1718.3	2.42	1721.5	3.75	1720.9	0.35	1712.6	0.47	1715.4	3.75	1717.9	0.83	1710.0	0.89	1721.5	0.47	1720.6	7.43	1713.7
02/02/16	0.45	1718.1	2.05	1721.6	3.63	1721.2	0.34	1712.6	0.45	1715.4	3.63	1718.1	0.80	1710.0	0.91	1720.5	0.45	1720.6	7.42	1722.0
02/03/16	0.28	1718.6	2.05	1711.1	3.65	1721.1	0.34	1711.9	0.46	1715.4	3.66	1718.6	0.81	1710.0	0.91	1720.6	0.45	1720.0	4.37	1722.3
02/04/16	0.23	1719.0	1.86	1712.9	3.73	1721.2	0.36	1712.2	0.47	1715.6	3.73	1718.5	0.81	1710.0	0.92	1720.7	0.46	1720.1	6.91	1714.8
02/05/16	0.23	1719.1	1.88	1714.1	3.75	1721.2	0.35	1711.7	0.47	1716.2	3.75	1718.3	0.81	1710.0	0.78	1720.7	0.46	1720.2	7.50	1714.5
02/06/16	0.23	1719.2	1.87	1713.9	3.75	1721.3	0.35	1712.0	0.47	1716.2	3.75	1718.2	0.80	1710.0	0.71	1720.8	0.46	1720.2	7.50	1714.2
02/07/16	0.27	1719.1	1.88	1713.8	3.75	1721.3	0.35	1712.2	0.47	1716.2	3.75	1718.1	0.80	1710.0	0.83	1720.8	0.46	1720.2	7.50	1714.1
02/08/16	0.37	1719.1	1.88	1714.1	3.75	1721.4	0.35	1712.0	0.47	1716.4	3.75	1718.1	0.81	1710.0	0.94	1720.8	0.47	1720.2	7.50	1714.0
02/09/16	0.42	1719.1	1.87	1714.2	3.75	1721.4	0.35	1712.0	0.47	1716.5	3.75	1718.1	0.81	1710.0	0.94	1720.8	0.46	1720.0	7.50	1714.0
02/10/16	0.25	1719.1	1.86	1714.4	3.74	1721.5	0.35	1711.9	0.47	1716.5	3.75	1717.0	0.78	1710.0	0.82	1720.8	0.46	1720.2	7.50	1713.9
02/11/16	0.23	1719.5	1.87	1716.0	3.75	1721.7	0.35	1711.8	0.46	1717.0	3.75	1718.0	0.79	1710.0	0.74	1720.9	0.46	1720.3	7.50	1713.8
02/12/16	0.23	1719.5	1.87	1715.8	3.75	1721.7	0.35	1712.0	0.43	1717.2	3.75	1718.0	0.80	1710.0	0.70	1720.9	0.46	1720.3	7.50	1713.8
02/13/16	0.23	1719.5	1.88	1715.8	3.75	1721.8	0.35	1712.0	0.42	1717.2	3.75	1718.0	0.91	1710.0	0.70	1721.0	0.46	1720.3	7.50	1713.8
02/14/16	0.23	1719.6	1.87	1715.9	3.75	1721.8	0.35	1712.1	0.45	1717.3	3.75	1718.0	0.94	1710.0	0.70	1721.0	0.47	1720.5	7.50	1713.8
02/15/16	0.23	1719.7	1.88	1715.9	3.75	1721.9	0.35	1712.1	0.47	1717.2	3.75	1718.0	0.94	1710.0	0.70	1721.0	0.36	1720.4	7.50	1713.8
02/16/16	0.23	1719.8	1.87	1716.4	3.75	1721.9	0.35	1712.2	0.46	1717.2	3.75	1718.0	0.93	1710.0	0.70	1721.1	0.50	1722.7	7.50	1713.8
02/17/16	0.23	1719.8	1.87	1716.0	3.75	1721.9	0.35	1712.2	0.47	1717.3	3.75	1718.1	0.94	1710.0	0.70	1721.1	0.87	1718.3	7.50	1714.6
02/18/16	0.23	1719.9	1.88	1716.2	3.75	1722.0	0.35	1712.3	0.47	1717.2	3.76	1718.2	0.94	1710.0	0.70	1721.2	0.94	1719.1	7.52	1714.7
02/19/16	0.23	1719.9	1.86	1716.4	3.73	1722.0	0.35	1712.3	0.47	1717.2	3.74	1718.1	0.94	1710.0	0.70	1721.2	0.92	1719.4	7.48	1714.6
02/20/16	0.23	1719.9	1.88	1716.4	3.77	1722.0	0.35	1712.0	0.47	1717.2	3.75	1718.1	0.93	1710.0	0.70	1721.2	0.92	1719.0	7.50	1714.6
02/21/16	0.23	1719.9	1.88	1716.7	3.75	1722.0	0.35	1711.9	0.47	1717.2	3.75	1718.2	0.94	1710.0	0.70	1721.3	0.67	1719.9	7.49	1714.7
02/22/16	0.23	1719.9	1.88	1716.8	3.75	1722.1	0.35	1712.0	0.47	1717.2	3.75	1718.2	0.94	1710.0	0.70	1721.3	0.57	1719.5	7.50	1714.8
02/23/16	0.23	1719.9	1.88	1717.2	3.75	1722.1	0.35	1712.0	0.47	1717.3	3.75	1718.2	0.94	1710.0	0.70	1721.3	0.03	1722.2	7.50	1714.7
02/24/16	0.23	1720.0	1.87	1717.4	3.75	1722.2	0.35	1712.0	0.47	1717.3	3.75	1718.2	0.94	1710.0	0.70	1721.4	0.54	1719.9	7.50	1714.7
02/25/16	0.23	1720.0	1.85	1717.6	3.75	1722.2	0.35	1712.0	0.47	1717.3	3.75	1718.2	0.94	1710.0	0.70	1721.4	0.84	1719.9	7.50	1714.8
02/26/16	0.23	1720.0	1.82	1718.2	3.75	1722.3	0.35	1712.1	0.47	1717.4	3.75	1718.3	0.94	1710.0	0.70	1721.4	0.60	1719.6	7.50	1714.8
02/27/16	0.23	1720.0	1.88	1718.2	3.75	1722.3	0.35	1712.2	0.47	1717.4	3.75	1718.3	0.94	1710.0	0.70	1721.5	0.54	1720.0	7.50	1714.8
02/28/16	0.23	1720.1	1.87	1718.2	3.75	1722.3	0.35	1712.3	0.47	1717.5	3.75	1718.3	0.94	1710.0	0.70	1721.5	0.51	1719.8	7.50	1715.3
02/29/16	0.23	1720.1	1.62	1718.1	3.75	1722.4	0.35	1712.3	0.47	1717.6	3.75	1718.4	0.94	1710.0	0.70	1721.6	0.46	1720.1	7.50	1715.4
Monthly Average	0.26	1719.5	1.89	1716.2	3.74	1721.8	0.35	1712.1	0.46	1716.8	3.74	1718.1	0.88	1710.0	0.76	1721.1	0.54	1720.1	7.37	1714.9
Analytical ¹	Conc (mg/L)	Date	Conc (mg/L)	Date	Conc (mg/L)	Date	Conc (mg/L)	Date	Conc (mg/L)	Date	Conc (mg/L)	Date	Conc (mg/L)	Date	Conc (mg/L)	Date	Conc (mg/L)	Date	Conc (mg/L)	Date
Perchlorate	1600	2/9/2016	1300	2/9/2016	520	2/9/2016	2000	2/9/2016	2000	2/9/2016	870	2/10/2016	1000	2/9/2016	1200	2/9/2016	1600	2/9/2016	390	2/10/2016
Hexavalent Chromium	Future Metric - Enhanced Operations (to be collected by ETI) ²																			
Total Chromium	19	2/9/2016	0.5	2/9/2016	1.4	2/9/2016	22	2/9/2016	20	2/9/2016	13	2/10/2016	21	2/9/2016	10	2/9/2016	0.51	2/9/2016	7.5	2/10/2016

Notes:
 Flow reported as gpm is a daily average calculated from the totalizer reading. NA = Not Available
 1: Analytical results are reported from TestAmerica.
 2: Following contractual amendment agreements, ETI will begin collecting monthly hexavalent chromium samples.

Nevada Environmental Response Trust Groundwater Extraction and Treatment System Enhanced Operational Metrics																	
Date	LS #2	GWTP Effluent				GW-11 Influent ²				FBR Plant Influent ¹							
	Flow (gpm)	Flow (gpm)	TA - Cr (TR) (mg/L)	TA - Cr (VI) (mg/L)	TA - ClO ₂ (mg/L)	Flow (gpm)	Cr (TR) (mg/L)	Cr (VI) (mg/L)	ClO ₂ (mg/L)	Flow (gpm)	TA - ClO ₂ (mg/L)	ETI - ClO ₂ (mg/L)	TA - ClO ₂ ³ (mg/L)	TA - SO ₄ (mg/L)	TA - NO ₃ - N (mg/L)	TA-Cr (TR) (mg/L)	TA-Cr (VI) (mg/L)
02/01/16	938	49				870	0.10	0.062	110	933		81	300	1,300	9	0.059	0.044
02/02/16	937	45				864				915		88					
02/03/16	935	50				869				937		91					
02/04/16	941	53	0.17	ND	710	878				936		94					
02/05/16	937	53				853				935		90					
02/06/16	918	53				841				934	91	97					
02/07/16	921	53				838				928		92					
02/08/16	938	54				842				921		94					
02/09/16	938	53				850				902		99			9	0.065	0.051
02/10/16	937	52				863				923		99					
02/11/16	938	52	0.13	NA ⁴	770	871				938		93					
02/12/16	924	52				884				939		99					
02/13/16	911	53				871				910	89	101					
02/14/16	931	52				874				908		112					
02/15/16	926	52				869				902		99			9	0.064	0.057
02/16/16	858	52				838				896		95					
02/17/16	640	52				657				916		91					
02/18/16	938	52	0.15	NA ⁴	770	881				939		92					
02/19/16	878	52				863				927		93					
02/20/16	876	52				862				905	97	96					
02/21/16	731	52				863				902		94					
02/22/16	915	52				869				956		63			9	0.068	0.054
02/23/16	937	51				869				948		90					
02/24/16	930	52				868				921		83					
02/25/16	838	52	0.20	ND	760	872				933		83					
02/26/16	825	51				866				933		84					
02/27/16	733	52				866				933	96	85					
02/28/16	612	52				868				924		85					
02/29/16	723	52				621				352		88					
Monthly Average	876	52	0.16	ND	753	848	0.10	0.062	110	905	93	91	300	1300	9	0.064	0.052

Notes:

Flow reported as gpm is a daily average calculated from the totalizer reading.

ND = Not detected above laboratory method detection limit (ClO₂ = 0.5 ug/L; ClO₃ = 10 ug/L; NO₃-N = 0.055 mg/L, CR(VI) = 0.25 ug/L); NA = Not Available, sample result not reported.

1: ETI = Envirogen internal process control data, TA = TestAmerica data.

2: Results presented for the GW-11 Influent are from the January 5, 2016 sample. Due to a computer virus at TestAmerica that caused confusion of bottle and cooler shipments, this sample was not collected in February.

3: The chlorate result is higher than recent historical results. The sample was tested again and the result confirmed by TestAmerica. Based on March 2016 sampling results, this value may be considered an outlier and retroactively replaced with the average of January 2016 and March 2016 results.

4: TestAmerica contracted out the Chromium VI sample analysis and has not yet received results for these samples.

Table 4 - Treatment Plant Operational Metrics

Nevada Environmental Response Trust Groundwater Extraction and Treatment System Enhanced Operational Metrics															
Date	1st Stage FBR Influent			2nd Stage FBR Influent			FBR Plant Effluent ¹								
	Flow (gpm)	pH (s.u.)	ORP (mV)	Flow (gpm)	pH (s.u.)	ORP (mV)	Flow (gpm)	TA - ClO ₂ (mg/L)	ETI - ClO ₂ (mg/L)	TA - ClO ₃ (mg/L)	TA-Cr (TR) (mg/L)	TA-Cr (VI) (mg/L)	TA - SO ₄ (mg/L)	TA - NO ₃ - N (mg/L)	ETI - Turbidity (NTU)
02/01/16	939	6.6	-393	856	6.5	-366	937		ND	ND	0.02	ND	1,300	ND	54
02/02/16	927	6.6	-395	801	6.5	-366	829		ND						44
02/03/16	953	6.6	-395	724	6.4	-361	948		ND						36
02/04/16	949	6.6	-395	884	6.4	-358	956		ND						26
02/05/16	948	6.6	-394	902	6.4	-353	973		ND						26
02/06/16	957	6.6	-391	905	6.4	-360	963	ND	ND						26
02/07/16	944	6.6	-394	898	6.4	-356	957		ND						22
02/08/16	937	6.6	-393	898	6.3	-356	945		ND						37
02/09/16	908	6.6	-393	730	6.3	-358	932		ND		0.013	ND		ND	37
02/10/16	977	6.6	-393	874	6.3	-368	906		ND						40
02/11/16	950	6.6	-400	892	6.3	-362	958		ND						47
02/12/16	940	6.6	-392	908	6.3	-357	957		ND						29
02/13/16	912	6.6	-389	905	6.3	-351	941	ND	ND						18
02/14/16	893	6.6	-391	875	6.3	-351	926		ND						19
02/15/16	914	6.6	-393	912	6.3	-350	929		ND		0.0092	ND		ND	21
02/16/16	909	6.6	-394	888	6.3	-350	912		ND						27
02/17/16	953	6.6	-395	909	6.3	-347	944		ND						25
02/18/16	958	6.7	-371	740	6.4	-358	967		ND						21
02/19/16	918	6.6	-373	844	6.3	-356	949		ND						18
02/20/16	872	6.6	-378	645	6.3	-359	937	ND	ND						18
02/21/16	883	6.6	-381	866	6.4	-358	926		ND						20
02/22/16	967	6.7	-382	859	6.3	-365	982		ND		0.013	ND		ND	23
02/23/16	958	6.6	-386	840	6.4	-365	975		ND						21
02/24/16	948	6.7	-399	952	6.4	-366	848		ND						17
02/25/16	941	6.6	-407	921	6.3	-356	954		ND						46
02/26/16	942	6.6	-414	789	6.3	-357	948		ND						18
02/27/16	947	6.6	-418	750	6.3	-364	946	ND	ND						16
02/28/16	942	6.6	-420	887	6.3	-365	940		ND						22
02/29/16	847	6.6	-423	535	6.3	-362	676		ND						40
Monthly Average	932	6.6	-394	841	6.3	-359	930	ND	ND	ND	0.013	ND	1300	ND	28

Notes:

Flow reported as gpm is a daily average calculated from the totalizer reading.

ND = Not detected above laboratory method detection limit (ClO₂ = 0.5 ug/L; ClO₃ = 10 ug/L; NO₃-N= 0.055 mg/L, CR(VI) = 0.25 ug/L).

1: ETI = Envirogen internal process control data, TA = TestAmerica data.

GW-11 Level Monitoring		
Date	Field Measurement (ft)	Volume (MG)
2/12/2016	24.3	44.1
2/23/2016	24.8	43.6

GW-11 Leak Detection Monitoring				
Date	Amount Pumped ¹ (gallons)			
	NW Corner	NE Corner	SW Corner	SE Corner
2/12/2016	0	0	997	0
2/25/2016	45	0	0	0

GW-11 Composite Sample ²		
Analytes	Concentration	Units
Perchlorate	87	mg/L
Chlorate	160	mg/L
Ammonia as N	1.10	mg/L
Total Phosphorus	0.08	mg/L
Total Dissolved Solids (TDS)	5000	mg/L
Total Suspended Solids (TSS)	16	mg/L
pH	8.06	s.u.
Calcium	350	mg/L
Iron	0.41	mg/L
Chromium (total)	0.06	mg/L
Chromium VI	0.04	mg/L
Chloride	1400	mg/L
Nitrate as N	7.80	mg/L
Sulfate	1300	mg/L

Notes:

ND = Not detected above laboratory method detection limit (NH₃-N= 0.1 mg/L; Total P = 0.025 ug/L; Cr(VI) = 0.25 ug/L).

1: Pumping occurs over three consecutive days. The total amount pumped over the three day period is listed with the last day pumping occurred.

2: Corner Composite Sample collected quarterly, most recent sampling results presented. Sampled on: January 18, 2016 by Envirogen.

Nevada Environmental Response Trust Groundwater Extraction and Treatment System Enhanced Operational Metrics						
Date	Flow ¹ (gpm)	FBR Influent Concentration			Influent Function Load ² (lbs/day)	6 Month Rolling Average (lbs/day)
		ClO ₄ (mg/L)	NO ₃ as N (mg/L)	ClO ₃ (mg/L)		
Mar 2015	918	95	7	100	445	591
Apr 2015	916	97	7	140	520	570
May 2015	858	105	6	170	549	571
June 2015	824	108	6	170	532	554
July 2015	857	100	5	180	547	555
Aug 2015	891	87	6	160	516	518
Sep 2015	785	103	9	180	540	521
Oct 2015	950	86	6	180	587	542
Nov 2015	927	82	7	140	496	538
Dec 2015	919	76	9	160	537	537
Jan 2016	892	85	9	160	542	536
Feb 2016 ³	930	93	9	300	846	591

Notes:

Concentrations and flow are presented as monthly average.

1: Flow used in loading calculation is average monthly FBR effluent flow to be consistent with historical loading calculations.

2: FBR loading calculated as $[0.9 \cdot \text{NO}_3 \text{ as N} + 0.17 \cdot \text{ClO}_3 + 0.18 \cdot \text{ClO}_4 \cdot \text{Flow} \cdot 1440 / 1000000 \cdot 8.34]$.

3: The chlorate result is higher than recent historical results. The sample was tested again and the result confirmed by TestAmerica. Based on March 2016 sampling results, this value may be considered an outlier and retroactively replaced with the average of January 2016 and March 2016 results.

Figure 1 - GW-11 Pond Volume and Perchlorate Concentration

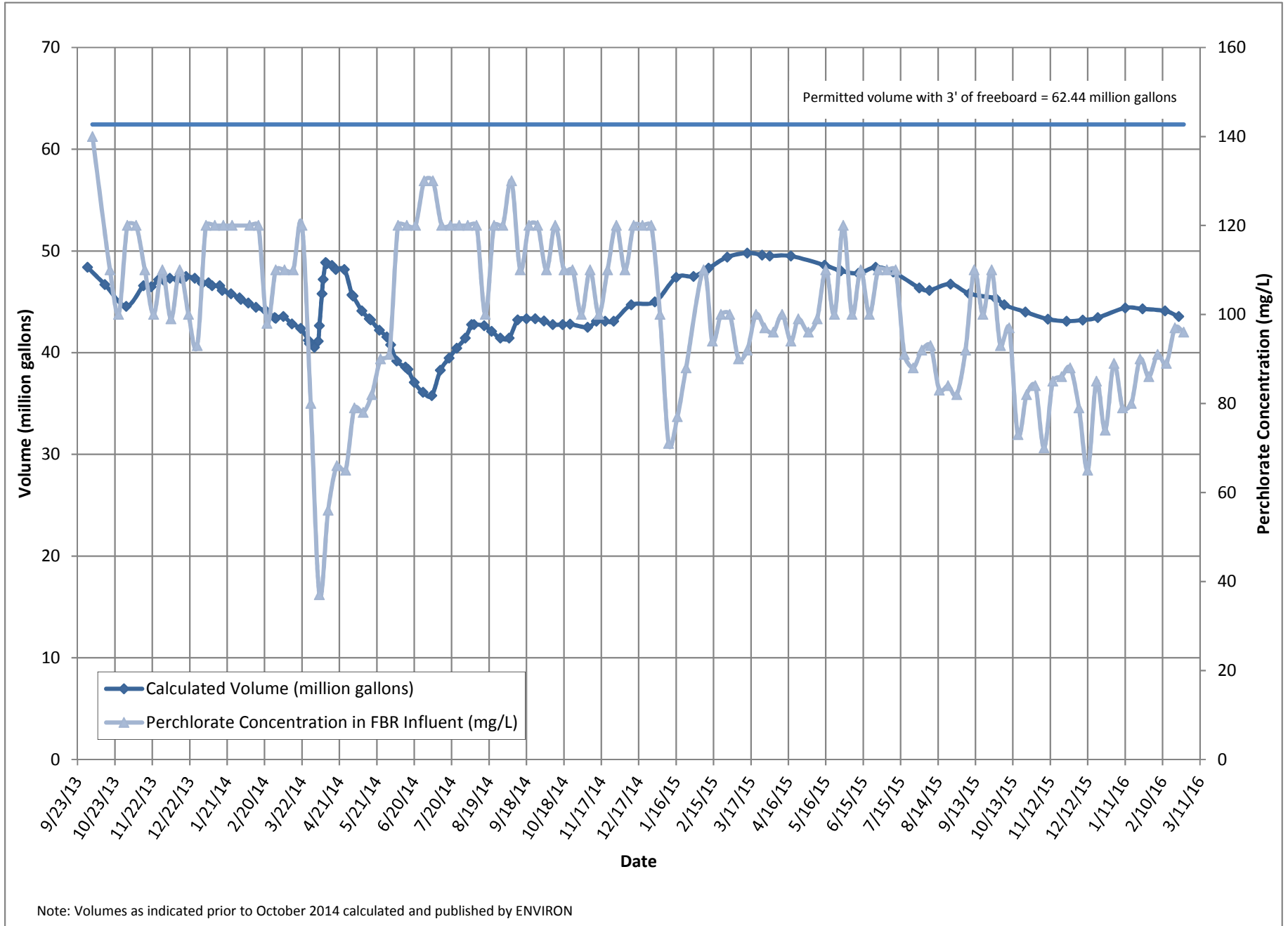


Figure 2 - FBR Equivalent Loading Calculation

