

Table 1 - Seep Well Field (SWF) Operational Metrics

Nevada Environmental Response Trust   Groundwater Extraction and Treatment System   Enhanced Operational Metrics																											
Date	LS #1 Flow (gpm)	East Well (PC-116R)		Center Well (PC99R3)		West Well (PC-115R)		PC 117		PC 118		PC 119		PC 120		PC 121		PC 133									
		Flow (gpm)	Water Elevation (ft amsl)	Flow <sup>2</sup> (gpm)	Water Elevation (ft amsl)	Flow (gpm)	Water Elevation (ft amsl)	Flow (gpm)	Water Elevation (ft amsl)	Flow (gpm)	Water Elevation (ft amsl)	Flow (gpm)	Water Elevation (ft amsl)	Flow (gpm)	Water Elevation (ft amsl)	Flow (gpm)	Water Elevation (ft amsl)	Flow (gpm)	Water Elevation (ft amsl)								
01/01/16	703	132	1540.0	88	1538.7	89	1544.8	88	1541.7	59	1547.7	59	1549.2	0	1551.2	0	1550.9	8	1520.0								
01/02/16	692	135	1540.0	89	1538.7	88	1544.8	89	1541.7	59	1547.7	59	1549.2	0	1551.2	0	1551.0	9	1520.0								
01/03/16	716	133	1540.0	87	1539.1	87	1544.8	87	1541.7	58	1547.7	58	1549.2	0	1551.2	0	1551.0	9	1520.0								
01/04/16	682	135	1540.1	87	1539.1	87	1544.8	88	1541.7	58	1547.7	58	1549.2	0	1551.2	0	1551.0	7	1520.0								
01/05/16	677	133	1540.0	89	1538.8	89	1544.8	88	1541.7	59	1547.7	59	1549.2	0	1551.2	0	1551.0	11	1520.0								
01/06/16	749	137	1540.1	89	1538.5	90	1544.8	90	1541.7	60	1547.7	60	1549.2	0	1551.2	0	1551.0	10	1520.0								
01/07/16	683	130	1540.1	86	1539.2	85	1544.8	86	1541.7	57	1547.7	57	1549.2	0	1551.2	0	1551.0	9	1520.0								
01/08/16	704	133	1540.0	88	1537.9	88	1544.8	88	1541.7	59	1547.7	58	1549.2	0	1551.2	0	1551.0	15	1520.0								
01/09/16	656	133	1540.0	64	1539.1	90	1544.8	89	1541.7	60	1547.6	60	1549.2	0	1551.2	0	1550.9	8	1520.0								
01/10/16	460	128	1540.5	0	1546.5	86	1545.1	87	1542.0	58	1547.9	58	1549.4	0	1551.3	0	1551.0	10	1520.0								
01/11/16	470	127	1540.6	0	1546.6	89	1545.2	88	1542.1	59	1548.0	59	1549.5	0	1551.4	0	1551.1	10	1520.0								
01/12/16	466	129	1540.7	0	1546.6	90	1545.3	90	1542.2	60	1548.0	60	1549.5	0	1551.4	0	1551.1	10	1520.0								
01/13/16	622	125	1540.7	37	1546.6	88	1545.3	88	1542.2	58	1548.1	58	1549.5	0	1551.4	0	1551.0	10	1520.0								
01/14/16	673	126	1540.2	50	1541.7	88	1544.9	88	1541.9	59	1547.8	59	1549.3	0	1551.3	0	1551.0	10	1520.0								
01/15/16	704	123	1540.2	60	1541.7	83	1544.9	88	1541.8	58	1547.7	58	1549.3	0	1551.2	0	1550.9	11	1520.0								
01/16/16	711	123	1540.1	59	1541.3	88	1544.8	88	1541.7	58	1547.7	59	1549.2	0	1551.2	0	1550.9	10	1520.0								
01/17/16	703	124	1540.0	59	1541.4	88	1544.8	88	1541.7	59	1547.6	59	1549.2	0	1551.1	0	1550.9	9	1520.0								
01/18/16	703	124	1540.0	59	1541.6	88	1544.8	88	1541.7	58	1547.6	58	1549.2	0	1551.1	0	1550.9	9	1520.0								
01/19/16	703	155	1540.0	59	1541.4	88	1544.7	88	1541.7	58	1547.6	58	1549.1	0	1551.1	0	1550.8	9	1520.0								
01/20/16	703	176	1539.5	59	1541.5	88	1544.7	88	1541.6	59	1547.5	59	1549.1	0	1551.0	0	1550.8	9	1520.0								
01/21/16	703	176	1539.5	59	1541.3	91	1544.6	99	1541.5	59	1547.5	59	1549.1	0	1551.0	0	1550.8	9	1520.0								
01/22/16	703	175	1539.4	58	1541.3	118	1554.6	116	1541.5	58	1547.5	58	1549.0	0	1551.0	0	1550.8	9	1520.0								
01/23/16	703	176	1539.4	59	1541.5	117	1544.4	116	1541.5	59	1547.4	59	1549.0	0	1551.0	0	1550.7	9	1520.0								
01/24/16	703	176	1539.4	59	1541.1	117	1544.3	116	1541.5	59	1547.4	59	1549.0	0	1550.9	0	1550.7	9	1520.0								
01/25/16	533	176	1539.3	58	1541.2	118	1544.3	116	1541.4	58	1547.4	58	1548.9	0	1550.9	0	1550.7	9	1520.0								
01/26/16	469	176	1539.3	59	1541.6	117	1544.3	116	1541.4	59	1547.4	59	1548.9	0	1550.9	0	1550.6	9	1520.0								
01/27/16	467	176	1539.3	58	1541.5	117	1544.3	116	1541.4	58	1547.3	58	1548.9	0	1550.8	0	1550.6	9	1520.0								
01/28/16	473	176	1539.3	59	1541.3	88	1544.2	116	1541.4	59	1547.3	59	1548.9	0	1550.8	0	1550.6	9	1520.0								
01/29/16	470	176	1539.6	59	1541.5	114	1547.4	116	1541.6	58	1547.7	58	1549.2	0	1551.0	0	1550.7	10	1520.0								
01/30/16	469	176	1539.2	59	1541.2	117	1544.3	116	1541.4	59	1547.3	59	1548.9	0	1550.8	0	1550.6	10	1520.0								
01/31/16	469	176	1539.2	58	1541.4	118	1544.2	116	1541.4	59	1547.3	59	1548.9	0	1550.8	0	1550.6	10	1520.0								
Monthly Average	624	148	1539.9	60	1541.3	96	1545.1	97	1541.7	59	1547.6	59	1549.2	0	1551.4	0	1550.9	10	1520.0								
Analytical <sup>1</sup>	Conc (mg/L)		Date	Conc (mg/L)		Date	Conc (mg/L)		Date	Conc (mg/L)		Date	Conc (mg/L)		Date	Conc (mg/L)		Date	Conc (mg/L)		Date						
Perchlorate	21		1/5/2016	21		1/5/2016	13		1/5/2016	12		1/5/2016	4		1/5/2016	0.45		1/5/2016	0.0097		1/5/2016	0.023		1/5/2016	1		1/5/2016
Hexavalent Chromium	Future Metric - Enhanced Operations (to be collected by ETI) <sup>2</sup>																										
Total Chromium	ND		1/5/2016	0.0054		1/5/2016	ND		1/5/2016	0.0026		1/5/2016	ND		1/5/2016	ND		1/5/2016	ND		1/5/2016	ND		1/5/2016	ND		1/5/2016

Notes:

Flow reported as gpm is a daily average calculated from the totalizer reading.

NA= Not Available; ND = Not detected above laboratory method detection limit (ClO<sub>4</sub> = 0.5 ug/L; ClO<sub>3</sub> = 10 ug/L; NO<sub>3</sub>-N= 0.055 mg/L, CR(VI) = 0.25 ug/L).

1: Analytical results are reported from TestAmerica.

2: Following contractual amendment agreements, ETI will begin collecting monthly hexavalent chromium samples.

3: Well PC-99R2/R3 experienced motor and electrical problems. The motor was repaired and flow returned to normal on January 13, 2016.

Nevada Environmental Response Trust   Groundwater Extraction and Treatment System   Enhanced Operational Metrics																				
Date	LS #3 Flow (gpm)	ART 1A/1B		ART 2A/2B		ART 3A/3B		ART 4A/4B		ART 6/9		ART 6/9		ART 7A/7B		ART 8A/8B		PC-150		
		Flow (gpm)	Water Elevation (ft amsl)	Flow (gpm)	Water Elevation (ft amsl)	Flow (gpm)	Water Elevation (ft amsl)	Flow (gpm)	Water Elevation (ft amsl)	Flow (gpm)	Water Elevation (ft amsl)	Flow (gpm)	Water Elevation (ft amsl)	Flow (gpm)	Water Elevation (ft amsl)	Flow (gpm)	Water Elevation (ft amsl)	Flow (gpm)	Water Elevation (ft amsl)	
01/01/16	234	0	1591.7	57	1591.0	45	1587.7	6	1575.0	59	1576.6	20	1578.0	59	1587.2	4	1584.3			
01/02/16	230	0	1591.7	57	1591.0	45	1587.7	7	1575.0	59	1576.6	22	1578.0	60	1587.2	3	1584.8			
01/03/16	239	0	1591.7	59	1591.0	46	1587.7	6	1575.0	60	1576.6	22	1578.0	59	1587.2	3	1583.8			
01/04/16	227	0	1591.7	55	1591.0	43	1587.7	6	1605.0	57	1576.6	21	1578.0	58	1587.2	4	1585.1			
01/05/16	225	0	1591.7	57	1591.0	45	1587.7	6	1588.0	59	1576.6	22	1578.0	59	1587.2	3	1584.9			
01/06/16	250	0	1591.7	59	1591.0	46	1587.7	7	1575.0	60	1576.6	23	1578.0	60	1587.2	3	1584.7			
01/07/16	228	0	1591.7	56	1591.0	44	1587.7	6	1575.0	57	1576.6	21	1578.0	58	1575.0	4	1585.1			
01/08/16	235	0	1591.7	58	1591.0	45	1587.6	8	1575.0	59	1576.6	22	1578.0	59	1587.1	4	1583.9			
01/09/16	239	0	1591.7	59	1591.0	46	1587.6	7	1575.0	59	1576.6	21	1578.0	61	1587.1	4	1583.8			
01/10/16	230	0	1591.7	56	1591.0	44	1587.6	7	1575.0	58	1576.6	21	1578.0	58	1587.1	4	1584.8			
01/11/16	235	0	1591.7	57	1591.0	45	1587.6	7	1575.0	59	1576.6	21	1578.0	59	1587.1	4	1583.9			
01/12/16	233	0	1591.7	58	1591.0	46	1587.6	8	1575.0	59	1576.6	20	1578.0	60	1587.1	4	1584.3			
01/13/16	239	0	1591.7	57	1591.0	45	1587.6	7	1575.0	59	1576.6	22	1578.0	58	1587.1	4	1584.5			
01/14/16	235	0	1591.7	57	1591.0	44	1587.6	7	1575.0	58	1576.6	21	1578.0	59	1587.1	3	1584.4			
01/15/16	235	0	1591.7	58	1591.0	45	1587.6	7	1575.0	59	1576.6	20	1578.0	59	1587.1	4	1584.9			
01/16/16	233	0	1591.7	57	1590.9	44	1587.6	7	1575.0	58	1576.6	22	1578.0	59	1587.1	4	1585.0			
01/17/16	235	0	1591.6	57	1590.9	45	1587.6	7	1575.0	59	1576.6	22	1578.0	59	1587.1	4	1584.6			
01/18/16	234	0	1591.6	58	1590.9	44	1587.6	8	1575.0	59	1576.6	19	1578.0	59	1587.1	3	1583.8			
01/19/16	235	0	1591.6	58	1590.9	45	1587.6	8	1575.0	58	1576.6	17	1578.0	59	1587.1	4	1584.8			
01/20/16	234	0	1591.6	59	1590.9	44	1587.6	7	1605.0	59	1576.6	16	1578.0	59	1587.0	4	1584.1			
01/21/16	234	0	1591.6	59	1590.9	49	1587.6	7	1605.0	59	1576.6	18	1578.0	59	1587.0	4	1584.0			
01/22/16	234	0	1591.6	58	1590.9	58	1587.6	7	1605.0	58	1576.6	16	1578.0	59	1587.0	3	1584.9			
01/23/16	234	0	1591.6	59	1590.9	57	1587.6	7	1605.0	59	1576.5	17	1578.0	59	1587.0	4	1583.9			
01/24/16	235	0	1591.6	59	1590.9	58	1587.6	8	1605.0	59	1576.6	15	1578.0	59	1587.0	4	1584.1			
01/25/16	234	0	1591.6	58	1590.9	58	1587.6	7	1605.0	58	1576.5	15	1578.0	59	1587.0	3	1584.9			
01/26/16	235	0	1591.6	58	1590.8	58	1587.6	8	1605.0	58	1576.5	15	1578.0	58	1587.0	4	1584.2			
01/27/16	234	0	1591.6	59	1590.8	58	1587.5	7	1605.0	59	1576.6	15	1578.0	59	1587.0	3	1583.9			
01/28/16	234	0	1591.6	59	1590.8	57	1587.6	8	1605.0	59	1576.5	14	1578.0	59	1587.0	4	1584.4			
01/29/16	235	0	1591.6	58	1590.9	58	1587.6	7	1605.0	58	1576.6	15	1578.0	59	1587.0	4	1583.8			
01/30/16	234	0	1591.6	59	1590.9	58	1587.6	7	1605.0	59	1576.6	15	1578.0	59	1587.0	4	1583.9			
01/31/16	234	0	1591.6	59	1590.9	58	1587.6	7	1605.0	59	1576.6	15	1578.0	59	1587.0	5	1583.9			
Monthly Average	234	0	1591.7	58	1590.9	49	1587.6	7	1588.0	59	1576.6	19	1578.0	59	1586.7	4	1584.4			
Analytical <sup>1</sup>	Conc (mg/L)		Date		Conc (mg/L)		Date		Conc (mg/L)		Date		Conc (mg/L) <sup>2</sup>		Date		Conc (mg/L)		Date	
Perchlorate	17		1/5/2016		23		1/5/2016		180		1/5/2016		220		1/5/2016		190		1/5/2016	
Hexavalent Chromium	Future Metric - Enhanced Operations (to be collected by ETI) <sup>3</sup>																			
Total Chromium	0.019		1/5/2016		0.0079		1/5/2016		0.33		1/5/2016		0.41		1/5/2016		0.79		1/5/2016	

Notes:  
 Flow reported as gpm is a daily average calculated from the totalizer reading. NA = Not Available.  
 1: Analytical results are reported from TestAmerica.  
 2: Concentrations reported for ART-9.  
 3: Following contractual amendment agreements, ETI will begin collecting monthly hexavalent chromium samples.

Nevada Environmental Response Trust   Groundwater Extraction and Treatment System   Enhanced Operational Metrics																				
Date	I-AR		I-AA		I-AB		I-AC		I-AD		I-B		I-C		I-D		I-E		I-F	
	Flow (gpm)	Water Elevation (ft amsl)	Flow (gpm)	Water Elevation (ft amsl)	Flow (gpm)	Water Elevation (ft amsl)	Flow (gpm)	Water Elevation (ft amsl)	Flow (gpm)	Water Elevation (ft amsl)	Flow (gpm)	Water Elevation (ft amsl)	Flow (gpm)	Water Elevation (ft amsl)	Flow (gpm)	Water Elevation (ft amsl)	Flow (gpm)	Water Elevation (ft amsl)	Flow (gpm)	Water Elevation (ft amsl)
01/01/16	0.61	1715.7	1.17	1709.4	0.00	1720.8	0.00	1723.6	0.00	1725.0	0.64	1709.3	3.95	1712.5	1.87	1722.5	1.41	1716.9	4.69	1720.6
01/02/16	0.61	1715.6	1.17	1709.4	0.00	1720.8	0.00	1723.6	0.00	1725.0	0.64	1709.4	3.75	1712.9	1.88	1722.4	1.40	1716.8	4.69	1720.5
01/03/16	0.60	1715.2	1.17	1709.5	0.00	1720.8	0.00	1723.6	0.00	1725.0	0.63	1709.4	3.75	1714.5	1.87	1722.4	1.18	1716.8	4.69	1720.5
01/04/16	0.60	1715.7	1.17	1709.6	0.00	1720.8	0.00	1723.6	0.00	1721.1	0.63	1709.3	3.75	1715.0	1.88	1722.3	1.07	1716.8	4.69	1720.4
01/05/16	0.60	1715.7	1.17	1709.8	0.00	1720.8	0.00	1723.6	0.00	1725.1	0.62	1709.4	3.75	1715.2	1.88	1722.3	0.94	1716.6	4.69	1720.2
01/06/16	0.59	1715.7	0.92	1709.6	0.00	1720.8	0.00	1723.6	0.00	1725.1	0.62	1709.3	2.84	1715.4	1.66	1722.2	1.27	1716.5	4.67	1720.1
01/07/16	0.60	1715.7	0.99	1711.3	0.00	1720.8	0.00	1723.6	0.00	1725.1	0.63	1709.4	2.81	1718.2	1.65	1722.3	1.24	1716.8	4.69	1720.2
01/08/16	0.59	1715.2	1.01	1711.0	0.00	1720.8	0.00	1723.6	0.00	1725.0	0.63	1709.4	2.81	1718.2	1.67	1722.3	1.21	1716.7	4.69	1720.2
01/09/16	0.59	1715.4	1.01	1711.1	0.00	1720.8	0.00	1723.6	0.00	1725.0	0.65	1709.4	2.81	1718.2	1.69	1722.3	1.19	1716.6	4.69	1720.0
01/10/16	0.60	1715.7	0.97	1711.0	0.00	1720.8	0.00	1723.6	0.00	1725.0	0.66	1709.3	2.81	1718.2	1.85	1722.3	1.16	1716.7	4.69	1720.2
01/11/16	0.38	1715.2	1.00	1711.1	0.00	1720.8	0.00	1723.5	0.00	1725.0	0.71	1709.4	2.81	1718.3	1.87	1722.2	1.15	1716.6	4.69	1720.2
01/12/16	0.23	1725.2	1.16	1711.0	0.00	1721.0	0.00	1723.5	0.00	1725.0	0.74	1709.5	2.81	1718.4	1.88	1722.2	1.17	1716.6	4.69	1720.1
01/13/16	0.23	1726.5	1.17	1711.0	0.00	1721.1	0.00	1723.6	0.00	1725.0	0.74	1709.5	2.81	1718.5	1.87	1722.2	0.47	1716.6	4.69	1720.1
01/14/16	0.22	1726.7	1.16	1711.0	0.00	1721.1	0.00	1723.6	0.00	1725.0	0.75	1709.7	2.81	1718.7	1.87	1722.2	0.47	1716.6	4.69	1720.1
01/15/16	0.21	1726.8	1.14	1711.1	0.00	1721.1	0.00	1723.6	0.00	1725.0	0.77	1709.4	2.81	1718.8	1.88	1722.3	0.47	1716.5	4.69	1720.0
01/16/16	0.23	1726.8	1.08	1711.2	0.00	1721.1	0.00	1723.6	0.00	1725.0	0.78	1709.6	2.81	1718.9	1.88	1722.2	0.47	1716.4	4.69	1719.9
01/17/16	0.23	1726.8	0.94	1711.2	0.00	1721.2	0.00	1723.5	0.00	1725.0	0.80	1709.4	2.81	1719.0	1.88	1722.2	0.47	1716.5	4.69	1719.9
01/18/16	0.23	1726.9	0.94	1711.3	0.00	1721.2	0.00	1723.6	0.00	1725.0	0.79	1709.7	2.81	1719.1	1.87	1722.3	0.47	1716.5	4.69	1720.0
01/19/16	0.23	1726.9	0.94	1711.4	0.00	1721.2	0.00	1723.5	0.01	1725.0	0.78	1709.3	2.81	1719.1	1.88	1722.2	0.47	1716.4	4.69	1719.9
01/20/16	0.23	1726.9	0.94	1711.3	0.00	1721.2	0.00	1723.5	0.00	1725.0	0.79	1709.3	2.81	1719.1	1.87	1722.2	0.47	1716.4	4.69	1719.8
01/21/16	0.23	1726.9	0.94	1711.4	0.00	1721.2	0.00	1723.5	0.00	1725.0	0.80	1709.3	2.81	1719.2	1.88	1722.2	0.47	1716.3	3.84	1719.8
01/22/16	0.23	1727.0	0.94	1711.6	0.00	1721.2	0.00	1723.5	0.00	1725.0	0.81	1709.4	2.81	1719.2	1.88	1722.2	0.47	1716.4	3.75	1719.9
01/23/16	0.23	1726.9	0.94	1711.7	0.00	1721.2	0.00	1723.6	0.00	1725.0	0.82	1709.6	2.81	1719.2	1.88	1722.3	0.47	1716.4	3.75	1719.9
01/24/16	0.23	1726.9	0.92	1711.8	0.00	1721.2	0.00	1723.6	0.00	1725.0	0.82	1709.3	2.71	1719.2	1.82	1722.2	0.43	1716.4	3.71	1719.9
01/25/16	0.23	1726.9	0.94	1714.0	0.00	1721.3	0.00	1723.5	0.00	1725.0	0.78	1709.5	1.88	1720.3	1.41	1722.3	0.44	1716.4	3.75	1719.8
01/26/16	0.23	1726.8	0.86	1713.7	0.00	1721.2	0.00	1723.5	0.00	1724.9	0.79	1709.3	1.87	1720.4	1.40	1722.3	0.42	1716.4	3.72	1719.8
01/27/16	0.23	1727.5	0.94	1715.4	0.00	1721.3	0.00	1723.5	0.00	1724.9	0.82	1709.6	1.87	1720.4	1.32	1722.3	0.23	1716.4	3.51	1719.8
01/28/16	0.23	1727.5	0.63	1715.1	0.00	1721.3	0.00	1723.6	0.00	1725.0	0.83	1709.3	1.87	1720.6	1.41	1722.5	0.24	1716.6	3.74	1720.0
01/29/16	0.23	1727.5	0.47	1716.1	0.00	1721.4	0.00	1723.7	0.00	1725.0	0.84	1709.4	1.88	1721.2	1.41	1722.5	0.23	1716.6	3.75	1720.0
01/30/16	0.24	1727.5	0.47	1716.1	0.00	1721.4	0.00	1723.6	0.00	1725.0	0.85	1709.7	1.88	1721.3	1.41	1722.6	0.24	1716.7	3.75	1720.1
01/31/16	0.23	1727.5	0.56	1716.0	0.00	1721.4	0.00	1723.5	0.00	1725.0	0.85	1709.7	1.87	1721.3	1.37	1722.6	0.24	1716.7	3.75	1720.1
Monthly Average	0.36	1722.9	0.96	1711.8	0.00	1721.1	0.00	1723.6	0.00	1724.9	0.74	1709.4	2.76	1718.3	1.74	1722.3	0.71	1716.6	4.35	1720.1
Analytical <sup>1</sup>	Conc (mg/L)	Date	Conc (mg/L)	Date	Conc (mg/L)	Date	Conc (mg/L)	Date	Conc (mg/L)	Date	Conc (mg/L)	Date	Conc (mg/L)	Date	Conc (mg/L)	Date	Conc (mg/L)	Date	Conc (mg/L)	Date
Perchlorate	1800	1/19/2016	98	1/19/2016	94	1/19/2016	130	1/19/2016	130	1/19/2016	530	1/19/2016	760	1/19/2016	740	1/19/2016	690	1/19/2016	950	1/19/2016
Hexavalent Chromium	Future Metric - Enhanced Operations (to be collected by ETI) <sup>2</sup>																			
Total Chromium	0.41	1/19/2016	0.06	1/19/2016	0.023	1/19/2016	0.93	1/19/2016	0.76	1/19/2016	0.15	1/19/2016	3	1/19/2016	6.4	1/19/2016	9.6	1/19/2016	16	1/19/2016

Notes:  
 Flow reported as gpm is a daily average calculated from the totalizer reading. NA=Not Available.  
 1: Analytical results are reported from TestAmerica.  
 2: Following contractual amendment agreements, ETI will begin collecting monthly hexavalent chromium samples.

Table 3 - Interceptor Well Field (IWF) Operational Metrics

Nevada Environmental Response Trust   Groundwater Extraction and Treatment System   Enhanced Operational Metrics																		
Date	I-G		I-H		I-J		I-I		I-K		I-L		I-M		I-N		I-P	
	Flow (gpm)	Water Elevation (ft amsl)	Flow (gpm)	Water Elevation (ft amsl)	Flow (gpm)	Water Elevation (ft amsl)	Flow (gpm)	Water Elevation (ft amsl)	Flow (gpm)	Water Elevation (ft amsl)	Flow (gpm)	Water Elevation (ft amsl)	Flow (gpm)	Water Elevation (ft amsl)	Flow (gpm)	Water Elevation (ft amsl)	Flow (gpm)	Water Elevation (ft amsl)
01/01/16	0.20	1713.0	0.95	1709.4	4.69	1720.9	6.56	1707.0	1.41	1718.9	1.88	1713.3	2.34	1719.9	3.50	1715.1	2.14	1709.5
01/02/16	0.20	1715.2	0.94	1709.4	4.69	1720.9	6.56	1707.0	1.41	1719.8	1.87	1713.3	2.34	1720.9	3.33	1720.1	1.45	1715.1
01/03/16	0.21	1713.0	0.94	1709.4	4.69	1720.8	6.56	1707.0	1.41	1719.8	1.87	1713.3	2.32	1720.8	3.28	1720.5	1.42	1715.0
01/04/16	0.21	1711.1	0.94	1709.4	4.69	1720.8	6.56	1707.0	1.41	1719.9	1.88	1713.3	2.36	1720.7	3.28	1721.5	1.40	1715.0
01/05/16	0.17	1711.8	0.94	1709.4	4.69	1720.8	6.56	1707.0	1.41	1719.9	1.88	1713.3	2.34	1720.7	3.28	1722.5	1.37	1715.1
01/06/16	0.12	1711.6	0.94	1709.4	4.68	1720.8	4.82	1707.0	1.40	1719.9	1.86	1713.3	2.13	1720.6	3.28	1723.2	1.40	1715.0
01/07/16	0.12	1719.0	0.94	1709.4	4.69	1720.8	6.56	1707.0	1.41	1720.1	1.88	1711.5	2.33	1720.7	3.28	1726.6	1.41	1715.0
01/08/16	0.12	1717.3	0.94	1709.4	4.73	1720.8	6.62	1707.0	1.42	1720.1	1.88	1711.3	2.34	1720.7	3.28	1726.6	1.39	1715.0
01/09/16	0.11	1718.4	0.94	1709.4	4.65	1720.7	6.51	1707.0	1.39	1720.1	1.87	1711.3	2.34	1720.7	3.28	1724.6	1.34	1715.0
01/10/16	0.12	1720.0	0.94	1709.4	4.69	1720.7	6.56	1707.0	1.41	1720.1	1.87	1711.3	2.34	1720.7	3.28	1724.6	1.29	1715.1
01/11/16	0.12	1716.9	0.94	1709.4	4.69	1720.7	6.49	1707.0	1.41	1720.1	1.88	1711.2	2.34	1720.6	3.28	1724.6	1.26	1715.1
01/12/16	0.13	1714.0	0.94	1709.4	4.69	1720.7	5.83	1707.0	1.41	1720.1	1.88	1713.7	2.34	1720.6	3.28	1724.8	1.24	1715.0
01/13/16	0.09	1713.1	0.94	1709.4	4.69	1720.7	5.86	1707.0	1.41	1720.1	1.87	1715.1	2.34	1720.6	3.28	1724.7	0.96	1715.0
01/14/16	0.10	1718.0	0.94	1709.4	5.60	1720.7	8.61	1707.0	1.41	1720.1	1.88	1715.4	2.34	1720.6	3.28	1724.7	0.70	1720.3
01/15/16	0.12	1715.2	0.94	1709.4	5.62	1720.7	9.37	1707.0	1.41	1720.2	1.87	1716.1	2.34	1720.6	3.28	1724.8	0.70	1720.6
01/16/16	0.12	1714.5	0.94	1709.4	5.63	1720.7	9.38	1707.0	1.41	1720.1	1.88	1716.6	2.34	1720.6	2.87	1724.7	0.70	1720.5
01/17/16	0.12	1713.6	0.94	1709.4	5.63	1720.7	9.38	1707.0	1.41	1720.1	1.88	1717.0	2.34	1720.6	2.81	1724.8	0.70	1720.5
01/18/16	0.12	1713.8	0.94	1709.4	5.62	1720.7	9.37	1707.0	1.41	1720.1	1.87	1717.5	2.34	1720.7	2.81	1724.9	0.70	1720.5
01/19/16	0.12	1713.4	0.94	1709.4	5.63	1720.7	9.38	1707.0	1.41	1720.1	1.88	1717.0	2.34	1720.6	2.81	1724.8	0.68	1720.5
01/20/16	0.11	1713.4	0.94	1709.4	5.62	1720.7	9.37	1707.0	1.41	1720.1	1.87	1714.4	2.34	1720.6	2.81	1724.8	0.70	1720.6
01/21/16	0.12	1713.3	0.94	1709.4	5.62	1720.7	9.38	1707.0	1.41	1720.1	1.88	1714.7	2.34	1720.6	2.81	1724.8	0.70	1720.5
01/22/16	0.12	1712.9	0.94	1709.4	5.63	1720.7	9.38	1707.0	1.41	1720.2	1.88	1714.9	2.34	1720.6	2.81	1724.8	0.70	1720.5
01/23/16	0.12	1713.3	0.94	1709.4	5.62	1720.7	9.37	1707.0	1.41	1720.2	1.87	1715.4	2.34	1720.6	2.81	1724.9	0.70	1720.5
01/24/16	0.12	1712.7	0.92	1709.4	5.58	1720.7	9.37	1707.0	1.39	1720.2	1.86	1715.7	2.33	1720.6	2.79	1724.9	0.68	1720.5
01/25/16	0.12	1713.6	0.94	1709.4	5.63	1720.7	9.38	1707.0	1.41	1720.2	1.88	1717.6	2.34	1720.7	2.81	1725.2	0.47	1720.7
01/26/16	0.12	1712.0	0.93	1709.4	5.60	1720.7	9.38	1707.0	0.47	1720.1	1.87	1717.2	2.11	1720.7	2.80	1724.9	0.46	1720.7
01/27/16	0.12	1712.7	0.88	1709.4	5.29	1720.7	9.37	1707.0	0.00	1721.5	1.87	1718.4	1.76	1720.8	2.64	1725.1	0.39	1720.7
01/28/16	0.11	1712.4	0.93	1709.4	5.62	1720.8	9.38	1707.0	0.00	1721.7	1.87	1718.7	1.88	1721.0	2.81	1725.4	0.45	1720.8
01/29/16	0.12	1713.3	0.94	1709.4	5.62	1720.8	7.02	1707.0	2.69	1721.8	1.88	1719.3	1.88	1721.1	2.81	1725.3	0.47	1720.8
01/30/16	0.13	1711.8	0.94	1709.4	5.63	1720.8	5.86	1707.0	3.28	1715.5	1.88	1719.7	1.88	1721.1	2.81	1725.4	0.47	1720.8
01/31/16	0.13	1713.9	0.94	1709.4	5.62	1720.8	5.71	1707.0	2.97	1714.9	1.87	1719.9	1.87	1721.2	2.81	1725.5	0.47	1720.8
Monthly Average	0.13	1714.1	0.93	1709.4	5.22	1720.7	7.76	1707.0	1.44	1719.9	1.87	1714.8	2.25	1720.7	3.04	1724.3	0.91	1718.3
Analytical <sup>1</sup>	Conc (mg/L)	Date	Conc (mg/L)	Date	Conc (mg/L)	Date	Conc (mg/L)	Date	Conc (mg/L)	Date	Conc (mg/L)	Date	Conc (mg/L)	Date	Conc (mg/L)	Date	Conc (mg/L)	Date
Perchlorate	1800	1/19/2016	1900	1/19/2016	720	1/19/2016	330	1/19/2016	240	1/19/2016	920	1/19/2016	690	1/19/2016	780	1/19/2016	1200	1/19/2016
Hexavalent Chromium																		
Total Chromium	23	1/19/2016	20	1/19/2016	14	1/19/2016	4	1/19/2016	2.1	1/19/2016	0.55	1/19/2016	9.1	1/19/2016	9.2	1/19/2016	18	1/19/2016

Notes:

Flow reported as gpm is a daily average calculated from the totalizer reading. NA=Not Available.

1: Analytical results are reported from TestAmerica.

2: Following contractual amendment agreements, ETI will begin collecting monthly hexavalent chromium samples.

Table 3 - Interceptor Well Field (IWF) Operational Metrics

Nevada Environmental Response Trust   Groundwater Extraction and Treatment System   Enhanced Operational Metrics																				
Date	I-Q		I-R		I-S		I-T		I-U		I-V		I-W		I-X		I-Z			
	Flow (gpm)	Water Elevation (ft amsl)	Flow (gpm)	Water Elevation (ft amsl)	Flow (gpm)	Water Elevation (ft amsl)	Flow (gpm)	Water Elevation (ft amsl)	Flow (gpm)	Water Elevation (ft amsl)	Flow (gpm)	Water Elevation (ft amsl)	Flow (gpm)	Water Elevation (ft amsl)	Flow (gpm)	Water Elevation (ft amsl)	Flow (gpm)	Water Elevation (ft amsl)		
01/01/16	0.55	1716.8	2.17	1709.9	3.59	1716.0	0.24	1717.9	0.82	1708.7	4.69	1708.7	0.65	1715.5	1.72	1722.0	0.99	1718.0	6.56	1713.8
01/02/16	0.55	1712.1	2.16	1708.8	3.60	1717.0	0.24	1717.9	0.82	1709.0	4.69	1709.0	0.66	1713.3	1.69	1722.0	0.87	1717.8	6.56	1713.7
01/03/16	0.55	1713.7	2.15	1709.1	3.67	1711.0	0.25	1717.9	0.82	1709.4	4.69	1709.4	0.66	1713.6	1.65	1721.9	0.93	1717.8	6.56	1713.6
01/04/16	0.75	1713.9	2.14	1708.8	3.76	1715.4	0.25	1717.9	0.82	1709.6	4.69	1709.6	0.77	1714.4	1.74	1721.9	0.94	1717.8	6.56	1713.6
01/05/16	0.78	1711.6	2.13	1708.9	3.75	1710.0	0.26	1717.9	0.82	1709.7	4.69	1718.0	0.77	1710.0	1.73	1720.5	0.93	1717.7	6.56	1713.5
01/06/16	0.76	1711.6	2.13	1709.1	3.73	1710.0	0.26	1717.8	0.67	1709.8	4.68	1717.9	0.75	1710.0	1.72	1720.4	0.70	1718.9	6.55	1713.5
01/07/16	0.76	1711.6	2.14	1709.6	3.75	1710.0	0.25	1717.9	0.70	1710.9	4.69	1717.9	0.73	1710.0	1.72	1721.7	0.71	1718.2	6.56	1713.5
01/08/16	0.52	1711.6	2.15	1709.1	3.75	1710.0	0.25	1717.8	0.70	1711.0	4.73	1717.8	0.70	1710.0	1.71	1721.7	0.69	1718.2	6.67	1713.7
01/09/16	0.51	1719.2	2.15	1709.0	3.75	1710.0	0.25	1713.9	0.70	1710.9	4.65	1717.7	0.70	1710.0	1.71	1720.3	0.70	1718.6	7.44	1713.6
01/10/16	0.50	1717.2	2.14	1709.4	3.75	1710.0	0.25	1717.8	0.70	1711.0	4.69	1717.7	0.70	1710.0	1.71	1721.6	0.70	1718.6	7.50	1713.5
01/11/16	0.68	1719.8	2.14	1708.9	3.75	1710.0	0.25	1717.8	0.70	1711.3	4.69	1717.6	0.70	1710.0	1.72	1721.6	0.70	1718.5	7.50	1713.5
01/12/16	0.70	1711.7	2.14	1720.6	3.75	1713.3	0.25	1717.8	0.67	1711.7	4.69	1717.6	0.70	1710.0	1.72	1721.6	0.70	1719.3	7.49	1713.4
01/13/16	0.70	1711.7	2.14	1720.7	3.75	1716.0	0.25	1717.8	0.70	1711.8	4.69	1717.6	0.72	1710.0	1.72	1721.6	0.70	1719.6	7.50	1713.6
01/14/16	0.70	1711.7	2.15	1719.6	3.75	1716.6	0.18	1717.8	0.70	1712.5	4.69	1717.7	0.73	1710.0	1.72	1721.5	0.70	1719.5	7.50	1713.6
01/15/16	0.70	1711.7	2.15	1720.2	3.75	1717.1	0.34	1713.3	0.70	1712.8	4.69	1717.8	0.70	1710.0	1.72	1720.4	0.69	1719.7	7.50	1713.7
01/16/16	0.70	1711.7	2.14	1720.7	3.75	1718.1	0.35	1712.8	0.70	1712.8	4.69	1717.7	0.70	1710.0	1.72	1720.3	0.70	1720.0	7.50	1713.6
01/17/16	0.70	1711.7	2.14	1721.0	3.75	1718.9	0.33	1712.7	0.70	1712.9	3.76	1717.7	0.70	1710.0	1.72	1721.4	0.64	1720.1	7.50	1713.6
01/18/16	0.70	1711.7	2.14	1721.2	4.56	1719.4	0.32	1712.9	0.70	1712.9	3.75	1717.8	0.70	1710.0	1.72	1721.5	0.47	1720.1	7.50	1713.6
01/19/16	0.70	1711.7	2.14	1720.1	4.69	1714.1	0.33	1712.9	0.70	1713.1	3.75	1717.7	0.70	1710.0	1.01	1720.3	0.47	1719.9	7.50	1713.5
01/20/16	0.70	1711.7	2.14	1720.4	4.69	1712.9	0.35	1712.8	0.69	1713.1	3.75	1717.7	0.70	1710.0	1.10	1720.3	0.47	1719.8	7.50	1713.5
01/21/16	0.70	1711.7	2.14	1720.8	4.69	1713.3	0.35	1712.7	0.54	1713.1	3.75	1717.7	0.70	1710.0	1.53	1720.0	0.47	1719.9	7.50	1713.4
01/22/16	0.70	1711.7	2.14	1721.1	3.88	1714.3	0.35	1712.8	0.50	1713.2	3.75	1717.7	0.70	1710.0	1.50	1721.4	0.47	1720.0	7.50	1713.4
01/23/16	0.70	1711.7	2.14	1721.3	3.75	1714.7	0.35	1712.8	0.48	1713.2	3.75	1717.7	0.70	1710.0	1.47	1721.4	0.47	1720.0	7.50	1713.5
01/24/16	0.67	1711.7	2.14	1721.4	3.72	1714.6	0.34	1712.8	0.45	1713.4	3.72	1717.7	0.70	1710.0	1.44	1721.4	0.50	1720.0	7.45	1713.5
01/25/16	0.68	1716.8	3.02	1721.7	3.75	1718.4	0.29	1714.4	0.47	1715.0	3.75	1717.8	0.70	1710.0	0.90	1720.2	0.46	1720.2	7.50	1713.7
01/26/16	0.53	1716.2	2.27	1719.2	3.73	1717.9	0.29	1713.8	0.46	1714.1	3.73	1717.7	0.76	1710.0	0.66	1721.3	0.46	1720.0	7.47	1713.5
01/27/16	0.44	1717.5	2.29	1720.8	3.75	1719.3	0.27	1713.5	0.44	1714.4	3.52	1717.7	0.79	1710.0	0.10	1720.2	0.46	1720.2	7.04	1713.5
01/28/16	0.47	1718.1	2.31	1720.9	3.75	1719.6	0.30	1713.9	0.47	1715.1	3.75	1717.9	0.83	1710.0	0.60	1721.4	0.46	1720.2	7.49	1713.9
01/29/16	0.47	1718.4	2.33	1721.3	3.76	1720.0	0.35	1713.0	0.47	1715.4	3.75	1717.9	0.83	1710.0	0.44	1721.4	0.46	1720.4	7.50	1714.0
01/30/16	0.47	1718.3	2.36	1721.4	3.75	1720.5	0.35	1712.7	0.47	1715.5	3.75	1718.0	0.83	1710.0	0.00	1721.5	0.47	1720.5	7.50	1714.1
01/31/16	0.47	1718.3	2.39	1721.5	3.75	1720.7	0.35	1712.7	0.47	1715.5	3.75	1717.9	0.83	1710.0	0.07	1721.5	0.47	1720.5	7.50	1713.8
Monthly Average	0.63	1714.0	2.21	1716.7	3.86	1715.1	0.29	1715.1	0.64	1712.3	4.23	1716.7	0.73	1710.5	1.34	1721.2	0.63	1719.4	7.24	1713.6
Analytical <sup>1</sup>	Conc (mg/L)	Date	Conc (mg/L)	Date	Conc (mg/L)	Date	Conc (mg/L)	Date	Conc (mg/L)	Date	Conc (mg/L)	Date	Conc (mg/L)	Date	Conc (mg/L)	Date	Conc (mg/L)	Date	Conc (mg/L)	Date
Perchlorate	1500	1/19/2016	1400	1/19/2016	600	1/19/2016	2000	1/19/2016	2200	1/19/2016	980	1/19/2016	1100	1/19/2016	1200	1/19/2016	1600	1/19/2016	360	1/19/2016
Hexavalent Chromium	Future Metric - Enhanced Operations (to be collected by ETI) <sup>2</sup>																			
Total Chromium	22	1/19/2016	0.3	1/19/2016	1.1	1/19/2016	23	1/19/2016	22	1/19/2016	16	1/19/2016	17	1/19/2016	12	1/19/2016	0.59	1/19/2016	10	1/19/2016

Notes:  
 Flow reported as gpm is a daily average calculated from the totalizer reading. NA = Not Available  
 1: Analytical results are reported from TestAmerica.  
 2: Following contractual amendment agreements, ETI will begin collecting monthly hexavalent chromium samples.

Nevada Environmental Response Trust   Groundwater Extraction and Treatment System   Enhanced Operational Metrics																	
Date	LS #2	GWTP Effluent				GW-11 Influent				FBR Plant Influent <sup>1</sup>							
	Flow (gpm)	Flow (gpm)	TA - Cr (TR) <sup>2</sup> (mg/L)	TA - Cr (VI) (mg/L)	TA - ClO <sub>2</sub> (mg/L)	Flow (gpm)	Cr (TR) (mg/L)	Cr (VI) (mg/L)	ClO <sub>2</sub> (mg/L)	Flow (gpm)	TA - ClO <sub>2</sub> (mg/L)	ETI - ClO <sub>2</sub> (mg/L)	TA - ClO <sub>2</sub> (mg/L)	TA - SO <sub>4</sub> (mg/L)	TA - NO <sub>3</sub> - N (mg/L)	TA-Cr (TR) (mg/L)	TA-Cr (VI) (mg/L)
01/01/16	937	62				883				927		74					
01/02/16	921	63				877				915	89	84					
01/03/16	955	63				884				901		81					
01/04/16	909	59				877				912		80					
01/05/16	902	59				876	0.10	0.062	110	872		81					
01/06/16	999	61				873				919		80	160	1,400			
01/07/16	911	56	0.18	ND	920	869				919		69					
01/08/16	938	55				873				926		83					
01/09/16	954	56				858				935	79	80					
01/10/16	837	55				777				943		79					
01/11/16	941	54				785				939		81			9	0.036	0.031
01/12/16	931	53				783				940		81					
01/13/16	964	53				821				900		82					
01/14/16	936	53	0.18	ND	660	860				898		82					
01/15/16	938	55				861				897		82					
01/16/16	938	56				864				913	80	82					
01/17/16	937	57				866				932		74					
01/18/16	926	61				861				933		83					
01/19/16	937	55				863				932		82					
01/20/16	938	57				866				929		78			9	0.044	0.037
01/21/16	937	58	2.40	ND	770	871				932		79					
01/22/16	937	60				869				932		83					
01/23/16	937	61				869				940	90	76					
01/24/16	938	62				867				942		80					
01/25/16	925	55				876				941		79					
01/26/16	938	50				872				941		78					
01/27/16	937	46				864				935		80					
01/28/16	902	49	0.16	ND	790	853				939		79					
01/29/16	937	51				857				941		81					
01/30/16	938	51				873				937	86	80					
01/31/16	937	52				866				937		79					
Monthly Average	933	56	0.73	ND	785	859	0.10	0.062	110	926	85	80	160	1400	8.98	0.041	0.033

Notes:

Flow reported as gpm is a daily average calculated from the totalizer reading.

ND = Not detected above laboratory method detection limit (ClO<sub>2</sub> = 0.5 ug/L; ClO<sub>3</sub> = 10 ug/L; NO<sub>3</sub>-N= 0.055 mg/L, CR(VI) = 0.25 ug/L); NA = Not Available, sample result not reported.

1: ETI = Envirogen internal process control data, TA = TestAmerica data.

2: The chromium result provided by TestAmerica on January 21, 2016 is noted as unusually high. Due to a virus in the TestAmerica system, they were unable to confirm this value, but will test the sample again as soon as they are capable.

Table 4 - Treatment Plant Operational Metrics

Nevada Environmental Response Trust   Groundwater Extraction and Treatment System   Enhanced Operational Metrics															
Date	1st Stage FBR Influent			2nd Stage FBR Influent			FBR Plant Effluent <sup>1</sup>								
	Flow (gpm)	pH (s.u.)	ORP (mV)	Flow (gpm)	pH (s.u.)	ORP (mV)	Flow (gpm)	TA - ClO <sub>2</sub> (mg/L)	ETI - ClO <sub>2</sub> (mg/L)	TA - ClO <sub>3</sub> (mg/L)	TA-Cr (TR) (mg/L)	TA-Cr (VI) (mg/L)	TA - SO <sub>4</sub> (mg/L)	TA - NO <sub>3</sub> - N (mg/L)	ETI - Turbidity (NTU)
01/01/16	913	6.5	-366	846	7.01	-373	963		ND						15
01/02/16	928	6.5	-364	861	6.93	-366	942	ND	ND						16
01/03/16	891	6.4	-360	808	7.05	-384	898		ND						17
01/04/16	889	6.4	-363	812	7.43	-387	920		ND		0.007	ND		0.066	10
01/05/16	909	6.4	-367	821	7.66	-389	907		ND						30
01/06/16	920	6.4	-368	851	8.55	-393	903		ND	ND			1,400		46
01/07/16	918	6.5	-383	835	8.00	-394	874		ND						36
01/08/16	937	6.5	-373	858	7.75	-397	875		ND						32
01/09/16	935	6.4	-370	852	7.87	-399	867	ND	ND						35
01/10/16	956	6.5	-347	830	7.24	-395	879		ND						38
01/11/16	946	6.6	-378	858	7.83	-399	892		ND		0.022	ND		ND	20
01/12/16	946	6.6	-387	863	7.5	-400	886		ND						14
01/13/16	912	6.6	-391	817	7.2	-399	856		ND						12
01/14/16	912	6.7	-399	901	7.1	-398	844		ND						9
01/15/16	909	6.7	-401	899	7.1	-397	844		ND						9
01/16/16	936	6.6	-397	883	7.1	-397	857	ND	ND						20
01/17/16	934	6.6	-396	812	7.1	-397	869		ND						10
01/18/16	939	6.6	-395	821	8.3	-395	875		ND						11
01/19/16	937	6.5	-392	816	7.3	-394	891		ND		0.016	ND		ND	20
01/20/16	849	6.6	-393	891	8.6	-395	787		ND						22
01/21/16	909	6.6	-397	885	8.1	-398	878		ND						41
01/22/16	903	6.6	-399	565	8.1	-397	873		ND						53
01/23/16	960	6.6	-395	856	8.0	-398	865	ND	ND						99
01/24/16	955	6.6	-395	857	8.6	-396	922		ND						30
01/25/16	951	6.5	-394	896	8.2	-397	925		ND		0.014	ND		ND	39
01/26/16	934	6.6	-394	859	8.2	-399	928		ND						40
01/27/16	927	6.5	-361	903	7.4	-399	910		ND						38
01/28/16	938	6.6	-357	878	7.3	-398	895		ND						21
01/29/16	949	6.6	-341	876	8.6	-396	934		ND						35
01/30/16	938	6.7	-365	836	8.8	-392	948	ND	ND						21
01/31/16	940	6.7	-384	878	8.8	-396	953		ND						57
Monthly Average	927	6.5	-380	846	7.8	-394	892	ND	ND	ND	0.015	ND	1400	0.07	29

Notes:  
 Flow reported as gpm is a daily average calculated from the totalizer reading.  
 ND = Not detected above laboratory method detection limit (ClO<sub>2</sub> = 0.5 ug/L; ClO<sub>3</sub> = 10 ug/L; NO<sub>3</sub>-N = 0.055 mg/L, CR(VI) = 0.25 ug/L).  
 1: ETI = Envirogen internal process control data, TA = TestAmerica data.

GW-11 Level Monitoring		
Date	Field Measurement (ft)	Volume (MG)
1/11/2016	24.1	44.4
1/25/2016	24.2	44.3

GW-11 Leak Detection Monitoring				
Date	Amount Pumped <sup>1</sup> (gallons)			
	NW Corner	NE Corner	SW Corner	SE Corner
1/15/2016	0	0	0	0
1/28/2016	26	0	399	0

GW-11 Composite Sample <sup>2</sup>		
Analytes	Concentration	Units
Perchlorate	87	mg/L
Chlorate	160.0	mg/L
Ammonia as N	1.10	mg/L
Total Phosphorus	0.081	mg/L
Total Dissolved Solids (TDS)	5000	mg/L
Total Suspended Solids (TSS)	16	mg/L
pH	8.06	s.u.
Calcium	350	mg/L
Iron	0.410	mg/L
Chromium (total)	0.062	mg/L
Chromium VI	0.036	mg/L
Chloride	1400	mg/L
Nitrate as N	7.8	mg/L
Sulfate	1300	mg/L

## Notes:

ND = Not detected above laboratory method detection limit (NH<sub>3</sub>-N= 0.1 mg/L; Total P = .025 ug/L; CR(VI) = 0.25 ug/L).

1: Pumping occurs over three consecutive days. The total amount pumped over the three day period is listed with the last day pumping occurred.

2: Corner Composite Sample collected quarterly, most recent sampling results presented. Sampled on: January 18, 2016 by Envirogen.



Nevada Environmental Response Trust   Groundwater Extraction and Treatment System   Enhanced Operational Metrics						
Date	Flow <sup>1</sup> (gpm)	FBR Influent Concentration			Influent Function Load <sup>2</sup> (lbs/day)	6 Month Rolling Average (lbs/day)
		ClO <sub>4</sub> (mg/L)	NO <sub>3</sub> as N (mg/L)	ClO <sub>3</sub> (mg/L)		
Feb 2015	1021	101	7	210	738	625
Mar 2015	918	95	7	100	445	591
Apr 2015	916	97	7	140	520	570
May 2015	858	105	6	170	549	571
June 2015	824	108	6	170	532	554
July 2015	857	100	5	180	547	555
Aug 2015	891	87	6	160	516	518
Sep 2015	785	103	9	180	540	521
Oct 2015	950	86	6	180	587	542
Nov 2015	927	82	7	140	496	538
Dec 2015	919	76	9	160	537	537
Jan 2016	892	85	9	160	542	536

Notes:

Concentrations and flow are presented as monthly average.

1: Flow used in loading calculation is average monthly FBR effluent flow to be consistent with historical loading calculations.

2: FBR loading calculated as  $[0.9 \cdot \text{NO}_3 \text{ as N} + 0.17 \cdot \text{ClO}_3 + 0.18 \cdot \text{ClO}_4 \cdot \text{Flow} \cdot 1440 / 1000000 \cdot 8.34]$ .

Figure 1 - GW-11 Pond Volume and Perchlorate Concentration

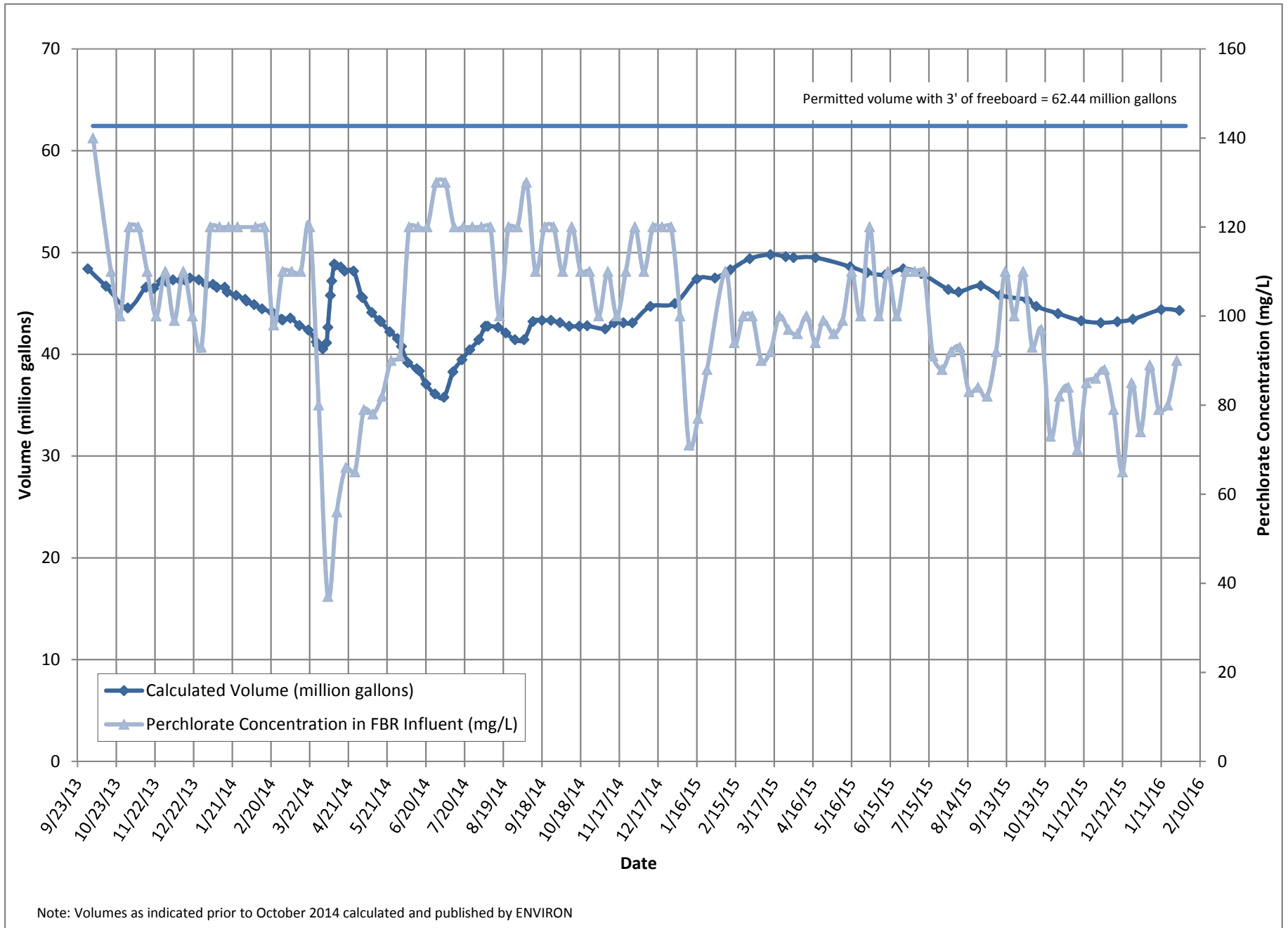


Figure 2 - FBR Equivalent Loading Calculation

