

Table 1 - Seep Well Field (SWF) Operational Metrics

Nevada Environmental Response Trust   Groundwater Extraction and Treatment System   Enhanced Operational Metrics																				
Date	LS #1 Flow (gpm)	East Well (PC-116R)		Center Well (PC99R3) Water		West Well (PC-115R)		PC 117		PC 118		PC 119		PC 120		PC 121		PC 133		
		Flow (gpm)	Water Elevation (ft amsl)	Flow (gpm)	Elevation <sup>6</sup> (ft amsl)	Flow (gpm)	Water Elevation (ft amsl)	Flow (gpm)	Water Elevation (ft amsl)	Flow (gpm)	Water Elevation (ft amsl)	Flow (gpm)	Water Elevation (ft amsl)	Flow (gpm)	Water Elevation (ft amsl)	Flow (gpm)	Water Elevation (ft amsl)	Flow (gpm)	Water Elevation (ft amsl)	
12/01/15	404	137	1538.7	64	1520.0	74	1543.5	73	1540.7	72	1546.5	72	1548.2	0	1550.2	0	1550.0	7	1520.0	
12/02/15	482	147	1539.4	73	1520.0	59	1547.0	73	1541.1	73	1547.2	73	1548.7	0	1550.5	0	1550.2	7	1520.0	
12/03/15	482	137	1539.1	69	1520.0	69	1543.5	72	1540.8	72	1546.7	72	1548.4	0	1550.3	0	1550.1	7	1520.0	
12/04/15	563	146	1539.0	73	1520.0	73	1539.0	73	1540.8	73	1546.7	73	1548.3	0	1550.3	0	1550.1	7	1520.0	
12/05/15	510	145	1538.9	63	1520.0	71	1538.9	73	1540.8	73	1546.7	73	1548.3	0	1550.2	0	1550.0	7	1520.0	
12/06/15	518	148	1538.9	74	1520.0	70	1538.9	73	1540.8	74	1546.7	74	1548.3	0	1550.2	0	1550.0	11	1520.0	
12/07/15	752	137	1538.9	71	1520.0	70	1538.9	73	1540.8	70	1546.7	74	1548.3	0	1550.3	0	1550.0	7	1520.0	
12/08/15	326	164	1538.9	69	1520.0	69	1538.9	95	1540.8	69	1546.8	73	1548.4	0	1550.3	0	1550.1	7	1520.0	
12/09/15	550	146	1540.1	70	1520.0	101	1540.1	95	1547.0	69	1549.6	40	1550.1	0	1551.1	0	1550.6	7	1520.0	
12/10/15	573	110	1539.7	87	1520.0	101	1544.6	87	1541.3	56	1547.2	44	1548.8	0	1550.7	0	1550.4	8	1520.0	
12/11/15	547	145	1539.7	86	1538.3	86	1544.6	86	1541.4	68	1547.2	58	1548.8	0	1550.7	0	1550.5	8	1550.3	
12/12/15	586	146	1539.7	87	1537.5	88	1544.4	88	1541.5	74	1547.3	59	1548.8	0	1550.8	0	1550.5	8	1550.3	
12/13/15	586	146	1539.7	88	1537.7	88	1544.5	88	1541.5	73	1547.3	59	1548.9	0	1550.8	0	1550.6	8	1550.3	
12/14/15	583	144	1539.7	86	1537.4	86	1544.5	87	1541.5	72	1547.4	57	1548.9	0	1550.9	0	1550.6	7	1550.4	
12/15/15	586	147	1539.8	87	1537.7	88	1544.5	88	1541.6	73	1547.4	59	1548.9	0	1550.9	0	1550.6	7	1550.4	
12/16/15	586	146	1539.8	88	1537.3	88	1544.5	88	1541.6	74	1547.4	58	1548.9	0	1550.9	0	1550.6	8	1550.4	
12/17/15	527	138	1539.8	70	1537.7	79	1544.5	84	1541.5	68	1547.4	55	1549.0	0	1550.9	0	1550.7	8	1550.4	
12/18/15	470	140	1540.0	70	1538.6	83	1544.6	84	1541.7	70	1547.5	56	1549.0	0	1551.0	0	1550.7	8	1550.5	
12/19/15	423	137	1540.0	68	1538.3	71	1544.7	84	1541.7	68	1547.6	55	1549.1	0	1551.0	0	1550.8	8	1550.5	
12/20/15	425	135	1540.2	68	1538.9	80	1544.8	80	1541.8	67	1547.7	53	1549.2	0	1551.0	0	1550.9	8	1550.6	
12/21/15	450	141	1540.3	71	1538.6	82	1544.8	85	1541.8	71	1547.7	57	1549.2	0	1551.1	0	1550.9	8	1550.6	
12/22/15	471	140	1540.4	67	1539.3	83	1545.0	84	1542.0	65	1547.8	56	1549.3	0	1551.3	0	1551.0	8	1550.8	
12/23/15	439	147	1540.3	74	1539.1	88	1544.8	88	1541.9	77	1547.8	59	1549.3	0	1551.2	0	1551.0	8	1550.7	
12/24/15	461	145	1540.2	79	1539.0	87	1544.8	87	1541.8	73	1547.8	58	1549.3	0	1551.2	0	1551.0	8	1550.7	
12/25/15	450	147	1540.1	88	1538.6	88	1544.8	88	1541.8	74	1547.7	58	1549.3	0	1551.2	0	1551.0	8	1550.7	
12/26/15	510	148	1540.1	89	1537.9	89	1544.8	89	1541.8	74	1547.7	59	1549.2	0	1551.2	0	1551.0	8	1550.7	
12/27/15	469	144	1540.1	86	1539.5	86	1544.8	86	1541.8	72	1547.7	57	1549.2	0	1551.2	0	1551.0	8	1550.7	
12/28/15	464	136	1540.1	87	1539.2	87	1544.8	87	1541.8	73	1547.7	58	1549.3	0	1551.2	0	1551.0	8	1550.7	
12/29/15	482	135	1540.1	91	1539.0	88	1544.8	91	1541.8	69	1547.7	61	1549.2	0	1551.2	0	1551.0	8	1520.0	
12/30/15	486	128	1540.1	87	1539.2	86	1544.8	87	1541.7	59	1547.7	58	1549.2	0	1551.2	0	1551.0	8	1520.0	
12/31/15	625	127	1540.0	86	1539.2	85	1544.8	86	1541.7	56	1547.7	57	1549.2	0	1551.2	0	1550.9	13	1520.0	
Monthly Average	509	137	1540.0	78	1538.4	82	1544.7	84	1541.7	69	1547.6	61	1549.1	0	1551.0	0	1550.8	8	1543.5	
Analytical <sup>1</sup>	Conc (mg/L)		Date		Conc (mg/L)		Date		Conc (mg/L)		Date		Conc (mg/L)		Date		Conc (mg/L)		Date	
Perchlorate	19		12/3/2015		20		12/3/2015		11		12/3/2015		12		12/3/2015		3.0		12/3/2015	
Hexavalent Chromium	0.0068		12/3/2015		0.0031		12/3/2015		ND		12/3/2015		ND		12/3/2015		ND		12/3/2015	
Total Chromium	0.0068		12/3/2015		0.0031		12/3/2015		ND		12/3/2015		ND		12/3/2015		ND		12/3/2015	

Notes:  
 Flow reported as gpm is a daily average calculated from the totalizer reading.  
 NA= Not Available; ND = Not detected above laboratory method detection limit (ClO<sub>2</sub> = 0.5 ug/L; ClO<sub>3</sub> = 10 ug/L; NO<sub>3</sub>-N = 0.055 mg/L, CR(VI) = 0.25 ug/L).  
 1: Analytical results are reported from TestAmerica.  
 2: Following contractual amendment agreements, ETI will begin collecting monthly hexavalent chromium samples.

Nevada Environmental Response Trust   Groundwater Extraction and Treatment System   Enhanced Operational Metrics																								
Date	LS #3	ART 1A/1B		ART 2A/2B		ART 3A/3B		ART 4A/4B		ART 6/9		ART 7A/7B		ART 8A/8B		PC-150								
	Flow (gpm)	Flow (gpm)	Water Elevation (ft amsl)	Flow (gpm)	Water Elevation (ft amsl)	Flow (gpm)	Water Elevation (ft amsl)	Flow (gpm)	Water Elevation (ft amsl)	Flow (gpm)	Water Elevation (ft amsl)	Flow (gpm)	Water Elevation (ft amsl)	Flow (gpm)	Water Elevation (ft amsl)	Flow (gpm)	Water Elevation (ft amsl)							
12/01/15	292	0	1592.2	38	1591.6	37	1587.8	9	1585.7	72	1576.8	18	1583.6	72	1583.9	4	1583.9							
12/02/15	291	0	1592.2	36	1591.5	36	1587.8	9	1587.7	74	1576.7	19	1583.2	74	1583.9	4	1584.4							
12/03/15	270	0	1592.1	34	1591.5	34	1587.7	9	1585.7	68	1576.7	29	1582.8	66	1583.8	4	1583.9							
12/04/15	293	0	1592.2	37	1591.5	37	1587.8	9	1585.7	73	1576.7	37	1583.2	73	1583.9	4	1584.3							
12/05/15	243	0	1592.1	36	1591.4	39	1587.7	9	1585.7	73	1576.7	36	1582.1	73	1583.7	4	1583.9							
12/06/15	251	0	1592.0	41	1591.4	40	1587.6	9	1585.7	75	1576.6	38	1580.6	74	1583.7	4	1583.8							
12/07/15	261	0	1592.0	40	1591.4	72	1587.6	10	1585.7	72	1576.7	36	1578.6	72	1583.7	4	1584.0							
12/08/15	271	0	1592.0	37	1591.3	50	1587.6	9	1585.5	37	1576.6	23	1578.0	49	1583.6	4	1583.3							
12/09/15	185	0	1592.2	44	1591.5	58	1587.9	4	1580.5	44	1576.7	29	1583.6	77	1583.9	4	1583.9							
12/10/15	287	0	1592.0	51	1591.3	48	1587.7	7	1584.2	74	1576.6	23	1581.7	83	1583.7	4	1583.8							
12/11/15	292	0	1591.9	51	1591.3	49	1587.6	7	1585.5	73	1576.6	23	1578.9	83	1583.6	4	1584.1							
12/12/15	293	0	1591.9	52	1591.2	49	1587.5	7	1585.6	74	1576.5	23	1578.0	81	1583.3	4	1584.4							
12/13/15	293	0	1591.9	51	1591.2	48	1587.5	7	1585.8	73	1576.6	23	1578.0	81	1583.5	4	1584.4							
12/14/15	292	0	1591.8	51	1591.2	48	1587.5	7	1585.8	73	1576.6	22	1578.0	80	1583.5	4	1584.3							
12/15/15	285	0	1591.8	50	1591.1	47	1587.5	6	1585.7	71	1576.6	23	1578.0	77	1583.4	4	1584.2							
12/16/15	290	0	1591.8	51	1591.1	48	1587.4	6	1585.7	73	1576.5	19	1578.0	74	1583.5	4	1583.8							
12/17/15	280	0	1591.8	46	1591.1	48	1587.6	7	1585.7	72	1576.6	22	1578.0	72	1587.2	4	1584.0							
12/18/15	291	0	1591.8	43	1591.1	47	1587.6	6	1585.7	72	1576.6	19	1578.0	72	1587.2	3	1584.7							
12/19/15	292	0	1591.8	45	1591.1	49	1587.7	6	1585.7	74	1576.6	20	1578.0	75	1587.2	4	1583.8							
12/20/15	285	0	1591.8	46	1591.1	47	1587.7	6	1575.0	71	1576.6	21	1578.0	72	1587.2	3	1585.0							
12/21/15	296	0	1591.8	57	1591.1	44	1587.7	7	1575.0	72	1576.5	21	1578.0	72	1587.2	4	1584.0							
12/22/15	256	0	1591.8	54	1591.1	45	1587.7	6	1575.0	74	1576.5	20	1578.0	75	1587.2	3	1583.8							
12/23/15	274	0	1591.8	51	1591.1	45	1587.7	7	1575.0	74	1576.6	19	1578.0	74	1587.2	4	1584.0							
12/24/15	288	0	1591.8	52	1591.1	45	1587.7	7	1575.0	73	1576.6	22	1578.0	74	1587.2	4	1584.9							
12/25/15	281	0	1591.8	57	1591.1	45	1587.7	6	1575.0	73	1576.6	22	1578.0	73	1587.2	4	1584.9							
12/26/15	319	0	1591.8	57	1591.1	44	1587.7	6	1575.0	72	1576.6	22	1578.0	73	1587.2	3	1584.0							
12/27/15	293	0	1591.8	57	1591.1	44	1587.7	6	1575.0	72	1576.6	21	1578.0	72	1587.2	4	1585.2							
12/28/15	284	0	1591.8	56	1591.1	44	1587.7	6	1575.0	67	1576.6	20	1578.0	66	1587.2	4	1584.6							
12/29/15	251	0	1591.8	59	1591.1	46	1587.7	7	1575.0	60	1576.6	20	1578.0	61	1587.2	3	1585.0							
12/30/15	232	0	1591.8	56	1591.1	44	1587.7	6	1575.0	58	1576.6	21	1578.0	58	1587.2	4	1584.1							
12/31/15	237	0	1591.8	56	1591.0	44	1587.7	6	1575.0	57	1576.6	22	1578.0	58	1587.2	3	1584.7							
Monthly Average	276	0	1591.8	48	1591.1	46	1587.6	7	1580.8	69	1576.6	24	1578.0	72	1586.1	4	1584.4							
Analytical <sup>1</sup>	Conc (mg/L)		Date	Conc (mg/L)		Date	Conc (mg/L)		Date	Conc (mg/L) <sup>2</sup>		Date	Conc (mg/L)		Date	Conc (mg/L)		Date						
Perchlorate	14		12/3/2015	25		12/3/2015	210		12/3/2015	270		12/3/2015	240		12/3/2015	130		12/3/2015	130		12/3/2015	230		12/3/2015
Hexavalent Chromium	Future Metric - Enhanced Operations (to be collected by ETI) <sup>3</sup>																							
Total Chromium	0.0092		12/3/2015	0.0066		12/3/2015	0.29		12/3/2015	0.45		12/3/2015	0.87		12/3/2015	0.64		12/3/2015	0.098		12/3/2015	0.33		12/3/2015

Notes:  
 Flow reported as gpm is a daily average calculated from the totalizer reading. NA = Not Available.  
 1: Analytical results are reported from TestAmerica.  
 2: Concentrations reported for ART-9.  
 3: Following contractual amendment agreements, ETI will begin collecting monthly hexavalent chromium samples.

Table 3 - Interceptor Well Field (IWF) Operational Metrics

Nevada Environmental Response Trust   Groundwater Extraction and Treatment System   Enhanced Operational Metrics																				
Date	I-AR		I-AA		I-AB		I-AC		I-AD		I-B		I-C		I-D		I-E		I-F	
	Flow (gpm)	Water Elevation (ft. amsl)	Flow (gpm)	Water Elevation (ft. amsl)	Flow (gpm)	Water Elevation (ft. amsl)	Flow (gpm)	Water Elevation (ft. amsl)	Flow (gpm)	Water Elevation (ft. amsl)	Flow (gpm)	Water Elevation (ft. amsl)	Flow (gpm)	Water Elevation (ft. amsl)	Flow (gpm)	Water Elevation (ft. amsl)	Flow (gpm)	Water Elevation (ft. amsl)	Flow (gpm)	Water Elevation (ft. amsl)
12/01/15	0.54	1715.4	1.17	1708.0	0.00	1721.0	0.00	1723.7	0.00	1725.2	0.59	1709.3	3.34	1710.0	1.76	1722.7	1.17	1716.2	4.69	1719.8
12/02/15	0.55	1715.4	1.16	1708.0	0.00	1720.9	0.00	1723.7	0.00	1725.2	0.58	1709.5	2.91	1717.9	1.75	1722.5	1.16	1716.8	4.66	1720.1
12/03/15	0.57	1715.4	1.16	1708.0	0.00	1720.8	0.00	1710.0	0.00	1710.0	0.58	1709.4	2.38	1718.0	1.74	1722.4	1.16	1717.0	4.64	1720.3
12/04/15	0.40	1715.3	1.27	1708.0	0.00	1720.8	0.00	1710.0	0.00	1710.0	0.67	1709.4	2.55	1718.1	1.93	1722.4	0.59	1717.2	4.68	1720.4
12/05/15	0.55	1715.4	1.18	1708.0	0.00	1720.7	0.00	1710.0	0.00	1710.0	0.60	1709.3	2.68	1718.1	2.09	1722.3	1.31	1717.4	2.93	1720.5
12/06/15	0.55	1715.7	1.20	1708.0	0.00	1720.7	0.00	1710.0	0.00	1710.0	0.60	1709.3	2.72	1718.2	3.75	1722.3	1.29	1717.5	2.97	1720.6
12/07/15	0.53	1715.9	1.18	1708.0	0.00	1720.7	0.00	1710.0	0.00	1710.0	0.60	1709.3	2.97	1718.2	2.08	1722.3	1.04	1717.6	4.18	1720.7
12/08/15	0.59	1716.1	1.17	1708.0	0.00	1720.7	0.00	1723.7	0.00	1725.2	0.60	1709.3	2.38	1718.3	1.66	1722.4	1.17	1717.7	3.52	1720.7
12/09/15	0.57	1716.0	1.14	1708.0	0.00	1720.7	0.00	1723.7	0.00	1725.2	0.58	1709.3	2.66	1718.5	1.15	1722.4	1.13	1717.7	3.40	1720.8
12/10/15	0.55	1716.4	1.20	1708.0	0.00	1720.7	0.00	1723.7	0.00	1725.2	0.60	1709.3	2.62	1722.4	1.17	1722.5	1.10	1717.8	3.04	1720.7
12/11/15	0.55	1716.3	1.21	1708.0	0.00	1720.7	0.00	1723.7	0.00	1725.2	0.60	1709.3	2.65	1722.7	1.97	1722.7	1.09	1718.0	2.81	1721.0
12/12/15	0.55	1716.4	1.21	1708.0	0.00	1720.7	0.00	1723.7	0.00	1725.2	0.61	1709.3	2.67	1723.2	1.98	1723.2	1.16	1718.1	3.04	1721.0
12/13/15	0.54	1716.6	1.20	1708.0	0.00	1720.7	0.00	1723.7	0.00	1725.2	0.61	1709.3	2.67	1723.3	1.97	1723.3	1.14	1718.2	3.04	1721.1
12/14/15	0.18	1716.9	0.81	1708.0	0.00	1720.7	0.00	1723.7	0.00	1725.2	0.44	1709.3	2.66	1723.4	1.71	1723.4	1.12	1718.3	2.91	1721.1
12/15/15	0.00	1728.4	0.73	1717.1	0.00	1717.4	0.00	1723.7	0.00	1725.2	0.59	1712.7	2.61	1723.8	1.66	1723.3	1.13	1718.3	2.94	1721.1
12/16/15	0.00	1729.4	0.75	1709.7	0.00	1720.0	0.00	1723.7	0.00	1725.2	0.68	1709.4	2.65	1723.6	1.66	1723.4	1.13	1718.4	2.86	1721.2
12/17/15	0.75	1729.5	0.76	1715.6	0.00	1716.2	0.00	1723.7	0.00	1725.2	0.67	1709.6	2.65	1722.8	1.73	1723.5	1.12	1718.5	2.62	1721.3
12/18/15	0.63	1715.4	0.75	1709.1	0.00	1714.9	0.00	1723.7	0.00	1718.2	0.66	1709.7	2.65	1723.2	1.81	1723.6	1.13	1718.7	2.89	1721.3
12/19/15	0.62	1715.1	0.76	1717.9	0.00	1718.6	0.00	1723.7	0.00	1712.5	0.66	1709.4	2.65	1723.3	1.79	1723.7	1.13	1718.9	2.90	1722.4
12/20/15	0.63	1715.4	0.75	1715.4	0.00	1714.4	0.00	1723.7	0.00	1714.1	0.66	1709.5	2.65	1723.3	1.76	1723.7	1.13	1719.0	2.71	1722.6
12/21/15	0.63	1715.3	0.77	1717.9	0.00	1719.7	0.00	1723.6	0.00	1717.1	0.67	1709.6	2.65	1723.3	1.73	1723.7	1.13	1719.0	2.82	1721.8
12/22/15	0.62	1715.2	0.98	1711.0	0.00	1721.1	0.00	1723.7	0.00	1725.1	0.66	1709.6	3.22	1723.4	1.30	1723.8	1.15	1719.1	3.56	1721.8
12/23/15	0.61	1715.1	1.05	1711.6	0.00	1721.0	0.00	1723.7	0.00	1725.1	0.65	1709.4	3.75	1717.0	1.52	1723.3	1.14	1718.2	3.75	1721.4
12/24/15	0.62	1715.6	1.05	1715.6	0.00	1721.0	0.00	1723.7	0.00	1725.1	0.65	1709.3	3.74	1716.7	1.50	1723.1	1.01	1718.1	3.75	1721.3
12/25/15	0.61	1715.2	1.06	1711.5	0.00	1720.9	0.00	1723.6	0.00	1725.1	0.65	1709.3	3.75	1716.5	1.47	1723.0	0.80	1718.0	3.75	1721.2
12/26/15	0.62	1715.7	1.00	1711.5	0.00	1720.9	0.00	1723.6	0.00	1725.1	0.65	1709.4	3.67	1716.3	1.50	1723.0	0.56	1718.0	3.75	1721.2
12/27/15	0.61	1715.3	0.94	1711.5	0.00	1720.9	0.00	1723.6	0.00	1725.1	0.65	1709.4	3.53	1716.3	1.51	1722.9	0.45	1718.0	3.75	1721.2
12/28/15	0.61	1715.7	0.93	1711.5	0.00	1720.9	0.00	1723.6	0.00	1725.1	0.64	1709.4	3.52	1716.3	1.44	1723.0	0.35	1718.0	3.75	1721.0
12/29/15	0.61	1715.4	1.05	1712.3	0.00	1720.9	0.00	1723.6	0.00	1725.1	0.64	1709.3	4.09	1716.4	2.00	1722.9	1.43	1718.0	4.53	1721.2
12/30/15	0.60	1715.2	1.17	1709.0	0.00	1720.9	0.00	1723.6	0.00	1725.1	0.64	1709.3	4.22	1712.4	2.11	1722.6	1.48	1717.1	4.69	1720.7
12/31/15	0.61	1715.7	1.17	1709.7	0.00	1720.9	0.00	1723.6	0.00	1725.1	0.64	1709.3	4.21	1712.7	1.98	1722.5	1.41	1717.0	4.69	1720.6
Monthly Average	0.54	1718.8	1.03	1712.1	0.00	1719.2	0.00	1723.7	0.00	1722.8	0.62	1709.7	3.03	1720.1	1.78	1723.2	1.07	1718.2	3.56	1721.3
Analytical <sup>1</sup>	Conc (mg/L)	Date	Conc (mg/L)	Date	Conc (mg/L)	Date	Conc (mg/L)	Date	Conc (mg/L)	Date	Conc (mg/L)	Date	Conc (mg/L)	Date	Conc (mg/L)	Date	Conc (mg/L)	Date	Conc (mg/L)	Date
Perchlorate	2400	12/8/2015	110	12/8/2015	390	12/8/2015	NA <sup>2</sup>	NA <sup>2</sup>	130	12/7/2015	540	12/8/2015	700	12/8/2015	700	12/8/2015	1000	12/8/2015	1400	12/8/2015
Hexavalent Chromium	Future Metric - Enhanced Operations (to be collected by ETI) <sup>3</sup>																			
Total Chromium	0.4	12/8/2015	0.056	12/8/2015	0.033	12/8/2015	NA <sup>2</sup>	NA <sup>2</sup>	0.8	12/7/2015	0.13	12/8/2015	2.8	12/8/2015	6.2	12/8/2015	10	12/8/2015	20	12/8/2015

Notes:  
 Flow reported as gpm is a daily average calculated from the totalizer reading. NA=Not Available.  
 1: Analytical results are reported from TestAmerica.  
 2: NA= Not Available. Well I-AC was dry and no sample could be collected.  
 3: Following contractual amendment agreements, ETI will begin collecting monthly hexavalent chromium samples.

Table 3 - Interceptor Well Field (IWF) Operational Metrics

Nevada Environmental Response Trust   Groundwater Extraction and Treatment System   Enhanced Operational Metrics																				
Date	I-G		I-H		I-I		I-J		I-K		I-L		I-M		I-N		I-O		I-P	
	Flow (gpm)	water Elevation (ft amsl)	Flow (gpm)	water Elevation (ft amsl)	Flow (gpm)	water Elevation (ft amsl)	Flow (gpm)	water Elevation (ft amsl)	Flow (gpm)	water Elevation (ft amsl)	Flow (gpm)	water Elevation (ft amsl)	Flow (gpm)	water Elevation (ft amsl)	Flow (gpm)	water Elevation (ft amsl)	Flow (gpm)	water Elevation (ft amsl)	Flow (gpm)	water Elevation (ft amsl)
12/01/15	0.26	1710.8	1.19	1718.4	4.38	1722.0	9.38	1711.9	2.34	1718.9	1.88	1711.4	1.27	1719.8	2.66	1719.2	2.04	1710.0	2.91	1709.7
12/02/15	0.20	1710.9	0.72	1717.2	4.38	1723.7	8.23	1707.8	2.34	1719.0	1.85	1721.2	1.38	1721.1	2.33	1719.3	0.44	1710.0	0.54	1709.7
12/03/15	0.20	1710.0	0.76	1707.0	4.38	1710.0	10.58	1705.0	2.34	1706.0	1.77	1711.2	1.50	1721.0	2.32	1719.3	1.04	1710.0	2.33	1705.0
12/04/15	0.17	1710.0	1.87	1707.0	4.38	1710.0	6.26	1705.0	2.34	1706.0	2.89	1711.3	5.30	1721.0	0.66	1719.5	1.08	1710.0	2.65	1705.0
12/05/15	0.17	1710.0	1.26	1707.0	4.37	1710.0	7.27	1705.0	2.34	1706.0	1.74	1711.4	1.49	1721.4	1.48	1719.8	1.15	1710.0	2.88	1705.0
12/06/15	0.18	1710.0	1.27	1707.0	4.37	1710.0	7.09	1705.0	2.34	1706.0	1.75	1711.2	1.51	1721.4	1.48	1719.8	1.23	1710.0	2.89	1705.0
12/07/15	0.20	1710.0	1.20	1707.0	4.38	1710.0	8.31	1705.0	2.25	1706.0	2.01	1711.2	2.69	1721.4	2.02	1720.2	1.27	1710.0	2.52	1705.0
12/08/15	0.15	1714.2	1.18	1717.8	4.79	1722.0	8.16	1707.1	2.10	1719.2	1.71	1711.2	2.16	1721.4	1.18	1720.5	0.44	1721.7	2.94	1709.5
12/09/15	0.18	1714.2	1.14	1718.0	4.57	1721.8	5.63	1707.0	2.22	1719.2	1.79	1711.2	2.29	1721.4	1.14	1720.5	0.42	1721.7	2.85	1709.4
12/10/15	0.14	1717.9	1.18	1718.5	4.88	1722.0	7.37	1707.1	2.27	1718.8	1.79	1711.4	2.42	1721.6	1.10	1722.7	0.44	1721.7	3.04	1709.6
12/11/15	0.17	1713.5	1.07	1718.7	4.93	1722.2	7.49	1707.1	2.23	1719.1	1.79	1711.3	2.55	1721.7	0.87	1723.4	0.51	1721.8	3.08	1709.7
12/12/15	0.28	1711.2	1.05	1719.3	4.92	1722.2	7.50	1707.1	2.23	1719.2	1.81	1711.4	2.16	1722.2	0.88	1723.2	0.47	1721.7	3.06	1709.9
12/13/15	0.27	1711.2	1.05	1719.2	4.92	1722.2	7.56	1707.1	2.14	1719.3	1.83	1711.2	2.26	1722.3	0.84	1723.4	0.47	1721.7	3.08	1710.1
12/14/15	0.23	1711.3	1.05	1719.2	4.92	1722.3	7.62	1707.3	2.11	1719.4	1.98	1711.4	1.08	1722.4	0.82	1723.6	0.50	1721.8	3.08	1709.7
12/15/15	0.21	1713.1	1.04	1719.4	4.85	1722.3	7.39	1707.3	2.11	1719.4	1.88	1715.1	1.09	1722.5	0.82	1723.7	0.51	1721.7	3.10	1709.8
12/16/15	0.22	1712.1	0.97	1719.4	5.00	1721.9	7.06	1707.1	2.05	1719.4	1.87	1718.3	1.02	1722.6	0.68	1727.2	0.50	1721.7	3.05	1709.8
12/17/15	0.18	1713.4	0.88	1719.6	5.01	1721.7	6.97	1707.0	2.06	1719.4	1.67	1719.6	0.88	1722.8	0.50	1725.0	0.47	1721.6	2.88	1709.8
12/18/15	0.16	1711.8	0.87	1719.7	5.09	1721.6	6.03	1707.0	2.03	1719.4	1.64	1717.2	0.83	1723.0	0.47	1725.6	0.51	1721.5	2.81	1709.4
12/19/15	0.20	1712.6	0.86	1719.7	5.08	1721.6	6.96	1707.0	1.88	1719.5	1.64	1717.5	0.83	1723.1	0.47	1725.8	0.50	1721.4	2.74	1709.4
12/20/15	0.16	1711.0	0.84	1719.6	5.05	1721.5	7.08	1707.0	3.30	1719.5	1.64	1717.3	0.82	1723.1	0.47	1725.8	0.48	1721.3	2.59	1709.4
12/21/15	0.17	1718.8	0.84	1719.5	5.04	1721.4	0.00	1707.0	0.58	1719.5	1.34	1717.2	0.82	1723.2	0.43	1725.9	0.47	1721.3	2.58	1709.4
12/22/15	0.18	1717.7	0.84	1719.5	5.02	1721.4	7.02	1707.0	1.88	1719.6	1.93	1719.9	1.87	1723.3	1.89	1725.7	0.53	1721.3	2.56	1709.4
12/23/15	0.16	1715.7	0.82	1719.4	5.01	1721.4	5.52	1707.0	1.88	1719.6	2.11	1711.6	2.11	1722.0	2.15	1722.4	0.45	1721.2	2.39	1709.4
12/24/15	0.19	1712.7	0.83	1719.3	5.05	1721.3	6.57	1707.1	1.87	1719.7	2.10	1711.4	2.03	1722.0	2.11	1723.2	0.42	1721.2	2.38	1709.4
12/25/15	0.20	1711.6	0.82	1719.3	4.76	1721.2	6.56	1707.0	1.78	1719.7	1.94	1711.4	1.99	1721.8	2.11	1723.6	0.43	1721.2	2.37	1709.4
12/26/15	0.21	1711.4	0.83	1719.2	4.69	1721.2	6.57	1707.0	1.64	1719.7	1.88	1711.3	1.99	1721.7	2.11	1724.9	0.43	1721.1	2.38	1709.4
12/27/15	0.19	1711.4	0.82	1719.1	4.69	1721.1	6.56	1707.0	1.64	1719.7	1.87	1711.3	1.99	1721.7	2.10	1725.4	0.42	1721.1	2.38	1709.4
12/28/15	0.20	1718.3	0.82	1719.2	4.69	1721.1	6.56	1707.0	1.64	1719.7	1.88	1711.3	1.89	1721.7	1.88	1725.8	0.42	1721.1	2.37	1709.4
12/29/15	0.19	1712.3	1.08	1719.1	4.69	1721.1	6.56	1707.0	1.64	1719.8	1.91	1711.3	2.27	1721.7	3.25	1726.2	1.59	1721.1	2.33	1709.0
12/30/15	0.20	1715.3	1.07	1709.4	4.69	1721.0	6.56	1707.0	1.68	1719.8	1.88	1711.3	2.34	1721.2	3.52	1719.2	1.65	1715.0	2.23	1709.5
12/31/15	0.20	1711.7	1.02	1709.4	4.69	1721.0	6.56	1707.0	1.41	1719.8	1.88	1711.2	2.34	1721.0	3.52	1719.7	1.55	1715.1	2.17	1709.5
Monthly Average	0.19	1712.7	1.01	1717.8	4.76	1721.6	6.94	1707.1	2.02	1719.5	1.86	1714.2	1.85	1722.2	1.56	1724.3	0.74	1720.5	2.62	1709.6
Analytical <sup>1</sup>	Conc (mg/L)	Date	Conc (mg/L)	Date	Conc (mg/L)	Date	Conc (mg/L)	Date	Conc (mg/L)	Date	Conc (mg/L)	Date	Conc (mg/L)	Date	Conc (mg/L)	Date	Conc (mg/L)	Date	Conc (mg/L)	Date
Perchlorate	1700	12/7/2015	2000	12/7/2015	950	12/8/2015	270	12/7/2015	240	12/7/2015	1000	12/8/2015	1000	12/8/2015	910	12/8/2015	1100	12/7/2015	1200	12/7/2015
Hexavalent Chromium	Future Metric - Enhanced Operations (to be collected by ETI) <sup>3</sup>																			
Total Chromium	20	12/7/2015	18	12/7/2015	12	12/8/2015	3	12/7/2015	2	12/7/2015	0.6	12/8/2015	9.3	12/8/2015	10	12/8/2015	13	12/7/2015	12	12/7/2015

Notes:  
 Flow reported as gpm is a daily average calculated from the totalizer reading. NA=Not Available.  
 1: Analytical results are reported from TestAmerica.  
 3: Following contractual amendment agreements, ETI will begin collecting monthly hexavalent chromium samples.

Table 3 - Interceptor Well Field (IWF) Operational Metrics

Nevada Environmental Response Trust   Groundwater Extraction and Treatment System   Enhanced Operational Metrics																				
Date	I-Q		I-R		I-S		I-T		I-U		I-V		I-W		I-X		I-Y		I-Z	
	Flow (gpm)	Water Elevation (ft amsl)	Flow (gpm)	Water Elevation (ft amsl)	Flow (gpm)	Water Elevation (ft amsl)	Flow (gpm)	Water Elevation (ft amsl)	Flow (gpm)	Water Elevation (ft amsl)	Flow (gpm)	Water Elevation (ft amsl)	Flow (gpm)	Water Elevation (ft amsl)	Flow (gpm)	Water Elevation (ft amsl)	Flow (gpm)	Water Elevation (ft amsl)	Flow (gpm)	Water Elevation (ft amsl)
12/01/15	0.42	1712.1	2.39	1708.7	4.69	1710.0	0.44	1707.8	0.87	1707.4	4.69	1721.0	1.03	1712.8	1.07	1721.3	1.51	1707.8	6.12	1723.7
12/02/15	0.42	1712.1	2.33	1709.2	4.66	1710.0	0.20	1708.4	0.87	1708.4	4.57	1720.7	0.19	1710.0	2.54	1721.4	1.50	1706.6	6.22	1718.9
12/03/15	0.42	1710.0	2.28	1709.2	4.64	1710.0	0.21	1705.0	0.88	1705.0	4.67	1710.0	0.27	1710.0	2.42	1721.6	1.28	1705.0	6.22	1710.0
12/04/15	0.42	1710.0	2.36	1708.8	4.53	1710.0	0.22	1705.0	0.76	1705.0	3.78	1710.0	0.29	1710.0	2.47	1721.7	1.13	1715.1	6.30	1710.0
12/05/15	0.70	1710.0	2.00	1709.5	3.65	1710.0	0.22	1705.0	0.84	1705.0	4.43	1710.0	0.31	1710.0	2.44	1721.5	1.47	1705.1	7.37	1710.0
12/06/15	0.71	1710.0	2.03	1710.1	3.69	1710.0	0.23	1705.0	0.85	1705.0	4.25	1710.0	0.34	1710.0	2.38	1721.9	1.49	1705.0	7.16	1710.0
12/07/15	0.50	1710.0	2.28	1709.5	4.36	1710.0	0.24	1705.0	0.85	1705.0	4.44	1710.0	0.37	1710.0	2.32	1722.0	1.40	1706.2	6.52	1710.0
12/08/15	0.47	1714.3	2.00	1709.8	3.52	1710.0	0.33	1712.6	0.84	1712.6	4.21	1719.8	0.40	1721.8	2.23	1722.0	1.72	1705.0	7.03	1716.3
12/09/15	0.47	1715.4	1.96	1709.8	3.45	1710.0	0.29	1712.9	0.42	1712.9	4.10	1719.6	0.31	1721.8	0.79	1722.1	1.70	1705.0	6.69	1715.7
12/10/15	0.50	1719.1	2.02	1709.5	3.77	1710.0	0.29	1714.0	0.78	1714.0	4.42	1719.8	0.33	1721.8	2.15	1720.7	1.54	1705.2	6.76	1722.6
12/11/15	0.29	1719.9	2.04	1708.9	3.95	1710.0	0.19	1714.0	0.76	1721.7	4.33	1719.9	0.34	1721.9	2.11	1722.2	1.49	1707.3	6.83	1722.9
12/12/15	0.77	1712.1	2.05	1709.1	4.01	1710.0	0.20	1715.4	0.90	1707.5	4.25	1720.0	0.24	1721.3	2.06	1721.4	1.50	1711.1	6.91	1723.0
12/13/15	0.77	1711.7	2.05	1710.0	4.07	1710.0	0.21	1715.2	0.88	1707.2	4.25	1720.0	0.24	1721.3	2.01	1722.3	1.51	1708.6	6.84	1723.0
12/14/15	0.76	1711.7	1.40	1709.5	3.88	1710.0	0.21	1715.2	0.37	1707.4	4.25	1720.0	0.21	1721.3	1.95	1722.4	1.16	1708.7	6.80	1723.1
12/15/15	0.76	1712.0	2.04	1714.3	3.81	1723.1	0.24	1715.3	0.45	1721.6	4.23	1720.0	0.03	1721.4	1.90	1721.7	1.10	1717.2	5.64	1723.1
12/16/15	0.77	1712.2	2.36	1709.9	3.91	1723.4	0.23	1715.5	0.58	1719.3	4.09	1719.7	0.08	1721.8	1.85	1722.5	1.07	1717.4	6.73	1716.9
12/17/15	0.63	1711.7	2.32	1709.0	4.63	1723.5	0.22	1715.8	0.75	1714.6	4.14	1719.6	0.65	1721.8	2.00	1722.6	1.04	1717.7	6.96	1716.1
12/18/15	0.79	1711.9	2.27	1709.0	4.54	1711.9	0.21	1716.0	0.77	1709.9	4.22	1719.5	0.90	1713.8	1.98	1722.0	0.95	1717.6	7.03	1715.7
12/19/15	0.81	1711.9	2.27	1709.6	4.50	1714.7	0.22	1717.9	0.80	1710.1	4.22	1719.3	0.89	1716.1	1.97	1723.1	0.92	1717.9	7.03	1715.4
12/20/15	0.81	1711.7	2.25	1708.8	4.45	1714.0	0.22	1717.9	0.81	1710.0	4.22	1719.2	0.86	1711.1	1.95	1723.2	0.93	1718.0	7.03	1715.2
12/21/15	0.81	1711.7	2.27	1709.3	4.54	1717.1	0.22	1717.9	0.81	1710.0	4.22	1719.1	0.86	1718.2	1.94	1723.0	0.94	1717.9	7.03	1714.9
12/22/15	0.81	1711.8	2.25	1708.8	4.41	1712.6	0.23	1716.2	0.80	1710.0	4.22	1719.1	0.86	1714.1	1.94	1722.4	0.93	1718.0	7.04	1714.8
12/23/15	0.81	1711.7	2.22	1709.2	4.04	1711.5	0.22	1716.1	0.76	1710.1	4.22	1719.0	0.85	1711.2	1.95	1722.8	0.92	1717.7	7.03	1714.7
12/24/15	0.80	1712.1	2.19	1709.3	3.90	1715.2	0.22	1718.0	0.76	1710.2	4.22	1719.0	0.84	1713.0	1.96	1722.7	0.93	1717.7	7.03	1714.6
12/25/15	0.80	1711.7	2.22	1709.7	3.84	1711.0	0.22	1717.9	0.76	1710.1	4.22	1718.9	0.81	1714.4	1.96	1722.6	0.94	1717.8	6.90	1714.4
12/26/15	0.80	1712.0	2.24	1709.0	3.85	1714.5	0.22	1717.9	0.78	1710.2	4.22	1718.8	0.83	1719.2	1.95	1722.6	0.93	1717.7	6.57	1714.2
12/27/15	0.80	1712.1	2.23	1709.8	3.82	1717.0	0.22	1717.9	0.82	1710.2	4.22	1718.7	0.79	1712.2	1.00	1722.6	0.92	1717.7	6.56	1714.1
12/28/15	0.80	1712.2	2.22	1708.8	3.75	1713.5	0.22	1718.0	0.82	1710.3	4.41	1718.7	0.81	1719.7	1.82	1720.5	0.92	1717.9	6.56	1714.1
12/29/15	0.79	1711.8	2.19	1709.1	3.79	1715.4	0.23	1718.0	0.86	1710.2	4.69	1718.7	0.74	1717.6	1.80	1722.6	0.92	1718.0	6.56	1714.0
12/30/15	0.78	1712.2	2.19	1708.9	3.75	1715.7	0.23	1712.7	0.82	1707.4	4.69	1718.5	0.73	1717.3	1.78	1722.2	0.89	1718.1	6.56	1714.0
12/31/15	0.55	1712.2	2.18	1709.9	3.66	1718.0	0.24	1713.1	0.82	1708.5	4.69	1718.3	0.68	1712.7	1.75	1722.1	0.94	1718.1	6.56	1713.9
Monthly Average	0.67	1711.9	2.16	1709.7	4.07	1716.2	0.24	1716.0	0.77	1711.3	4.31	1719.2	0.55	1717.5	1.95	1722.3	1.18	1716.4	6.73	1716.8
Analytical <sup>1</sup>	Conc (mg/L)	Date	Conc (mg/L)	Date	Conc (mg/L)	Date	Conc (mg/L)	Date	Conc (mg/L)	Date	Conc (mg/L)	Date	Conc (mg/L)	Date	Conc (mg/L)	Date	Conc (mg/L)	Date	Conc (mg/L)	Date
Perchlorate	1500	12/7/2015	1400	12/8/2015	840	12/8/2015	2100	12/7/2015	1800	12/7/2015	820	12/7/2015	1100	12/7/2015	1400	12/8/2015	1600	12/8/2015	370	12/7/2015
Hexavalent Chromium	Future Metric - Enhanced Operations (to be collected by ETI) <sup>3</sup>																			
Total Chromium	20	12/7/2015	0.35	12/8/2015	1.3	12/8/2015	22	12/7/2015	19	12/7/2015	7.8	12/7/2015	14	12/7/2015	14	12/8/2015	0.51	12/8/2015	7.1	12/7/2015

Notes:  
 Flow reported as gpm is a daily average calculated from the totalizer reading. NA = Not Available  
 1: Analytical results are reported from TestAmerica.  
 3: Following contractual amendment agreements, ETI will begin collecting monthly hexavalent chromium samples.

Nevada Environmental Response Trust   Groundwater Extraction and Treatment System   Enhanced Operational Metrics																	
Date	LS #2	GWTP Effluent				GW-11 Influent				FBR Plant Influent <sup>1</sup>							
	Flow (gpm)	Flow (gpm)	TA - Cr (TR) (mg/L)	TA - Cr (VI) (mg/L)	TA - ClO <sub>2</sub> (mg/L)	Flow (gpm)	Cr (TR) (mg/L)	Cr (VI) (mg/L)	ClO <sub>2</sub> (mg/L)	Flow (gpm)	TA - ClO <sub>2</sub> (mg/L)	ETI - ClO <sub>2</sub> (mg/L)	TA - ClO <sub>2</sub> (mg/L)	TA - SO <sub>4</sub> (mg/L)	TA - NO <sub>3</sub> - N (mg/L)	TA-Cr (TR) (mg/L)	TA-Cr (VI) (mg/L)
12/01/15	796	77				734				882		67					
12/02/15	796	72				894				940		78					
12/03/15	796	68	0.13	ND	840					939		71					
12/04/15	796	67				888				933		74					
12/05/15	796	62				888				933	79	75					
12/06/15	796	53				890				926		60					
12/07/15	796	55				880				923		76	160	1,200	7	0.047	0.0280
12/08/15	796	55				642				911		73					
12/09/15	591	48				824	0.13	0.05	110	916		74					
12/10/15	917	47	0.24	ND	750					918		73					
12/11/15	784	44				379				370		73					
12/12/15 <sup>2</sup>	782	47				0				829	65	81					
12/13/15 <sup>2</sup>	780	47				0				828		83					
12/14/15 <sup>2</sup>	778	43				0				821		76		11	0.028	0	
12/15/15 <sup>2</sup>	775	53				0				828		79					
12/16/15 <sup>2</sup>	866	58				0				924		79					
12/17/15	811	60	0.40	ND	840	784				906		70					
12/18/15	818	58				836				1066		71					
12/19/15	803	61				812				825	85	73					
12/20/15	675	48				815				935		73					
12/21/15	822	48				829				927		73					
12/22/15	827	56				856				925		73		8	0.043	0.023	
12/23/15	787	57				857				926		75					
12/24/15	855	56	0.15	ND	690	877				923		74					
12/25/15	826	55				869				922		77					
12/26/15	983	55				861				920	74	80					
12/27/15	937	58				869				923		88					
12/28/15	910	56				869				930		82					
12/29/15	964	61				884				925		77			8	0.041	0.027
12/30/15	931	62				881				919		77					
12/31/15	945	62	0.15	ND	850	880				934		74					
Monthly Average	824	56	0.21	ND	794	694	0.13	0.045	110	894	76	75	160	1200	9	0.040	0.022

Notes:  
 Flow reported as gpm is a daily average calculated from the totalizer reading.  
 ND = Not detected above laboratory method detection limit (ClO<sub>2</sub> = 0.5 ug/L; ClO<sub>3</sub> = 10 ug/L; NO<sub>3</sub>-N= 0.055 mg/L, CR(VI) = 0.25 ug/L); NA = Not Available, sample result not reported.  
 1: ETI = Envirogen internal process control data, TA = TestAmerica data.  
 2: Boatman bug population bloom in GW-11 pond. GW-11 bypassed and strainers offline for 5 days until bug population declined enough to resume normal operations on 12/17/2015.

Table 4 - Treatment Plant Operational Metrics

Nevada Environmental Response Trust   Groundwater Extraction and Treatment System   Enhanced Operational Metrics															
Date	1st Stage FBR Influent			2nd Stage FBR Influent			FBR Plant Effluent <sup>1</sup>								
	Flow (gpm)	pH (s.u.)	ORP (mV)	Flow (gpm)	pH (s.u.)	ORP (mV)	Flow (gpm)	TA - ClO <sub>4</sub> (mg/L)	ETI - ClO <sub>4</sub> (mg/L)	TA - ClO <sub>3</sub> (mg/L)	TA-Cr (TR) (mg/L)	TA-Cr (VI) (mg/L)	TA - SO <sub>4</sub> (mg/L)	TA - NO <sub>3</sub> - N (mg/L)	ETI - Turbidity (NTU)
12/01/15	920	7.5	-381	858	7.73	-411	957		ND					20	
12/02/15	912	7.4	-375	857	7.74	-411	968		ND					11	
12/03/15	999	7.4	-296	856	7.76	-410	961		ND					14	
12/04/15	659	7.5	-353	844	7.77	-411	952		ND					8	
12/05/15	939	6.6	-372	686	7.77	-413	922	ND	ND					0	
12/06/15	912	6.6	-383	869	7.77	-414	968		ND					20	
12/07/15	960	6.6	-385	885	7.77	-415	629		ND	ND	0.008	ND	1,400	ND	13
12/08/15	938	6.6	-388	868	7.77	-417	929		ND					11	
12/09/15	949	6.6	-391	886	7.78	-419	937		ND					15	
12/10/15	943	6.7	-379	885	7.74	-418	547		ND					17	
12/11/15	927	6.7	-401	699	7.80	-418	867		ND					16	
12/12/15	944	6.6	-403	847	7.8	-418	939	ND	ND					10	
12/13/15	955	6.6	-404	846	7.8	-418	932		ND					12	
12/14/15	944	6.6	-407	850	7.9	-421	992		ND		0.008	ND		ND	12
12/15/15	931	6.6	-332	838	7.9	-421	973		ND					0	
12/16/15	930	6.6	-339	820	7.9	-423	980		ND					16	
12/17/15	929	6.6	-319	860	7.8	-420	995		ND					21	
12/18/15	889	6.5	-288	871	7.8	-420	988		ND					13	
12/19/15	882	6.6	-311	842	7.8	-419	973	ND	ND					15	
12/20/15	959	6.7	-344	853	7.9	-421	975		ND					12	
12/21/15	945	6.7	-352	835	7.8	-419	956		ND		0.009	ND		ND	17
12/22/15	944	6.7	-351	790	7.9	-417	902		ND					16	
12/23/15	931	6.7	-357	786	7.9	-416	909		ND					13	
12/24/15	930	6.7	-347	790	7.9	-415	891		ND					15	
12/25/15	929	6.7	-364	613	7.9	-418	872		ND					24	
12/26/15	889	6.6	-356	847	7.9	-415	880	ND	ND					28	
12/27/15	866	6.6	-362	836	7.9	-419	867		ND					12	
12/28/15	795	6.6	-366	849	7.8	-418	957		ND					15	
12/29/15	918	6.6	-367	828	7.9	-419	952		ND		0.011	ND		ND	9
12/30/15	902	6.6	-370	827	7.8	-418	947		ND					13	
12/31/15	912	6.5	-363	856	7.8	-420	972		ND					12	
Monthly Average	916	6.7	-362	828	7.8	-417	919	ND	ND	ND	0.009	ND	1400	ND	

Notes:

Flow reported as gpm is a daily average calculated from the totalizer reading.

ND = Not detected above laboratory method detection limit (ClO<sub>2</sub> = 0.5 ug/L; ClO<sub>3</sub> = 10 ug/L; NO<sub>3</sub>-N= 0.055 mg/L, CR(VI) = 0.25 ug/L).

1: ETI = Envirogen internal process control data, TA = TestAmerica data.

GW-11 Level Monitoring		
Date	Field Measurement (ft)	Volume (MG)
12/8/2015	25.0	43.2
12/20/2015	24.8	43.4

GW-11 Leak Detection Monitoring				
Date	Amount Pumped <sup>1</sup> (gallons)			
	NW Corner	NE Corner	SW Corner	SE Corner
12/11/2015	0	0	250	0
12/31/2015	24	0	582	0

GW-11 Composite Sample <sup>2</sup>		
Analytes	Concentration	Units
Perchlorate	77	mg/L
Chlorate	0.0	mg/L
Ammonia as N	0.72	mg/L
Total Phosphorus	0.67	mg/L
Total Dissolved Solids (TDS)	5800	mg/L
Total Suspended Solids (TSS)	300	mg/L
pH	7	s.u.
Calcium	290	mg/L
Iron	1.2	mg/L
Chromium (total)	0.046	mg/L
Chromium VI	ND	mg/L
Chloride	1700	mg/L
Nitrate as N	1.9	mg/L
Sulfate	1600	mg/L

## Notes:

ND = Not detected above laboratory method detection limit (NH<sub>3</sub>-N= 0.1 mg/L; Total P = .025 ug/L; CR(VI) = 0.25 ug/L).

1: Pumping occurs over three consecutive days. The total amount pumped over the three day period is listed with the last day pumping occurred.

2: Corner Composite Sample collected quarterly, most recent sampling results presented. Sampled on: October 1, 2015 by Envirogen.



Nevada Environmental Response Trust   Groundwater Extraction and Treatment System   Enhanced Operational Metrics						
Date	Flow <sup>1</sup> (gpm)	FBR Influent Concentration			Influent Function Load <sup>2</sup> (lbs/day)	6 Month Rolling Average (lbs/day)
		ClO <sub>4</sub> (mg/L)	NO <sub>3</sub> as N (mg/L)	ClO <sub>3</sub> (mg/L)		
Jan 2015	844	84	7	190	541	613
Feb 2015	1021	101	7	210	738	625
Mar 2015	918	95	7	100	445	591
Apr 2015	916	97	7	140	520	570
May 2015	858	105	6	170	549	571
June 2015	824	108	6	170	532	554
July 2015	857	100	5	180	547	555
Aug 2015	891	87	6	160	516	518
Sep 2015	785	103	9	180	540	521
Oct 2015	950	86	6	180	587	542
Nov 2015	927	82	7	140	496	538
Dec 2015	919	76	9	160	537	537

Notes:

Concentrations and flow are presented as monthly average.

1: Flow used in loading calculation is average monthly FBR effluent flow to be consistent with historical loading calculations.

2: FBR loading calculated as  $[0.9 \cdot \text{NO}_3 \text{ as N} + 0.17 \cdot \text{ClO}_3 + 0.18 \cdot \text{ClO}_4 \cdot \text{Flow} \cdot 1440 / 1000000 \cdot 8.34]$ .

Figure 1 - GW-11 Pond Volume and Perchlorate Concentration

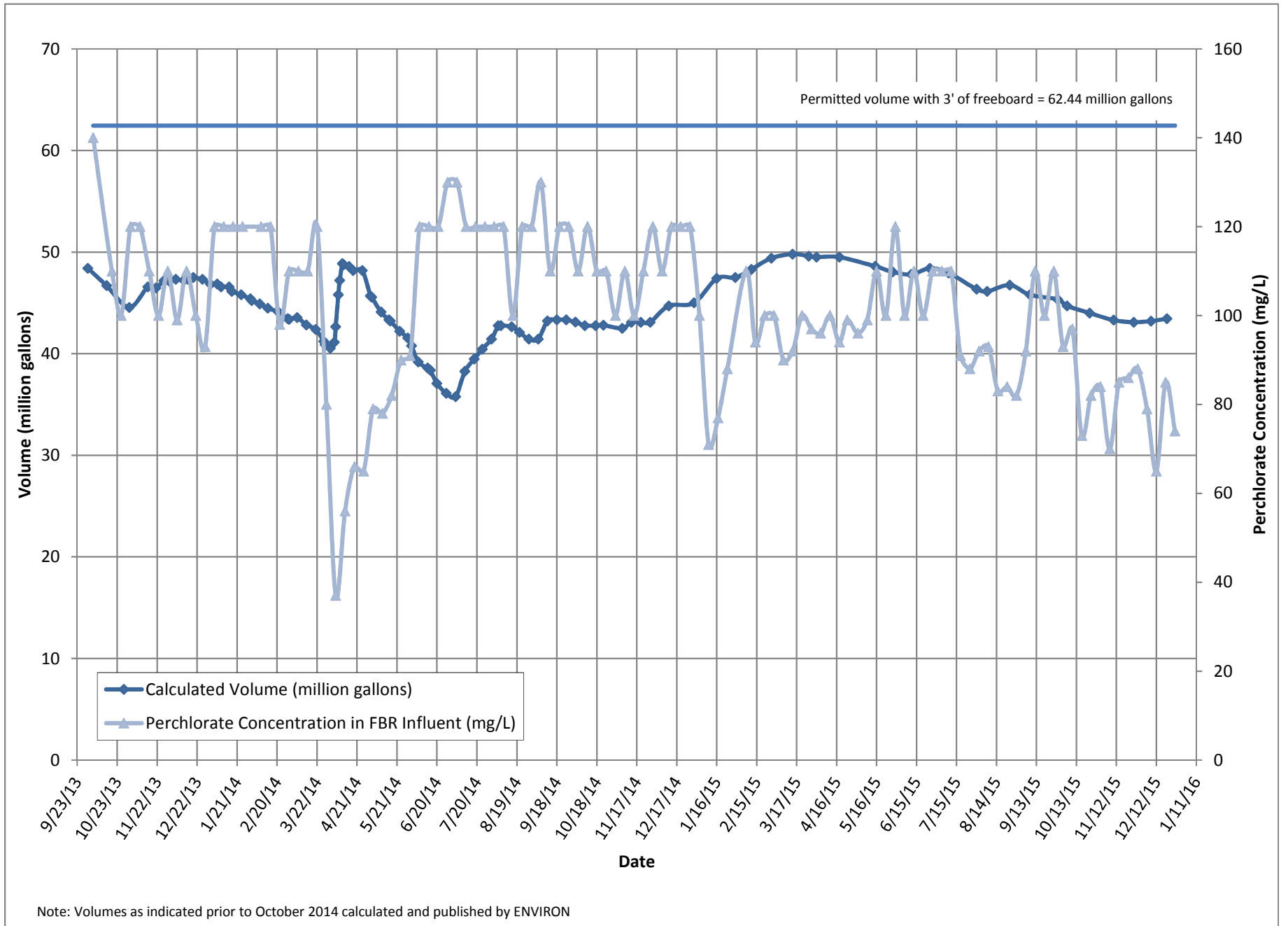


Figure 2 - FBR Equivalent Loading Calculation

