

Table 1 - Seep Well Field (SWF) Operational Metrics

Nevada Environmental Response Trust Groundwater Extraction and Treatment System Enhanced Operational Metrics																		
Date	LS #1 Flow (gpm)	East Well (PC-116R) Flow (gpm) Level (ft)	Center Well (PC99R2/99R3) Flow (gpm) Level (ft)	West Well (PC-115R) Flow (gpm) Level (ft)	PC 117 Flow (gpm) Level (ft)	PC 118 Flow (gpm) Level (ft)	PC 119 Flow (gpm) Level (ft)	PC 120 Flow (gpm) Level (ft)	PC 121 Flow (gpm) Level (ft)	PC 133 Flow (gpm) Level (ft)								
04/01/15	625	156	73	107	125	78	47	0	0	4								
04/02/15	625	156	74	108	125	77	47	0	0	4								
04/03/15	626	156	70	106	125	76	47	0	0	4								
04/04/15	622	156	69	106	124	77	47	0	0	4								
04/05/15	626	157	67	106	125	77	47	0.7 ¹	0	4								
04/06/15	624	156	67	106	124	77	47	0	0	4								
04/07/15	626	157	67	107	125	76	47	0	0	4								
04/08/15	625	156	65	99	125	76	47	0	0	4								
04/09/15	625	157	67	105	125	77	47	0	0	4								
04/10/15	625	156	67	106	125	77	47	0	0	4								
04/11/15	623	156	67	105	124	77	47	0	0	4								
04/12/15	625	156	68	105	125	77	47	0	0	4								
04/13/15	626	156	65	108	125	78	47	0	0	4								
04/14/15	621	156	63	110	124	76	47	0	0	4								
04/15/15	624	156	62	109	125	76	48	0	0	4								
04/16/15	625	156	63	109	125	77	47	0	0	4								
04/17/15	624	156	63	110	125	77	48	0	0	5								
04/18/15	625	156	63	108	124	78	48	0	0	4								
04/19/15	625	156	63	108	125	77	48	0	0	4								
04/20/15	625	156	63	108	125	77	47	0	0	4								
04/21/15	624	142	63	101	108	77	48	0	0	4								
4/22/2015 ²	623	128	63	94	94	78	48	0	0	4								
04/23/15	622	128	63	94	94	77	47	0	0	4								
04/24/15	625	128	63	94	94	77	48	0	0	4								
04/25/15	624	127	63	94	94	77	48	0	0	4								
04/26/15	624	128	63	94	94	77	47	0	0	4								
04/27/15	624	129	63	95	94	77	48	0	0	4								
04/28/15	627	131	63	96	94	78	49	0	0	4								
04/29/15	625	131	63	96	94	78	48	0	0	4								
04/30/15	619	138	63	92	103	49	62	0	0	4								
Monthly Average	624	148	65	103	115	76	48	0.02	0	4								
Analytical ³	Conc (mg/L)	Date	Conc (mg/L)	Date	Conc (mg/L)	Date	Conc (mg/L)	Date	Conc (mg/L)	Date	Conc (mg/L)	Date						
Perchlorate	17	4/6/2015	20	4/6/2015	11	4/6/2015	10	4/6/2015	2.5	4/6/2015	0.29	4/6/2015	0.085	4/6/2015	0.32	4/6/2015	9	4/6/2015
Hexavalent Chromium	Future Metric - Enhanced Operations																	
Total Chromium ⁴	0.0038	2/2/2015	0.0026	2/2/2015	ND	2/2/2015	0.0027	2/2/2015	ND	2/2/2015	ND	2/2/2015	ND	2/2/2015	ND	2/2/2015	0.0031	2/2/2015

Notes:
 Flow reported as gpm is a daily average calculated from the totalizer reading.
 ND = Not detected above laboratory method detection limit (ClO₄ = 0.5 ug/L; ClO₃ = 10 ug/L; NO₃-N = 0.055 mg/L, CR(VI) = 0.25 ug/L).
 1: PC-120 was put on-line to maintain level in LS1 wet well during repairs.
 2: SWF flows returned to normal at the direction of the Trust.
 3: Analytical results are reported from TestAmerica.
 4: Quarterly results, most recent sampling concentrations listed (Samples will be transitioned to monthly reporting in the future).

Table 2 - Athens Road Well Field (AWF) Operational Metrics

Nevada Environmental Response Trust Groundwater Extraction and Treatment System Enhanced Operational Metrics																		
Date	LS #3 Flow (gpm)	ART 1		ART 2		ART 3		ART 4		ART 9 Flow (gpm)	ART 6 Level (ft)	ART 9 Level (ft)	ART 7B		ART 8		PC-150	
		Flow (gpm)	Level (ft)	Flow (gpm)	Level (ft)	Flow (gpm)	Level (ft)	Flow (gpm)	Level (ft)				Flow (gpm)	Level (ft)	Flow (gpm)	Level (ft)	Flow ¹ (gpm)	Level (ft)
04/01/15	250	8		63		45		15		61			31		63		5	
04/02/15	250	8		63		44		15		60			30		63		5	
04/03/15	250	8		63		45		15		61			31		63		5	
04/04/15	249	8		62		44		15		60			30		62		5	
04/05/15	250	8		63		44		15		61			30		63		5	
04/06/15	250	8		63		44		15		60			30		63		5	
04/07/15	250	8		63		44		15		60			29		63		5	
04/08/15	250	8		63		44		15		60			31		63		5	
04/09/15	250	8		63		45		15		60			30		63		5	
04/10/15	250	8		63		45		15		60			30		63		5	
04/11/15	249	8		63		44		15		60			30		62		5	
04/12/15	250	8		63		44		15		60			30		63		5	
04/13/15	244	8		63		45		15		60			30		63		5	
04/14/15	256	8		63		44		16		60			29		63		5	
04/15/15	249	8		63		44		15		60			30		63		5	
04/16/15	250	8		63		44		15		60			30		63		5	
04/17/15	250	8		63		45		16		61			30		63		5	
04/18/15	250	8		63		44		15		60			29		63		5	
04/19/15	250	8		63		44		15		61			30		63		5	
04/20/15	250	8		63		44		15		60			29		63		5	
04/21/15	249	8		63		44		16		60			29		63		5	
04/22/15	251	8		63		44		15		61			29		63		5	
04/23/15	249	8		63		44		15		60			29		63		5	
04/24/15	250	8		63		44		15		60			29		63		5	
04/25/15	250	8		63		44		15		60			29		63		5	
04/26/15	249	8		62		44		15		60			29		63		5	
04/27/15	250	8		63		44		15		60			29		63		5	
04/28/15	251	8		63		44		16		60			30		63		5	
04/29/15	250	8		63		44		15		60			29		63		5	
04/30/15	250	8		63		44		16		60			29		63		5	
Monthly Average	250	8		62		44		15		60			30		62		5	
Analytical ²		Conc (mg/L)	Date	Conc (mg/L)	Date	Conc (mg/L)	Date	Conc (mg/L)	Date	ART-6 (mg/L)	ART-9 (mg/L)	Date	Conc (mg/L)	Date	Conc (mg/L)	Date	Conc (mg/L)	Date
Perchlorate		18	4/6/2015	36	4/6/2015	250	4/6/2015	260	4/6/2015	37	280	4/6/2015	160	4/6/2015	160	4/6/2015	210	4/6/2015
Hexavalent Chromium		Future Metric - Enhanced Operations																
Total Chromium ³		0.0029	2/2/2015	0.017	2/2/2015	0.37	2/2/2015	0.54	2/2/2015	0.15	0.79	2/2/2015	0.87	2/2/2015	0.18	2/2/2015	0.29	2/2/2015

Notes:

- Flow reported as gpm is a daily average calculated from the totalizer reading.
- 1: PC-150 flow was manually entered into ETI field spreadsheet because flow is below the lower detection limit of the flow meter.
- 2: Analytical results are reported from TestAmerica.
- 3: Quarterly results, most recent sampling concentrations listed (Samples will be transitioned to monthly reporting in the future).

Table 3 - Interceptor Well Field (IWF) Operational Metrics

Nevada Environmental Response Trust Groundwater Extraction and Treatment System Enhanced Operational Metrics																				
Date	I-AR		I-AA		I-AB		I-AC		I-AD		I-B		I-C		I-D		I-E		I-F	
	Flow (gpm)	Level (ft)	Flow (gpm)	Level (ft)	Flow (gpm)	Level (ft)	Flow (gpm)	Level (ft)	Flow (gpm)	Level (ft)	Flow (gpm)	Level (ft)	Flow (gpm)	Level (ft)	Flow (gpm)	Level (ft)	Flow (gpm)	Level (ft)	Flow (gpm)	Level (ft)
4/1/2015 ³	0.65		0.74		0.00		0.00		0.00		0.99		3.42		1.48		1.03		3.66	
04/02/15	0.67		0.84		0.00		0.00		0.00		1.17		4.19		1.80		1.22		3.87	
04/03/15	0.68		0.84		0.00		0.00		0.00		1.12		4.18		1.81		1.20		3.78	
04/04/15	0.68		0.96		0.00		0.00		0.00		1.15		4.67		1.81		1.18		3.73	
04/05/15	0.69		0.97		0.00		0.00		0.00		1.11		5.21		1.80		1.18		3.71	
04/06/15	0.69		0.89		0.00		0.00		0.00		1.13		5.17		1.81		1.17		3.76	
04/07/15	0.66		0.87		0.00		0.00		0.00		1.12		5.20		1.81		1.16		3.64	
04/08/15	0.71		0.83		0.00		0.00		0.00		1.16		5.30		1.81		1.16		3.70	
04/09/15	0.72		0.92		0.00		0.00		0.00		1.12		5.30		1.81		1.15		3.64	
04/10/15	0.71		0.98		0.00		0.00		0.00		1.08		4.99		1.82		1.12		3.60	
04/11/15	0.71		1.03		0.00		0.00		0.00		1.14		4.88		1.83		1.15		3.63	
04/12/15	0.71		0.97		0.00		0.00		0.00		1.13		4.83		1.83		1.14		3.54	
04/13/15	0.69		1.08		0.00		0.00		0.00		1.18		4.89		1.81		1.15		3.60	
04/14/15	0.69		0.93		0.00		0.00		0.00		1.12		5.12		1.86		1.17		3.58	
04/15/15	0.72		0.71		0.00		0.00		0.00		1.14		5.02		1.80		1.12		3.62	
04/16/15	0.70		0.83		0.00		0.00		0.00		1.11		4.97		1.81		1.11		3.40	
04/17/15	0.69		0.97		0.00		0.00		0.00		1.09		4.98		1.81		1.12		3.51	
04/18/15	0.71		1.02		0.00		0.00		0.00		1.13		4.92		1.80		1.11		3.53	
04/19/15	0.71		1.09		0.00		0.00		0.00		1.15		4.95		1.80		1.11		3.44	
04/20/15	0.71		1.08		0.00		0.00		0.00		1.19		4.96		1.80		1.13		3.51	
04/21/15	0.69		0.94		0.00		0.00		0.00		1.12		4.87		1.78		1.15		3.50	
4/22/2015 ⁴	0.73		0.71		0.00		0.00		0.00		0.96		3.14		1.35		0.96		3.30	
04/23/15	0.71		0.81		0.00		0.00		0.00		1.11		4.19		1.79		1.16		3.69	
04/24/15	0.71		0.86		0.00		0.00		0.00		1.10		4.20		1.80		1.15		3.49	
4/25/2015 ⁵	0.71		0.40		0.00		0.00		0.00		0.48		1.74		0.75		0.51		1.52	
04/26/15	0.72		0.96		0.00		0.00		0.00		1.25		4.03		1.72		1.16		4.45	
04/27/15	0.73		1.13		0.00		0.00		0.00		1.12		4.27		1.81		1.16		4.16	
04/28/15	0.71		1.21		0.00		0.00		0.00		1.10		4.24		1.79		1.12		3.79	
04/29/15	0.72		1.40		0.00		0.00		0.00		1.07		4.25		1.79		1.11		3.57	
04/30/15	0.71		1.36		0.00		0.00		0.00		1.13		4.69		1.77		1.11		3.53	
Monthly Average	0.70		0.94		0.00		0.00		0.00		1.10		4.56		1.74		1.12		3.58	
Analytical ¹	Conc (mg/L)	Date	Conc (mg/L)	Date	Conc (mg/L)	Date	Conc (mg/L)	Date	Conc (mg/L)	Date	Conc (mg/L)	Date	Conc (mg/L)	Date	Conc (mg/L)	Date	Conc (mg/L)	Date	Conc (mg/L)	Date
Perchlorate ²	2500	2/23/2015	120	2/23/2015	560	2/23/2015	37	2/26/2015	140	2/26/2015	1200	2/23/2015	960	2/23/2015	800	2/23/2015	870	2/23/2015	1200	2/23/2015
Hexavalent Chromium	Future Metric - Enhanced Operations																			
Total Chromium ³	0.56	2/23/2015	0.13	2/23/2015	0.12	2/23/2015	0.61	2/26/2015	1.3	2/26/2015	0.17	2/23/2015	2.9	2/23/2015	5.4	2/23/2015	8	2/23/2015	17	2/23/2015

Notes:
 Flow reported as gpm is a daily average calculated from the totalizer reading.
 1: Analytical results are reported from TestAmerica.
 2: Quarterly results, most recent sampling concentrations listed (Samples will be transitioned to monthly reporting in the future).
 3: IWF was shut down for 5 hours to complete maintenance on the GWTP.
 4: IWF was shut down during the replacement of the effluent flow meter at the GWTP.
 5: The IO card at the GWTP failed causing the PLC to lock up and subsequently shut down the IWF and GWTP.

Nevada Environmental Response Trust Groundwater Extraction and Treatment System Enhanced Operational Metrics																				
Date	I-G		I-H		I-I		I-J		I-K		I-L		I-M		I-N		I-O		I-P	
	Flow (gpm)	Level (ft)	Flow (gpm)	Level (ft)	Flow (gpm)	Level (ft)	Flow (gpm)	Level (ft)	Flow (gpm)	Level (ft)	Flow (gpm)	Level (ft)	Flow (gpm)	Level (ft)	Flow (gpm)	Level (ft)	Flow (gpm)	Level (ft)	Flow (gpm)	Level (ft)
4/1/2015 ³	0.16		0.81		3.94		5.67		3.46		2.98		1.91		2.58		1.41		1.79	
04/02/15	0.18		0.93		4.82		6.64		4.07		3.46		2.33		2.87		1.57		2.07	
04/03/15	0.17		0.92		4.89		6.66		4.08		3.41		2.36		2.80		1.53		2.03	
04/04/15	0.17		0.92		4.81		6.54		4.02		3.39		2.34		2.77		1.53		2.02	
04/05/15	0.17		0.91		4.86		6.56		4.04		3.39		2.35		2.75		1.52		2.00	
04/06/15	0.17		0.90		4.85		6.54		4.04		3.38		2.35		2.73		1.50		1.99	
04/07/15	0.17		0.90		4.90		6.60		4.05		3.40		2.36		2.72		1.49		1.97	
04/08/15	0.17		0.89		4.85		6.51		4.00		3.35		2.35		2.68		1.46		1.94	
04/09/15	0.16		0.90		4.89		6.56		4.05		3.34		2.35		2.69		1.46		1.94	
04/10/15	0.17		0.89		4.90		6.57		4.06		3.34		2.36		2.67		1.45		1.93	
04/11/15	0.17		0.89		4.93		6.61		4.07		3.32		2.36		2.65		1.47		1.93	
04/12/15	0.16		0.88		4.79		6.43		3.95		3.33		2.38		2.64		1.44		1.89	
04/13/15	0.17		0.88		4.94		6.60		4.07		3.31		2.40		2.63		1.42		1.90	
04/14/15	0.17		0.88		4.43		6.36		3.90		3.34		2.42		2.65		1.43		1.92	
04/15/15	0.16		0.87		5.01		6.72		4.13		3.30		2.37		2.60		1.40		1.87	
04/16/15	0.17		0.88		4.86		6.50		4.00		3.32		2.34		2.60		1.43		1.88	
04/17/15	0.17		0.87		4.90		6.56		4.01		3.30		2.34		2.59		1.43		1.87	
04/18/15	0.18		0.87		4.89		6.55		4.00		3.29		2.34		2.59		1.43		1.89	
04/19/15	0.17		0.87		4.84		6.48		3.96		3.31		2.32		2.57		1.41		1.87	
04/20/15	0.18		0.87		4.81		6.51		3.98		3.27		2.32		2.58		1.42		1.87	
04/21/15	0.17		0.87		4.80		6.42		3.94		3.25		2.32		2.57		1.41		1.87	
4/22/2015 ⁴	0.15		0.78		3.70		5.40		3.25		2.74		1.75		2.27		1.33		1.67	
04/23/15	0.17		0.94		4.23		6.72		4.07		3.41		2.28		2.74		1.60		2.05	
04/24/15	0.17		0.91		4.90		6.67		4.04		3.30		2.30		2.62		1.53		1.99	
4/25/2015 ⁵	0.08		0.43		1.99		2.85		1.75		1.43		0.96		1.18		0.73		0.92	
04/26/15	0.18		1.09		4.66		7.09		4.25		3.76		2.19		3.29		2.05		2.42	
04/27/15	0.18		1.01		4.75		7.02		4.22		3.57		2.31		3.00		1.77		2.21	
04/28/15	0.18		0.97		4.34		6.81		4.15		3.41		2.32		2.76		1.63		2.10	
04/29/15	0.17		0.95		4.84		6.67		4.07		3.40		2.30		2.68		1.58		2.06	
04/30/15	0.17		0.93		4.83		6.72		4.10		3.37		2.32		2.61		1.52		2.01	
Monthly Average	0.17		0.89		4.64		6.42		3.93		3.27		2.26		2.64		1.48		1.93	
Analytical ¹	Conc (mg/L)	Date	Conc (mg/L)	Date	Conc (mg/L)	Date	Conc (mg/L)	Date	Conc (mg/L)	Date	Conc (mg/L)	Date	Conc (mg/L)	Date	Conc (mg/L)	Date	Conc (mg/L)	Date	Conc (mg/L)	Date
Perchlorate ²	1500	2/23/2015	2300	2/23/2015	990	2/26/2015	330	2/27/2015	280	2/26/2015	940	2/23/2015	1200	2/23/2015	970	2/23/2015	1300	2/23/2015	1500	2/23/2015
Hexavalent Chromium	Future Metric - Enhanced Operations																			
Total Chromium ³	22	2/23/2015	21	2/23/2015	11	2/26/2015	3.4	2/27/2015	1.5	2/26/2015	0.95	2/23/2015	8	2/23/2015	9.3	2/23/2015	16	2/23/2015	18	2/23/2015

Notes:

Flow reported as gpm is a daily average calculated from the totalizer reading.

1: Analytical results are reported from TestAmerica.

2: Quarterly results, most recent sampling concentrations listed (Samples will be transitioned to monthly reporting in the future).

3: IWF was shut down for 5 hours to complete maintenance on the GWTP.

4: IWF was shut down during the replacement of the effluent flow meter at the GWTP.

5: The IO card at the GWTP failed causing the PLC to lock up and subsequently shut down the IWF and GWTP.

Table 3 - Interceptor Well Field (IWF) Operational Metrics

Nevada Environmental Response Trust Groundwater Extraction and Treatment System Enhanced Operational Metrics																				
Date	I-Q		I-R		I-S		I-T		I-U		I-V		I-W		I-X		I-Y		I-Z	
	Flow (gpm)	Level (ft)	Flow (gpm)	Level (ft)	Flow (gpm)	Level (ft)	Flow (gpm)	Level (ft)	Flow (gpm)	Level (ft)	Flow (gpm)	Level (ft)	Flow (gpm)	Level (ft)	Flow (gpm)	Level (ft)	Flow (gpm)	Level (ft)	Flow (gpm)	Level (ft)
4/1/2015 ³	0.38		2.10		3.72		0.07 ⁶		0.82		3.84		0.11		2.68		1.34		6.06	
04/02/15	0.43	Future Metric - Enhanced Operations	2.53	Future Metric - Enhanced Operations	4.73	Future Metric - Enhanced Operations	0.07	Future Metric - Enhanced Operations	0.97	Future Metric - Enhanced Operations	4.67	Future Metric - Enhanced Operations	0.30	Future Metric - Enhanced Operations	3.06	Future Metric - Enhanced Operations	1.62	Future Metric - Enhanced Operations	7.22	Future Metric - Enhanced Operations
04/03/15	0.43		2.51		4.71		0.50		0.96		4.71		0.41		3.05		1.61		7.20	
04/04/15	0.43		2.47		4.65		0.43		0.95		4.62		0.37		3.03		1.61		7.05	
04/05/15	0.42		2.49		4.70		0.45		0.96		4.65		0.36		3.03		1.60		7.06	
04/06/15	0.42		2.48		4.65		0.43		0.96		4.65		0.40		3.00		1.60		7.01	
04/07/15	0.43		2.48		4.60		0.49		0.96		4.69		0.51		3.01		1.60		7.07	
04/08/15	0.42		2.44		4.56		0.41		0.95		4.63		0.50		2.99		1.58		6.97	
04/09/15	0.42		2.45		4.58		0.42		0.96		4.65		0.50		2.99		1.59		7.02	
04/10/15	0.41		2.33		4.61		0.48		0.96		4.67		0.58		2.98		1.60		7.04	
04/11/15	0.42		2.36		4.63		0.43		0.96		4.69		0.58		2.98		1.58		7.07	
04/12/15	0.41		2.41		4.61		0.48		0.95		4.56		0.56		2.98		1.61		6.86	
04/13/15	0.42		2.40		4.54		0.41		0.96		4.68		0.55		2.94		1.59		7.06	
04/14/15	0.42		2.44		4.63		0.49		0.98		4.51		0.55		3.01		1.62		6.78	
04/15/15	0.40		2.40		4.55		0.43		0.95		4.74		0.62		2.92		1.57		7.17	
04/16/15	0.42		2.42		4.64		0.49		0.97		4.60		0.63		2.95		1.60		6.94	
04/17/15	0.41		2.41		4.63		0.46		0.96		4.64		0.60		2.93		1.59		6.99	
04/18/15	0.41		2.35		4.63		0.45		0.95		4.62		0.56		2.95		1.57		6.97	
04/19/15	0.41		2.38		4.66		0.46		0.96		4.57		0.54		2.92		1.61		6.89	
04/20/15	0.42		2.34		4.62		0.42		0.96		4.58		0.54		2.93		1.59		6.92	
04/21/15	0.41		2.36		4.61		0.49		0.97		4.50		0.44		2.92		1.57		6.83	
4/22/2015 ⁴	0.36	1.94	3.55	0.27	0.79	3.51	2/26/2015	0.21	2.47	1.33	5.70									
04/23/15	0.42	2.38	4.75	0.42	0.95	4.57	0.26	3.00	1.64	7.25										
04/24/15	0.42	2.36	4.74	0.43	0.96	4.61	0.26	2.96	1.64	7.14										
4/25/2015 ⁴	0.20	1.04	1.94	0.21	0.44	1.89	0.15	1.34	0.73	2.96										
04/26/15	0.47	2.46	4.40	0.23	1.01	4.40	0.45	3.35	1.75	7.21										
04/27/15	0.45	2.42	4.52	0.06	1.02	4.65	0.55	3.12	1.70	7.52										
04/28/15	0.43	2.35	4.39	0.00	1.03	4.63	0.23	2.99	1.67	7.35										
04/29/15	0.44	2.36	4.46	0.07	1.03	4.57	0.12	2.99	1.65	7.18										
04/30/15	0.42	2.37	4.47	0.49	1.01	4.64	0.03	2.94	1.65	7.21										
Monthly Average	0.41		2.34		4.45		0.36		0.94		4.46		0.42		2.91		1.57		6.86	
Analytical ¹	Conc (mg/L)	Date	Conc (mg/L)	Date	Conc (mg/L)	Date	Conc (mg/L)	Date	Conc (mg/L)	Date	Conc (mg/L)	Date	Conc (mg/L)	Date	Conc (mg/L)	Date	Conc (mg/L)	Date	Conc (mg/L)	Date
Perchlorate ²	1800	2/23/2015	1600	2/23/2015	650	2/23/2015	2000	2/23/2015	2000	2/23/2015	1200	2/26/2015	1300	2/23/2015	1500	2/23/2015	1600	2/23/2015	440	2/26/2015
Hexavalent Chromium	Future Metric - Enhanced Operations																			
Total Chromium ²	22	2/23/2015	0.5	2/23/2015	1.7	2/23/2015	23	2/23/2015	23	2/23/2015	11	2/26/2015	15	2/23/2015	12	2/23/2015	0.94	2/23/2015	7.4	2/26/2015

Notes:
 Flow reported as gpm is a daily average calculated from the totalizer reading.
 1: Analytical results are reported from TestAmerica.
 2: Quarterly results, most recent sampling concentrations listed (Samples will be transitioned to monthly reporting in the future).
 3: IWF was shut down for 5 hours to complete maintenance on the GWTP.
 4: IWF was shut down during the replacement of the effluent flow meter at the GWTP.
 5: The IO card at the GWTP failed causing the PLC to lock up and subsequently shut down the IWF and GWTP.

Table 4 - Treatment Plant Operational Metrics

Nevada Environmental Response Trust Groundwater Extraction and Treatment System Enhanced Operational Metrics																	
Date	LS #2	GWTP Effluent ¹				GW-11 Influent				FBR Plant Influent ¹							
	Flow (gpm)	Flow (gpm)	TA - Cr (TR) (mg/L)	TA - Cr (VI) (mg/L)	TA - ClO ₄ (mg/L)	Flow ² (gpm)	Cr (TR) (mg/L)	Cr (VI) (mg/L)	ClO ₄ (mg/L)	Flow (gpm)	TA - ClO ₄ (mg/L)	ETI - ClO ₄ (mg/L)	TA - ClO ₃ (mg/L)	TA - SO ₄ (mg/L)	TA - NO ₃ - N (mg/L)	TA-Cr (TR) (mg/L)	TA-Cr (VI) (mg/L)
04/01/15	999	53				1051						75					
04/02/15	997	62	1.60	ND	880	1059						76					
04/03/15	1001	61				1062						75					
04/04/15	994	62				1055					96	75					
04/05/15	999	61				1060						75					
04/06/15	998	60				1058						75	140	1,400	6	0.034	0.015
04/07/15	832	61				893						75					
04/08/15	930	61				990						74					
04/09/15	999	61	0.26	ND	950	1060						91					
04/10/15	998	61				1059	0.12	0.04	130			113					
04/11/15	994	62				1055					100	75					
04/12/15	994	59				1054						76					
04/13/15	912	60				971						79			8	0.032	0.028
04/14/15	749	61				809						80					
04/15/15	749	60				808						77					
04/16/15	750	60	0.20	ND	850	810						73					
04/17/15	749	60				809						77					
04/18/15	750	60				810					94	86					
04/19/15	750	60				810						91					
04/20/15	750	59				809						93			7	0.034	0.030
04/21/15	749	60				809						93					
04/22/15	751	NA ³				NA ³						83					
04/23/15	749	62	0.19	ND	940	811						86					
04/24/15	750	59				809					99	94					
4/25/2015 ⁴	749	25				775						94					
04/26/15	749	62				811						92					
04/27/15	749	62				865						84			6	0.037	0.028
04/28/15	753	60				866						94					
04/29/15	750	60				860						92					
04/30/15	749	NA ⁵	0.18	ND	920	861						100					
Monthly Average	846	59	0.49	ND	908	916	0.12	0.04	130		97	84	140	1,400	7	0.03	0.03

Notes:

Flow reported as gpm is a daily average calculated from the totalizer reading.

ND = Not detected above laboratory method detection limit (ClO₄ = 0.5 ug/L; ClO₃ = 10 ug/L; NO₃-N= 0.055 mg/L, CR(VI) = 0.25 ug/L).

1: ETI = Envirogen internal process control data, TA = TestAmerica data.

2: GW-11 influent flow was calculated until April 27th. Readings from the new influent flow meter are provided for the remainder of the month and will be the source for future GW-11 influent flow numbers .

3: NA = Not available. A new effluent flow meter was installed at the GWTP.

4: The IO card at the GWTP failed causing the PLC to lock up and subsequently shut down the IWF and GWTP.

5: NA = Not Available. ETI calibrated and reset the GWTP effluent flow meter.

Table 4 - Treatment Plant Operational Metrics

Nevada Environmental Response Trust Groundwater Extraction and Treatment System Enhanced Operational Metrics																
Date	1st Stage FBR Influent			2nd Stage FBR Influent			FBR Plant Effluent ¹									
	Flow (gpm)	pH (s.u.)	ORP (mV)	Flow (gpm)	pH (s.u.)	ORP (mV)	Flow (gpm)	TA - ClO ₄ (mg/L)	ETI - ClO ₄ (mg/L)	TA - ClO ₃ (mg/L)	TA-Cr (TR) (mg/L)	TA-Cr (VI) (mg/L)	TA - SO ₄ (mg/L)	TA - NO ₃ - N (mg/L)	ETI - Turbidity (NTU)	
04/01/15	Future Metric - Enhanced Operations	7.1	-395	Future Metric - Enhanced Operations	7.3	-371	918		ND						8	
04/02/15		7.1	-393		7.3	-366	915		ND							9
04/03/15		7.1	-391		7.3	-365	914		ND							11
04/04/15		7.1	-390		7.2	-363	895	ND	ND							8
04/05/15		7.1	-391		7.3	-364	843		ND							14
04/06/15		7.1	-151		7.4	-361	875		ND	ND	0.006	ND		1,300	0.95	7
04/07/15		7.1	-137		7.4	-359	895		ND	ND						14
04/08/15		7.1	-354		7.5	-384	904		ND	ND						20
04/09/15		7.1	-371		7.2	-359	901		ND	ND						13
04/10/15		7.1	-320		7.2	-349	910		ND	ND						7
04/11/15		7.1	-362		7.1	-352	923	ND	ND	ND						8
04/12/15		7.1	-302		7.0	-355	923		ND	ND						9
04/13/15		7.1	-350		7.1	-363	903		ND	ND	0.008	ND			0.71	19
04/14/15		7.1	-382		7.3	-355	882		ND	ND						8
04/15/15		7.2	-387		7.3	-359	895		ND	ND						4
04/16/15		7.2	-389		7.1	-358	922		ND	ND						5
04/17/15		7.1	-390		7.1	-360	933		ND	ND						5
04/18/15		7.1	-391		7.0	-359	933	ND	ND	ND						4
04/19/15		7.1	-389		7.0	-356	930		ND	ND						6
04/20/15		7.0	-391		7.0	-354	893		ND	ND	0.005	ND			0.64	6
04/21/15		7.1	-393		7.0	-352	905		ND	ND						5
04/22/15		7.1	-397		7.0	-356	897		ND	ND						5
04/23/15		7.1	-398		7.1	-355	890		ND	ND						5
04/24/15		7.1	-407		7.1	-358	856	ND	ND	ND						11
04/25/15		7.1	-418		7.2	-359	895		ND	ND						5
04/26/15		7.1	-423		7.2	-352	900		ND	ND						5
04/27/15		7.1	-429		7.1	-356	898		ND	ND	0.004	ND			0.94	6
04/28/15		7.1	-435		7.0	-358	890		ND	ND						5
04/29/15		7.1	-438		7.0	-356	878		ND	ND						5
04/30/15		7.0	-437		7.0	-356	893		ND	ND						5
Monthly Average		7.1	-373		7.2	-359	900	ND	ND	ND	0.01	ND	1,300	ND	8	

Notes:

Flow reported as gpm is a daily average calculated from the totalizer reading.

ND = Not detected above laboratory method detection limit (ClO₄ = 0.5 ug/L; ClO₃ = 10 ug/L; NO₃-N = 0.055 mg/L, CR(VI) = 0.25 ug/L).

1: ETI = Envirogen internal process control data, TA = TestAmerica data.

GW-11 Level Monitoring		
Date	Field Measurement (ft)	Volume (MG)
4/1/2015	20.4	49.5
4/18/2015	20.3	49.5

GW-11 Leak Detection Monitoring ¹				
Date	Amount Pumped (gallons)			
	NW Corner	NE Corner	SW Corner	SE Corner
4/10/2015	850	3100	1200	1500
4/18/2015	1080	3750	75	100

GW-11 Composite Sample ²		
Analytes	Concentration	Units
Perchlorate	93	mg/L
Chlorate	180	mg/L
Ammonia as N	ND	mg/L
Total Phosphorus	ND	mg/L
Total Dissolved Solids (TDS)	5300	mg/L
Total Suspended Solids (TSS)	3	mg/L
pH	8.36	s.u.
Calcium	320	mg/L
Iron	0.56	mg/L
Chromium (total)	0.046	mg/L
Chromium VI	0.027	mg/L
Chloride	1400	mg/L
Nitrate as N	6.4	mg/L
Sulfate	1200	mg/L

Notes:

- ETI did not pump during the final week in April to avoid impacting a dye tracer study occurring on-site. Tetra Tech continues to evaluate the volumes as reported by ETI, the GW-11 Pond liner system, and potential corrective actions to overcome the obstruction and lower the pump to the bottom of the NE leak detection point.
- Corner Composite Sample collected on: April 30, 2015 by Envirogen. ND = Not detected above laboratory method detection limit (NH₃-N= 0.1 mg/L; Total P = .025 ug/L).

Nevada Environmental Response Trust Groundwater Extraction and Treatment System Enhanced Operational Metrics						
Date	Flow ¹ (gpm)	FBR Influent Concentration			Influent Function Load ² (lbs/day)	6 Month Rolling Average (lbs/day)
		ClO ₄ (mg/L)	NO ₃ as N (mg/L)	ClO ₃ (mg/L)		
May 2014	951	84	8.9	170	594	594
June 2014	906	123	9.0	220	735	665
July 2014	786	123	8.8	220	636	655
Aug 2014	880	116	11	190	663	657
Sept 2014	828	120	11	200	649	656
Oct 2014	825	113	12	200	645	654
Nov 2014	828	108	9.4	160	548	646
Dec 2014	785	118	11	210	628	628
Jan 2015	844	84	6.6	190	628	627
Feb 2015	1021	101	7.0	210	542	613
Mar 2015	918	95	7.0	100	445	594
Apr 2015	916	97	7.0	140	523	576

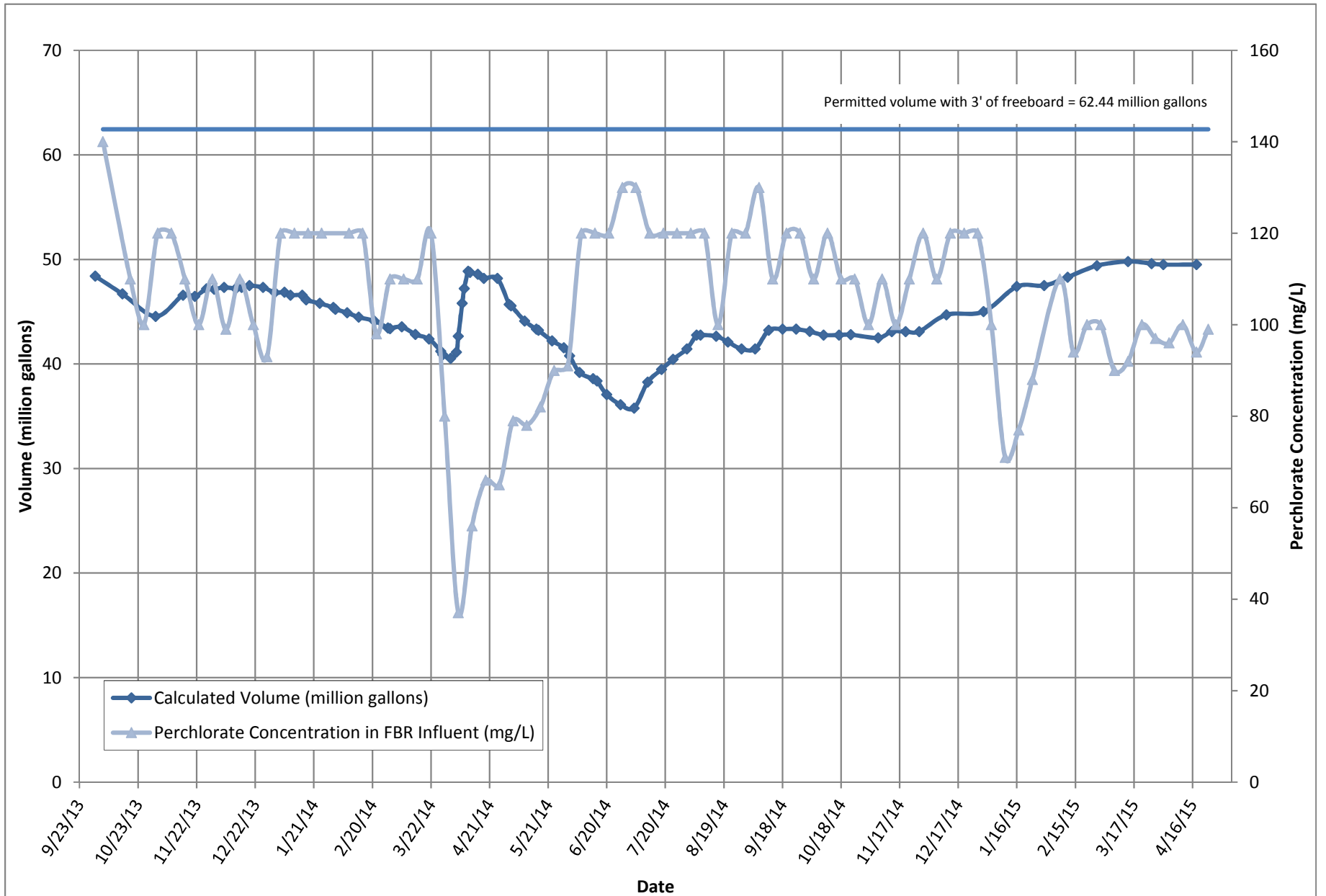
Notes:

Concentrations and flow are presented as monthly average.

1: Flow used in loading calculation is average monthly FBR effluent flow to be consistent with historical loading calculations.

2: FBR loading calculated as $[0.9 \cdot \text{NO}_3 \text{ as N} + 0.17 \cdot \text{ClO}_3 + 0.18 \cdot \text{ClO}_4 \cdot \text{Flow} \cdot 1440 / 1000000 \cdot 8.34]$.

Figure 1 - GW-11 Pond Volume and Perchlorate Concentration



Note: Volumes as indicated prior to October 2014 calculated and published by ENVIRON

Figure 2 - FBR Equivalent Loading Calculation

