

Table 1 - Seep Well Field (SWF) Operational Metrics

Nevada Environmental Response Trust Groundwater Extraction and Treatment System Enhanced Operational Metrics																	
Date	LS #1 Flow (gpm)	East Well (PC-116R) Flow (gpm) Level (ft)	Center Well (PC99R2/99R3) Flow (gpm) Level (ft)	West Well (PC-115R) Flow (gpm) Level (ft)	PC 117 Flow (gpm) Level (ft)	PC 118 Flow (gpm) Level (ft)	PC 119 Flow (gpm) Level (ft)	PC 120 Flow (gpm) Level (ft)	PC 121 Flow (gpm) Level (ft)	PC 133 Flow (gpm) Level (ft)							
03/01/15	663	156	93	106	124	78	47	0	0	4							
03/02/15	666	156	94	106	125	78	47	0	0	4							
03/03/15	665	156	94	106	125	78	47	0	0	4							
03/04/15	665	156	93	106	125	78	47	0	0	4							
03/05/15	664	156	94	106	125	78	47	0	0	4							
03/06/15	663	156	94	105	124	78	47	0	0	4							
03/07/15	633	149	90	101	120	75	45	0	0	4							
03/08/15	663	156	94	106	125	78	47	0	0	4							
03/09/15	640	140	92	85	117	78	47	0	0	4							
03/10/15	625	126'	91	81	110	78	47	0	0	4							
03/11/15	609	122	81	81	109	81	54	6.25'	0	4							
03/12/15	625	156	90	87	110	78	47	0	0	4							
03/13/15	626	156	90	85	109	78	47	0	0	4							
03/14/15	624	156	90	85	110	77	47	0	0	4							
03/15/15	625	156	90	86	109	78	47	0	0	4							
03/16/15	625	156	89	96	117	78	47	0	0	4							
03/17/15	623	156	88	104	124	77	47	0	0	4							
03/18/15	624	156	88	106	124	77	47	0	0	4							
03/19/15	625	156	87	105	125	77	47	0	0	4							
03/20/15	625	156	87	106	125	77	47	0	0	4							
03/21/15	625	156	87	105	125	78	47	0	0	4							
03/22/15	624	156	84	106	125	77	47	0	0	4							
03/23/15	625	156	81	105	125	77	47	0	0	4							
03/24/15	625	156	78	108	125	78	47	0	0	4							
03/25/15	625	156	76	106	124	77	47	0	0	5							
03/26/15	626	156	76	108	125	77	47	0	0	4							
03/27/15	625	156	76	108	125	77	47	0	0	4							
03/28/15	623	156	75	106	124	77	47	0	0	4							
03/29/15	625	156	76	108	125	77	47	0	0	4							
03/30/15	625	156	75	106	125	77	47	0	0	4							
03/31/15	624	156	74	108	125	77	47	0	0	4							
Monthly Average	633	154	86	101	121	78	47	0.20	0.00	4							
Analytical ¹	Conc (mg/L)	Date	Conc (mg/L)	Date	Conc (mg/L)	Date	Conc (mg/L)	Date	Conc (mg/L)	Date	Conc (mg/L)	Date	Conc (mg/L)	Date	Conc (mg/L)	Date	
Perchlorate	17	3/3/2015	19	3/3/2015	11	3/3/2015	10	3/3/2015	3.1	3/3/2015	0.39	3/3/2015	0.13	3/3/2015	0.34	3/3/2015	
Hexavalent Chromium	Future Metric - Enhanced Operations																
Total Chromium ³	0.0038	2/2/2015	0.0026	2/2/2015	ND	2/2/2015	0.0027	2/2/2015	ND	2/2/2015	ND	2/2/2015	ND	2/2/2015	ND	2/2/2015	

Notes:
 Flow reported as gpm is a daily average calculated from the totalizer reading.
 ND = Not detected above laboratory method detection limit (ClO₄ = 0.5 ug/L; ClO₃ = 10 ug/L; NO₃-N = 0.055 mg/L, CR(VI) = 0.25 ug/L).
 1: PC-120 was put on-line to maintain level in LS1 wet well while PC-99R2/R3 was being repaired.
 2: Analytical results are reported from TestAmerica.
 3: Quarterly results, most recent sampling concentrations listed (Samples will be transitioned to monthly reporting in the future).

Table 2 - Athens Road Well Field (AWF) Operational Metrics

Nevada Environmental Response Trust Groundwater Extraction and Treatment System Enhanced Operational Metrics																		
Date	LS #3 Flow (gpm)	ART 1		ART 2		ART 3		ART 4		ART 9 Flow (gpm)	ART 6 Level (ft)	ART 9 Level (ft)	ART 7B		ART 8		PC-150	
		Flow (gpm)	Level (ft)	Flow (gpm)	Level (ft)	Flow (gpm)	Level (ft)	Flow (gpm)	Level (ft)				Flow (gpm)	Level (ft)	Flow (gpm)	Level (ft)	Flow ³ (gpm)	Level (ft)
03/01/15	249	8		62		45		15		62			31		62		5	
03/02/15	249	8		61		44		13		64			31		61		5	
03/03/15	250	8		61		44		15		64			30		61		5	
03/04/15	250	8		63		45		15		60			30		63		5	
03/05/15	250	8		63		46		15		60			29		63		5	
03/06/15	250	8		63		45		15		60			29		63		5	
03/07/15	228	7		54		40		13		53			26		54		5	
03/08/15	250	8		60		44		15		61			30		61		5	
03/09/15	251	10		63		45		15		63			28		62		5	
03/10/15	250	8		63		45		15		61			31		63		5	
03/11/15	249	8		62		45		15		60			31		63		5	
03/12/15	250	8		63		45		15		61			31		63		5	
03/13/15	251	8		63		45		15		61			31		63		5	
03/14/15	249	8		62		45		15		62			31		63		5	
03/15/15	250	8		63		45		15		61			31		63		5	
03/16/15	250	8		63		44		15		61			31		63		5	
03/17/15	249	8		63		45		15		61			31		62		5	
03/18/15	250	8		63		44		15		61			31		63		5	
03/19/15	250	8		63		44		15		61			31		63		5	
03/20/15	250	8		63		45		15		61			31		63		5	
03/21/15	250	8		63		44		16		61			31		63		5	
03/22/15	249	8		63		45		15		61			31		63		5	
03/23/15	250	8		63		44		15		61			31		63		5	
03/24/15	250	8		63		45		15		61			31		63		5	
03/25/15	250	8		63		44		15		61			31		63		5	
03/26/15	251	8		63		44		16		61			31		63		5	
03/27/15	250	8		63		45		15		61			31		63		5	
03/28/15	249	8		63		44		15		60			31		63		5	
03/29/15	250	8		63		44		15		61			31		63		5	
03/30/15	250	8		63		44		15		61			31		63		5	
03/31/15	249	8		63		44		16		60			30		63		5	
Monthly Average	296	8		62		45		14		61			30		62		5	
Analytical ¹		Conc (mg/L)	Date	Conc (mg/L)	Date	Conc (mg/L)	Date	Conc (mg/L)	Date	ART-6 (mg/L)	ART-9 (mg/L)	Date	Conc (mg/L)	Date	Conc (mg/L)	Date	Conc (mg/L)	Date
Perchlorate		18	3/3/2015	36	3/3/2015	230	3/3/2015	260	3/3/2015	36	240	3/3/2015	160	3/3/2015	170	3/3/2015	230	3/3/2015
Hexavalent Chromium		Future Metric - Enhanced Operations																
Total Chromium ²		0.0029	2/2/2015	0.017	2/2/2015	0.37	2/2/2015	0.54	2/2/2015	0.15	0.79	2/2/2015	0.87	2/2/2015	0.18	2/2/2015	0.29	2/2/2015

Notes:

Flow reported as gpm is a daily average calculated from the totalizer reading.

1: Analytical results are reported from TestAmerica.

2: Quarterly results, most recent sampling concentrations listed (Samples will be transitioned to monthly reporting in the future).

3: PC-150 flow was manually entered into ETI field spreadsheet due to flow meter problems.

Table 3 - Interceptor Well Field (IWF) Operational Metrics

Nevada Environmental Response Trust Groundwater Extraction and Treatment System Enhanced Operational Metrics																				
Date	I-AR		I-AA		I-AB		I-AC		I-AD		I-B		I-C		I-D		I-E		I-F	
	Flow (gpm)	Level (ft)	Flow (gpm)	Level (ft)	Flow (gpm)	Level (ft)	Flow (gpm)	Level (ft)	Flow (gpm)	Level (ft)	Flow (gpm)	Level (ft)	Flow (gpm)	Level (ft)	Flow (gpm)	Level (ft)	Flow (gpm)	Level (ft)	Flow (gpm)	Level (ft)
03/01/15	0.65		0.43		0.00		0.00		0.00		1.19		4.27		1.74		1.20		4.58	
03/02/15	0.67		0.49		0.00		0.00		0.00		1.14		4.36		1.79		1.25		4.64	
03/03/15	0.68		0.60		0.00		0.00		0.00		1.20		4.36		1.76		1.22		4.64	
03/04/15	0.68		0.53		0.00		0.00		0.00		1.18		4.35		1.78		1.22		4.61	
03/05/15	0.69		0.76		0.00		0.00		0.00		1.18		5.08		1.76		1.23		4.58	
03/06/15	0.69		0.80		0.00		0.00		0.00		1.20		4.98		1.76		1.24		4.63	
03/07/15	0.66		0.74		0.00		0.00		0.00		1.11		4.49		1.69		1.23		4.53	
03/08/15	0.71		0.84		0.00		0.00		0.00		1.22		4.67		1.77		1.28		4.65	
03/09/15	0.72		0.83		0.00		0.00		0.00		1.21		4.72		1.81		1.29		4.84	
03/10/15	0.71		0.81		0.00		0.00		0.00		1.20		4.55		1.75		1.22		4.46	
03/11/15	0.71		0.69		0.00		0.00		0.00		1.18		4.57		1.78		1.22		4.24	
03/12/15	0.71		0.83		0.00		0.00		0.00		1.46		4.56		1.78		1.22		4.02	
03/13/15	0.69		0.80		0.00		0.00		0.00		0.99		4.50		1.77		1.21		3.95	
03/14/15	0.69		0.82		0.00		0.00		0.00		1.22		4.87		1.78		1.22		3.95	
03/15/15	0.72		0.95		0.00		0.00		0.00		1.26		4.97		1.79		1.22		3.86	
03/16/15	0.70		0.91		0.00		0.00		0.00		1.18		4.85		1.78		1.23		3.90	
03/17/15	0.69		0.89		0.00		0.00		0.00		1.25		4.77		1.78		1.22		3.89	
03/18/15	0.71		0.82		0.00		0.00		0.00		1.25		4.68		1.78		1.24		3.82	
03/19/15	0.71		0.83		0.00		0.00		0.00		1.18		4.65		1.79		1.24		3.82	
03/20/15	0.71		0.80		0.00		0.00		0.00		1.24		4.59		1.78		1.23		3.84	
03/21/15	0.69		0.88		0.00		0.00		0.00		1.23		4.52		1.76		1.23		3.77	
03/22/15	0.73		0.93		0.00		0.00		0.00		1.28		4.70		1.82		1.25		3.90	
03/23/15	0.71		0.85		0.00		0.00		0.00		1.22		4.66		1.79		1.22		3.87	
03/24/15	0.71		0.84		0.00		0.00		0.00		1.19		4.65		1.80		1.22		3.84	
03/25/15	0.71		0.80		0.00		0.00		0.00		1.24		4.69		1.81		1.22		3.85	
03/26/15	0.72		0.84		0.00		0.00		0.00		1.25		4.67		1.81		1.22		3.82	
03/27/15	0.73		0.91		0.00		0.00		0.00		1.22		4.73		1.81		1.24		3.86	
03/28/15	0.71		0.90		0.00		0.00		0.00		1.13		4.52		1.71		1.22		3.75	
03/29/15	0.72		1.01		0.00		0.00		0.00		1.22		4.79		1.80		1.23		3.80	
03/30/15	0.71		1.03		0.00		0.00		0.00		1.21		4.75		1.81		1.20		3.78	
03/31/15	0.72		1.00		0.00		0.00		0.00		1.17		4.72		1.80		1.20		3.78	
Monthly Average	0.70		0.81		0.00		0.00		0.00		1.21		4.65		1.78		1.23		4.11	
Analytical ¹	Conc (mg/L)	Date	Conc (mg/L)	Date	Conc (mg/L)	Date	Conc (mg/L)	Date	Conc (mg/L)	Date	Conc (mg/L)	Date	Conc (mg/L)	Date	Conc (mg/L)	Date	Conc (mg/L)	Date	Conc (mg/L)	Date
Perchlorate ²	2500	2/23/2015	120	2/23/2015	560	2/23/2015	37	2/26/2015	140	2/26/2015	1200	2/23/2015	960	2/23/2015	800	2/23/2015	870	2/23/2015	1200	2/23/2015
Hexavalent Chromium	Future Metric - Enhanced Operations																			
Total Chromium ²	0.56	2/23/2015	0.13	2/23/2015	0.12	2/23/2015	0.61	2/26/2015	1.3	2/26/2015	0.17	2/23/2015	2.9	2/23/2015	5.4	2/23/2015	8	2/23/2015	17	2/23/2015

Notes:
 Flow reported as gpm is a daily average calculated from the totalizer reading.
 1: Analytical results are reported from TestAmerica.
 2: Quarterly results, most recent sampling concentrations listed (Samples will be transitioned to monthly reporting in the future).

Table 3 - Interceptor Well Field (IWF) Operational Metrics

Nevada Environmental Response Trust Groundwater Extraction and Treatment System Enhanced Operational Metrics																				
Date	I-G		I-H		I-I		I-J		I-K		I-L		I-M		I-N		I-O		I-P	
	Flow (gpm)	Level (ft)	Flow (gpm)	Level (ft)	Flow (gpm)	Level (ft)	Flow (gpm)	Level (ft)	Flow (gpm)	Level (ft)	Flow (gpm)	Level (ft)	Flow (gpm)	Level (ft)	Flow (gpm)	Level (ft)	Flow (gpm)	Level (ft)	Flow (gpm)	Level (ft)
03/01/15	0.17		0.92		4.79		6.62		4.71		2.93		2.29		1.45		1.54		2.04	
03/02/15	0.17		0.93		4.71		6.48		3.65		3.00		2.35		1.49		1.59		2.08	
03/03/15	0.17		0.91		4.84		6.59		4.16		3.03		2.32		1.46		1.56		2.05	
03/04/15	0.17		0.90		4.99		6.80		4.28		3.05		2.34		1.33		1.55		2.03	
03/05/15	0.17		0.89		4.79		6.56		4.13		3.07		2.32		1.14		1.53		2.02	
03/06/15	0.17		0.91		4.85		6.64		4.16		3.11		2.33		0.05 ³		1.54		2.02	
03/07/15	0.16		0.87		4.57		6.26		3.92		3.02		2.24		0.00		1.50		1.94	
03/08/15	0.17		0.90		4.91		6.69		4.20		3.21		2.35		0.00		1.55		2.02	
03/09/15	0.18		0.92		4.71		6.41		4.01		3.24		2.38		2.84 ⁴		1.54		2.05	
03/10/15	0.17		0.89		5.04		6.82		4.30		3.22		2.32		3.34		1.49		1.97	
03/11/15	0.17		0.90		4.87		6.63		4.17		3.24		2.33		3.07		1.51		2.00	
03/12/15	0.17		0.91		4.93		6.72		4.23		3.28		2.34		2.96		1.51		2.00	
03/13/15	0.17		0.89		4.67		6.38		4.02		3.25		2.31		2.87		1.33 ³		1.99	
03/14/15	0.17		0.90		4.75		6.47		4.07		3.27		2.33		2.86		1.46		1.98	
03/15/15	0.17		0.90		4.89		6.69		4.20		3.34		2.35		2.87		1.45		1.99	
03/16/15	0.17		0.90		4.83		6.59		4.15		3.37		2.35		2.84		1.46		1.98	
03/17/15	0.17		0.90		4.83		6.59		4.15		3.42		2.33		2.84		1.45		1.98	
03/18/15	0.17		0.90		4.81		6.56		4.11		3.46		2.35		2.85		1.45		1.97	
03/19/15	0.17		0.90		4.86		6.62		4.13		3.50		2.36		2.84		1.45		1.97	
03/20/15	0.17		0.89		4.76		6.49		4.04		3.50		2.36		2.82		1.46		1.95	
03/21/15	0.17		0.88		4.73		6.45		4.01		3.41		2.33		2.80		1.44		1.93	
03/22/15	0.17		0.90		4.88		6.66		4.14		3.63		2.38		2.87		1.47		1.97	
03/23/15	0.17		0.89		4.45		6.55		4.07		3.62		2.36		2.83		1.44		1.94	
03/24/15	0.17		0.89		4.83		6.60		4.09		3.61		2.38		2.88		1.43		1.95	
03/25/15	0.16		0.88		4.82		6.59		4.09		3.53		2.38		2.86		1.42		1.94	
03/26/15	0.17		0.89		4.83		6.59		4.05		3.43		2.36		2.86		1.43		1.93	
03/27/15	0.17		0.89		4.85		6.62		4.10		3.48		2.36		2.86		1.44		1.94	
03/28/15	0.18		0.89		4.52		6.30		3.91		3.36		2.23		2.78		1.45		1.96	
03/29/15	0.18		0.90		4.85		6.63		4.10		3.45		2.35		2.86		1.50		1.99	
03/30/15	0.19		0.90		4.80		6.55		4.06		3.40		2.33		2.83		1.50		2.01	
03/31/15	0.17		0.89		4.79		6.55		4.06		3.40		2.33		2.81		1.46		1.97	
Monthly Average	0.17		0.90		4.80		6.57		4.11		3.32		2.34		2.36		1.48		1.99	
Analytical ¹	Conc (mg/L)	Date	Conc (mg/L)	Date	Conc (mg/L)	Date	Conc (mg/L)	Date	Conc (mg/L)	Date	Conc (mg/L)	Date	Conc (mg/L)	Date	Conc (mg/L)	Date	Conc (mg/L)	Date	Conc (mg/L)	Date
Perchlorate ²	1500	2/23/2015	2300	2/23/2015	990	2/26/2015	330	2/27/2015	280	2/26/2015	940	2/23/2015	1200	2/23/2015	970	2/23/2015	1300	2/23/2015	1500	2/23/2015
Hexavalent Chromium	Future Metric - Enhanced Operations																			
Total Chromium ³	22	2/23/2015	21	2/23/2015	11	2/26/2015	3.4	2/27/2015	1.5	2/26/2015	0.95	2/23/2015	8	2/23/2015	9.3	2/23/2015	16	2/23/2015	18	2/23/2015

Notes:

Flow reported as gpm is a daily average calculated from the totalizer reading.

1: Analytical results are reported from TestAmerica.

2: Quarterly results, most recent sampling concentrations listed (Samples will be transitioned to monthly reporting in the future).

3: I-N motor failed.

4: I-N motor replaced and back online.

5: I-O was shut off for 2 hours for maintenance.

Table 3 - Interceptor Well Field (IWF) Operational Metrics

Nevada Environmental Response Trust I Groundwater Extraction and Treatment System I Enhanced Operational Metrics																				
Date	I-Q		I-R		I-S		I-T		I-U		I-V		I-W		I-X		I-Y		I-Z	
	Flow (gpm)	Level (ft)	Flow (gpm)	Level (ft)	Flow (gpm)	Level (ft)	Flow (gpm)	Level (ft)	Flow (gpm)	Level (ft)	Flow (gpm)	Level (ft)	Flow (gpm)	Level (ft)	Flow (gpm)	Level (ft)	Flow (gpm)	Level (ft)	Flow (gpm)	Level (ft)
03/01/15	0.43		2.49		4.33		0.42		0.92		4.87		0.77		3.34		1.50		7.22	
03/02/15	0.44		2.55		4.36		0.43		0.94		4.76		0.80		3.41		1.54		7.06	
03/03/15	0.44		2.57		4.35		0.42		0.94		4.89		0.79		3.37		1.54		7.22	
03/04/15	0.43		2.55		4.20		0.39		0.93		5.03		0.79		3.36		1.53		7.41	
03/05/15	0.44		2.48		4.15		0.49		0.94		4.84		0.79		3.38		1.53		7.14	
03/06/15	0.44		2.50		4.22		0.42		0.94		4.88		0.79		3.48		1.53		7.23	
03/07/15	0.43		2.40		4.06		0.42		0.91		4.59		0.76		3.41		1.47		6.80	
03/08/15	0.46		2.52		4.33		0.41		0.95		4.91		0.78		3.64		1.55		7.27	
03/09/15	0.46		2.52		4.29		0.43		0.96		4.68		0.80		3.61		1.56		6.95	
03/10/15	0.44		2.47		4.16		0.42		0.93		4.99		0.76		3.25		1.56		7.40	
03/11/15	0.43		2.48		4.16		0.42		0.95		4.83		0.79		3.17		1.54		7.20	
03/12/15	0.44		2.52		4.17		0.42		0.95		4.89		0.78		3.14		1.57		7.29	
03/13/15	0.43		2.50		4.13		0.46		0.95		4.63		0.77		3.07		1.54		6.92	
03/14/15	0.42		2.53		4.16		0.43		0.95		4.72		0.77		3.08		1.55		7.02	
03/15/15	0.43		2.57		4.23		0.39		0.95		4.85		0.76		3.08		1.56		7.23	
03/16/15	0.43		2.52		4.21		0.42		0.94		4.77		0.75		3.08		1.57		7.13	
03/17/15	0.42		2.50		4.18		0.42		0.94		4.77		0.72		3.07		1.56		7.13	
03/18/15	0.43		2.51		4.20		0.42		0.94		4.76		0.72		3.07		1.58		7.08	
03/19/15	0.43		2.51		4.24		0.49		0.94		4.81		0.75		3.09		1.56		7.16	
03/20/15	0.42		2.51		4.24		0.43		0.94		4.70		0.74		3.06		1.57		7.00	
03/21/15	0.43		2.47		4.16		0.36		0.92		4.64		0.74		3.03		1.54		6.96	
03/22/15	0.43		2.57		4.30		0.45		0.95		4.77		0.77		3.11		1.61		7.18	
03/23/15	0.42		2.50		4.24		0.43		0.93		4.71		0.76		3.07		1.59		7.05	
03/24/15	0.43		2.50		4.27		0.42		0.93		4.76		0.54		3.08		1.56		7.12	
03/25/15	0.43		2.51		4.29		0.41		0.93		4.74		0.73		3.06		1.57		7.10	
03/26/15	0.42		2.52		4.32		0.42		0.95		4.74		0.74		3.06		1.59		7.10	
03/27/15	0.42		2.54		4.35		0.45		0.95		4.76		0.66		3.07		1.58		7.14	
03/28/15	0.42		2.42		4.66		0.00		0.95		4.43		0.19		3.02		1.54		6.80	
03/29/15	0.43		2.43		4.16		0.00		0.96		4.73		0.04		3.05		1.59		7.20	
03/30/15	0.43		2.46		4.67		0.43 ⁶		0.96		4.66		0.05		3.05		1.58		7.08	
03/31/15	0.43		2.46		4.69		0.41		0.95		4.67		0.61 ⁷		3.05		1.56		7.08	
Monthly Average	0.43		2.50		4.27		0.40		0.94		4.77		0.68		3.19		1.56		7.12	
Analytical ¹	Conc (mg/L)	Date	Conc (mg/L)	Date	Conc (mg/L)	Date	Conc (mg/L)	Date	Conc (mg/L)	Date	Conc (mg/L)	Date	Conc (mg/L)	Date	Conc (mg/L)	Date	Conc (mg/L)	Date	Conc (mg/L)	Date
Perchlorate ²	1800	2/23/2015	1600	2/23/2015	650	2/23/2015	2000	2/23/2015	2000	2/23/2015	1200	2/26/2015	1300	2/23/2015	1500	2/23/2015	1600	2/23/2015	440	2/26/2015
Hexavalent Chromium	Future Metric - Enhanced Operations																			
Total Chromium ²	22	2/23/2015	0.5	2/23/2015	1.7	2/23/2015	23	2/23/2015	23	2/23/2015	11	2/26/2015	15	2/23/2015	12	2/23/2015	0.94	2/23/2015	7.4	2/26/2015

- Notes:
- Flow reported as gpm is a daily average calculated from the totalizer reading.
 - 1: Analytical results are reported from TestAmerica.
 - 2: Quarterly results, most recent sampling concentrations listed (Samples will be transitioned to monthly reporting in the future).
 - 6: I-T was reset. This well has no motor saver and needs to be reset after every East Well Field shut down. No mechanical trouble.
 - 7: The I-W flow meter slowed down due to the back pressure from the valve being barely open. The valve was opened for several seconds to allow the meter to spin and then closed back down.

Nevada Environmental Response Trust Groundwater Extraction and Treatment System Enhanced Operational Metrics																		
Date	LS #2	GWTP Effluent ¹				GW-11 Influent				FBR Plant Influent ¹								
	Flow (gpm)	Flow (gpm)	TA - Cr (TR) (mg/L)	TA - Cr (VI) (mg/L)	TA - ClO ₃ (mg/L)	Flow (gpm)	Cr (TR) (mg/L)	Cr (VI) (mg/L)	ClO ₃ (mg/L)	Flow (gpm)	TA - ClO ₂ (mg/L)	ETI - ClO ₂ (mg/L)	TA - ClO ₃ (mg/L)	TA - SO ₄ (mg/L)	TA - NO ₃ - N (mg/L)	TA-Cr (TR) (mg/L)	TA-Cr (VI) (mg/L)	
03/01/15	997	61				1057						70						
03/02/15	999	NA ²				NA ²						70						
03/03/15	1001	61				1061						71	100	1000	6.1	0.087	0.010	
03/04/15	999	60				1059						71						
03/05/15	1000	61	0.51	ND	970	1061						71						
03/06/15	1000	59				1059						73						
03/07/15	945	57				1003						74	90					
03/08/15	1000	60				1060						75						
03/09/15	919	62				981						74			7.7	0.050	0.027	
03/10/15	750 ⁴	63				813						76						
03/11/15	747	61				808						78						
03/12/15	750	62	0.30	ND	920	812						79						
03/13/15	751	61				812						79						
03/14/15	749	63				812						80	92					
03/15/15	750	61				811						84						
03/16/15	871	61				932						85			7	0.051	0.036	
03/17/15	997	61				1057						81						
03/18/15	997	61				1058						82						
03/19/15	998	61	0.60	ND	960	1059						83						
03/20/15	999	61				1060						82						
03/21/15	1000	62				1062						82	100					
03/22/15	998	61				1059						82						
03/23/15	999	61				1061						79			5.9	0.054	0.005	
03/24/15	999	62				1061						73						
03/25/15	1000	62				1062						72						
03/26/15	999	61				1061						72						
03/27/15	998	61				1059						73						
03/28/15	997	60				1056						74	97					
03/29/15	998	61	0.58	ND	980	1059						75						
03/30/15	999	61				1060						77						
03/31/15	996	62				1058						77						
Monthly Average	942	61	0.50	ND	958	1001						95	77	100	1,000	7	0.06	0.02

Notes:
 Flow reported as gpm is a daily average calculated from the totalizer reading.
 ND = Not detected above laboratory method detection limit (ClO₂ = 0.5 ug/L; ClO₃ = 10 ug/L; NO₃-N = 0.055 mg/L, CR(VI) = 0.25 ug/L).
 1: ETI = Envirogen internal process control data, TA = TestAmerica data.
 2: GWTP Effluent totalizer was calibrated and reset.
 3: Due to filling the GW-11 pond, flow from the PC wells was decreased and flow dropped from LS2 to PRP.

Table 4 - Treatment Plant Operational Metrics

Nevada Environmental Response Trust Groundwater Extraction and Treatment System Enhanced Operational Metrics																
Date	1st Stage FBR Influent			2nd Stage FBR Influent			FBR Plant Effluent ¹									
	Flow (gpm)	pH (s.u.)	ORP (mV)	Flow (gpm)	pH (s.u.)	ORP (mV)	Flow (gpm)	TA - ClO ₄ (mg/L)	ETI - ClO ₄ (mg/L)	TA - ClO ₃ (mg/L)	TA - Cr (TR) (mg/L)	TA - Cr (VI) (mg/L)	TA - SO ₄ (mg/L)	TA - NO ₃ - N (mg/L)	ETI - Turbidity (NTU)	
03/01/15	Future Metric - Enhanced Operations	7.4	-407	Future Metric - Enhanced Operations	7.7	-369	869								24	
03/02/15		7.4	-403		7.6	-369	869			ND	0.043	ND		1,200	ND	32
03/03/15		7.2	-393		7.6	-369	773			ND						29
03/04/15		7.1	-384		7.4	-358	828			ND						28
03/05/15		7.1	-384		7.4	-362	915			ND						23
03/06/15		7.1	-387		7.3	-359	947			ND						14
03/07/15		7.0	-380		7.2	-356	920		ND	ND						12
03/08/15		7.0	-375		7.1	-353	955			ND						21
03/09/15		6.9	-369		7.1	-350	944			ND	0.011	ND			0.33	20
03/10/15		6.9	-364		7.0	-342	946			ND						8
03/11/15		6.9	-368		7.1	-352	961			ND						9
03/12/15		7.0	-374		7.2	-352	941			ND						8
03/13/15		7.0	-374		7.1	-353	943			ND						12
03/14/15		7.0	-374		7.0	-351	933		ND	ND						8
03/15/15		7.0	-376		7.1	-354	919			ND						14
03/16/15		7.0	-379		7.0	-356	932			ND	0.0071	ND			0.49	16
03/17/15		7.0	-381		7.0	-359	950			ND						6
03/18/15		7.0	-383		7.1	-360	934			ND						7
03/19/15		7.0	-382		7.1	-358	929			ND						14
03/20/15		7.0	-384		7.1	-362	918			ND						8
03/21/15		7.0	-386		7.1	-362	925		ND	ND						14
03/22/15		7.1	-386		7.2	-364	945			ND						14
03/23/15		7.1	-391		7.4	-376	910			ND	0.013	ND			ND	16
03/24/15		7.2	-396		7.4	-378	927			ND						19
03/25/15		7.2	-397		7.4	-377	908			ND						2
03/26/15		7.1	-397		7.4	-375	926			ND						1
03/27/15		7.1	-396		7.3	-375	923			ND						5
03/28/15		7.1	-396		7.2	-375	928		ND	ND						6
03/29/15		7.0	-393		7.1	-363	905			ND						11
03/30/15		7.0	-392		7.2	-366	930			ND						13
03/31/15		7.0	-394		7.3	-368	907			ND						13
Monthly Average		7.1	-385		7.2	-362	918	ND	ND	ND	0.02	ND	1,200	ND	14	

Notes:

Flow reported as gpm is a daily average calculated from the totalizer reading.

ND = Not detected above laboratory method detection limit (ClO₄ = 0.5 ug/L; ClO₃ = 10 ug/L; NO₃-N = 0.055 mg/L, CR(VI) = 0.25 ug/L).

1: ETI = Envirogen internal process control data, TA = TestAmerica data.

GW-11 Level Monitoring		
Date	Field Measurement (ft)	Volume (MG)
3/14/2015	20.2	49.8
3/26/2015	20.3	49.6

GW-11 Leak Detection Monitoring ¹				
Date	Amount Pumped (gallons)			
	NW Corner	NE Corner	SW Corner	SE Corner
3/14/2015	375	1340	450	750
3/26/2015	1560	5640	600	150

GW-11 Composite Sample ²		
Analytes	Concentration	Units
Perchlorate	81	mg/L
Chlorate	170	mg/L
Ammonia as N	0.35	mg/L
Total Phosphorus	0.37	mg/L
Total Dissolved Solids (TDS)	5700	mg/L
Total Suspended Solids (TSS)	40	mg/L
pH	8.29	s.u.
Calcium	310	mg/L
Iron	0.67	mg/L
Chromium (total)	0.081	mg/L
Chromium VI	0.024	mg/L
Chloride	1700	mg/L
Nitrate as N	5.9	mg/L
Sulfate	1500	mg/L

Notes:

1: Tetra Tech is currently evaluating the volumes as reported by ETI, the GW-11 Pond liner system, and potential corrective actions to overcome the obstruction and lower the pump to the bottom of the NE leak detection point.

2: Corner Composite Sample collected on: March 31, 2015 by Envirogen.

Nevada Environmental Response Trust Groundwater Extraction and Treatment System Enhanced Operational Metrics						
Date	Flow ¹ (gpm)	FBR Influent Concentration			Influent Function Load ² (lbs/day)	6 Month Rolling Average (lbs/day)
		ClO ₄ (mg/L)	NO ₃ as N (mg/L)	ClO ₃ (mg/L)		
Apr 2014	966	56	4.0	110	376	768
May 2014	951	84	8.9	170	594	485
June 2014	906	123	9.0	220	735	568
July 2014	786	123	8.8	220	636	585
Aug 2014	880	116	10.6	190	663	601
Sept 2014	828	120	10.8	200	649	609
Oct 2014	825	113	12.0	200	645	654
Nov 2014	828	108	9.4	160	548	646
Dec 2014	785	118	11	210	628	628
Jan 2015	844	84	6.6	190	628	627
Feb 2015	1021	101	7.0	210	542	613
Mar 2015	918	95	7.0	100	445	584

Notes:

Concentrations and flow are presented as monthly average.

1: Flow used in loading calculation is average monthly FBR effluent flow to be consistent with historical loading calculations.

2: FBR loading calculated as $[0.9 \cdot \text{NO}_3 \text{ as N} + 0.17 \cdot \text{ClO}_3 + 0.18 \cdot \text{ClO}_4 \cdot \text{Flow} \cdot 1440 / 1000000 \cdot 8.34]$.

Figure 1 - GW-11 Pond Volume and Perchlorate Concentration

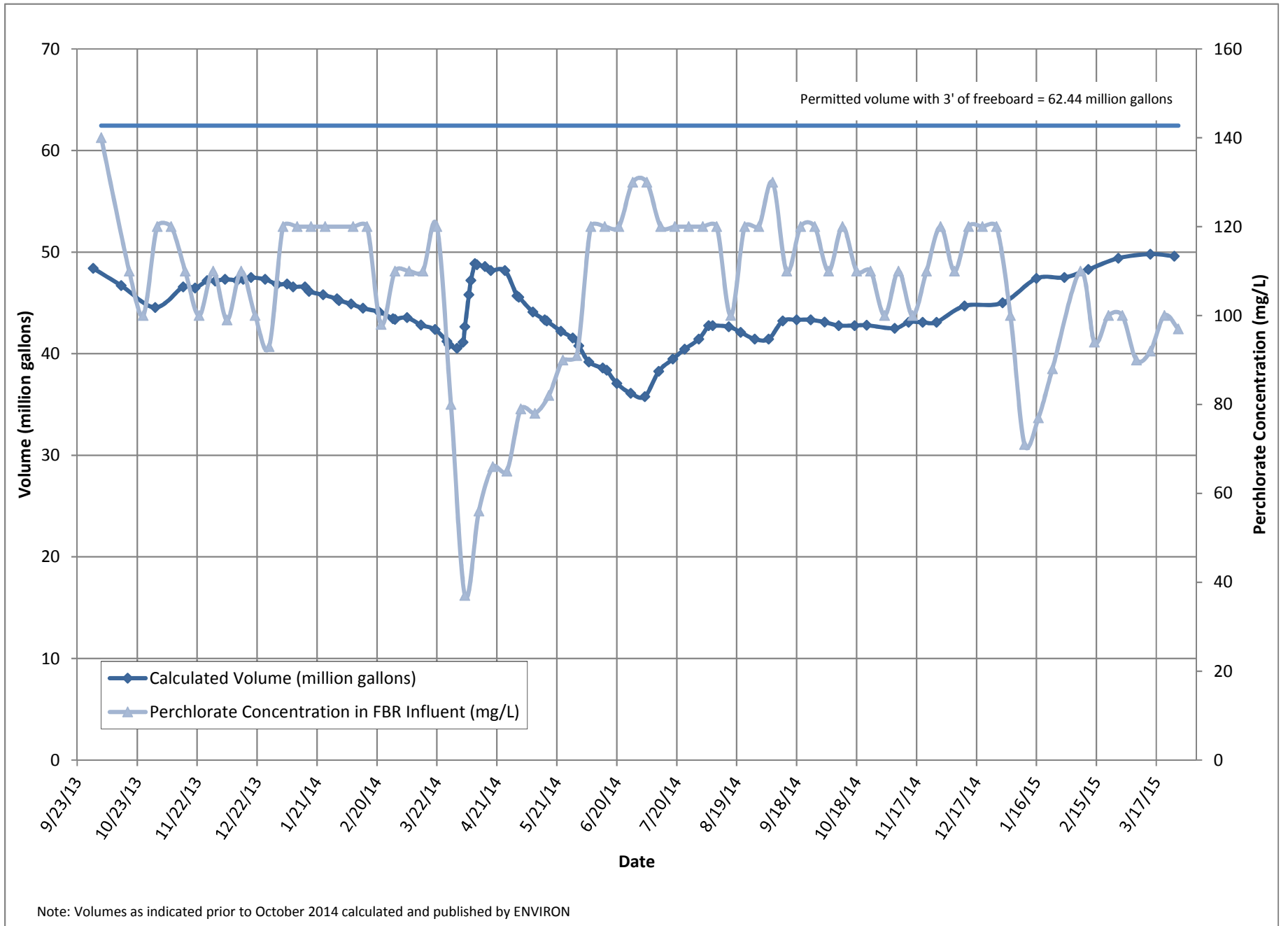


Figure 2 - FBR Equivalent Loading Calculation

