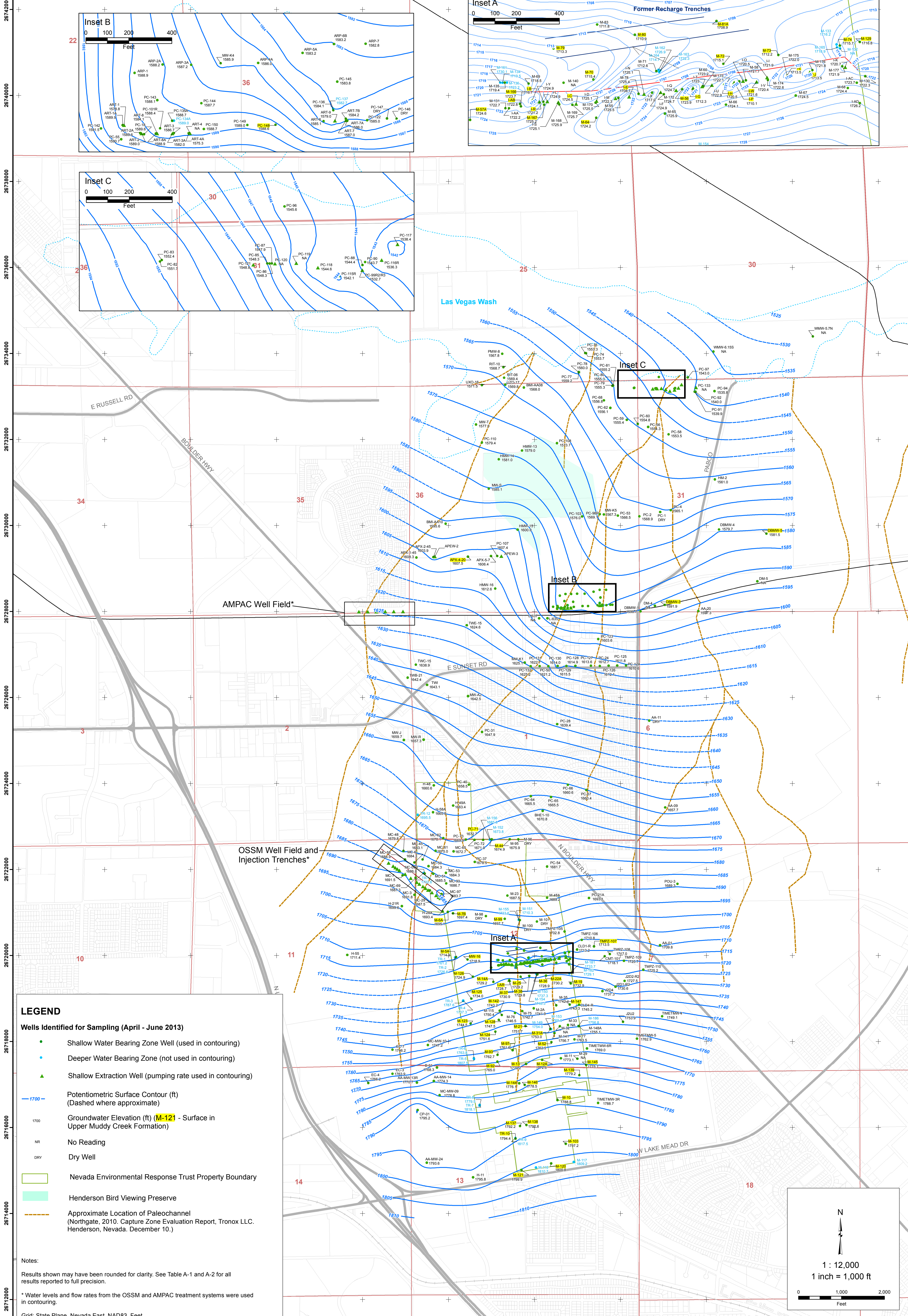
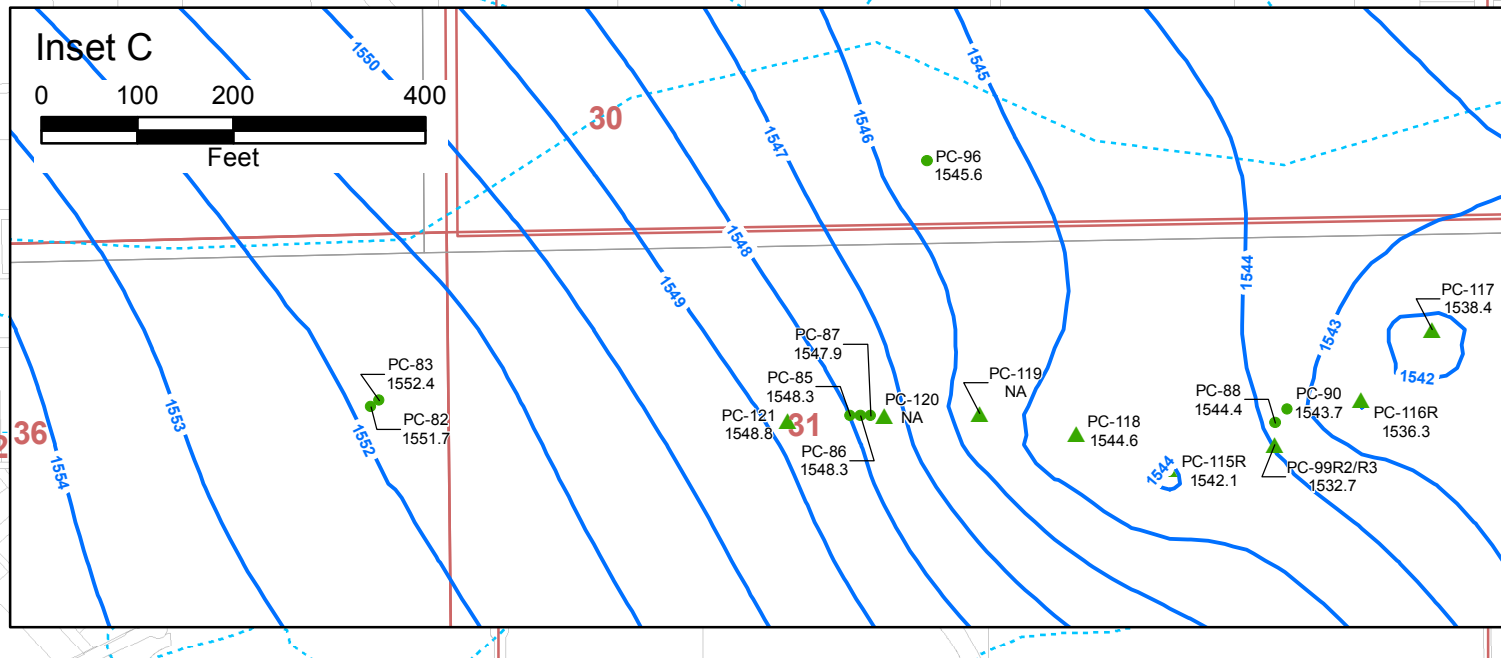
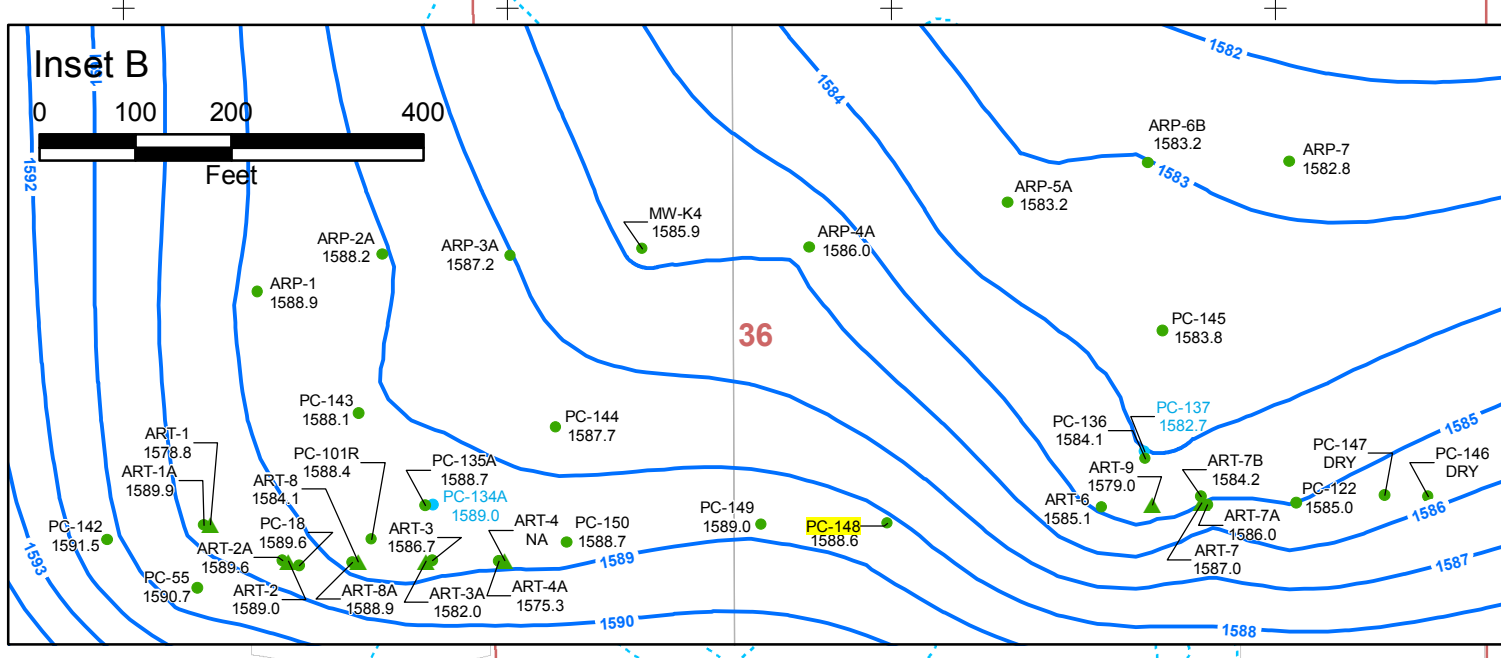
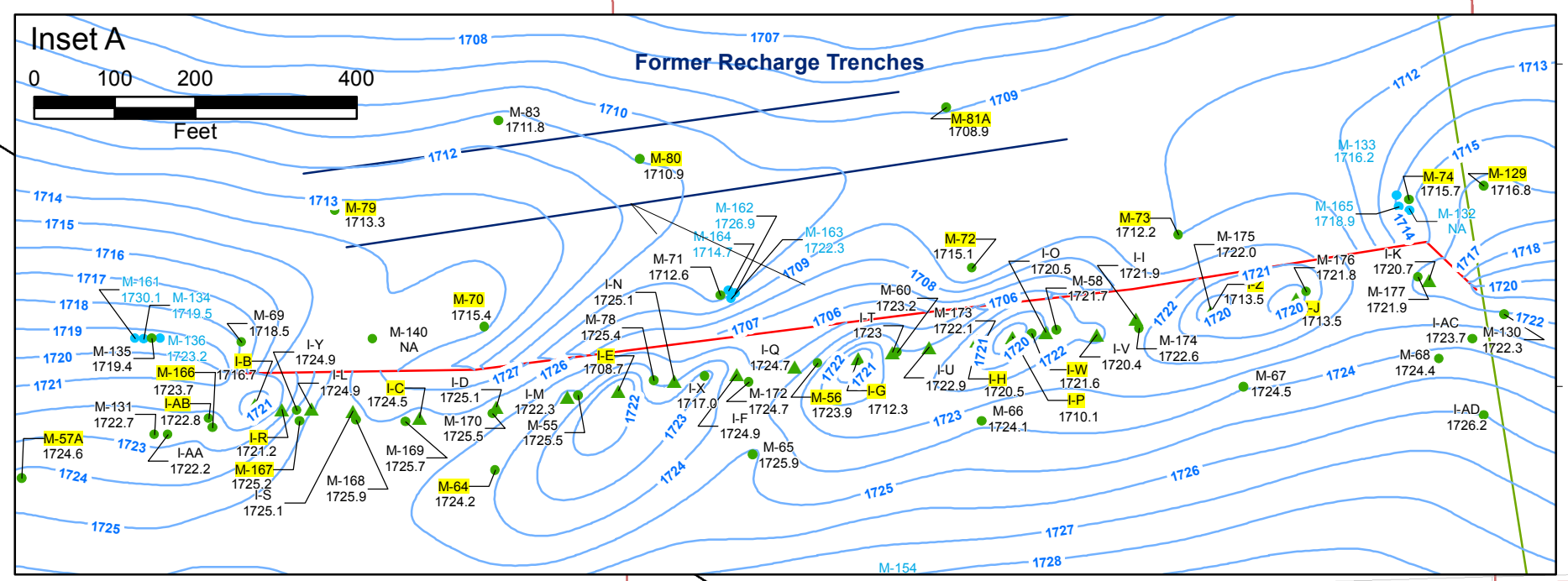


816000 818000 820000 822000 824000 826000 828000 830000 832000 834000 836000

26742000 26740000 26738000 26736000 26734000 26732000 26730000 26728000 26726000 26724000 26722000 26720000 26718000 26716000 26714000 26712000



LEGEND

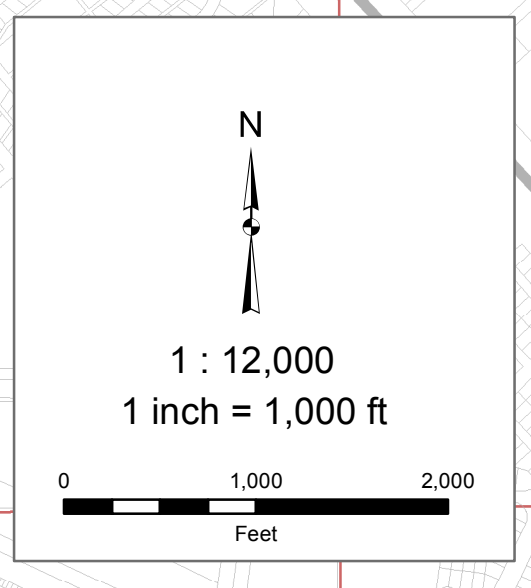
- Shallow Water Bearing Zone Well (used in contouring)
- Deeper Water Bearing Zone (not used in contouring)
- ▲ Shallow Extraction Well (pumping rate used in contouring)
- Potentiometric Surface Contour (ft) (Dashed where approximate)
- 1700 Groundwater Elevation (ft) (M-121 - Surface in Upper Muddy Creek Formation)
- NR No Reading
- DRY Dry Well
- ▭ Nevada Environmental Response Trust Property Boundary
- ▭ Henderson Bird Viewing Preserve
- - - Approximate Location of Paleochannel (Northgate, 2010, Capture Zone Evaluation Report, Tronox LLC, Henderson, Nevada, December 10.)

Notes:

Results shown may have been rounded for clarity. See Table A-1 and A-2 for all results reported to full precision.

* Water levels and flow rates from the OSSM and AMPAC treatment systems were used in contouring.

Grid: State Plane, Nevada East, NAD83, Feet



Path: H:\LePerone\NERT\Annual Performance Reports\2013 Annual Performance Report\Plates\Large-Format\Plate2 - Pot Surf Map.mxd

Plate 2

**POTENTIOMETRIC SURFACE MAP
SHALLOW WATER-BEARING ZONE
SECOND QUARTER 2013**

Annual Performance Report
Nevada Environmental Response Trust (NERT)
Henderson, Nevada

DESIGNED BY:	NO.	DESCRIPTION:	DATE:	BY:
EJK	0	GENERATE APPROVED MAP	8/28/2013	RS
DRAWN BY:				
EJK/RS				
CHECKED BY:				
KL/CS				
APPROVED BY:				
CJR				

