

Path: H:\LePetomane\NERTGWETS21-32100H05 - Mass Calculations\Python\GIS Maps\Spline1_Spline_cr_2006.mxd



2200 Powell St., Suite 700, Emeryville, CA 94608

Spline Interpolation of Groundwater Chromium (2006)
Nevada Environmental Response Trust Site, Henderson, Nevada

Drafter: EA

Date: 8/29/2013

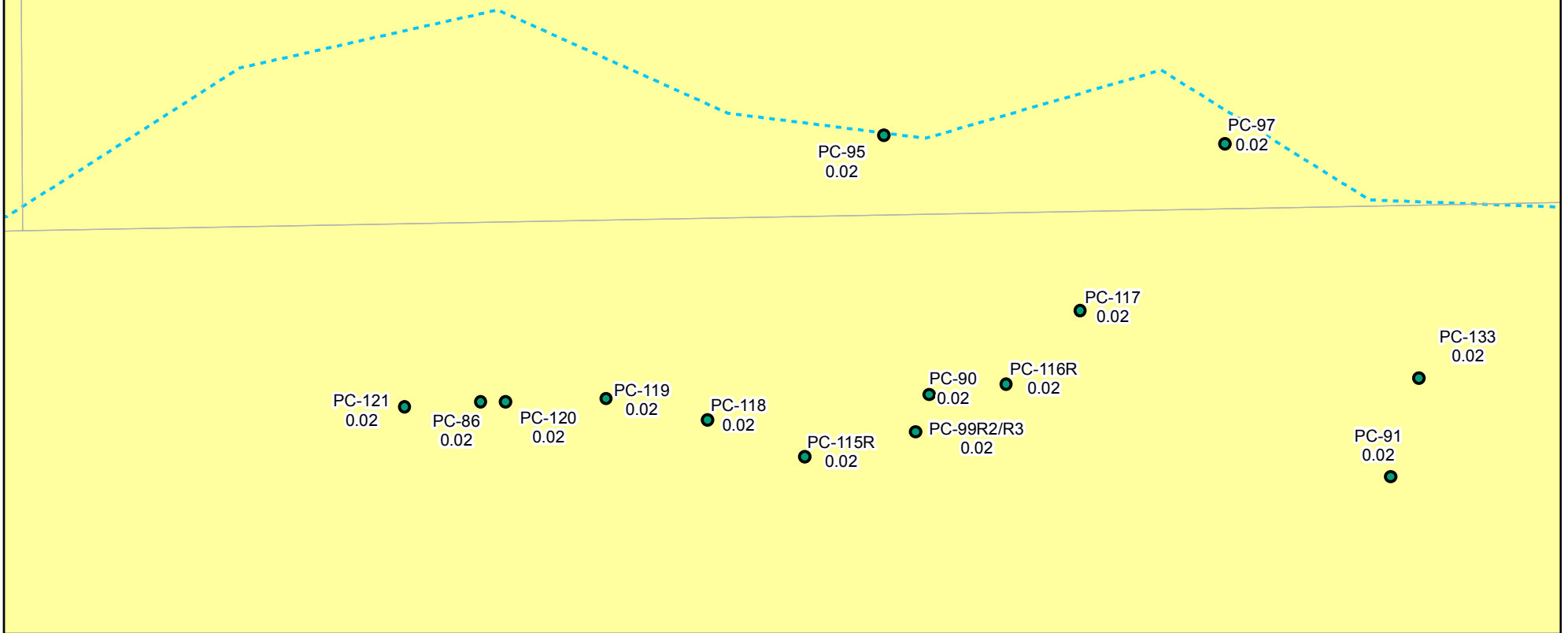
Contract Number: 21-32100H05

Approved by:

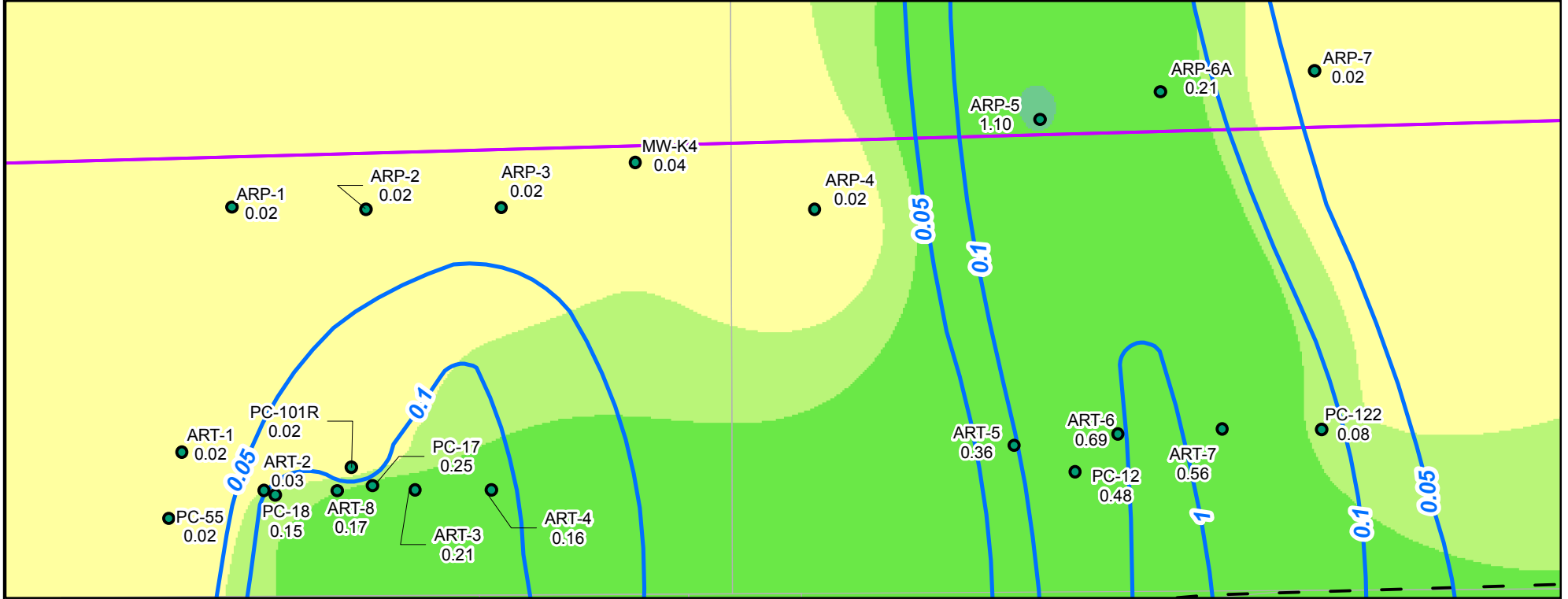
Revised:

Figure
2-1a

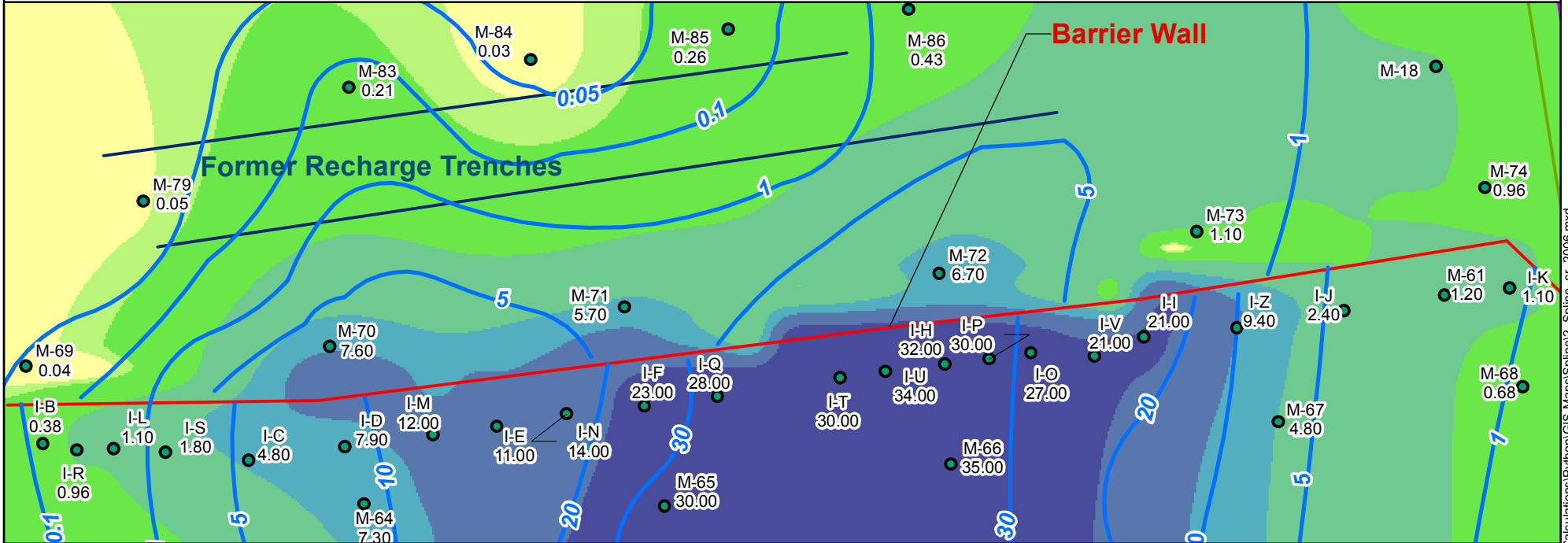
Inset C



Inset B



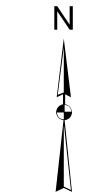
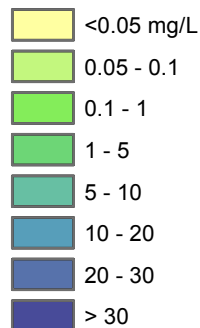
Inset A



LEGEND

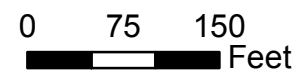
- Shallow Water Bearing Zone Well (used in Contouring)
- 1- Total Chromium Iso-concentration Line (mg/L)
(Dashed where approximate)
- 1700 Total Chromium Concentration (mg/L)
- Plume Mass Estimation Boundary

Chromium Interpolated Concentrations for 2006 (Spline)



1 : 1,800

1 inch = 150 ft



Grid: State Plane, Nevada East, NAD83, Feet



2200 Powell St., Suite 700, Emeryville, CA 94608

Spline Interpolation of Groundwater Chromium (2006)
Nevada Environmental Response Trust Site, Henderson, Nevada

Drafter: EA

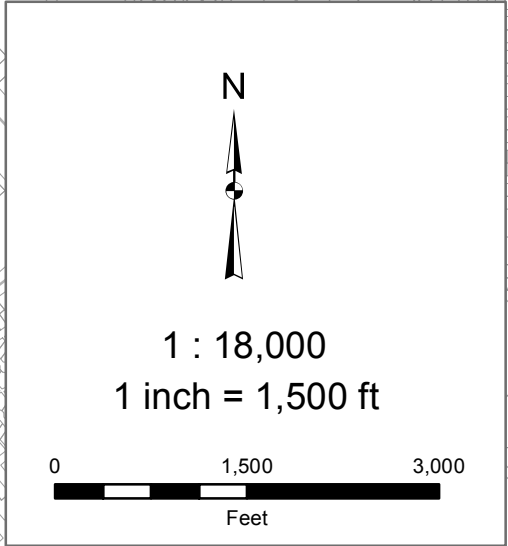
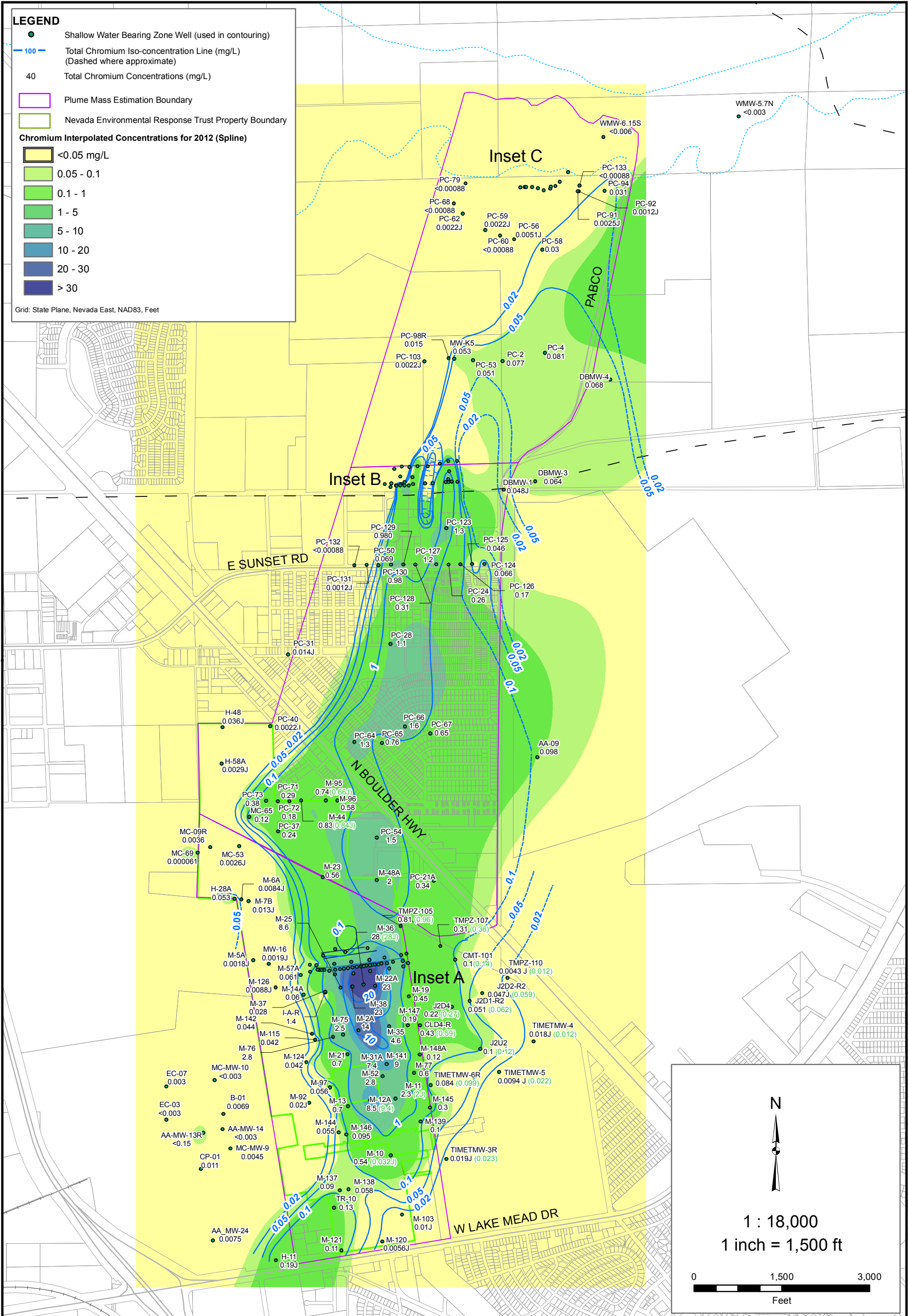
Date: 8/29/2013

Contract Number: 21-32100H05

Approved by:

Revised:

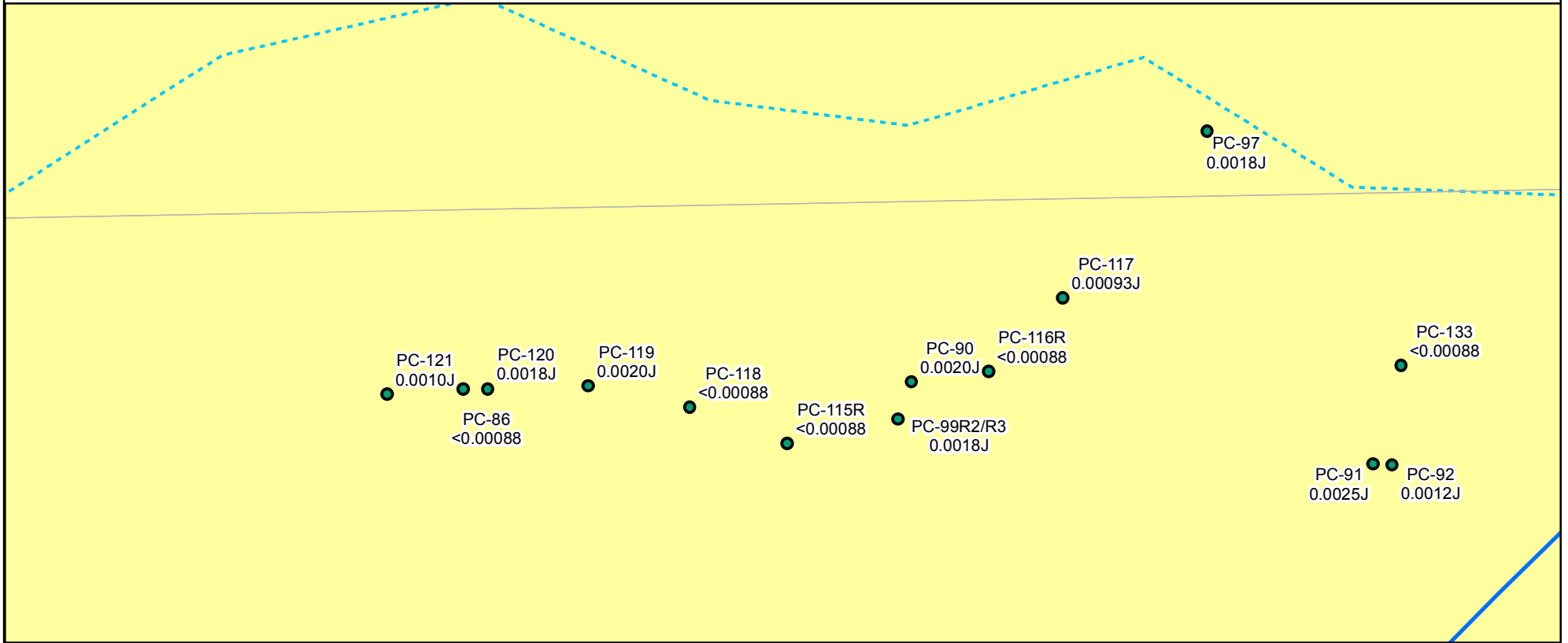
Figure
2-1b



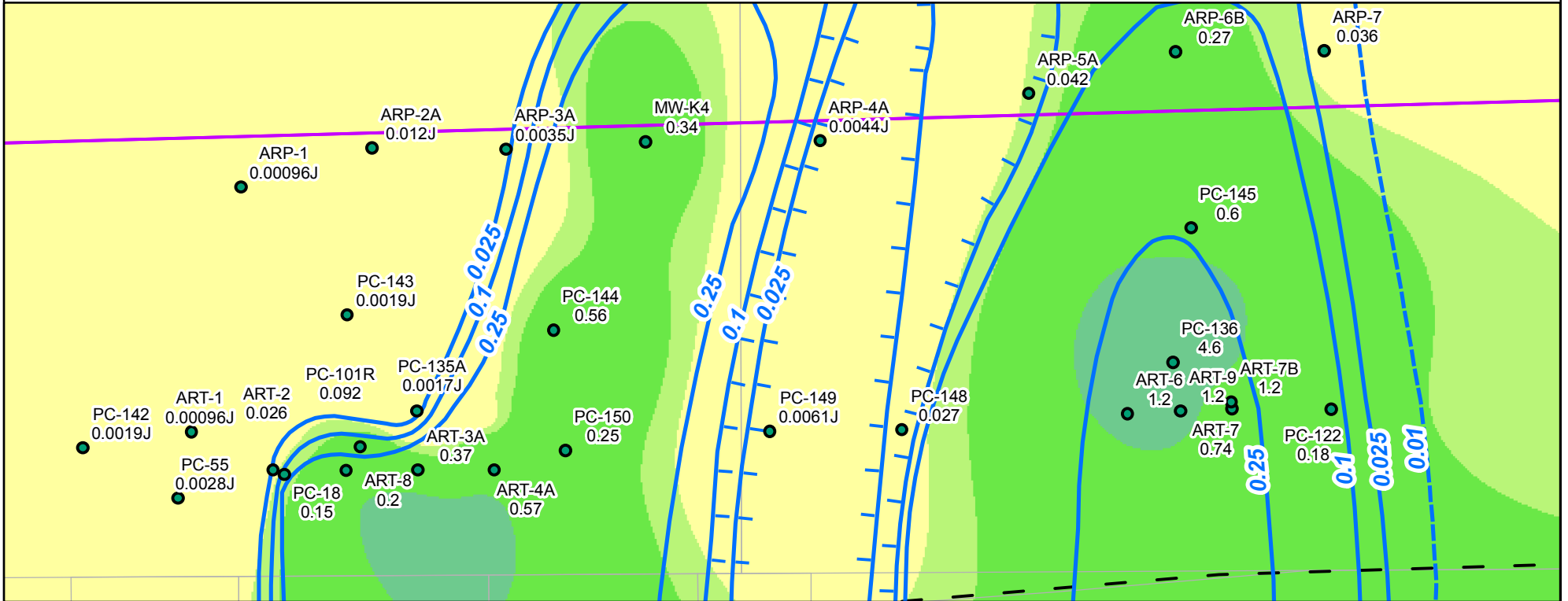
Spline Interpolation of Groundwater Chromium (2012)
Nevada Environmental Response Trust Site, Henderson, Nevada

Figure
2-2a

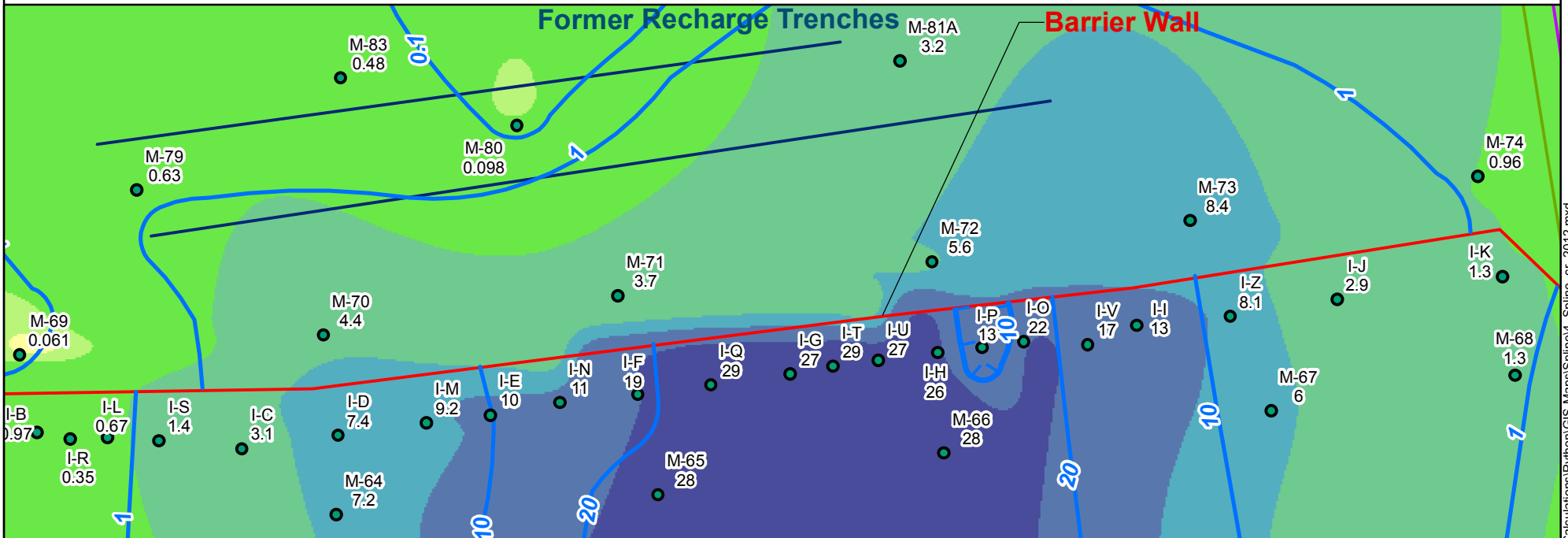
Inset C



Inset B



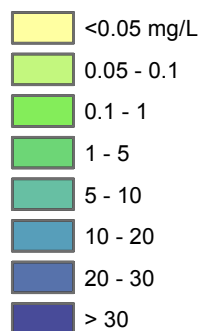
Inset A



LEGEND

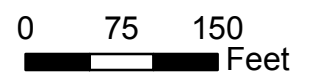
- Shallow Water Bearing Zone Well (used in Contouring)
- 1- Perchlorate Iso-concentration Line (mg/L) (Dashed where approximate)
- 1700 Total Chromium Concentration (mg/L)
- ▭ Plume Mass Estimation Boundary

Chromium Interpolated Concentrations for 2012 (Spline)



1:1,800

1 inch = 150 ft



Grid: State Plane, Nevada East, NAD83, Feet



2200 Powell St., Suite 700, Emeryville, CA 94608

Spline Interpolation of Groundwater Chromium (2012)
Nevada Environmental Response Trust Site, Henderson, Nevada

Drafter: EA

Date: 8/29/2013

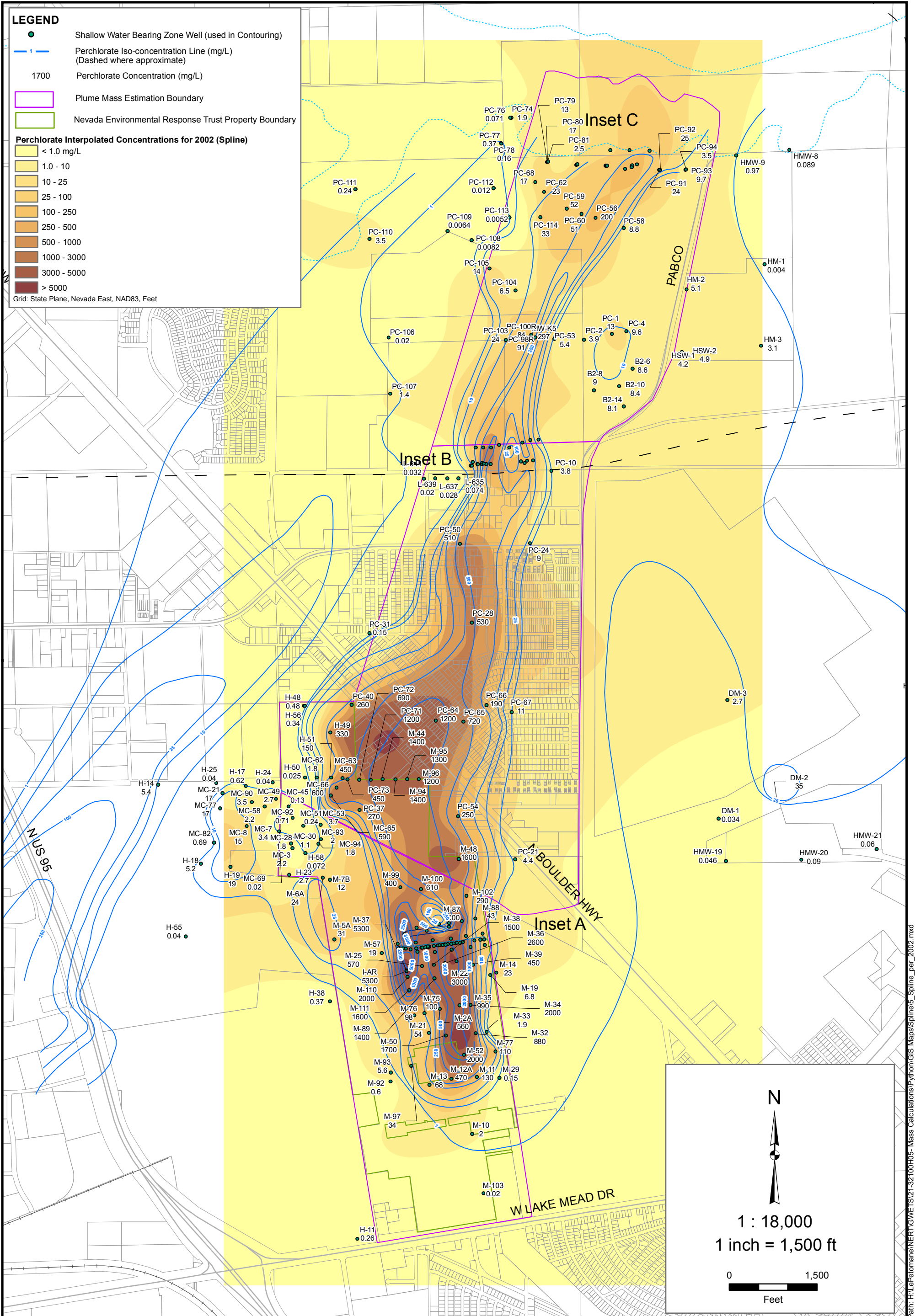
Contract Number: 21-32100H05

Approved by:

Revised:

Figure
2-2b

Path: H:\LePetomane\NERT\GWETS\21-32100H05 - Mass Calculations\Python\GIS Maps\Spline4_Spline_cr_2012.mxd



Spline Interpolation of Groundwater Perchlorate (2002)
 Nevada Environmental Response Trust Site, Henderson, Nevada

Figure
2-3a

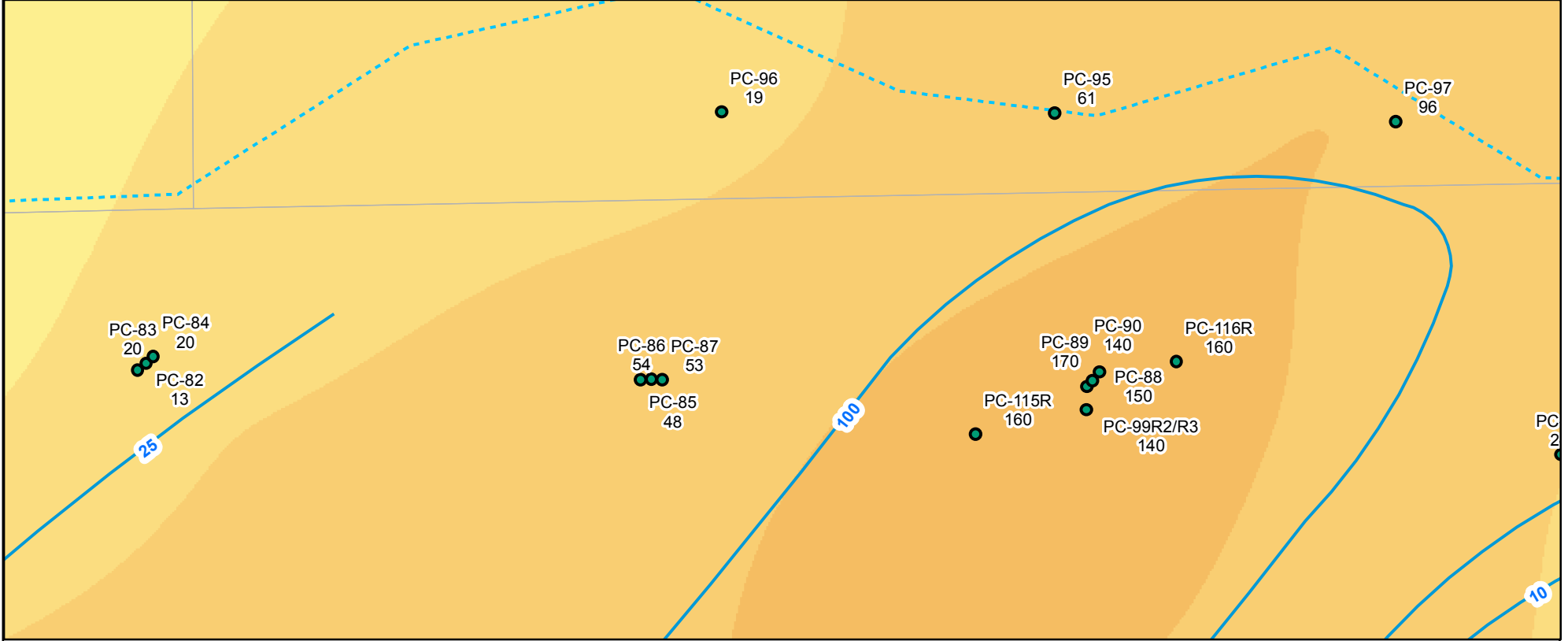


2200 Powell St., Suite 700, Emeryville, CA 94608

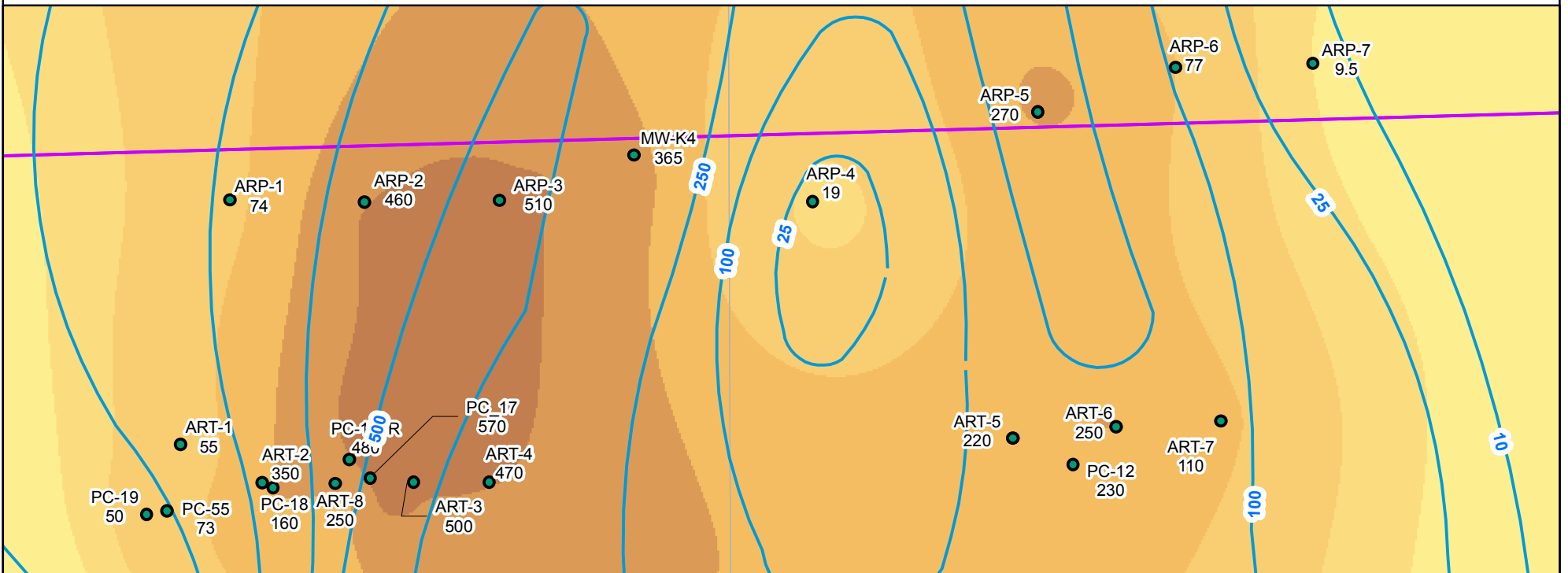
Drafter: EA Date: 8/29/2013 Contract Number: 21-32100H05 Approved by: Revised:

Path: H:\Perchlorate\NERT\GIS\Map_Splines\Mass_Calculations\Python\GIS_Maps\Spline5_Spline_per_2002.mxd

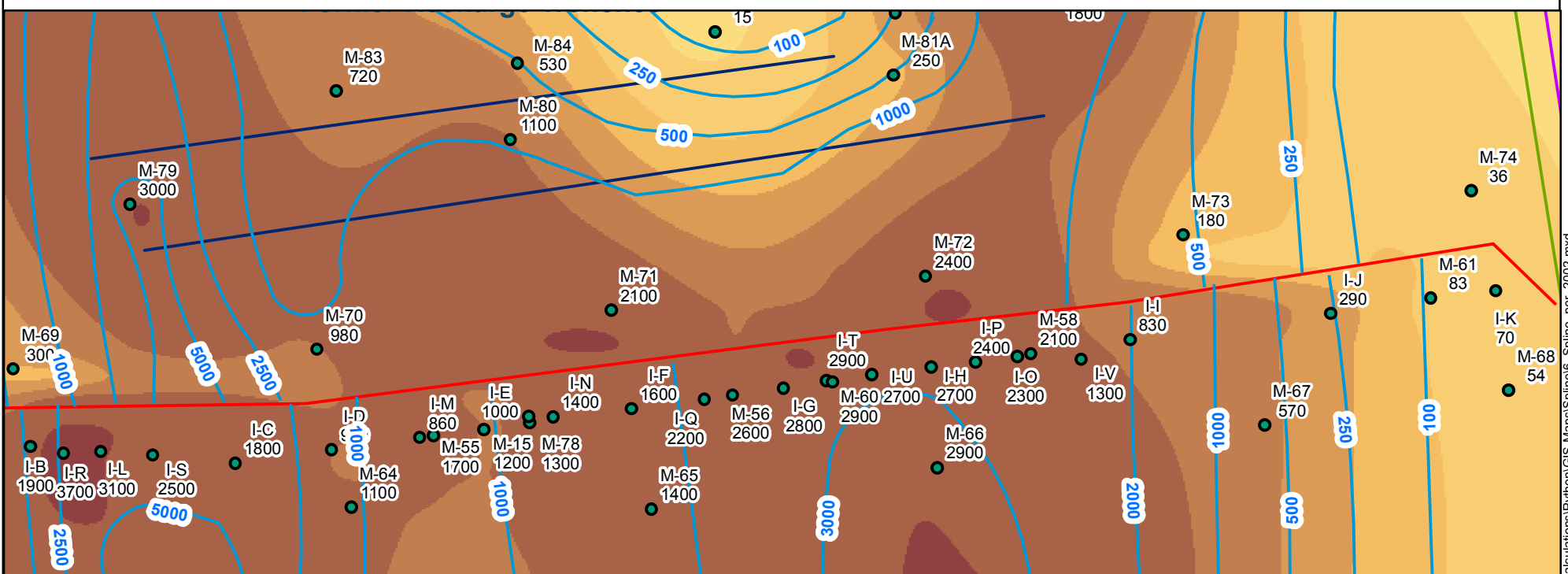
Inset C



Inset B

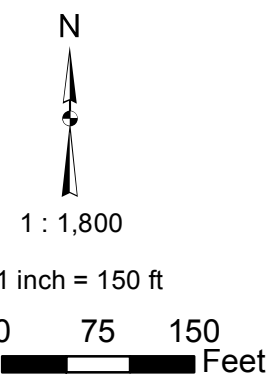
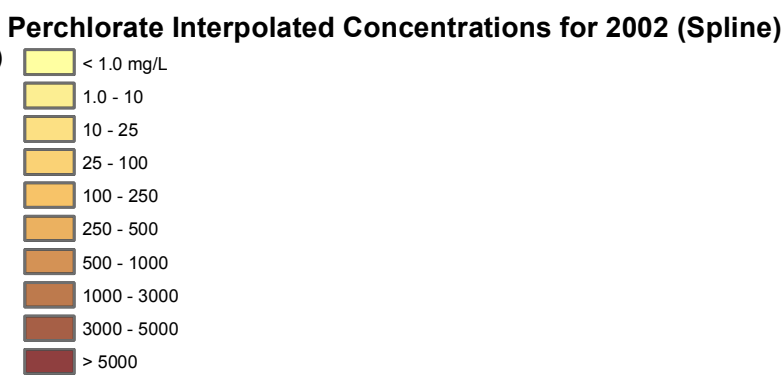


Inset A



LEGEND

- Shallow Water Bearing Zone Well (used in Contouring)
- - - Perchlorate Iso-concentration Line (mg/L)
(Dashed where approximate)
- 1700 Perchlorate Concentration (mg/L)
- Plume Mass Estimation Boundary



Grid: State Plane, Nevada East, NAD83, Feet

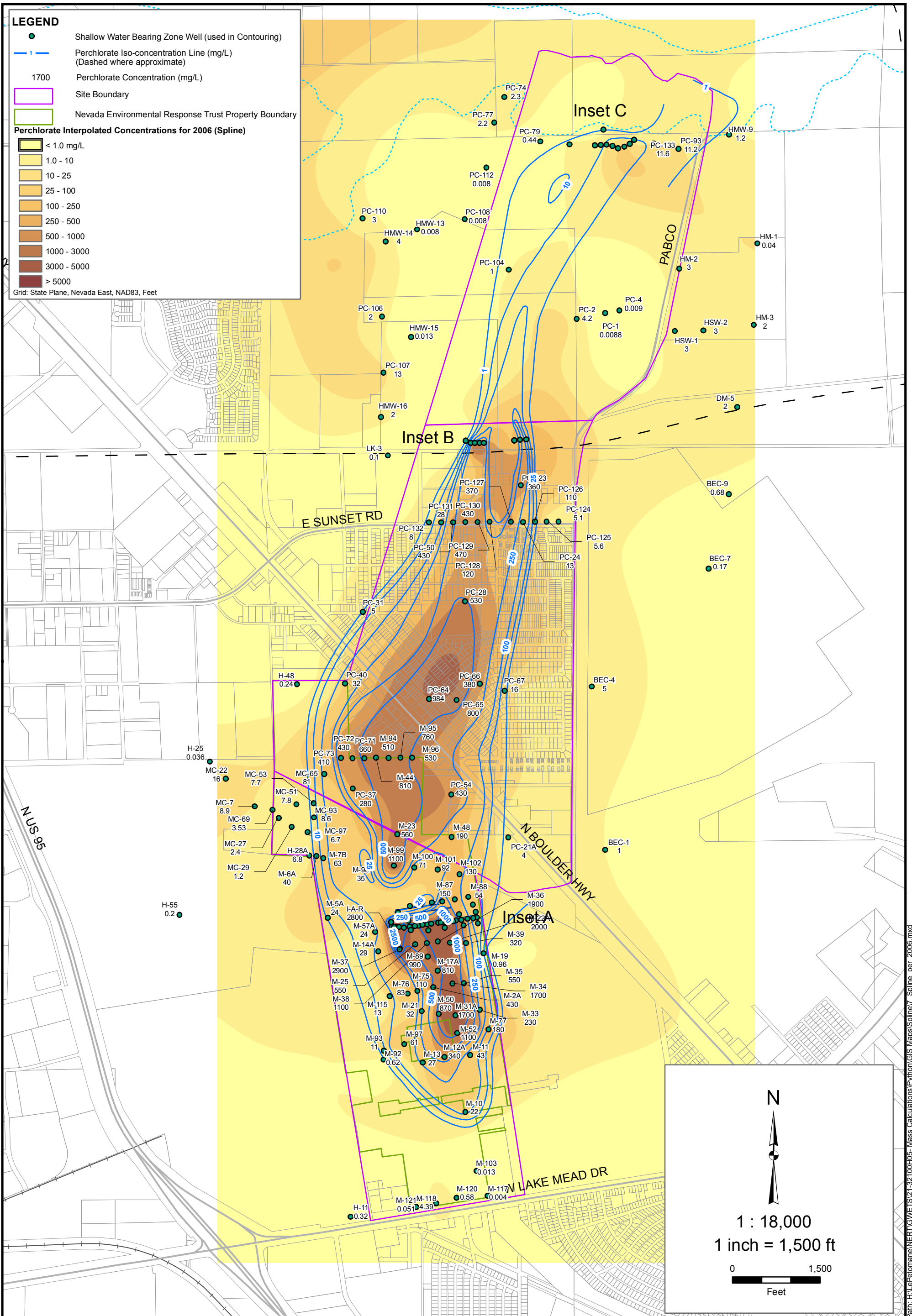
Spline Interpolation of Groundwater Perchlorate (2002)
Nevada Environmental Response Trust Site, Henderson, Nevada

Figure
2-3b

ENVIRON
2200 Powell St., Suite 700, Emeryville, CA 94608

Drafter: EA Date: 8/29/2013 Contract Number: 21-32100H05 Approved by: Revised:

Path: H:\LePetomane\NERT\GWS\21-32100H05 - Mass Calculations\Python\GIS Maps\Spline6_Spline_per_2002.mxd



Path: H:\Perfomance\NERT\GIS\21-32100H05 - Mass Calculations\Python\GIS Maps\Spline7_Spline_per_2006.mxd



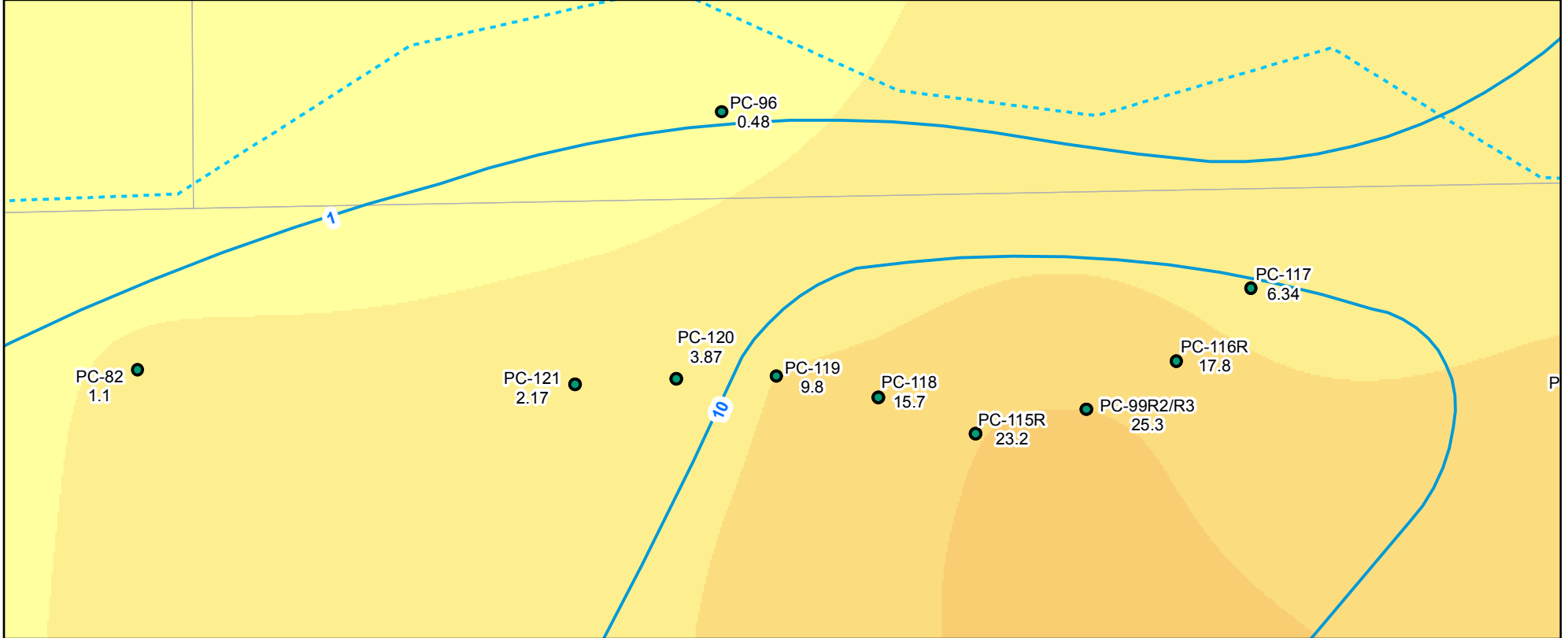
2200 Powell St., Suite 700, Emeryville, CA 94608

Spline Interpolation of Groundwater Perchlorate (2006)
 Nevada Environmental Response Trust Site, Henderson, Nevada

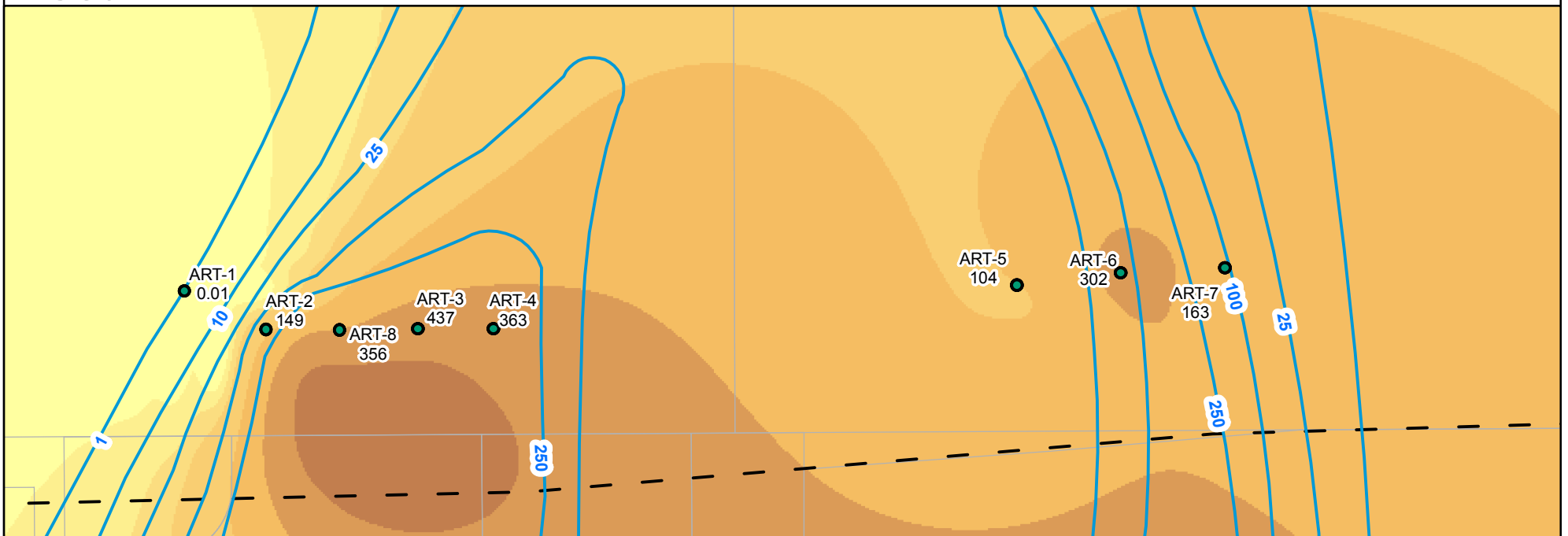
Drafter: EA Date: 8/29/2013 Contract Number: 21-32100H05 Approved by: Revised:

Figure
2-4a

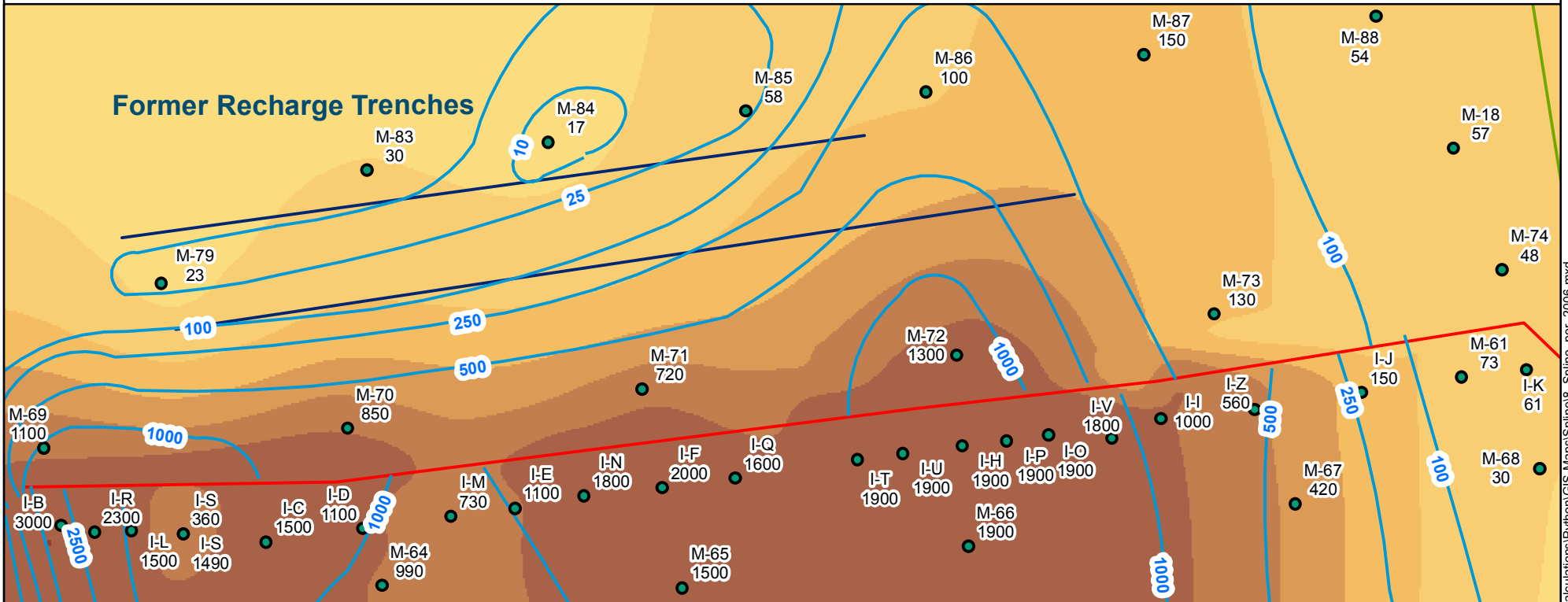
Inset C



Inset B



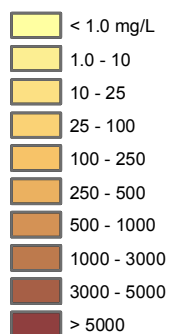
Inset A



LEGEND

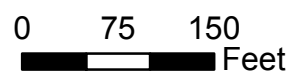
- Shallow Water Bearing Zone Well (used in Contouring)
- 1- Perchlorate Iso-concentration Line (mg/L)
(Dashed where approximate)
- 1700 Perchlorate Concentration (mg/L)
- Plume Mass Estimation Boundary

Perchlorate Interpolated Concentrations for 2006 (Spline)



1 : 1,800

1 inch = 150 ft



Grid: State Plane, Nevada East, NAD83, Feet



2200 Powell St., Suite 700, Emeryville, CA 94608

Spline Interpolation of Groundwater Perchlorate (2006)
Nevada Environmental Response Trust Site, Henderson, Nevada

Drafter: EA

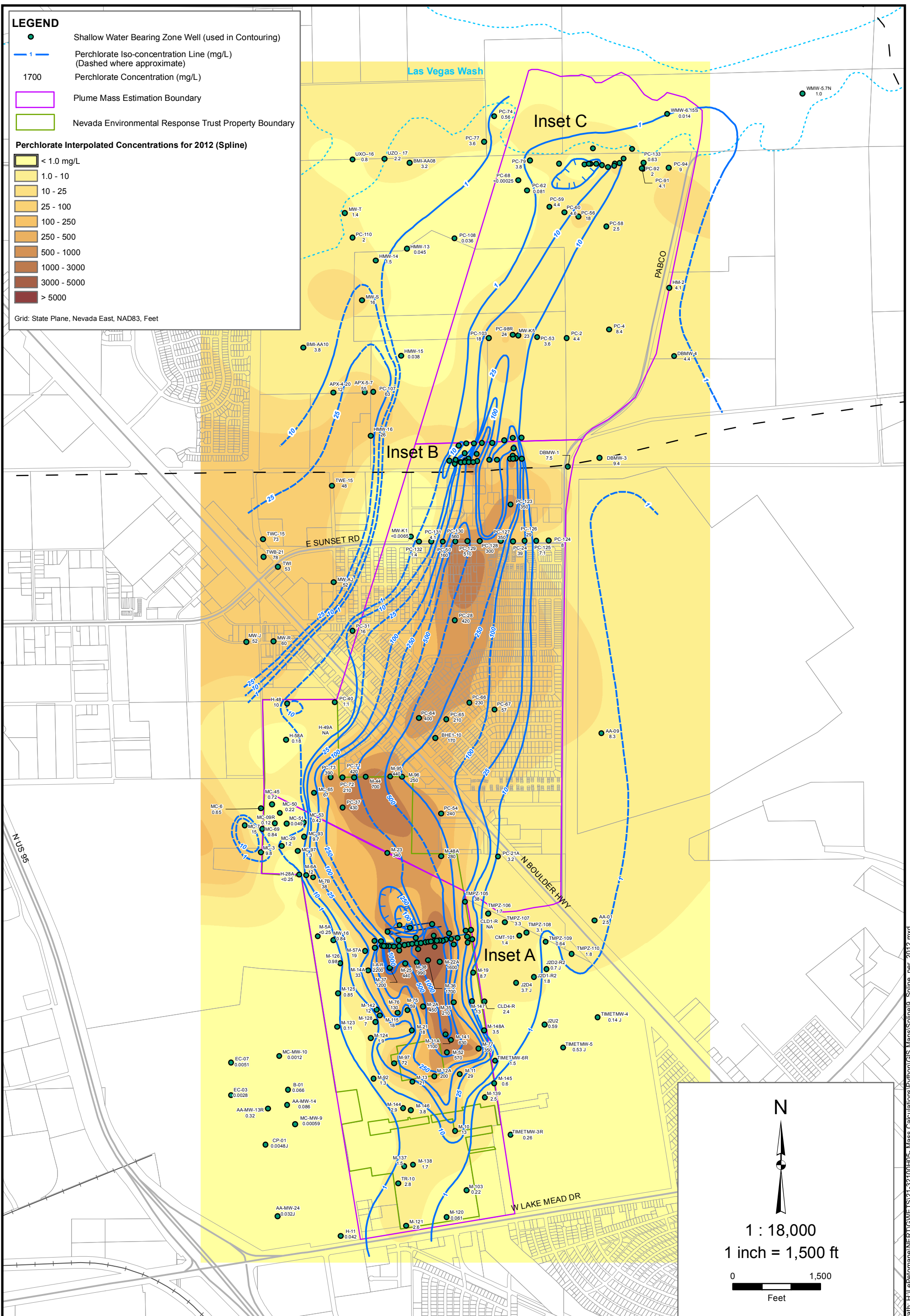
Date: 8/29/2013

Contract Number: 21-32100H05

Approved by:

Revised:

Figure
2-4b



Path: H:\Perфомane\NERT\GIS\21-32100H05-Mass Calculations\Python\GIS Maps\Spline9_Spline_per_2012.mxd

Spline Interpolation of Groundwater Perchlorate (2012)
 Nevada Environmental Response Trust Site, Henderson, Nevada

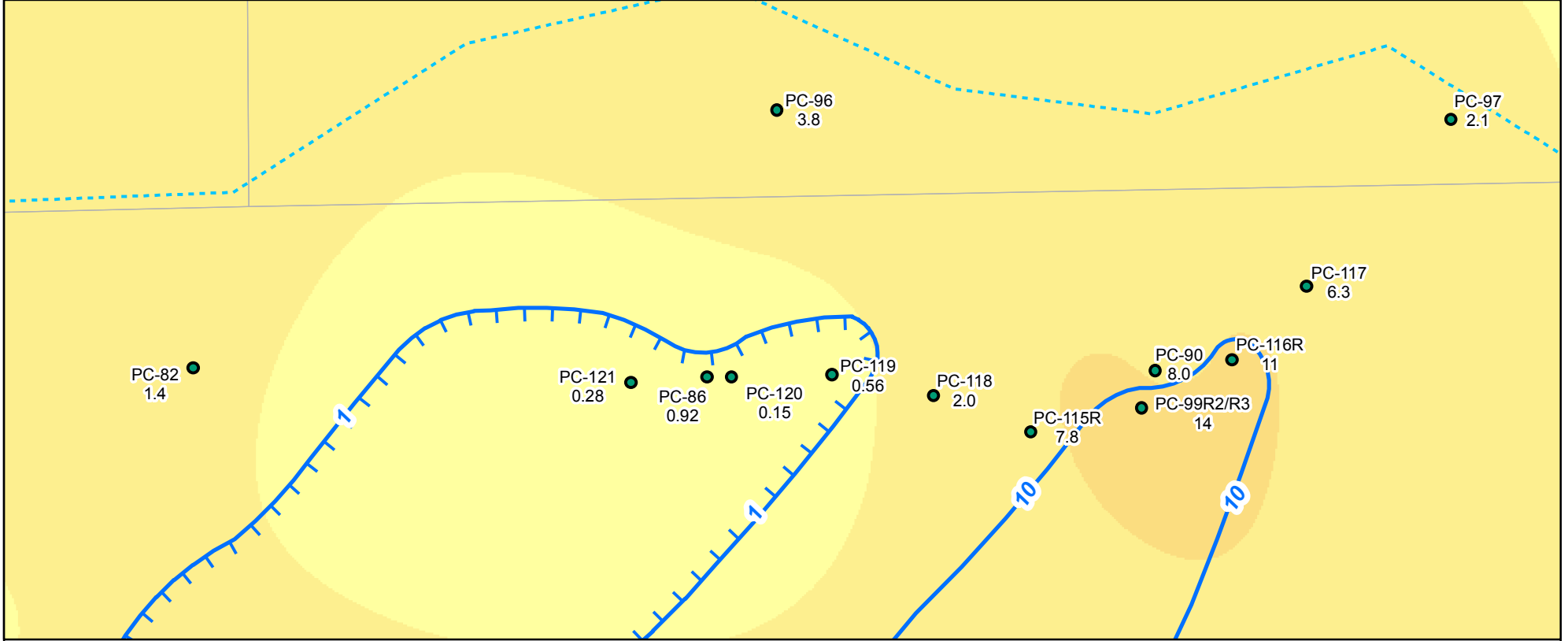
Figure
2-5a



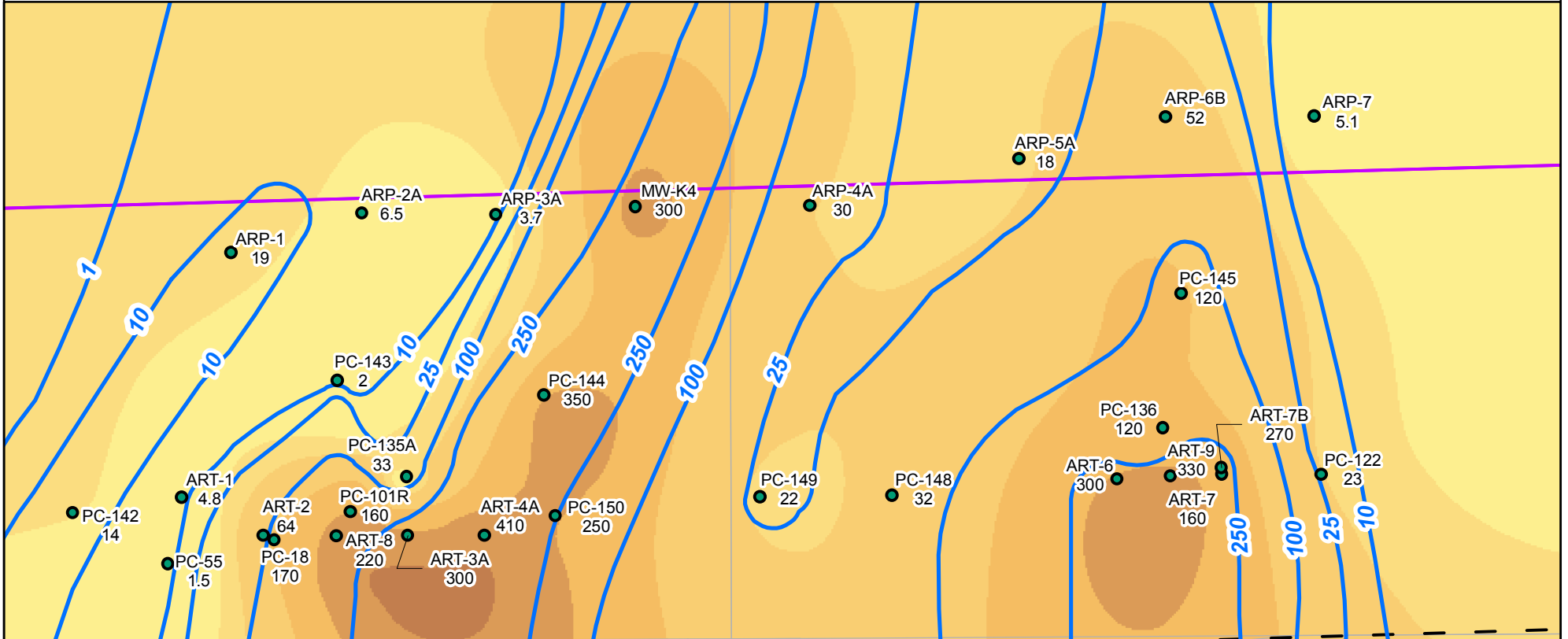
2200 Powell St., Suite 700, Emeryville, CA 94608

Drafter: EA Date: 8/29/2013 Contract Number: 21-32100H05 Approved by: Revised:

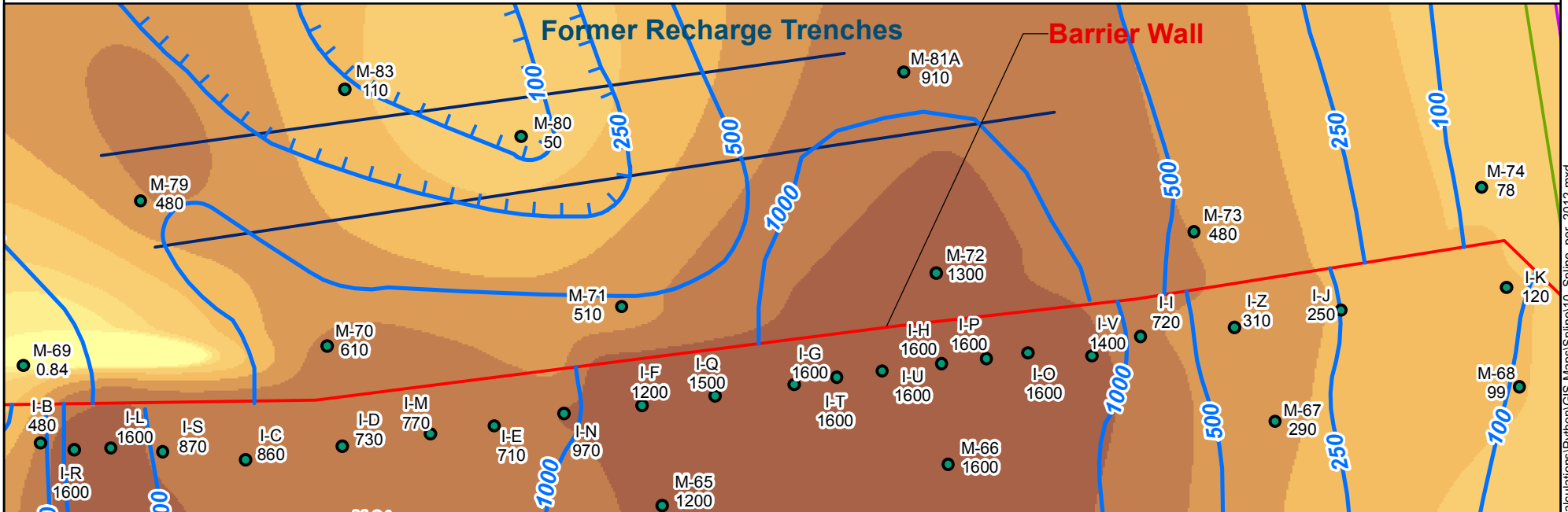
Inset C



Inset B



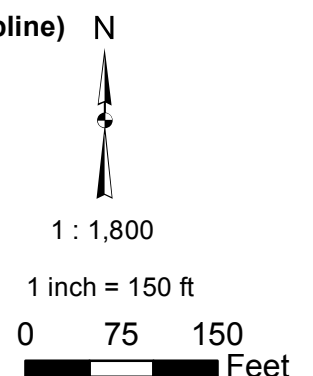
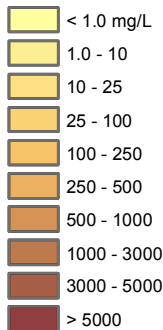
Inset A



LEGEND

- Shallow Water Bearing Zone Well (used in Contouring)
- - - Perchlorate Iso-concentration Line (mg/L) (Dashed where approximate)
- 1700 Perchlorate Concentration (mg/L)
- ▭ Plume Mass Estimation Boundary

Perchlorate Interpolated Concentrations for 2012 (Spline)



Grid: State Plane, Nevada East, NAD83, Feet



2200 Powell St., Suite 700, Emeryville, CA 94608

Spline Interpolation of Groundwater Perchlorate (2012)
Nevada Environmental Response Trust Site, Henderson, Nevada

Drafter: EA

Date: 8/29/2013

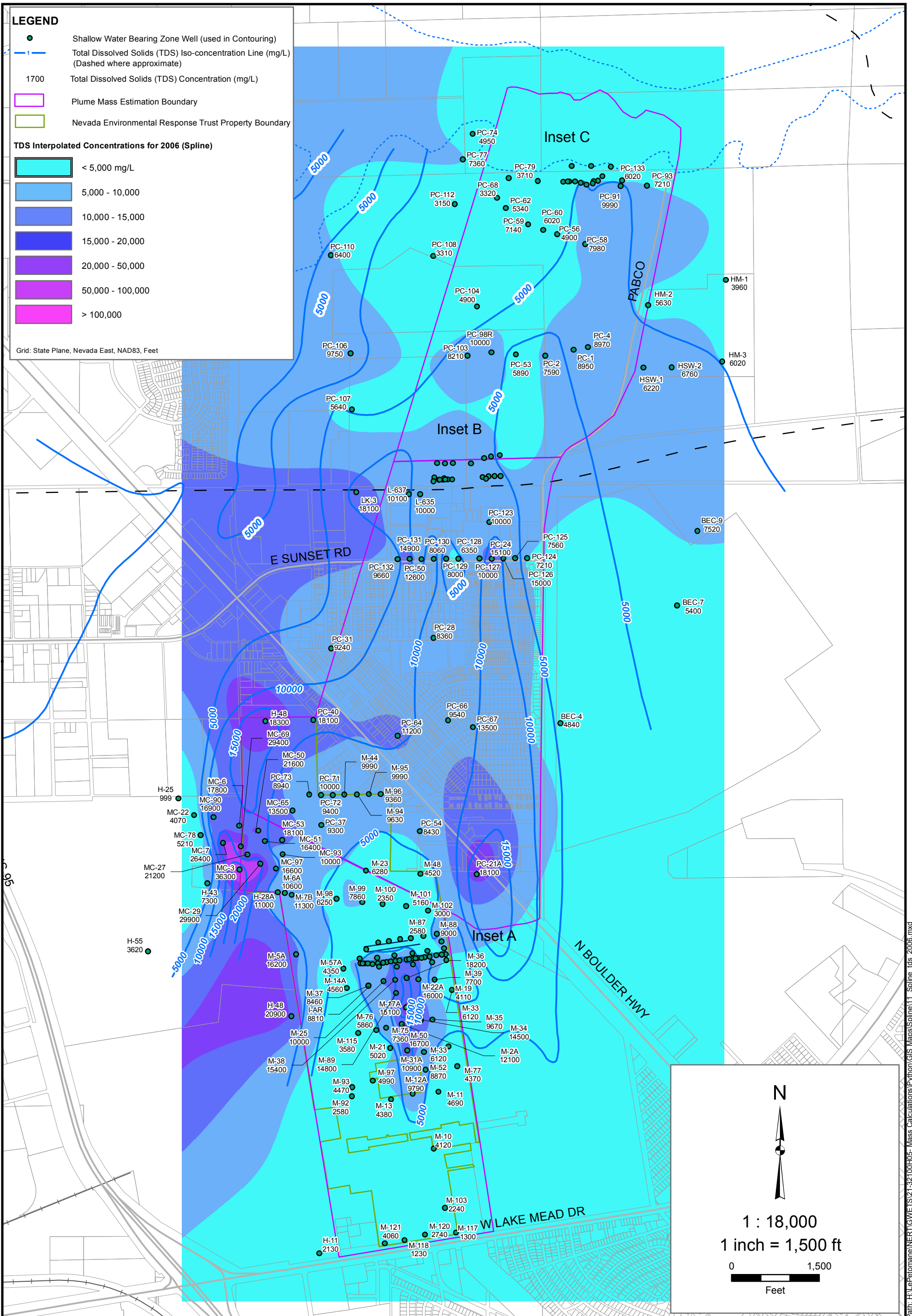
Contract Number: 21-32100H05

Approved by:

Revised:

Figure
2-5b

Path: H:\LePetomane\NERT\GWE\TS21-32100H05 - Mass Calculations\Python\GIS Maps\Spline\10_Spline_per_2012.mxd



Path: H:\Perfomance\NERT\GIS\21-32100H05 - Mass Calculators\Python\GIS Maps\Spline11_Spline_tds_2006.mxd



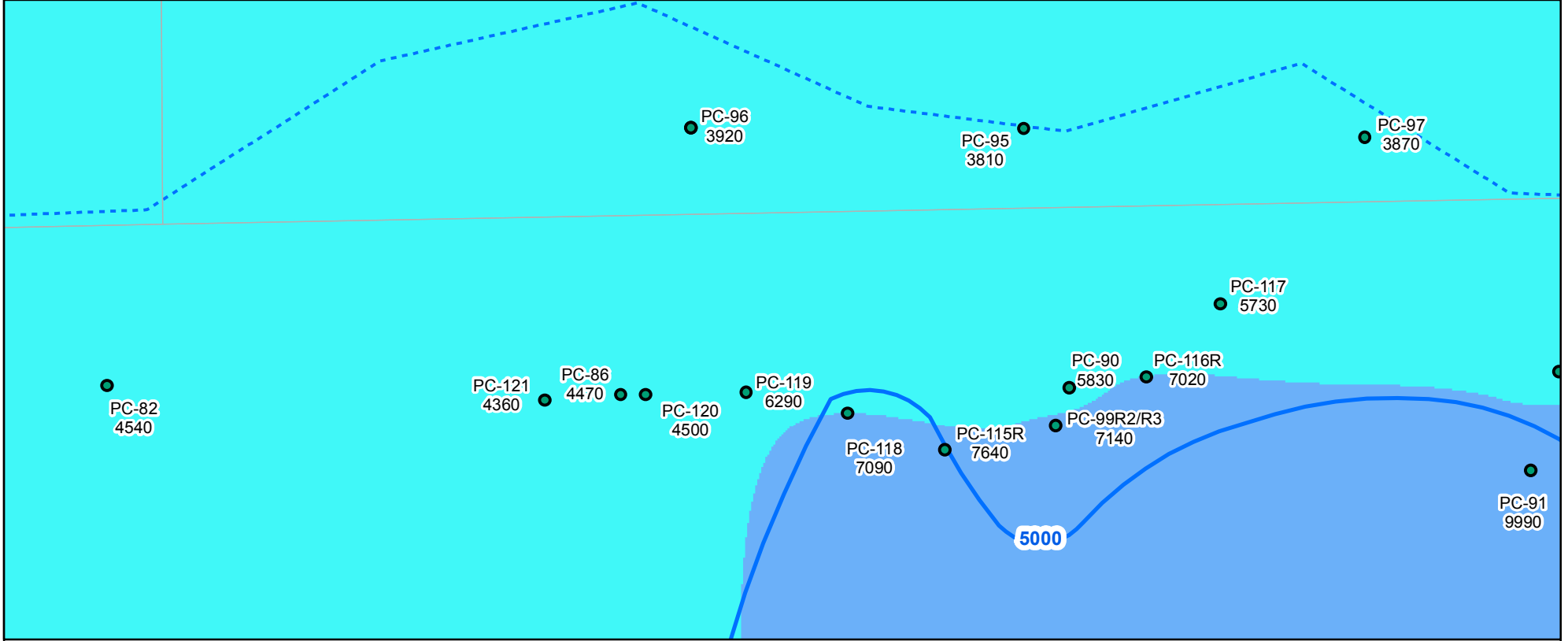
2200 Powell St., Suite 700, Emeryville, CA 94608

Spline Interpolation of Groundwater TDS (2006)
Nevada Environmental Response Trust Site, Henderson, Nevada

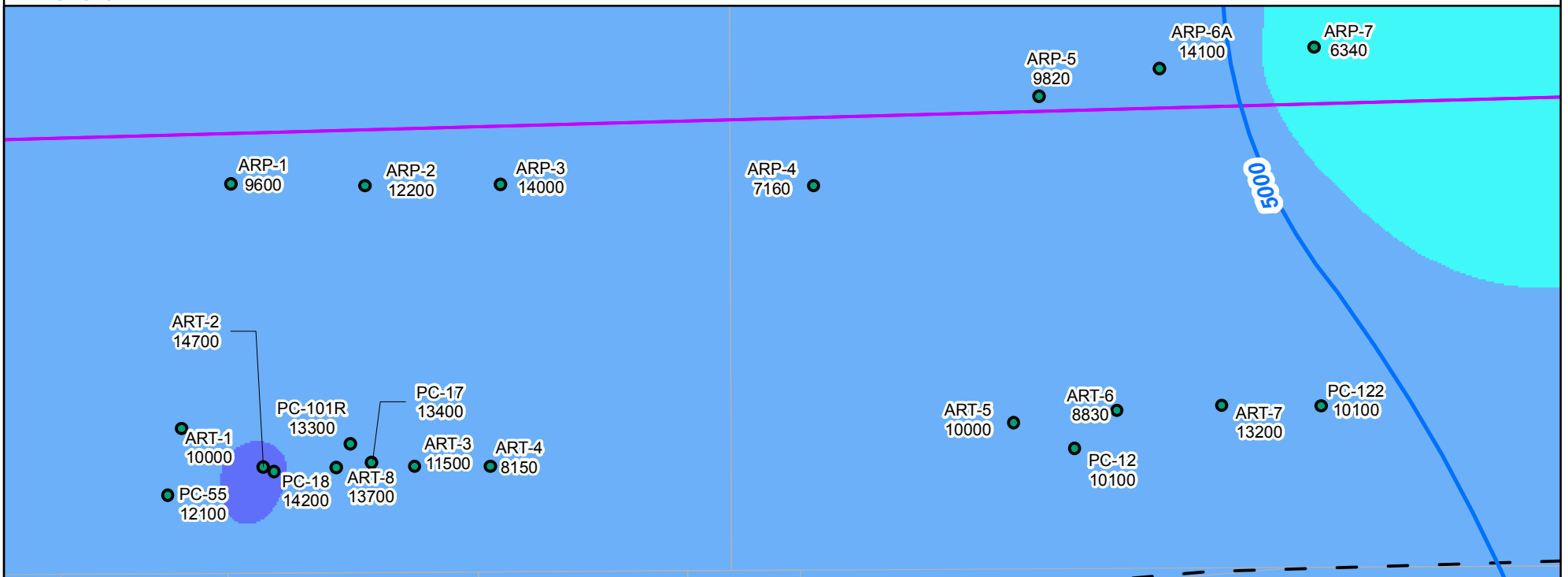
Drafter: EA Date: 8/29/2013 Contract Number: 21-32100H05 Approved by: Revised:

Figure
2-6a

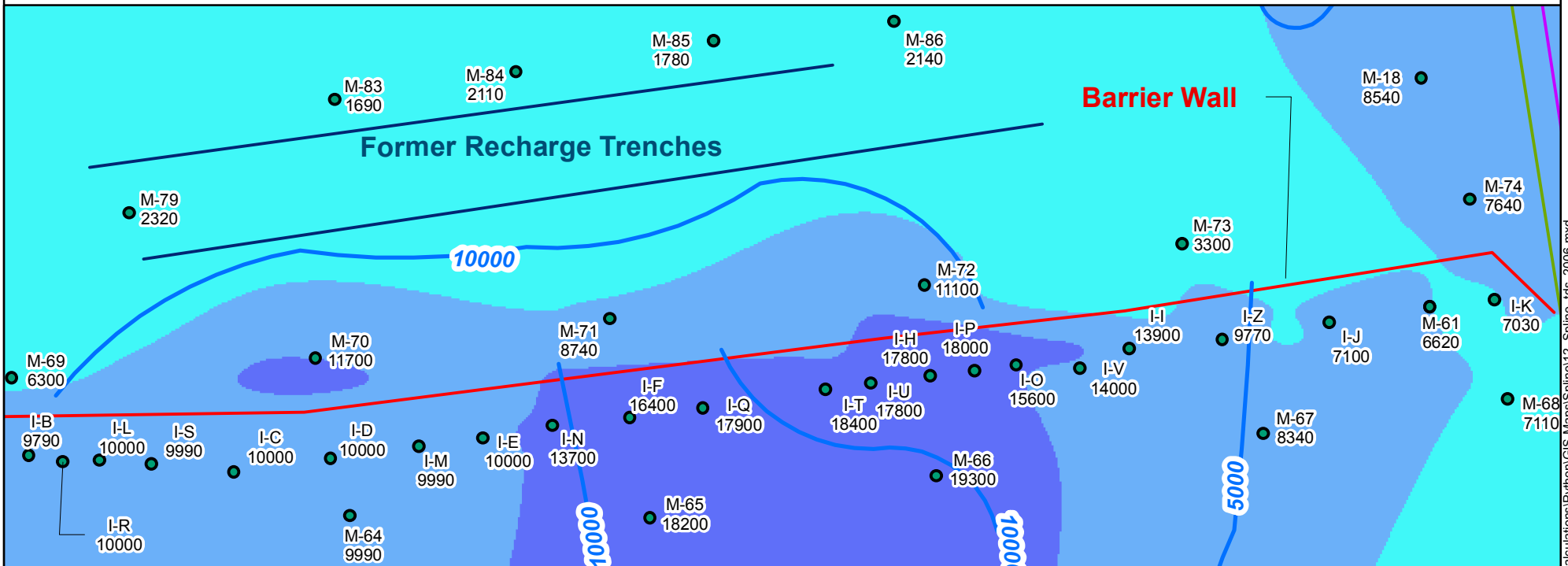
Inset C



Inset B



Inset A



LEGEND

- Shallow Water Bearing Zone Well (used in Contouring)
- 1- Total Dissolved Solids (TDS) Iso-concentration Line (mg/L) (Dashed where approximate)
- 1700 Total Dissolved Solids (TDS) Concentration (mg/L)
- Plume Mass Estimation Boundary

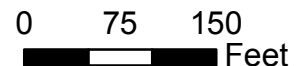
TDS Interpolated Concentrations for 2006 (Spline)

< 5,000 mg/L
5,000 - 10,000
10,000 - 15,000
15,000 - 20,000
20,000 - 50,000
50,000 - 100,000
> 100,000



1 : 1,800

1 inch = 150 ft



Grid: State Plane, Nevada East, NAD83, Feet



2200 Powell St., Suite 700, Emeryville, CA 94608

Spline Interpolation of Groundwater TDS (2006)

Nevada Environmental Response Trust Site, Henderson, Nevada

Figure

2-6b

Drafter: EA

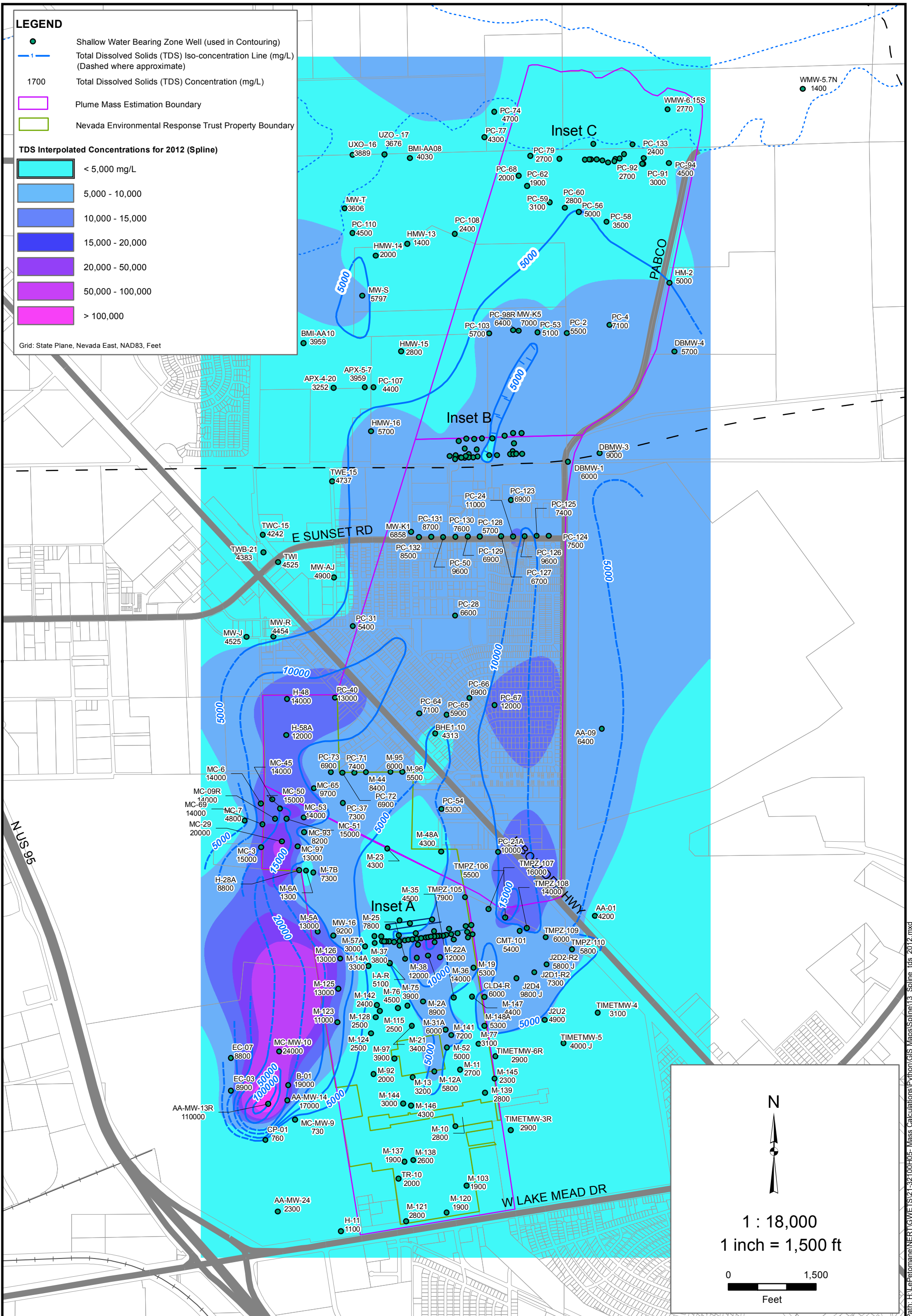
Date: 8/29/2013

Contract Number: 21-32100H05

Approved by:

Revised:

Path: H:\LePetomane\NERT\GWE\TS21-32100H05-Mass Calculations\Python\GIS Maps\Spline\12_Spline_106_2006.mxd



Spline Interpolation of Groundwater TDS (2012)
Nevada Environmental Response Trust Site, Henderson, Nevada

Figure
2-7a



2200 Powell St., Suite 700, Emeryville, CA 94608

Drafter: EA

Date: 8/29/2013

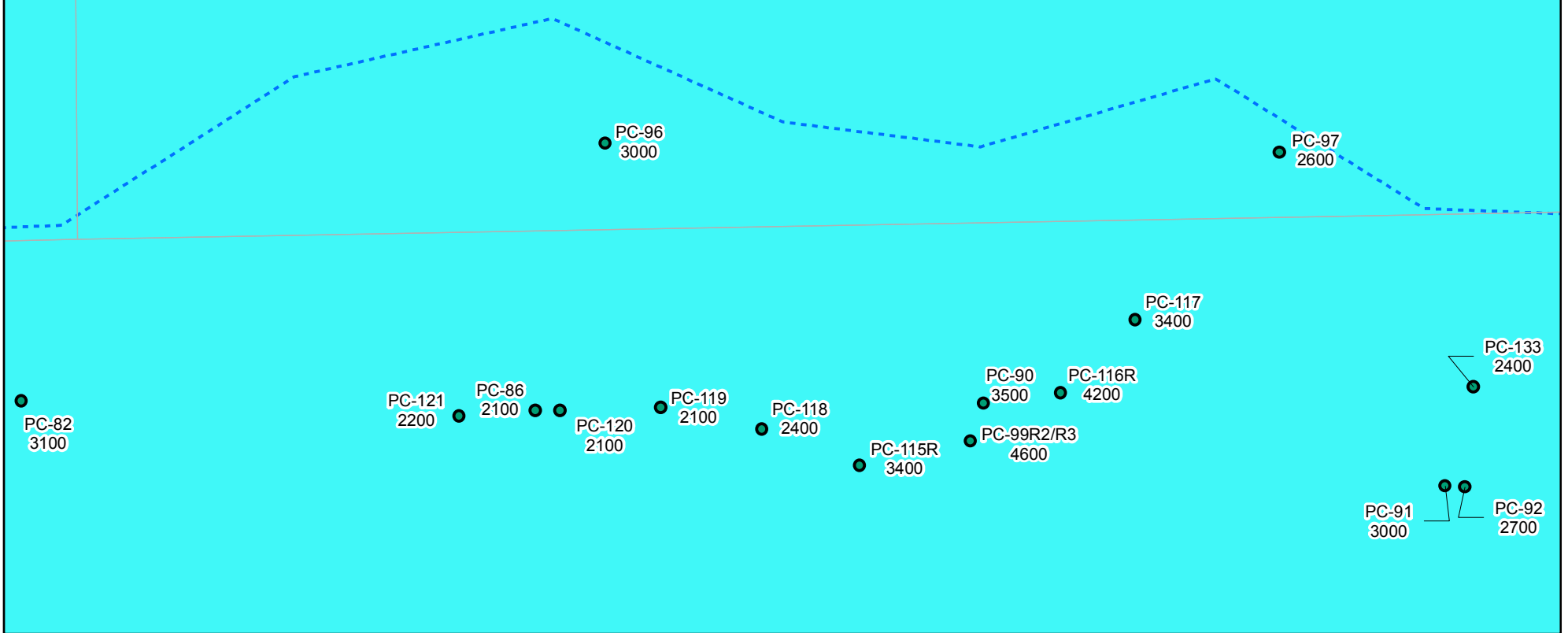
Contract Number: 21-32100H05

Approved by:

Revised:

Path: H:\Perfomance\NERT\GIS\21-32100H05 - Mass Calculations\Python\GIS Maps\Spline13_Spline_tds_2012.mxd

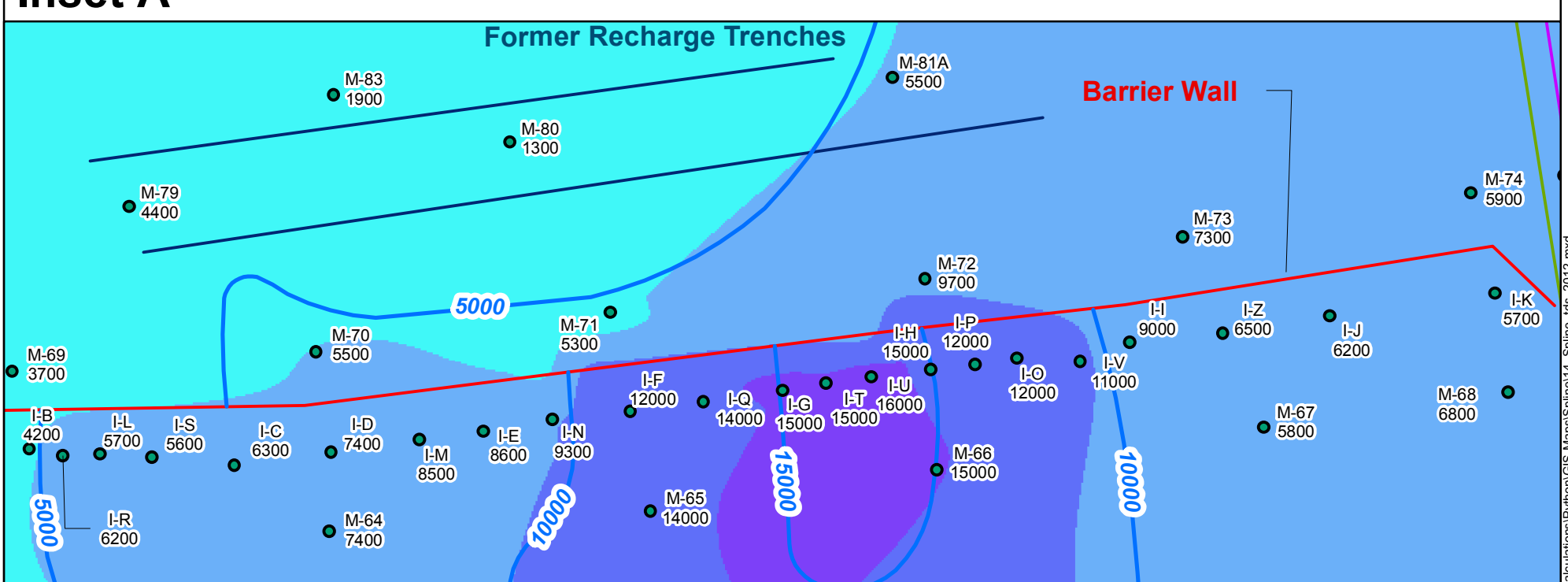
Inset C



Inset B



Inset A



LEGEND

- Shallow Water Bearing Zone Well (used in Contouring)
- - - Total Dissolved Solids (TDS) Iso-concentration Line (mg/L) (Dashed where approximate)
- 1700 Total Dissolved Solids (TDS) Concentration (mg/L)
- Plume Mass Estimation Boundary

TDS Interpolated Concentrations for 2012 (Spline)

	< 5,000 mg/L
	5,000 - 10,000
	10,000 - 15,000
	15,000 - 20,000
	20,000 - 50,000
	50,000 - 100,000
	> 100,000

Grid: State Plane, Nevada East, NAD83, Feet

Scale: 1 : 1,800
1 inch = 150 ft
0 75 150 Feet

North Arrow

Path: H:\LePetomane\NERT\GWE\TS21-32100H05 - Mass Calculations\Python\GIS Maps\Spline\14_Spline_02_2012.mxd