

2200 Powell St., Suite 700, Emeryville, CA 94608

**Kriging Interpolation of Groundwater Chromium (2006)**  
 Nevada Environmental Response Trust Site, Henderson, Nevada

Drafter: EA

Date: 8/29/2013

Contract Number: 21-32100H05

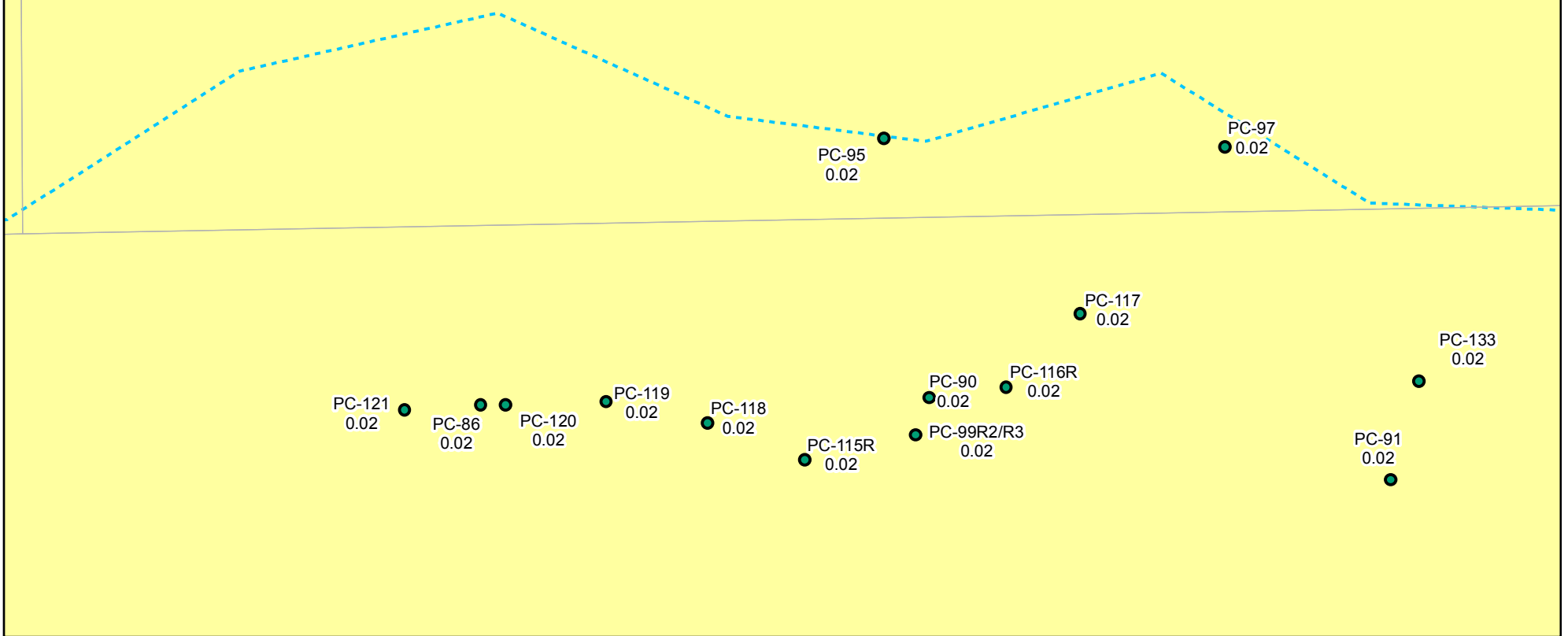
Approved by:

Revised:

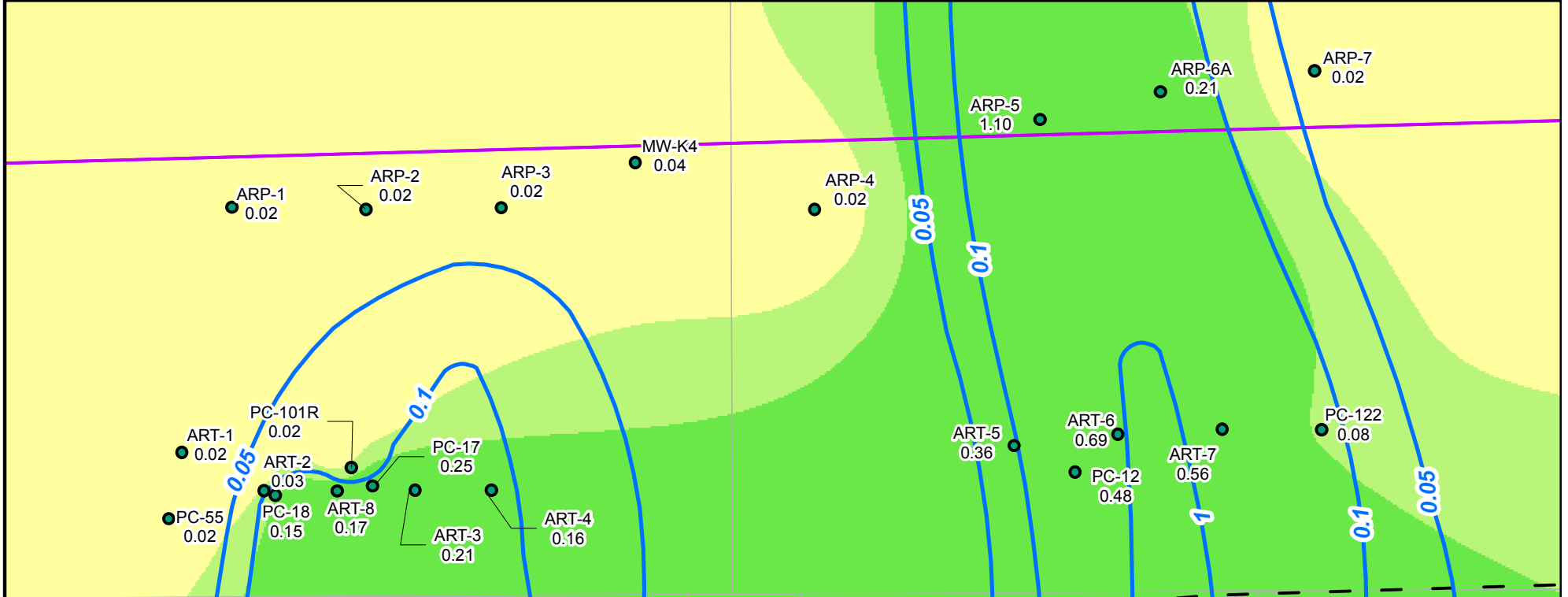
Figure  
**1-1a**

Path: H:\LePetomane\NERT\GWS\21-32100H05 - Mass Calculations\Python\GIS Maps\Kriging1\_Kriging\_cr\_2006.mxd

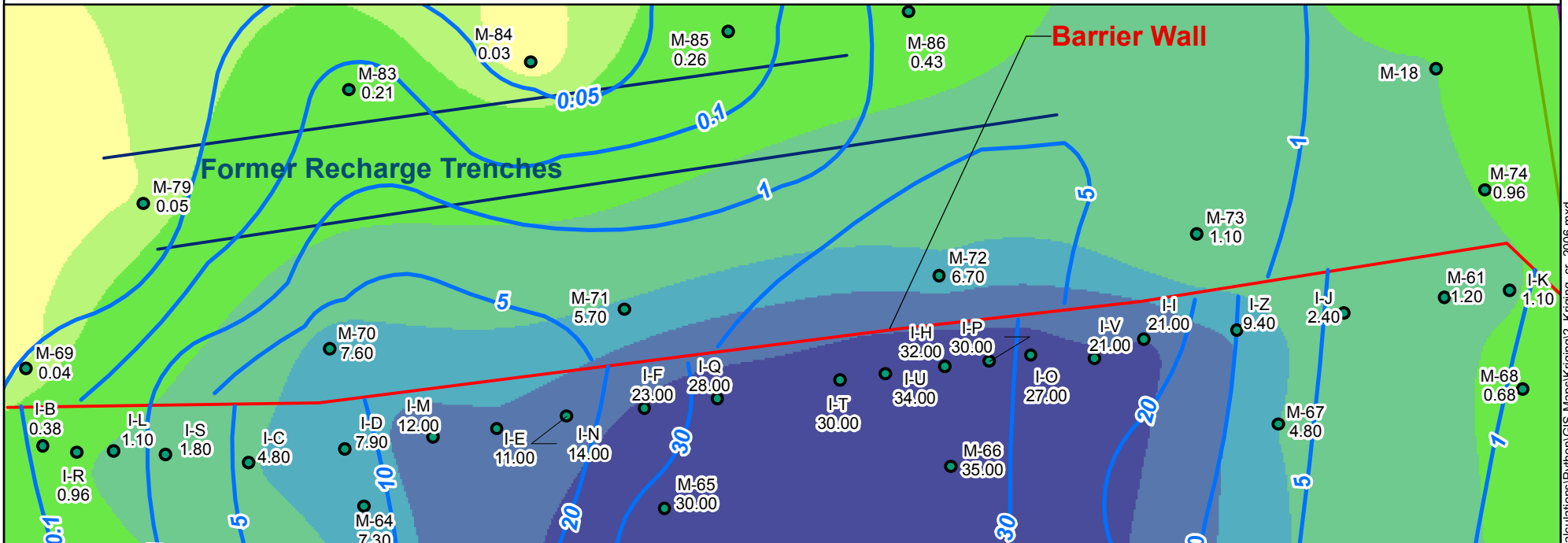
# Inset C



# Inset B



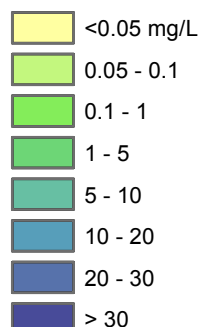
# Inset A



## LEGEND

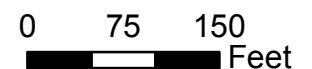
- Shallow Water Bearing Zone Well (used in Contouring)
- - - Total Chromium Iso-concentration Line (mg/L) (Dashed where approximate)
- 1700 Total Chromium Concentration (mg/L)
- ▭ Plume Mass Estimation Boundary

## Chromium Interpolated Concentrations for 2006 (Kriging)



1 : 1,800

1 inch = 150 ft



Grid: State Plane, Nevada East, NAD83, Feet

**Kriging Interpolation of Groundwater Chromium (2006)**  
Nevada Environmental Response Trust Site, Henderson, Nevada

Figure  
**1-1b**



2200 Powell St., Suite 700, Emeryville, CA 94608

Drafter: EA

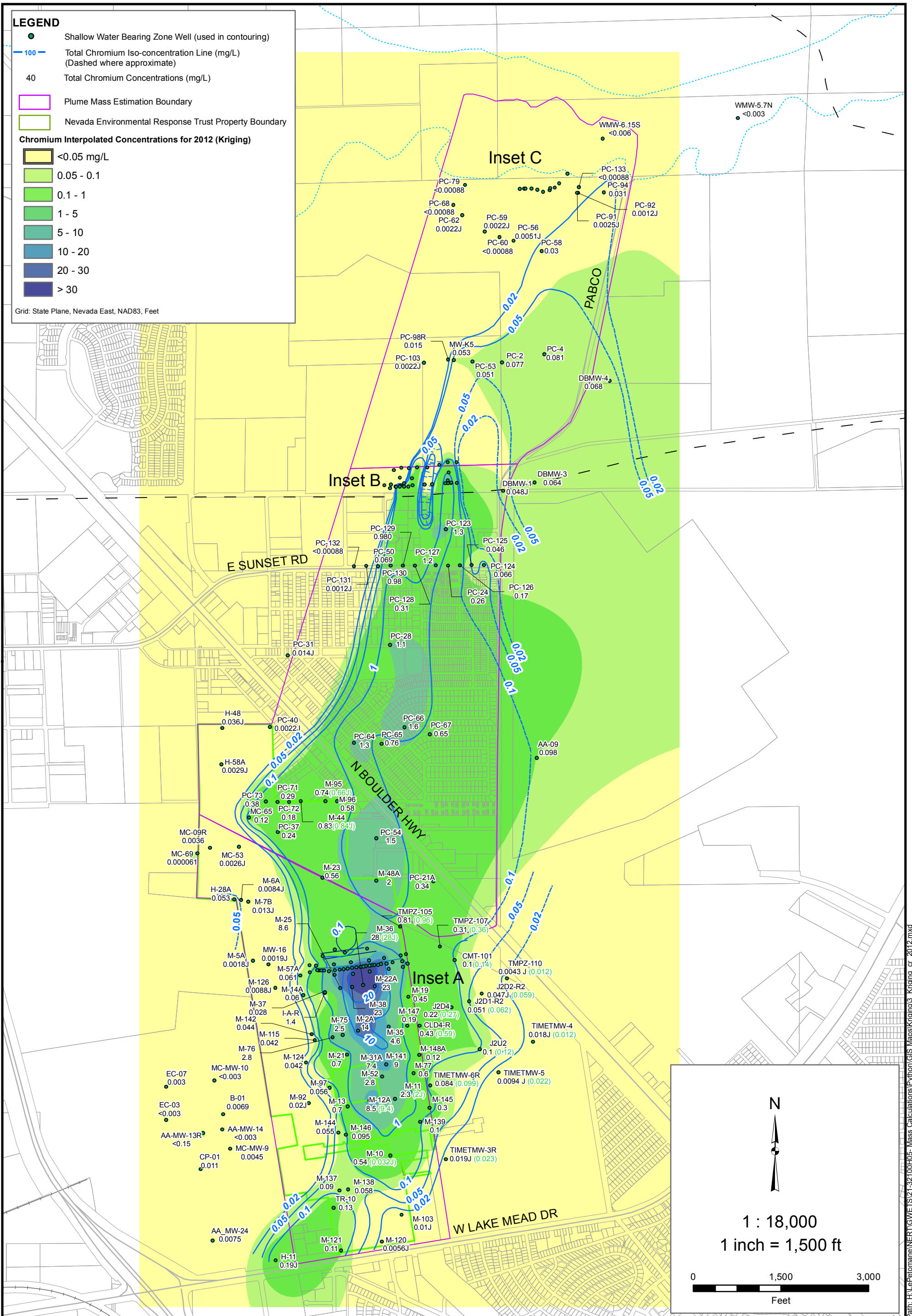
Date: 8/29/2013

Contract Number: 21-32100H05

Approved by:

Revised:

Path: H:\LePetomane\NERT\GIS\Maps\Kriging2\_Kriging\_cr\_2006.mxd



2200 Powell St., Suite 700, Emeryville, CA 94608

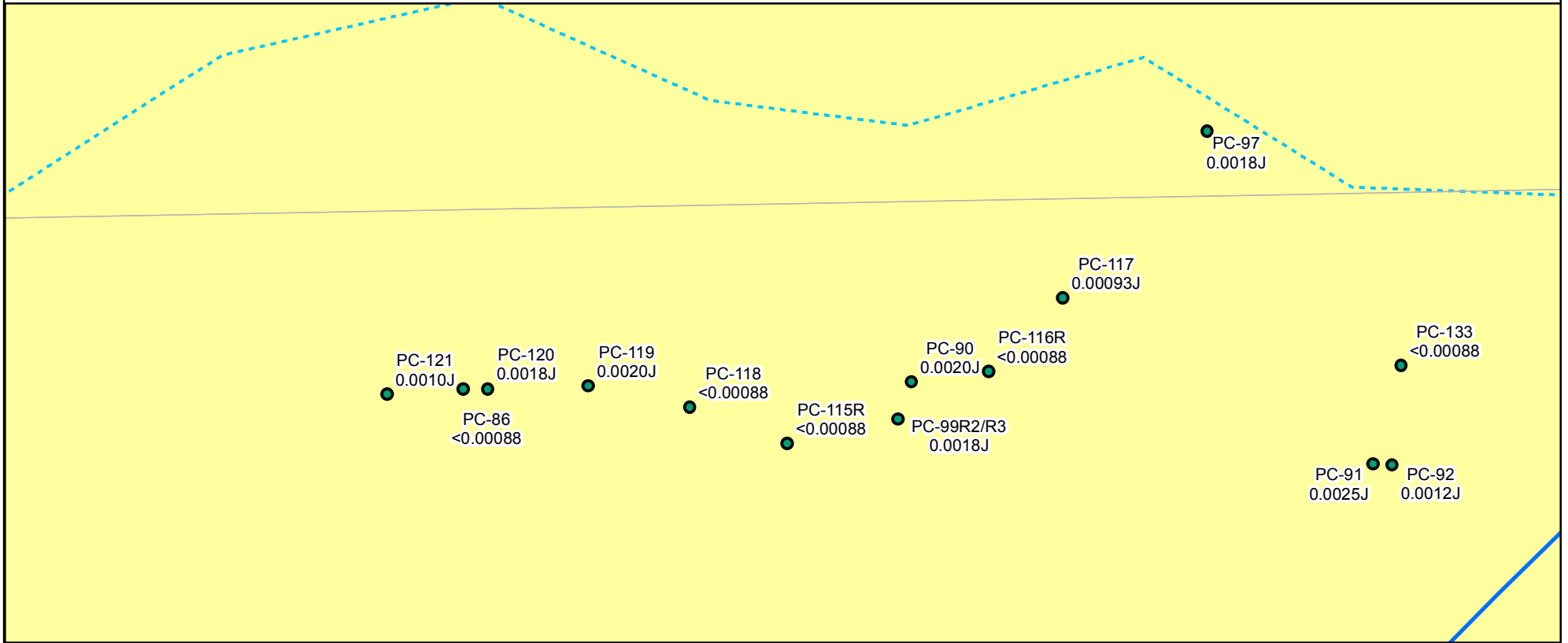
**Kriging Interpolation of Groundwater Chromium (2012)**  
Nevada Environmental Response Trust Site, Henderson, Nevada

Drafter: EA      Date: 8/29/2013      Contract Number: 21-32100H05      Approved by:      Revised:

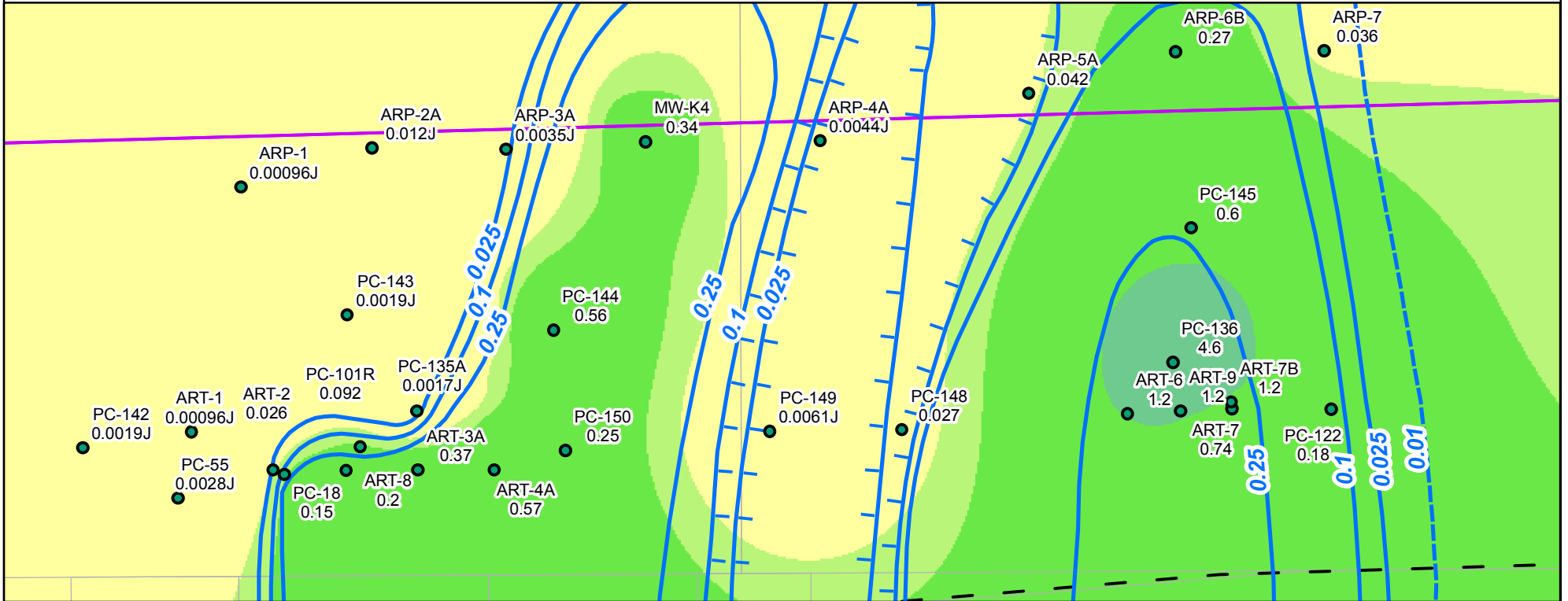
Figure  
**1-2a**

Path: H:\Perfomance\NERT\GIS\21-32100H05-Mass Calculators\Python\GIS Maps\Kriging3\_Kriging\_cr\_2012.mxd

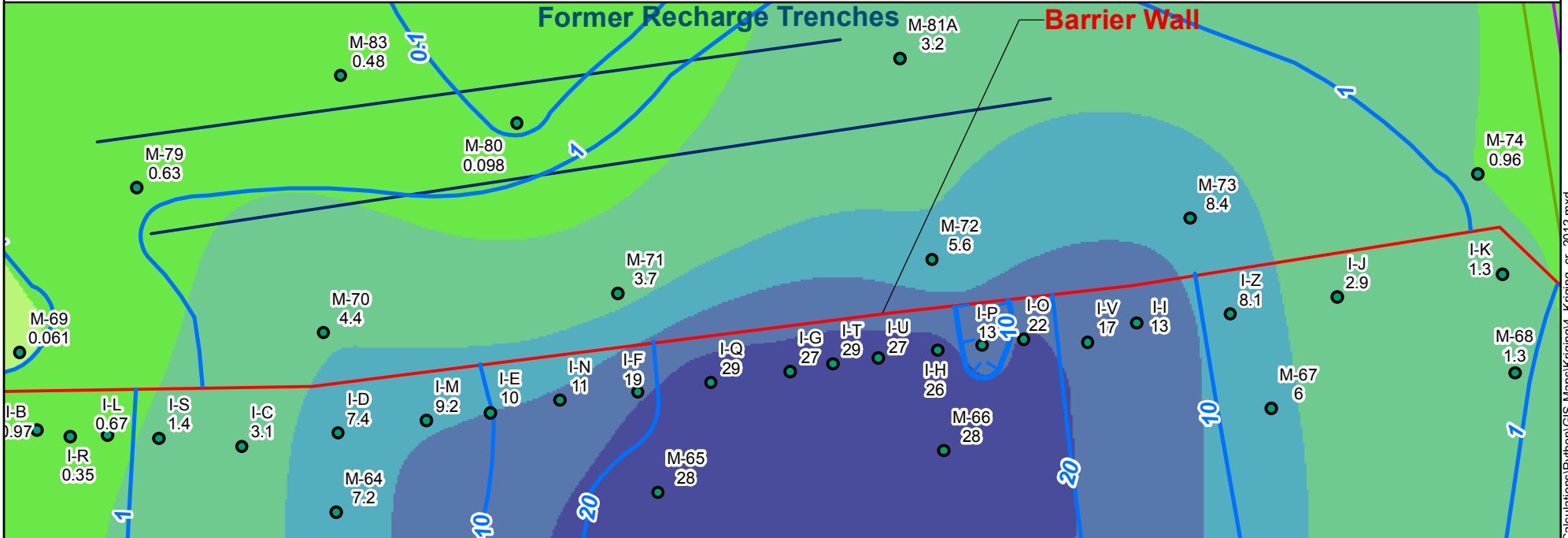
# Inset C



# Inset B



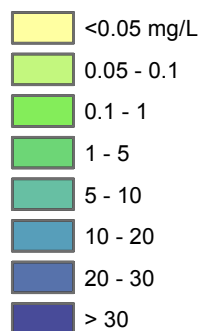
# Inset A



## LEGEND

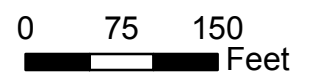
- Shallow Water Bearing Zone Well (used in Contouring)
- 1- Perchlorate Iso-concentration Line (mg/L) (Dashed where approximate)
- 1700 Total Chromium Concentration (mg/L)
- ▭ Plume Mass Estimation Boundary

## Chromium Interpolated Concentrations for 2012 (Kriging)



1:1,800

1 inch = 150 ft



Grid: State Plane, Nevada East, NAD83, Feet



2200 Powell St., Suite 700, Emeryville, CA 94608

**Kriging Interpolation of Groundwater Chromium (2012)**  
Nevada Environmental Response Trust Site, Henderson, Nevada

Drafter: EA

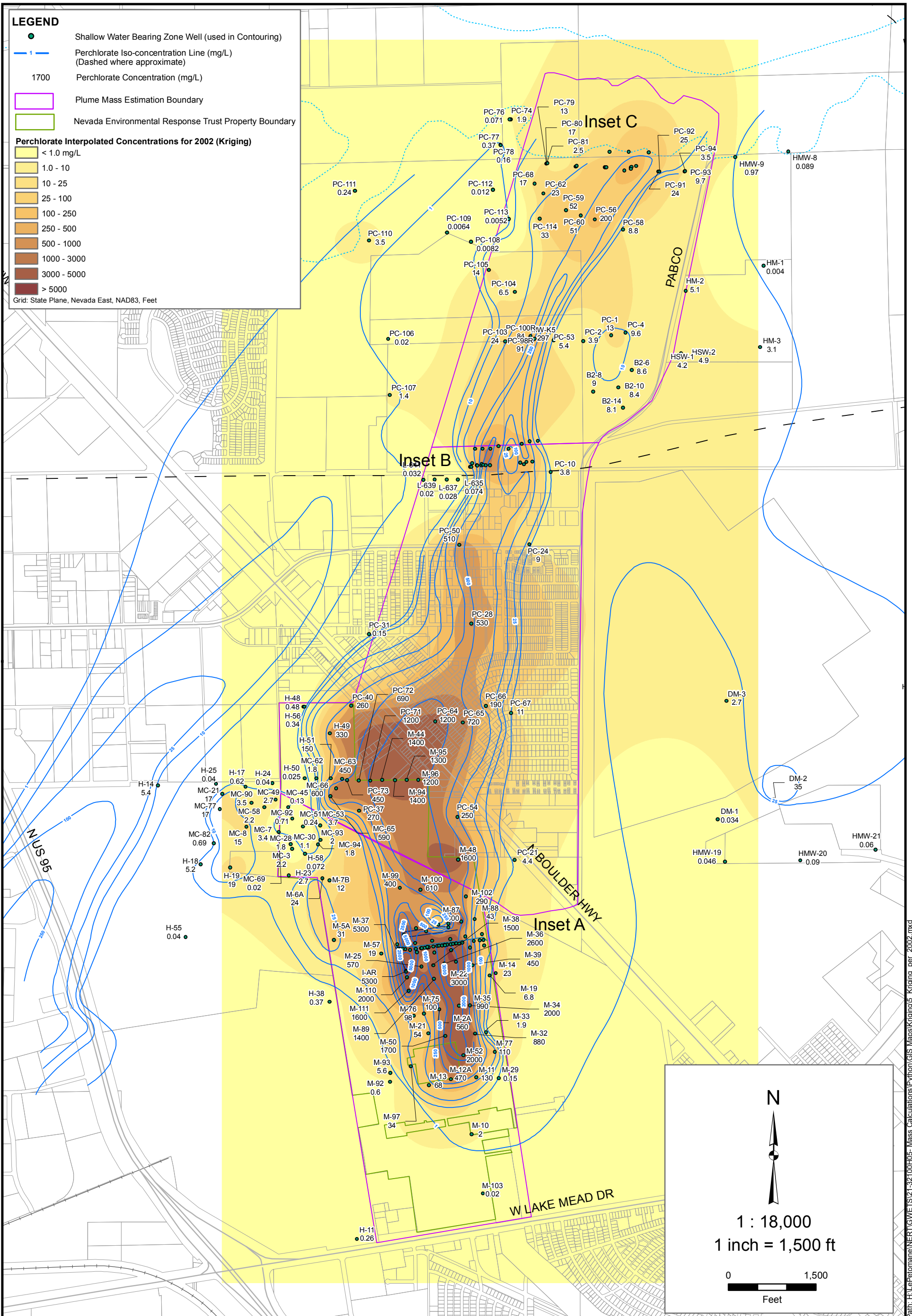
Date: 8/29/2013

Contract Number: 21-32100H05

Approved by:

Revised:

Figure  
**1-2b**



Path: H:\Perchlorate\NERT\GIS\21-32100H05 - Mass Calculations\Python\GIS Maps\Kriging\Kriging\_per\_2002.mxd



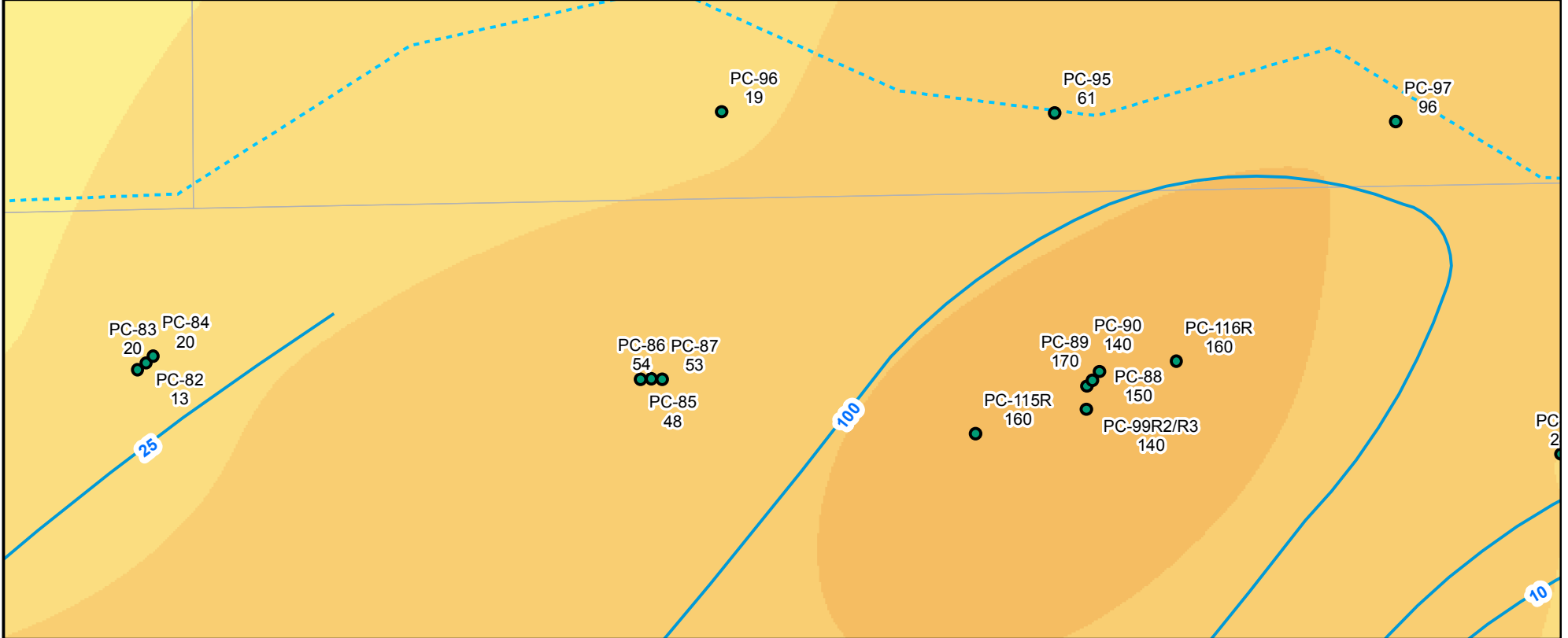
2200 Powell St., Suite 700, Emeryville, CA 94608

**Kriging Interpolation of Groundwater Perchlorate (2002)**  
Nevada Environmental Response Trust Site, Henderson, Nevada

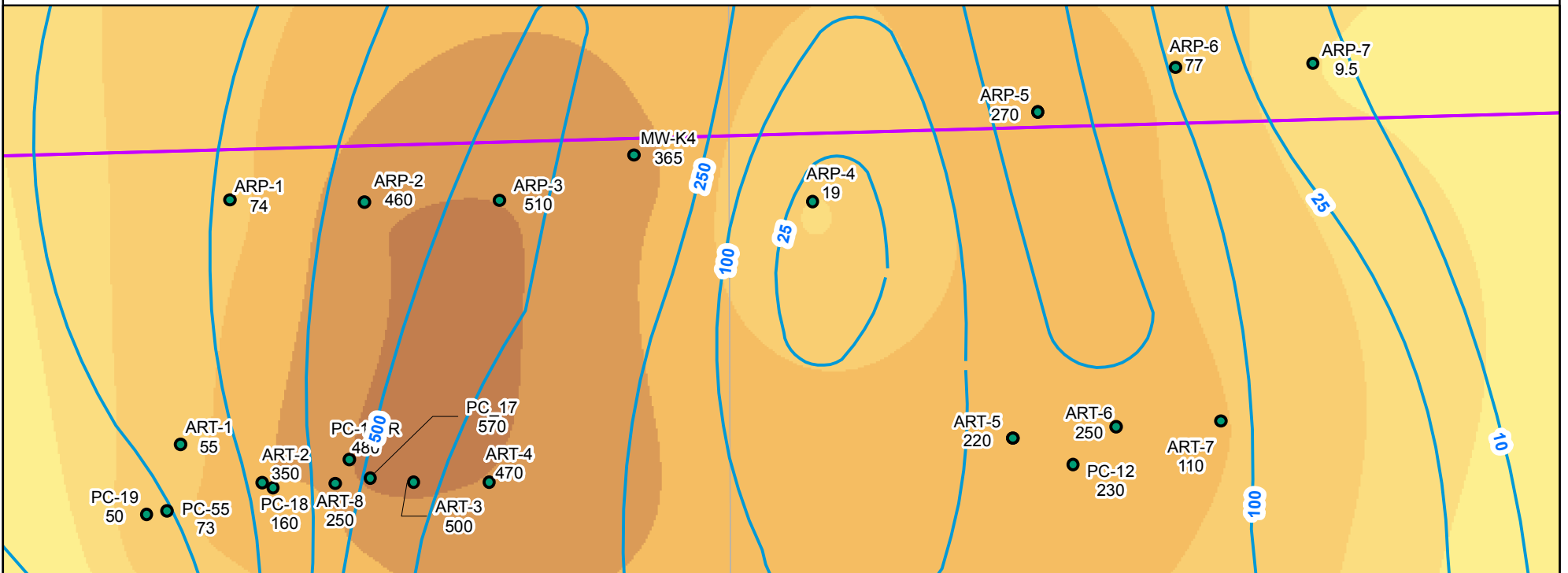
Drafter: EA      Date: 8/29/2013      Contract Number: 21-32100H05      Approved by:      Revised:

Figure  
**1-3a**

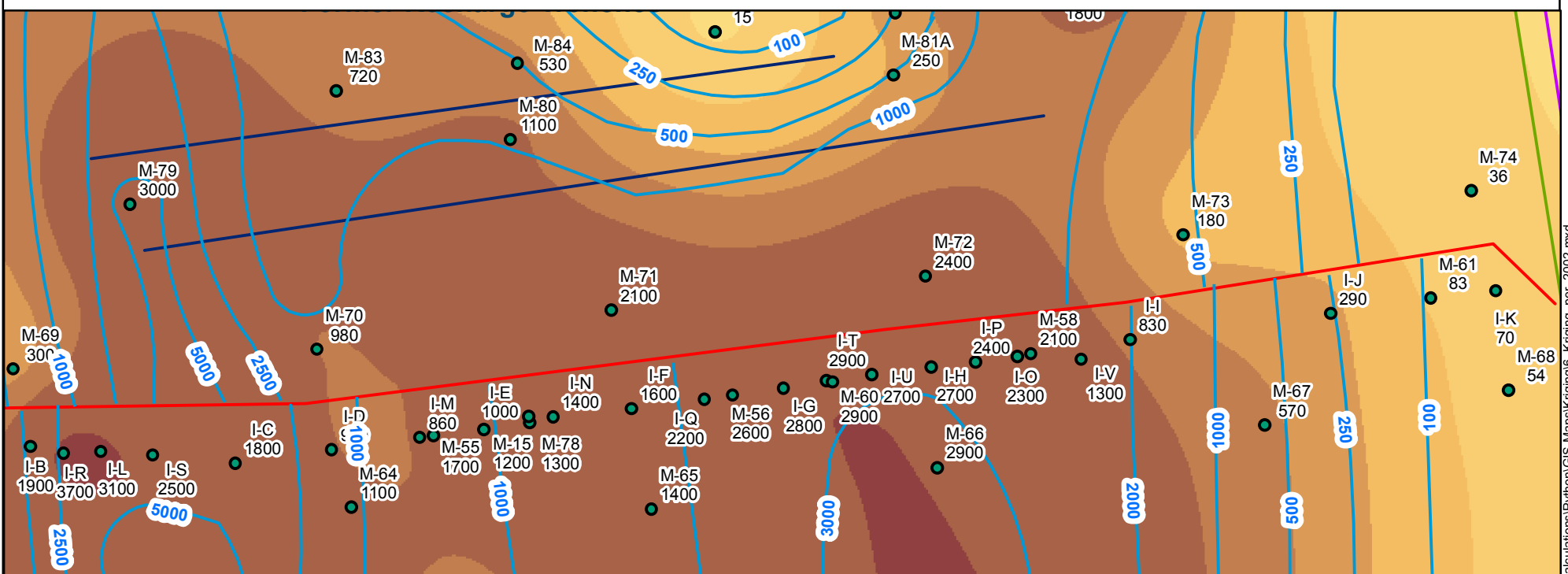
# Inset C



# Inset B



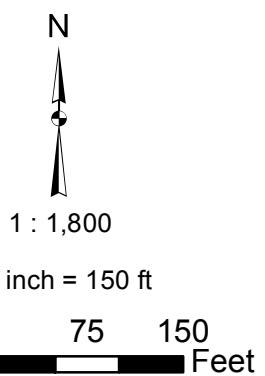
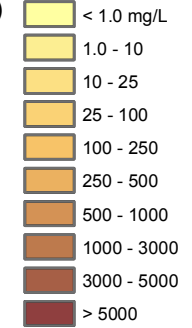
# Inset A



## LEGEND

- Shallow Water Bearing Zone Well (used in Contouring)
- - - Perchloration Iso-concentration Line (mg/L)  
(Dashed where approximate)
- 1700 Perchloration Concentration (mg/L)
- Plume Mass Estimation Boundary

## Perchloration Interpolated Concentrations for 2002 (Kriging)



Grid: State Plane, Nevada East, NAD83, Feet

### Kriging Interpolation of Groundwater Perchloration (2002) Nevada Environmental Response Trust Site, Henderson, Nevada

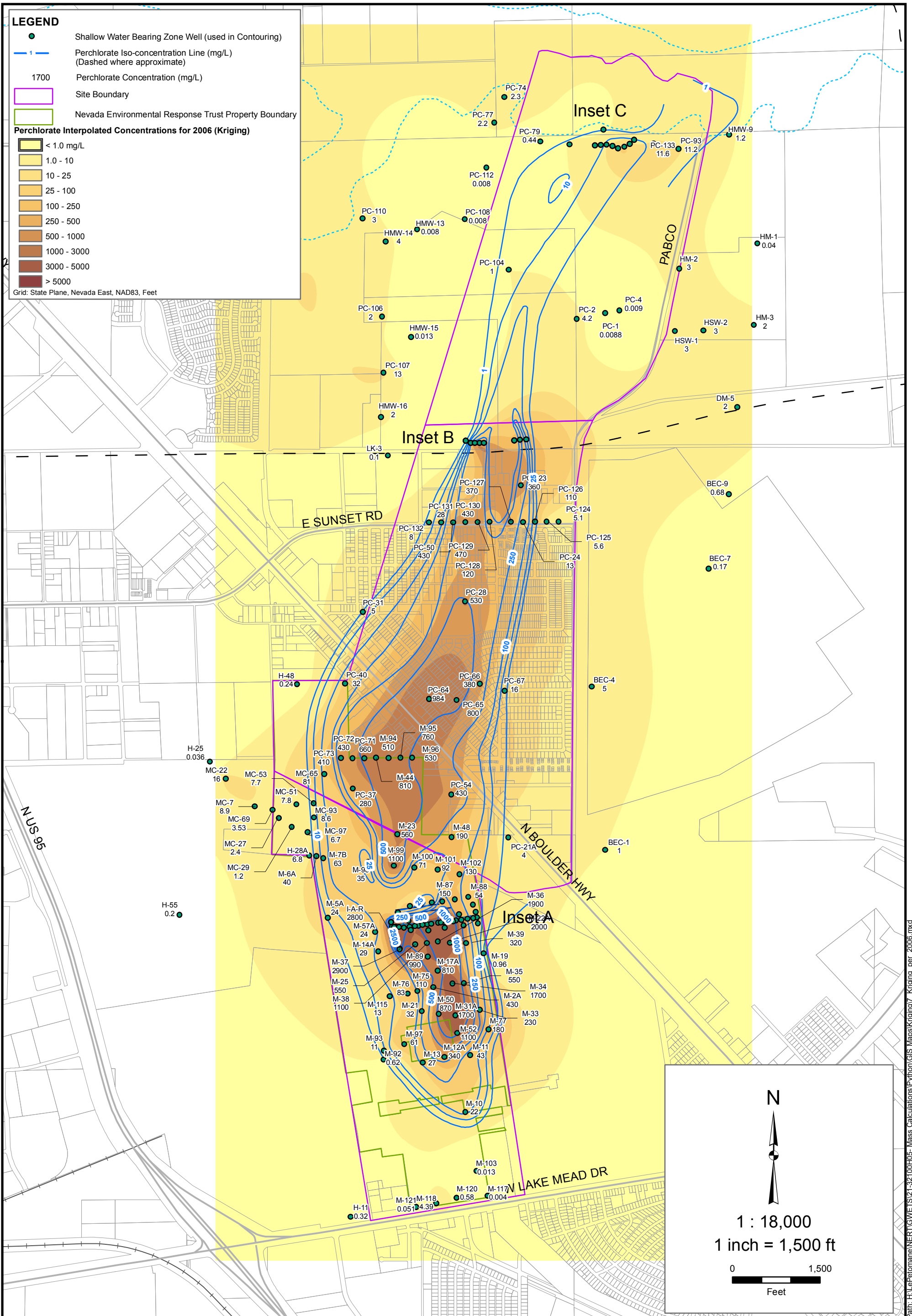
Figure  
**1-3b**



2200 Powell St., Suite 700, Emeryville, CA 94608

Drafter: EA      Date: 8/29/2013      Contract Number: 21-32100H05      Approved by:      Revised:

Path: H:\LePetomane\NERT\GIS\Map\Kriging6\_Kriging\_per\_2002.mxd



Path: H:\Perfomane\NERT\GIS\21-32100H05 - Mass Calculations\Python\GIS Maps\Kriging17\_Kriging\_per\_2006.mxd



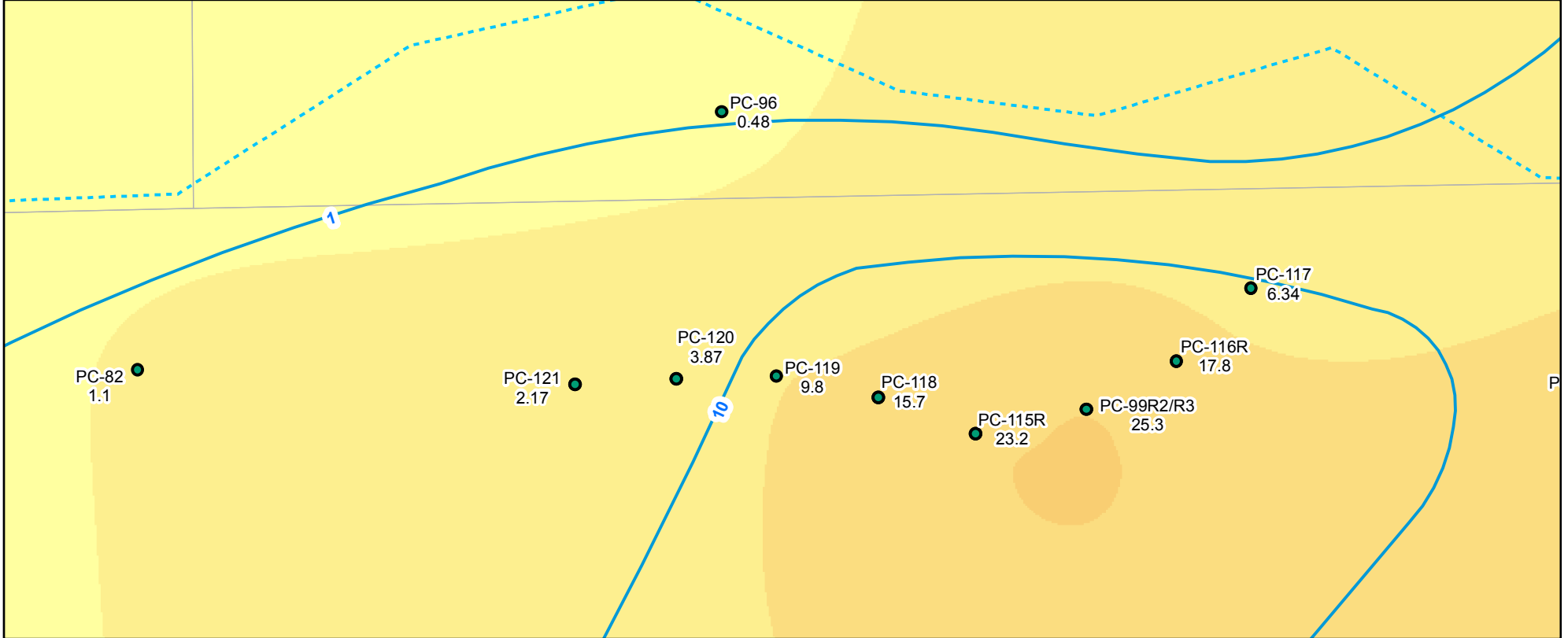
2200 Powell St., Suite 700, Emeryville, CA 94608

**Kriging Interpolation of Groundwater Perchlorate (2006)**  
 Nevada Environmental Response Trust Site, Henderson, Nevada

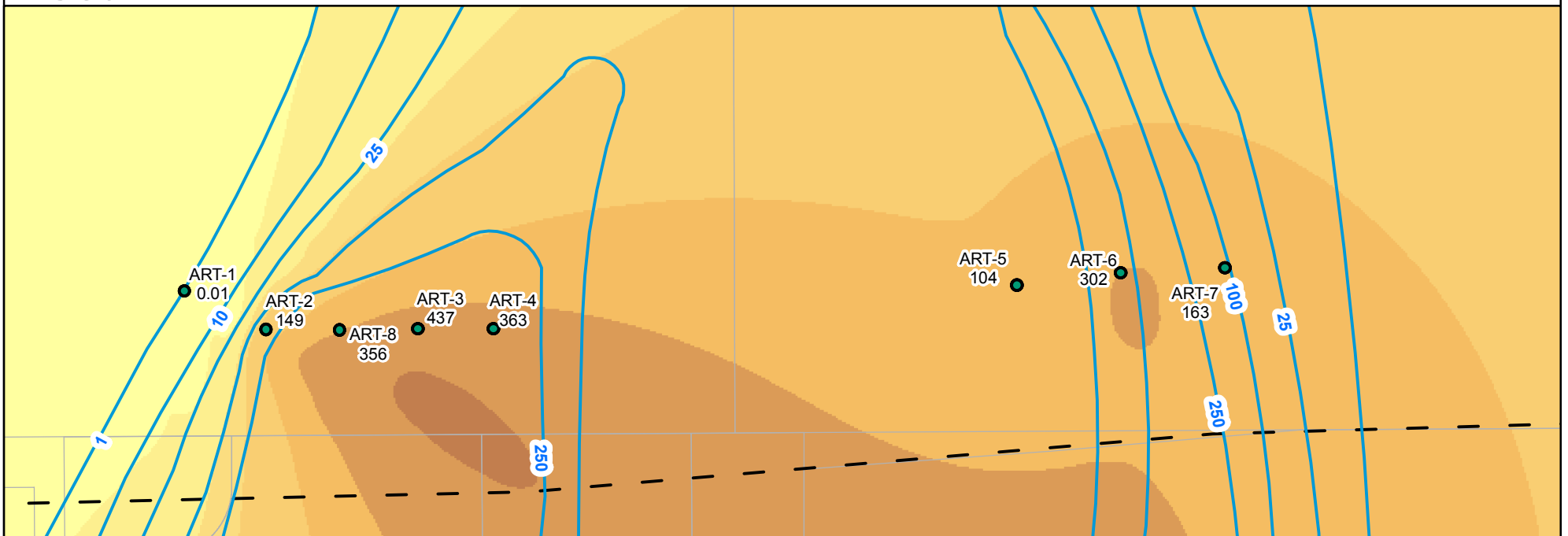
Drafter: EA      Date: 8/29/2013      Contract Number: 21-32100H05      Approved by:      Revised:

Figure  
**1-4a**

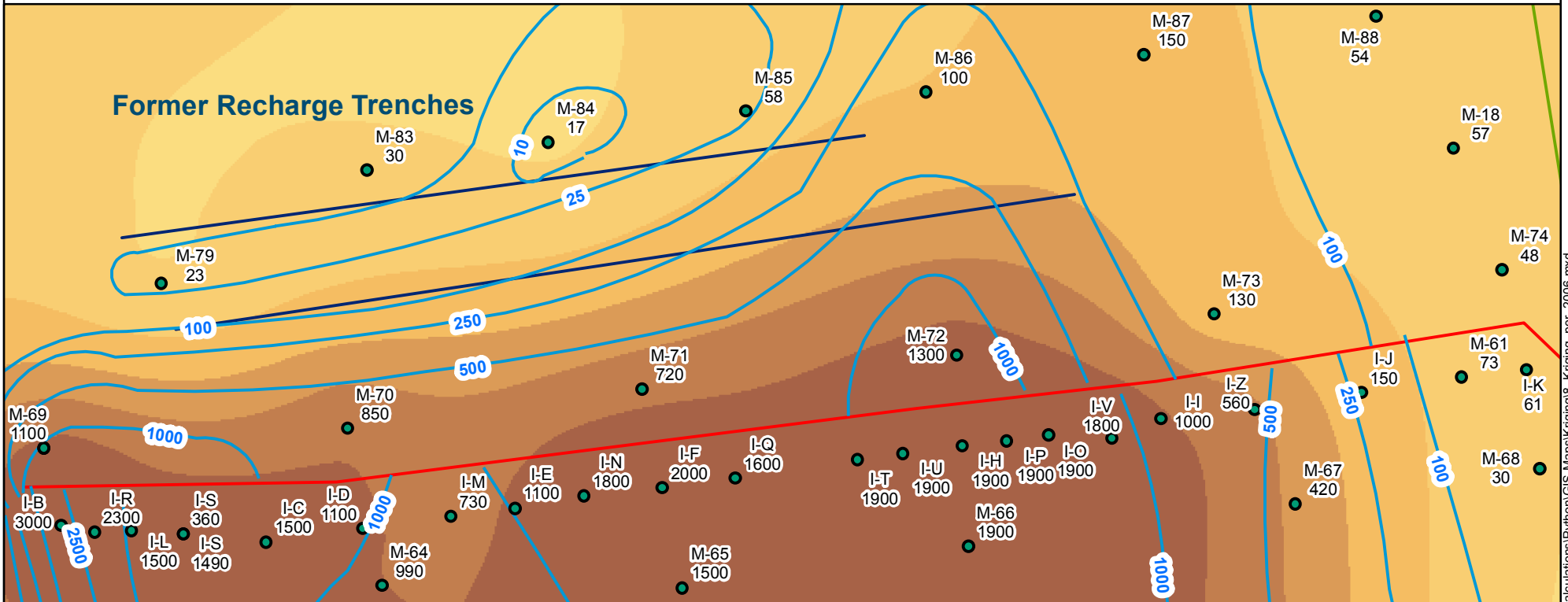
# Inset C



# Inset B



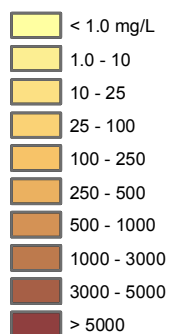
# Inset A



## LEGEND

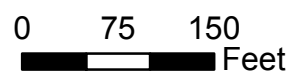
- Shallow Water Bearing Zone Well (used in Contouring)
- 1- Perchlorate Iso-concentration Line (mg/L) (Dashed where approximate)
- 1700 Perchlorate Concentration (mg/L)
- Plume Mass Estimation Boundary

## Perchlorate Interpolated Concentrations for 2006 (Kriging)



1 : 1,800

1 inch = 150 ft



Grid: State Plane, Nevada East, NAD83, Feet



2200 Powell St., Suite 700, Emeryville, CA 94608

**Kriging Interpolation of Groundwater Perchlorate (2006)**  
Nevada Environmental Response Trust Site, Henderson, Nevada

Drafter: EA

Date: 8/29/2013

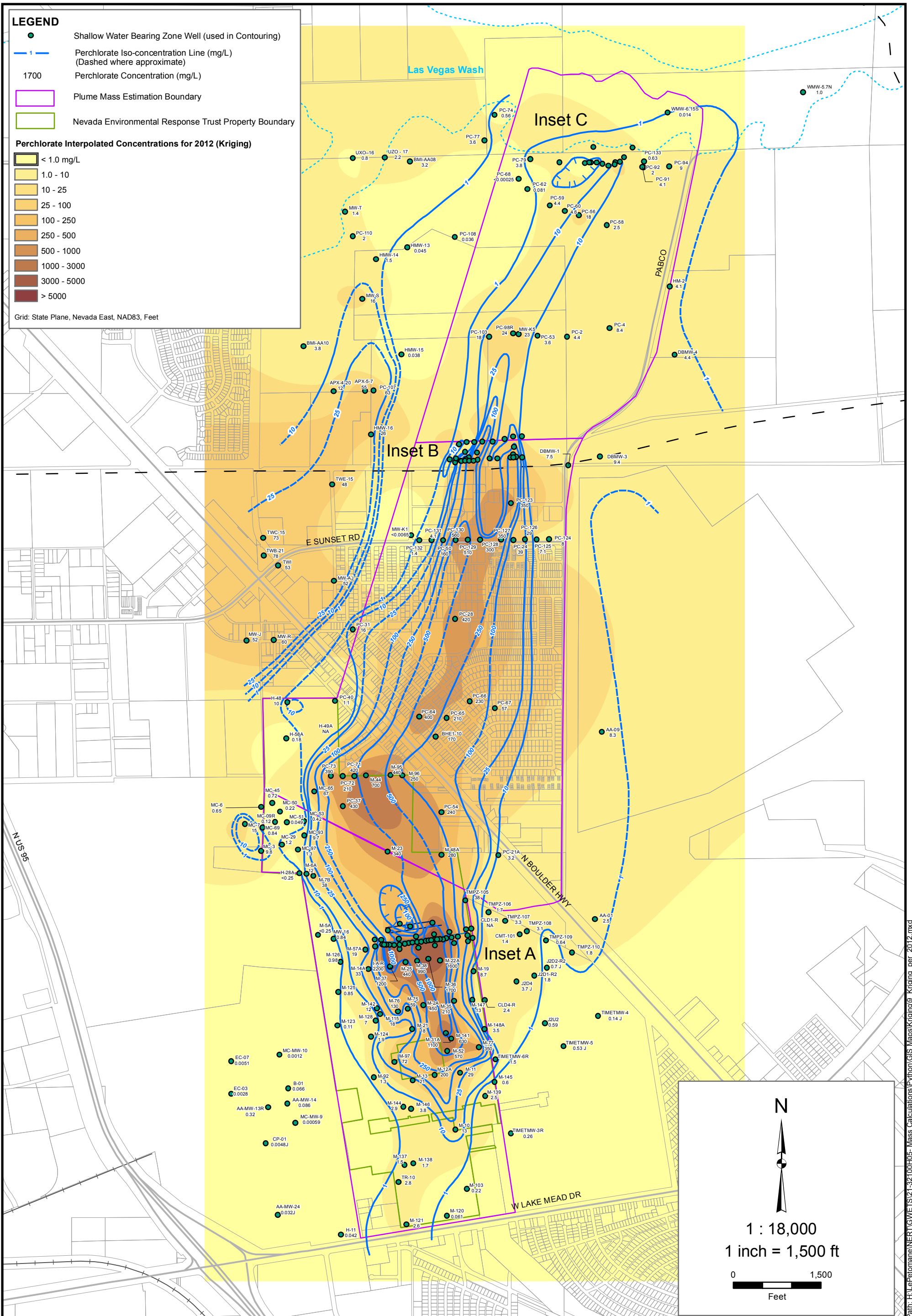
Contract Number: 21-32100H05

Approved by:

Revised:

Figure  
**1-4b**





**LEGEND**

- Shallow Water Bearing Zone Well (used in Contouring)
- Perchlorate Iso-concentration Line (mg/L) (Dashed where approximate)
- 1700 Perchlorate Concentration (mg/L)
- Plume Mass Estimation Boundary
- Nevada Environmental Response Trust Property Boundary

**Perchlorate Interpolated Concentrations for 2012 (Kriging)**

< 1.0 mg/L
1.0 - 10
10 - 25
25 - 100
100 - 250
250 - 500
500 - 1000
1000 - 3000
3000 - 5000
> 5000

Grid: State Plane, Nevada East, NAD83, Feet

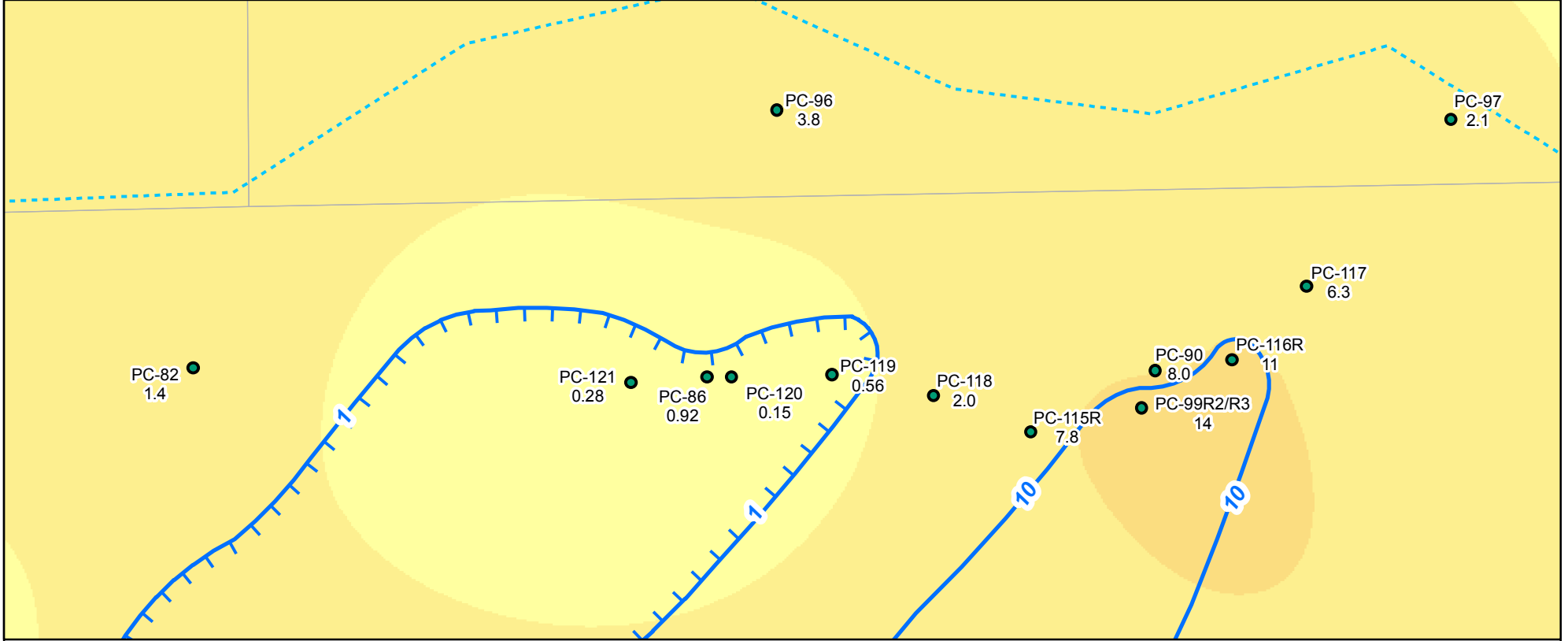
N

1 : 18,000  
1 inch = 1,500 ft

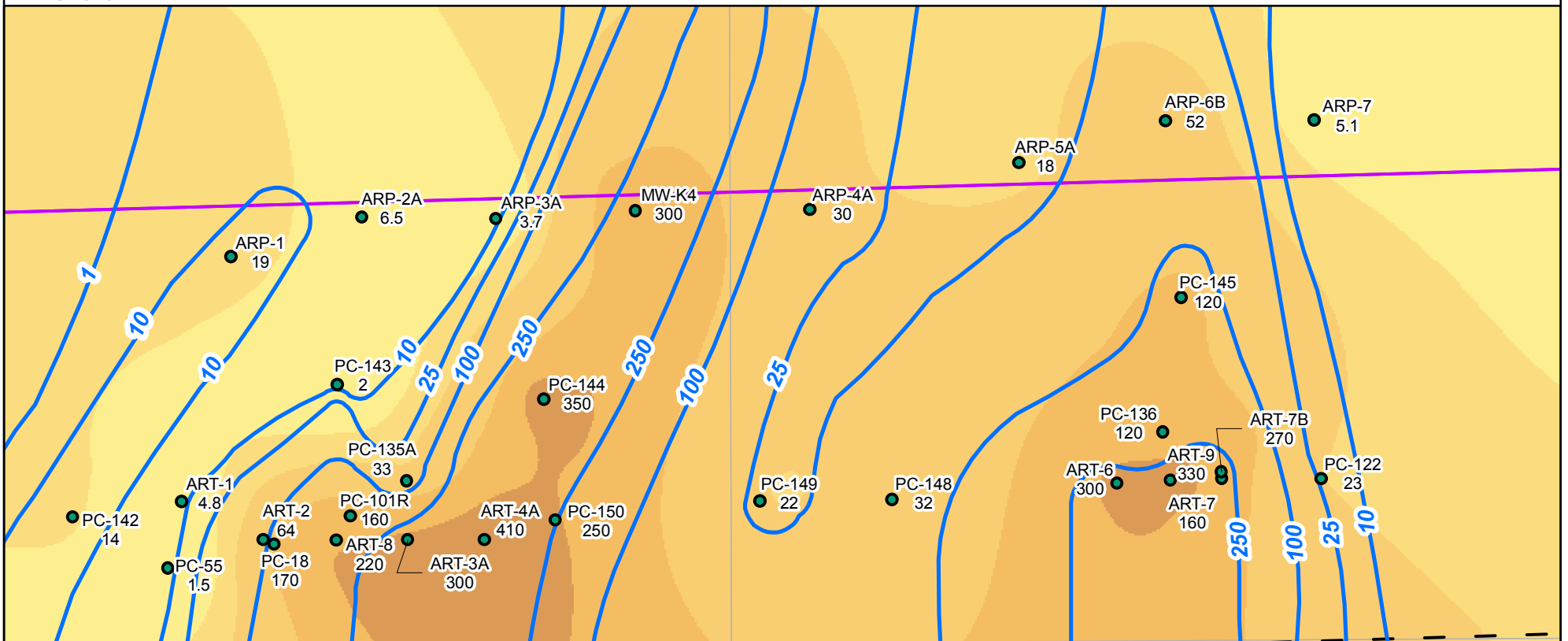
0 1,500  
Feet

Path: H:\Perchlorate\NERT\GIS\21-32100H05 - Mass Calculations\Python\GIS Maps\Kriging9 - Kriging\_per\_2012.mxd

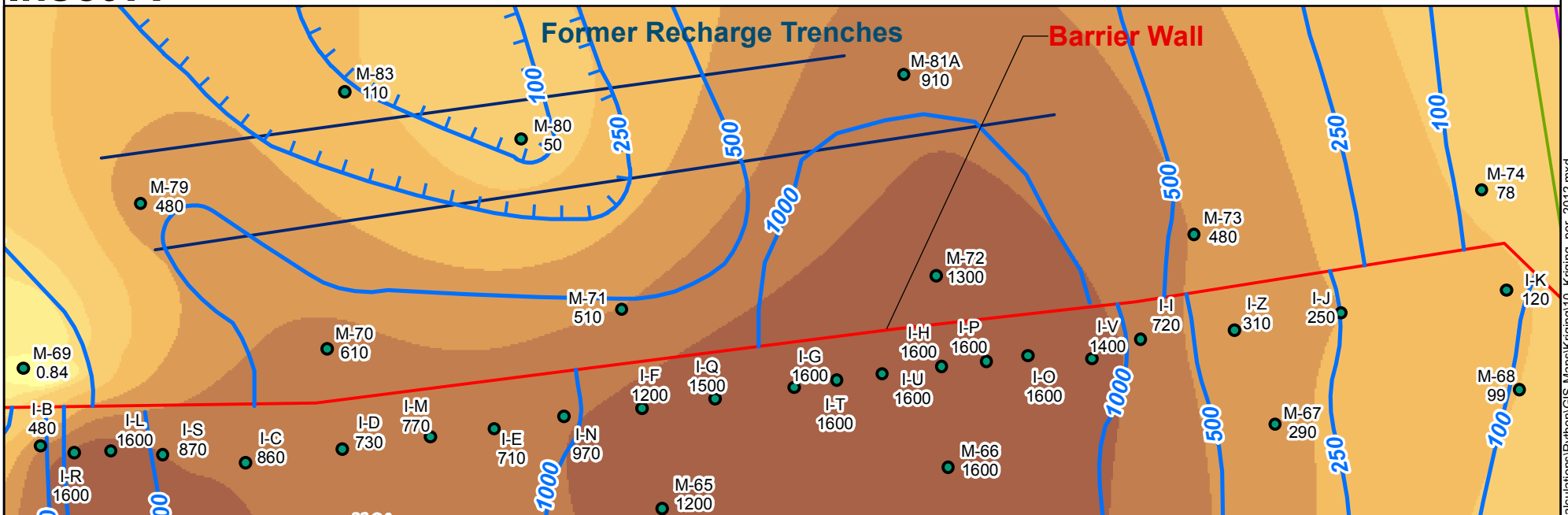
# Inset C



# Inset B



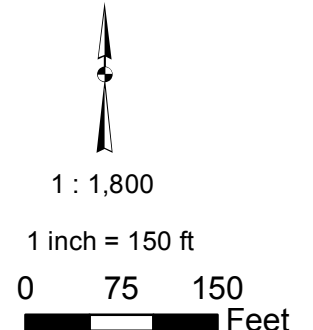
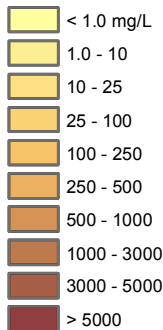
# Inset A



## LEGEND

- Shallow Water Bearing Zone Well (used in Contouring)
- - - Perchlorate Iso-concentration Line (mg/L) (Dashed where approximate)
- 1700 Perchlorate Concentration (mg/L)
- ▭ Plume Mass Estimation Boundary

## Perchlorate Interpolated Concentrations for 2012 (Kriging) N



Grid: State Plane, Nevada East, NAD83, Feet



2200 Powell St., Suite 700, Emeryville, CA 94608

**Kriging Interpolation of Groundwater Perchlorate (2012)**  
Nevada Environmental Response Trust Site, Henderson, Nevada

Drafter: EA

Date: 8/29/2013

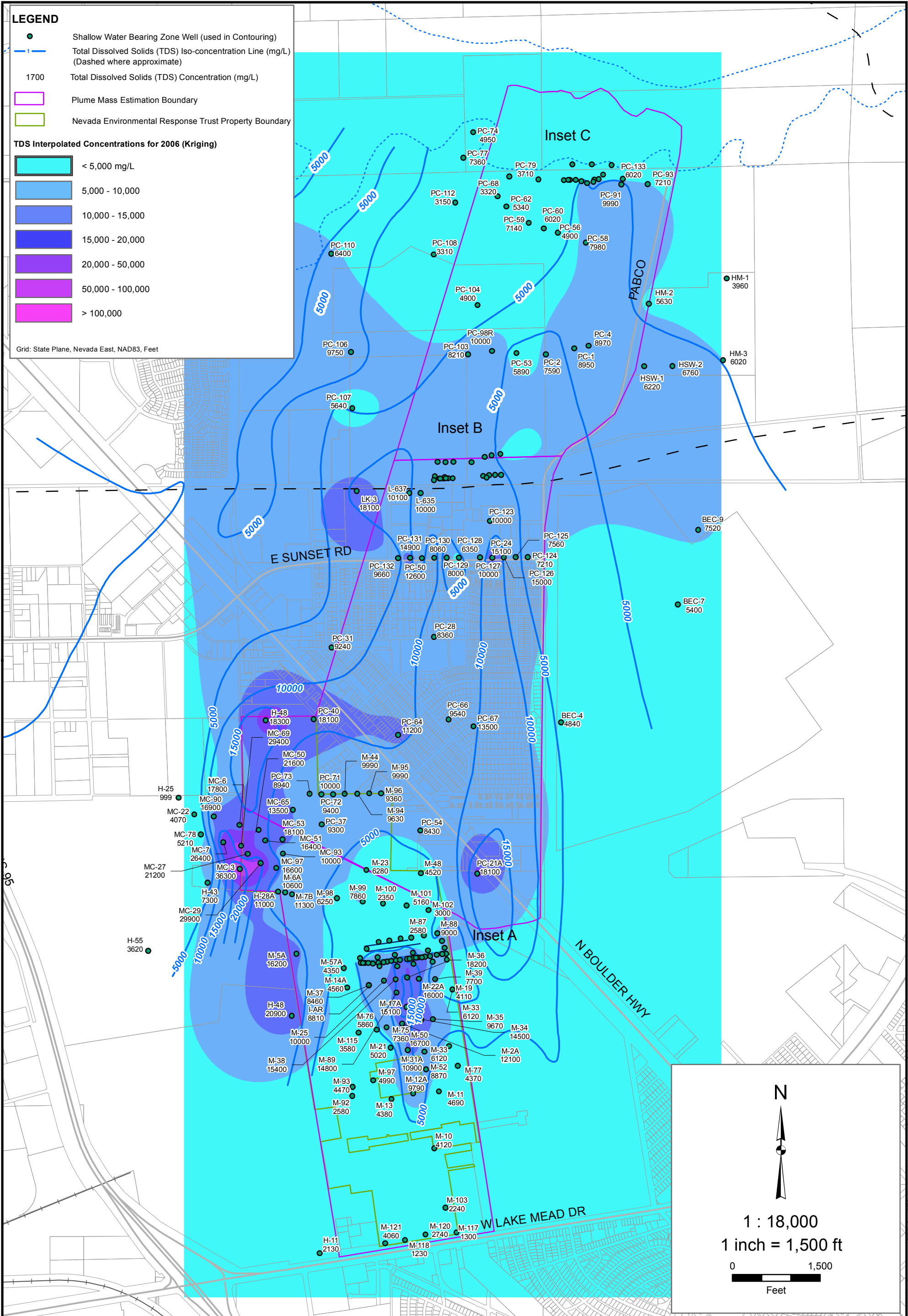
Contract Number: 21-32100H05

Approved by:

Revised:

Figure  
**1-5b**

Path: H:\LePetomane\NERT\GWE\TS21-32100H05 - Mass Calculations\Python\GIS Maps\Kriging10\_Kriging\_per\_2012.mxd



2200 Powell St., Suite 700, Emeryville, CA 94608

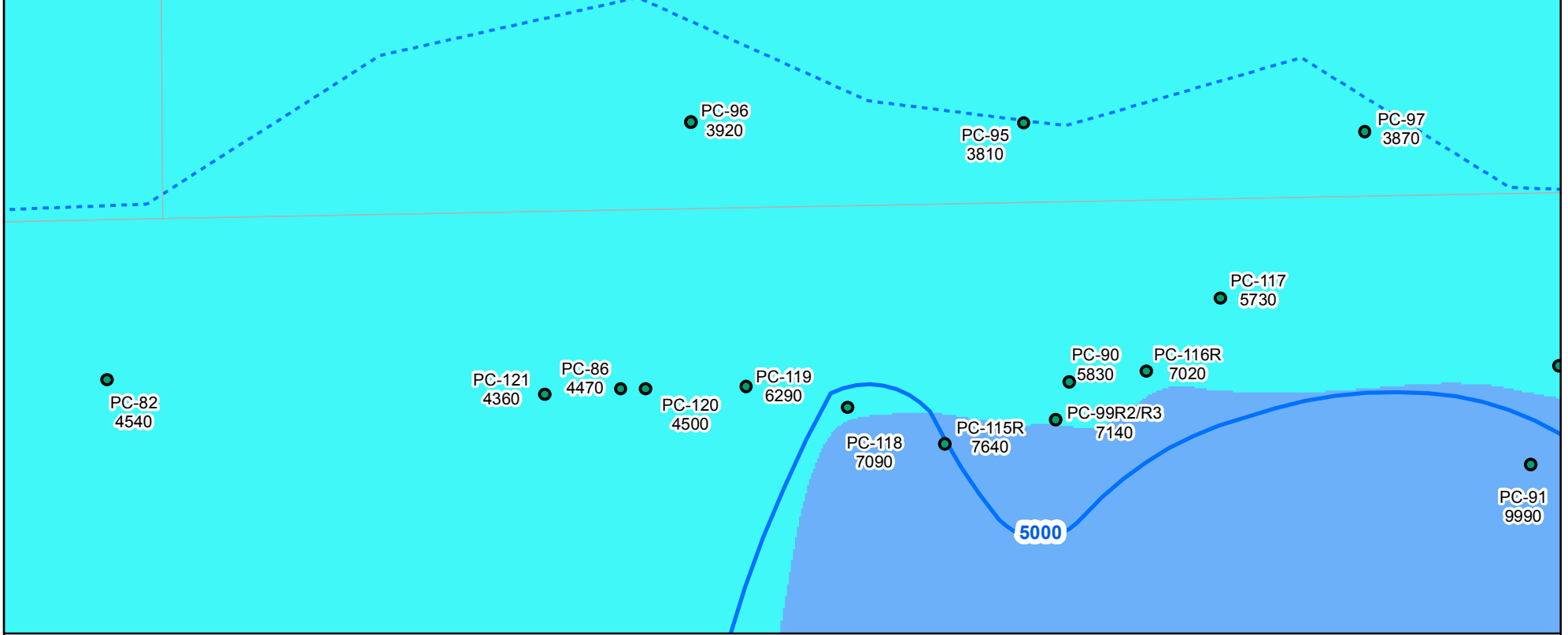
**Kriging Interpolation of Groundwater TDS (2006)**  
Nevada Environmental Response Trust Site, Henderson, Nevada

Drafter: EA      Date: 8/29/2013      Contract Number: 21-32100H05      Approved by:      Revised:

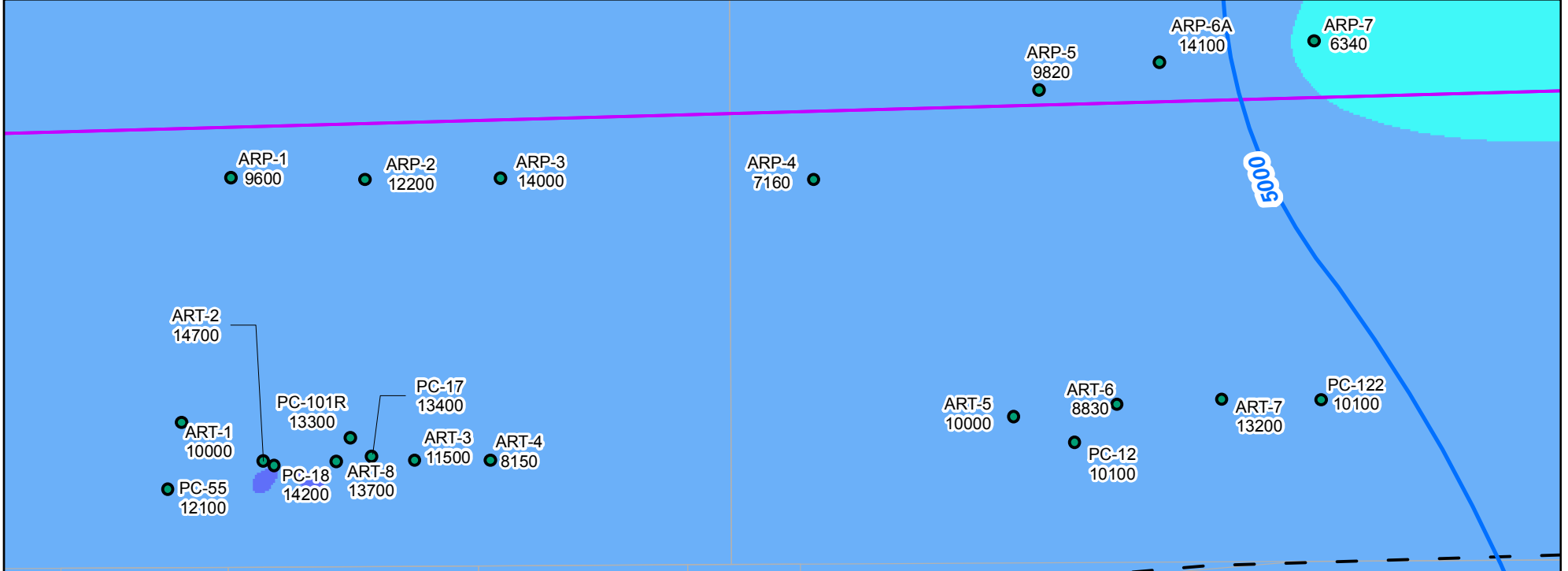
Figure  
**1-6a**

Path: H:\Perfomance\NERT\GIS\21-32100H05 - Mass Calculators\Python\GIS Maps\Kriging1T\_Kriging\_tds\_2006.mxd

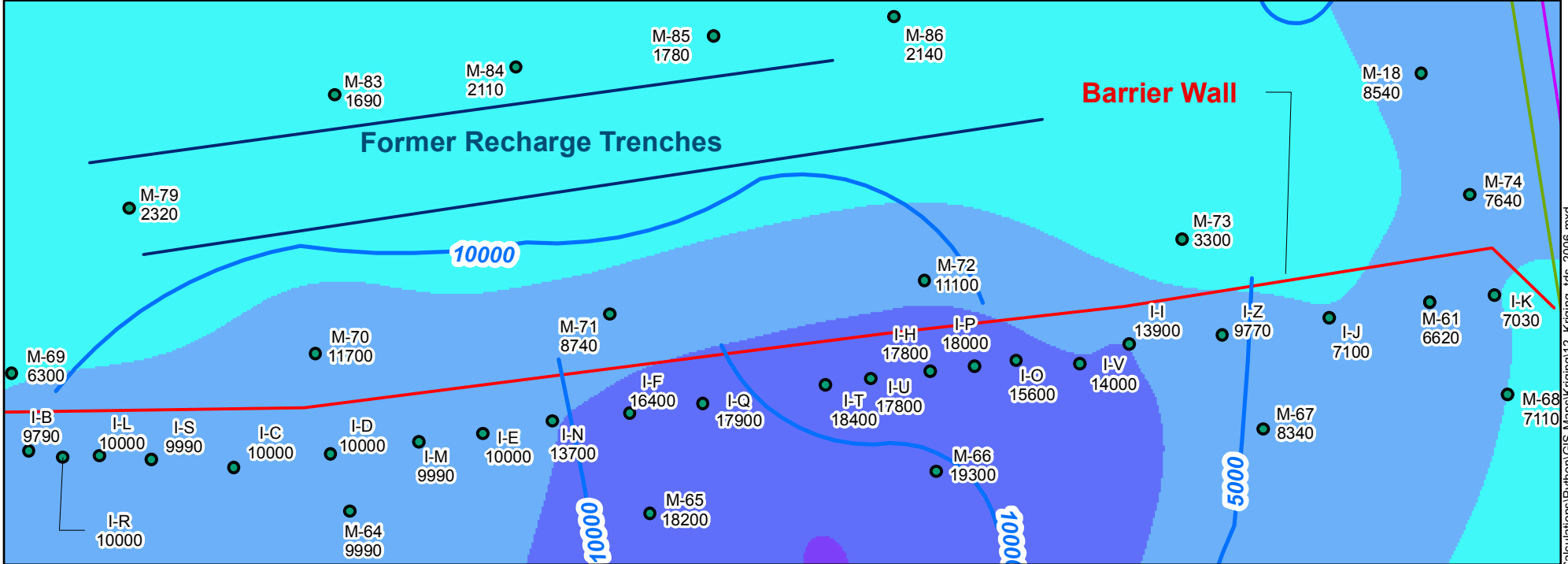
# Inset C



# Inset B



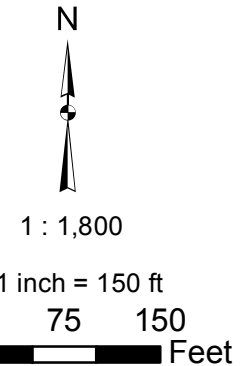
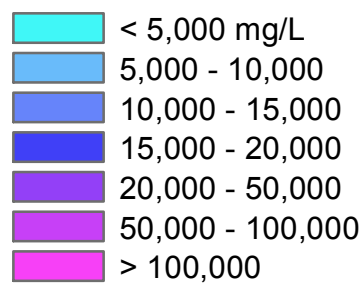
# Inset A



## LEGEND

- Shallow Water Bearing Zone Well (used in Contouring)
- 1- Total Dissolved Solids (TDS) Iso-concentration Line (mg/L) (Dashed where approximate)
- 1700 Total Dissolved Solids (TDS) Concentration (mg/L)
- Plume Mass Estimation Boundary

## TDS Interpolated Concentrations for 2006 (Kriging)



Grid: State Plane, Nevada East, NAD83, Feet



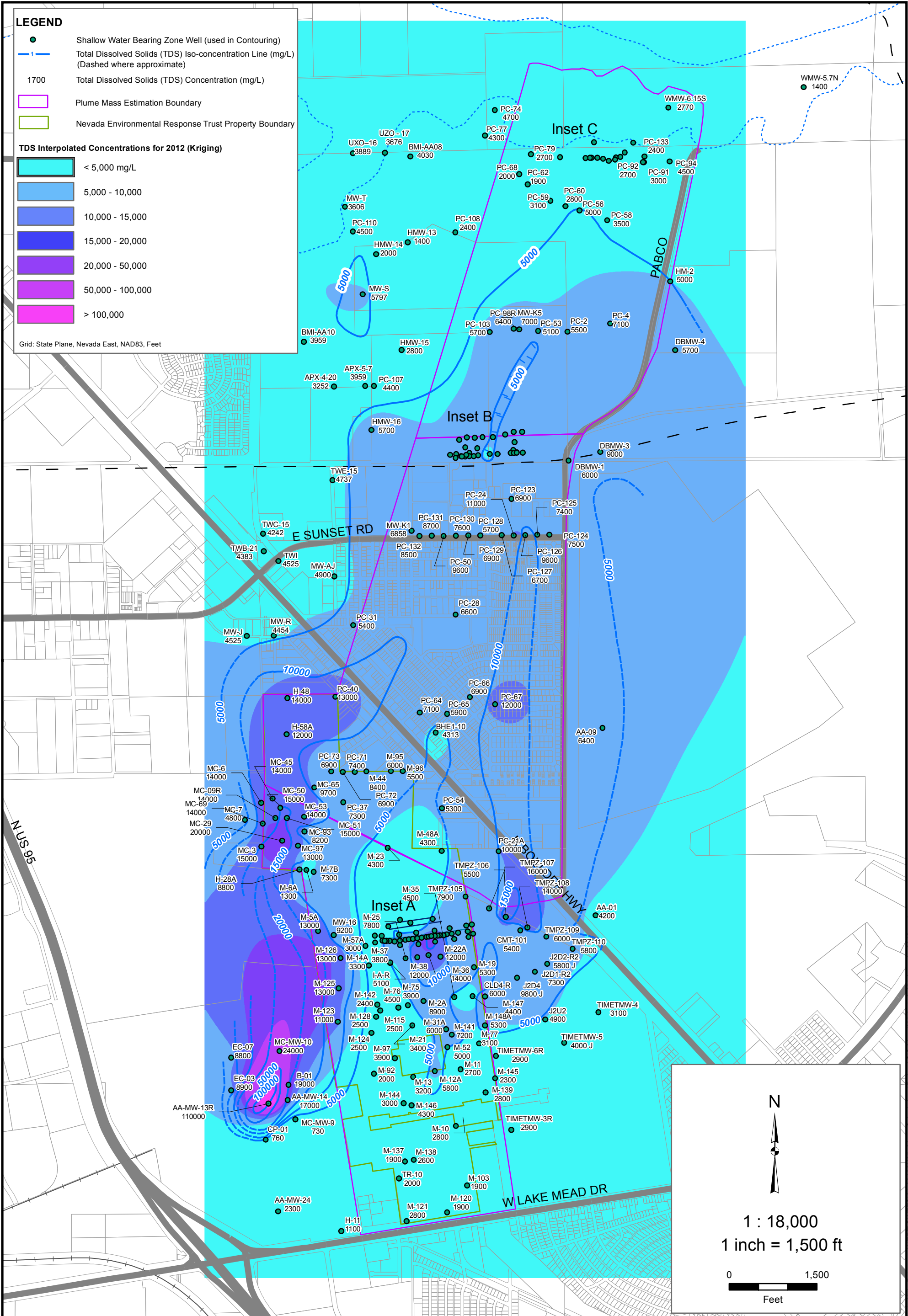
2200 Powell St., Suite 700, Emeryville, CA 94608

**Kriging Interpolation of Groundwater TDS (2006)**  
Nevada Environmental Response Trust Site, Henderson, Nevada

Drafter: EA      Date: 8/29/2013      Contract Number: 21-32100H05      Approved by:      Revised:

Figure  
**1-6b**

Path: H:\LePetomane\NERT\GWE\TS21-32100H05 - Mass Calculations\Python\GIS Maps\Kriging12\_Kriging\_tos\_2006.mxd



**LEGEND**

- Shallow Water Bearing Zone Well (used in Contouring)
- Total Dissolved Solids (TDS) Iso-concentration Line (mg/L) (Dashed where approximate)
- 1700 Total Dissolved Solids (TDS) Concentration (mg/L)
- Plume Mass Estimation Boundary
- Nevada Environmental Response Trust Property Boundary

**TDS Interpolated Concentrations for 2012 (Kriging)**

- < 5,000 mg/L
- 5,000 - 10,000
- 10,000 - 15,000
- 15,000 - 20,000
- 20,000 - 50,000
- 50,000 - 100,000
- > 100,000

Grid: State Plane, Nevada East, NAD83, Feet

N

1 : 18,000  
1 inch = 1,500 ft

0 1,500  
Feet

**Kriging Interpolation of Groundwater TDS (2012)**  
Nevada Environmental Response Trust Site, Henderson, Nevada

Figure  
**1-7a**

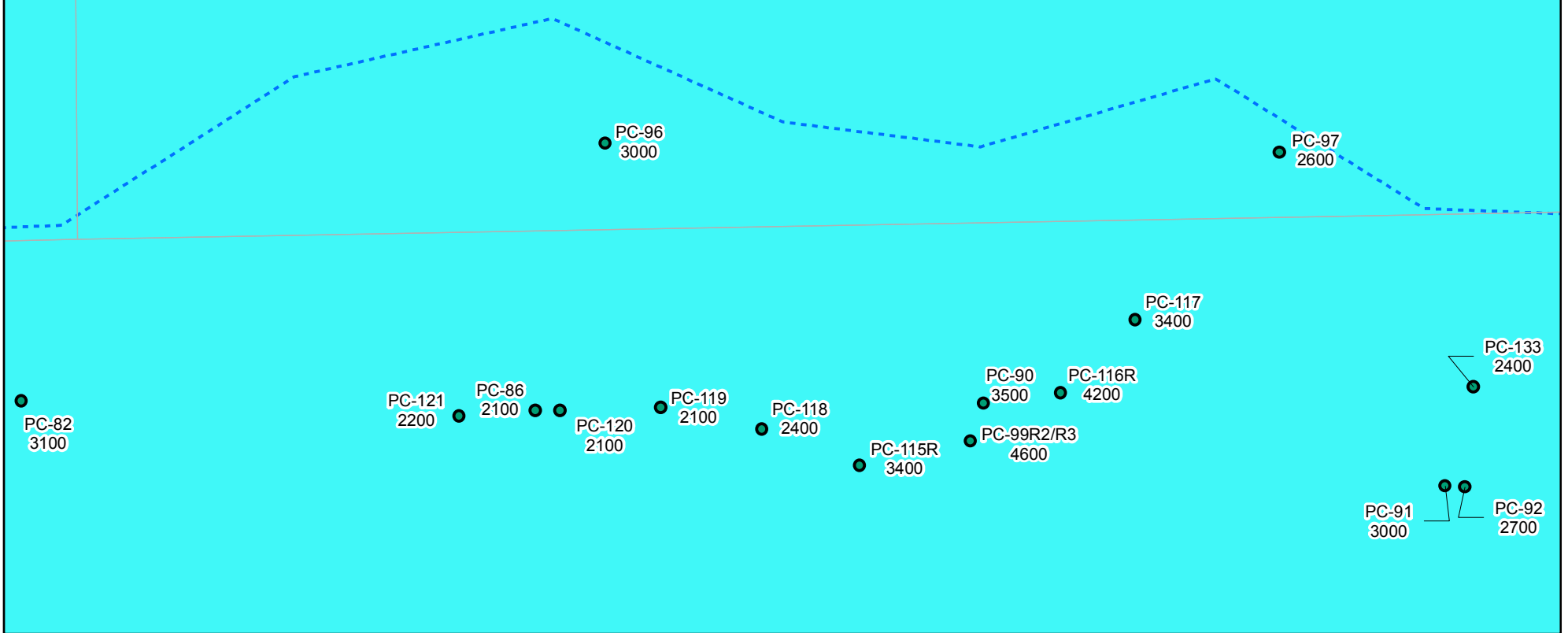


2200 Powell St., Suite 700, Emeryville, CA 94608

Drafter: EA      Date: 8/29/2013      Contract Number: 21-32100H05      Approved by:      Revised:

Path: H:\Lepetomane\NERT\GIS\TDS\21-32100H05 - Mass Calculations\Python\GIS Maps\Kriging13 - Kriging\_tds\_2012.mxd

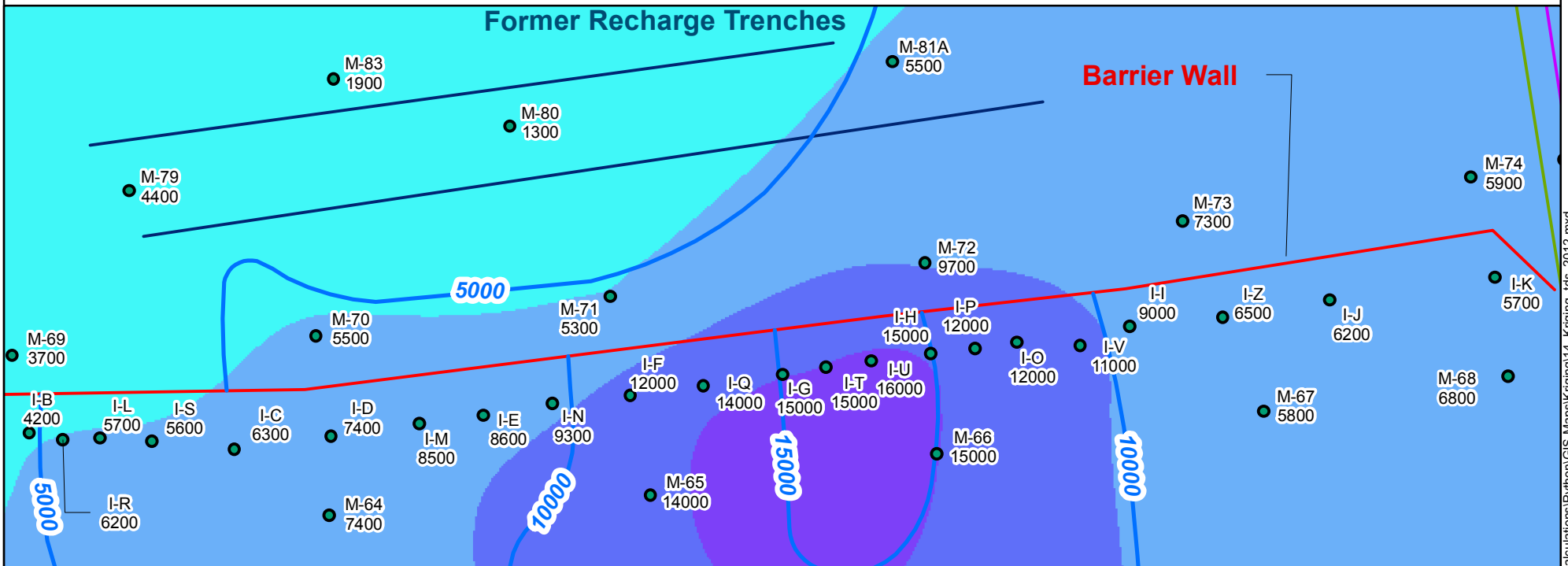
# Inset C



# Inset B



# Inset A

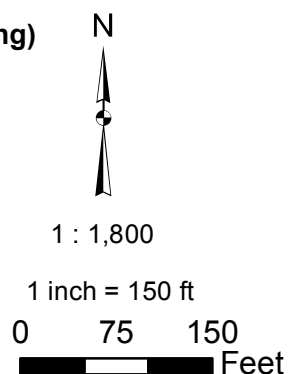


## LEGEND

- Shallow Water Bearing Zone Well (used in Contouring)
- - - Total Dissolved Solids (TDS) Iso-concentration Line (mg/L) (Dashed where approximate)
- 1700 Total Dissolved Solids (TDS) Concentration (mg/L)
- Plume Mass Estimation Boundary

## TDS Interpolated Concentrations for 2012 (Kriging)

- < 5,000 mg/L
- 5,000 - 10,000
- 10,000 - 15,000
- 15,000 - 20,000
- 20,000 - 50,000
- 50,000 - 100,000
- > 100,000



Grid: State Plane, Nevada East, NAD83, Feet



2200 Powell St., Suite 700, Emeryville, CA 94608

**Kriging Interpolation of Groundwater TDS (2012)**  
Nevada Environmental Response Trust Site, Henderson, Nevada

Drafter: EA

Date: 8/29/2013

Contract Number: 21-32100H05

Approved by:

Revised:

Figure  
**1-7b**

Path: H:\LePetomane\NER\GWETS\21-32100H05 - Mass Calculations\Python\GIS Maps\Kriging\14\_Kriging\_tds\_2012.mxd