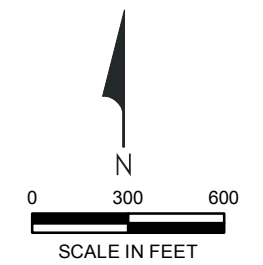


Legend

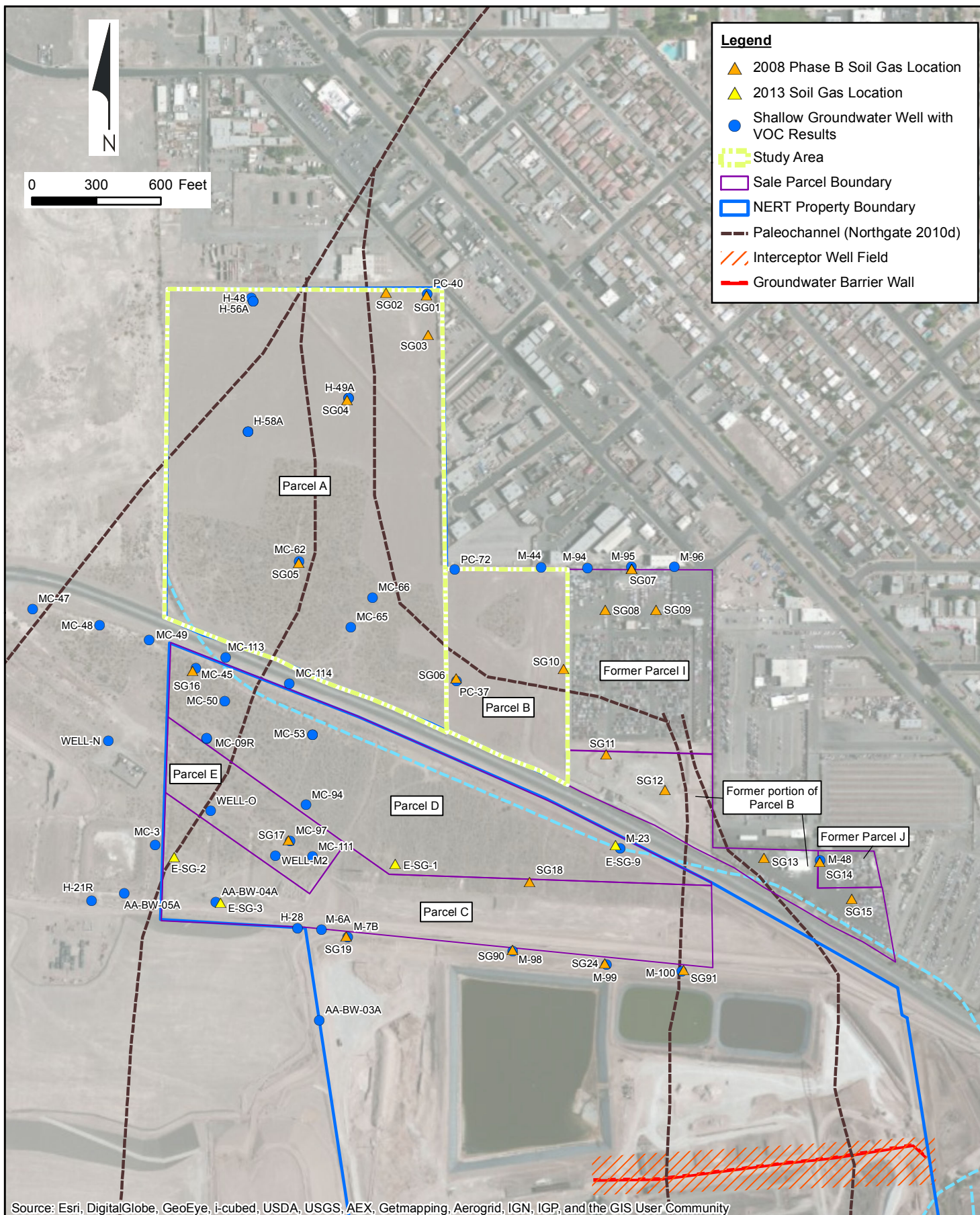
- ▲ 2008 Phase B Soil Gas Location (µg/m³)
- ▲ 2013 Soil Gas Location (µg/m³)
- Shallow Groundwater Well (µg/L)
- Study Area
- Former portion of Parcel B
- Parcel C
- Parcel D
- Parcel E
- Former Parcel I
- Former Parcel J
- Ditches
- Interceptor Well Field
- Groundwater Barrier Wall

NOTE:
Data boxes highlighted blue indicate groundwater data in µg/L and databoxes highlighted yellow indicate soil gas data in µg/m³.



Soil Gas & Shallow Groundwater Results for Benzene, Chloroform, & 1,4-Dichlorobenzene
Nevada Environmental Response Trust Site
Henderson, Nevada

Date: 04/26/13	Contract Number: 21-32100GA	Figure
Drafter: RS	Approved:	Revised:
		2



Figure

Soil Gas & Shallow Groundwater Well Sampling Locations
 Nevada Environmental Response Trust Site, Henderson, Nevada



FIGURE 3
Comparison of Chloroform Concentrations in Soil Gas and Shallow Groundwater
in Co-located Locations Within and Near Parcels A and B

Location Group	Soil Gas			Groundwater		
	Boring ID	Sample Date	Chloroform ($\mu\text{g}/\text{m}^3$)	Well ID	Sample Date	Chloroform ($\mu\text{g}/\text{L}$)
Parcel A	SG01	5/29/2008	14	PC-40	6/18/2008	1.6
	SG04	5/29/2008	8.6	H-49A	6/24/2008	3
	SG05	5/29/2008	62	MC-62	6/23/2008	2.3
Parcel B	SG06	5/20/2008	34	PC-37	6/20/2008	2
Near Parcels A/B	E-SG-2	3/7/2013	460	MC-3	5/27/2009	16
	E-SG-3	3/7/2013	2900	AA-BW-04A	10/20/2011	330
	E-SG-9	3/8/2013	98	M-23	6/25/2008	130
	SG07	5/17/2008	430	M-95	6/27/2008	390
	SG14	5/20/2008	1000	M-48	7/9/2008	180
	SG16	5/18/2008	84	MC-45	6/25/2008	3
	SG17	5/18/2008	180	MC-97	6/25/2008	3.8
	SG19	5/28/2008	70	M-7B	6/26/2008	2.1
	SG24	5/28/2008	1300	M-99	5/6/2010	150
	SG90	5/28/2008	3900	M-98	11/30/2006	810
SG91	5/21/2008	490	M-100	12/4/2006	38	

