




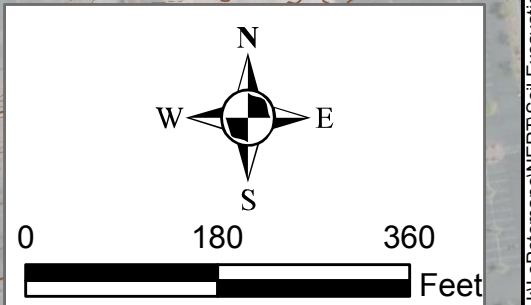
Data Sources:
ESRI 2010 Bing Maps

Legend:

 Nevada Environmental Response Trust Property Boundary

Notes:

1. Contours represent topographic surface in feet above mean sea level. Contour interval = 1 foot. Major contour interval = 5 feet. Contours provided by Las Vegas Paving.
2. Source of pre-remediation topographic information shown is from an aerial survey performed by PBS&J on behalf of Basic Remediation Company (BRC) on January 17, 2008, supplemented with survey data obtained from LVP prior to initiating remediation activities.



ENVIRON

6001 Shellmound St., Suite 700, Emeryville, CA 94608

Site Topographic Map – Original Grade
Nevada Environmental Response Trust Site, Henderson, Nevada

Drafter: RS

Date: 1/20/12

Contract Number: 21-28200

Approved by: DR

Revised:

Plate
1

Path: H:\Documents\BRC\BRC_Escrow\SSM\Map\Other\Figures\Remediation\OriginalGrade\Plate1_Site_Topographic2012_FINAL.mxd

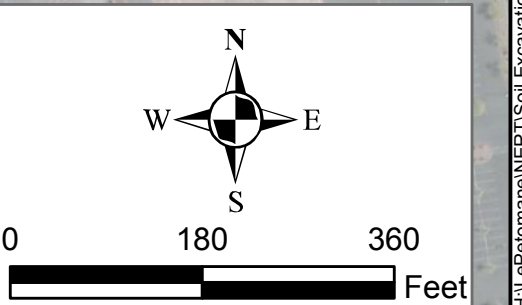


Data Sources:
ESRI 2010 Bing Maps

Legend:

Nevada Environmental Response Trust Property Boundary

Notes: Contours represent topographic surface in feet above mean sea level. Contour interval = 1 foot. Major contour interval = 5 feet. Contours provided by Las Vegas Paving.



ENVIRON

6001 Shellmound St., Suite 700, Emeryville, CA 94608

Site Topographic Map – Post-Remediation
Nevada Environmental Response Trust Site, Henderson, Nevada

Drafter: RS

Date: 1/20/12

Contract Number: 21-28200


Approved by: DR

Revised:

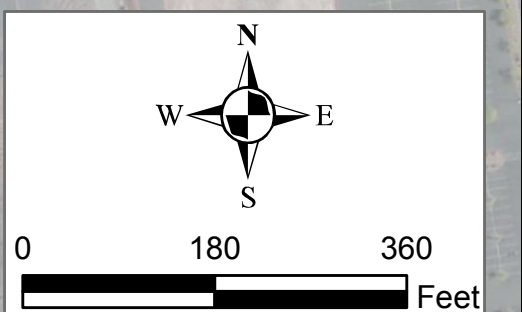


Data Sources:
ESRI 2010 Bing Maps

Legend:

 Nevada Environmental Response Trust Property Boundary

Notes: Contours represent topographic surface in feet above mean sea level. Contour interval = 1 foot. Major contour interval = 5 feet. Contours provided by Las Vegas Paving.



ENVIRON

6001 Shellmound St., Suite 700, Emeryville, CA 94608

Site Topographic Map – Final Grade
Nevada Environmental Response Trust Site, Henderson, Nevada

Drafter: RS

Date: 1/20/12

Contract Number: 21-28200

Approved by: DR

Revised:

Plate

3

Path: H:\Customer\NERS\Site\Escan\GIS\MapServer\Images\Render\Contour\MapServer\Site_Topographic_Final.mxd



SSAQ6-02		
Depth (ft bgs)	0.3'	0.3' (Dup)
Dioxin TEQ	1,500	1,300
Arsenic	11	12
Magnesium	18,000	18,000
Benzo(a)pyrene	0.27 J	0.55
Benzo(a)pyrene TEQ	0.599	1.011
Hexachlorobenzene	0.63	0.69
Other PAHs	below BCL	

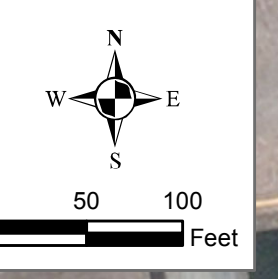
EE-B21-1	
Depth (ft bgs)	Surface
Perchlorate	3.64
Arsenic	3.9
Hexachlorobenzene	<0.36

Target Remediation Concentrations:		
Dioxin	Dioxin TEQ (Calculated)	2,700 ppt
Perchlorate	Perchlorate	795 mg/kg
Hexachlorobenzene	Hexachlorobenzene	1.2 mg/kg
Metals	Arsenic	7.2 mg/kg
Metals	Lead	800 mg/kg
Metals	Magnesium	100,000 mg/kg
Metals	Manganese	100,000 mg/kg
VOCs	1,2-Dichlorobenzene	373,000 ug/kg
VOCs	1,4-Dichlorobenzene	14,300 ug/kg
VOCs	Hexachlorobenzene	24,600 ug/kg
VOCs	Tetrachloroethylene (PCE)	3,280 ug/kg
PAHs	Benzo(a)pyrene	0.234 mg/kg
PAHs	Benzo(a)pyrene TEQ	0.234 mg/kg
PAHs	Beta BHC (Beta Hexachlorocyclohexane)	1.4 mg/kg
PAHs	Dibenz(a,h)anthracene	0.234 mg/kg
OCPS	Alpha BHC (Alpha Hexachlorocyclohexane)	0.399 mg/kg
OCPS	Heptachlor	0.426 mg/kg
OCPS	P,P'-DDE	8 mg/kg

Data Sources:
ESRI 2010 Bing-Maps

Legend:

- ENVIRON Collected
- Northgate Collected
- Excavation Areas
- Remediation Zones



Soil Sample Locations and Analytical Results Summary — RZ-B
Nevada Environmental Response Trust Site, Henderson, Nevada



Data Sources:
ESRI 2010 Bing Maps

Legend:

- Soil Sample Locations
 - ENVIRON Collected
 - Northgate Collected
- Excavation Areas
- Remediation Zones

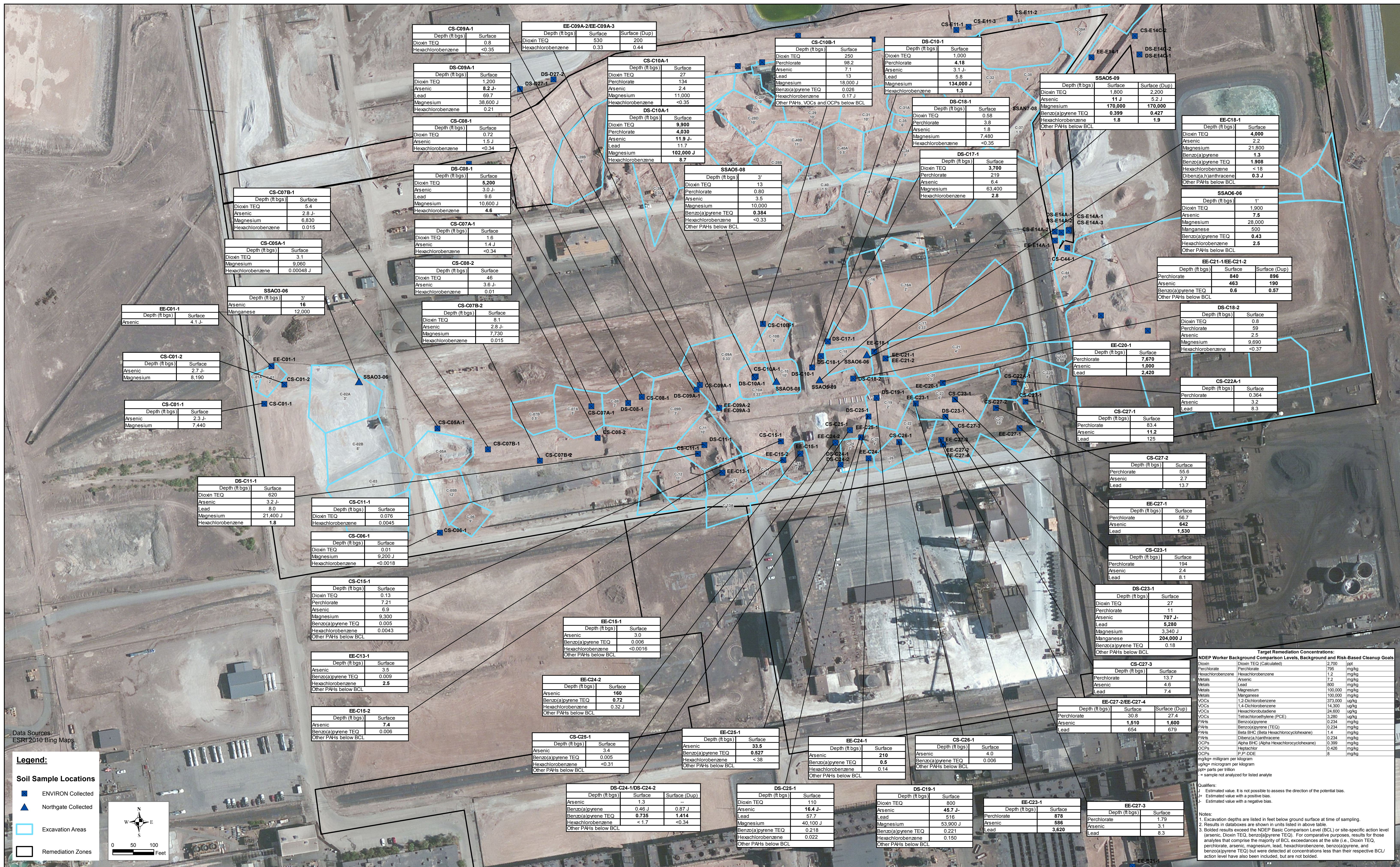
Scale: 0 50 100 Feet

Target Remediation Concentrations:

Parameter	Depth (ft bgs)	Surface	Unit
Dioxin			2,700 ppt
Perchlorate			795 mg/kg
Hexachlorobenzene			1.2 mg/kg
Metals			7.2 mg/kg
Metals			800 mg/kg
Metals			100,000 mg/kg
Metals			100,000 mg/kg
VOCs			373,000 ug/kg
VOCs			14,300 ug/kg
VOCs			24,600 ug/kg
VOCs			3,280 ug/kg
PAHs			0.234 mg/kg
PAHs			0.234 mg/kg
PAHs			0.234 mg/kg
PAHs			0.234 mg/kg
OCs			0.426 mg/kg
OCs			8 mg/kg

Qualifiers:
 J Estimated value. It is not possible to assess the direction of the potential bias.
 + Estimated value with a positive bias.
 - Estimated value with a negative bias.

Notes:
 1. Excavation depths are listed in feet below ground surface at time of sampling.
 2. Results in databases are shown in units listed in above table.
 3. Bolded results exceeded the NDEP Basic Comparison Level (BCL) or site-specific action level (arsenic, Dioxin TEQ, benzo(a)pyrene TEQ). For comparative purposes, results for those analytes that comprise the majority of BCL exceedances at the site (i.e., Dioxin TEQ, perchlorate, arsenic, magnesium, lead, hexachlorobenzene, benzo(a)pyrene, and benzo(a)pyrene TEQ) but were detected at concentrations less than their respective BCL/action level have also been included, but are not bolded.



Sample ID	Depth (ft bgs)	Surface	Surface (Dup)
CS-C09A-1	0.8	<0.35	
EE-C09A-2/EE-C09A-3	530	200	0.44
DS-C09A-1	1,200	8.2 J	
CS-C10A-1	27	134	2.4
DS-C10A-1	9,900	4,030	11.9 J
SSAO5-08	3'	13	0.80
DS-C17-1	3,700	219	6.4
EE-C18-1	4,000	2.2	21,800
SSAO6-06	1'	1,900	7.5
EE-C21-1/EE-C21-2	840	896	190
DS-C18-2	0.8	59	2.5
EE-C20-1	7,670	1,000	2,420
CS-C22A-1	0.364	3.2	8.3
CS-C27-1	83.4	112	125
CS-C27-2	55.8	2.7	13.7
EE-C27-1	56.7	642	1,530
CS-C23-1	194	2.4	8.1
DS-C23-1	27	11	707 J
EE-C27-3	13.7	4.6	7.4
EE-C27-2/EE-C27-4	30.8	27.4	1,600
CS-C27-3	654	679	
EE-C25-1	33.5	0.527	< 38
EE-C24-1	210	0.5	0.14
CS-C26-1	4.0	0.006	
DS-C24-1/DS-C24-2	1.3	0.46 J	0.87 J
DS-C25-1	110	16.4 J	57.7
DS-C18-1	800	45.7 J	516
EE-C23-1	878	586	3,620
EE-C27-3	1.79	3.1	

Data Sources:
ESRI 2010 Bing Maps

Legend:

- ENVIRON Collected
- Northgate Collected
- Excavation Areas
- Remediation Zones

Target Remediation Concentrations:

Contaminant	Depth (ft bgs)	Surface	Surface (Dup)
Dioxin TEQ	2,700	ppb	
Perchlorate	795	mg/kg	
Hexachlorobenzene	1.2	mg/kg	
Metals	7.2	mg/kg	
Lead	800	mg/kg	
Metals	100,000	mg/kg	
Magnesium	100,000	mg/kg	
VOCs	373,000	ug/kg	
VOCs	14,300	ug/kg	
VOCs	24,800	ug/kg	
VOCs	3,280	ug/kg	
PAHs	0.234	mg/kg	
PAHs	0.234	mg/kg	
PAHs	1.4	mg/kg	
PAHs	0.234	mg/kg	
OCs	0.399	mg/kg	
OCs	0.426	mg/kg	
OCs	8	mg/kg	

mg/kg= milligram per kilogram
ug/kg= microgram per kilogram
ppb= parts per billion
J = sample not analyzed for listed analyte

Qualifiers:
J: Estimated value. It is not possible to assess the direction of the potential bias.
H: Estimated value with a positive bias.
L: Estimated value with a negative bias.

Notes:
1. Excavation dates are listed in feet below ground surface at time of sampling.
2. Results in datatables are shown in units listed in above table.
3. Bolded results exceed the NDEP Basic Comparison Level (BCL) or site-specific action level (arsenic, Dioxin TEQ, benzo(a)pyrene TEQ). For comparative purposes, results for those analytes that comprise the majority of BCL exceedances at the site (i.e., Dioxin TEQ, perchlorate, arsenic, magnesium, lead, hexachlorobenzene, benzo(a)pyrene, and benzo(a)pyrene TEQ) but were detected at concentrations less than their respective BCL/ action level have also been included, but are not bolded.

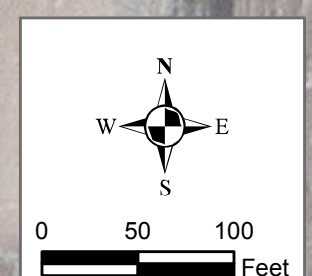


Data Sources:
ESRI 2010 Bing Maps

Legend:

Soil Sample Locations

- ENVIRON Collected
- ▲ Northgate Collected
- Excavation Areas
- Remediation Zones



Target Remediation Concentrations:

Contaminant	Unit	Concentration
Dioxin	TEQ (Calculated)	2.700 ppt
Perchlorate	Perchlorate	795 mg/kg
Hexachlorobenzene	Hexachlorobenzene	1.2 mg/kg
Metals	Arsenic	7.2 mg/kg
Metals	Lead	800 mg/kg
Metals	Magnesium	100,000 mg/kg
Metals	Manganese	100,000 mg/kg
VOCs	1,2-Dichlorobenzene	373,000 ug/kg
VOCs	1,4-Dichlorobenzene	14,300 ug/kg
VOCs	Hexachlorobutadiene	24,800 ug/kg
VOCs	Tetrachloroethylene (PCE)	3,280 ug/kg
PAHs	Benzo(a)pyrene	0.234 mg/kg
PAHs	Benzo(a)pyrene (TEQ)	0.234 mg/kg
PAHs	Beta BHC (Beta Hexachlorocyclohexane)	1.4 mg/kg
PAHs	Dibenz(a,h)anthracene	0.234 mg/kg
OCPs	Alpha BHC (Alpha Hexachlorocyclohexane)	0.399 mg/kg
OCPs	Heptachlor	0.426 mg/kg
OCPs	P,P'-DDE	8 mg/kg

Qualifiers:
J Estimated value. It is not possible to assess the direction of the potential bias.
+ Estimated value with a positive bias.
- Estimated value with a negative bias.

Notes:
1. Excavation depths are listed in feet below ground surface at time of sampling.
2. Results in databases are shown in units listed in above table.
3. Bolded results exceeded the NDEP Basic Comparison Level (BCL) or site-specific action level (arsenic, Dioxin TEQ, benzo(a)pyrene TEQ). For comparative purposes, results for those analytes that comprise the majority of BCL exceedances at the site (i.e., Dioxin TEQ, perchlorate, arsenic, magnesium, lead, hexachlorobenzene, benzo(a)pyrene, and benzo(a)pyrene TEQ) but were detected at concentrations less than their respective BCL/ action level have also been included, but are not bolded.
4. Samples CS-D17B-3 and CS-D24-4 were not analyzed.