




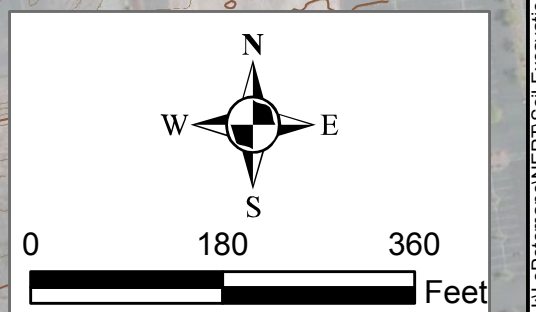
Data Sources:
ESRI 2010 Bing Maps

Legend:

 Nevada Environmental Response Trust Property Boundary

Notes:

1. Contours represent topographic surface in feet above mean sea level. Contour interval = 1 foot. Major contour interval = 5 feet. Contours provided by Las Vegas Paving.
2. Source of pre-remediation topographic information shown is from an aerial survey performed by PBS&J on behalf of Basic Remediation Company (BRC) on January 17, 2008, supplemented with survey data obtained from LVP prior to initiating remediation activities.



ENVIRON

6001 Shellmound St., Suite 700, Emeryville, CA 94608

Site Topographic Map – Original Grade
Nevada Environmental Response Trust Site, Henderson, Nevada

Drafter: RS

Date: 1/20/12

Contract Number: 21-28200

Approved by: DR

Revised:

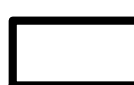
Plate
1

Path: H:\Customer\BRC\BRC - Escrow\BRC\Map\OriginalGrade\Plate1_Site_Topographic2012_FINAL.mxd

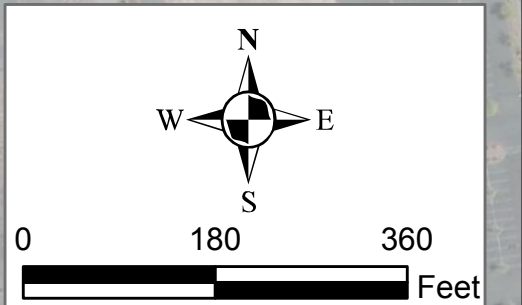


Data Sources:
ESRI 2010 Bing Maps

Legend:

 Nevada Environmental Response Trust Property Boundary

Notes: Contours represent topographic surface in feet above mean sea level. Contour interval = 1 foot. Major contour interval = 5 feet. Contours provided by Las Vegas Paving.



ENVIRON

6001 Shellmound St., Suite 700, Emeryville, CA 94608

Site Topographic Map – Post-Remediation
Nevada Environmental Response Trust Site, Henderson, Nevada

Drafter: RS

Date: 1/20/12

Contract Number: 21-28200

Approved by: DR

Revised:


Plate
2

Path: H:\Information\NEN\2011\Exam\2012\Map\21-28200\21-28200_Site_Topographic_Map.dwg

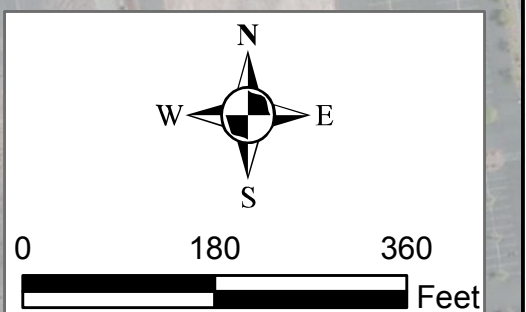


Data Sources:
ESRI 2010 Bing Maps

Legend:

 Nevada Environmental Response Trust Property Boundary

Notes: Contours represent topographic surface in feet above mean sea level. Contour interval = 1 foot. Major contour interval = 5 feet. Contours provided by Las Vegas Paving.



ENVIRON

6001 Shellmound St., Suite 700, Emeryville, CA 94608

Site Topographic Map – Final Grade
Nevada Environmental Response Trust Site, Henderson, Nevada

Drafter: RS

Date: 1/20/12

Contract Number: 21-28200

Approved by: DR

Revised:

Plate

3

Path: H:\Customer\NERS\Site\Escrow\SSM\Map\Other\Figures\Bentley\Drawings\Drawings_Site_Topographic.dwg, 8/14/12.mxd



SSAQ6-02		
Depth (ft bgs)	0.3'	0.3' (Dup)
Dioxin TEQ	1,500	1,300
Arsenic	11	12
Magnesium	18,000	18,000
Benzo(a)pyrene	0.27 J	0.55
Benzo(a)pyrene TEQ	0.599	1.011
Hexachlorobenzene	0.63	0.69
Other PAHs below BCL		

EE-B21-1	
Depth (ft bgs)	Surface
Perchlorate	3.64
Arsenic	3.9
Hexachlorobenzene	<0.36

Data Sources:
ESRI 2010 Bing-Maps

Legend:

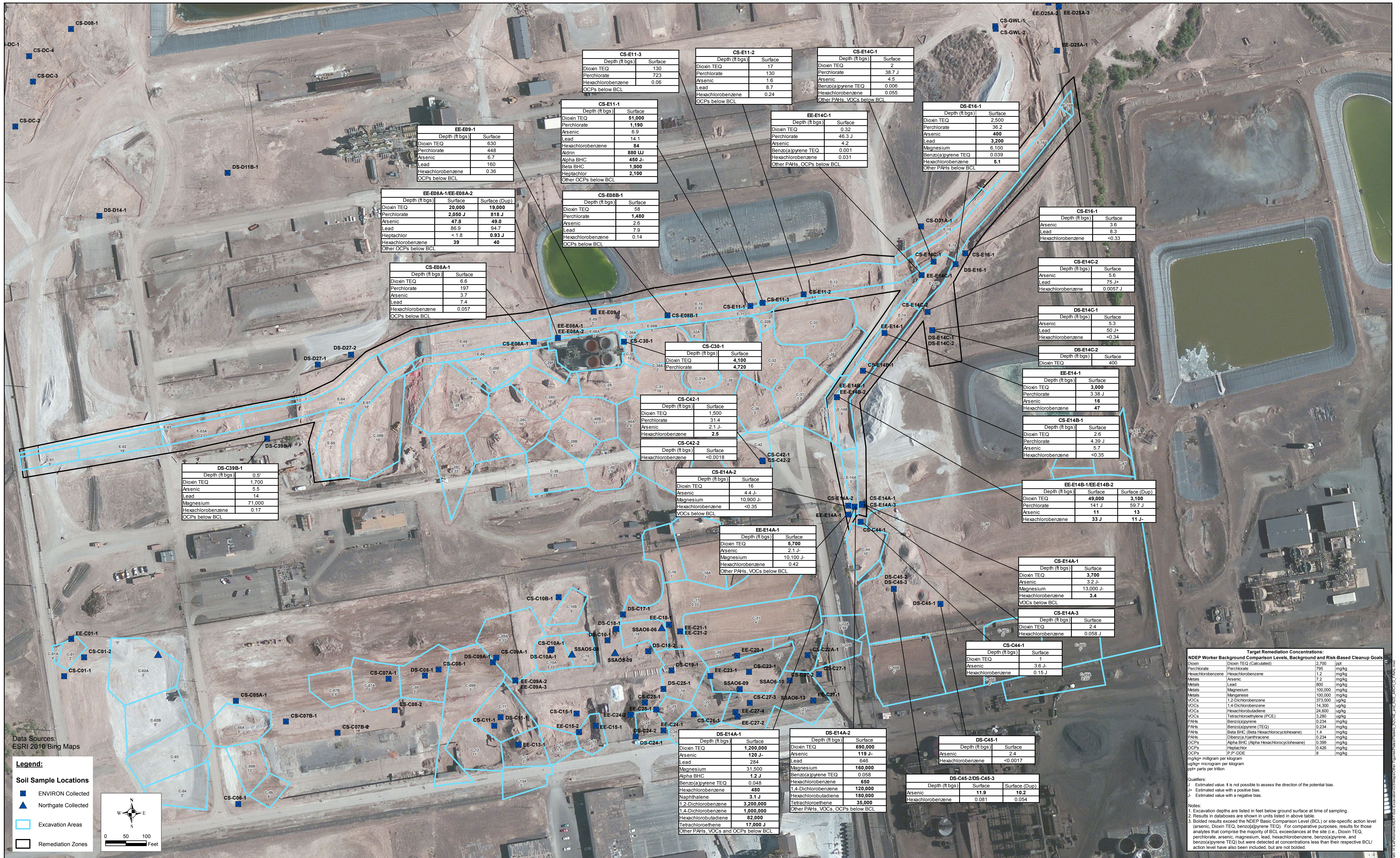
- Soil Sample Locations
 - ENVIRON Collected
 - Northgate Collected
- Excavation Areas
- Remediation Zones

Target Remediation Concentrations:		
Dioxin	Dioxin TEQ (Calculated)	2,700 ppt
Perchlorate	Perchlorate	795 mg/kg
Hexachlorobenzene	Hexachlorobenzene	1.2 mg/kg
Metals	Arsenic	7.2 mg/kg
Metals	Lead	800 mg/kg
Metals	Magnesium	100,000 mg/kg
Metals	Manganese	100,000 mg/kg
VOCs	1,2-Dichlorobenzene	373,000 ug/kg
VOCs	1,4-Dichlorobenzene	14,300 ug/kg
VOCs	Hexachlorobenzene	24,600 ug/kg
VOCs	Tetrachloroethylene (PCE)	3,280 ug/kg
PAHs	Benzo(a)pyrene	0.234 mg/kg
PAHs	Benzo(a)pyrene TEQ	0.234 mg/kg
PAHs	Beta BHC (Beta Hexachlorocyclohexane)	1.4 mg/kg
PAHs	Dibenz(a,h)anthracene	0.234 mg/kg
OCPPs	Alpha BHC (Alpha Hexachlorocyclohexane)	0.399 mg/kg
OCPPs	Heptachlor	0.426 mg/kg
OCPPs	P,P'-DDE	8 mg/kg

mg/kg= milligram per kilogram
ug/kg= microgram per kilogram
ppt= parts per trillion

Qualifiers:
J Estimated value. It is not possible to assess the direction of the potential bias.
+ Estimated value with a positive bias.
- Estimated value with a negative bias.

Notes:
1. Excavation depths are listed in feet below ground surface at time of sampling.
2. Results in databases are shown in units listed in above table.
3. Bolded results exceed the NDEP Basic Comparison Level (BCL) or site-specific action level (arsenic, Dioxin TEQ, benzo(a)pyrene TEQ). For comparative purposes, results for those analytes that comprise the majority of BCL exceedances at the site (i.e., Dioxin TEQ, perchlorate, arsenic, magnesium, lead, hexachlorobenzene, benzo(a)pyrene, and benzo(a)pyrene TEQ) but were detected at concentrations less than their respective BCL/ action level have also been included, but are not bolded.



Data Sources:
ESRI 2010 Bing Maps

Legend:

- Soil Sample Locations
 - ENVIRON Collected
 - Northgate Collected
- Excavation Areas
- Remediation Zones

Scale: 0 50 100 Feet

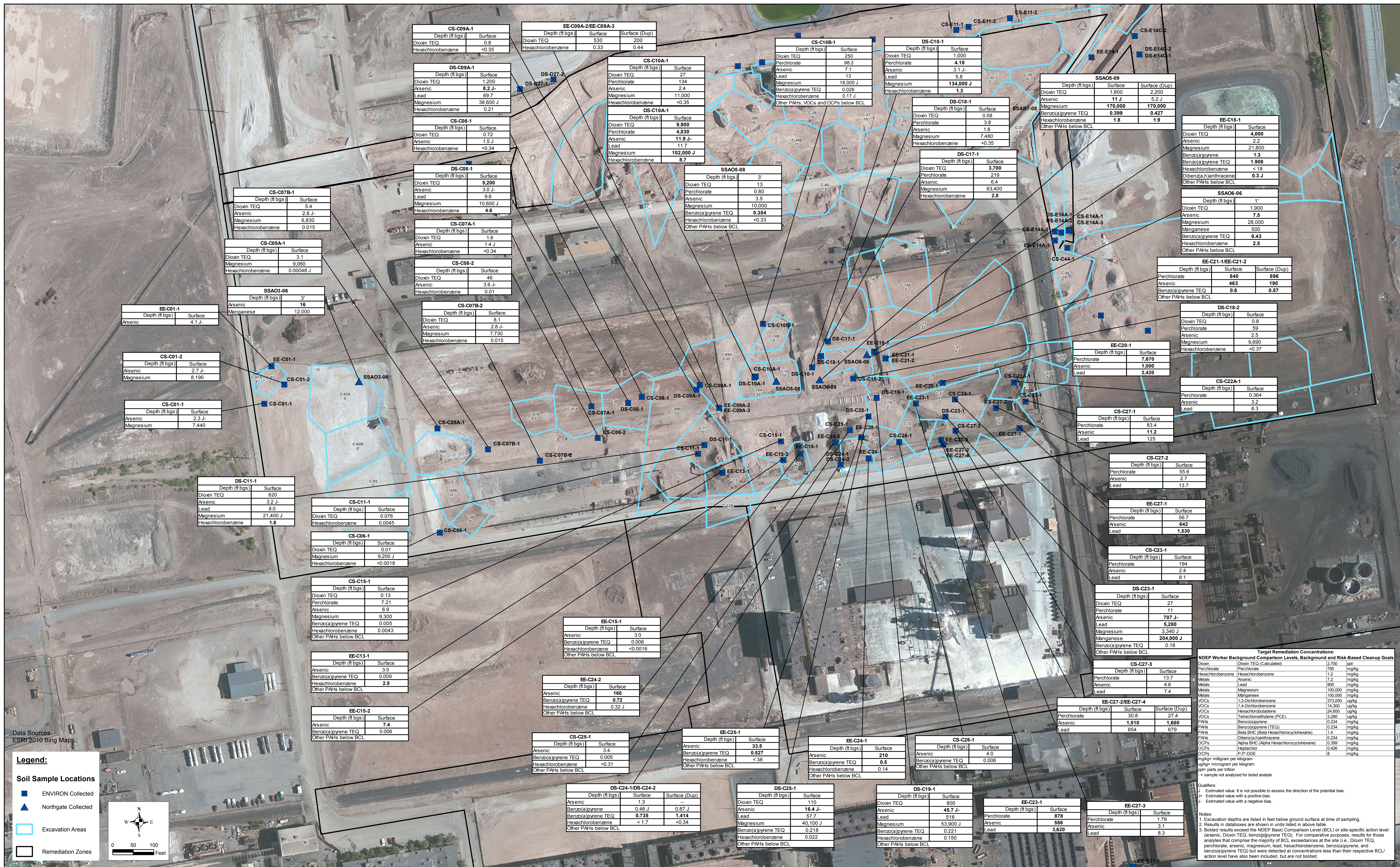
Target Remediation Concentrations:

Contaminant	Depth (ft bgs)	Surface	Surface (Dup)
Dioxin TEQ	2,700	2,700	2,700
Perchlorate	795	795	795
Hexachlorobenzene	1.2	1.2	1.2
Metals	7.2	7.2	7.2
Metals	800	800	800
Metals	100,000	100,000	100,000
Metals	100,000	100,000	100,000
VOCs	373,000	373,000	373,000
VOCs	14,300	14,300	14,300
VOCs	24,600	24,600	24,600
VOCs	3,280	3,280	3,280
PAHs	0.234	0.234	0.234
PAHs	0.234	0.234	0.234
PAHs	1.4	1.4	1.4
PAHs	0.234	0.234	0.234
OCs	0.399	0.399	0.399
OCs	0.426	0.426	0.426
OCs	8	8	8

mg/kg = milligram per kilogram
ug/kg = microgram per kilogram
ppt = parts per trillion

Qualifiers:
J Estimated value. It is not possible to assess the direction of the potential bias.
+ Estimated value with a positive bias.
- Estimated value with a negative bias.

Notes:
1. Excavation depths are listed in feet below ground surface at time of sampling.
2. Results in databases are shown in units listed in above table.
3. Bolded results exceeded the NDEP Basic Comparison Level (BCL) or site-specific action level (arsenic, Dioxin TEQ, benzo(a)pyrene TEQ). For comparative purposes, results for those analytes that comprise the majority of BCL exceedances at the site (i.e., Dioxin TEQ, perchlorate, arsenic, magnesium, lead, hexachlorobenzene, benzo(a)pyrene, and benzo(a)pyrene TEQ) but were detected at concentrations less than their respective BCL/ action level have also been included, but are not bolded.



Data Sources:
ESRI 2010 Bing Maps

Legend:

- ENVIRON Collected
- Northgate Collected
- Excavation Areas
- Remediation Zones

Scale: 0 50 100 Feet

Target Remediation Concentrations:

Contaminant	Depth (ft bgs)	Surface	Surface (Dup)
Dioxin TEQ		2,700	ppb
Perchlorate		795	mg/kg
Hexachlorobenzene		1.2	mg/kg
Metals		7.2	mg/kg
Lead		800	mg/kg
Metals		100,000	mg/kg
Magnesium		100,000	mg/kg
VOCs		373,000	ug/kg
1,2-Dichlorobenzene		14,300	ug/kg
VOCs		24,800	ug/kg
VOCs		3,280	ug/kg
PAHs		0.234	mg/kg
Benzo(a)pyrene TEQ		0.234	mg/kg
PAHs		1.4	mg/kg
Beta BHC (Beta Hexachlorocyclohexane)		0.234	mg/kg
OCs		0.399	mg/kg
Alpha BHC (Alpha Hexachlorocyclohexane)		0.426	mg/kg
OCs		8	mg/kg

mg/kg= milligram per kilogram
ug/kg= microgram per kilogram
ppb= parts per billion
- = sample not analyzed for listed analyte

Qualifiers:
J: Estimated value. It is not possible to assess the direction of the potential bias.
H: Estimated value with a positive bias.
L: Estimated value with a negative bias.

Notes:
1. Excavation dates are listed in feet below ground surface at time of sampling.
2. Results in datatables are shown in units listed in above table.
3. Bolded results exceed the NDEP Basic Comparison Level (BCL) or site-specific action level (arsenic, Dioxin TEQ, benzo(a)pyrene TEQ). For comparative purposes, results for those analytes that comprise the majority of BCL exceedances at the site (i.e., Dioxin TEQ, perchlorate, arsenic, magnesium, lead, hexachlorobenzene, benzo(a)pyrene, and benzo(a)pyrene TEQ) but were detected at concentrations less than their respective BCL/ action level have also been included, but are not bolded.



Data Sources:
ESRI 2010 Bing Maps

Legend:

- ENVIRON Collected
- ▲ Northgate Collected
- Excavation Areas
- Remediation Zones

0 50 100 Feet

Target Remediation Concentrations:

Contaminant	Concentration	Unit
Dioxin	7,700	ppb
Perchlorate	795	mg/kg
Hexachlorobenzene	1.2	mg/kg
Metals	7.2	mg/kg
Lead	800	mg/kg
Metals	100,000	mg/kg
Magnesium	760	mg/kg
VOCs	100,000	mg/kg
1,2-Dichlorobenzene	373,000	ug/kg
VOCs	14,300	ug/kg
Hexachlorobutadiene	24,600	ug/kg
VOCs	3,280	ug/kg
Tetrachloroethene (PCE)	0.234	mg/kg
PAHs	0.234	mg/kg
Benzo(a)pyrene (TEQ)	0.234	mg/kg
PAHs	1.4	mg/kg
Beta BHC (Beta Hexachlorocyclohexane)	0.234	mg/kg
PAHs	0.234	mg/kg
Dibenz(a,h)anthracene	0.399	mg/kg
OCs	0.426	mg/kg
Alpha BHC (Alpha Hexachlorocyclohexane)	0.426	mg/kg
OCs	8	mg/kg
P,P'-DDE	8	mg/kg

Qualifiers:
 J Estimated value. It is not possible to assess the direction of the potential bias.
 + Estimated value with a positive bias.
 - Estimated value with a negative bias.

Notes:
 1. Excavation depths are listed in feet below ground surface at time of sampling.
 2. Results in databases are shown in units listed in above table.
 3. Bolded results exceeded the NDEP Basic Comparison Level (BCL) or site-specific action level (arsenic, Dioxin TEQ, benzo(a)pyrene TEQ). For comparative purposes, results for those analytes that comprise the majority of BCL exceedances at the site (i.e., Dioxin TEQ, perchlorate, arsenic, magnesium, lead, hexachlorobenzene, benzo(a)pyrene, and benzo(a)pyrene TEQ) but were detected at concentrations less than their respective BCL/ action level have also been included, but are not bolded.
 4. Samples CS-D17B-3 and CS-D24-4 were not analyzed.

Soil Sample Locations and Analytical Results Summary — RZ-D
Nevada Environmental Response Trust Site, Henderson, Nevada