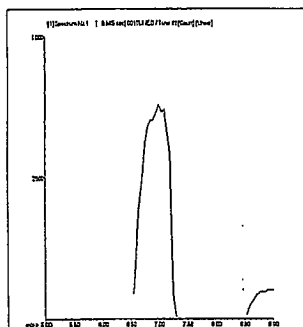


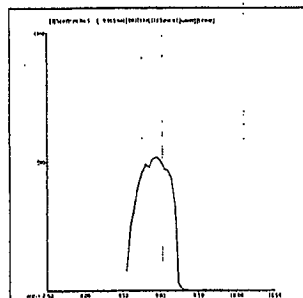
## 200.8 QC Tune Report

Data File: C:\ICPCHEM\1\DATA\AG041910.B\001TUNE.D  
 Date Acquired: Apr 19 2010 07:22 pm  
 Acq. Method: tun\_isis.M  
 Operator: TEL  
 Sample Name: 200.8 TUNE  
 Misc Info:  
 Vial Number: 4  
 Current Method: C:\ICPCHEM\1\METHODS\tun\_isis.M

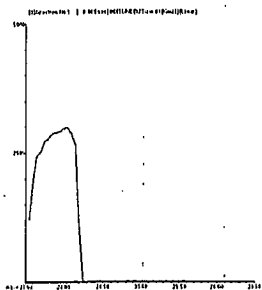
Element	CPS Mean	Rep1	Rep2	Rep3	Rep4	Rep5	%RSD	Required	Flag
7 Li	41194	41615	41165	41391	40668	41133	0.86	5.00	
9 Be	5743	5678	5811	5767	5788	5668	1.14	5.00	
24 Mg	35001	34509	36618	34302	33259	36314	4.07	5.00	
59 Co	190201	192792	191502	187577	189589	189546	1.05	5.00	
115 In	2710675	2708241	2703067	2726581	2715007	2700477	0.39	5.00	
208 Pb	150701	151161	152022	150680	149896	149747	0.62	5.00	
238 U	269758	272015	270315	267091	270138	269232	0.67	5.00	



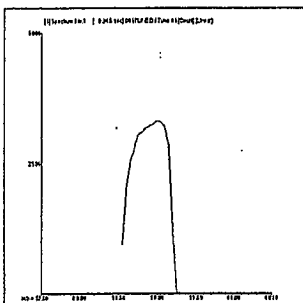
7 Li  
 Mass Calib.  
 Actual: 7.00  
 Required: 6.90 - 7.10  
 Flag:  
 Peak Width  
 Actual: 0.60  
 Required: 0.90  
 Flag:



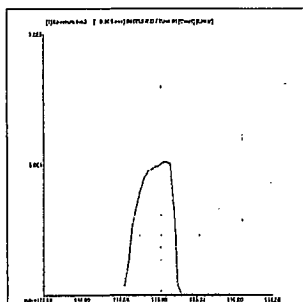
9 Be  
 Mass Calib.  
 Actual: 8.90  
 Required: 8.90 - 9.10  
 Flag:  
 Peak Width  
 Actual: 0.60  
 Required: 0.90  
 Flag:



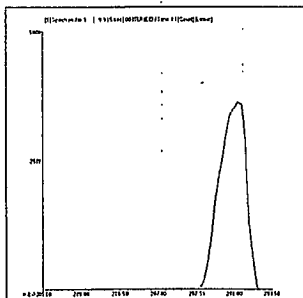
24 Mg  
Mass Calib.  
Actual: 24.00  
Required: 23.90 - 24.10  
Flag:  
Peak Width  
Actual: 0.65  
Required: 0.90  
Flag:



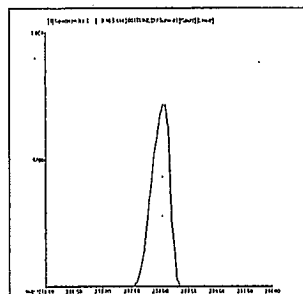
59 Co  
Mass Calib.  
Actual: 59.00  
Required: 58.90 - 59.10  
Flag:  
Peak Width  
Actual: 0.65  
Required: 0.90  
Flag:



115 In  
Mass Calib.  
Actual: 115.05  
Required: 114.90 - 115.10  
Flag:  
Peak Width  
Actual: 0.60  
Required: 0.90  
Flag:



208 Pb  
Mass Calib.  
Actual: 208.00  
Required: 207.90 - 208.10  
Flag:  
Peak Width  
Actual: 0.60  
Required: 0.90  
Flag:



238 U  
Mass Calib.  
Actual: 238.05  
Required: 237.90 - 238.10  
Flag:  
Peak Width  
Actual: 0.55  
Required: 0.90  
Flag:

Tune Result: Pass