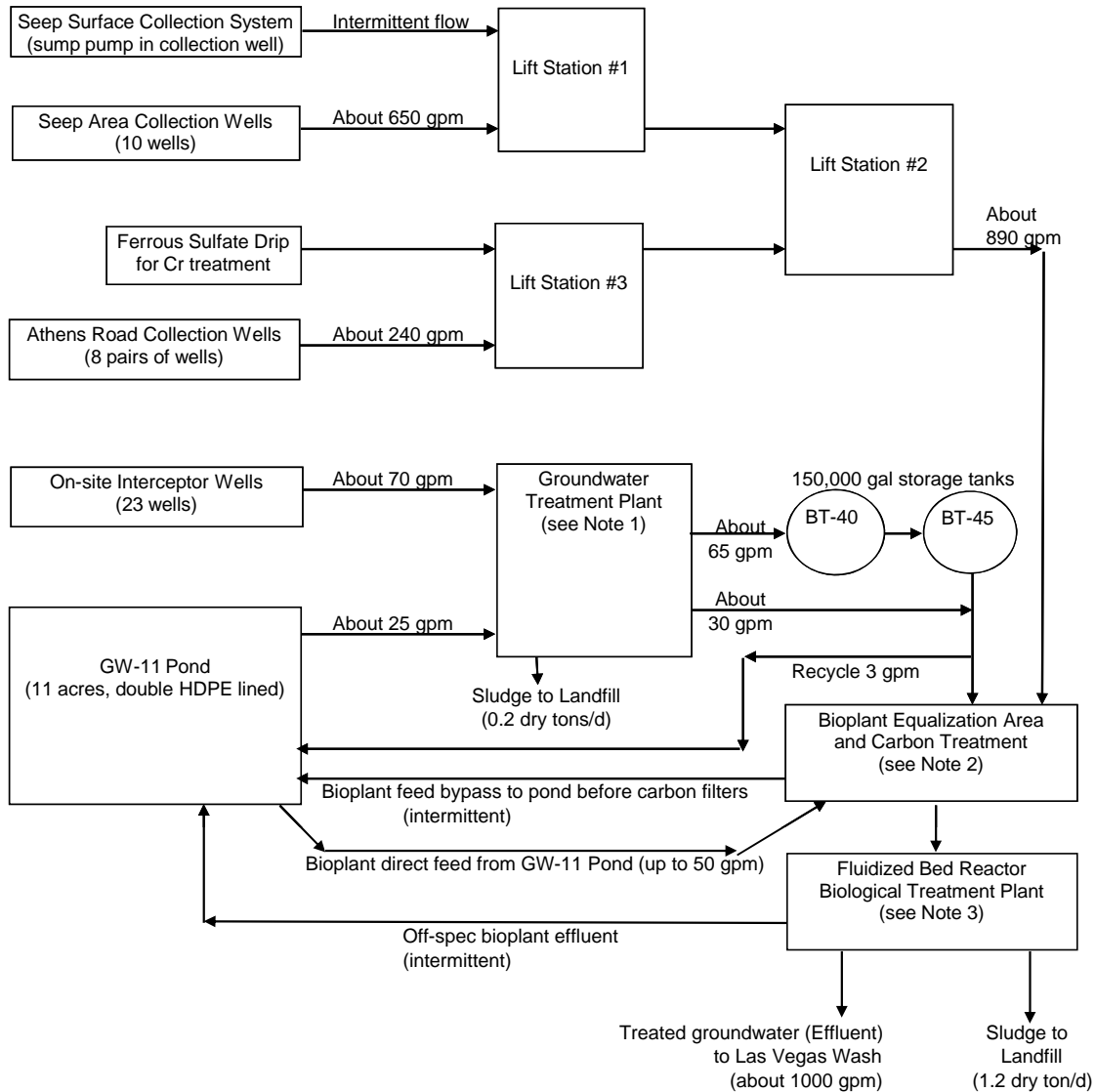


FIGURE 5
TRONOX HENDERSON GROUNDWATER TREATMENT FLOW DIAGRAM

Last modified 12/31/2008



Notes:

- 1) Ferrous sulfate added for chromium removal. Clarifier settles solids. Sludge is removed and landfilled.
- 2) Two 12,000 gallon tanks plus three activated carbon vessels to remove organics which could harm bacteria, followed by cartridge filters.
- 3) Five 33,000 gallon primary reactors, four 28,800 gallon secondary reactors, aeration, dissolved air flotation, UV disinfection, two plate and frame filter presses, and a sand filter.
- 4) Bioplant feed is sampled after cartridge filters (note 2) and effluent is sampled at the discharge to Las Vegas Wash.