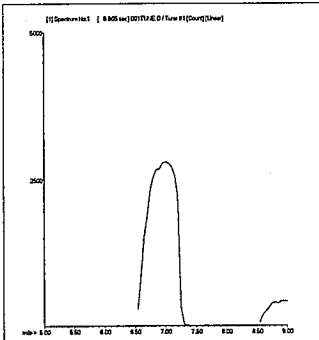


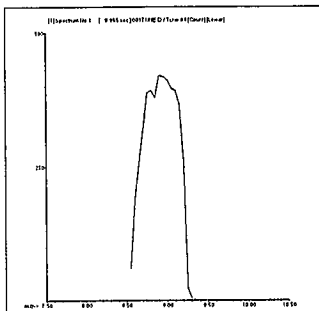
## 200.8 QC Tune Report

Data File: C:\ICPCHEM\1\DATA\AG041310.B\001TUNE.D  
 Date Acquired: Apr 13 2010 07:12 pm  
 Acq. Method: tun\_isis.M  
 Operator: TEL  
 Sample Name: 200.8 TUNE  
 Misc Info:  
 Vial Number: 4  
 Current Method: C:\ICPCHEM\1\METHODS\tun\_isis.M

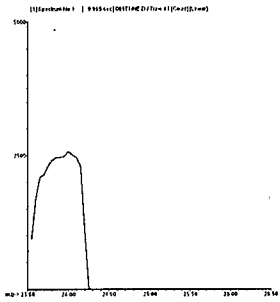
Element	CPS Mean	Rep1	Rep2	Rep3	Rep4	Rep5	%RSD	Required	Flag
7 Li	31005	31284	31177	30938	30660	30966	0.78	5.00	
9 Be	4680	4738	4846	4552	4630	4632	2.43	5.00	
24 Mg	29956	30311	29975	29898	29593	30003	0.86	5.00	
59 Co	162296	163275	162026	162588	161906	161683	0.39	5.00	
115 In	2336995	2332098	2340064	2351138	2309154	2352520	0.76	5.00	
208 Pb	163312	165953	164957	161592	162025	162032	1.22	5.00	
238 U	308908	314189	311125	309217	306815	303191	1.35	5.00	



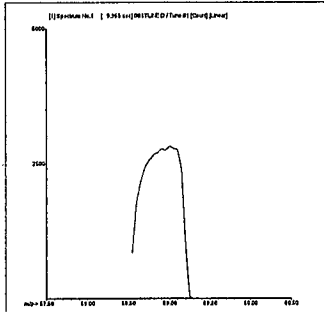
7 Li  
 Mass Calib.  
 Actual: 7.00  
 Required: 6.90 - 7.10  
 Flag:  
 Peak Width  
 Actual: 0.60  
 Required: 0.90  
 Flag:



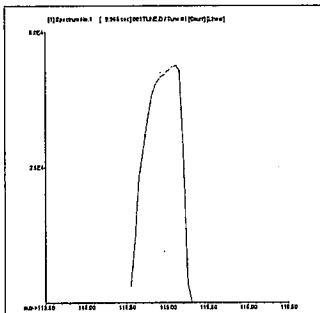
9 Be  
 Mass Calib.  
 Actual: 9.00  
 Required: 8.90 - 9.10  
 Flag:  
 Peak Width  
 Actual: 0.60  
 Required: 0.90  
 Flag:



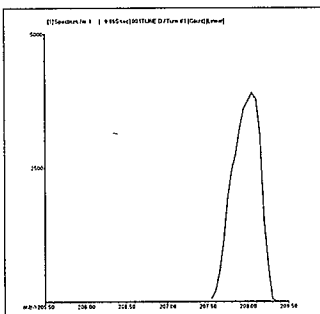
24 Mg  
 Mass Calib.  
     Actual: 23.95  
     Required: 23.90 - 24.10  
     Flag:  
 Peak Width  
     Actual: 0.65  
     Required: 0.90  
     Flag:



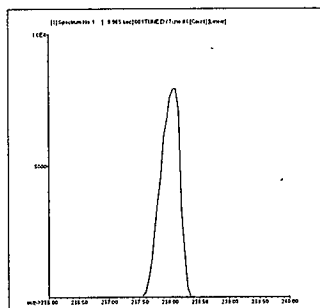
59 Co  
 Mass Calib.  
     Actual: 59.00  
     Required: 58.90 - 59.10  
     Flag:  
 Peak Width  
     Actual: 0.65  
     Required: 0.90  
     Flag:



115 In  
 Mass Calib.  
     Actual: 115.05  
     Required: 114.90 - 115.10  
     Flag:  
 Peak Width  
     Actual: 0.60  
     Required: 0.90  
     Flag:



208 Pb  
 Mass Calib.  
     Actual: 208.00  
     Required: 207.90 - 208.10  
     Flag:  
 Peak Width  
     Actual: 0.60  
     Required: 0.90  
     Flag:



238 U  
 Mass Calib.  
     Actual: 238.05  
     Required: 237.90 - 238.10  
     Flag:  
 Peak Width  
     Actual: 0.55  
     Required: 0.90  
     Flag:

Tune Result: Pass