

FIGURE 2 Hydrograph Pairs across the Barrier Wall

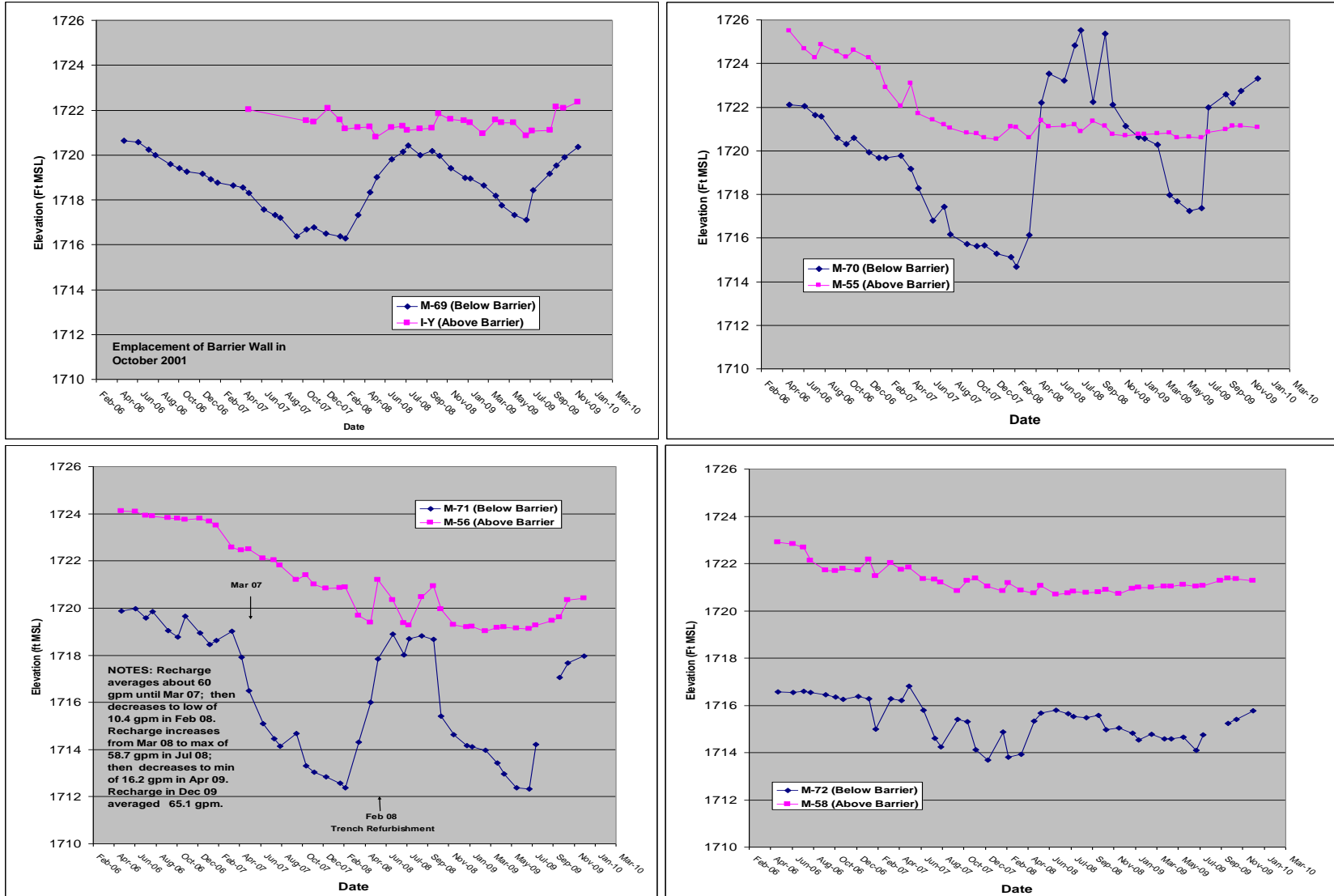


Figure 3: Athens Road Well Field Drawdown
Tronox LLC, Henderson, Nevada

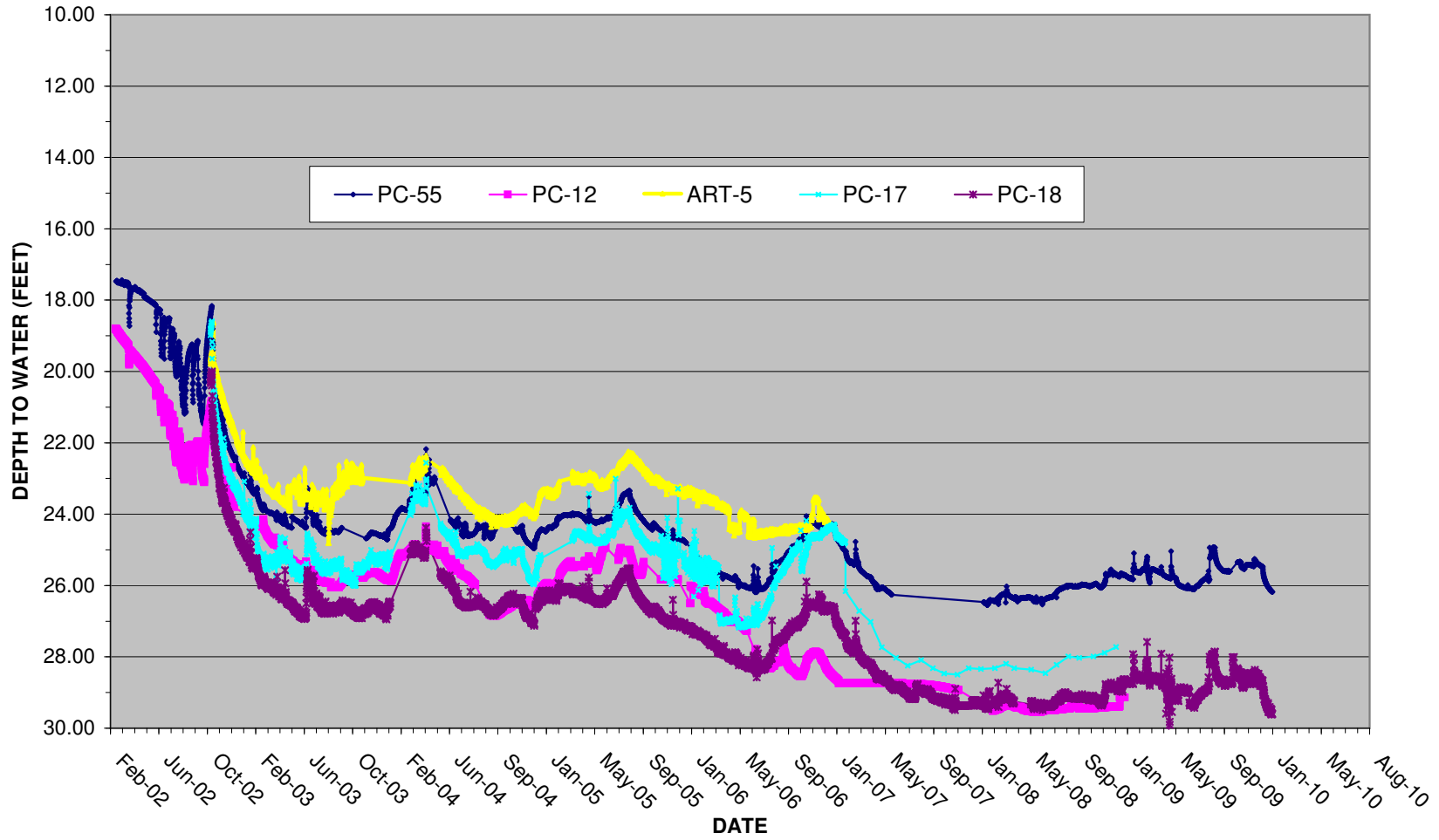
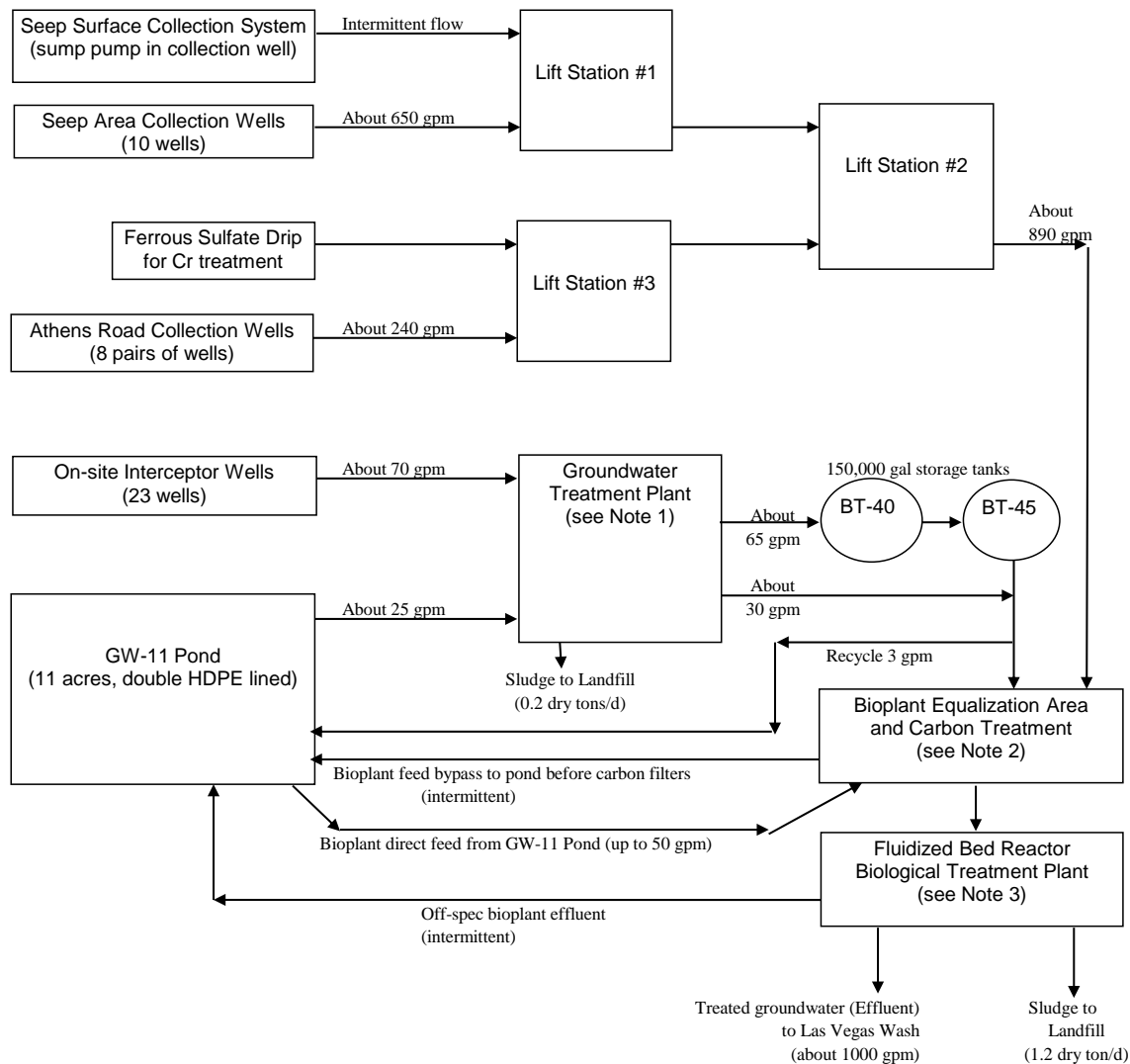


FIGURE 4
Tronox Henderson Groundwater Treatment Flow Diagram

Last modified 12/31/2008



Notes:

- 1) Ferrous sulfate added for chromium removal. Clarifier settles solids. Sludge is removed and landfilled.
- 2) Two 12,000 gallon tanks plus three activated carbon vessels to remove organics which could harm bacteria, followed by cartridge filters.
- 3) Five 33,000 gallon primary reactors, four 28,800 gallon secondary reactors, aeration, dissolved air flotation, UV disinfection, two plate and frame filter presses, and a sand filter.
- 4) Bioplant feed is sampled after cartridge filters (note 2) and effluent is sampled at the discharge to Las Vegas Wash.

FIGURE 5
Interceptor Well Field Total Chromium Section Graph

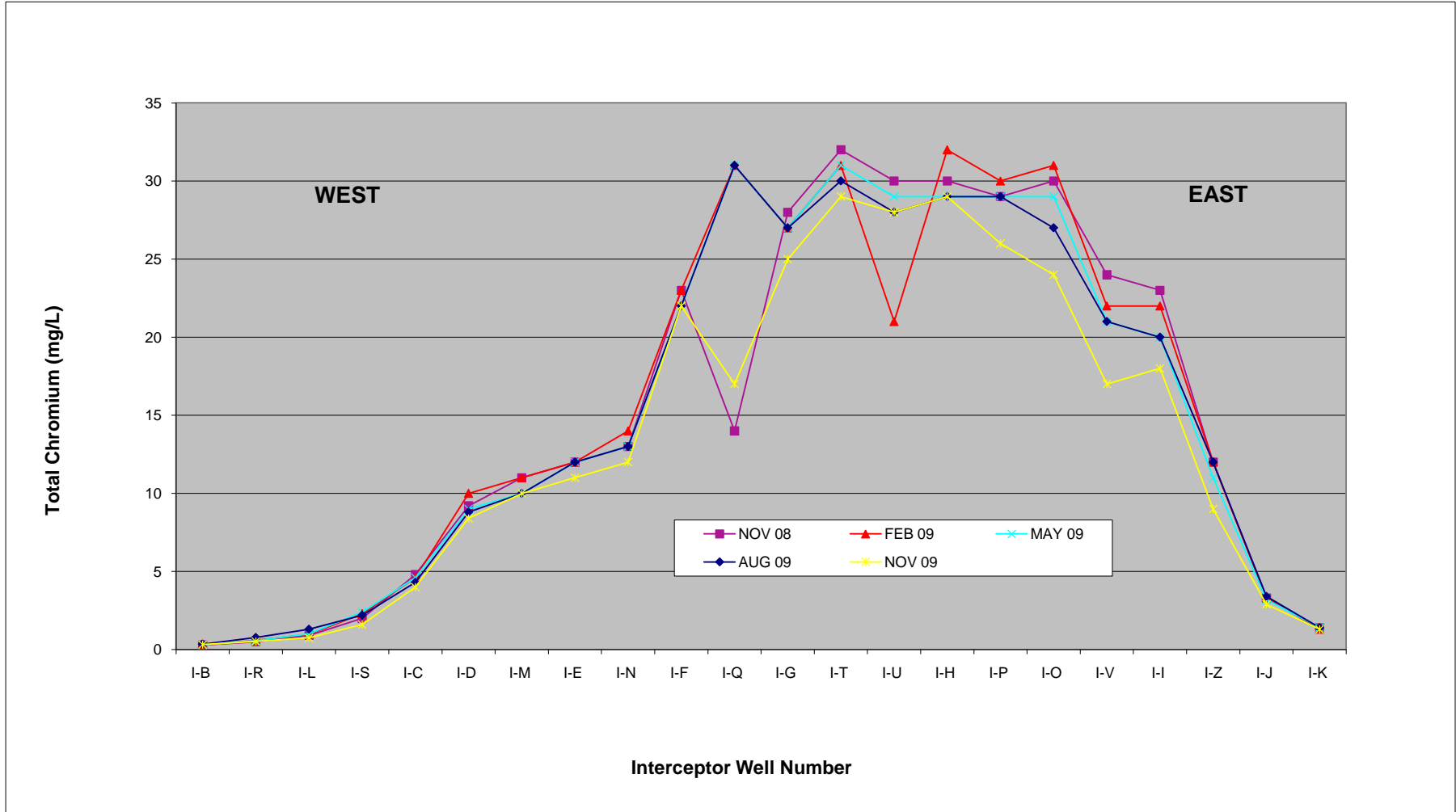


FIGURE 6
Consent Order Appendix J Wells Total Chromium Concentration Trend Graph

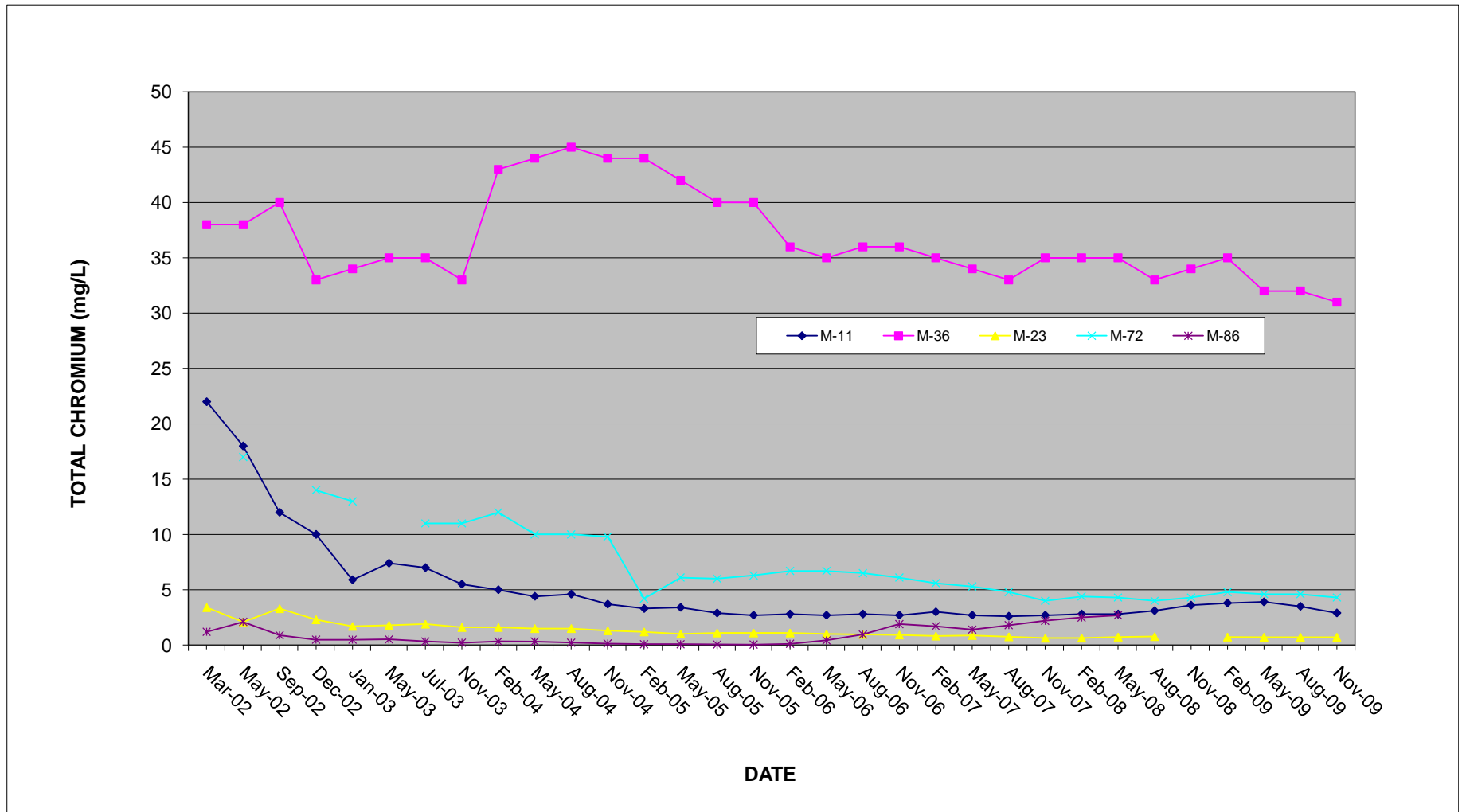


FIGURE 7
Athens Road Well Field Total Chromium Section Graph

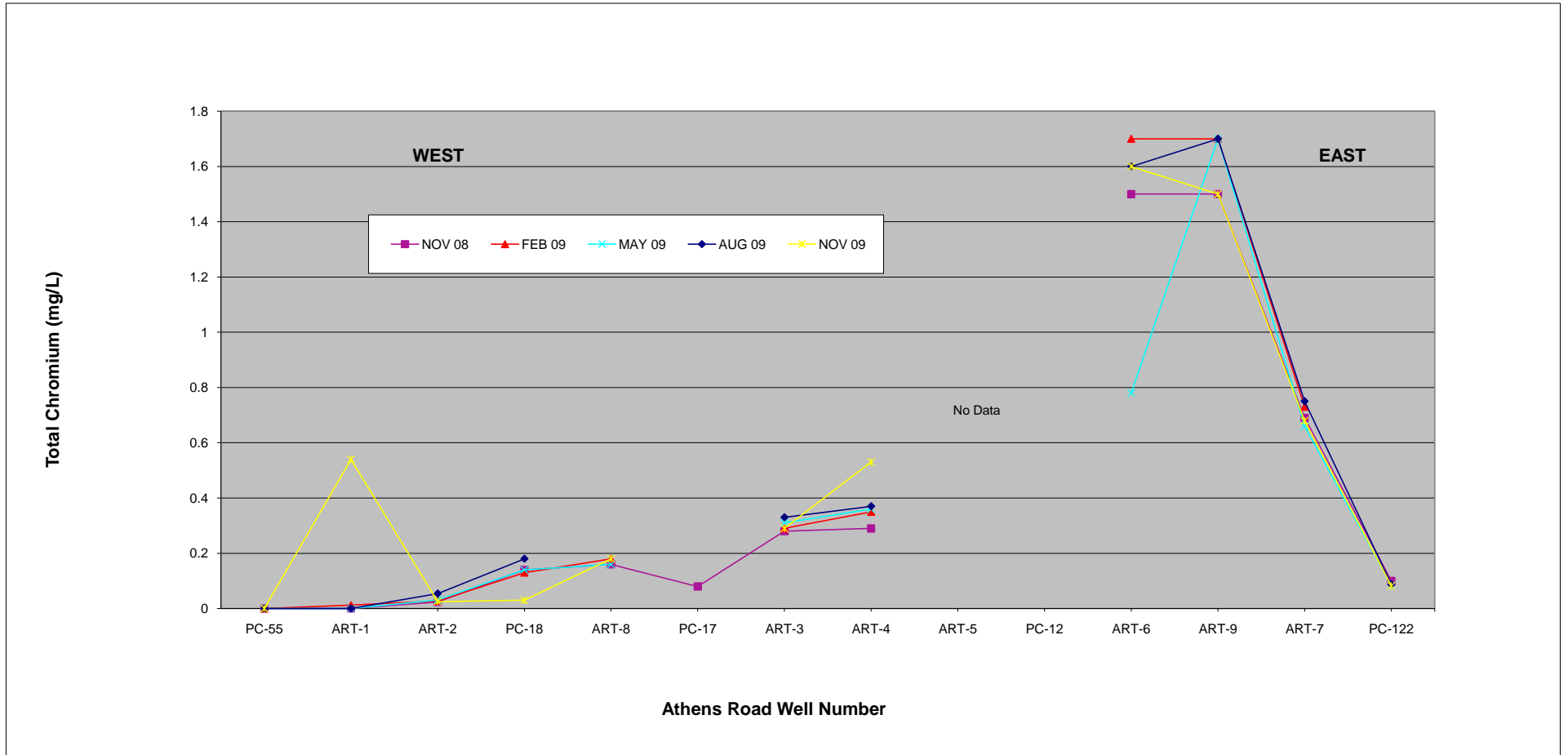


FIGURE 8
Perchlorate Removed from the Environment July to December 2009

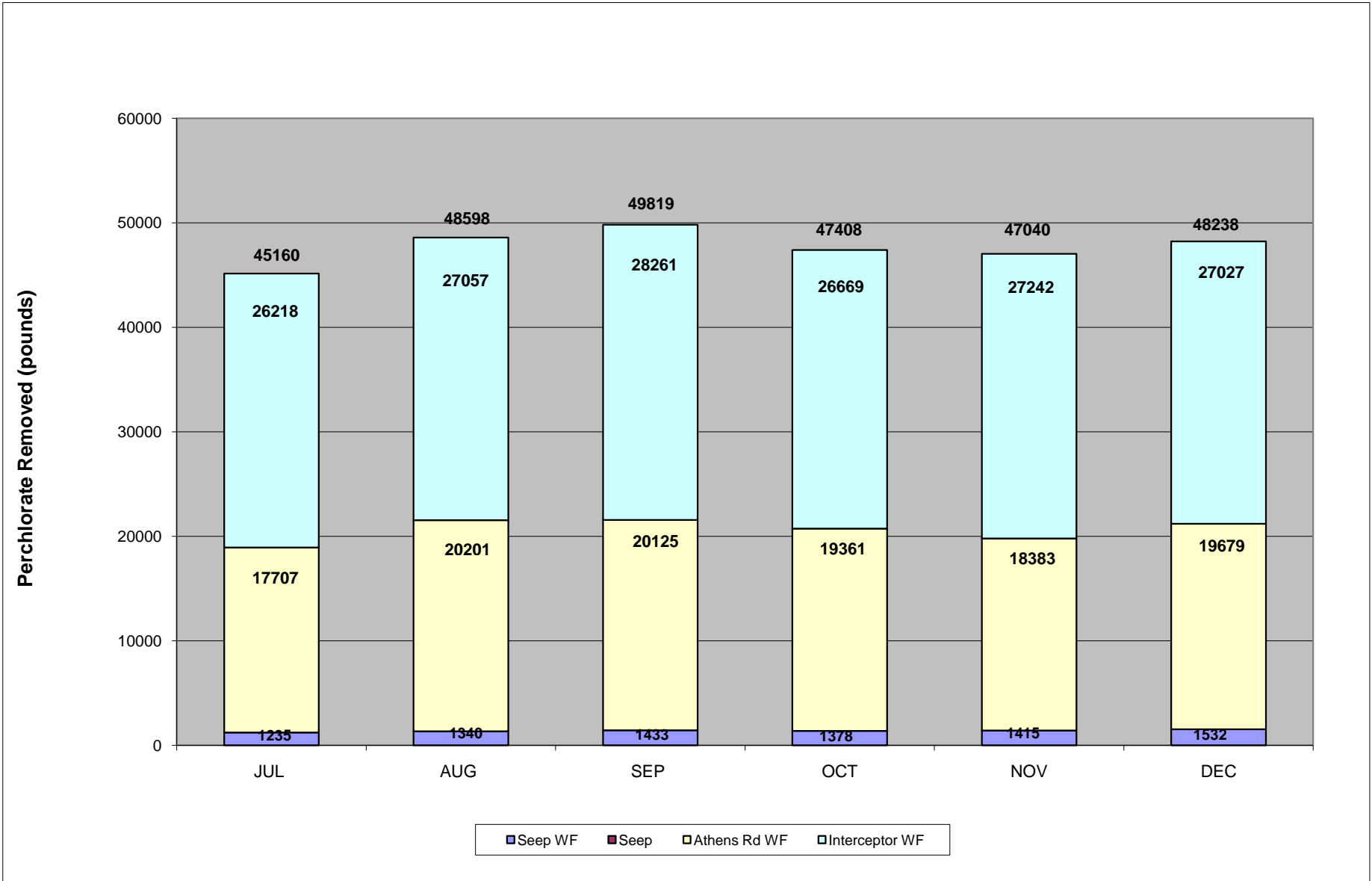


FIGURE 9
Interceptor Well Field Perchlorate Section Graph

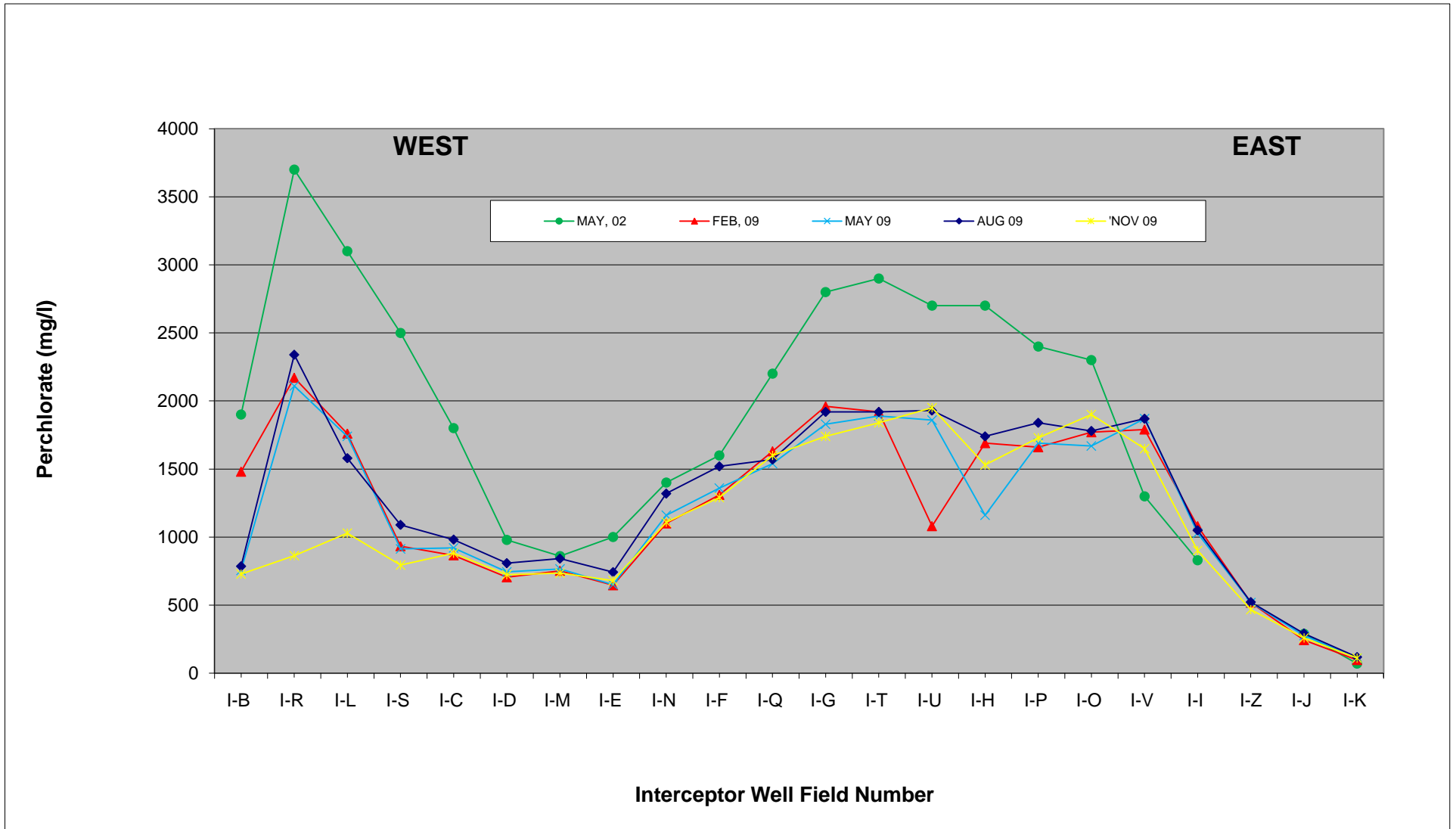


FIGURE 10
Interceptor Well Field Perchlorate Trend Graph

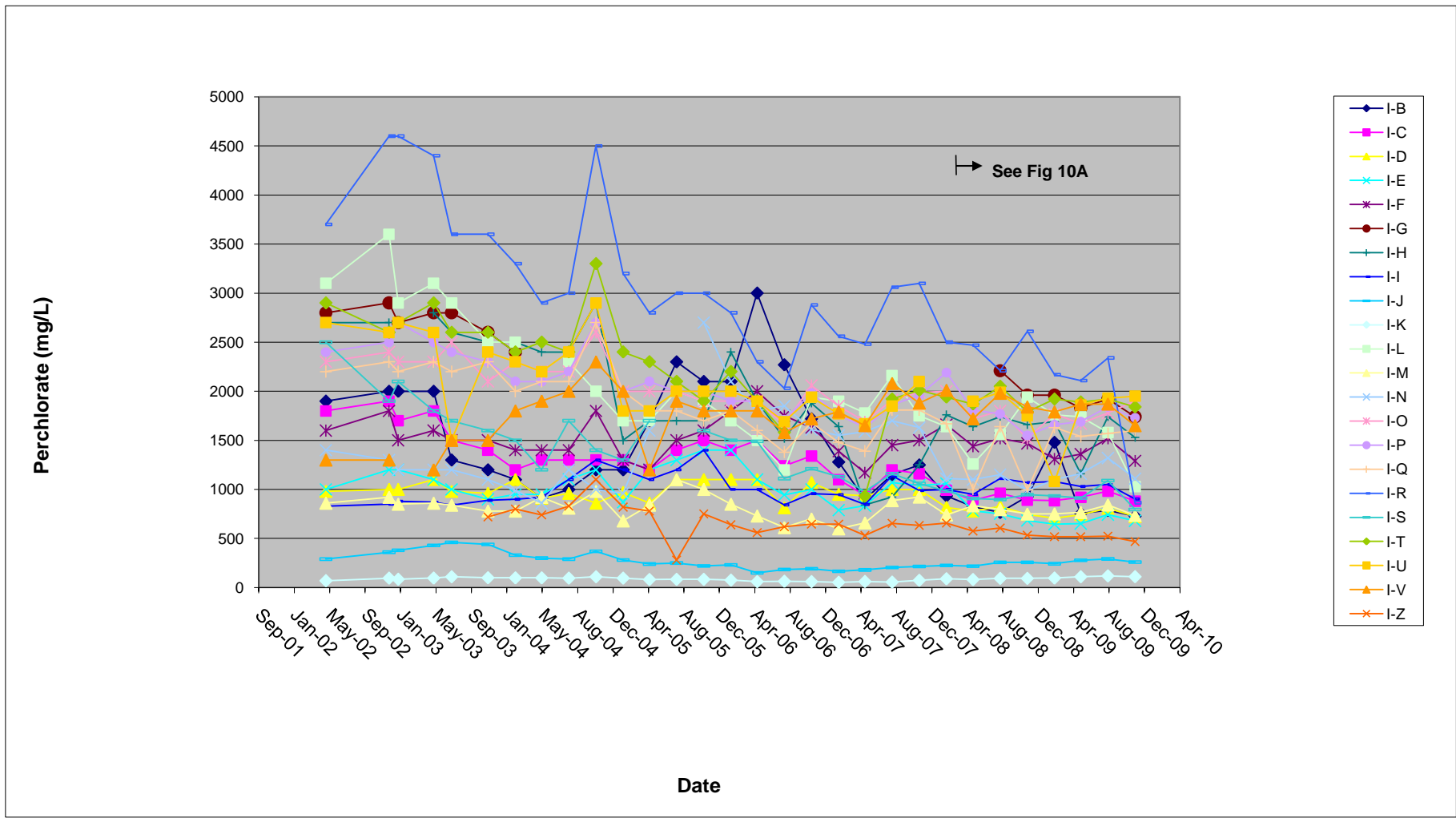


FIGURE 10A
Interceptor Well Field Perchlorate Trend Graph, November 2008 – November 2009

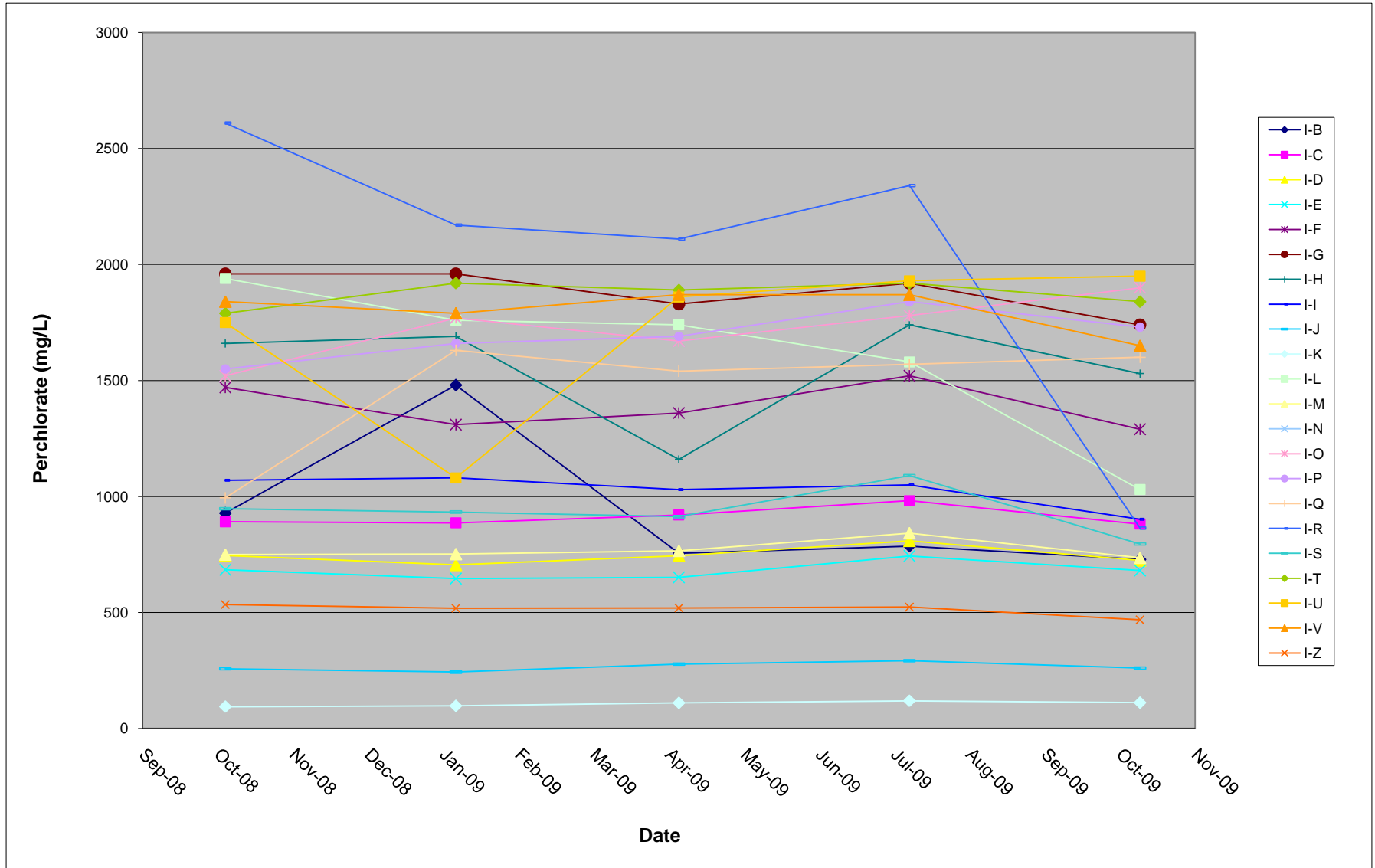


FIGURE 11
Interceptor Well Field Total Dissolved Solids Section Graph

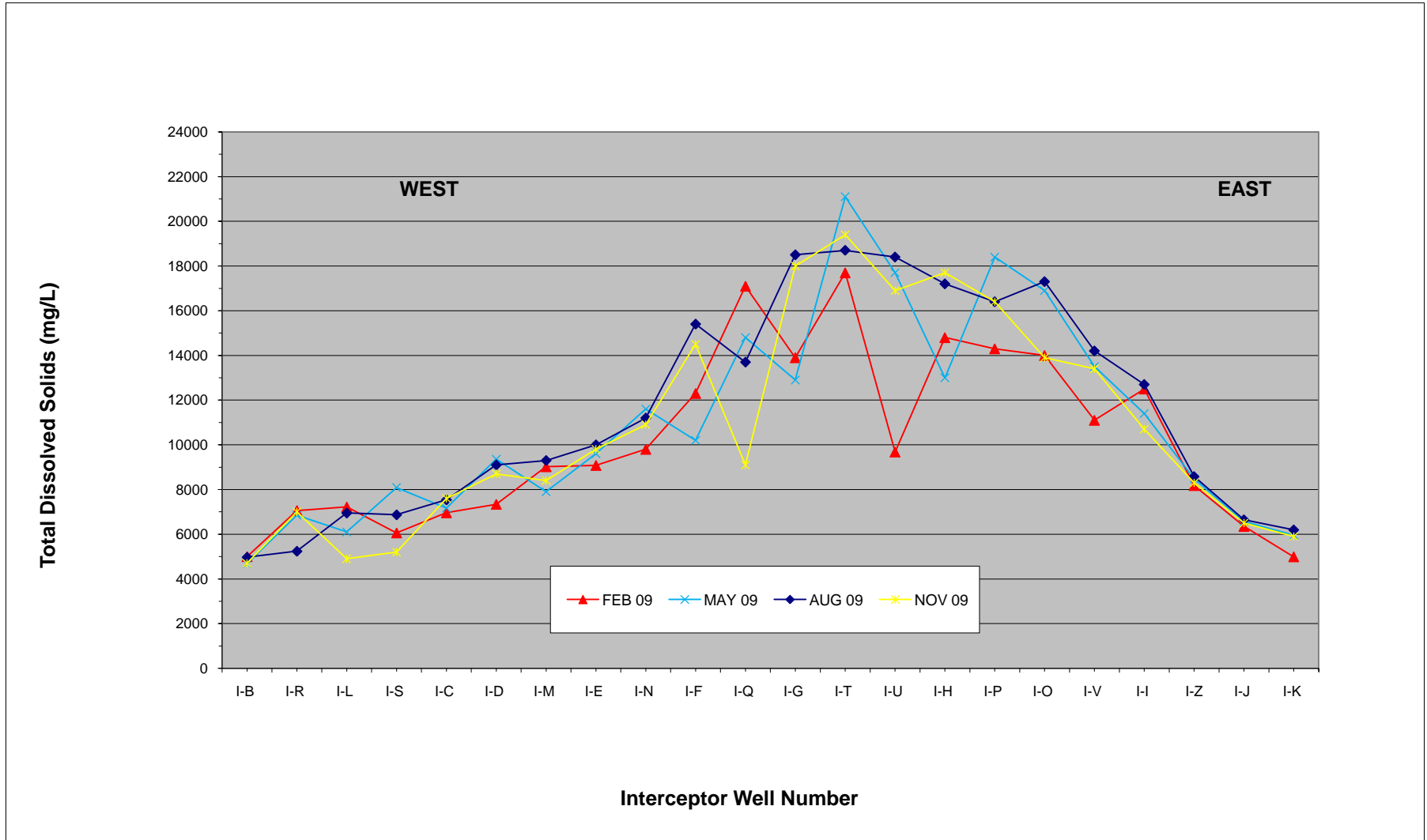


FIGURE 12
Interceptor Well Field Average Perchlorate Concentration and Mass Removed

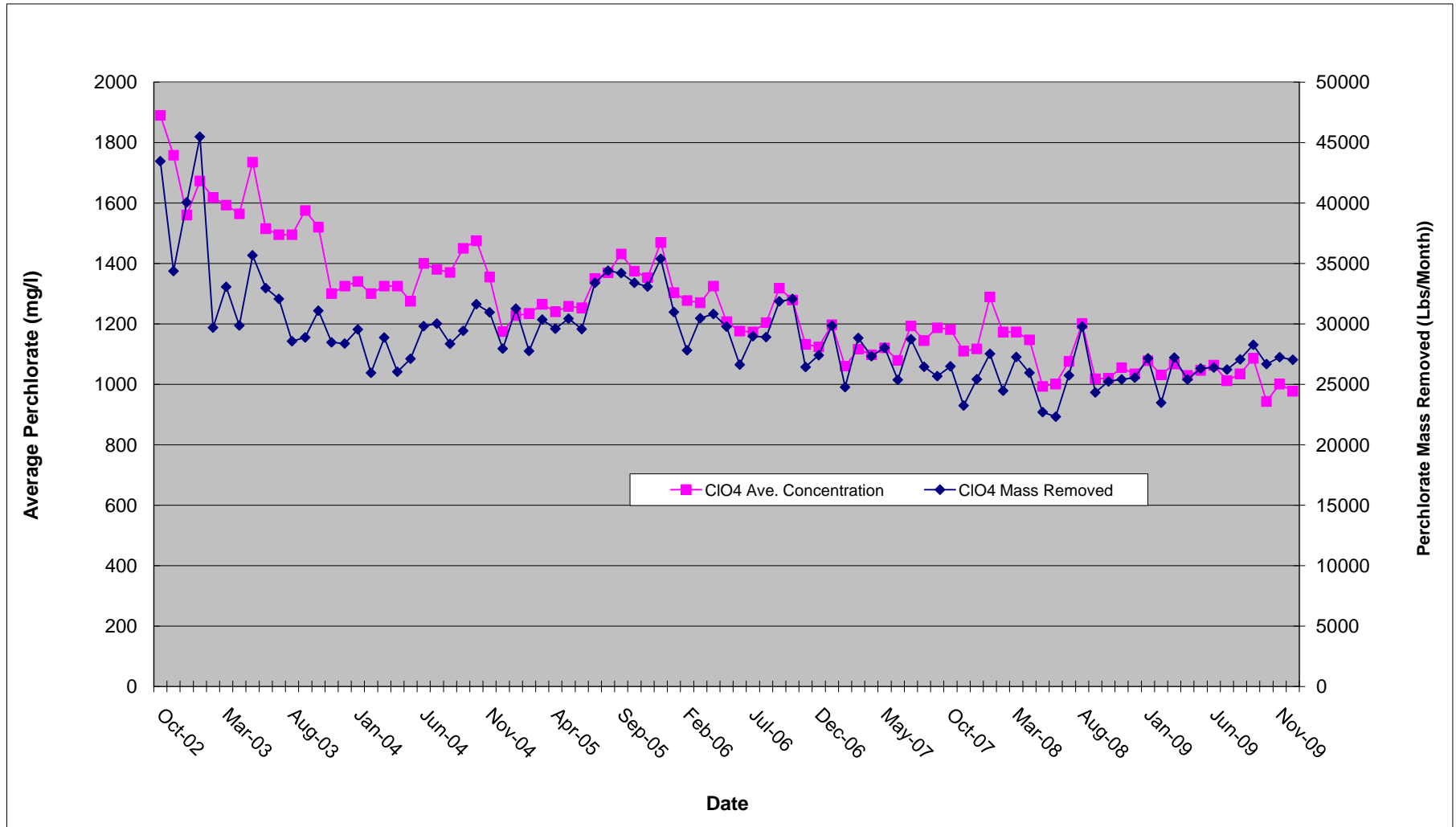


FIGURE 13
Well M-100 Perchlorate vs. Water Elevation Trend Graph

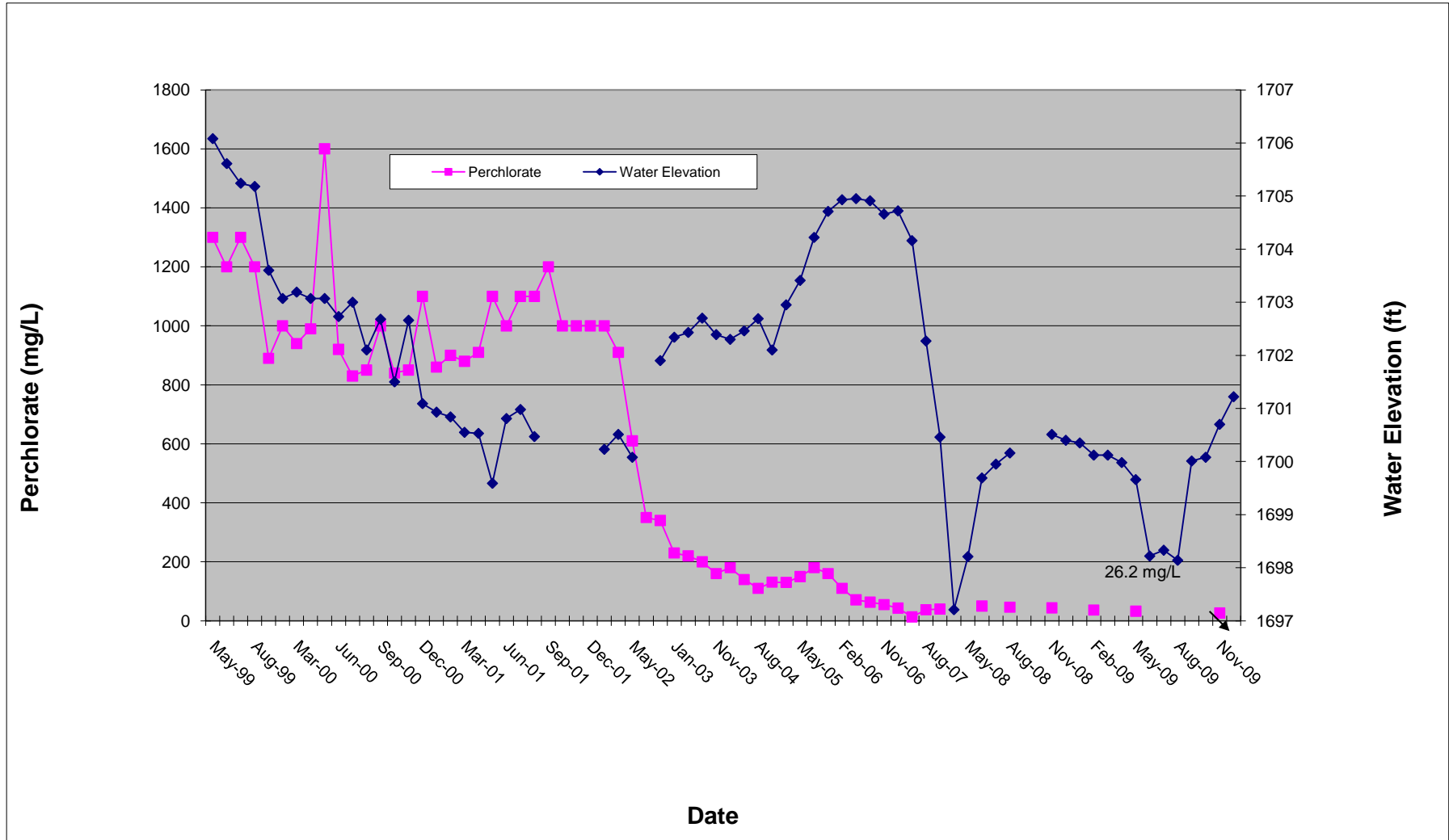


FIGURE 14
Athens Road Well Field Perchlorate Concentration Trend Graph

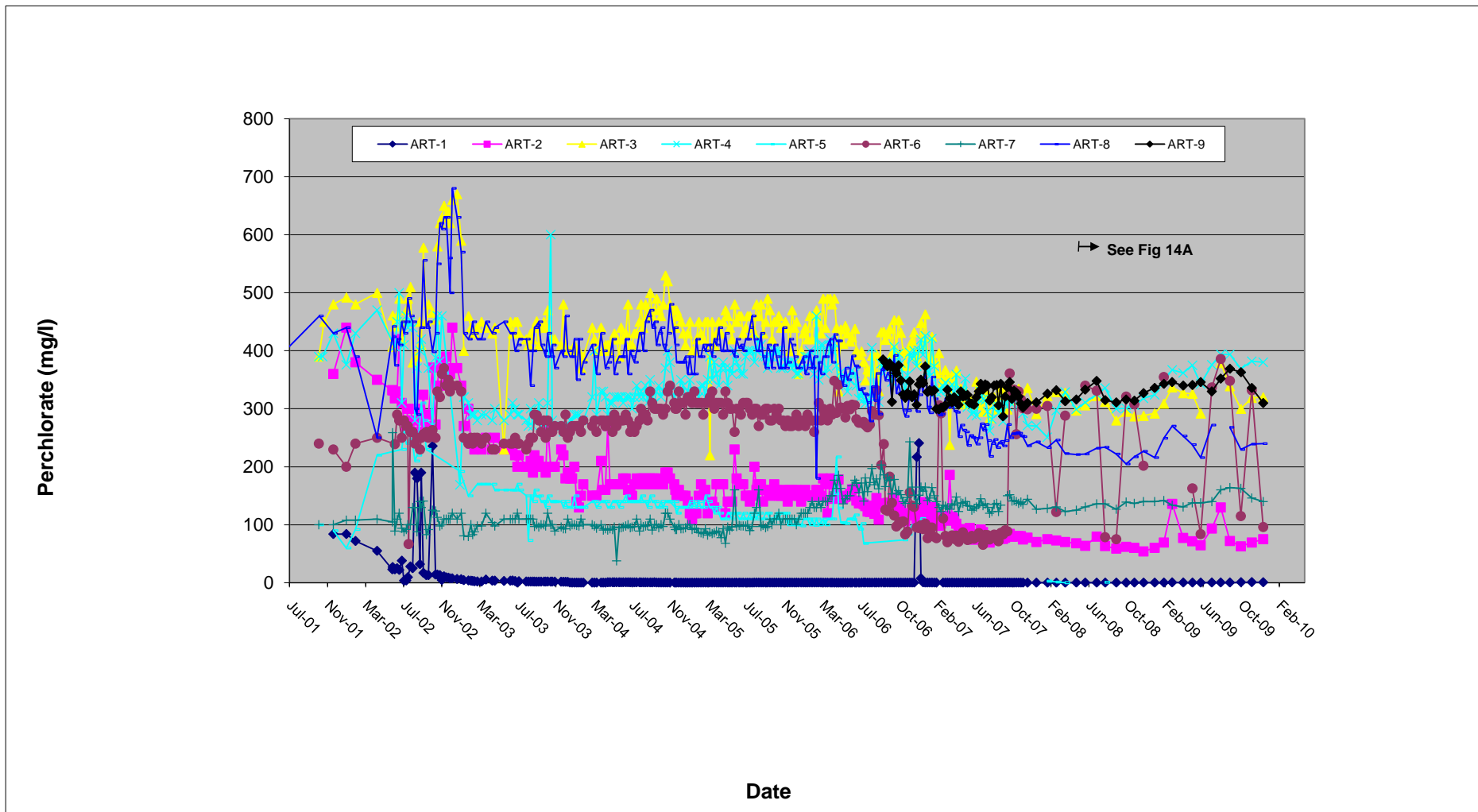


FIGURE 14A
Athens Road Well Field Perchlorate Concentration Trend Graph, November 2008 – December 2009

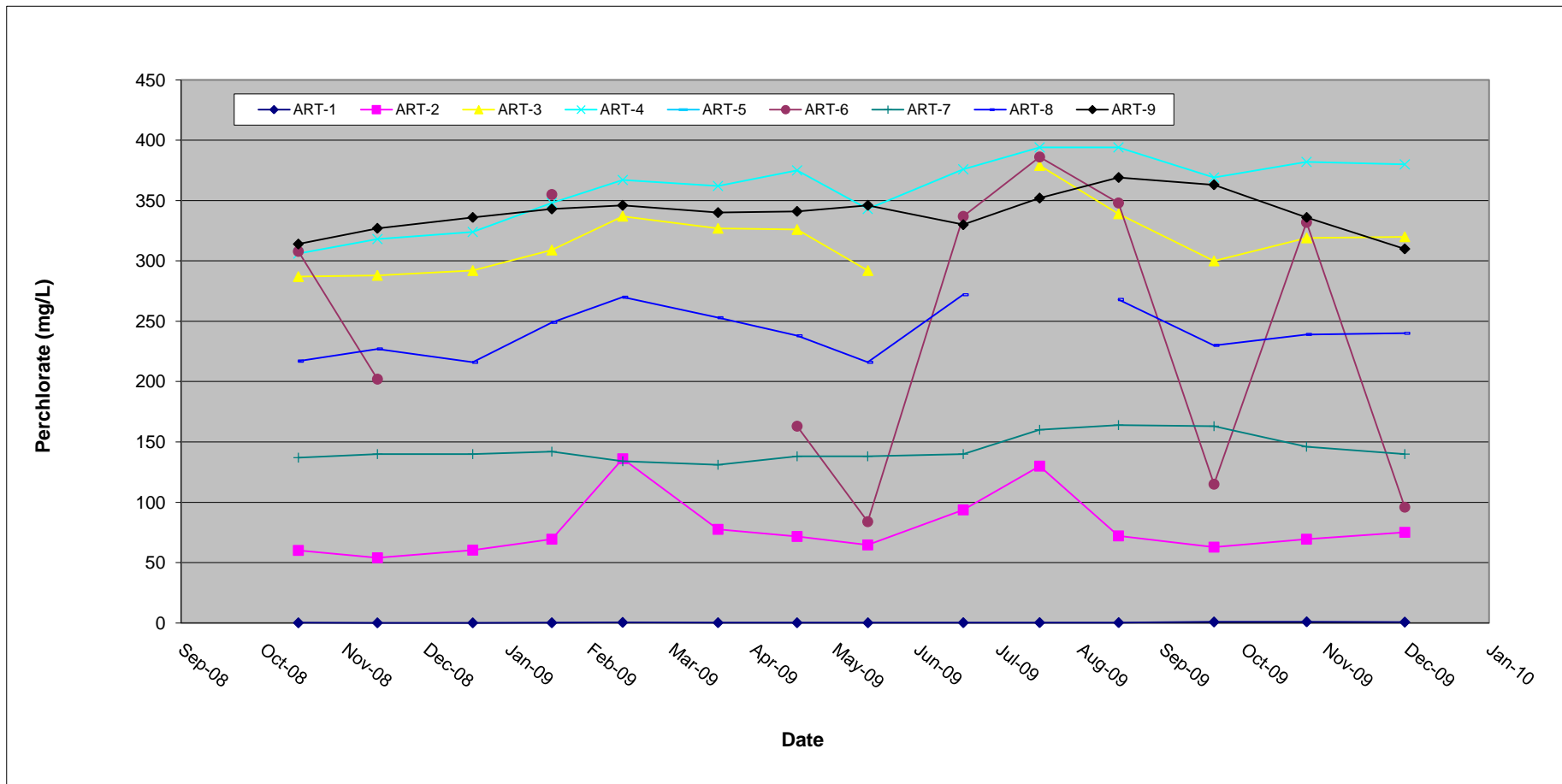


FIGURE 15
Athens Road Well Field Perchlorate Concentration Section Graph

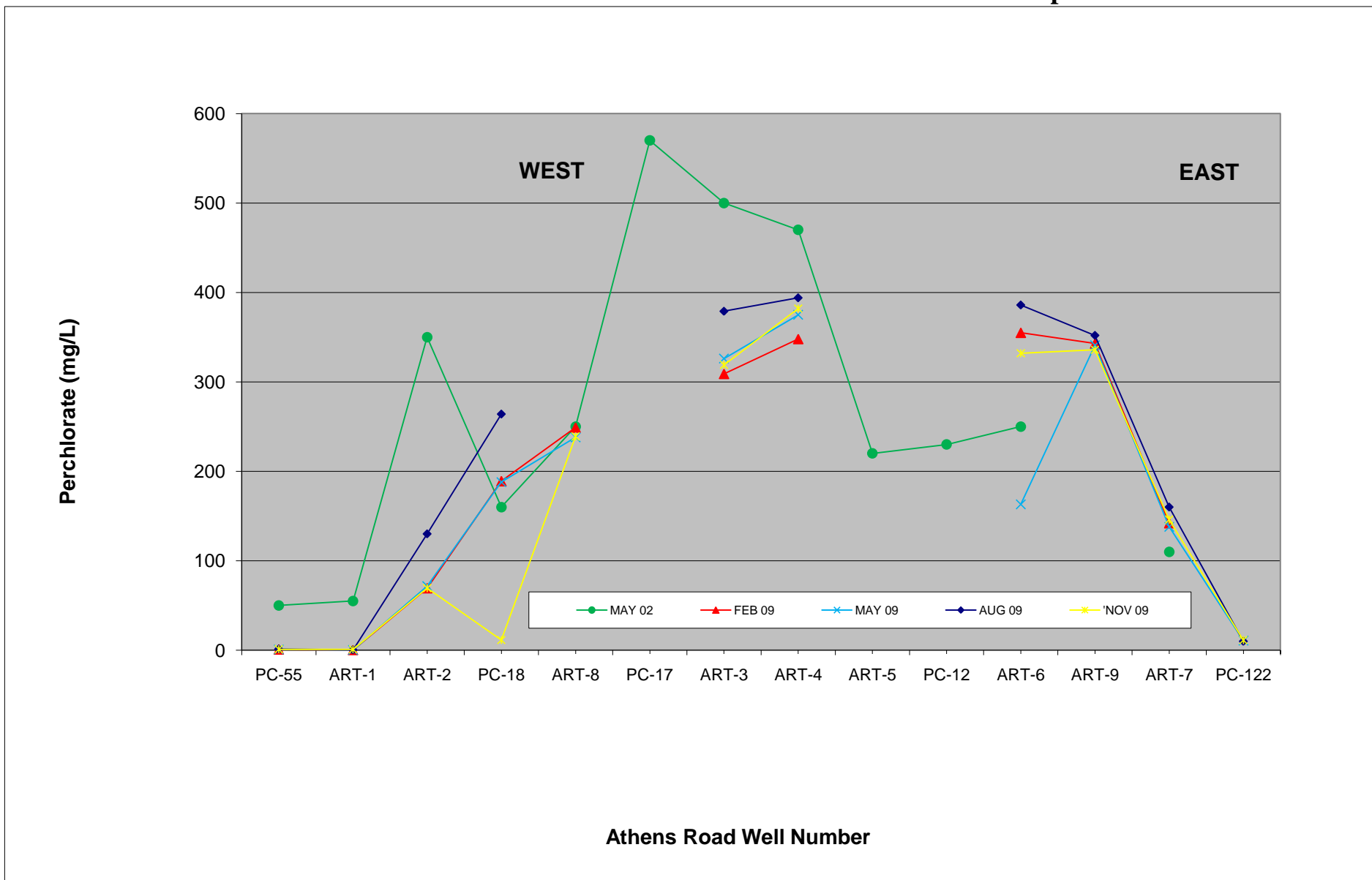


FIGURE 16
Athens Road Well Field Average Perchlorate Concentration in ART-8 and Mass Removed

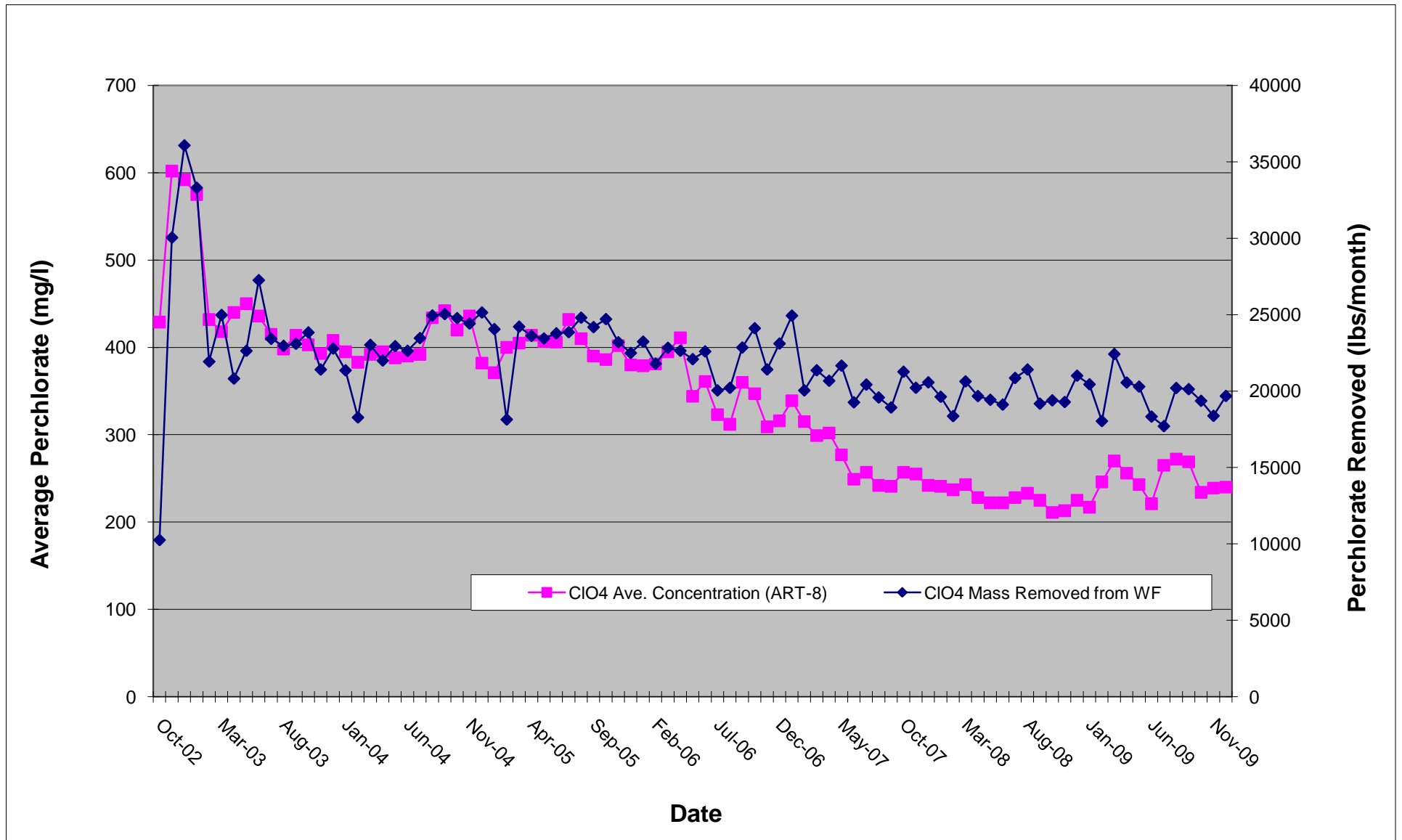


FIGURE 17
Athens Road Well Field Total Dissolved Solids Section Graph

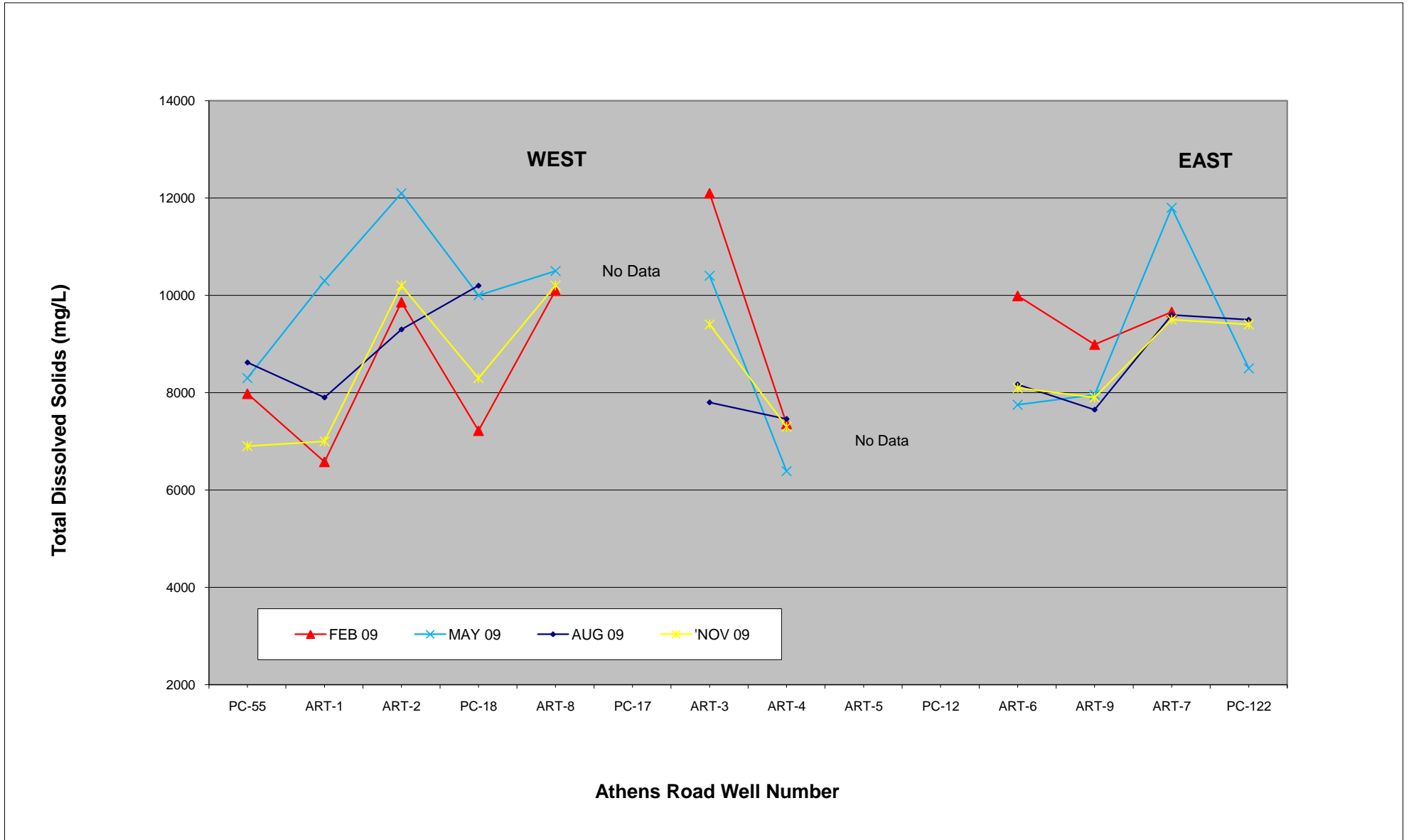


FIGURE 18
Athens Road Piezometer Wells Perchlorate Concentration Trend Graph

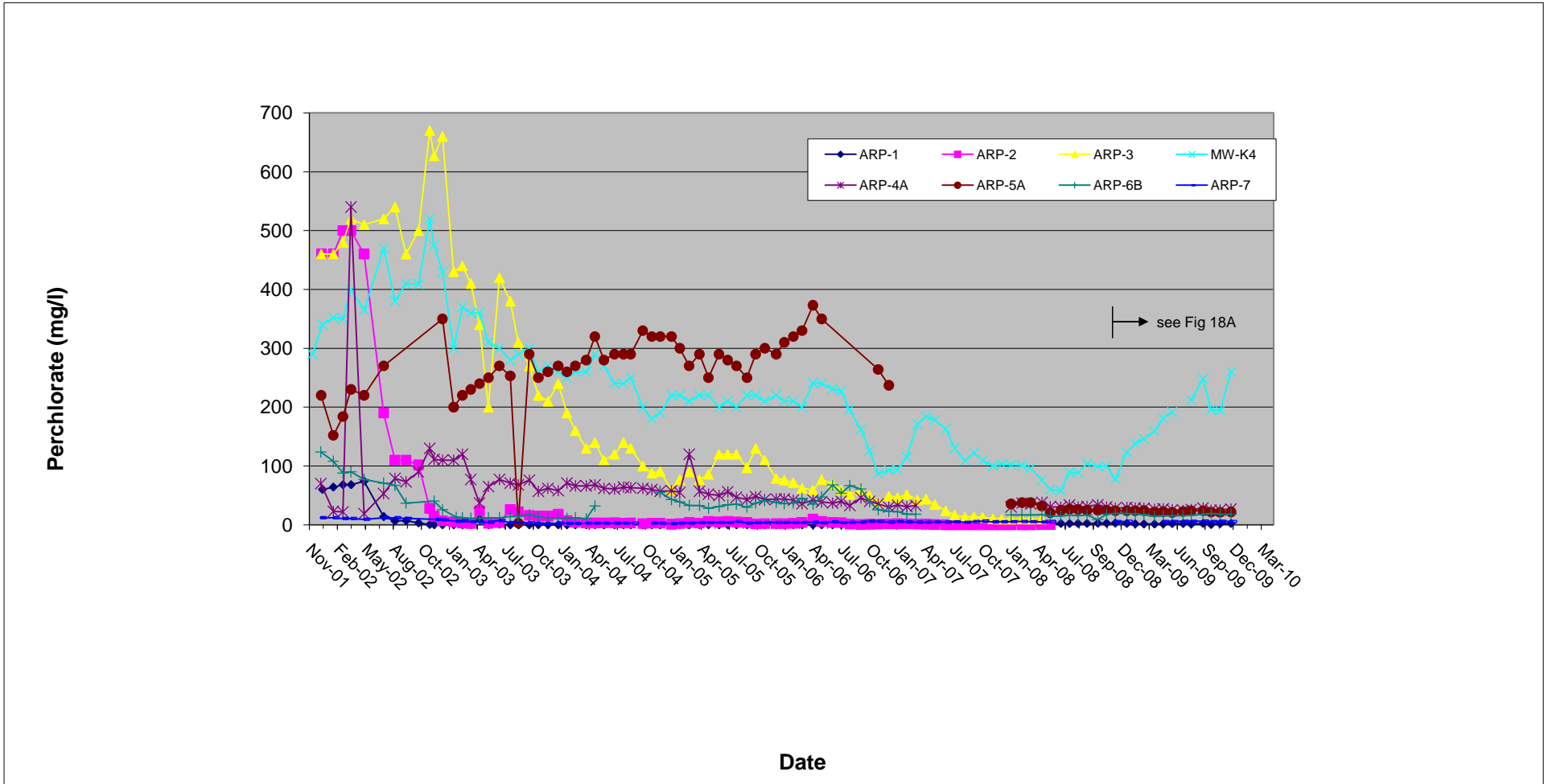


FIGURE 18A
Athens Road Piezometer Wells Perchlorate Concentration Trend Graph, November 2008 – December 2009

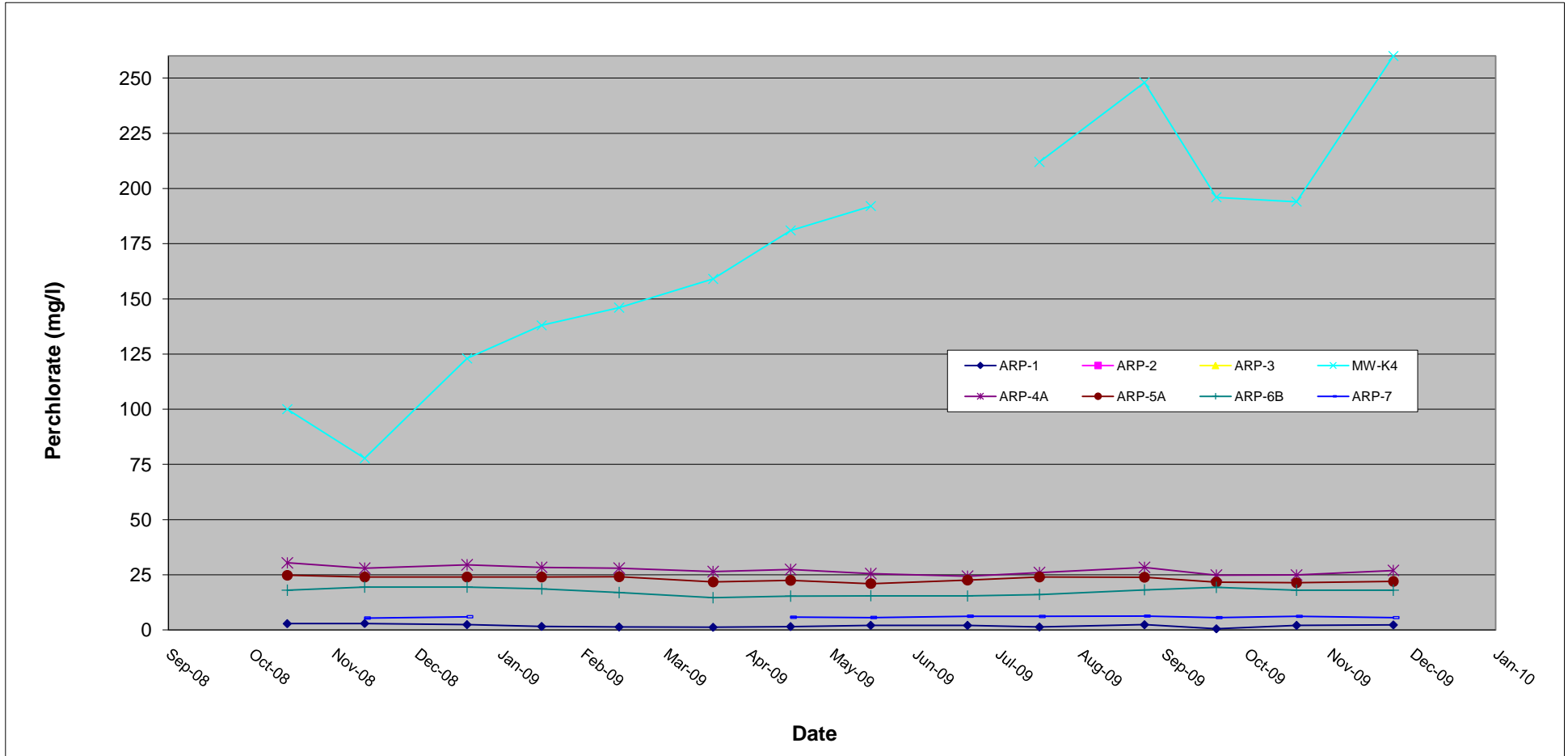


FIGURE 19
Athens Road Piezometer Well Line Perchlorate Concentration Section Graph

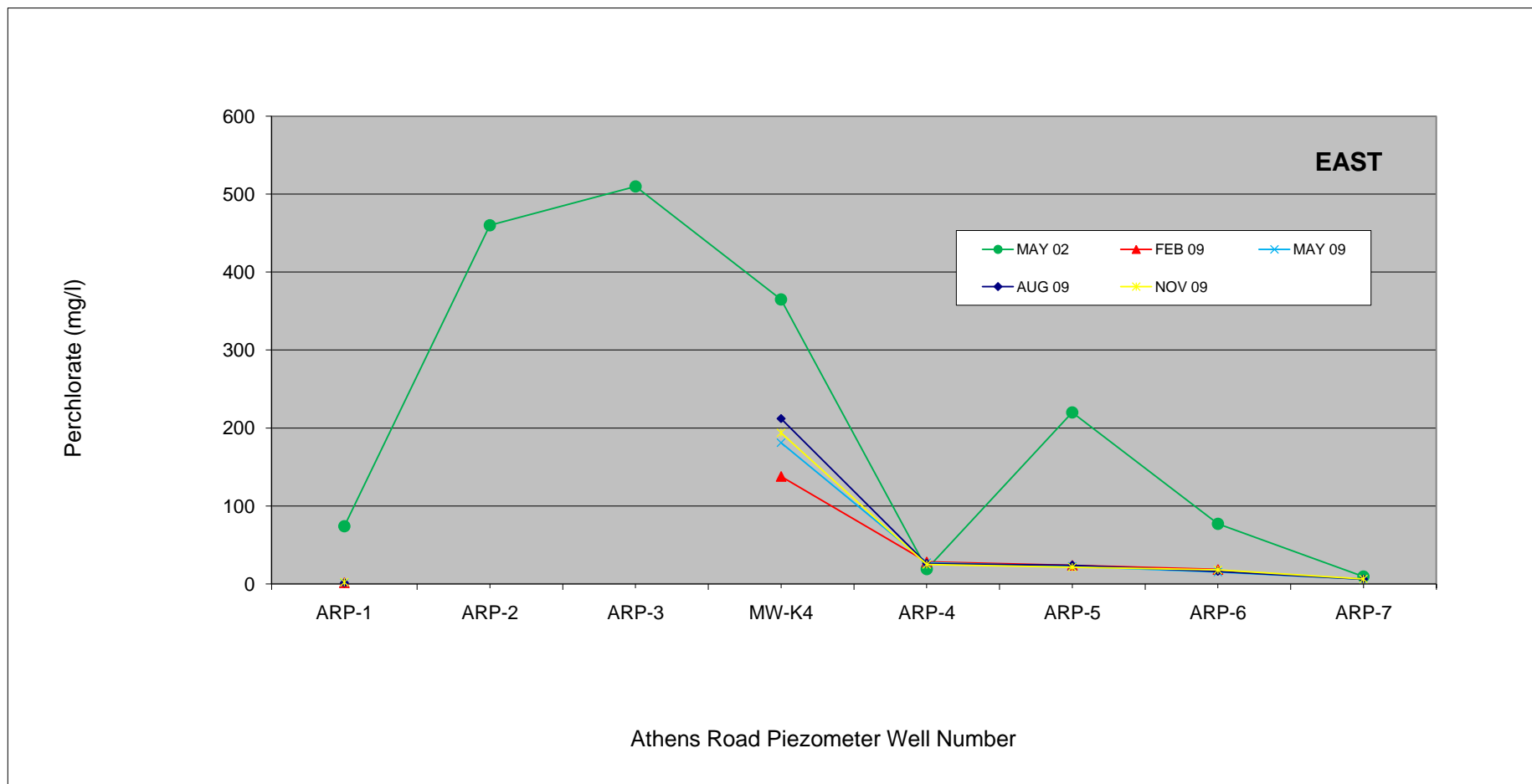


FIGURE 20
City of Henderson WRF Well Line Perchlorate Concentration Trend Graph

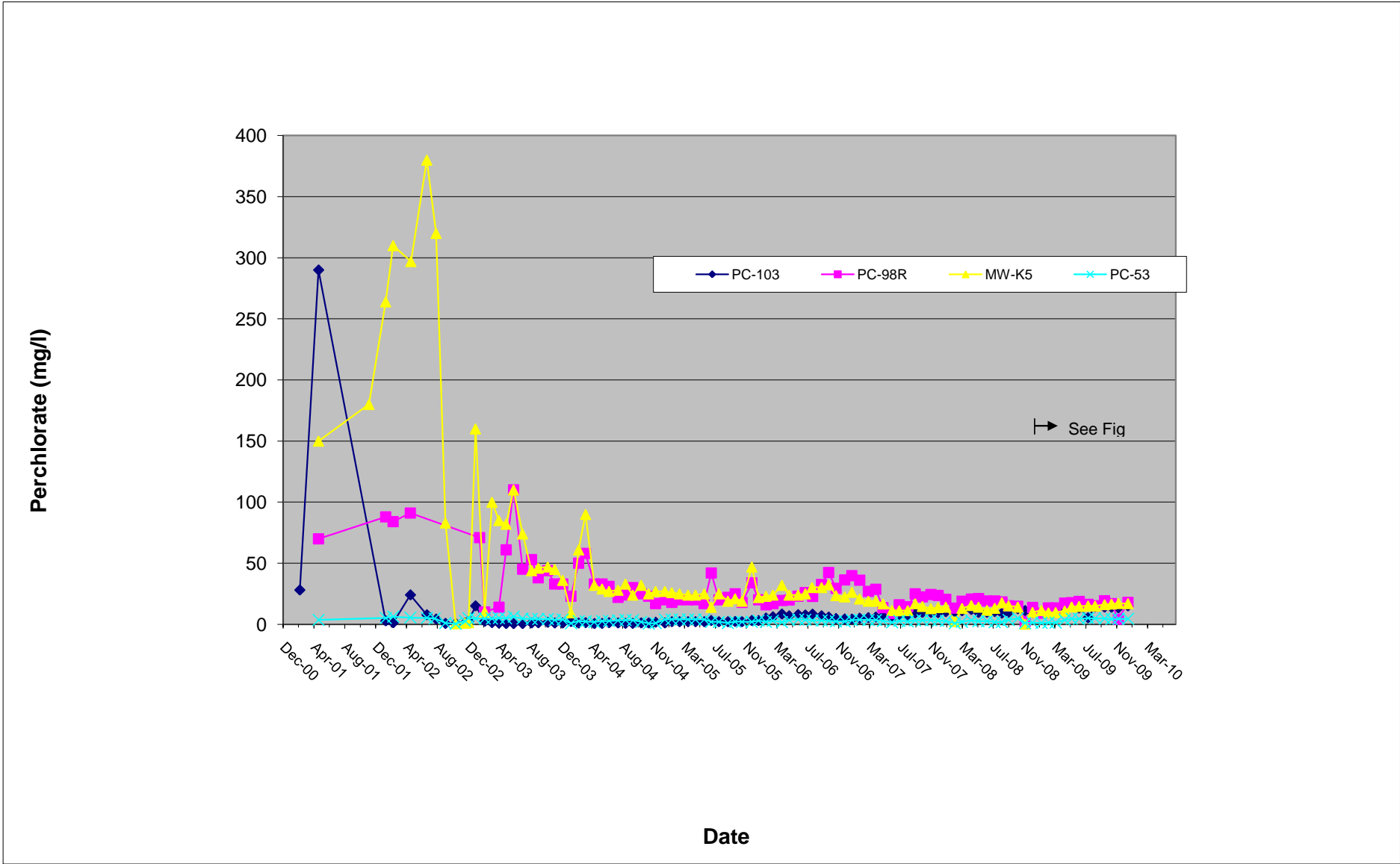


FIGURE 20A

City of Henderson WRF Well Line Perchlorate Concentration Trend Graph, November 2008 – December 2009

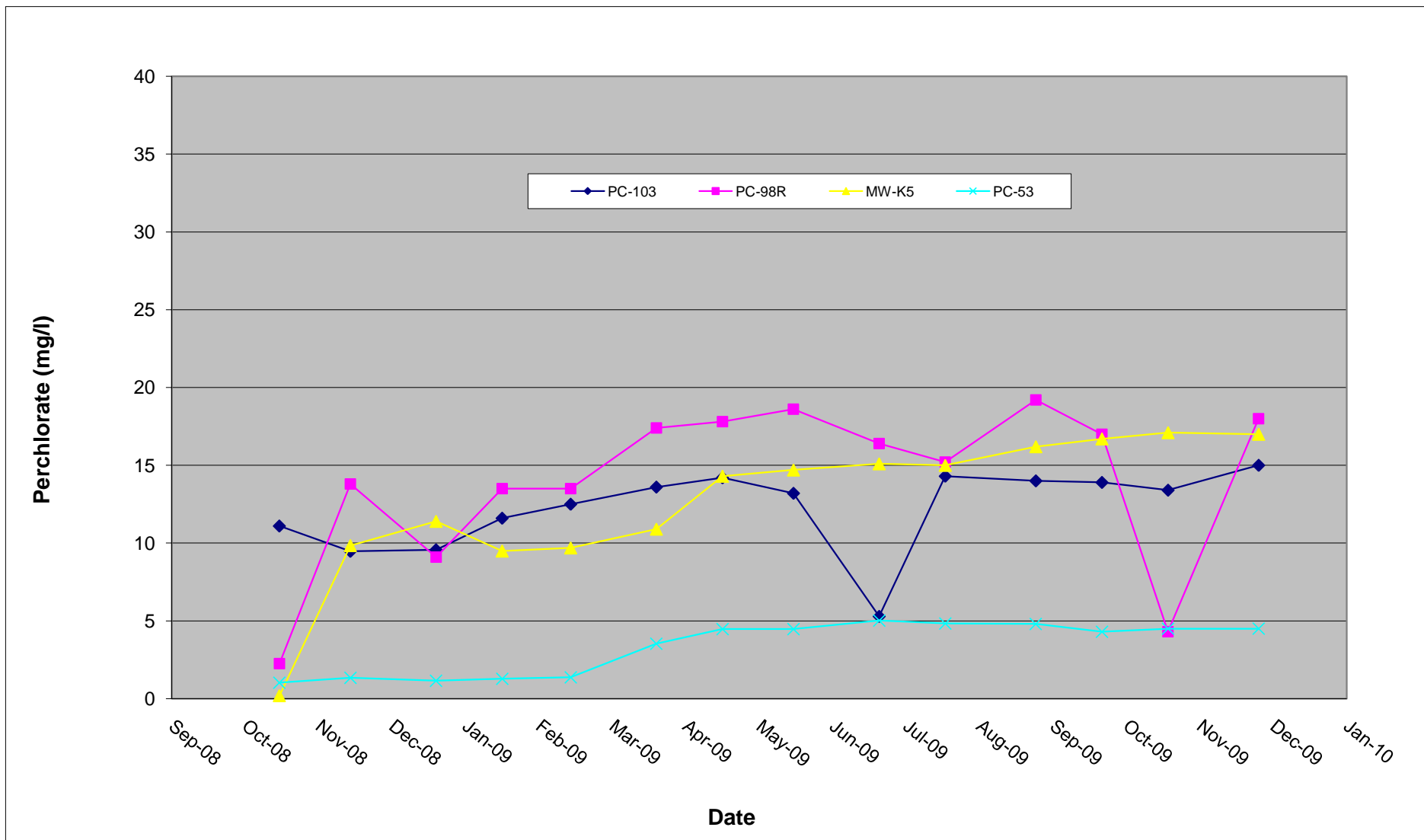


FIGURE 21
Well PC-98R Perchlorate vs. Water Elevation Trend Graph

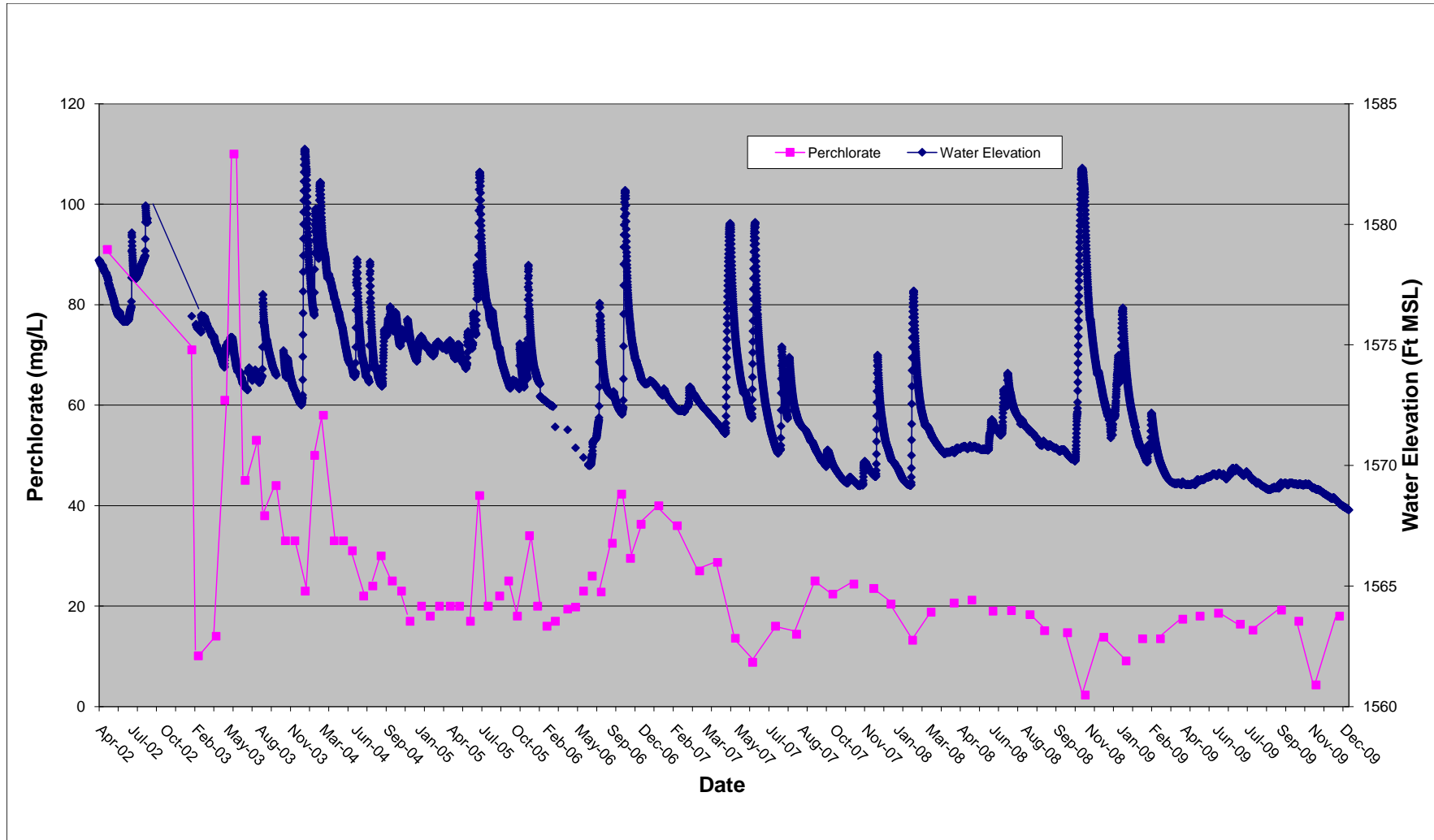


FIGURE 22
Lower Ponds Well Line Perchlorate Concentration Trend Graph

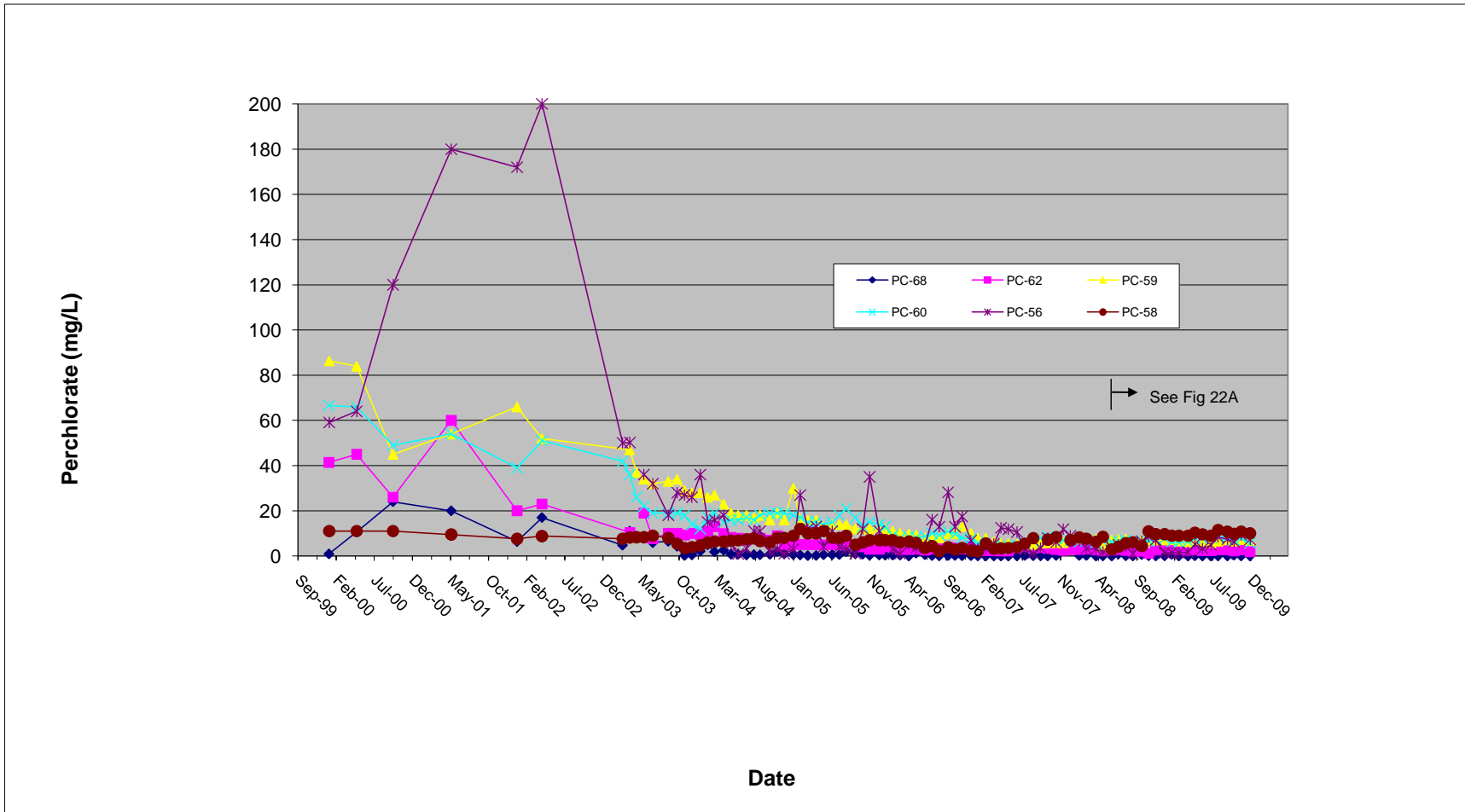


FIGURE 22A
Lower Ponds Well Line Perchlorate Concentration Trend Graph, November 2008 – December 2009

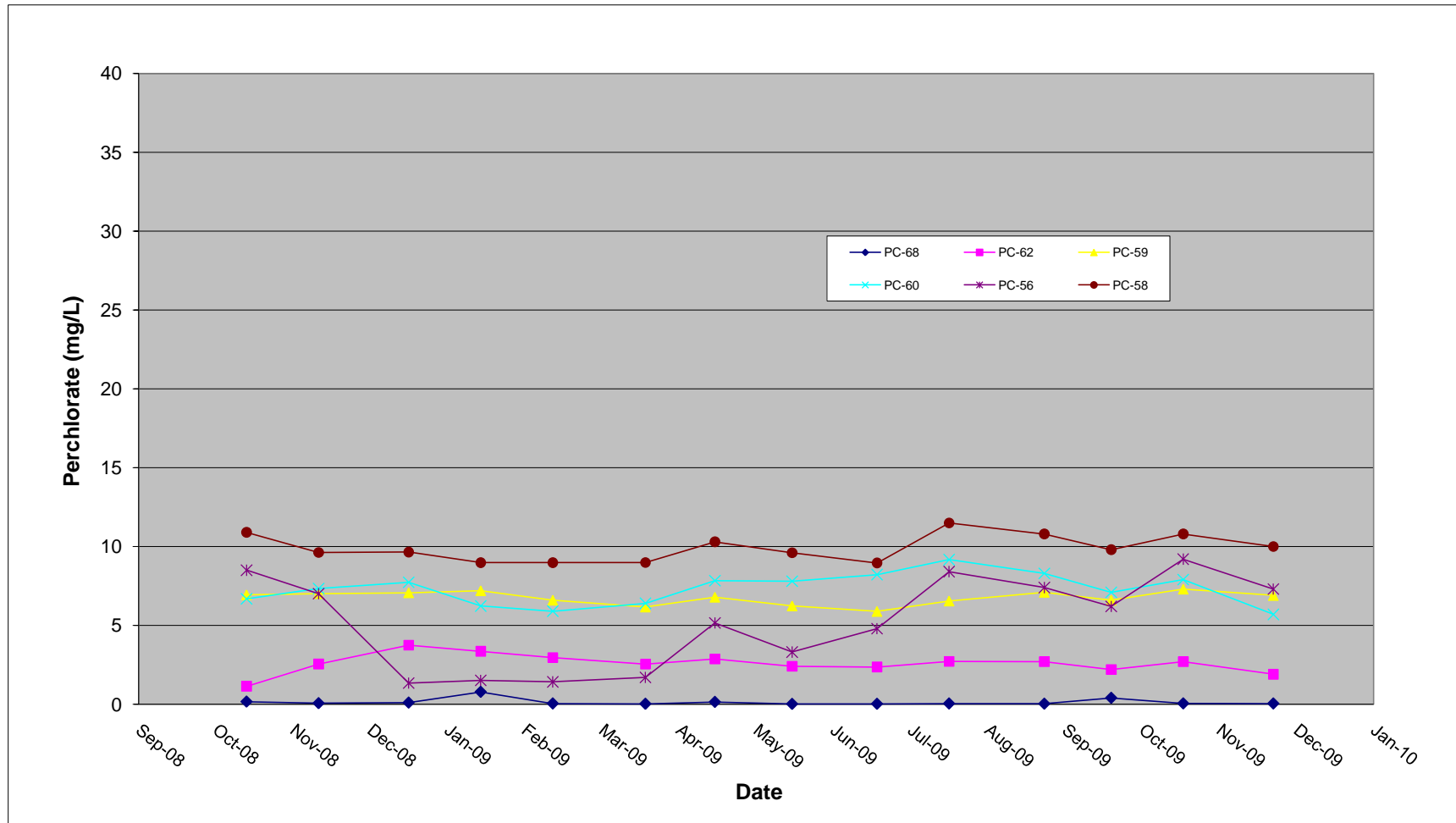


FIGURE 23
Lower Ponds Well Line Perchlorate Concentration Section Graph

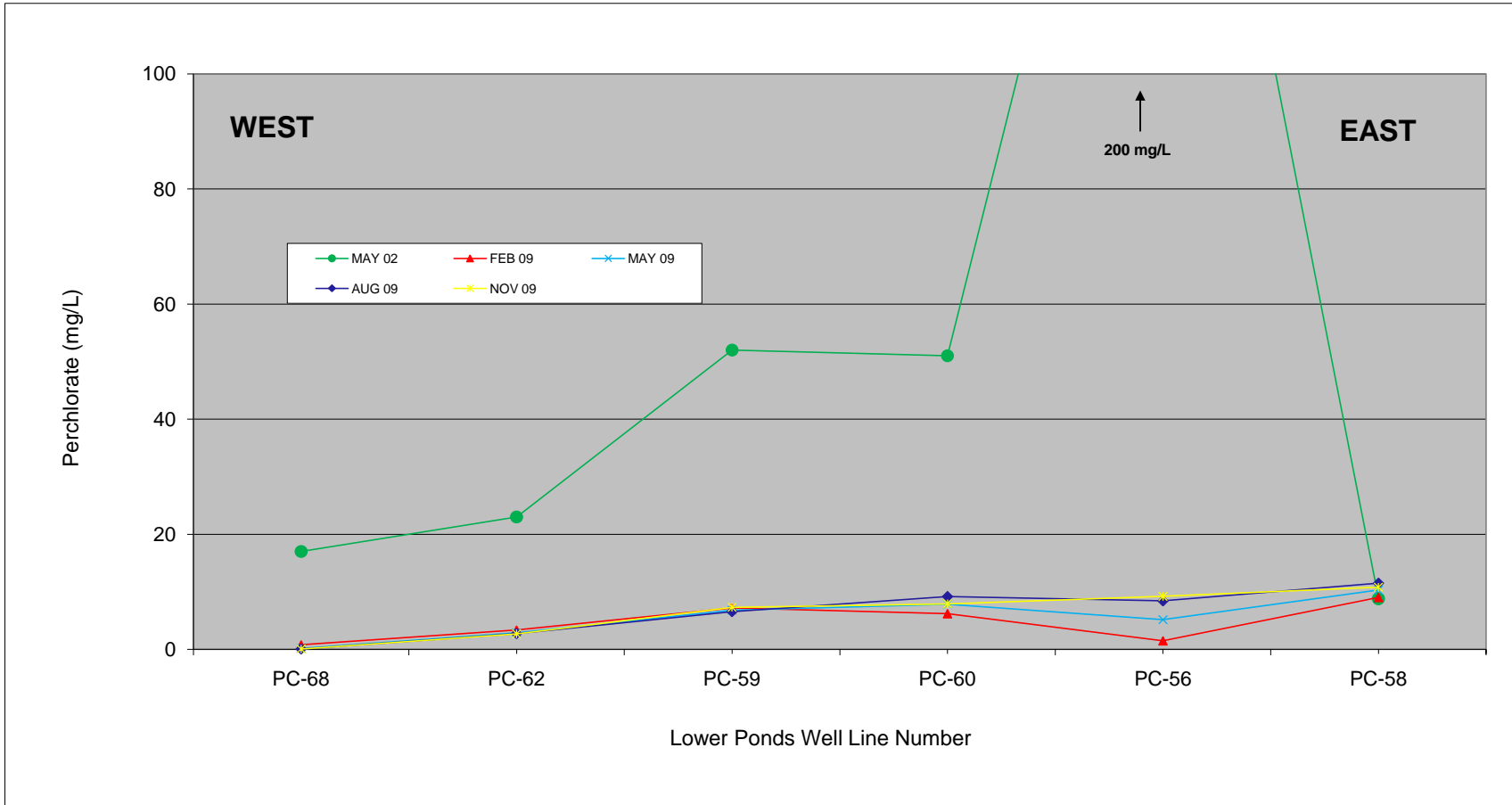


FIGURE 24
Seep Well Field Perchlorate Concentration Trend Graph

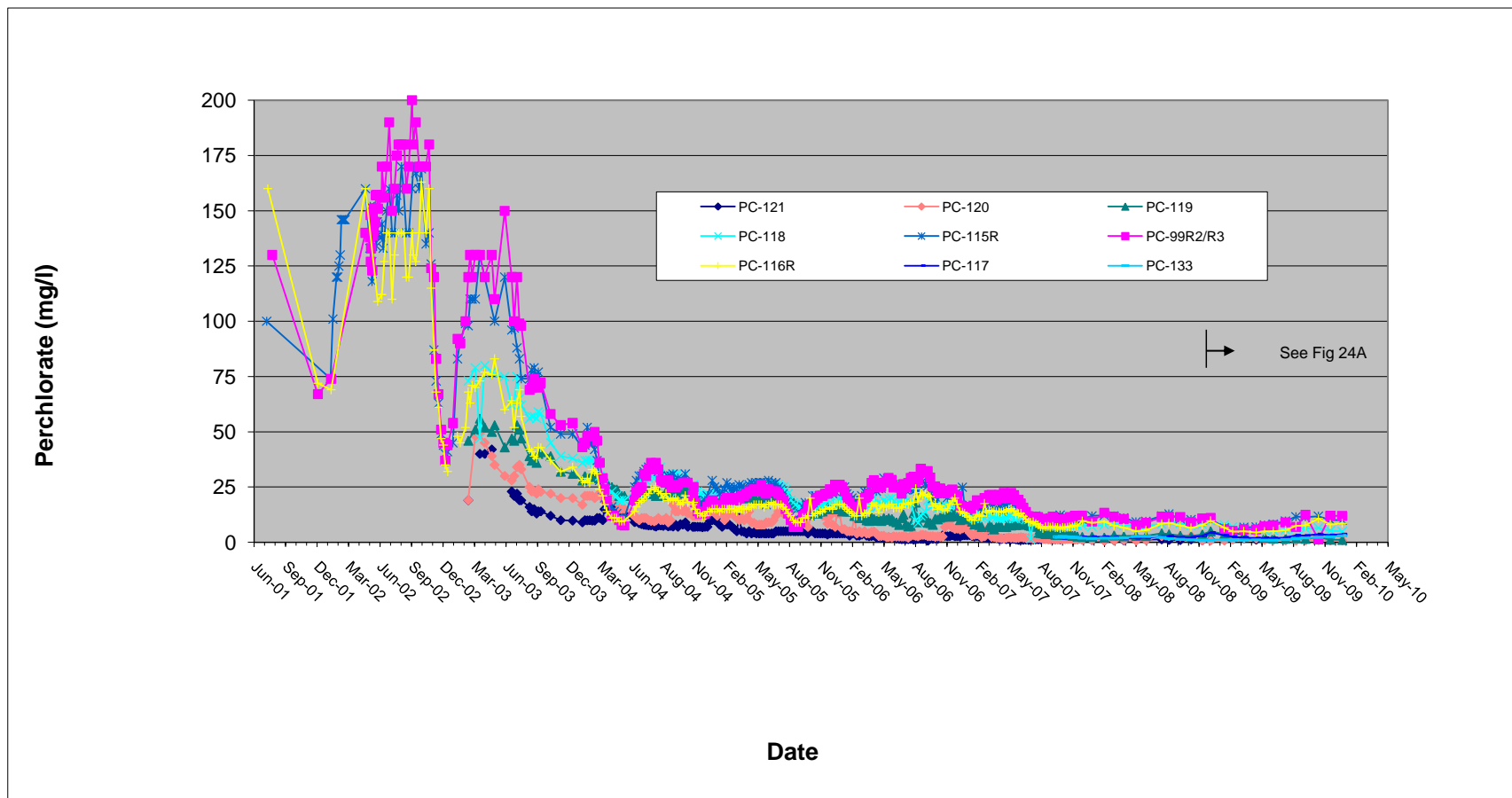


FIGURE 24A
Seep Well Field Perchlorate Concentration Trend Graph, November 2008 – December 2009

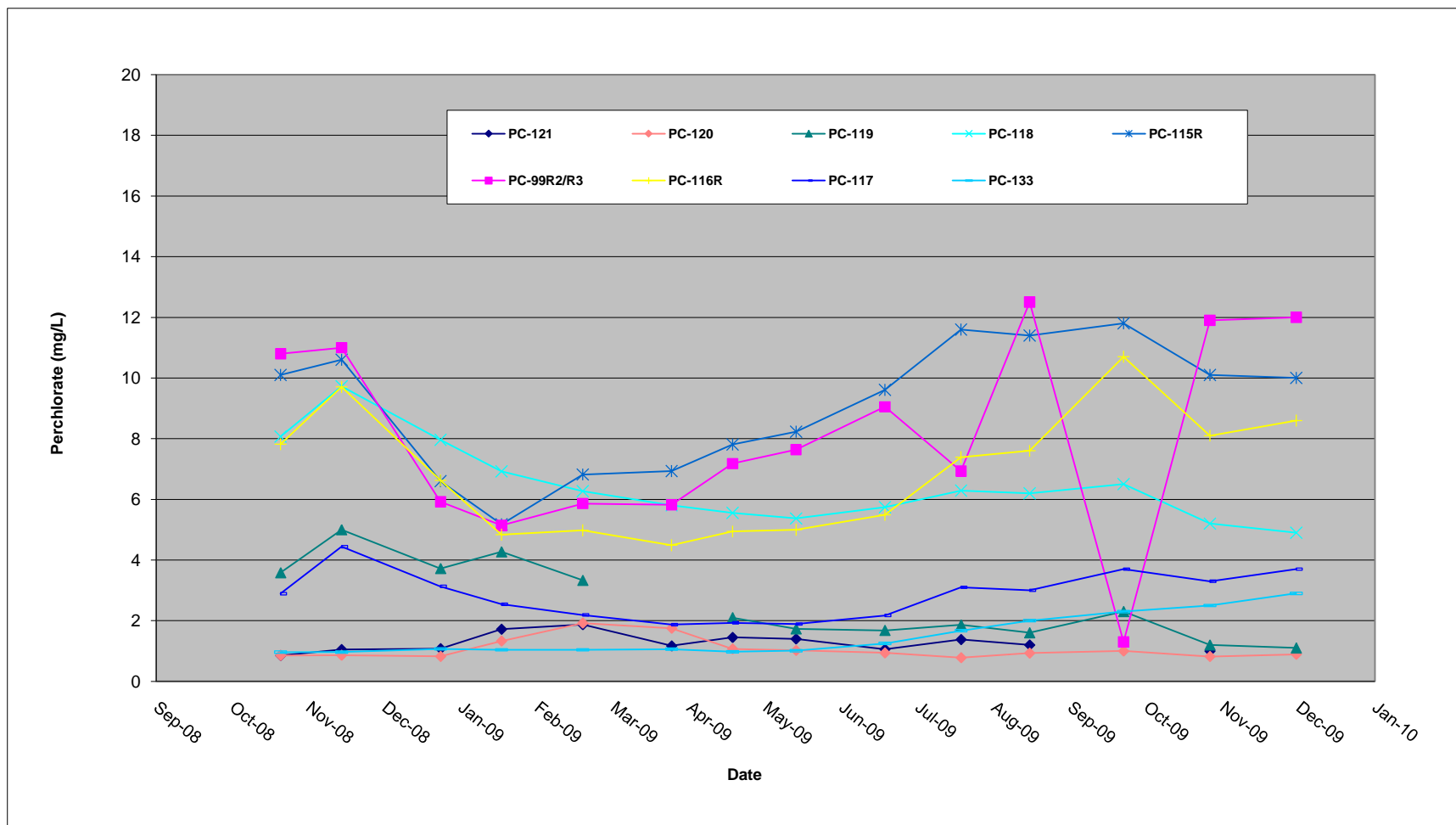


FIGURE 25
Well PC-97 Perchlorate vs. Water Elevation Trend Graph

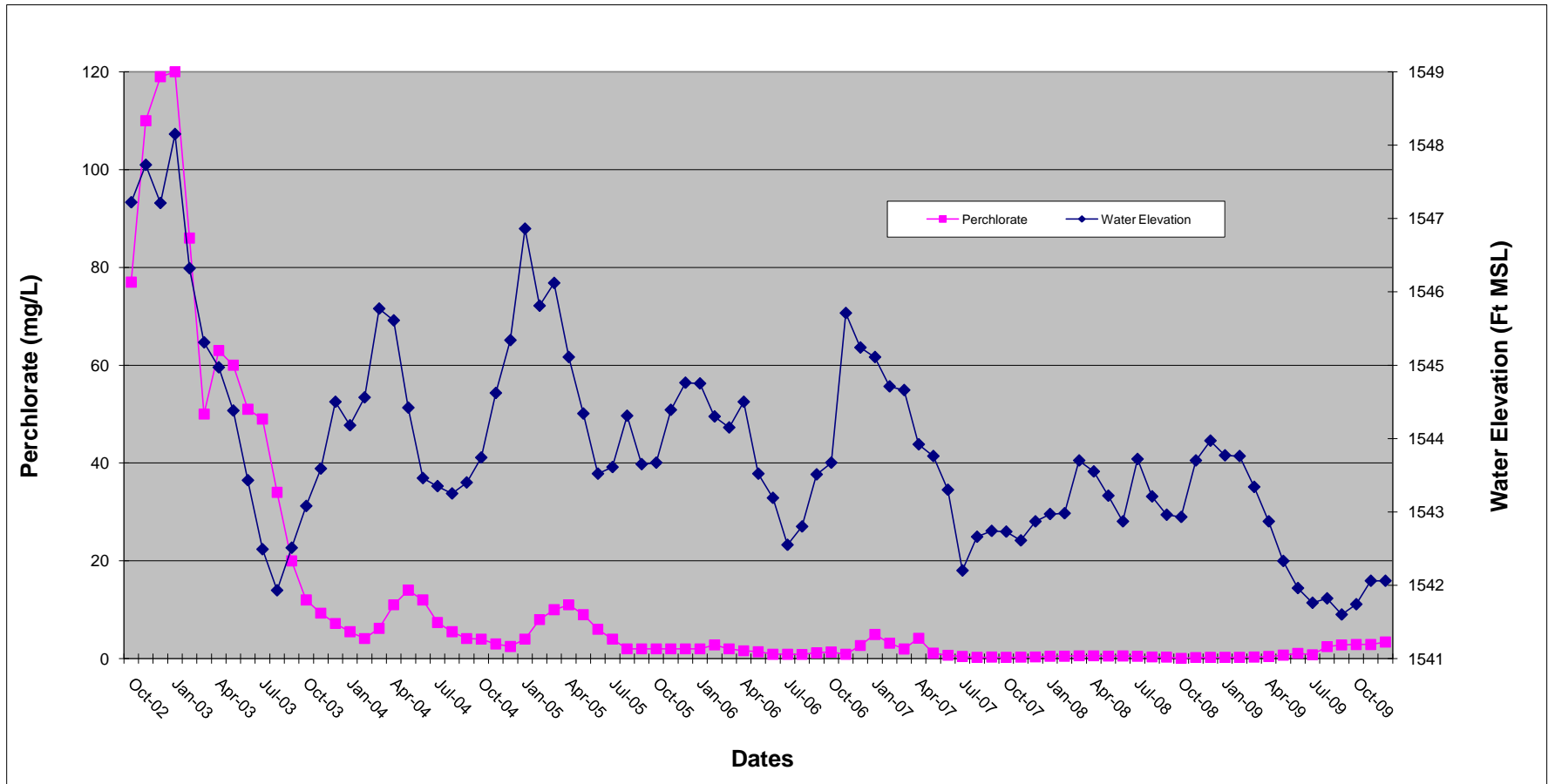


FIGURE 26
Seep Well Field Perchlorate Concentration Section Graph

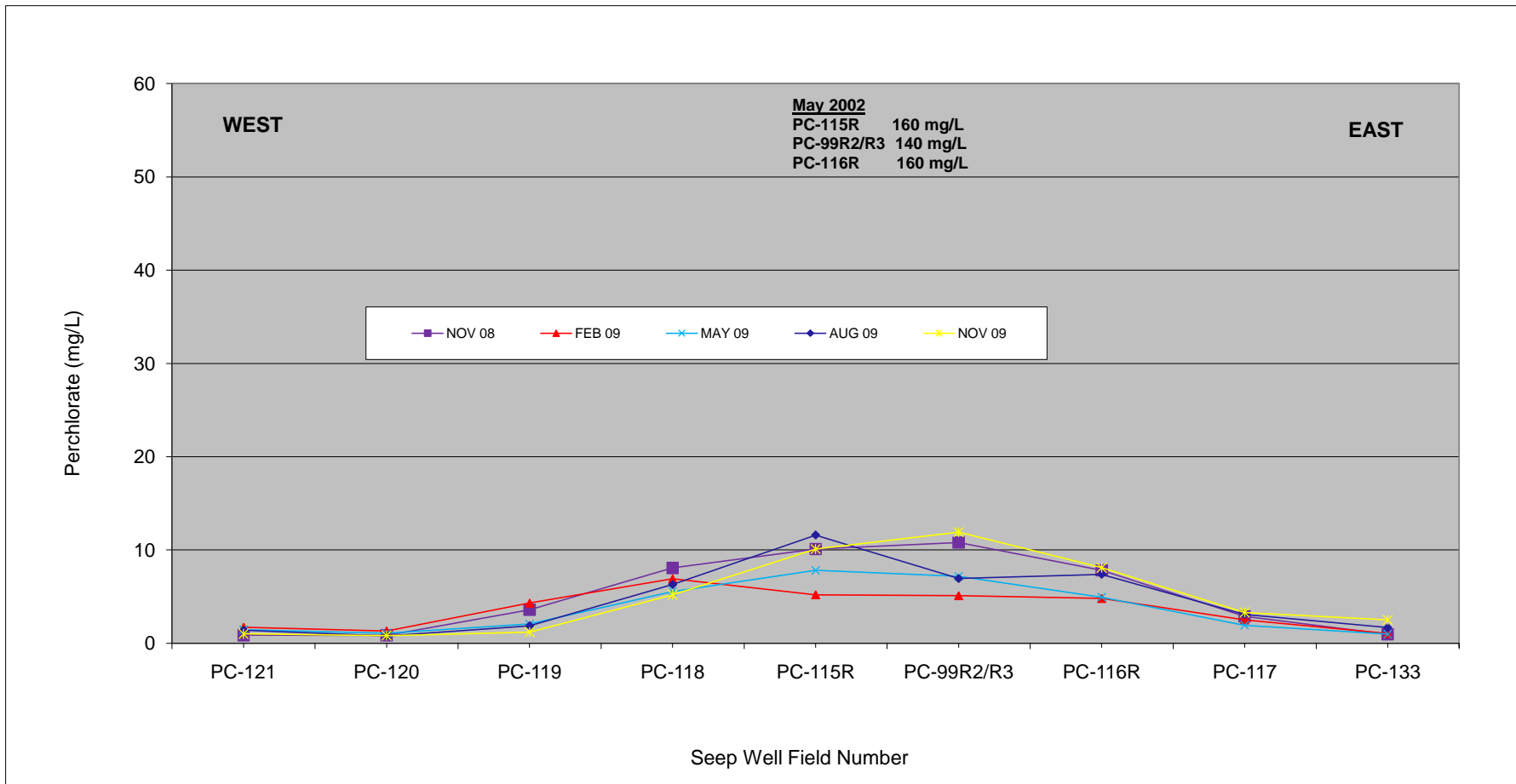


FIGURE 27
Seep Well Field Total Dissolved Solids Section Graph

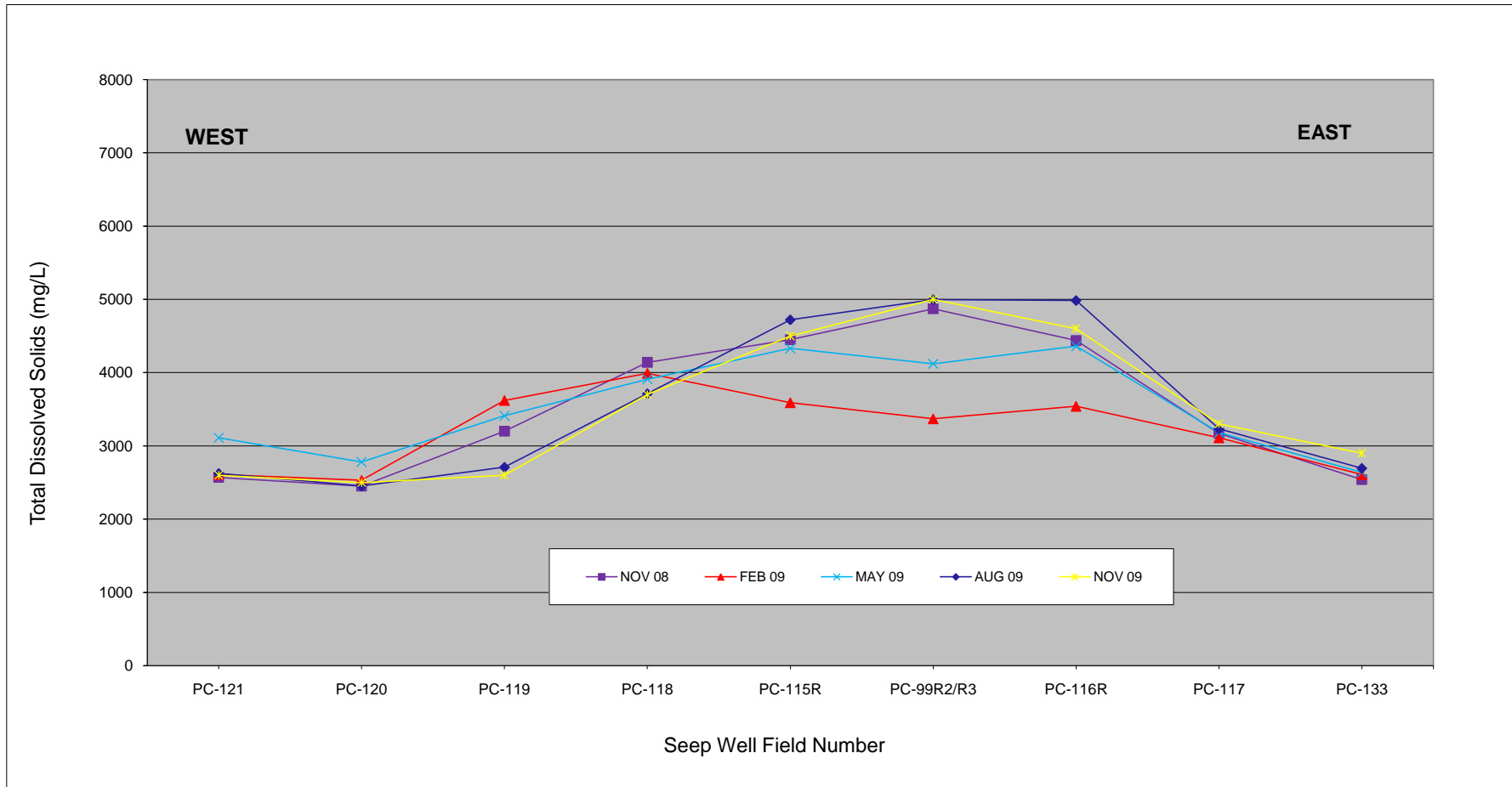


FIGURE 28
Seep Area Average Perchlorate Concentration and Mass Removed

