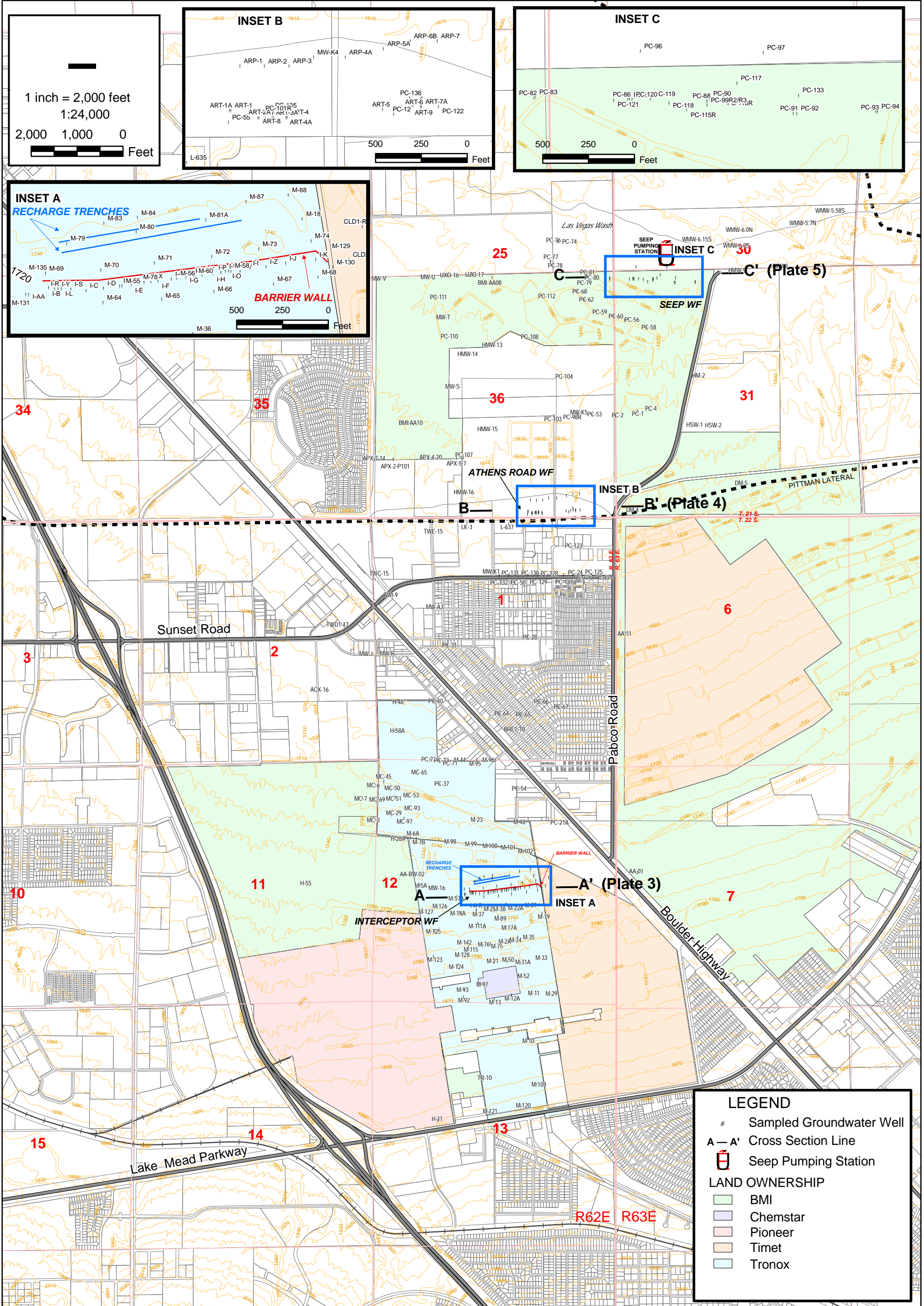


FIGURES






1 inch = 2,000 feet
1:24,000
2,000 1,000 0
Feet

INSET B
500 250 0
Feet


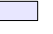



INSET C
500 250 0
Feet

INSET A
RECHARGE TRENCHES
BARRIER WALL
500 250 0
Feet

LEGEND

- # Sampled Groundwater Well
- A - A' Cross Section Line
-  Seep Pumping Station

LAND OWNERSHIP

-  BMI
-  Chemstar
-  Pioneer
-  Timet
-  Tronox

| LOCATION MAP | | | DESIGNED BY: | | REVISIONS | | | |
|---|--------------------|-------------------------|----------------------|------|--------------|-------|-----|--|
| Annual Performance Report Tronox Facility Henderson, Nevada | | | E. Krish | NO.: | DESCRIPTION: | DATE: | BY: | |
| SCALE: 1:24,000 | DATE: 8/12/2009 | PROJECT NUMBER: 2027 | NGEM | | | | | |
| | | | CHECKED BY: NGEM | | | | | |
| | | | APPROVED BY: NGEM | | | | | |

SHEET NUMBER:
1

FIGURE NUMBER:
1



Figure 2: Hydrograph Pairs across the Barrier Wall
Tronox LLC, Henderson, Nevada

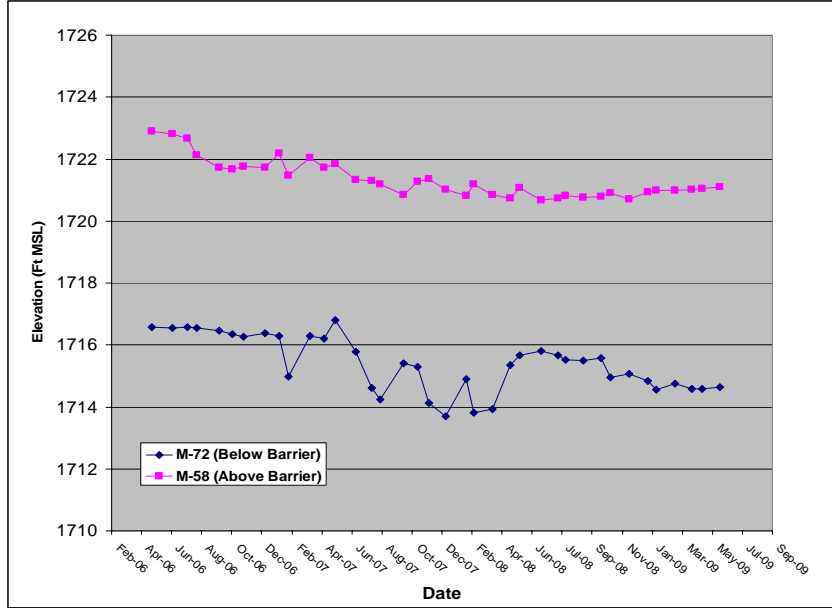
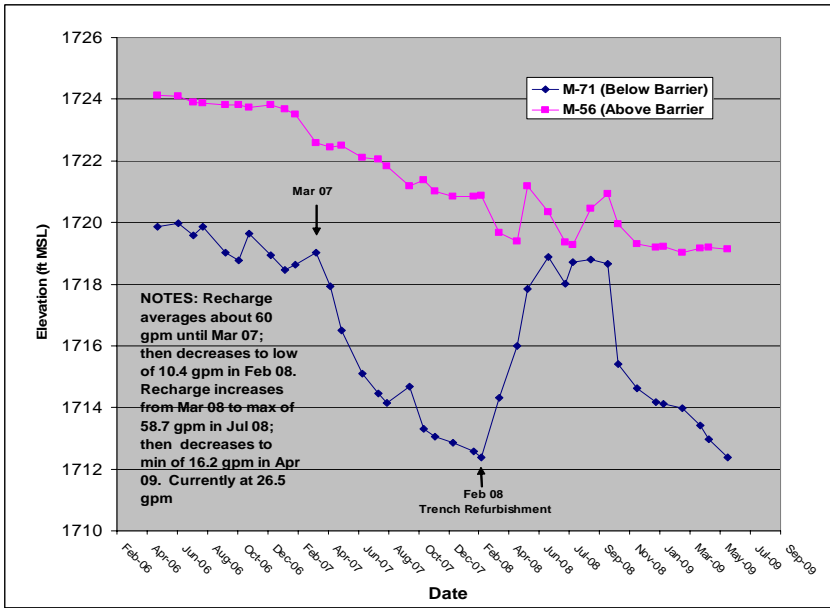
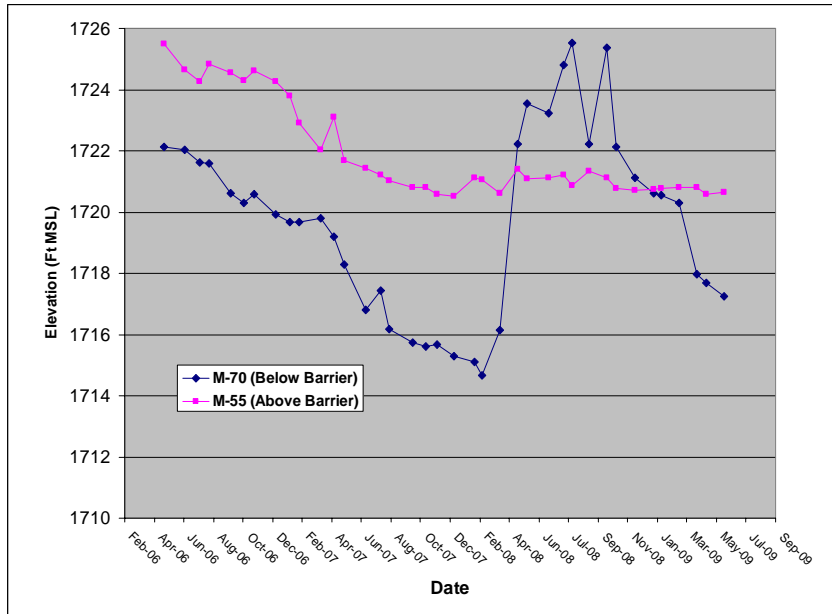
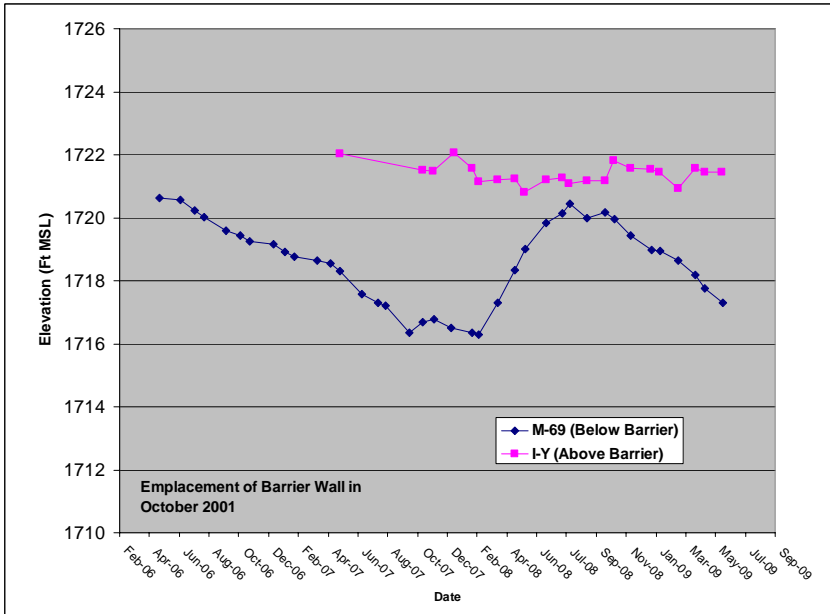


Figure 3: Athens Road Well Field Drawdown
Tronox LLC, Henderson, Nevada

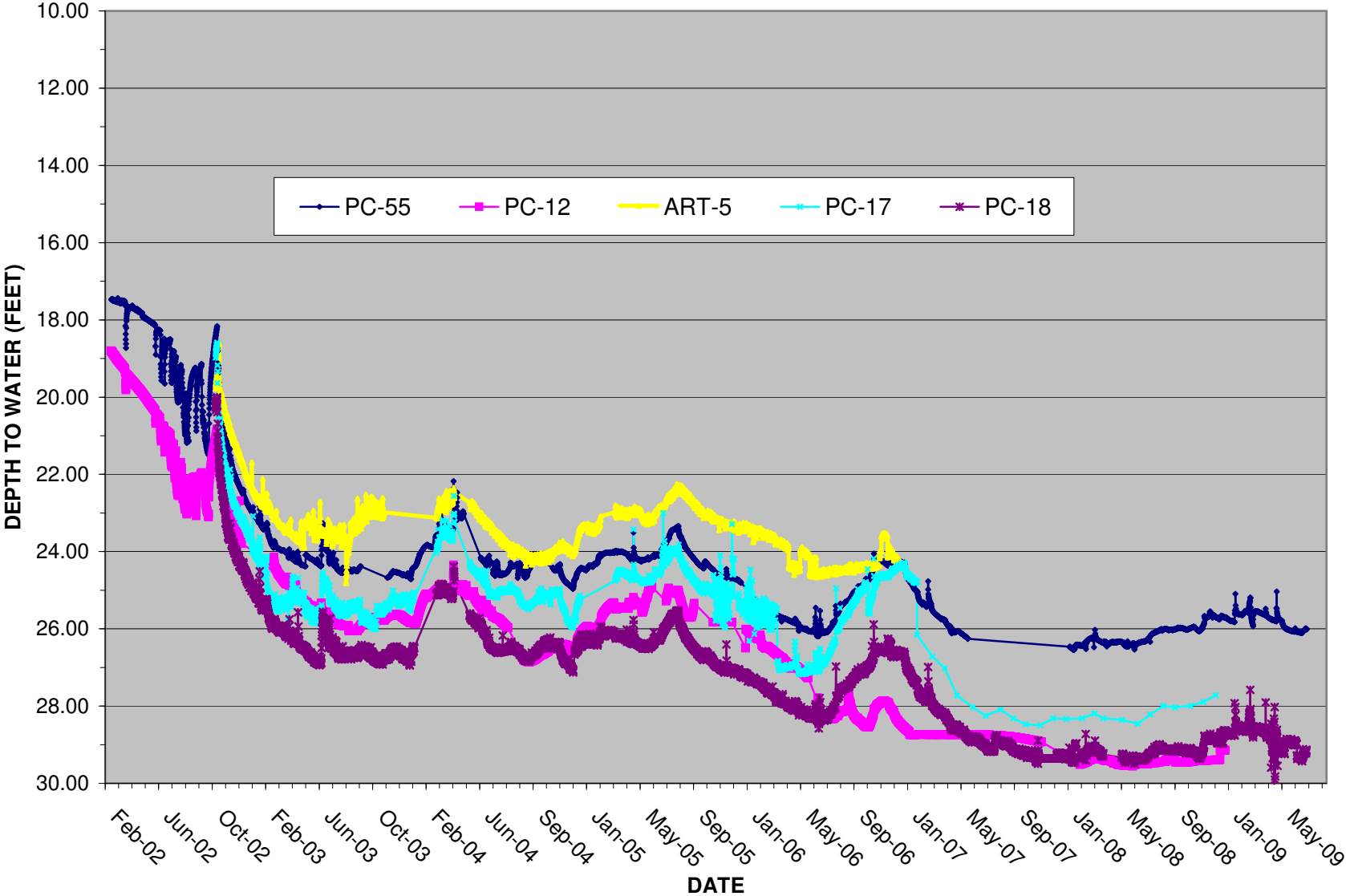
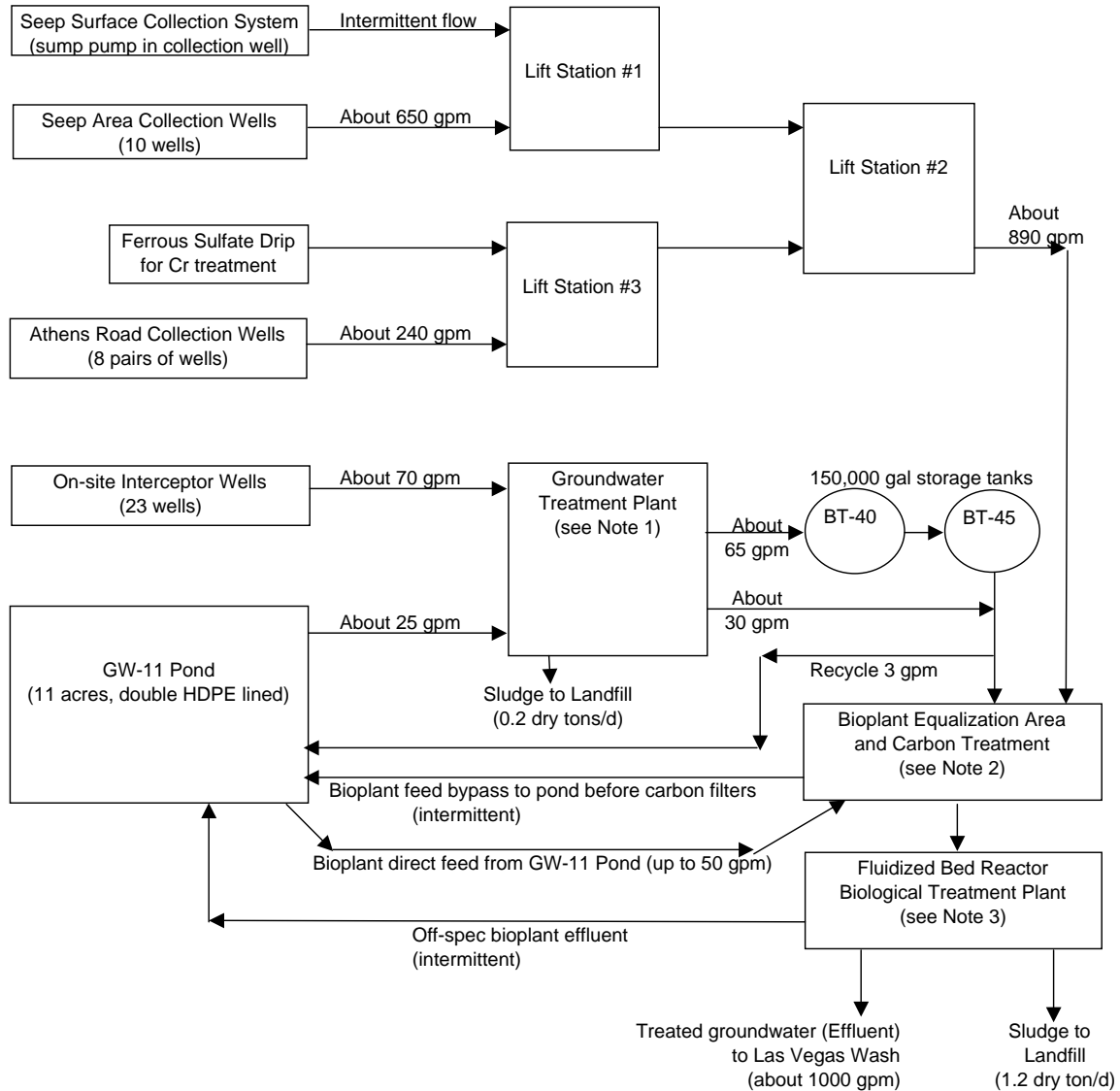


Figure 4
Tronox Henderson Groundwater Treatment Block Flow Diagram

Last modified 12/31/2008



Notes:

- 1) Ferrous sulfate added for chromium removal. Clarifier settles solids. Sludge is removed and landfilled.
- 2) Two 12,000 gallon tanks plus three activated carbon vessels to remove organics which could harm bacteria, followed by cartridge filters.
- 3) Five 33,000 gallon primary reactors, four 28,800 gallon secondary reactors, aeration, dissolved air flotation, UV disinfection, two plate and frame filter presses, and a sand filter.
- 4) Bioplant feed is sampled after cartridge filters (note 2) and effluent is sampled at the discharge to Las Vegas Wash.

Figure 5: Interceptor Well Field Total Chromium Concentration Section Graph

Tronox LLC, Henderson, Nevada

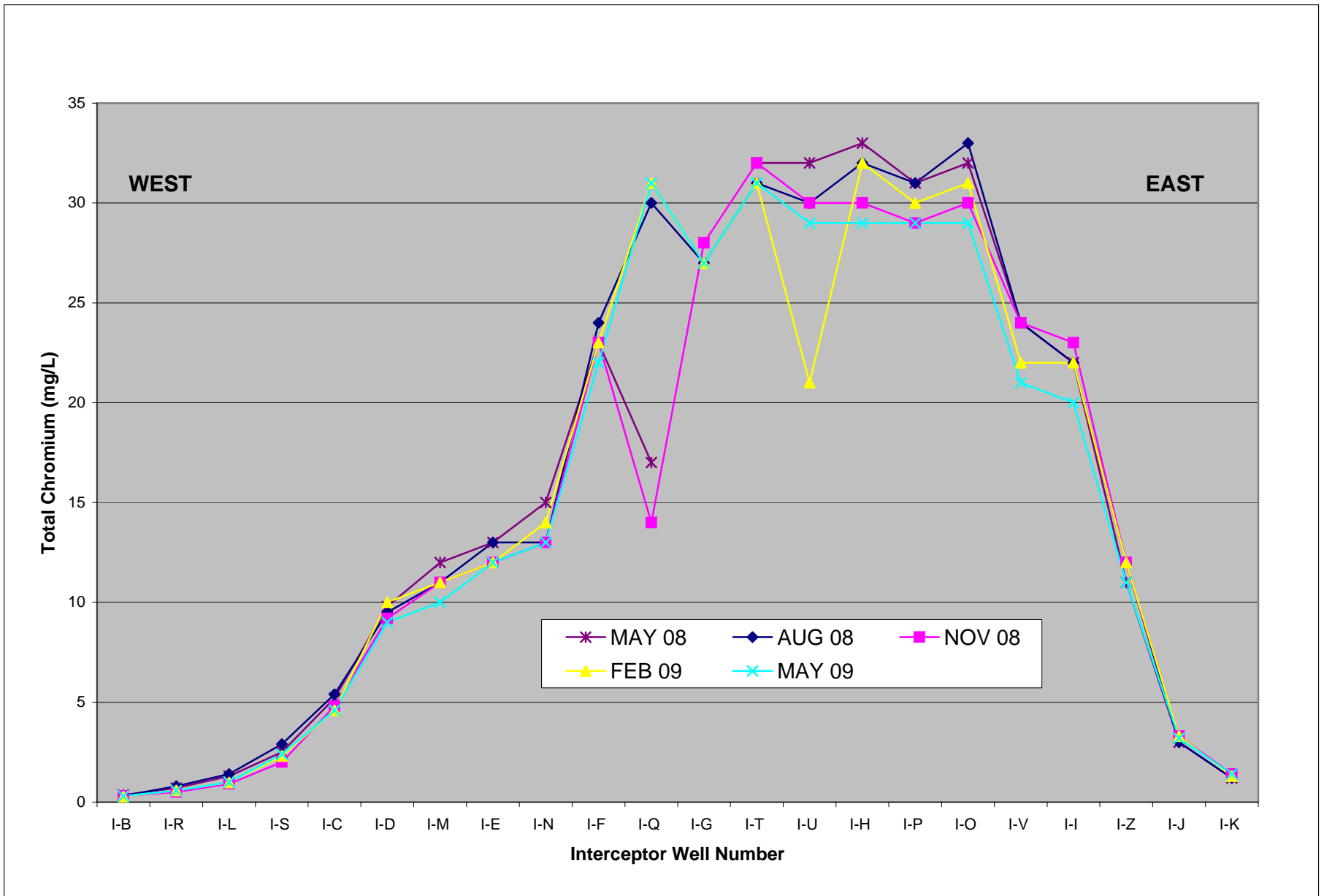


Figure 6: Consent Order Appendix J Wells Total Chromium Concentration Trend Graph

Tronox LLC, Henderson, Nevada

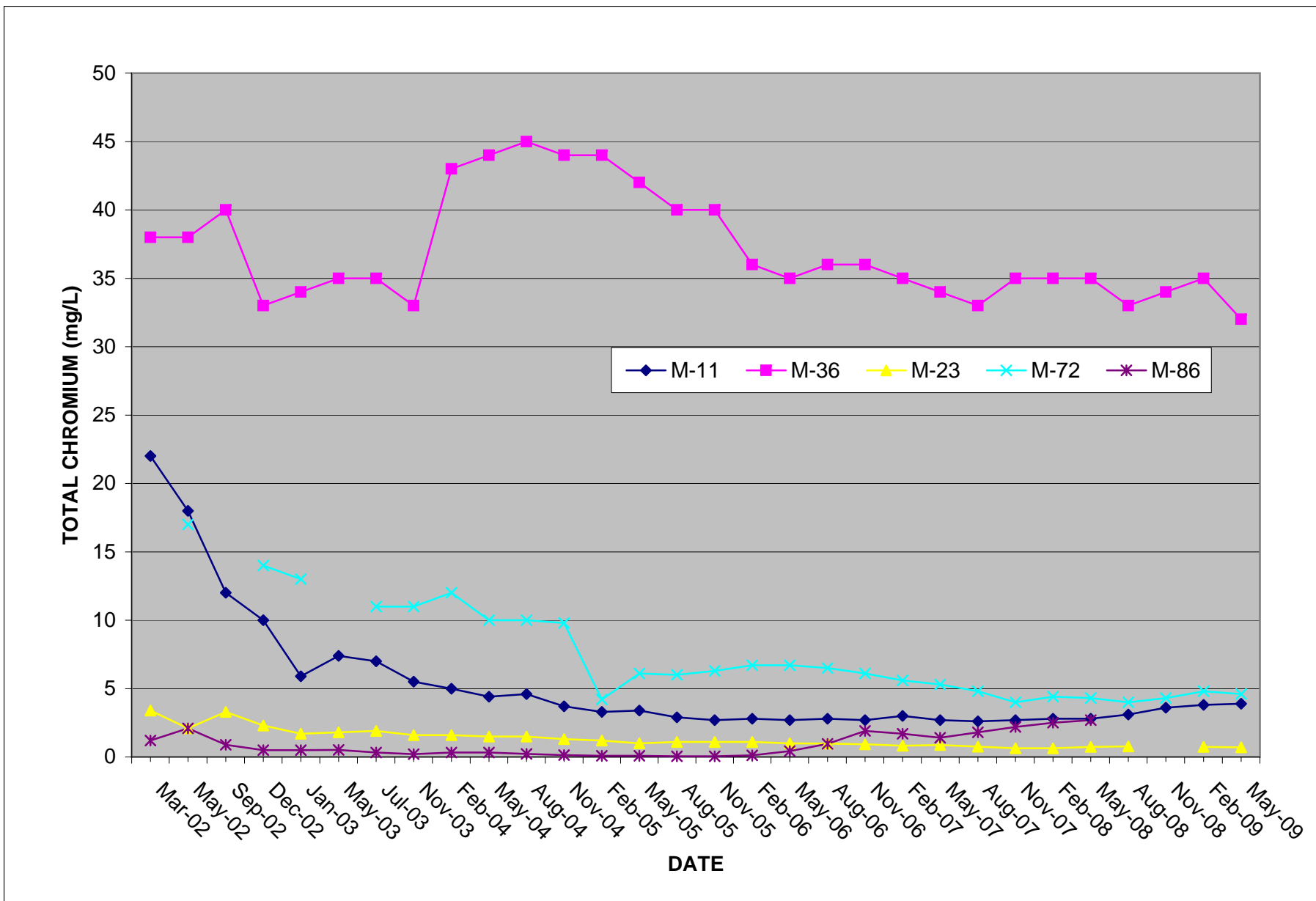


Figure 7: Athens Road Well Field Total Chromium Concentration Section Graph

Tronox LLC, Henderson, Nevada

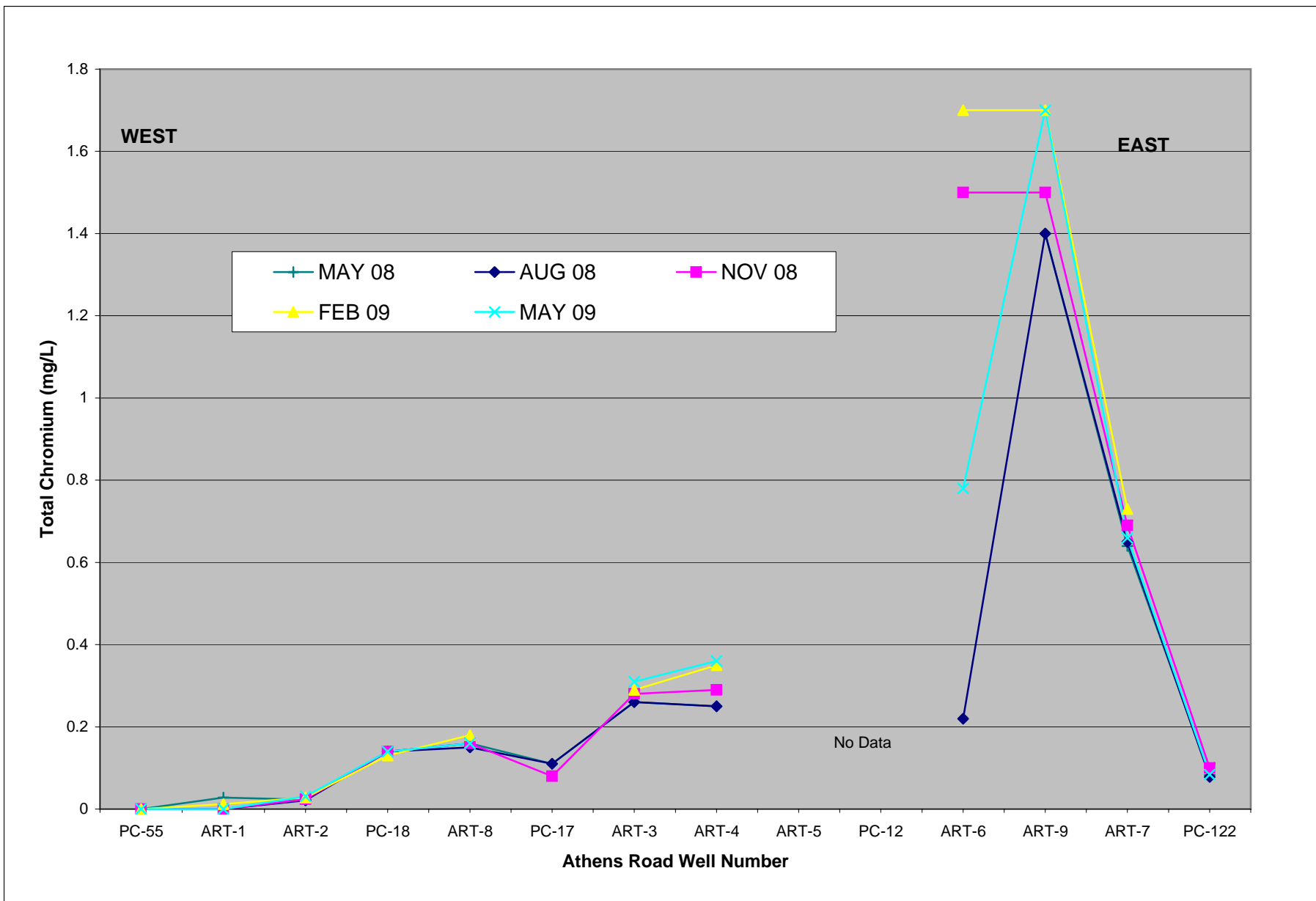


Figure 8: Perchlorate Removed from the Environment July 2008 - June 2009

Tronox LLC, Henderson, Nevada

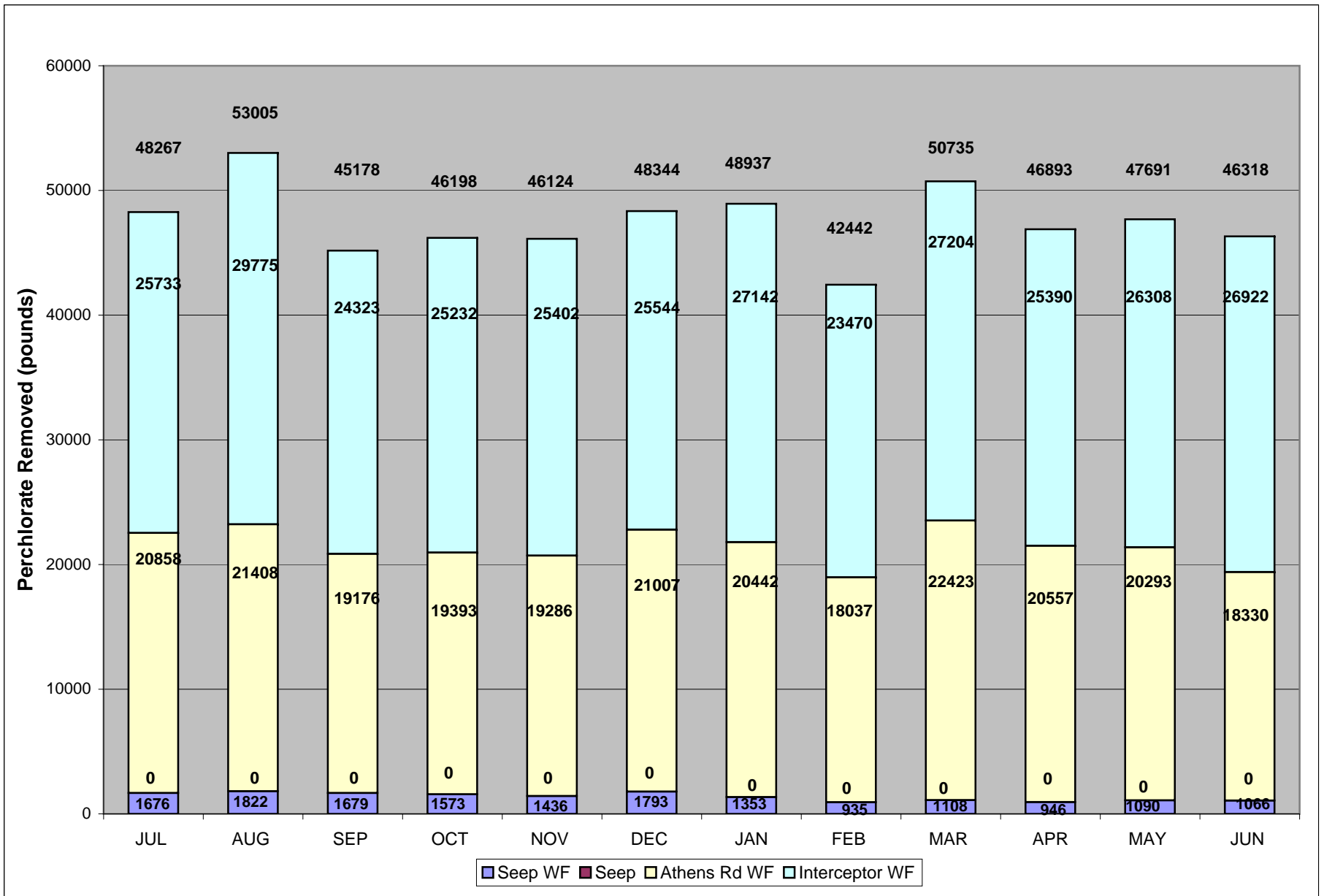


Figure 9: Interceptor Well Field Perchlorate Concentration Section Graph

Tronox LLC, Henderson, Nevada

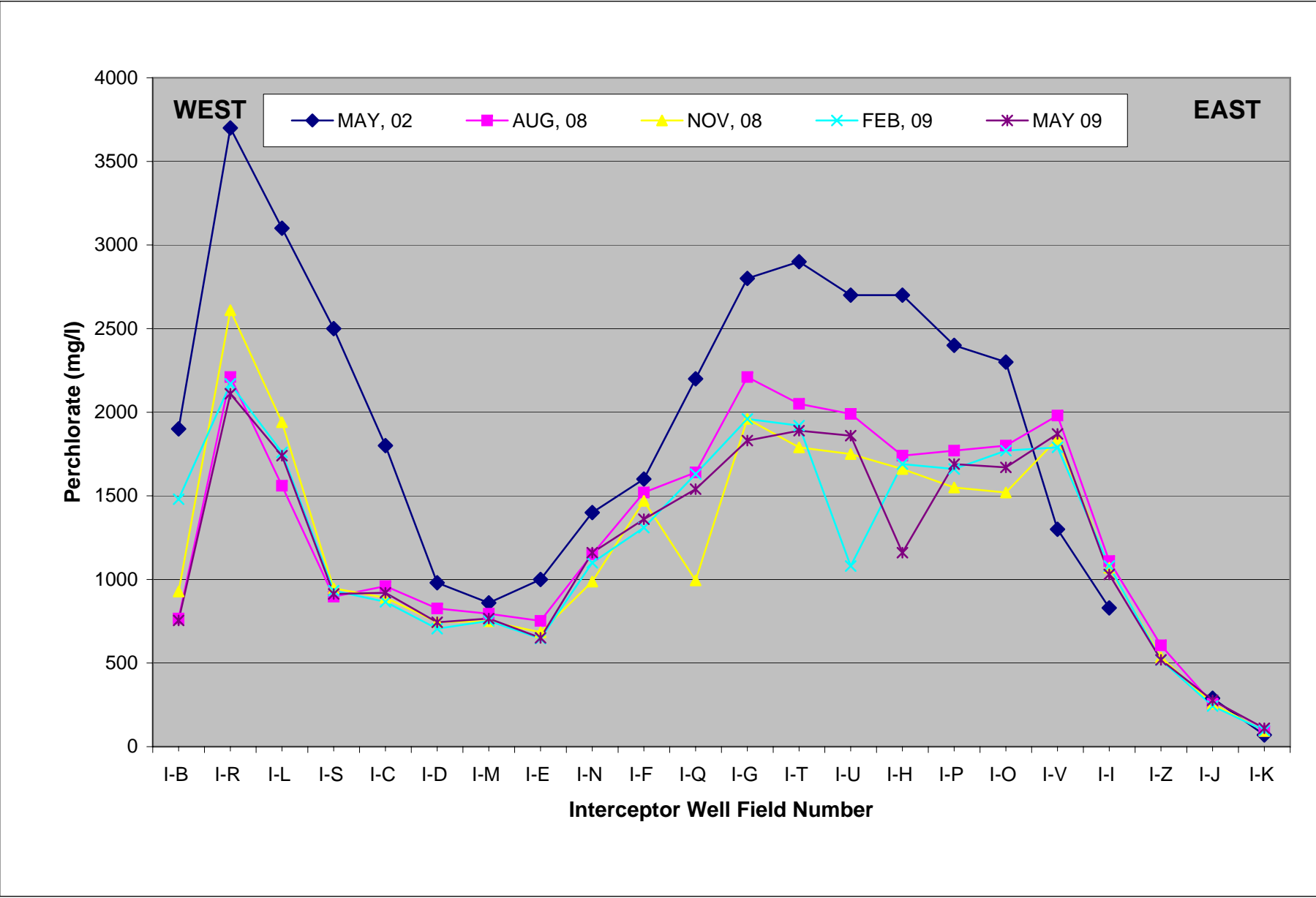


Figure 10A: Interceptor Well Field Perchlorate Concentration Trend Graph May 2008 - May 2009

Tronox LLC, Henderson, Nevada

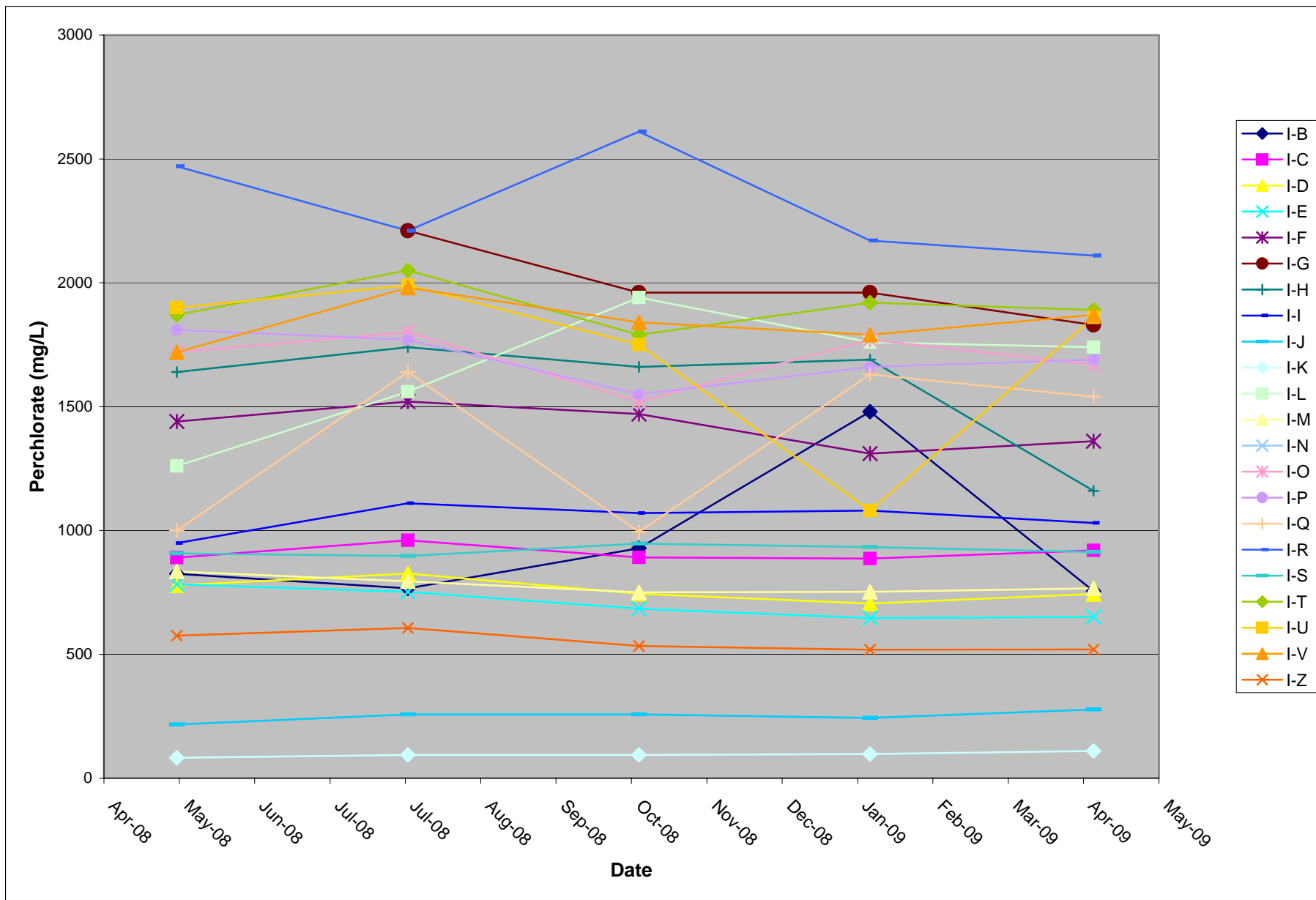


Figure 11: interceptor Well Field Total Dissolved Solids Section Graph

Tronox LLC, Henderson, Nevada

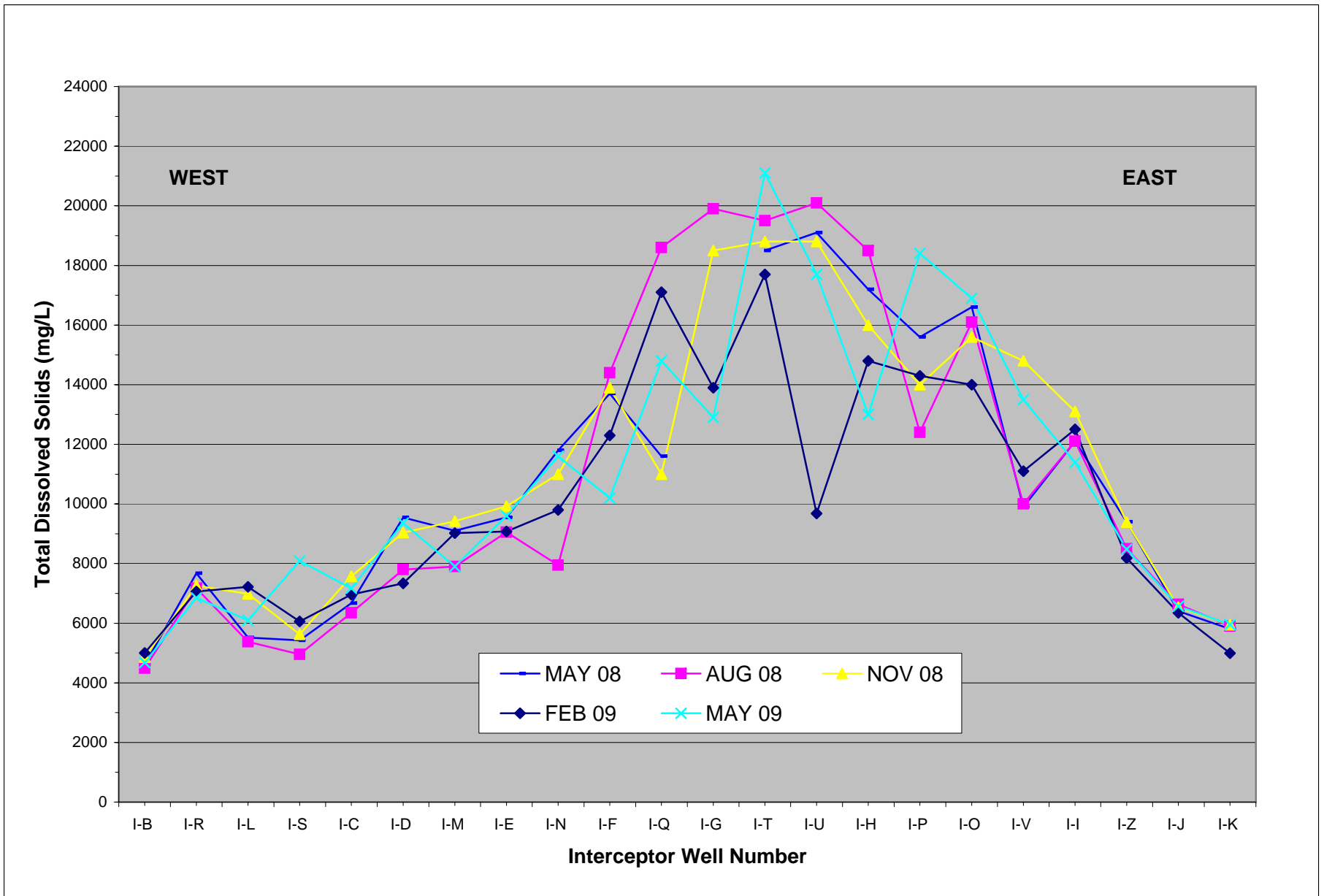


Figure 12: Interceptor Well Field Average Perchlorate Concentration and Mass Removed

Tronox LLC, Henderson, Nevada

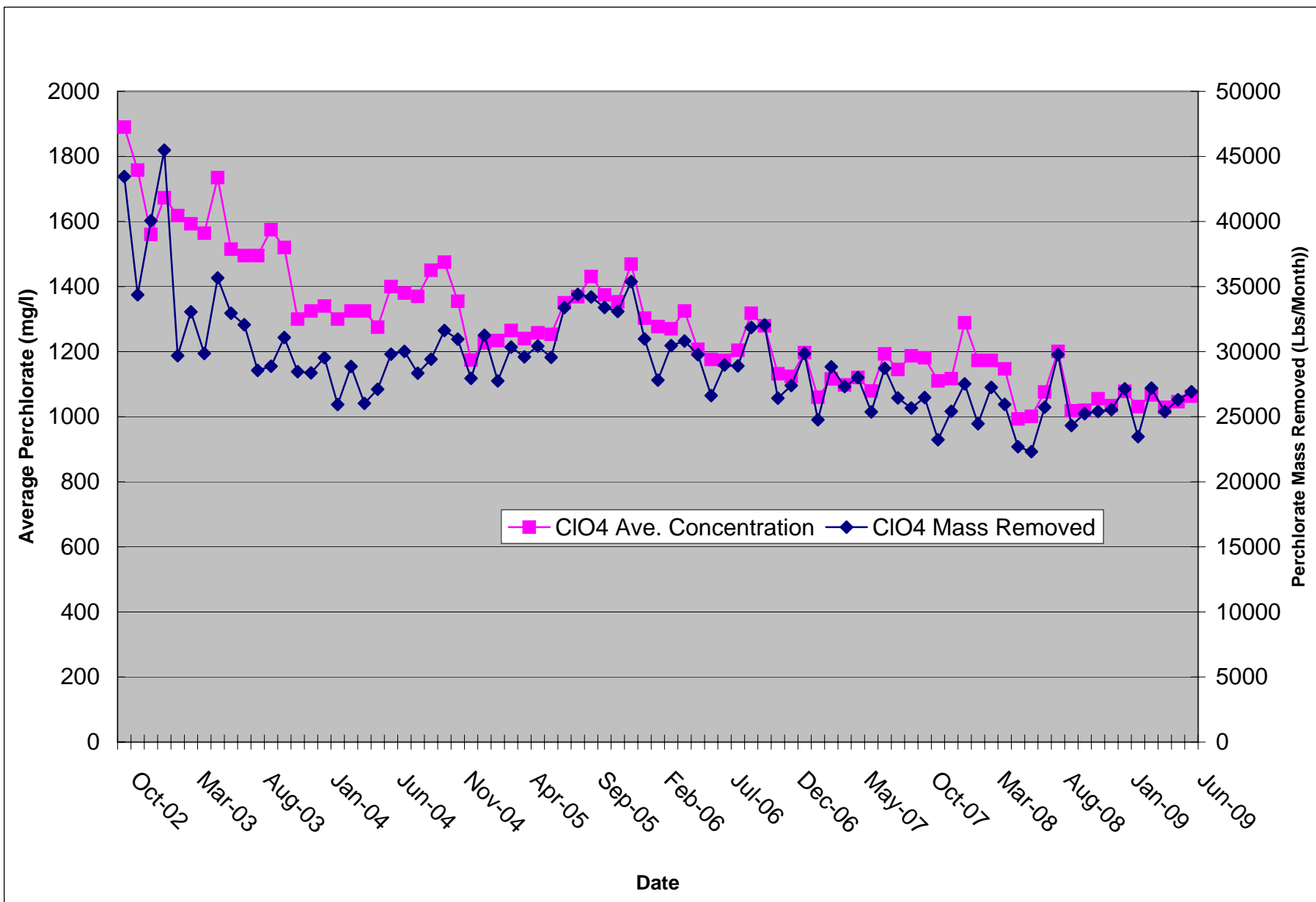


Figure 13: Well M-100 Perchlorate Concentration vs. Water Elevation Trend Graph

Tronox LLC, Henderson, Nevada

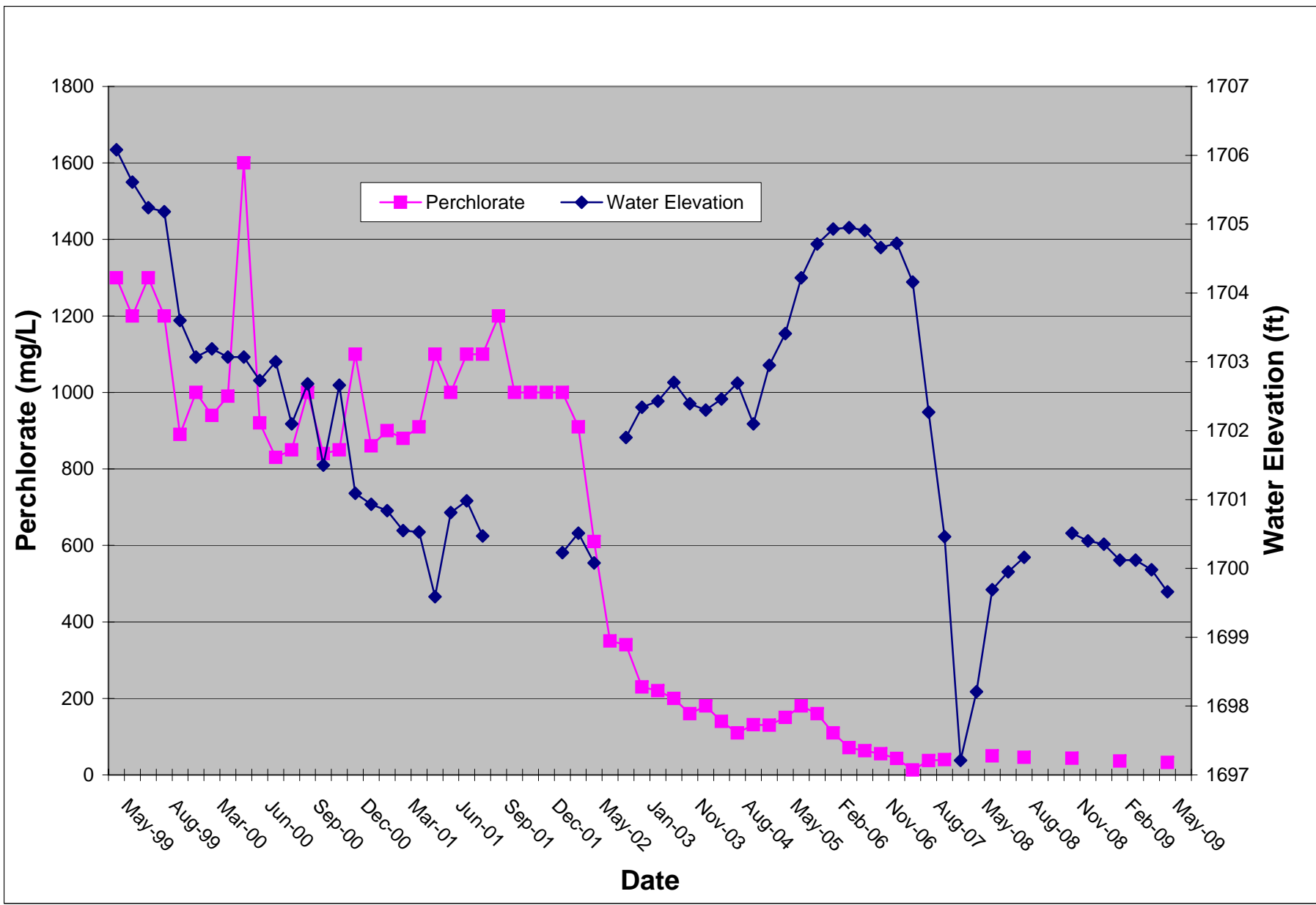


Figure 14: Athens Road Well Field Perchlorate Concentration Trend Graph
Tronox LLC, Henderson, Nevada

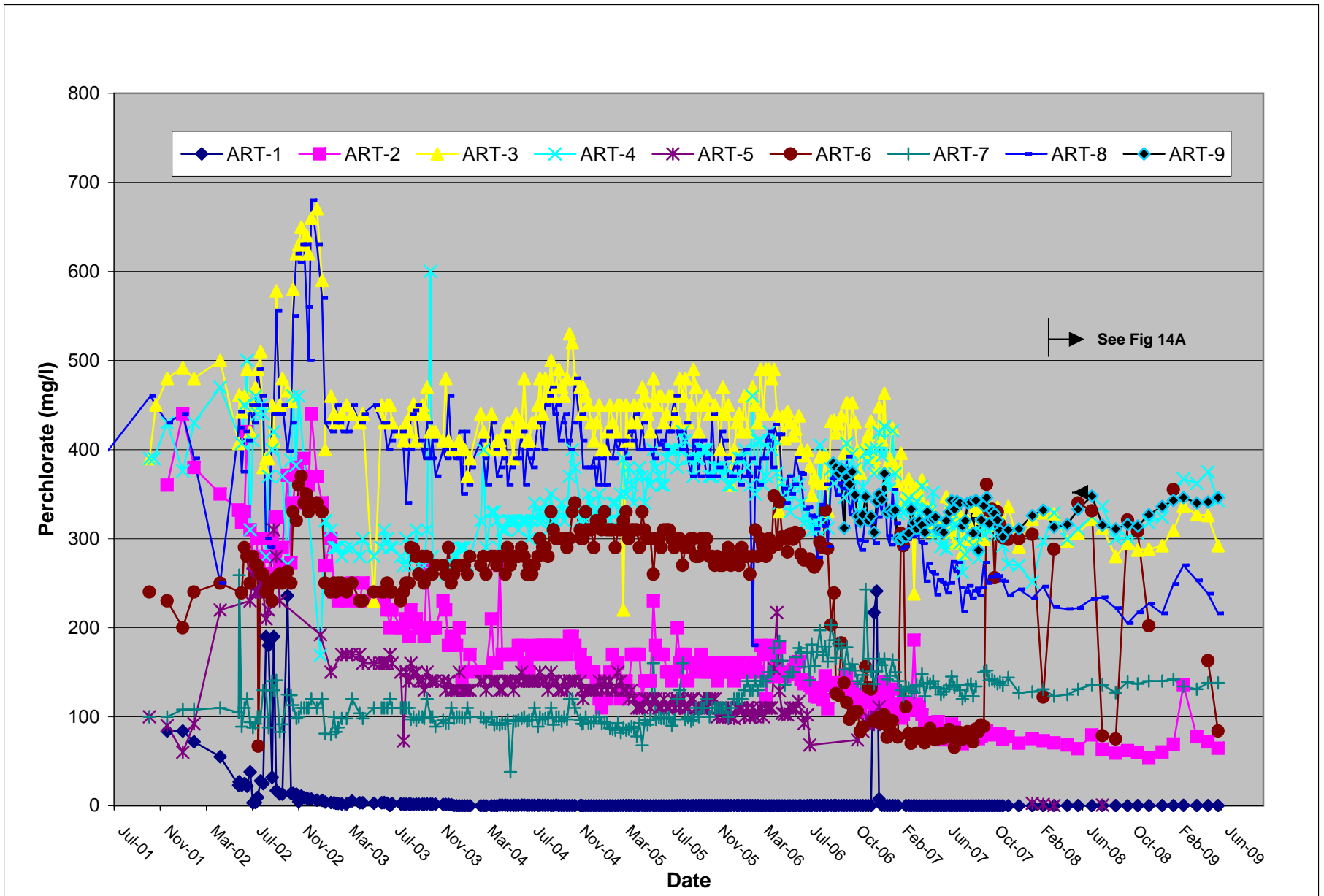


Figure 14A: Athens Road Well Field Perchlorate Concentration Trend Graph May 2008 - June 2009
 Tronox LLC, Henderson, Nevada

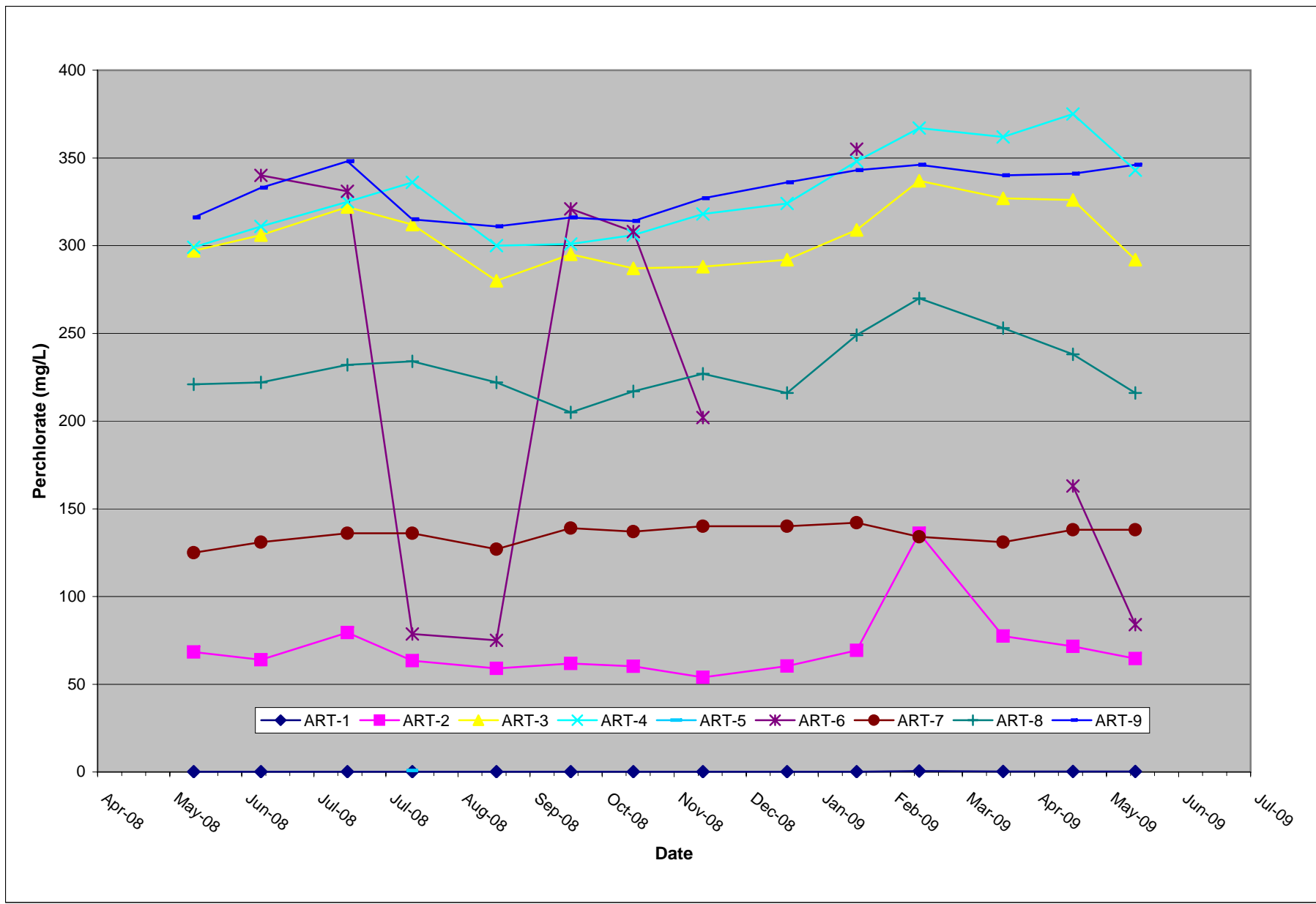


Figure 15: Athens Road Well Field Perchlorate Concentration Section Graph

Tronox LLC, Henderson, Nevada

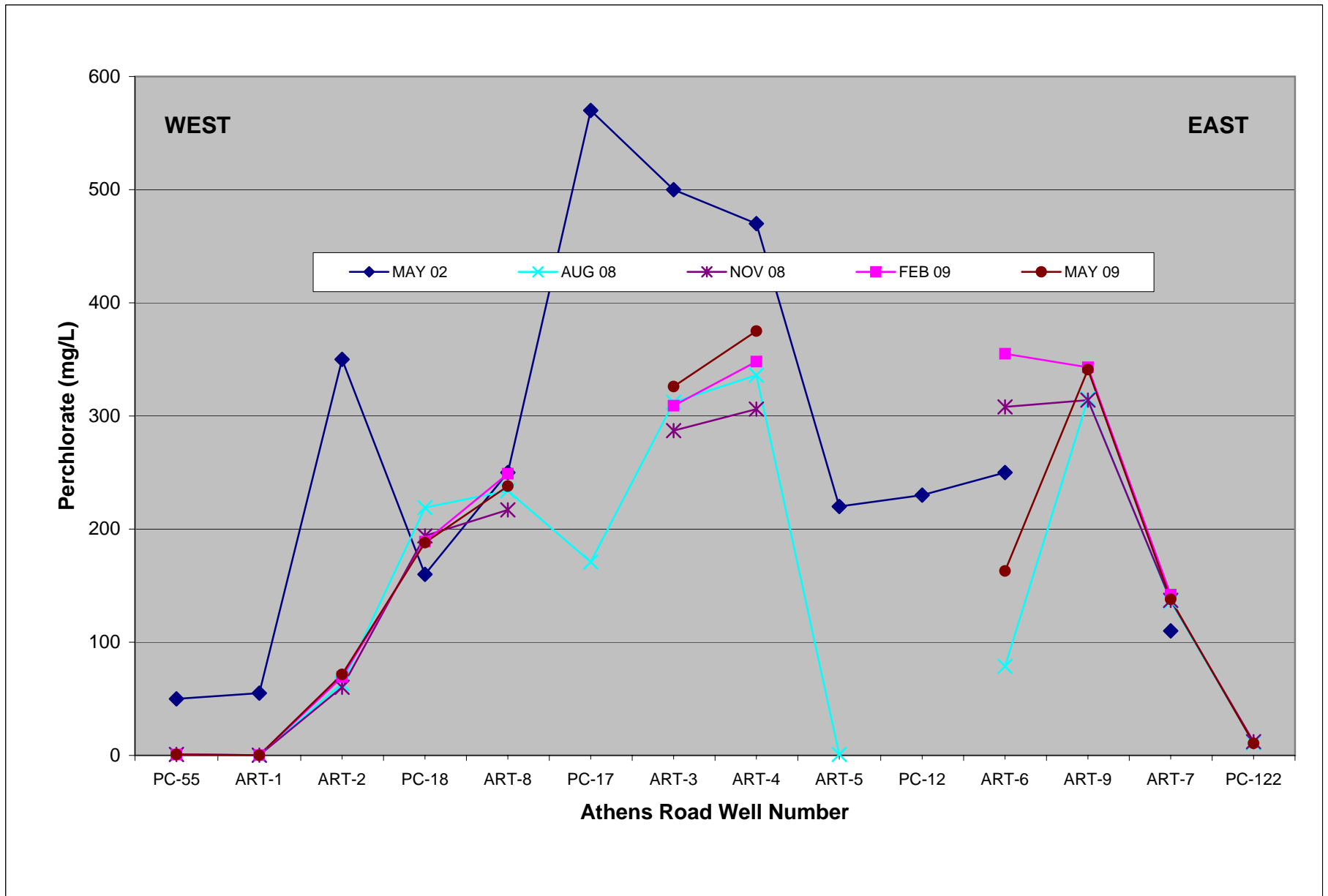


Figure 16: Athens Road Well Field Average Perchlorate Concentration in ART-8 and Mass Removed
 Tronox LLC, Henderson, Nevada

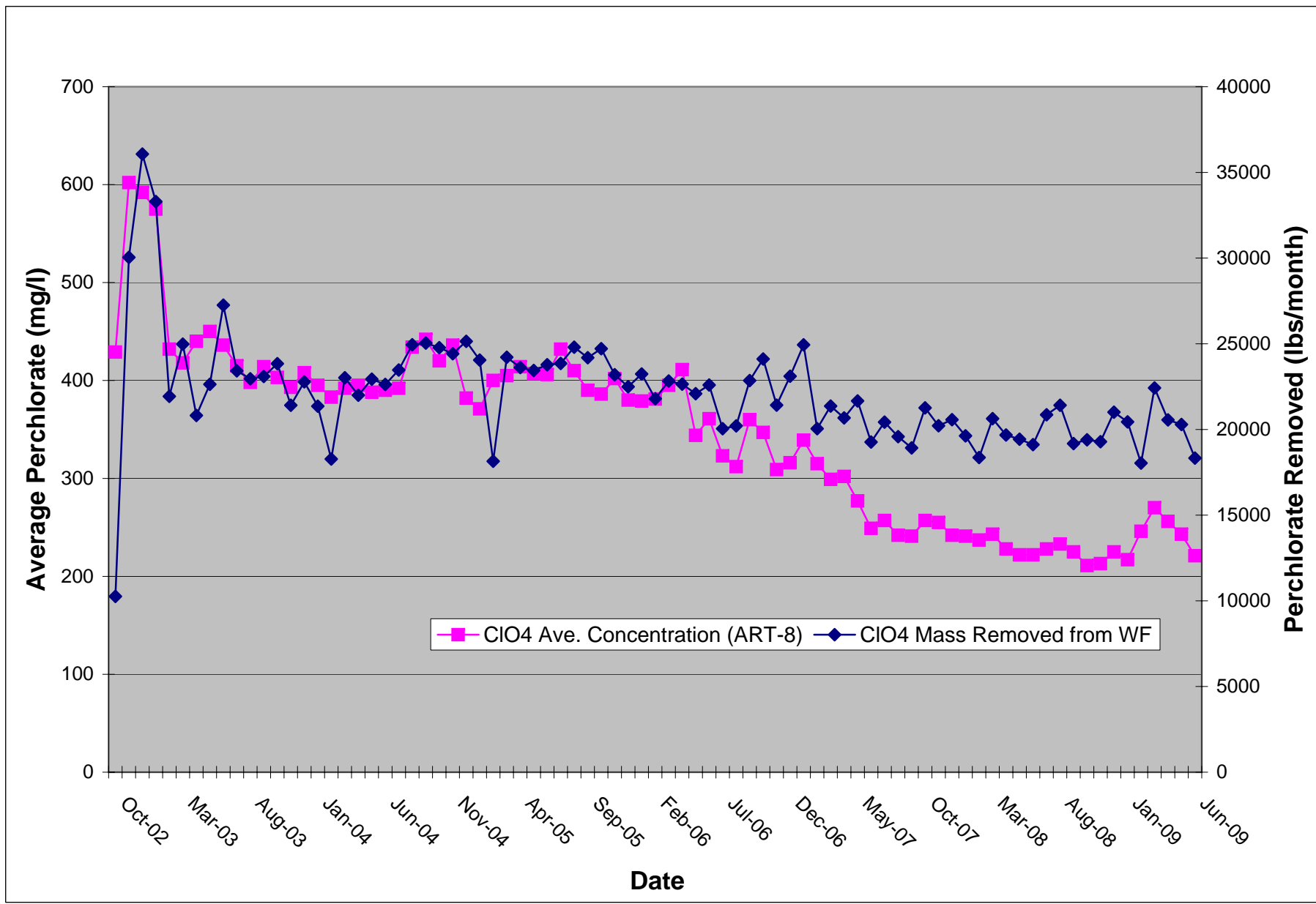


Figure 17: Athens Road Well Field Total Dissolved Solids Section Graph

Tronox LLC, Henderson, Nevada

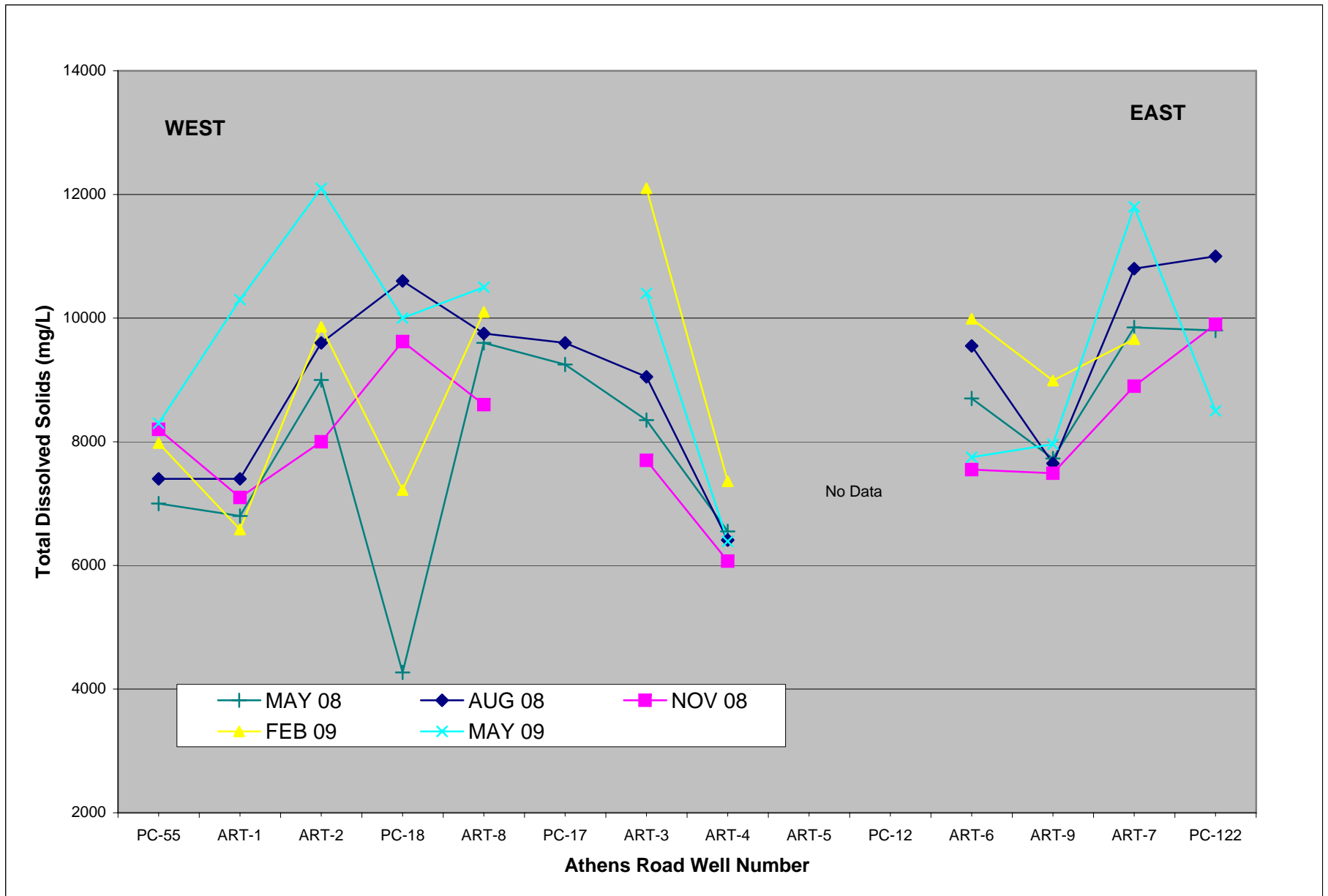


Figure 18: Athens Road Piezometer Well Line Perchlorate Concentration Trend Graph

Tronox LLC, Henderson, Nevada

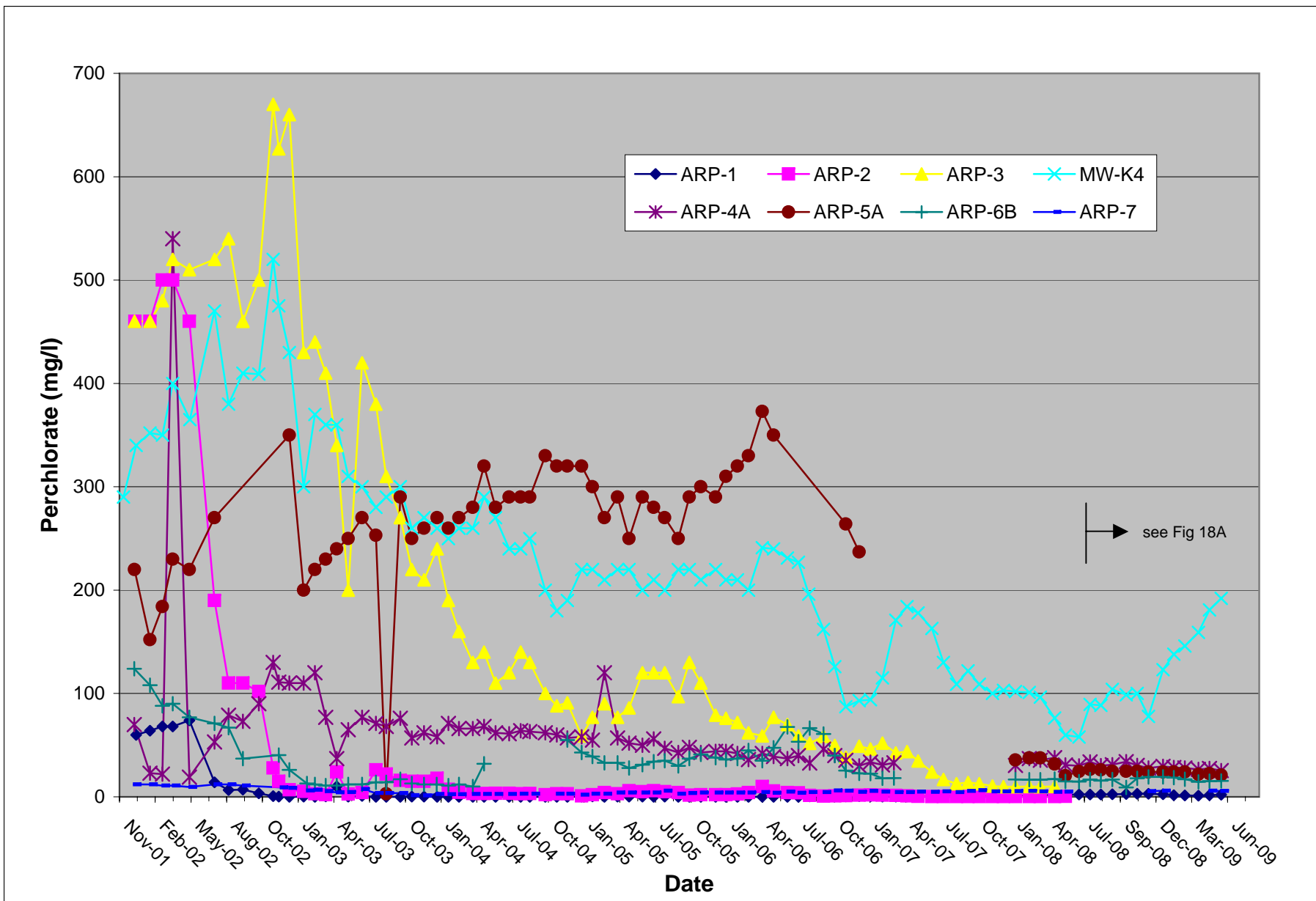


Figure 18A: Athens Road Piezometer Well Line Perchlorate Trend Graph May 2008 - June 2009

Tronox LLC, Henderson, Nevada

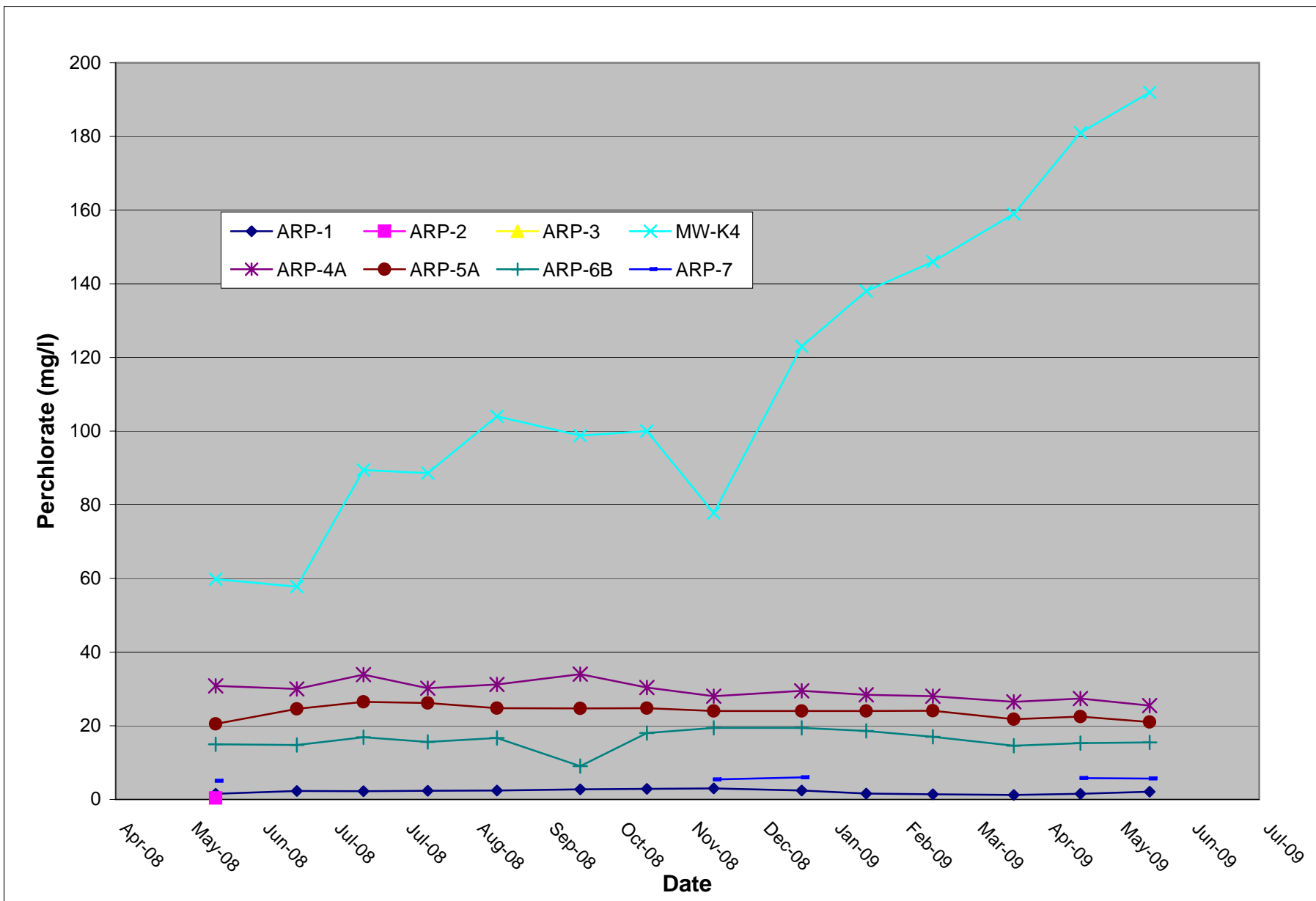


Figure 19: Athens Road Piezometer Well Line Perchlorate Section Graph

Tronox LLC, Henderson, Nevada

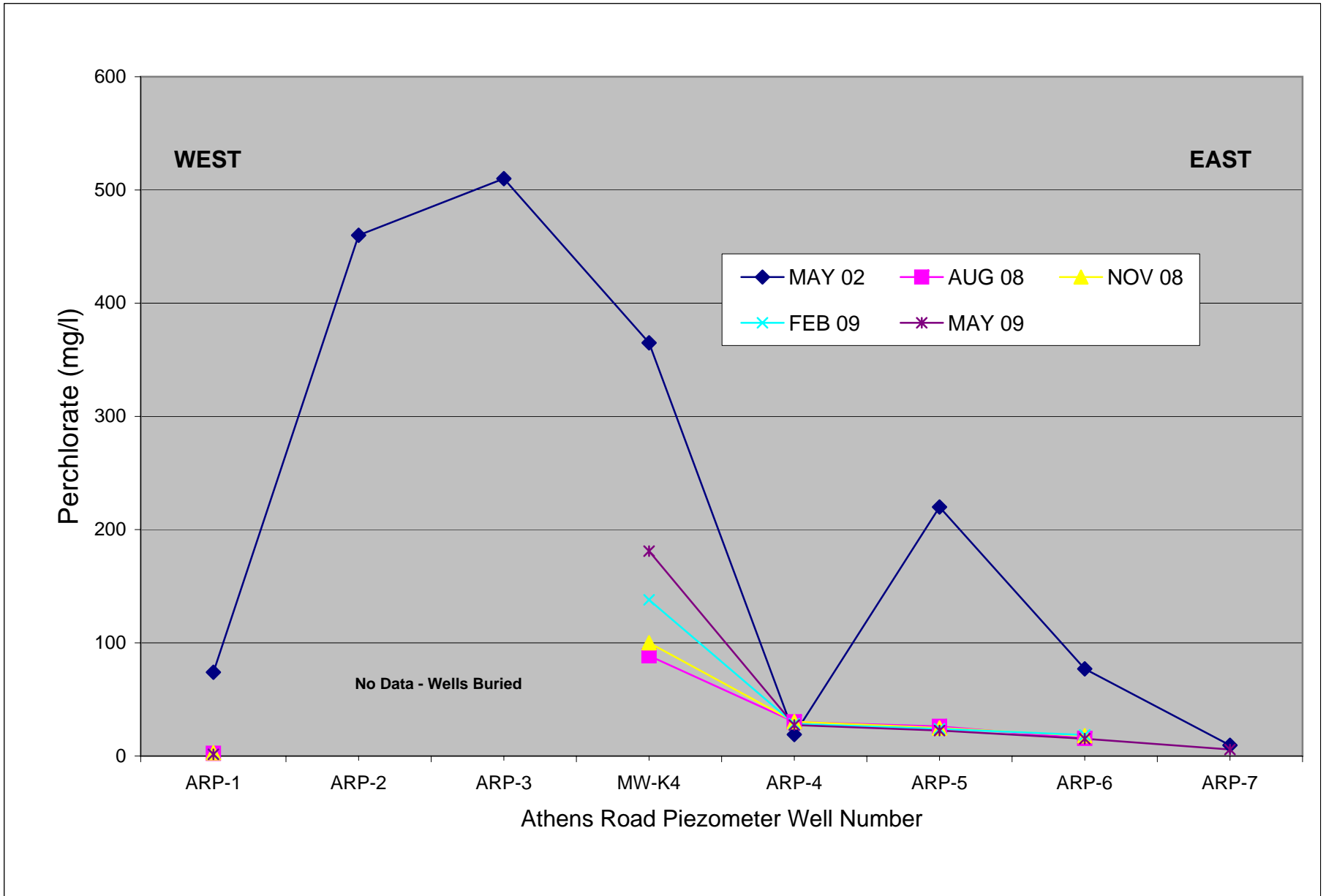


Figure 20: City of Henderson WRF Well Line Perchlorate Concentration Trend Graph
Tronox LLC, Henderson, Nevada

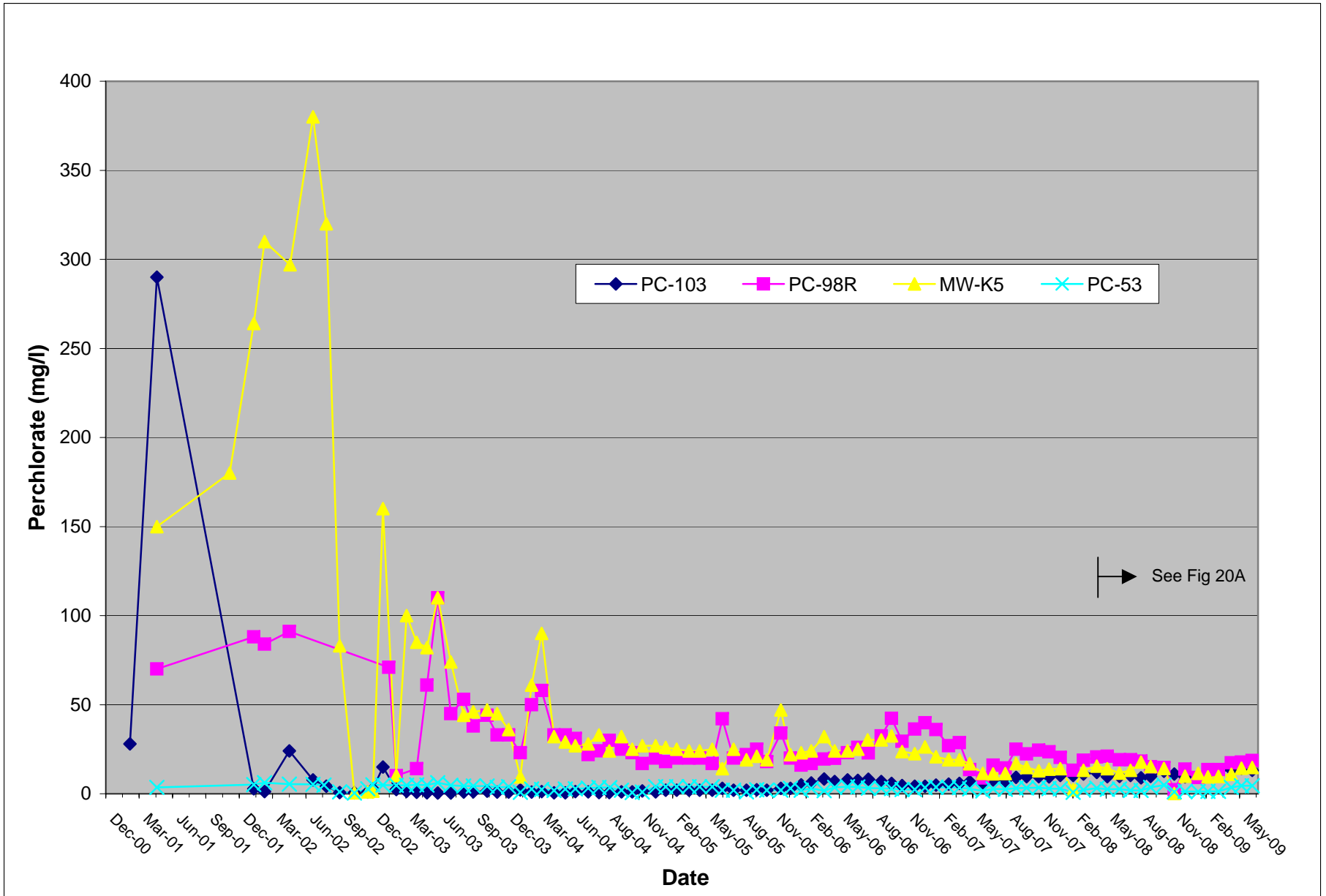


Figure 20A: COH WRF Well Line Perchlorate Concentration Trend Graph May 2008 - June 2009
 Tronox LLC, Henderson, Nevada

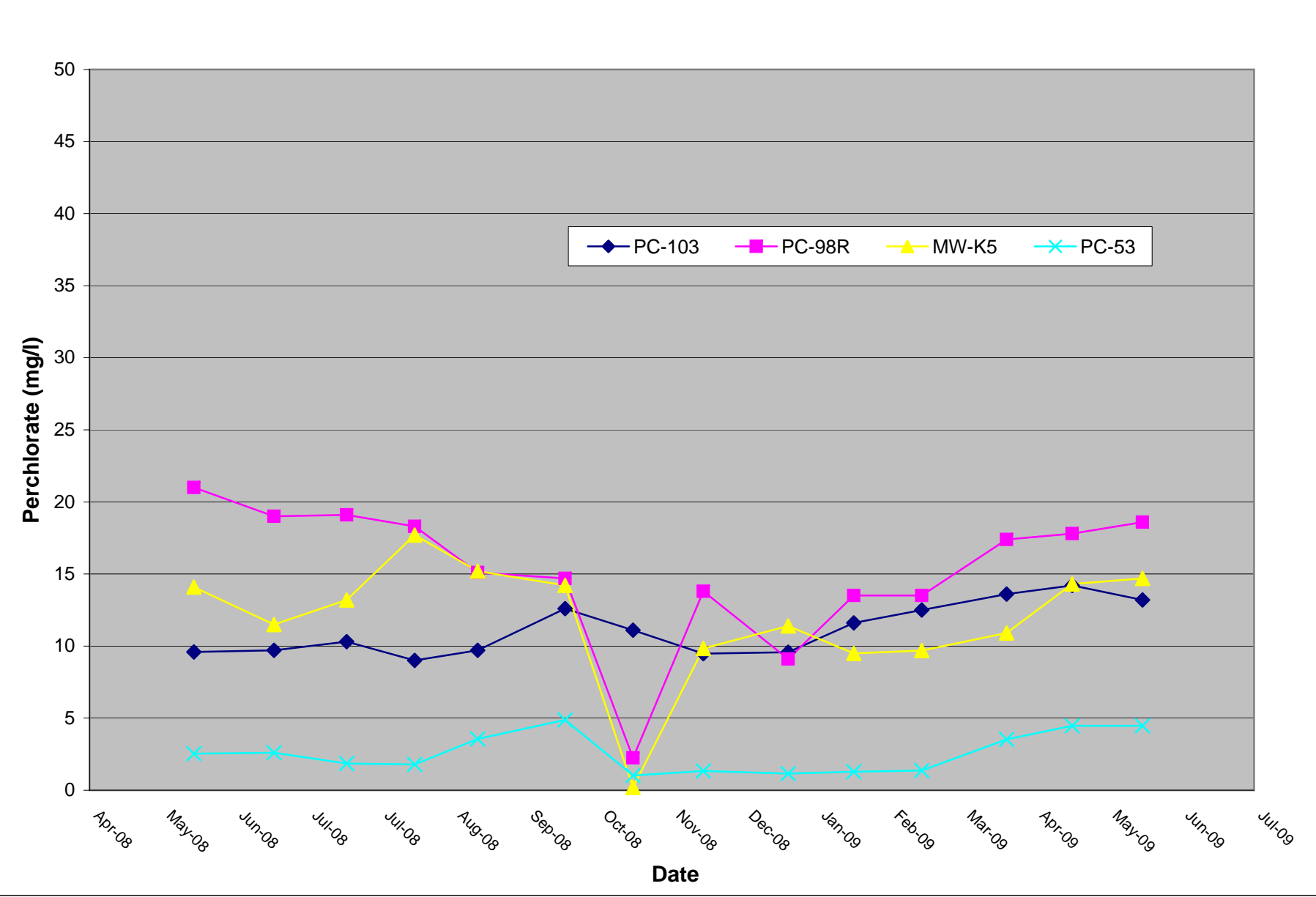


Figure 21: City of Henderson WRF Well Line Perchlorate Concentration Section Graph

Tronox LLC, Henderson, Nevada

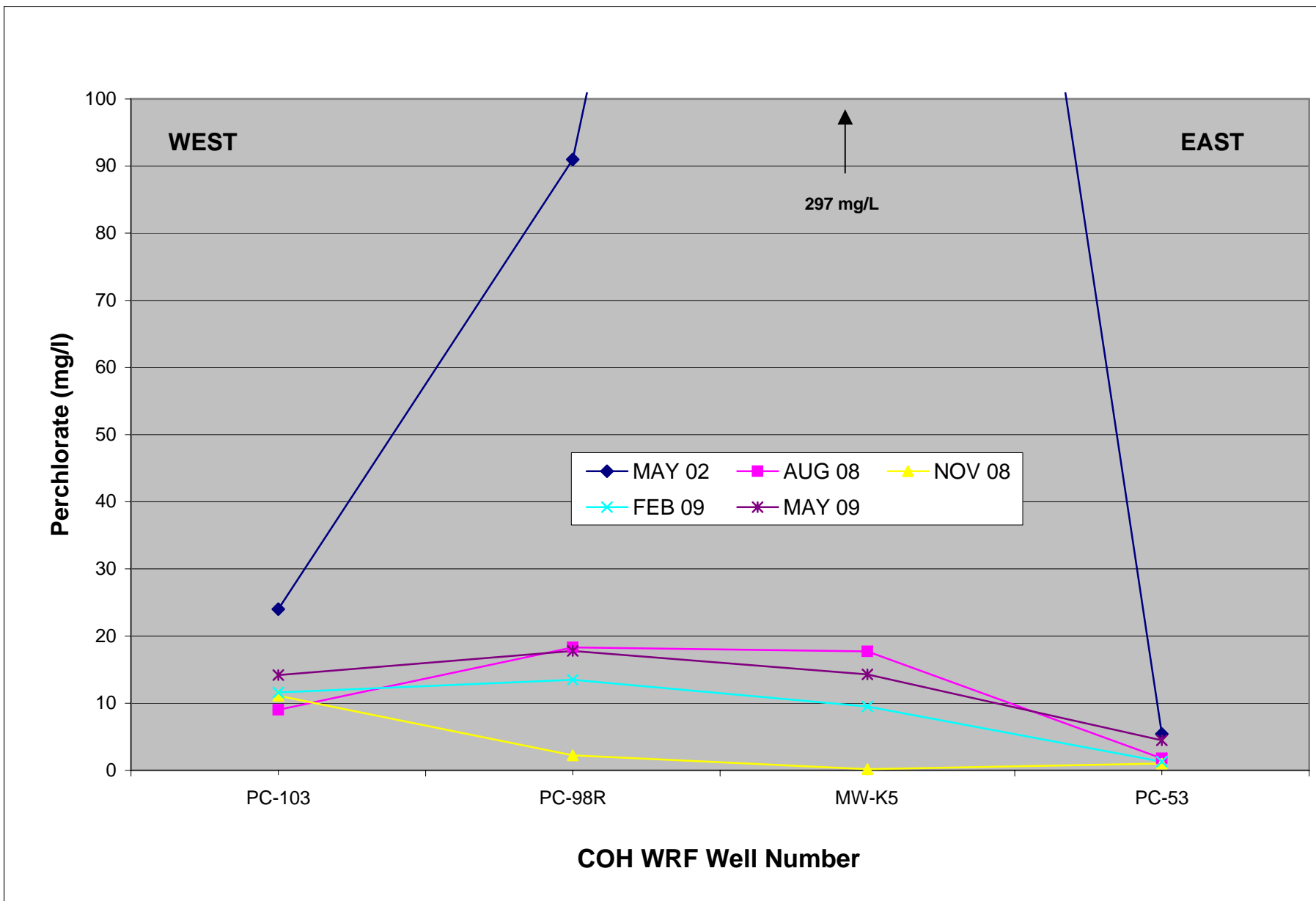


Figure 22: Well PC-98R Perchlorate Concentration vs. Water Elevation Trend Graph

Tronox LLC, Henderson, Nevada

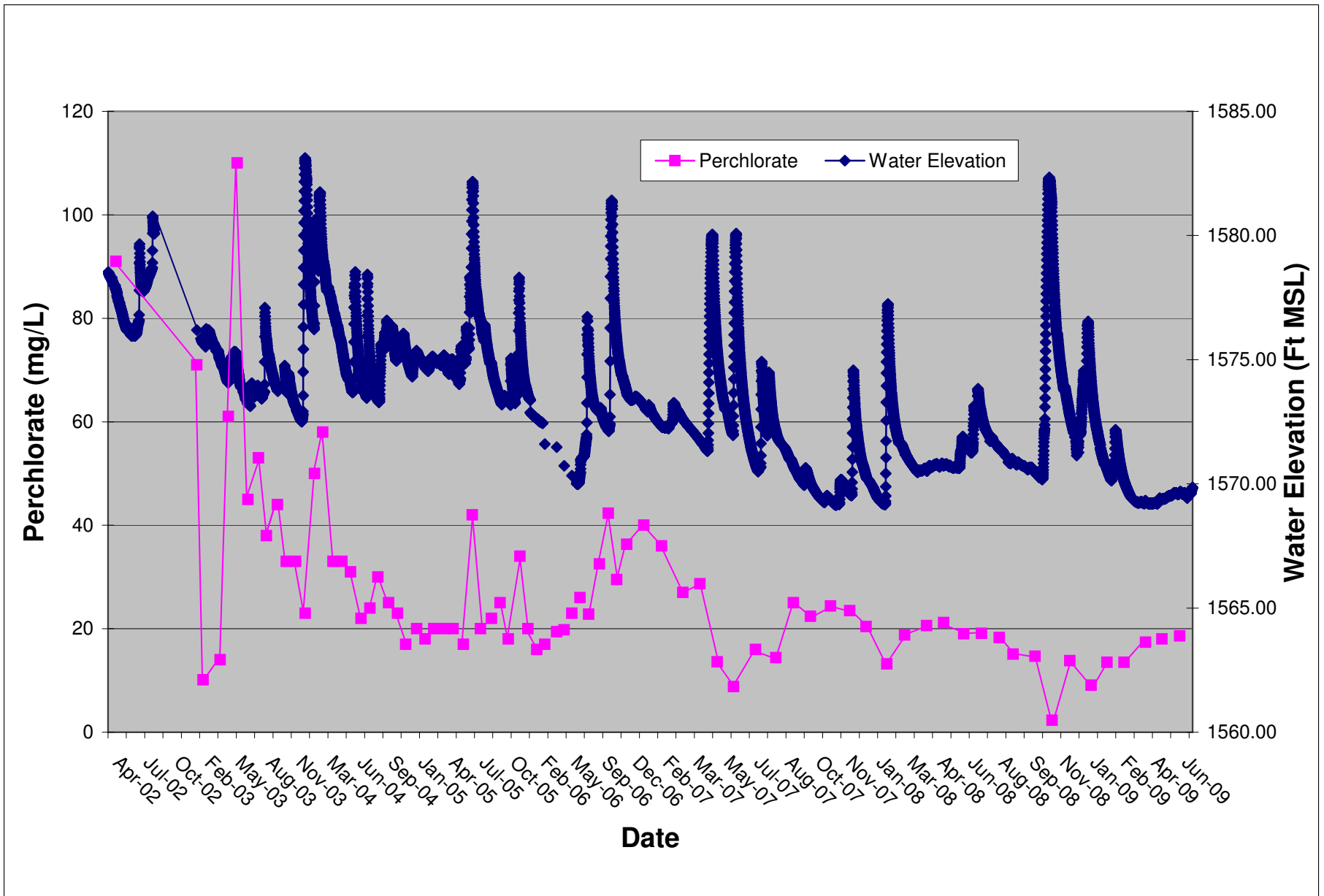


Figure 23: Lower Ponds Well Line Perchlorate Concentration Trend Graph

Tronox LLC, Henderson, Nevada

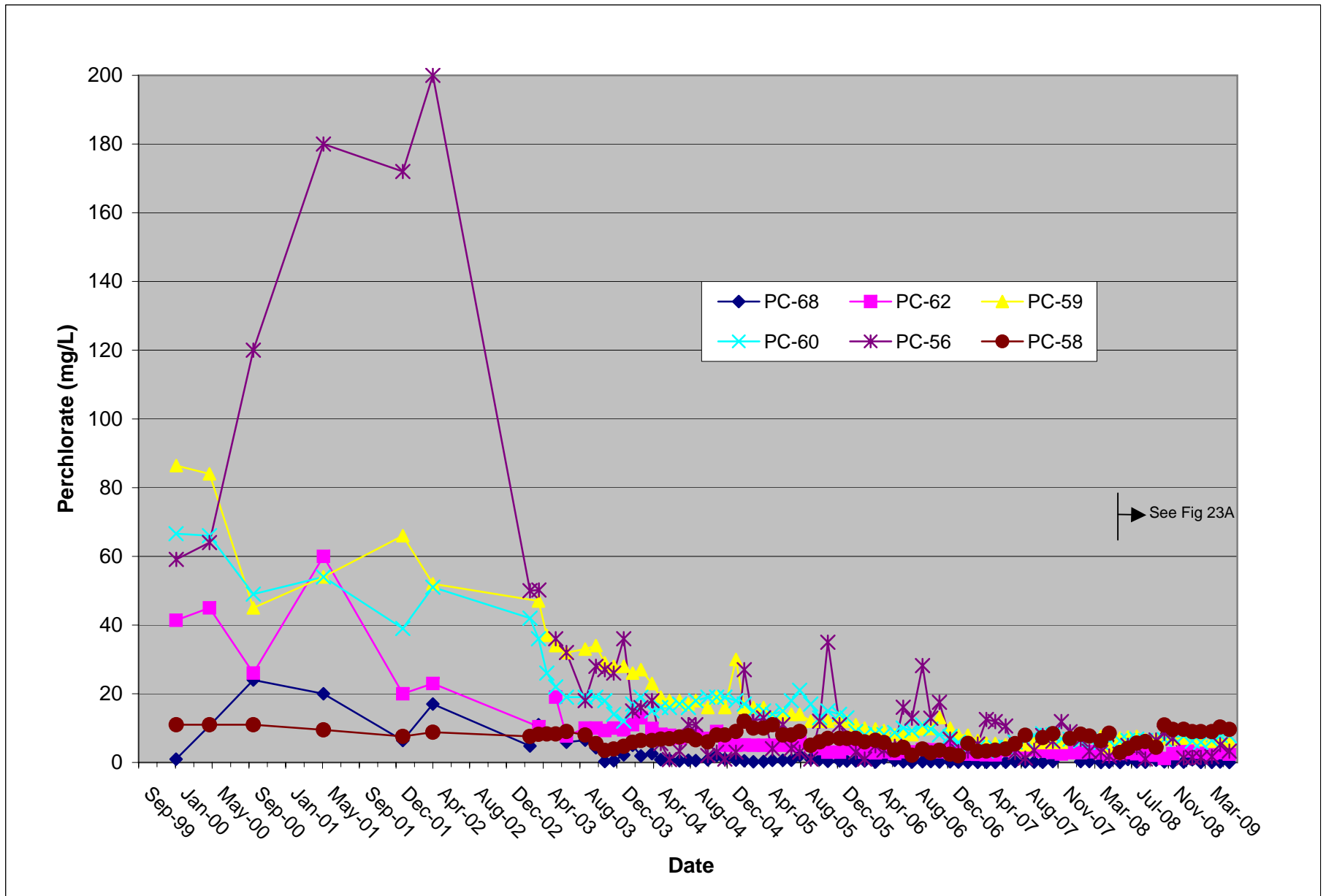


Figure 23A: Lower Ponds Well Line Perchlorate Concentration Trend Graph, May 2008 - June 2009
 Tronox LLC, Henderson, Nevada

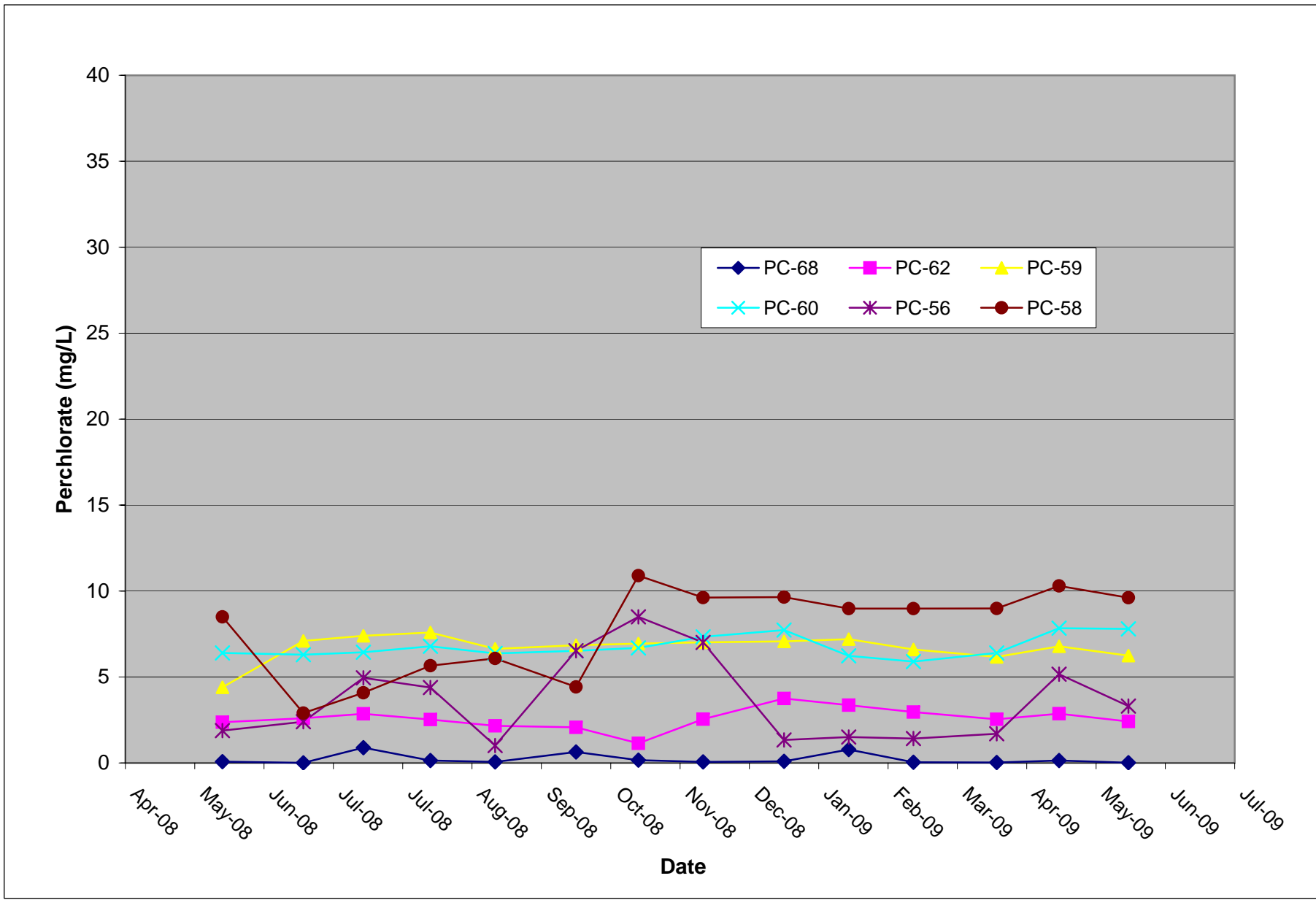


Figure 24: Lower Ponds Well Line Perchlorate Concentration Section Graph

Tronox LLC, Henderson, Nevada

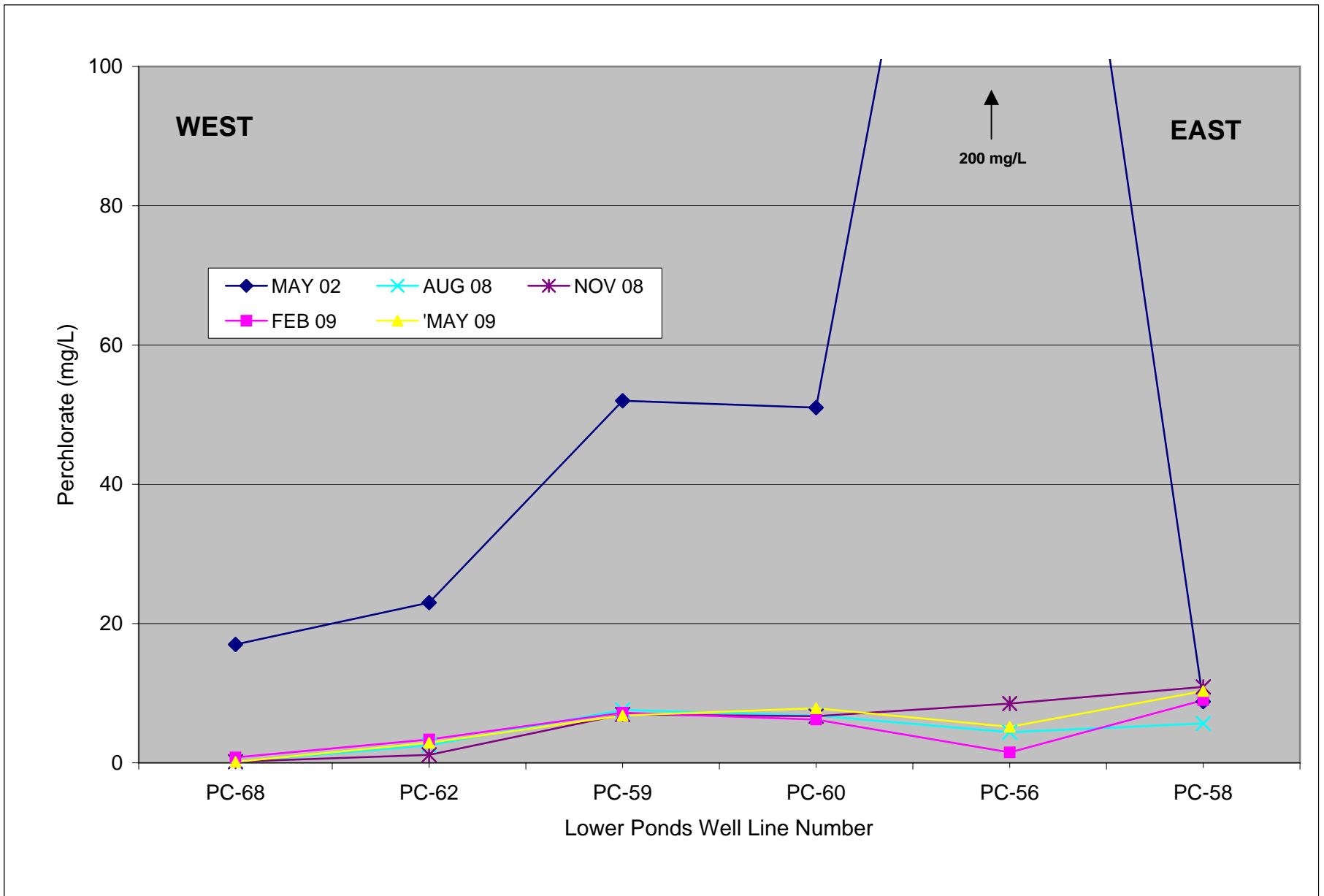


Figure 25: Seep Well Field Perchlorate Concentration Trend Graph

Tronox LLC, Henderson, Nevada

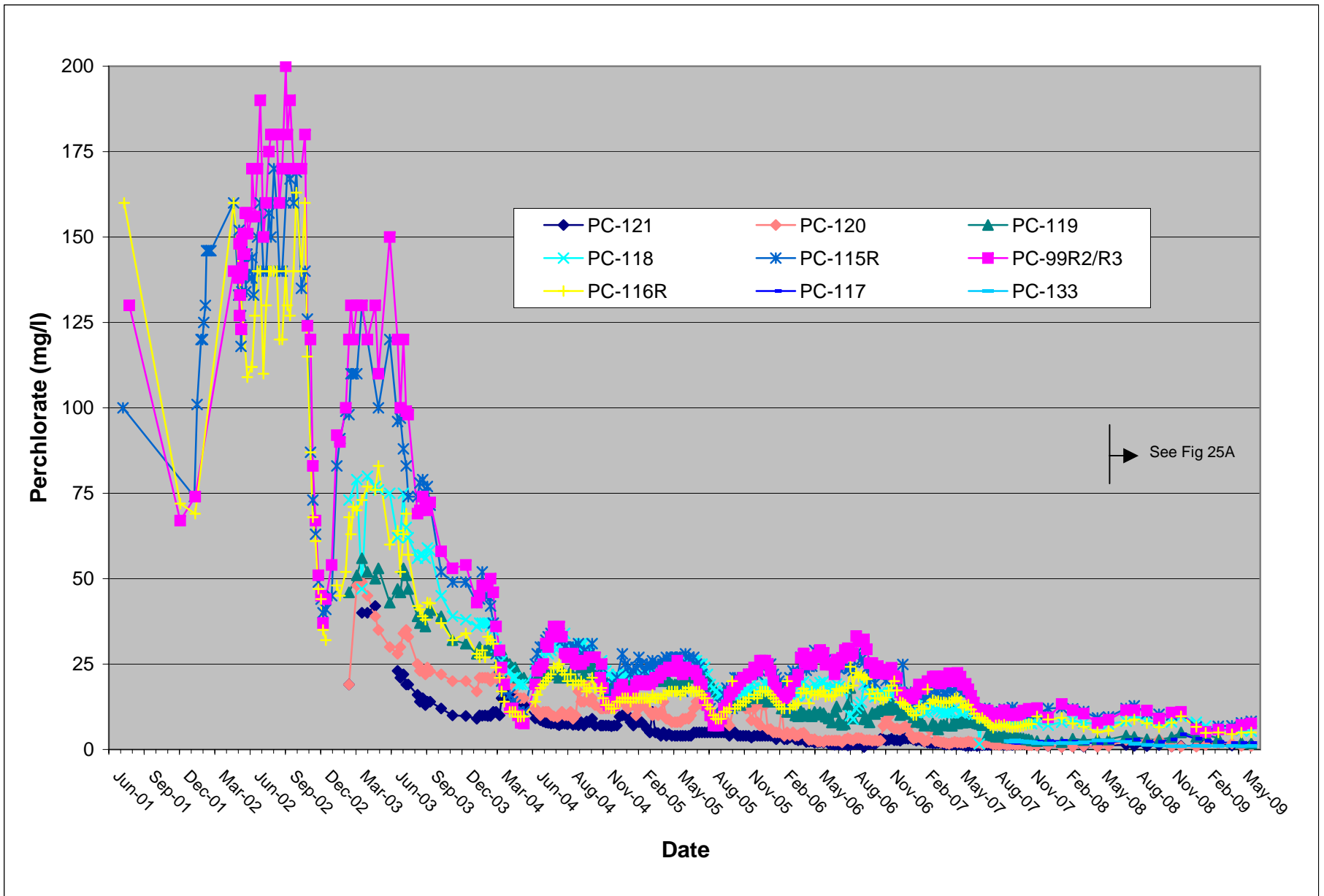


Figure 25A: Seep Well Field Perchlorate Concentration Trend Graph, May 2008 - June 2009
 Tronox LLC, Henderson, Nevada

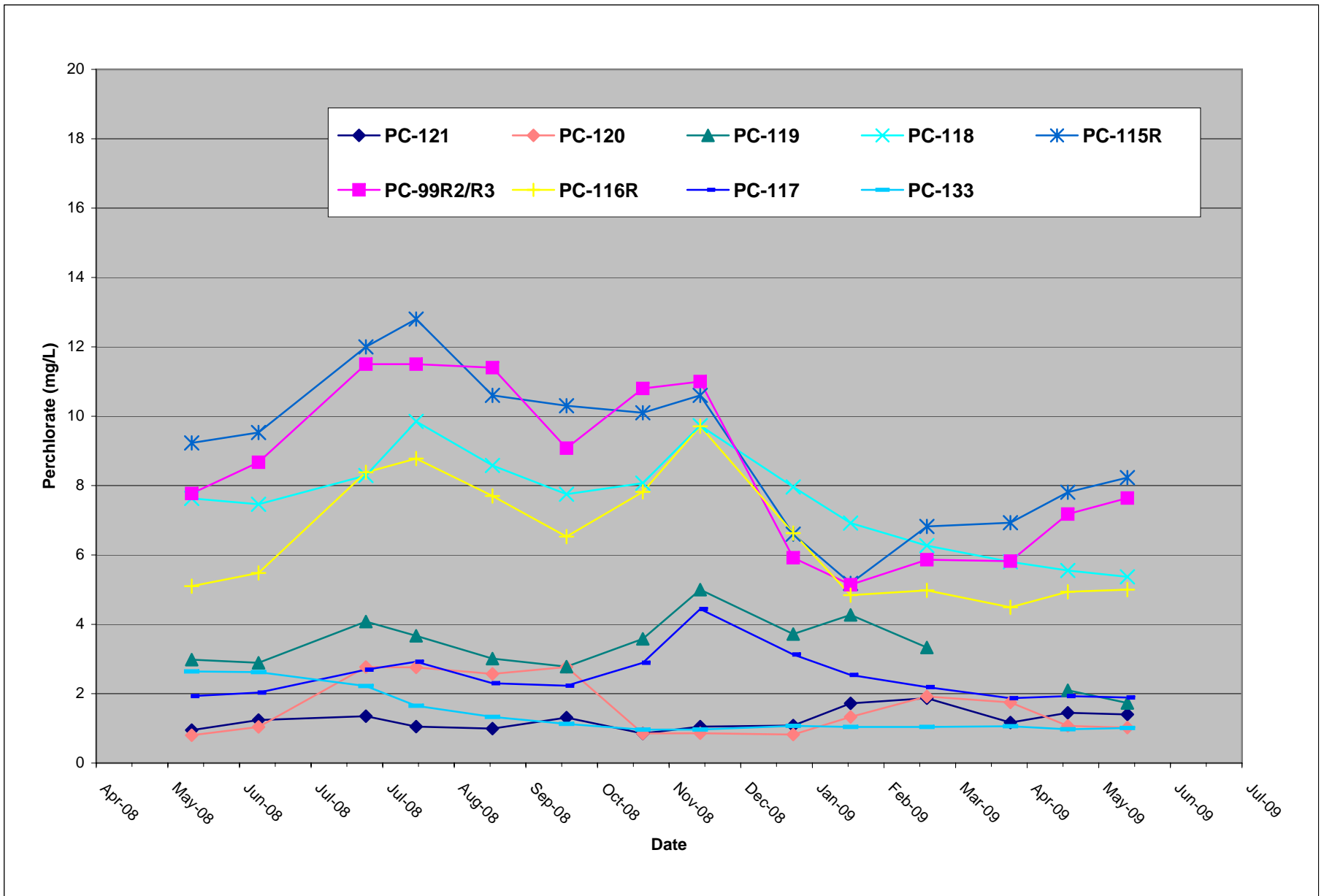


Figure 26: Well PC-97 Perchlorate Concentration vs. Water Elevation Trend Graph

Tronox LLC, Henderson, Nevada

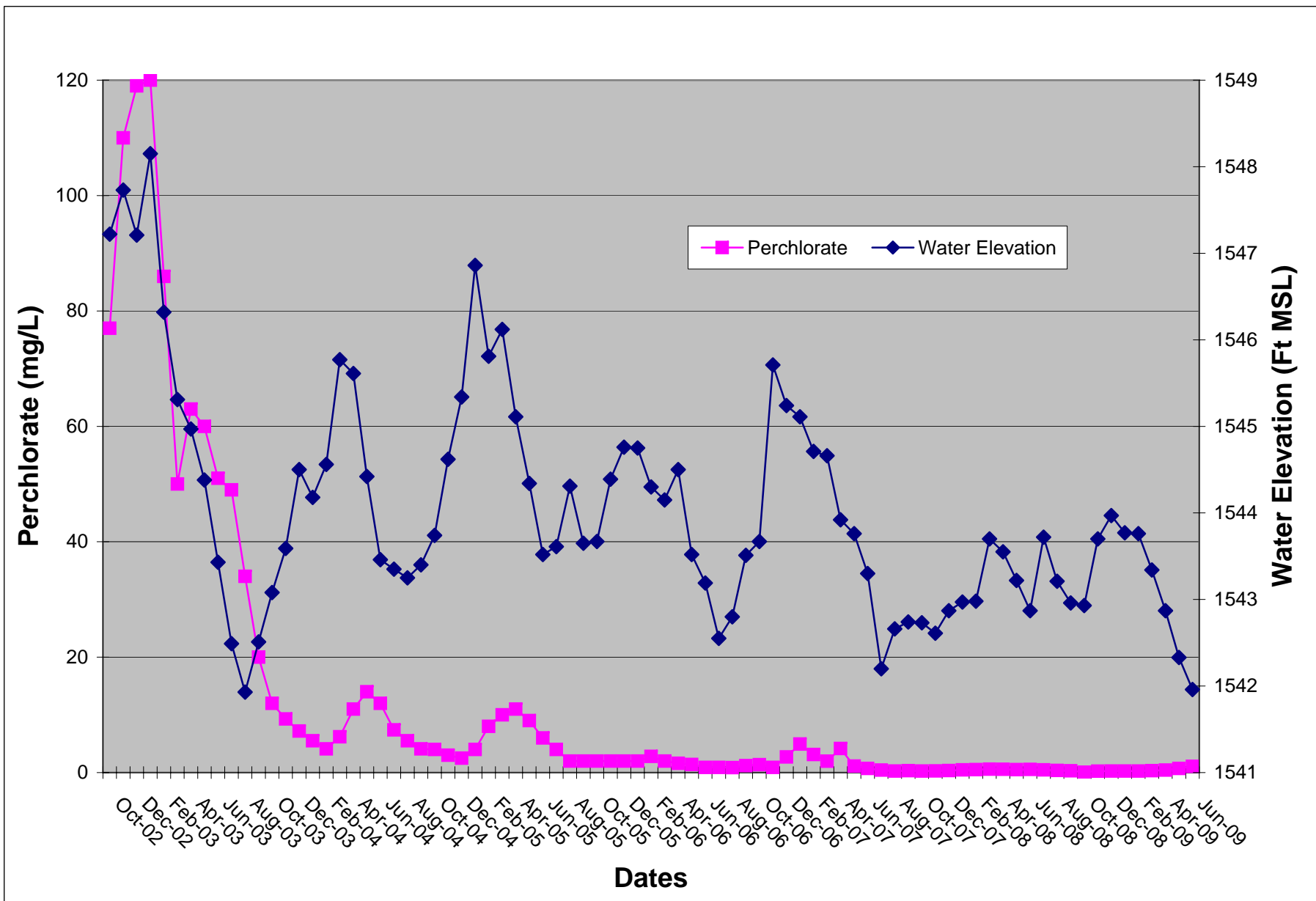


Figure 27: Seep Well Field Perchlorate Concentration Section Graph

Tronox LLC, Henderson, Nevada

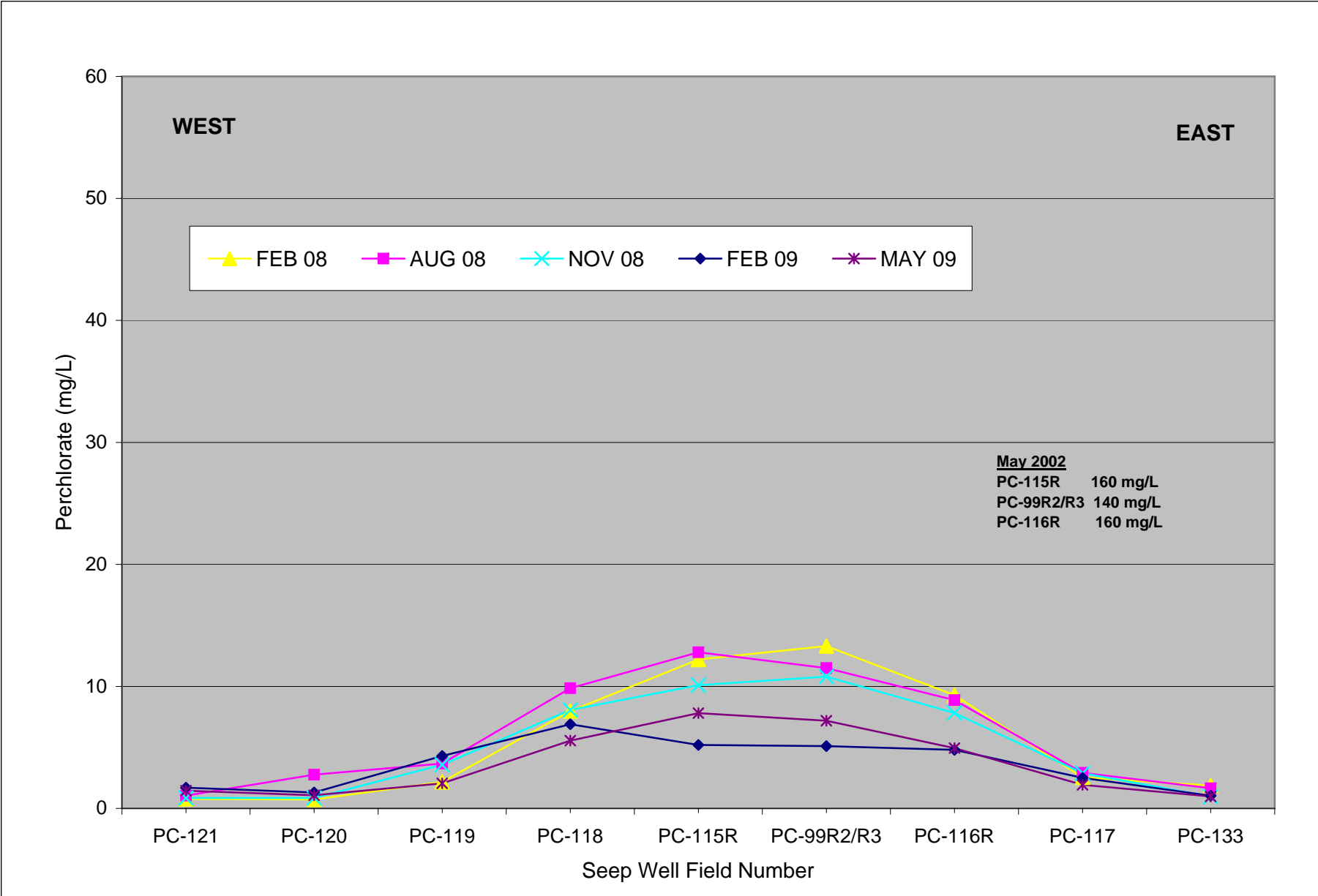


Figure 28: Seep Well Field Total Dissolved Solids Section Graph

Tronox LLC, Henderson, Nevada

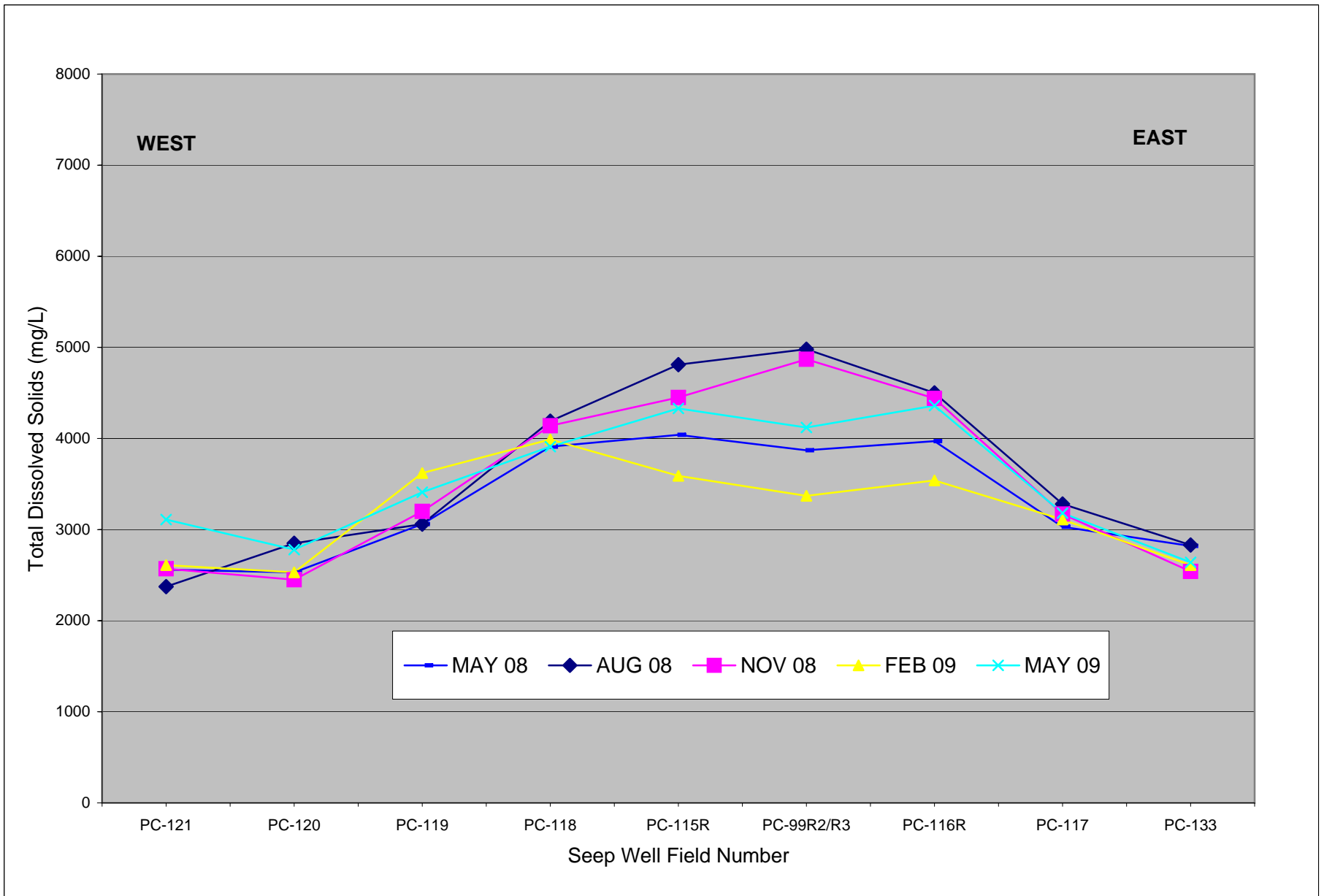


Figure 29: Seep Area Average Perchlorate Concentration and Mass Removed
Tronox LLC, Henderson, Nevada

