



Fredrick R. Stater
Plant Manager

(702) 651-2233
Fax (702) 651-2310
Rick.Stater@tronox.com

January 27, 2009

Compliance Coordinator
Nevada Division of Environmental Protection
901 South Stewart Street, Suite 4001
Carson City, NV 89701-5249

SUBJECT: Fourth Quarter 2008 DMR – Permit # NEV2001516

Tronox LLC (Tronox) maintains a Permit # NEV2001516 covering synthetically lined pond operation in Henderson, Nevada. While there was no discharge to receiving waters from the covered ponds, the attached Discharge Monitoring Reports, DMR's, (Attachment 1) and accompanying tables provide operational information.

The new level controlled leak collection sump pump for the WC-East Pond leak detection sump was installed July 24, 2008. Having a level indication along with pump flow meter is proving helpful for monitoring and identifying leaks between the primary and secondary liners. Preliminary data collected indicates the bottom of the pond does not have any leaks. To check the upper sections of the liners the pond level was slowly increased over the 4th quarter. No leakage was detected in October or November, but flow into the leak detection sump was recorded in December 2008 (See Table 2b.). Currently, the leak detection sump is continuing to be monitored and a pond liner repair schedule is being evaluated for later this year, when the pond level can be lowered below the level where leakage was detected.

Should you have any questions concerning this report, please contact Mike Skromyda at (702) 651-2228 or michael.skromyda@tronox.com . Thank you.

Sincerely,

Fredrick R. Stater
Plant Manager

Overnight Mail

cc: Mike Skromyda
John Hatmaker

Attachments

Tronox. Adding value beyond the product.

ATTACHMENT 1

**Discharge Monitoring
Reports**

October 2008

November 2008

December 2008


PERMITTEE NAME/ADDRESS: NATIONAL POLLUTANT DISCHARGE ELIMINATION SYSTEM (NPDES)
 NAME: Tronox LLC
 ADDRESS: PO BOX 55
 HENDERSON, NV 89009-7000

DISCHARGE MONITORING REPORT (DMR)
 PERMIT NUMBER: NEV2001516
 DISCHARGE NUMBER: 001

MONITORING PERIOD
 FROM 08 | 11 | 01 TO 08 | 11 | 30

NO DISCHARGE

NOTE: Read instructions before completing this form.

PARAMETER	SAMPLE MEASUREMENT PERMIT REQUIREMENT	QUANTITY OR LOADING			QUALITY OR CONCENTRATION			NO. EX	FREQUENCY OF ANALYSIS	SAMPLE TYPE	
		AVERAGE	MAXIMUM	UNITS	30 Day Ave (mg/l)	7 Day Ave (mg/l)	30 Day Ave (lb/day)				UNIT
Flow	MEASUREMENT	Please see attached Table 1			MGD	-----			0	Monthly	Flow Meter
	PERMIT REQUIREMENT	Monitor and Report				-----					
Leak Detection Information	MEASUREMENT	-----				Please see attached Table 2			0	Bi-Monthly	Discrete
	PERMIT REQUIREMENT	-----				Monitor and Report					
Pond Water Level	MEASUREMENT	-----				Please see attached Table 1			0	Bi-Monthly	Discrete
	PERMIT REQUIREMENT	-----				Monitor and Report					
Storage Volume	MEASUREMENT	-----				Please see attached Table 1			0	Bi-Monthly	Calculation
	PERMIT REQUIREMENT	-----				Monitor and Report					
Water Balance Information	MEASUREMENT					Please see attached Table 1			0	Monthly	Calculation
	PERMIT REQUIREMENT					Monitor and Report					
	MEASUREMENT										
	PERMIT REQUIREMENT										
I CERTIFY UNDER PENALTY OF LAW THAT THIS DOCUMENT AND ALL ATTACHMENTS WERE PREPARED UNDER MY DIRECTORSHIP OR SUPERVISION IN ACCORDANCE WITH THE REQUIREMENTS OF THE PERMIT. I AM AWARE THAT THERE ARE SIGNIFICANT PENALTIES FOR SUBMITTING FALSE INFORMATION, INCLUDING THE POSSIBILITY OF FINE AND IMPRISONMENT FOR KNOWING VIOLATIONS.											
NAME / TITLE: Fredrick R. Stater Plant Manager TYPED OR PRINTED											
SIGNATURE OF PRINCIPAL EXECUTIVE OFFICER:  OFFICER OR AUTHORIZED AGENT											
TELEPHONE: 702-651-2200 DATE: 09 01 27											
AREA CODE NUMBER: 702-651-2200 YEAR: 09 MO: 01 DAY: 27											

COMMENT AND EXPLANATION OF ANY VIOLATIONS
 Facility Ponds
 (Reference all attachments here)

PERMITTEE NAME/ADDRESS: NATIONAL POLLUTANT DISCHARGE ELIMINATION SYSTEM (NPDES)
 NAME: Tronox LLC
 ADDRESS: PO BOX 55
 HENDERSON, NV 89009-7000

DISCHARGE MONITORING REPORT (DMR)
 PERMIT NUMBER: NEV2001516
 DISCHARGE NUMBER: 001

FACILITY: Tronox LLC
 LOCATION: Henderson, NV
 Attn: Susan Crowley

MONITORING PERIOD
 FROM 08 | 12 | 01 TO 08 | 12 | 31 NO DISCHARGE X

NOTE: Read instructions before completing this form.

PARAMETER	SAMPLE MEASUREMENT PERMIT REQUIREMENT	QUANTITY OR LOADING			QUALITY OR CONCENTRATION			NO. EX	FREQUENCY OF ANALYSIS	SAMPLE TYPE
		AVERAGE	MAXIMUM	UNITS	30 Day Ave (mg/l)	7 Day Ave (mg/l)	30 Day Ave (lb/day)			
Flow	SAMPLE MEASUREMENT PERMIT REQUIREMENT	Please see attached Table 1			MGD			0	Monthly	Flow Meter
Influent	SAMPLE MEASUREMENT PERMIT REQUIREMENT	Monitor and Report								
Leak Detection Information	SAMPLE MEASUREMENT PERMIT REQUIREMENT	-----						0	Bi-Monthly	Discrete
Pond Water Level	SAMPLE MEASUREMENT PERMIT REQUIREMENT	-----						0	Bi-Monthly	Discrete
Storage Volume	SAMPLE MEASUREMENT PERMIT REQUIREMENT	-----						0	Bi-Monthly	Calculation
Water Balance Information	SAMPLE MEASUREMENT PERMIT REQUIREMENT	-----						0	Monthly	Calculation
	SAMPLE MEASUREMENT PERMIT REQUIREMENT									
	SAMPLE MEASUREMENT PERMIT REQUIREMENT									
	SAMPLE MEASUREMENT PERMIT REQUIREMENT									
I HEREBY UNDER PENALTY OF LAW THAT THE DOCUMENT AND ALL ATTACHMENTS WERE PREPARED UNDER MY DIRECTION OR SUPERVISION IN ACCORDANCE WITH A SYSTEM DESIGNED TO ASSURE THAT QUALIFIED PERSONNEL PROPERLY GATHER AND EVALUATE THE INFORMATION SUBMITTED, BASED ON MY DEDICATED PERSONS WHO MANAGE THE SYSTEM OR THOSE PERSONS DIRECTLY RESPONSIBLE FOR GATHERING THE INFORMATION, THE INFORMATION SUBMITTED IS, TO THE BEST OF MY KNOWLEDGE AND BELIEF, TRUE, ACCURATE, AND COMPLETE. I AM AWARE THAT THERE ARE SIGNIFICANT PENALTIES FOR SUBMITTING FALSE INFORMATION, INCLUDING THE POSSIBILITY OF FINE AND IMPRISONMENT FOR KNOWING VIOLATIONS.										
NAME / TITLE PRINCIPAL EXECUTIVE OFFICER Fredrick R. Stater Plant Manager										TELEPHONE 702-651-2200
TYPED OR PRINTED (Reference all attachments here)										DATE 09 01 27
COMMENT AND EXPLANATION OF ANY VIOLATIONS Facility Ponds										

ATTACHMENT 2

**Pond Monitoring
Results**

Table 1a – Mn-1 Pond Monitoring Information

Date	Flow Into Pond (MGD)	Storage Volume (thousand gallons)	Water Balance (thousand gallon)	Discharge from Pond (thousands gallons)
10/13/08		1,729		
10/31/08	0.0	1,729	273	0.0
11/17/08		1,729		
11/26/08	0.0	1,762	183	0.0
12/05/08		1,762		
12/12/08	0.0	1,762	105	0.0

Table 2a – Mn-1 Pond Leak Detection Monitoring

Date	Volume in Detection Well (gallons pumped)
10/13/08	0.0
10/31/08	0.0
11/17/08	0.0
11/26/08	0.0
12/05/08	0.0
12/12/08	0.0

Table 1b – WC East Pond Monitoring Information

Date	Flow Into Pond (MGD)	Storage Volume (thousand gallons)	Water Balance (thousand gallon)	Discharge from Pond (thousand gallons)
10/13/08		6,734		
10/31/08	0.187	7,269	-296	0.0
11/17/08		6,713		
11/26/08	0.162	7,280	-758	0.0
12/05/08		7,459		
12/12/08	0.193	7,765	462	0.0

Table 2b – WC-East Pond Leak Detection Monitoring

Date	Volume in Detection Well (gallons pumped)
10/01/08 thru 10/15/08	North – 0.0
" "	South – 0.0
10/16/08 thru 10/31/08	North – 0.0
" "	South – 0.0
11/01/08 thru 11/15/08	North – 0.0
" "	South – 0.0
11/16/08 thru 11/30/08	North – 0.0
" "	South – 0.0
12/01/08 thru 12/15/08	North – 918
" "	South – 0.0
12/16/08 thru 12/31/08	North – 5,111
" "	South – 0.0

Note: The new leak detection sump pump (with level sensor) was installed on July 24, 2008. The sump level and pump rate are continuously monitored and recorded on a data logger.

Table 1c – WC-West Pond Monitoring Information

Date	Flow Into Pond (MGD)	Storage Volume (thousands gallons)	Water Balance (thousands gallon)	Discharge from Pond (thousand gallons)
10/13/08		7,834		
10/31/08	0.012	7,912	129	0.0
11/17/08		7,970		
11/26/08	0.012	8,048	45	0.0
12/05/08		8,117		
12/12/08	0.009	8,147	145	0.0

Table 2c – WC-West Pond Leak Detection Monitoring

Date	Volume in Detection Well (gallons pumped)
10/13/08	North – 0.0
10/13/08	South – 0.0
10/31/08	North – 0.0
10/31/08	South – 0.0
11/17/08	North – 0.0
11/17/08	South – 0.0
11/26/08	North – 0.0
11/26/08	South – 0.0
12/05/08	North – 0.0
12/05/08	South – 0.0
12/12/08	North – 0.0
12/12/08	South – 0.0

Table 1d – AP-5 Pond Monitoring Information

Date	Flow Into Pond (MGD)	Storage Volume (thousand gallons)	Water Balance (thousand gallon)	Discharge from Pond (thousand gallons)
10/01/08		613		
10/15/08	0.012	698	-27	0.0
11/03/08		727		
11/19/08	0.003	613	81	0.0
12/02/08		727		
12/15/08	0.003	786	149	0.0

Table 2d – AP-5 Pond Leak Detection Monitoring

Date	Volume in Detection Well (gallons pumped)
10/01/08	0.0
10/15/08	0.0
11/03/08	0.0
11/19/08	0.0
12/02/08	0.0
12/15/08	0.0

ATTACHMENT 3

Photographs of Ponds
(Labeled and Dated)



Figure 1. WC-East (1/9/09).



Figure 2. MN-1 (1/9/09).

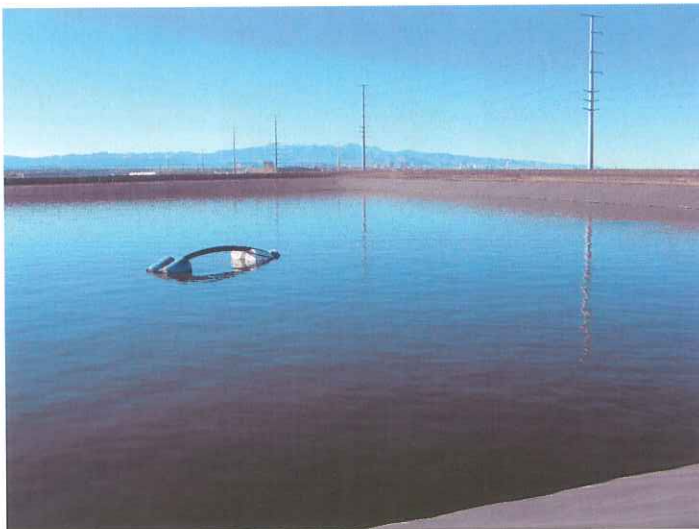


Figure 3. WC-West (1/9/09).