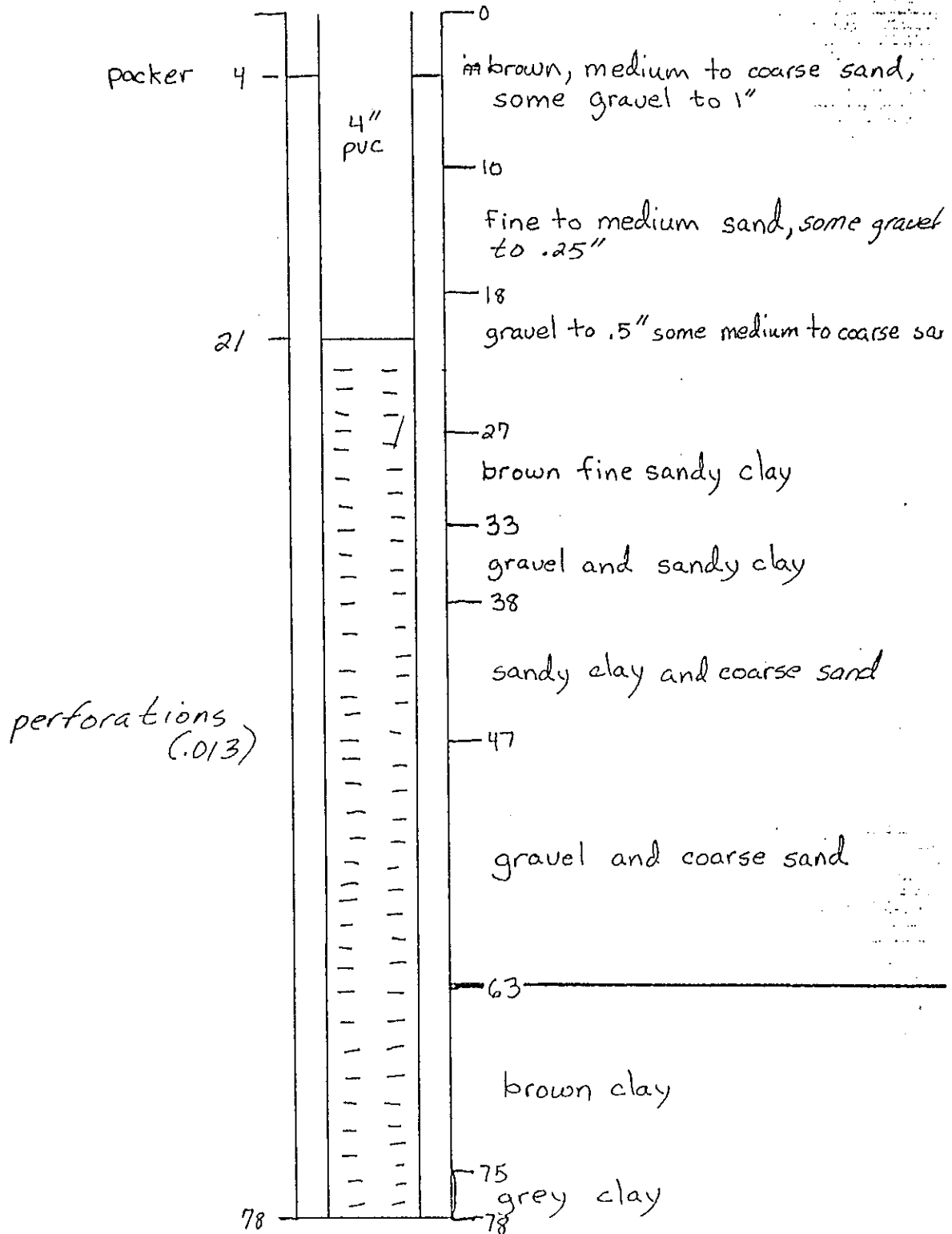
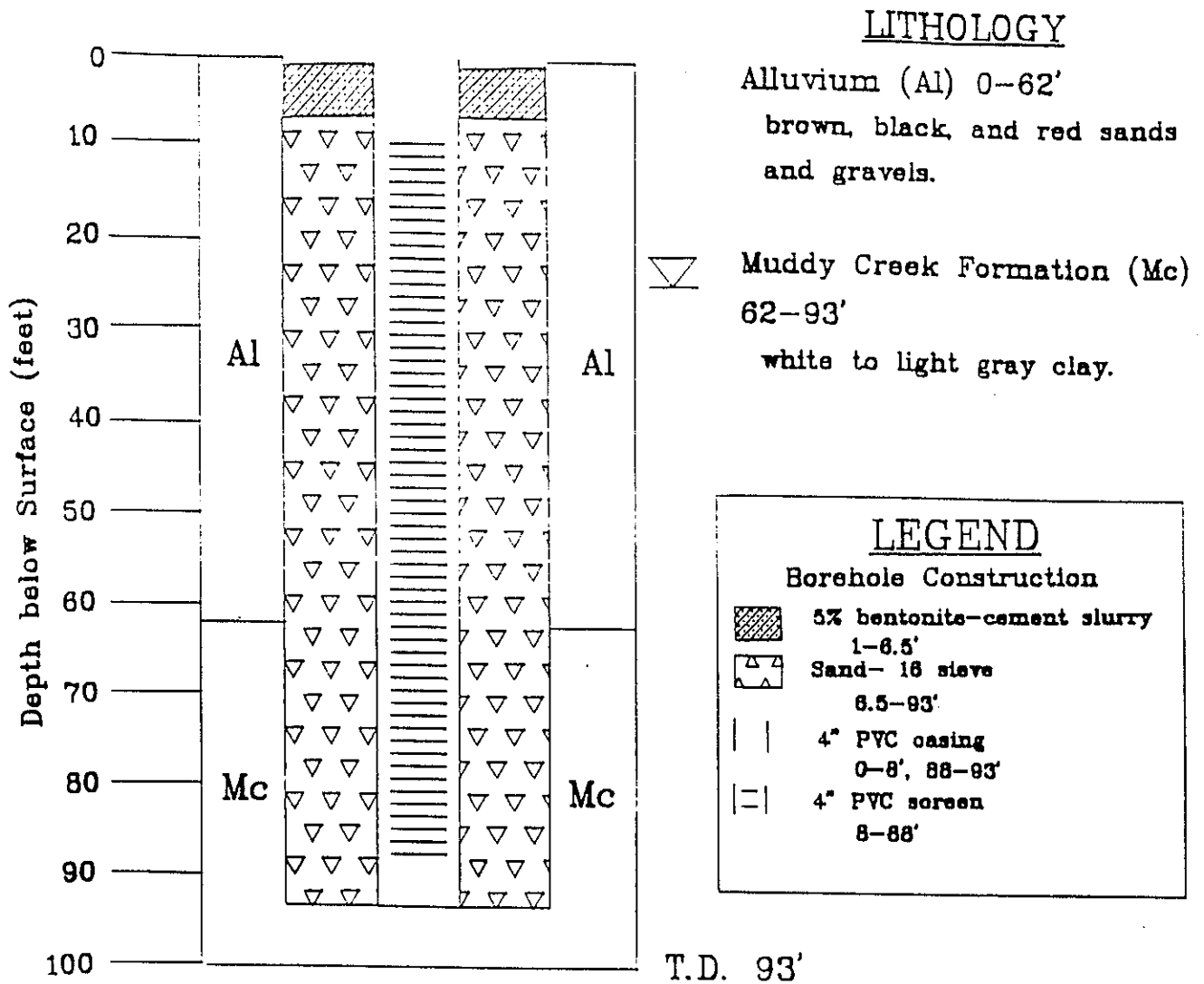


Well # 633

Location 633+00





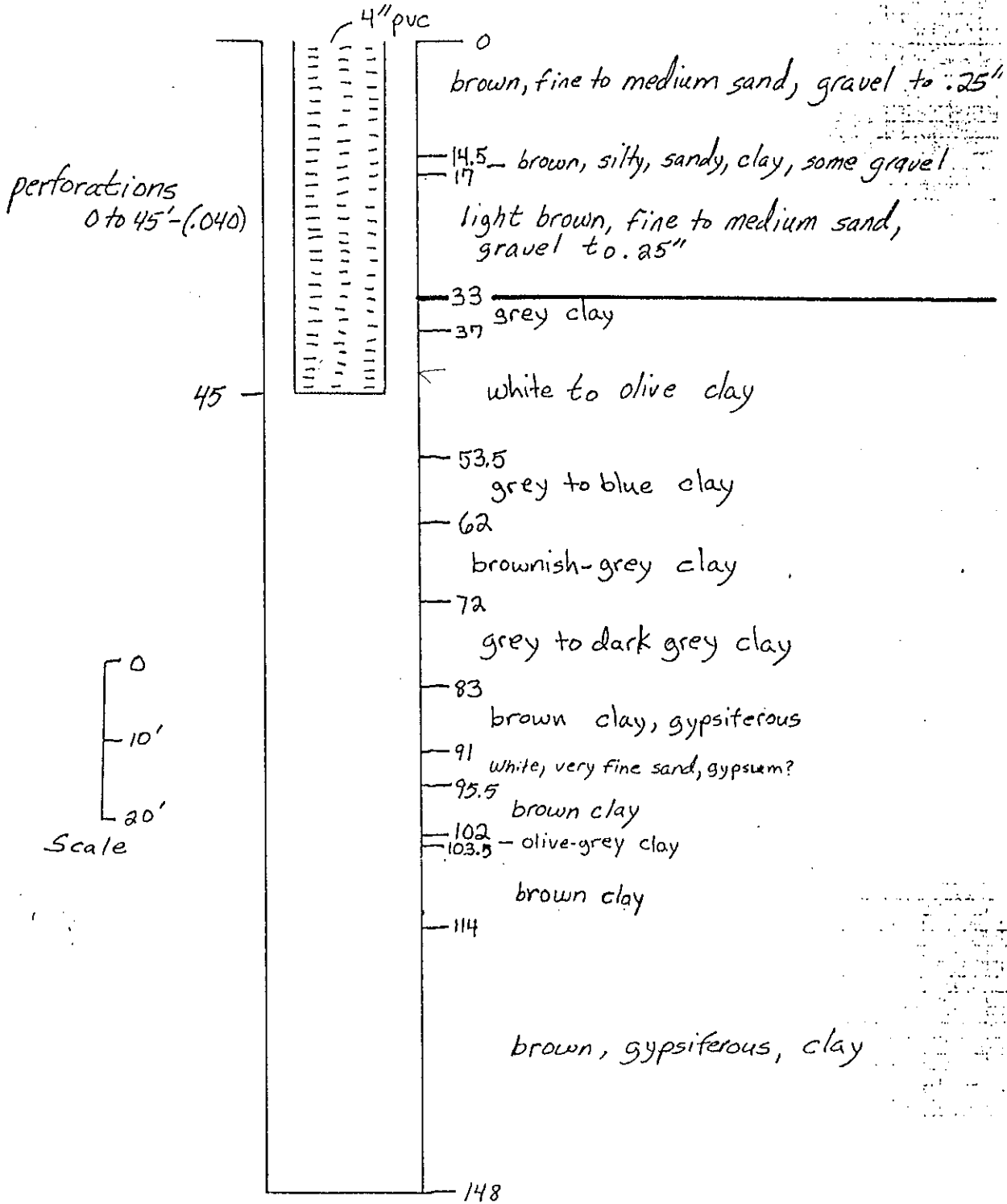
June 14, 1988- Auger 12" hole to 8'
set temporary 10" surface casing.

June 21-24, 1988- 8" hole drilled with an
air rotary rig. Install 4" well and
remove 10" surface casing.

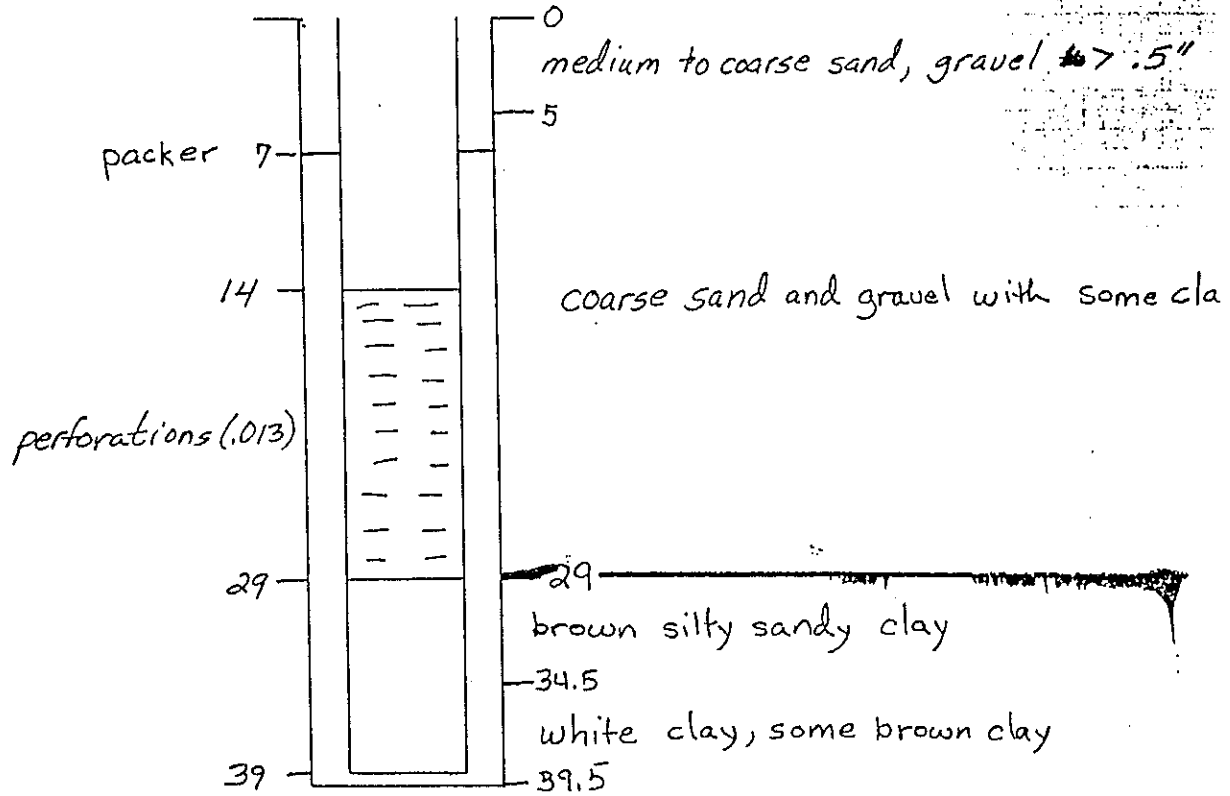
DRI/EPA COOP. Well 633-D
Pittman Lateral, Henderson, Nevada

Figure 4. Well Log and Construction- 633-D

Well # 635
 Location 635+00

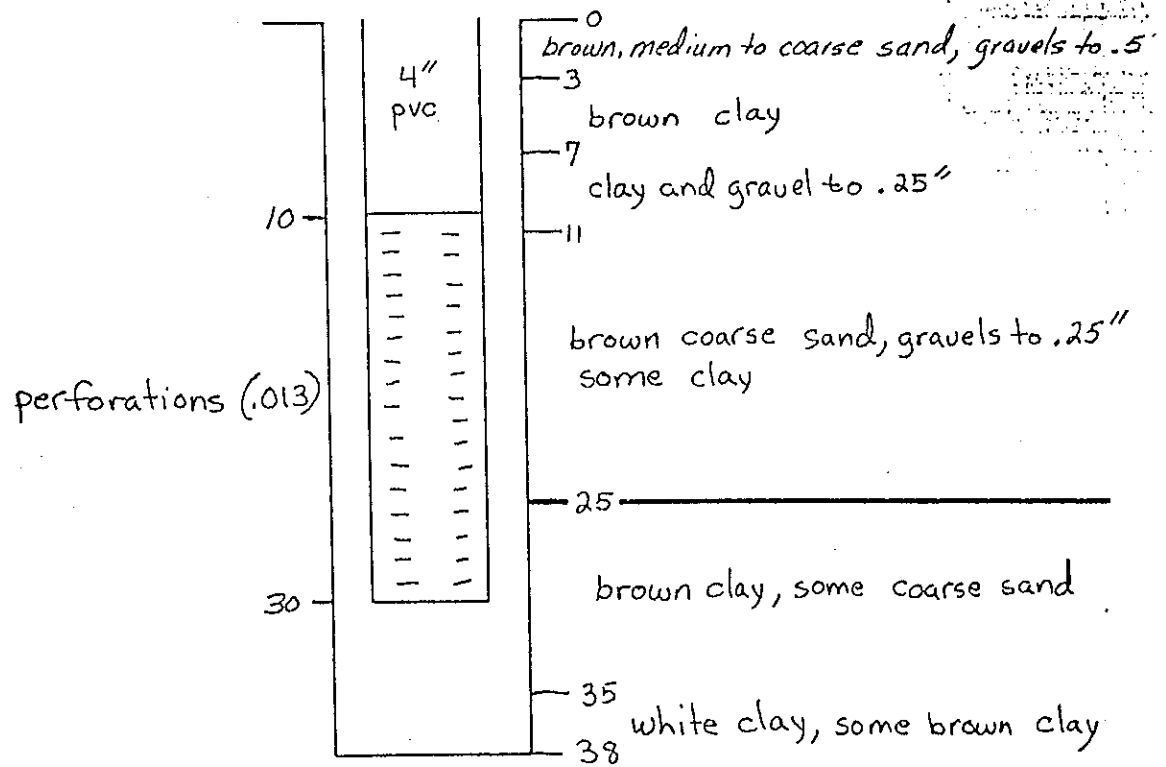


Well# 637
Location 637+00

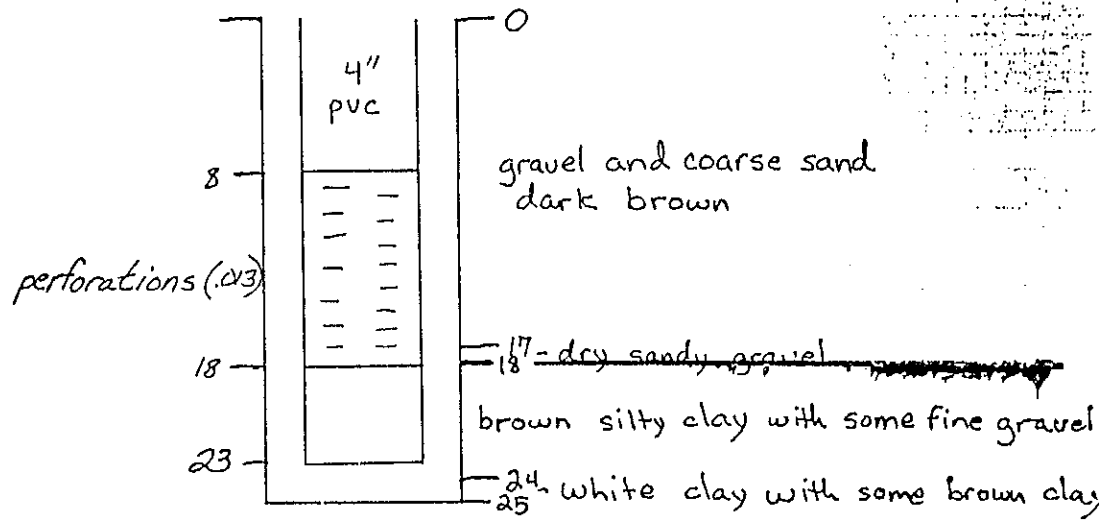


Well # 639

Location 639+00

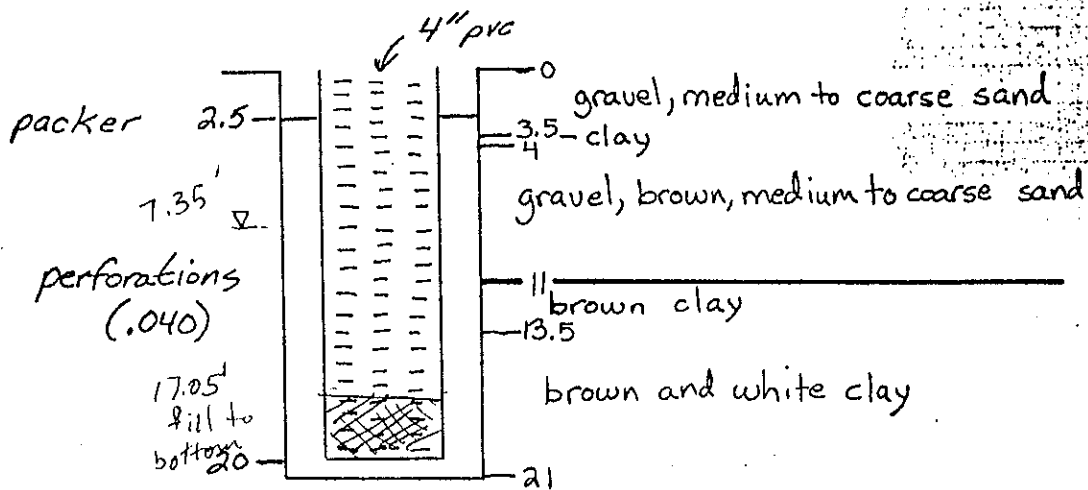


Well #641
Location 641+00



1602.6

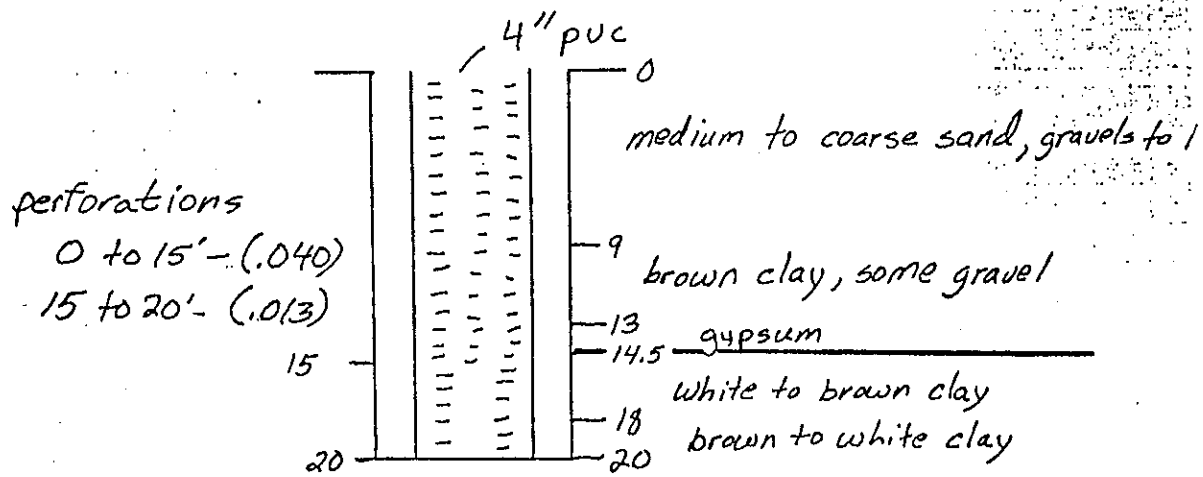
Well 643
Location 643+00



set pump @ 10.0'

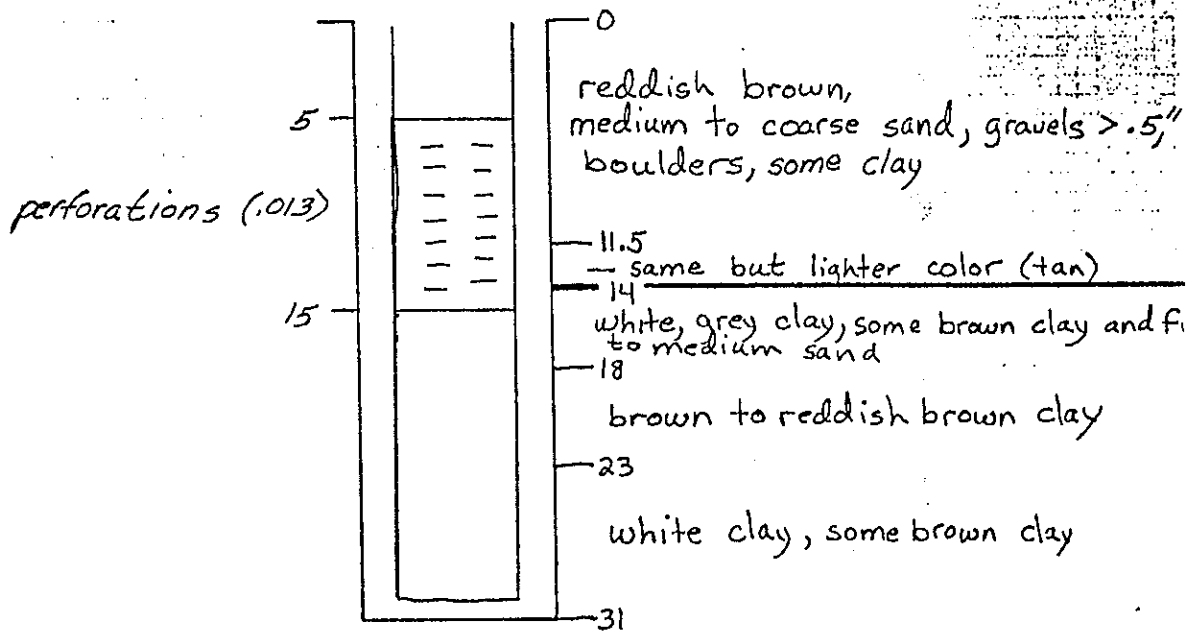
Well # 643 T

Location 643+25

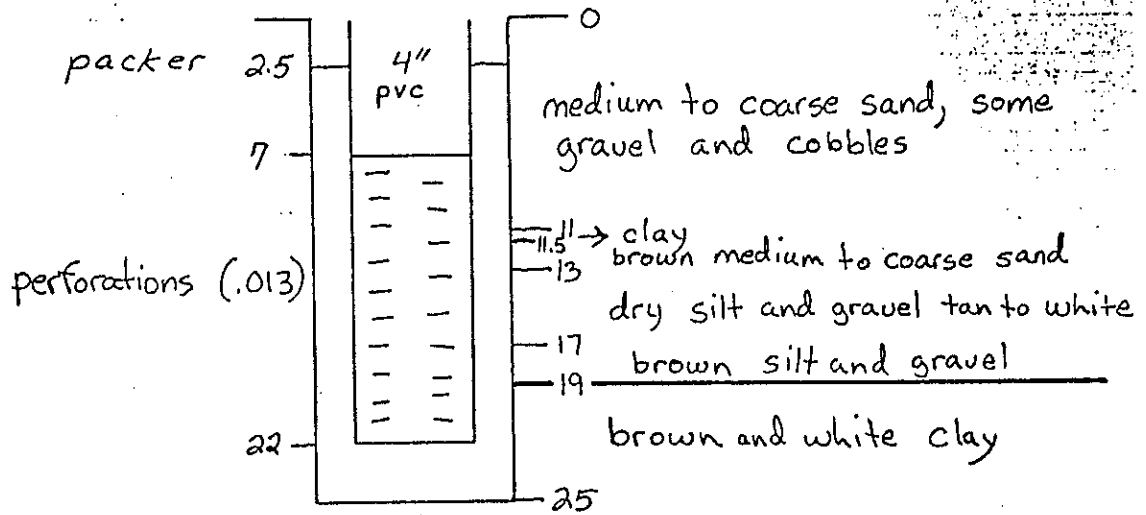


Well # 645

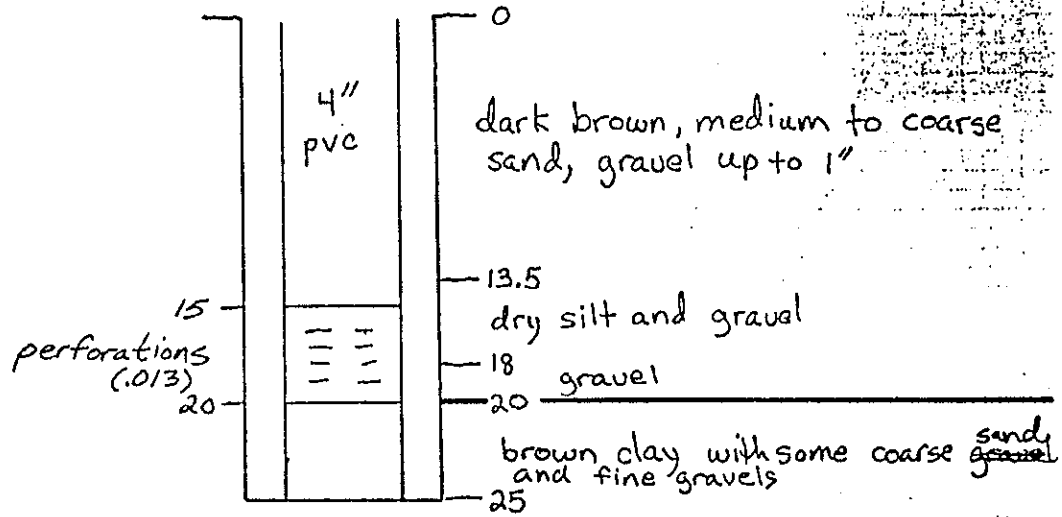
Location 645+00



Well # 647
Location 647+00

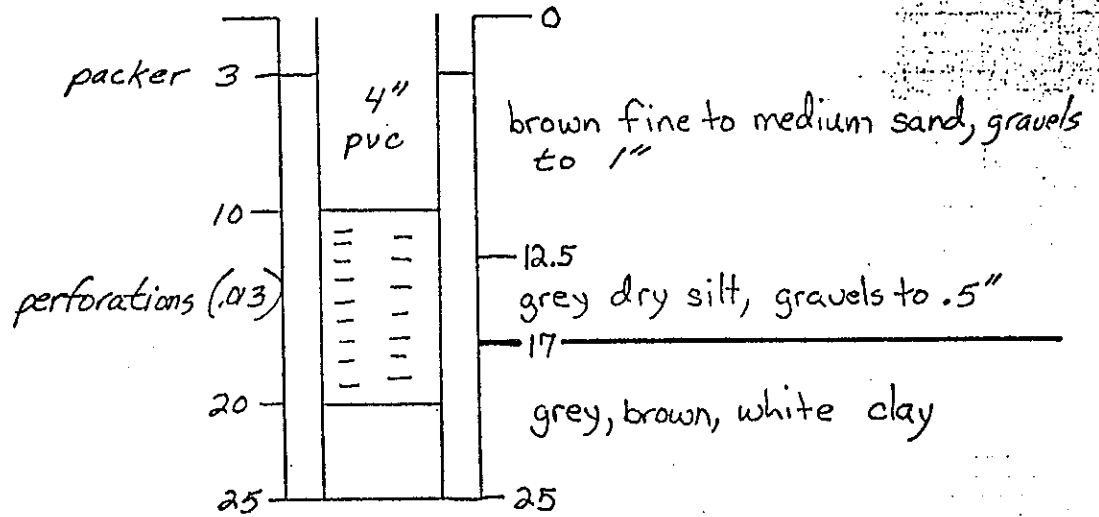


Well #649
Location 649+00



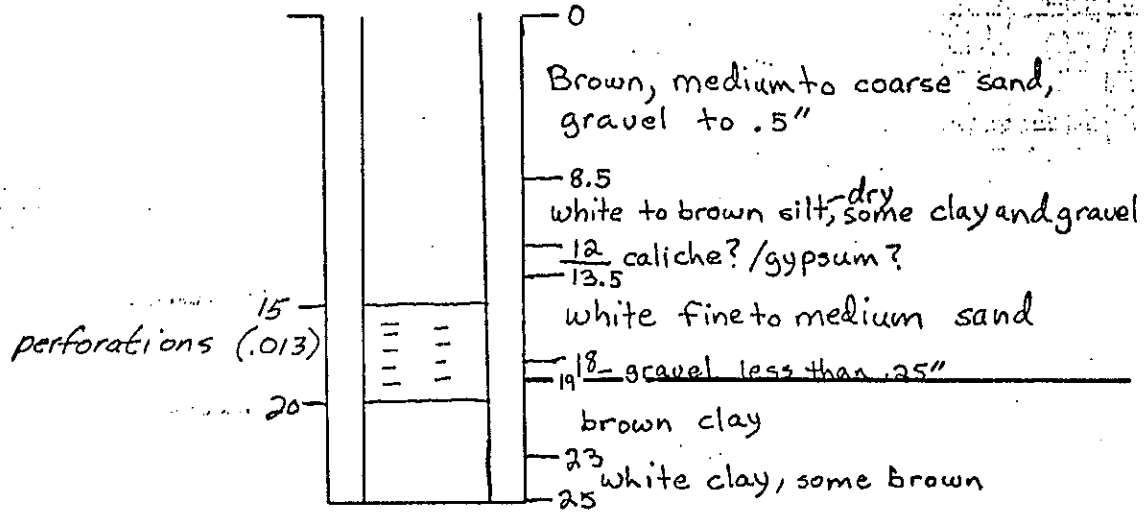
Well 651

Location 651+00



Well # 653

Location 653+00



Well 676
Location 676+00

2/26/85
EC = 3240
Depth to LT = 24.19'
Temp = 22.9°C

