

Log of Boring No. BRC-SB-15-A

BMI Site - Hydrogeologic Characterization

Henderson, Nevada



Drilling Method: Rotary Sonic
Drilling Equipment: Rotary Sonic
Drilling Contractor: Prosonic Corporation
Driller: Gerardo Chavez

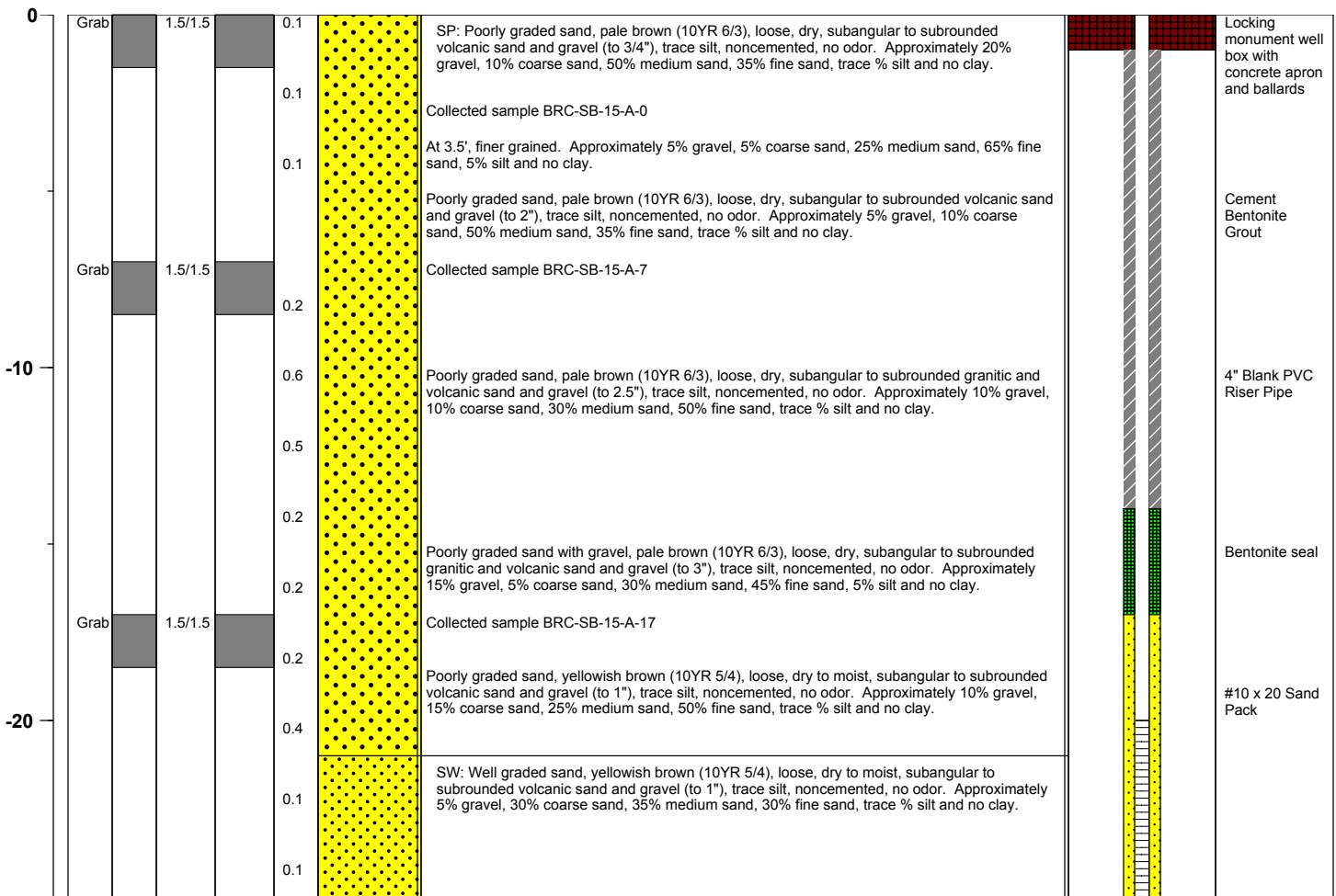
Borehole Total Depth: 78.5 ft bgs
Borehole Diameter: 8.5 in
Boring Location: Location 15 (Well ID: AA-15)
Depth to Water (ft. bgs): 27 ft bgs

Sample Type: Split-Spoon
Sample Interval: Varies

Logged By: Jennifer Wiley
Date Started: 6/19/04
Date Completed: 6/19/04

Monitoring Well Construction			
Type of Surface Seal:	Bentonite Grout	Screen Slot Size:	0.010 in
Blank Casing Type/Size:	4" Sch 80 PVC	Top of Screen (ft. bgs):	20 ft bgs
Screen Type/Size:	4" Sch 80 PVC	Bottom of Screen (ft. bgs):	40 ft bgs
Transition Sand Type:	N/A	Type of Sand Pack:	#2 x 12

Depth Elevation (MSLD)	Sample Type	Sample Interval	Sample Recovery (feet)	Sample Retained for Analysis	PID	Lithology	Soil Description	Well Construction
------------------------	-------------	-----------------	------------------------	------------------------------	-----	-----------	------------------	-------------------



Project No. 3850360

Log of Boring: BRC-SB-15-A

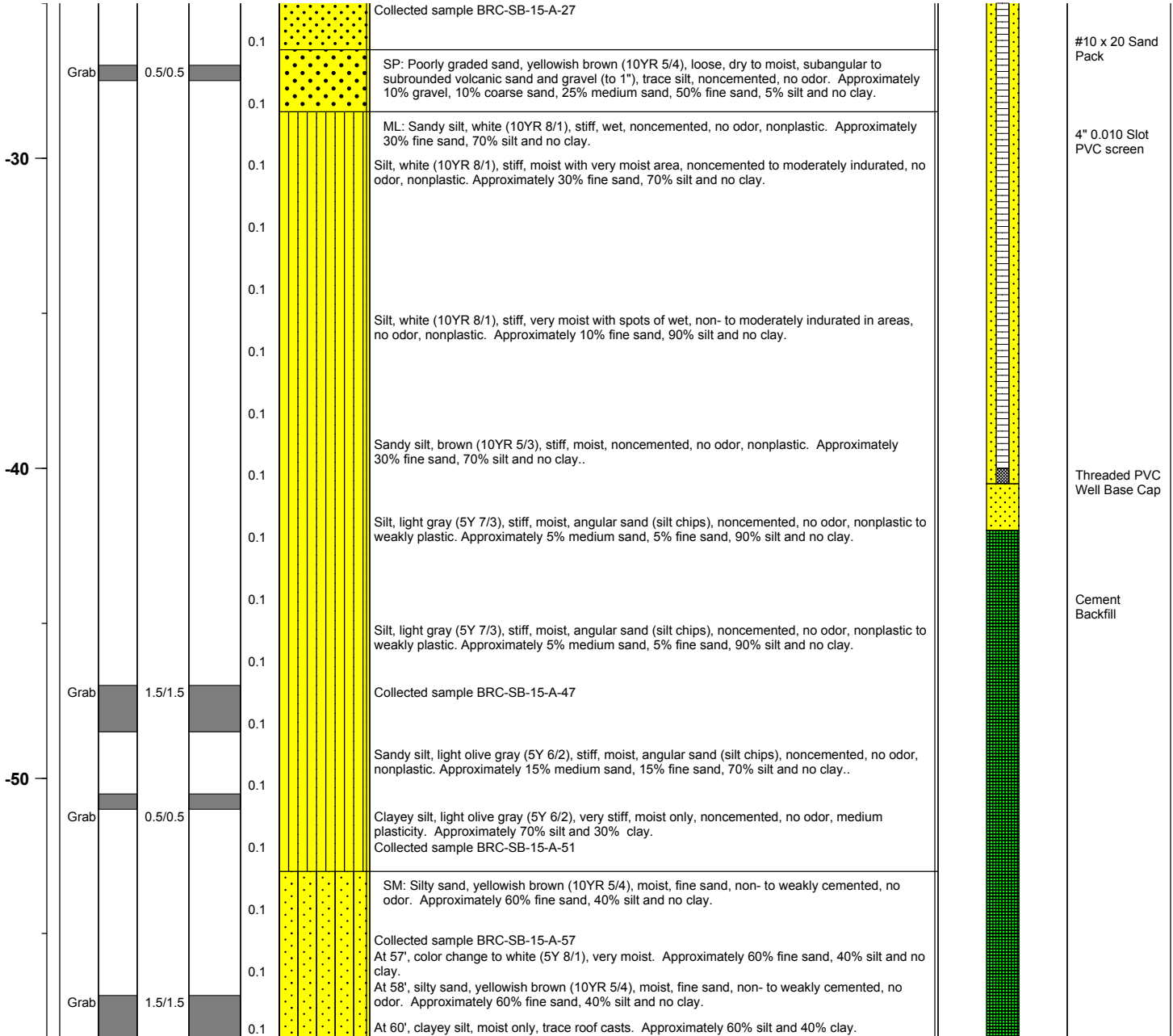


BMI Site - Hydrogeologic Characterization
Henderson, Nevada



Log of Boring No. BRC-SB-15-A

Depth Elevation (MSLD)	Sample Type	Sample Interval	Sample Recovery (feet)	Sample Retained for Analysis	PID	Lithology	Soil Description	Well Construction
---------------------------	-------------	-----------------	---------------------------	---------------------------------	-----	-----------	------------------	-------------------



BMI Site - Hydrogeologic Characterization
Henderson, Nevada



Log of Boring No. BRC-SB-15-A

Depth Elevation (MSLD)	Sample Type	Sample Interval	Sample Recovery (feet)	Sample Retained for Analysis	PID	Lithology	Soil Description	Well Construction
------------------------	-------------	-----------------	------------------------	------------------------------	-----	-----------	------------------	-------------------

