

SHEET NUMBER: 1

PLATE NUMBER: 1

**POTENTIOMETRIC SURFACE:
TRONOX SITE TO LAS VEGAS WASH
FOURTH QUARTER 2006**

Semi-Annual Performance Report
Tronox Facility
Henderson, Nevada

SCALE: 1" = 500'
DATE: January, 2007
PROJECT NUMBER: 04020-023-110

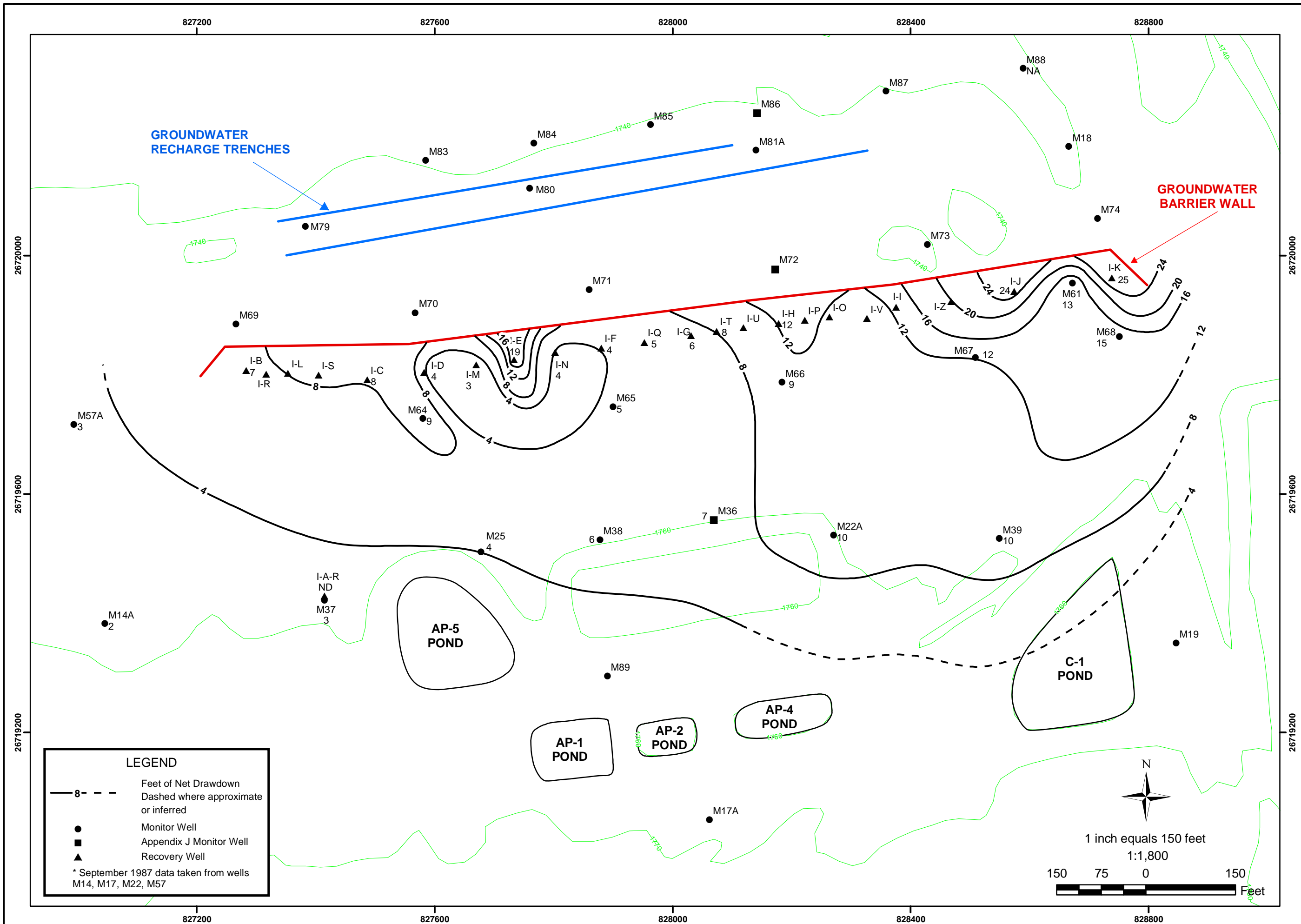
ENSR CORPORATION

1220 AVENIDA ACASO
CAMARILLO, CALIFORNIA 93012
PHONE: (805) 388-3775
FAX: (805) 388-3577
WEB: HTTP://WWW.ENSR.AECOM.COM

DESIGNED BY:	REVISIONS		
E. Kirsh	NO.:	DESCRIPTION:	DATE:
DRAWN BY:			
M. Scop			
CHECKED BY:			
E. Kirsh			
APPROVED BY:			
D. Geny			



J:\Tronox\GIS\mxd\contour3_jay-de-06\Plate_1_Potentiometric.mxd



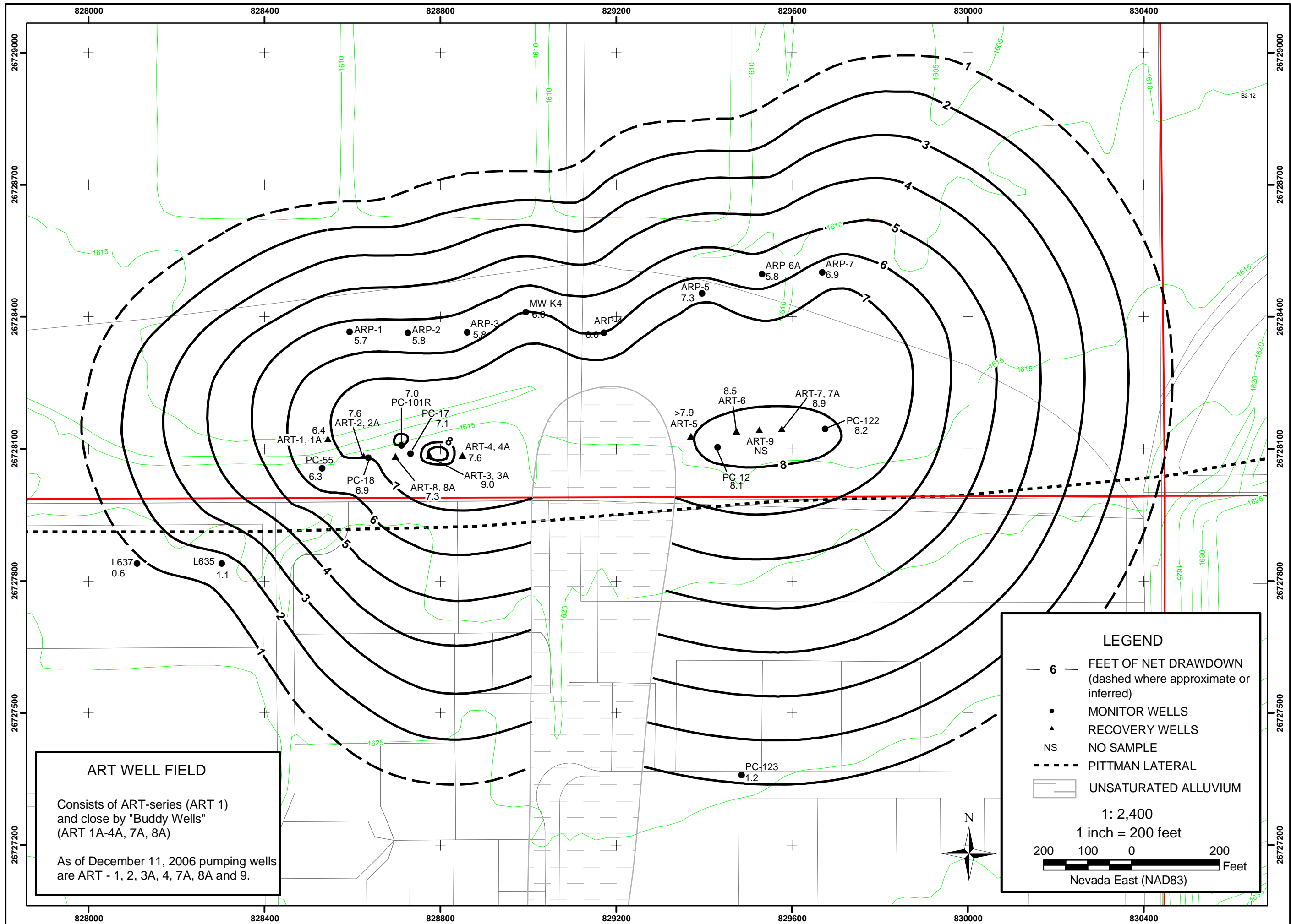
DESIGNED BY:		REVISIONS:	
E. Krish	NO.	DESCRIPTION:	DATE:
BY:	BY:		

ENSR CORPORATION
 1220 AVENIDA ACASO
 CAMARILLO, CALIFORNIA 93012
 PHONE: (805) 388-3775
 FAX: (805) 388-3577
 WEB: HTTP://WWW.ENSR.AECOM.COM

ENSR AECOM

NET DRAWDOWN AT THE INTERCEPTOR WELL FIELD	
SEPTEMBER 1987 TO NOVEMBER 2006	
Semi-Annual Performance Report	
Tronox Facility	
Henderson, Nevada	
SCALE:	PROJECT NUMBER:
1" = 150'	04020-023-110
DATE:	
January 2007	

PLATE NUMBER:
2
SHEET NUMBER:
1



ART WELL FIELD

Consists of ART-series (ART 1) and close by "Buddy Wells" (ART 1A-4A, 7A, 8A)

As of December 11, 2006 pumping wells are ART - 1, 2, 3A, 4, 7A, 8A and 9.

LEGEND

- 6 FEET OF NET DRAWDOWN (dashed where approximate or inferred)
- MONITOR WELLS
- RECOVERY WELLS
- NS NO SAMPLE
- PITTMAN LATERAL
- UNSATURATED ALLUVIUM

1: 2,400
1 inch = 200 feet

200 100 0 200 Feet

Nevada East (NAD83)

DESIGNED BY:		REVISIONS:	
E. Krish	NO:	DESCRIPTION:	DATE:
DRAWN BY:		APPROVED BY:	
M. Scop	E. Krish		D. Gerly
CHECKED BY:			
M. Scop			

ENSR AECOM

ENSR CORPORATION
1220 AVENIDA ACASO
CAMARILLO, CALIFORNIA 93012
PHONE: (805) 388-3775
FAX: (805) 388-3577
WEB: HTTP://WWW.ENSR-AECOM.COM

NET DRAWDOWN ATHENS ROAD WELL FIELD
APRIL 2002 TO NOVEMBER 2006

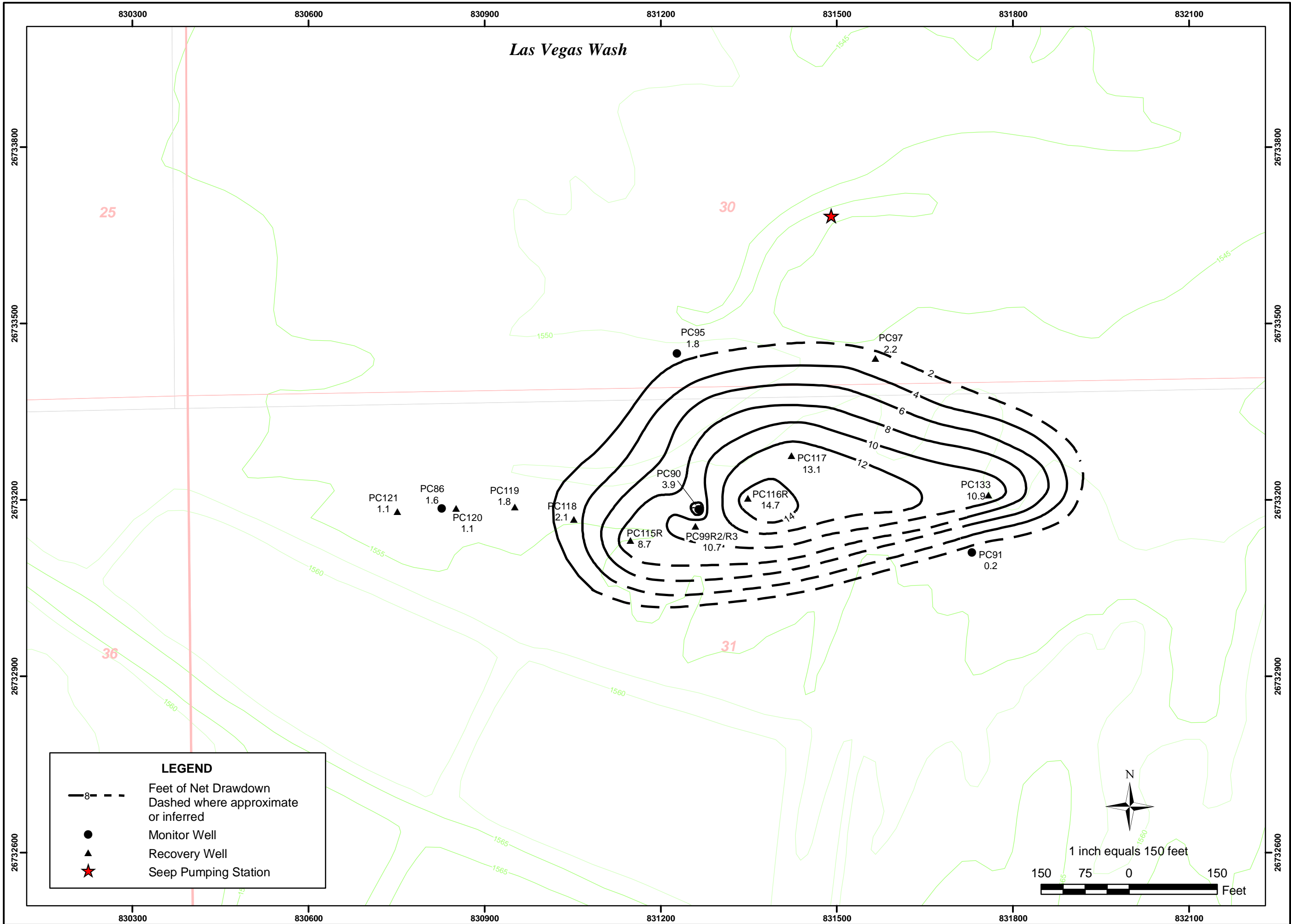
Semi-Annual Performance Report
Tronox Facility
Henderson, Nevada

SCALE: 1" = 200'
DATE: January 2007
PROJECT NUMBER: 04020-023-110

PLATE NUMBER:
3

SHEET NUMBER:
1

Las Vegas Wash



LEGEND

- Feet of Net Drawdown
Dashed where approximate or inferred
- Monitor Well
- Recovery Well
- Seep Pumping Station

N

1 inch equals 150 feet

150 75 0 150 Feet

DESIGNED BY:		REVISIONS:	
E. Krish	NO:	DESCRIPTION:	DATE:
M. Scop	NO:	DESCRIPTION:	DATE:
E. Krish	NO:	DESCRIPTION:	DATE:
D. Gerly	NO:	DESCRIPTION:	DATE:

ENSR AECOM

ENSR CORPORATION
 1220 AVENIDA ACASO
 CAMARILLO, CALIFORNIA 93012
 PHONE: (805) 388-3775
 FAX: (805) 388-3577
 WEB: HTTP://WWW.ENSR-AECOM.COM

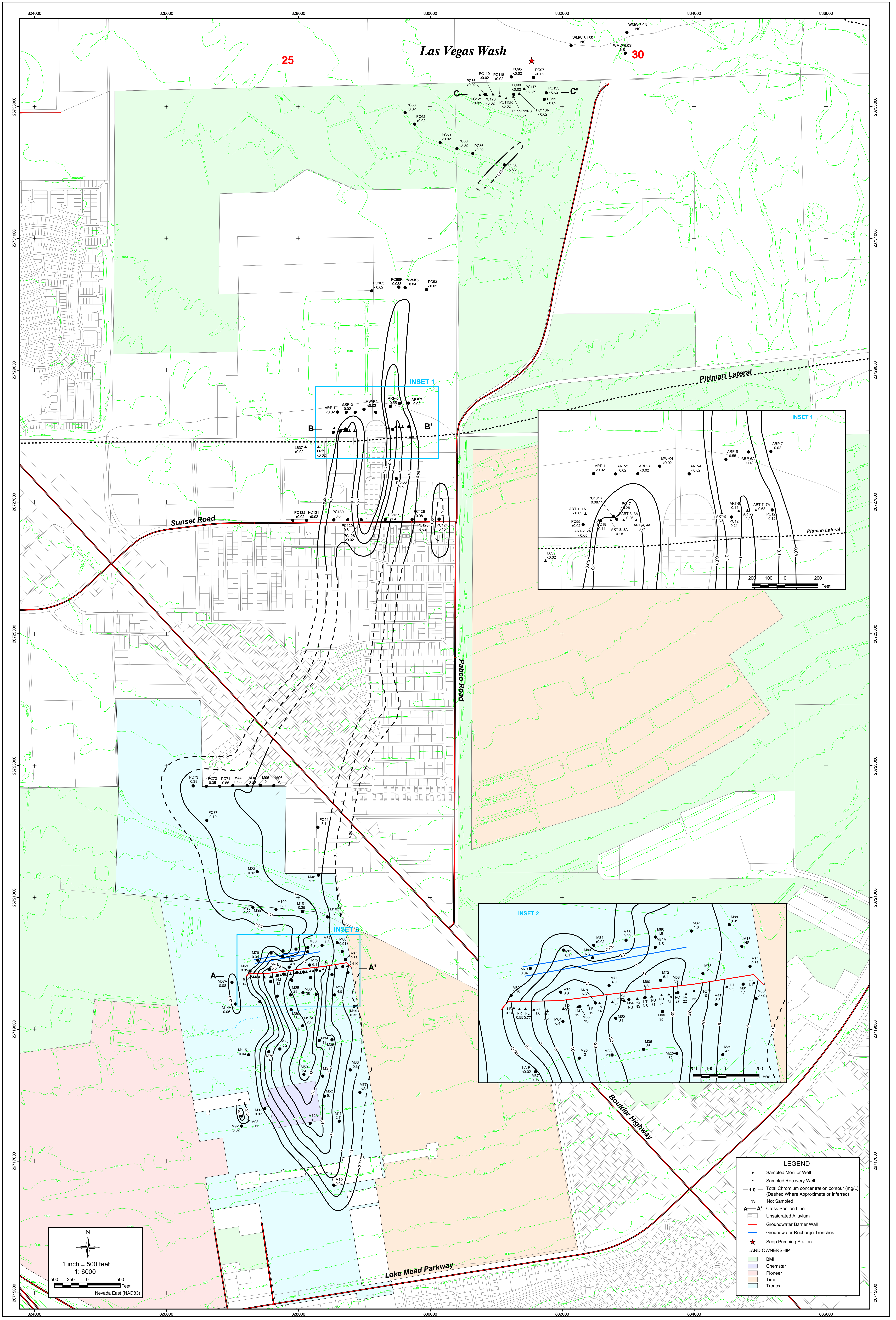
**NET DRAWDOWN
SEEP WELL FIELD**

MAY 2001 TO NOVEMBER 2006
 Semi-Annual Performance Report
 Tronox Facility
 Henderson, Nevada

SCALE: 1" = 150'
 DATE: 1/24/07
 PROJECT NUMBER: 04020-023-110

PLATE NUMBER:
4

SHEET NUMBER:
1



SHEET NUMBER: 1
 PLATE NUMBER: 5

**TOTAL CHROMIUM IN GROUNDWATER:
 TRONOX SITE TO LAS VEGAS WASH
 FOURTH QUARTER 2006**

Semi-Annual Performance Report
 Tronox Facility
 Henderson, Nevada

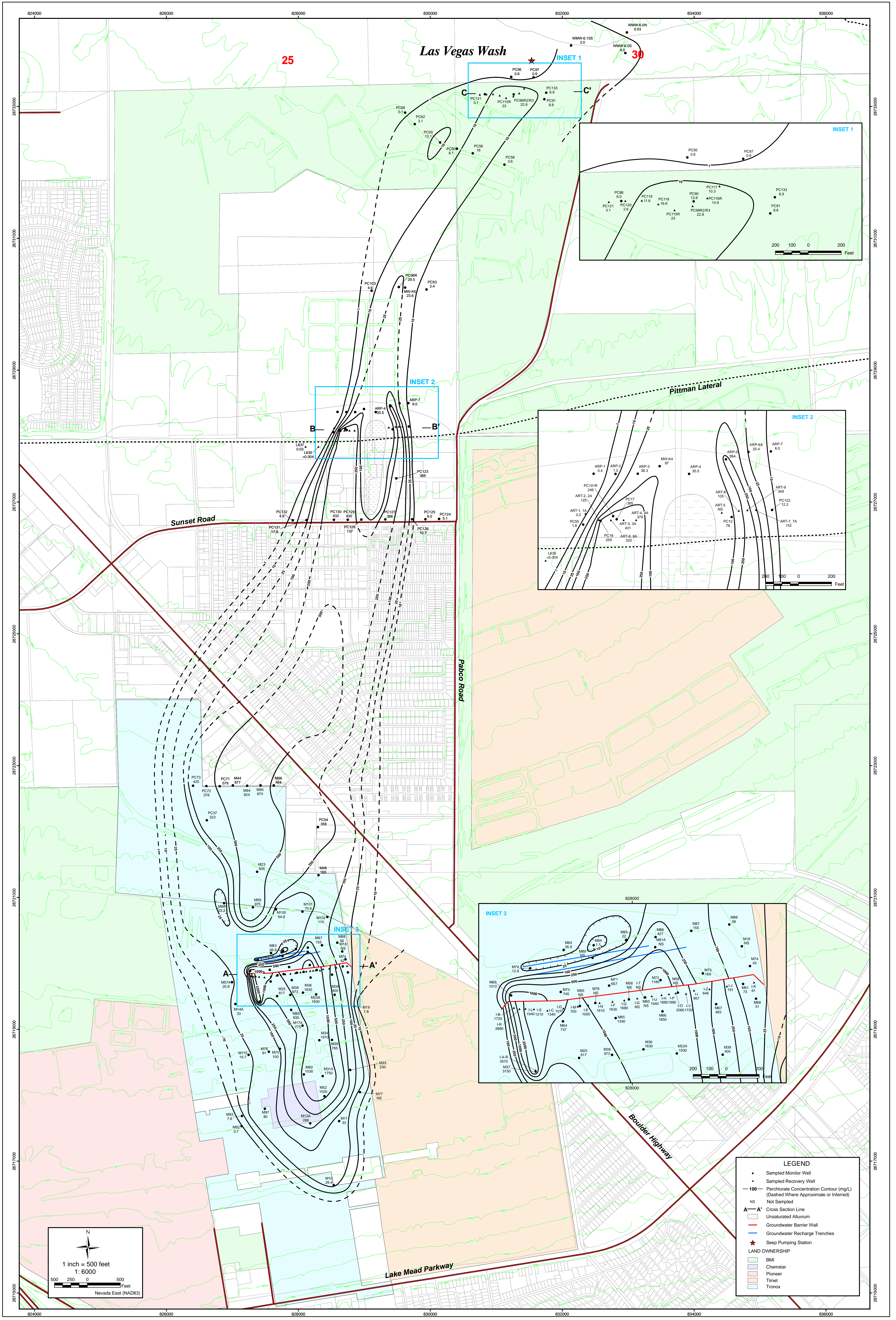
SCALE: 1" = 500'
 DATE: January, 2007
 PROJECT NUMBER: 04020-023-110

ENSR CORPORATION

1220 AVENIDA ACASO
 CAMARILLO, CALIFORNIA 93012
 PHONE: (805) 388-3775
 FAX: (805) 388-3577
 WEB: HTTP://WWW.ENSR.AECOM.COM

DESIGNED BY:	REVISIONS		
T. Reed	NO.:	DESCRIPTION:	DATE:
DRAWN BY:			
M. Scop			
CHECKED BY:			
T. Reed			
APPROVED BY:			
D. Gery			

TRONOX



SHEET NUMBER: 1
 PLATE NUMBER: 6

**PERCHLORATE IN GROUNDWATER:
 TRONOX SITE TO LAS VEGAS WASH
 FOURTH QUARTER 2006**

Semi-Annual Performance Report
 Tronox Facility
 Henderson, Nevada

SCALE: 1" = 500'
 DATE: January, 2007
 PROJECT NUMBER: 04020-023-110

ENSR CORPORATION

1220 AVENIDA ACASO
 CAMARILLO, CALIFORNIA 93012
 PHONE: (805) 388-3775
 FAX: (805) 388-3577
 WEB: HTTP://WWW.ENSR.AECOM.COM

DESIGNED BY:	REVISIONS			
E. Krish	NO.:	DESCRIPTION:	DATE:	BY:
DRAWN BY:				
M. Scop				
CHECKED BY:				
E. Krish				
APPROVED BY:				
D. Geny				

