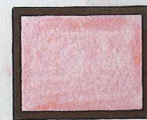


# HENDERSON, NEVADA

## KM CHEMICAL, LLC

### ASSESSOR PARCEL MAP

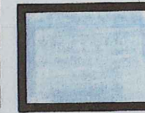
# 03-28-02



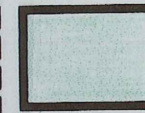
KMC LLC - Owned Properties  
South of Warm Springs Road



KMC LLC - Owned Properties  
North of Warm Springs Road

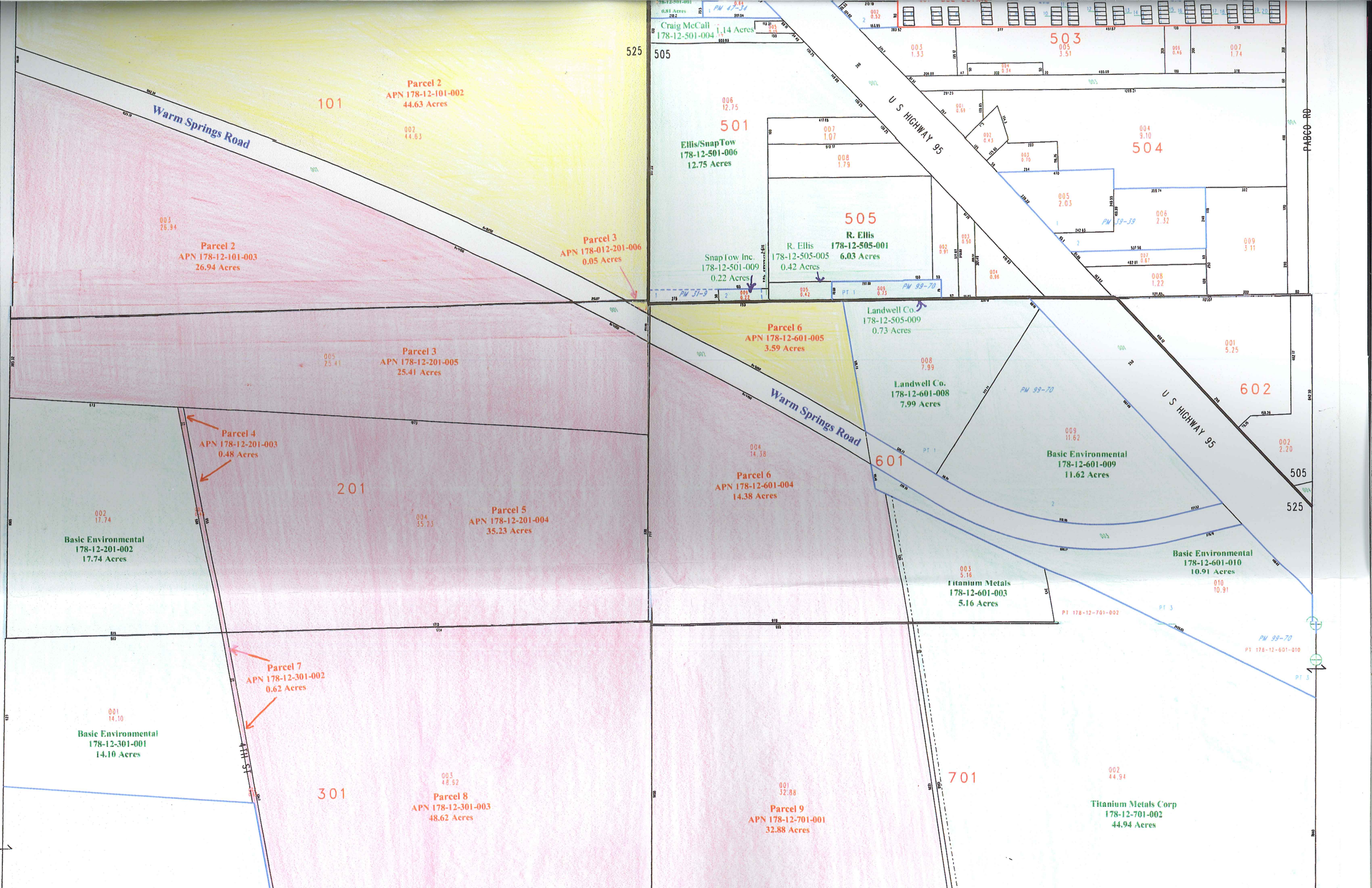


Government-Owned Properties



Other Neighboring Properties





**Parcel 2**  
APN 178-12-101-002  
44.63 Acres

**Parcel 2**  
APN 178-12-101-003  
26.94 Acres

**Parcel 3**  
APN 178-012-201-006  
0.05 Acres

**Parcel 3**  
APN 178-12-201-005  
25.41 Acres

**Parcel 4**  
APN 178-12-201-003  
0.48 Acres

**Parcel 5**  
APN 178-12-201-004  
35.23 Acres

**Parcel 6**  
APN 178-12-601-005  
3.59 Acres

**Parcel 6**  
APN 178-12-601-004  
14.38 Acres

**Parcel 7**  
APN 178-12-301-002  
0.62 Acres

**Parcel 8**  
APN 178-12-301-003  
48.62 Acres

**Parcel 9**  
APN 178-12-701-001  
32.88 Acres

**Parcel 501**  
Ellis/Snap Tow  
178-12-501-006  
12.75 Acres

**Parcel 503**  
0.05 Acres  
3.51 Acres

**Parcel 504**  
0.04 Acres  
9.10 Acres

**Parcel 505**  
R. Ellis  
178-12-505-001  
6.03 Acres

**Parcel 505**  
R. Ellis  
178-12-505-005  
0.42 Acres

**Parcel 505**  
Snap Tow Inc.  
178-12-501-009  
0.22 Acres

**Parcel 601**  
Landwell Co.  
178-12-505-009  
0.73 Acres

**Parcel 601**  
Landwell Co.  
178-12-601-008  
7.99 Acres

**Parcel 602**  
0.01 Acres  
5.25 Acres

**Parcel 601**  
Basic Environmental  
178-12-601-009  
11.62 Acres

**Parcel 601**  
Titanium Metals  
178-12-601-003  
5.16 Acres

**Parcel 601**  
Basic Environmental  
178-12-601-010  
10.91 Acres

**Parcel 701**  
Titanium Metals Corp  
178-12-701-002  
44.94 Acres

Warm Springs Road

U.S. HIGHWAY 95

PABCO RD

4TH ST

101

201

301

525

505

501

505

504

601

602

701

505

525

PM 100-24

PT 4  
PT 178-13-101-005

PM 100-24

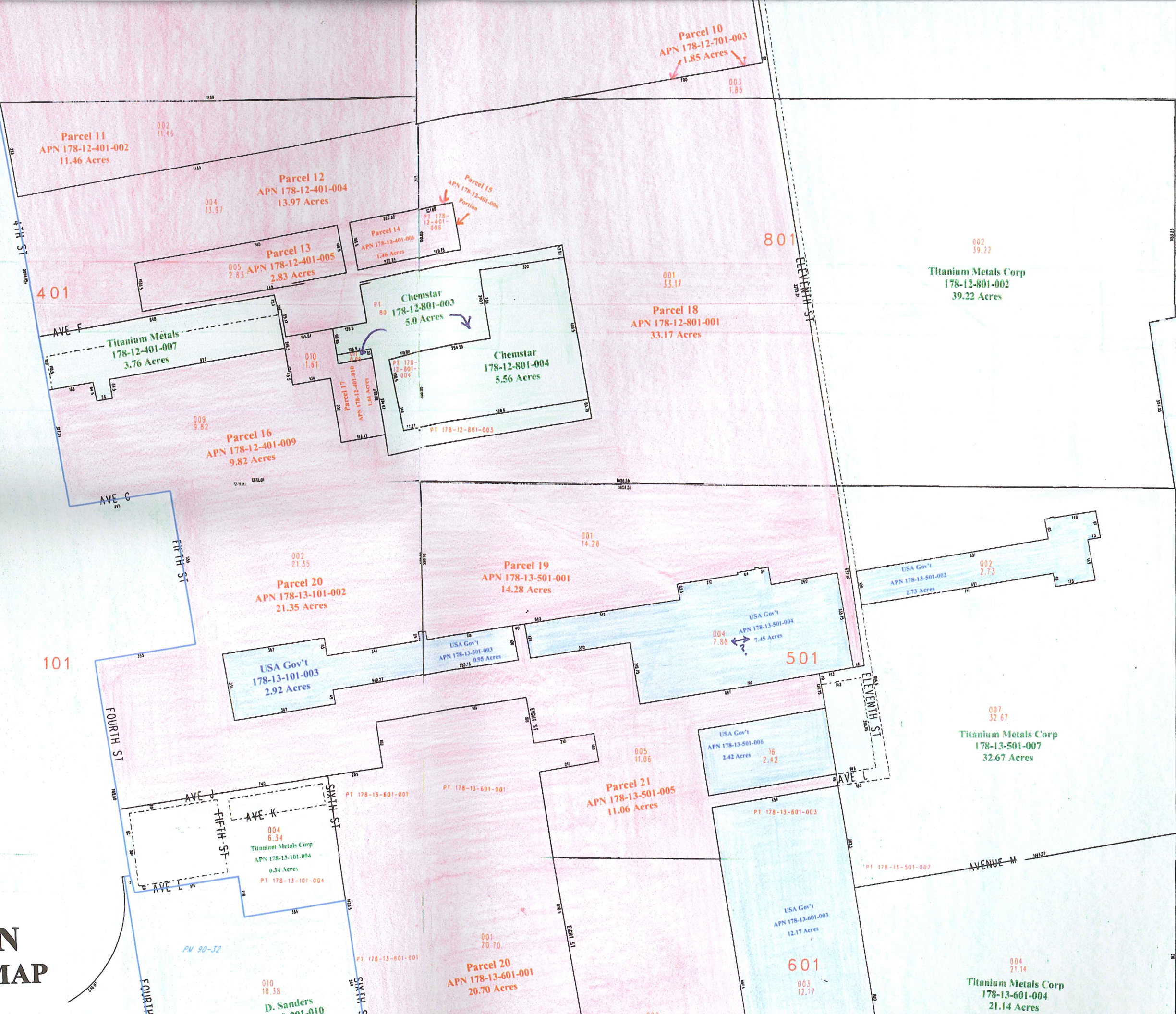
PT 178-13-101-005

PM 100-24

Pioneer Chlor  
178-13-101-005  
299.41 Acres

005  
299.41

# NV HENDERSON ASSESSOR PARCEL MAP 03-28-02



PM 90-32

D. Sanders  
178-13-101-010

