

Polygon Interpolation Areas (Soil <10 ft bgs)

- Polygon area based on single sample location above Criteria 1*
- 1 Long Amphibole Fiber with no other risk drivers
- Polygon area based on single sample location above Criteria 2*

*See Figure 4-1 for definitions of Criteria 1 and Criteria 2

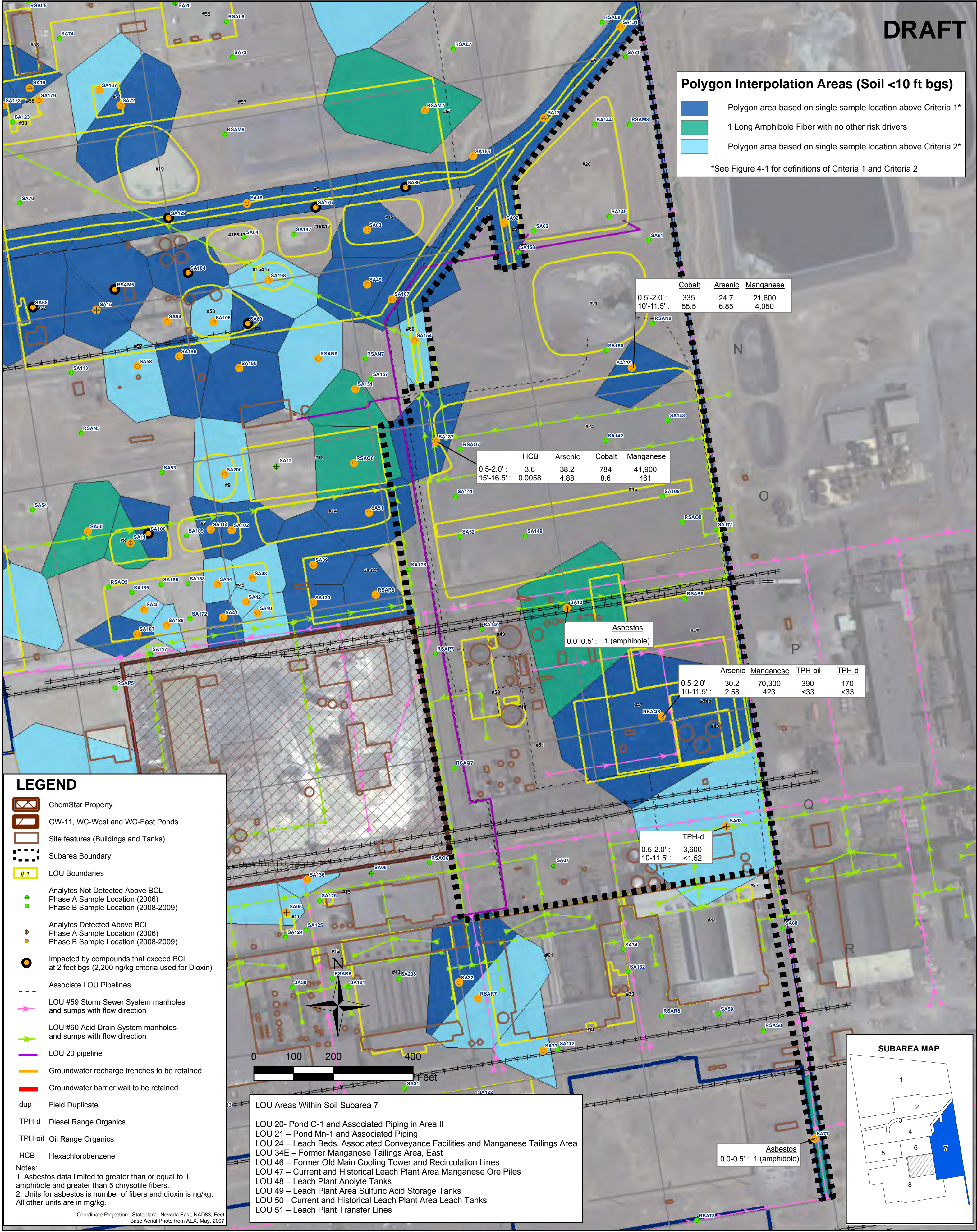
	Cobalt	Arsenic	Manganese
0.5'-2.0' :	335	24.7	21,600
10'-11.5' :	55.5	6.85	4,050

	HCB	Arsenic	Cobalt	Manganese
0.5'-2.0' :	3.6	38.2	784	41,900
15'-16.5' :	0.0058	4.88	8.6	461

Asbestos
0.0'-0.5' : 1 (amphibole)

	Arsenic	Manganese	TPH-oil	TPH-d
0.5'-2.0' :	30.2	70,300	390	170
10'-11.5' :	2.58	423	<33	<33

	TPH-d
0.5'-2.0' :	3,600
10'-11.5' :	<1.52

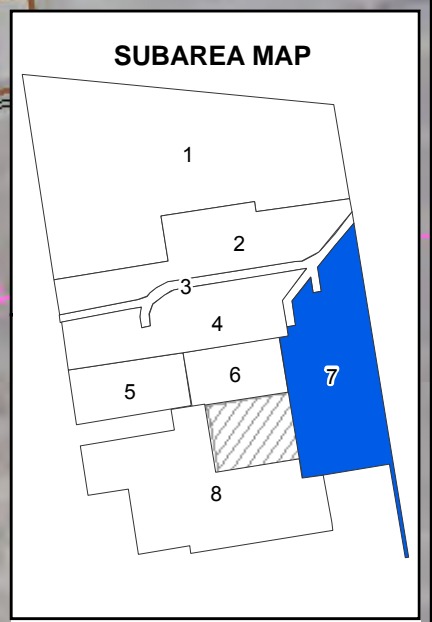


LEGEND

- ChemStar Property
- GW-11, WC-West and WC-East Ponds
- Site features (Buildings and Tanks)
- Subarea Boundary
- LOU Boundaries
- Analytes Not Detected Above BCL Phase A Sample Location (2006)
- Analytes Not Detected Above BCL Phase B Sample Location (2008-2009)
- Analytes Detected Above BCL Phase A Sample Location (2006)
- Analytes Detected Above BCL Phase B Sample Location (2008-2009)
- Impacted by compounds that exceed BCL at 2 feet bgs (2,200 ng/kg criteria used for Dioxin)
- Associate LOU Pipelines
- LOU #59 Storm Sewer System manholes and sumps with flow direction
- LOU #60 Acid Drain System manholes and sumps with flow direction
- LOU 20 pipeline
- Groundwater recharge trenches to be retained
- Groundwater barrier wall to be retained
- dup Field Duplicate
- TPH-d Diesel Range Organics
- TPH-oil Oil Range Organics
- HCB Hexachlorobenzene

LOU Areas Within Soil Subarea 7

- LOU 20 - Pond C-1 and Associated Piping in Area II
- LOU 21 - Pond Mn-1 and Associated Piping
- LOU 24 - Leach Beds, Associated Conveyance Facilities and Manganese Tailings Area
- LOU 34E - Former Manganese Tailings Area, East
- LOU 46 - Former Old Main Cooling Tower and Recirculation Lines
- LOU 47 - Current and Historical Leach Plant Area Manganese Ore Piles
- LOU 48 - Leach Plant Analyte Tanks
- LOU 49 - Leach Plant Area Sulfuric Acid Storage Tanks
- LOU 50 - Current and Historical Leach Plant Area Leach Tanks
- LOU 51 - Leach Plant Transfer Lines



SOIL SUBAREA 7
CURRENT LEACH PLANT PRODUCTION AREA
Tronox Facility
Henderson, Nevada

SCALE:	DATE:	PROJECT NUMBER:
1" = 300'	01/29/10	2027.01

DESIGNED BY:	NO.:	REVISIONS DESCRIPTION:	DATE:	BY:
DRAWN BY:				
CHECKED BY:				
APPROVED BY:				

northgate
environmental management, inc.
TRONOX
<http://www.ngem.com>

SHEET NUMBER: 1

PLATE NUMBER: 4-8