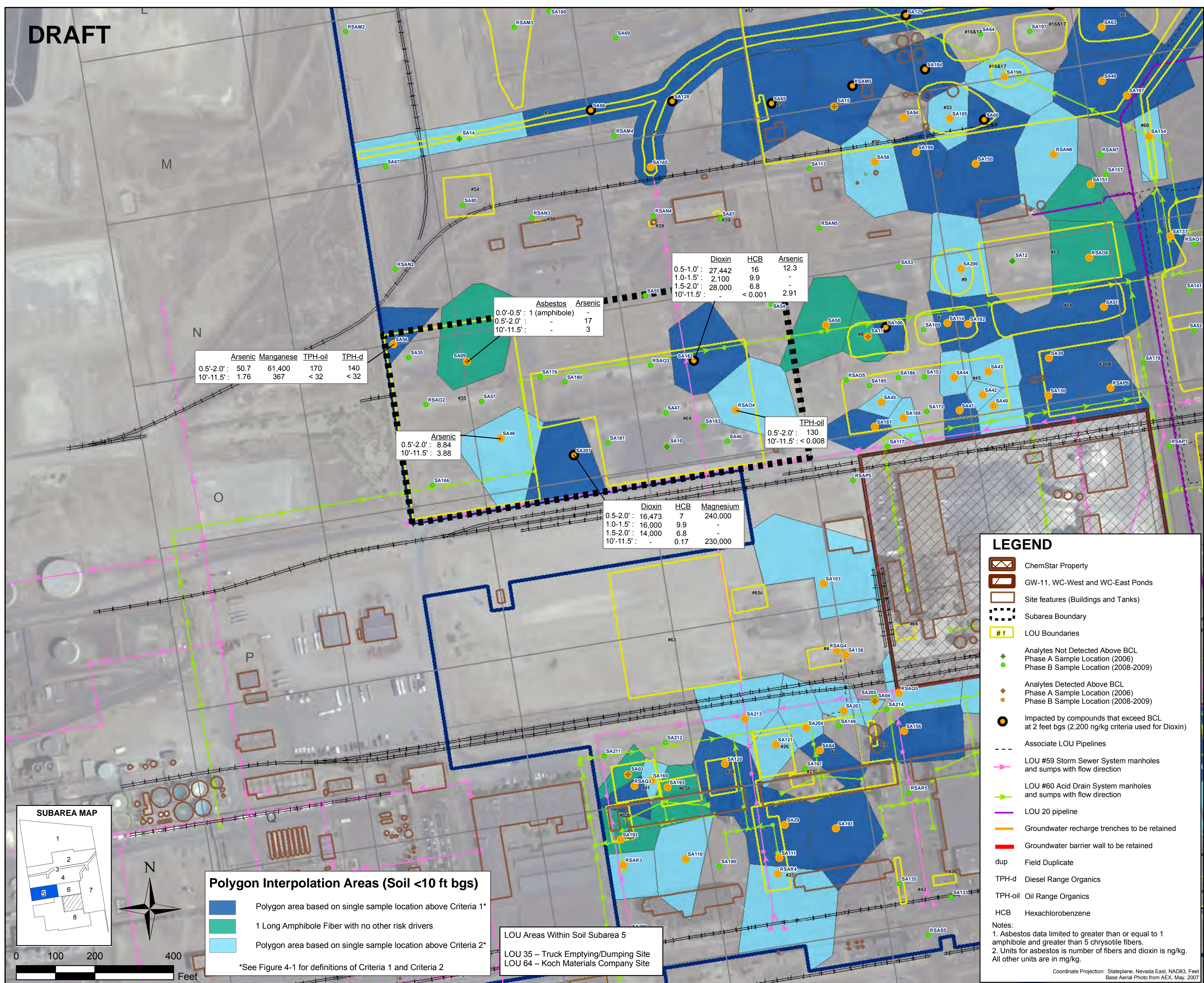


DRAFT



	Arsenic	Manganese	TPH-oil	TPH-d
0.5'-2.0' :	50.7	61,400	170	140
10'-11.5' :	1.76	367	< 32	< 32

	Asbestos	Arsenic
0.0'-0.5' :	1 (amphibole)	-
0.5'-2.0' :	-	17
10'-11.5' :	-	3

	Arsenic
0.5'-2.0' :	8.84
10'-11.5' :	3.88

	Dioxin	HCB	Arsenic
0.5'-1.0' :	27,442	16	12.3
1.0'-1.5' :	2,100	9.9	-
1.5'-2.0' :	28,000	6.8	-
10'-11.5' :	-	< 0.001	2.91

	Dioxin	HCB	Magnesium
0.5'-2.0' :	16,473	7	240,000
1.0'-1.5' :	16,000	9.9	-
1.5'-2.0' :	14,000	6.8	-
10'-11.5' :	-	0.17	230,000

	TPH-oil
0.5'-2.0' :	130
10'-11.5' :	< 0.008

LOU Areas Within Soil Subarea 5
 LOU 35 – Truck Emptying/Dumping Site
 LOU 64 – Koch Materials Company Site

Polygon Interpolation Areas (Soil <10 ft bgs)

- Polygon area based on single sample location above Criteria 1*
- 1 Long Amphibole Fiber with no other risk drivers
- Polygon area based on single sample location above Criteria 2*

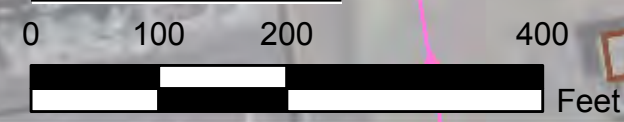
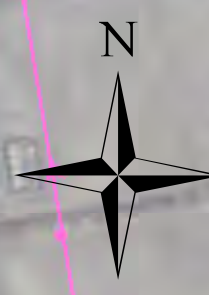
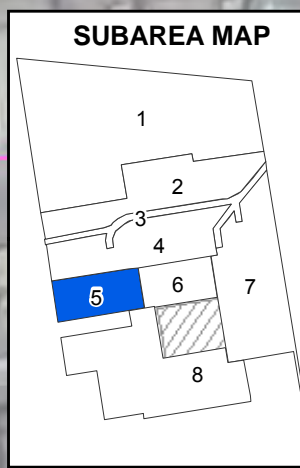
*See Figure 4-1 for definitions of Criteria 1 and Criteria 2

LEGEND

- ChemStar Property
- GW-11, WC-West and WC-East Ponds
- Site features (Buildings and Tanks)
- Subarea Boundary
- LOU Boundaries
- Analytes Not Detected Above BCL
Phase A Sample Location (2006)
Phase B Sample Location (2008-2009)
- Analytes Detected Above BCL
Phase A Sample Location (2006)
Phase B Sample Location (2008-2009)
- Impacted by compounds that exceed BCL at 2 feet bgs (2,200 ng/kg criteria used for Dioxin)
- Associate LOU Pipelines
- LOU #59 Storm Sewer System manholes and sumps with flow direction
- LOU #60 Acid Drain System manholes and sumps with flow direction
- LOU 20 pipeline
- Groundwater recharge trenches to be retained
- Groundwater barrier wall to be retained
- dup Field Duplicate
- TPH-d Diesel Range Organics
- TPH-oil Oil Range Organics
- HCB Hexachlorobenzene

Notes:
 1. Asbestos data limited to greater than or equal to 1 amphibole and greater than 5 chrysotile fibers.
 2. Units for asbestos is number of fibers and dioxin is ng/kg. All other units are in mg/kg.

Coordinate Projection: Stateplane, Nevada East, NAD83, Feet
 Base Aerial Photo from AEX, May, 2007



DESIGNED BY:	NO:	REVISIONS:	DATE:	BY:
NGEM		DESCRIPTION:		
DRAWN BY:				
NGEM				
CHECKED BY:				
NGEM				
APPROVED BY:				
NGEM				

SOIL SUBAREA 5 KOCH MATERIALS AREA	
Tronox Facility Henderson, Nevada	
SCALE:	AS SHOWN
DATE:	01/29/10
PROJECT NUMBER:	2027.01

FIGURE NUMBER:	4-6
SHEET NUMBER:	1

W:\gcs\1\NG-GIS\01_Projects\2027_Tronox\Phase_B\Remediation\Soil_SubArea5_LOU35-64_C-site.mxd Last updated: 1/29/2010 5:45:30 AM