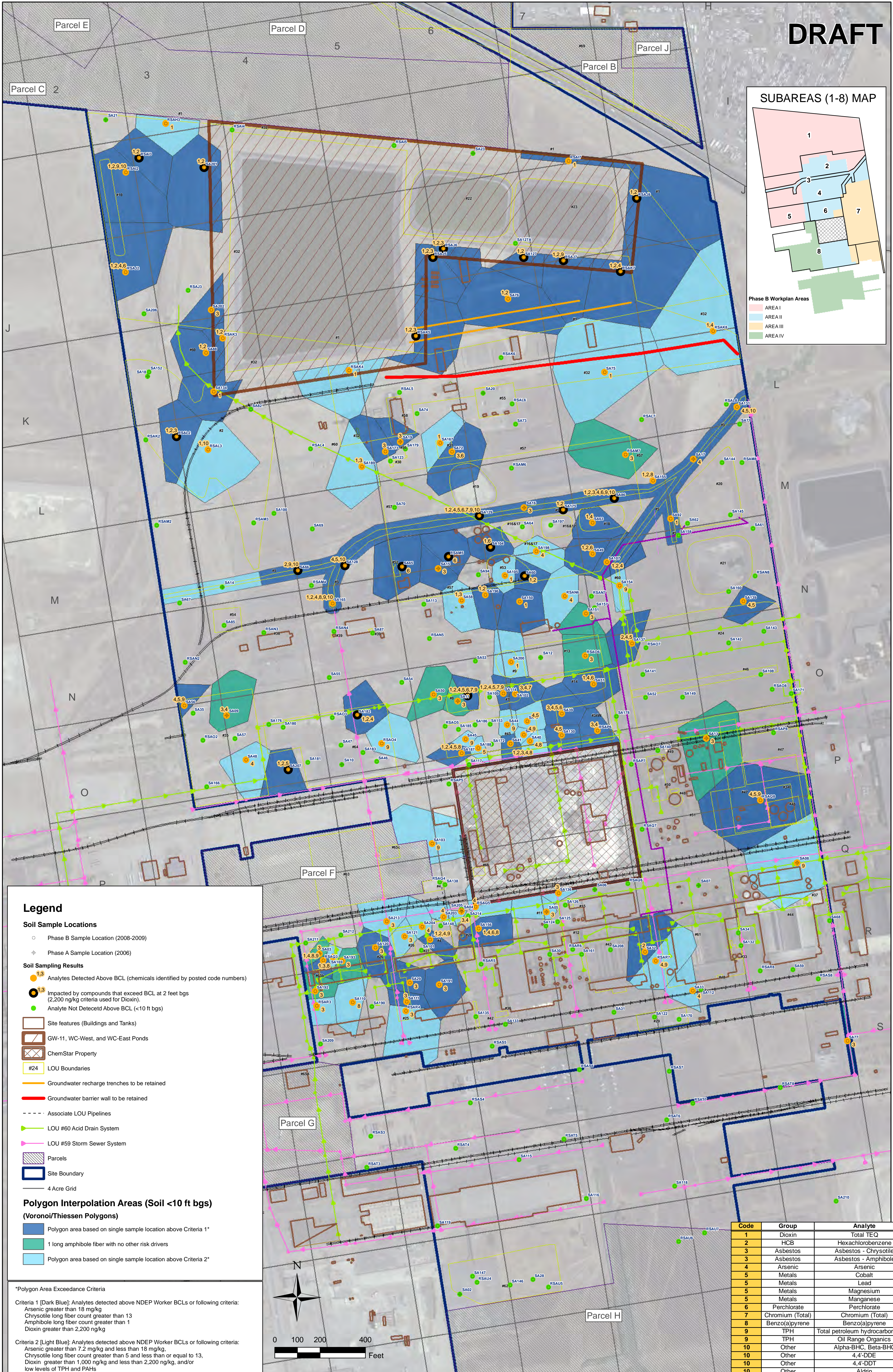
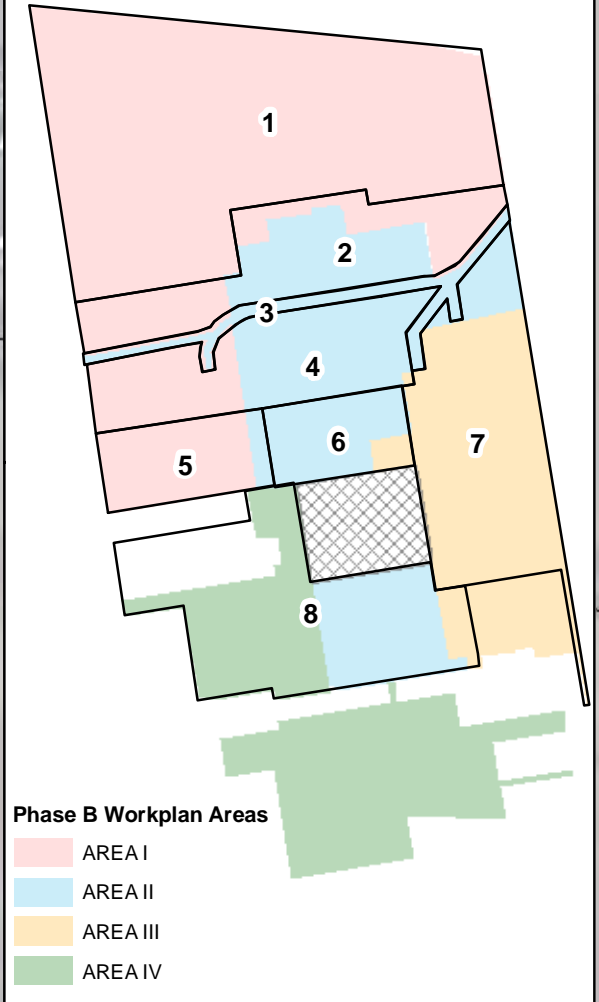


DRAFT

SUBAREAS (1-8) MAP



Legend

- Soil Sample Locations**
- Phase B Sample Location (2008-2009)
 - ⊕ Phase A Sample Location (2006)
- Soil Sampling Results**
- Analytes Detected Above BCL (chemicals identified by posted code numbers)
 - Impacted by compounds that exceed BCL at 2 feet bgs (2,200 ng/kg criteria used for Dioxin)
 - Analyte Not Detected Above BCL (<10 ft bgs)
- Site Features**
- ▭ Site features (Buildings and Tanks)
 - ▭ GW-11, WC-West, and WC-East Ponds
 - ▭ ChemStar Property
 - ▭ #24 LOU Boundaries
 - ▭ Groundwater recharge trenches to be retained
 - ▭ Groundwater barrier wall to be retained
 - ▭ Associate LOU Pipelines
 - ▭ LOU #60 Acid Drain System
 - ▭ LOU #59 Storm Sewer System
- Polygon Interpolation Areas (Soil <10 ft bgs) (Voronoi/Thiessen Polygons)**
- Polygon area based on single sample location above Criteria 1*
 - 1 long amphibole fiber with no other risk drivers
 - Polygon area based on single sample location above Criteria 2*

*Polygon Area Exceedance Criteria

Criteria 1 [Dark Blue]: Analytes detected above NDEP Worker BCLs or following criteria:
 Arsenic greater than 18 mg/kg
 Chrysotile long fiber count greater than 13
 Amphibole long fiber count greater than 1
 Dioxin greater than 2,200 ng/kg

Criteria 2 [Light Blue]: Analytes detected above NDEP Worker BCLs or following criteria:
 Arsenic greater than 7.2 mg/kg and less than 18 mg/kg,
 Chrysotile long fiber count greater than 5 and less than or equal to 13,
 Dioxin greater than 1,000 ng/kg and less than 2,200 ng/kg, and/or
 low levels of TPH and PAHs



Code	Group	Analyte
1	Dioxin	Total TEQ
2	HCB	Hexachlorobenzene
3	Asbestos	Asbestos - Chrysotile
3	Asbestos	Asbestos - Amphibole
4	Arsenic	Arsenic
5	Metals	Cobalt
5	Metals	Lead
5	Metals	Magnesium
5	Metals	Manganese
6	Perchlorate	Perchlorate
7	Chromium (Total)	Chromium (Total)
8	Benzo(a)pyrene	Benzo(a)pyrene
9	TPH	Total petroleum hydrocarbon-diesel
9	TPH	Oil Range Organics
10	Other	Alpha-BHC, Beta-BHC
10	Other	4,4'-DDE
10	Other	4,4'-DDT
10	Other	Aldrin
10	Other	Aroclor-1260
10	Other	Benzene

EXCEEDANCE POLYGONS FOR SHALLOW SOILS (<10 FT BGS) DIRECT CONTACT EXPOSURE

Tronox Facility
Henderson, Nevada

SCALE: 1" = 200'	DATE: 01/29/2010	PROJECT NUMBER: 2027.01
---------------------	---------------------	----------------------------

DESIGNED BY:	NO.:	REVISIONS	DESCRIPTION:	DATE:	BY:
DRAWN BY:					
CHECKED BY:					
APPROVED BY:					

FIGURE NUMBER:
4-1
SHEET NUMBER:
1